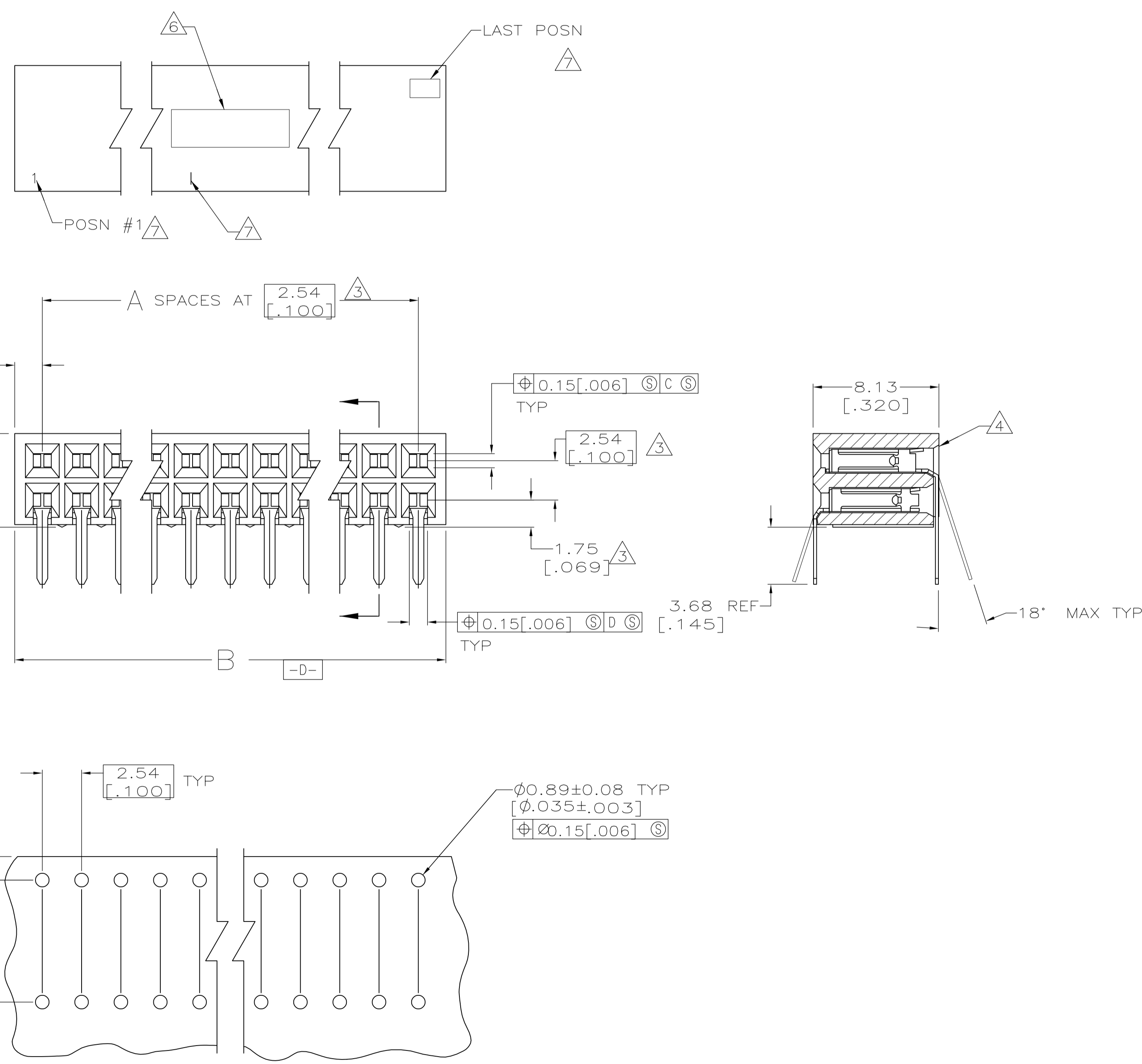


1. QUALITY CONFORMANCE INSPECTION PER MIL-C-55302 (GROUP A, B & C).
2. PACKAGED PER MIL-C-55302
3. THESE DIMENSIONS PERTAIN TO CAVITY CENTERLINES ONLY, NOT TO CONTACT LOCATIONS.
4. SLOT OPTIONAL AT INDICATED AREA OF HOUSING.
5. CONTACTS: GOLD FLASH OVER 0.000762 TO 0.00381 [.000030 TO .000150] NICKEL ENTIRE CONTACT, 0.00127[.000050] GOLD ON CONTACT AREA ONLY.
6. MARKED IN APPROX AREA SHOWN
 EXAMPLE: AMP, AMP PART NUMBER
 DATE CODE MILITARY PART NUMBER
 HOUSINGS SMALLER THAN 20 POSITION ARE MARKED AS FOLLOWS:
 10 THRU 18 POSN - AMP, DATE CODE AND MILITARY PART NUMBER
 8, 6 AND 4 POSN - AMP TRADEMARK ONLY (MAY BE ROTATED 90° TO FIT).
7. CHARACTERS MARKED IN AREA SHOWN, EVERY FIFTH POSITION MARKED WITH A BAR
8. "CSA" LOGO MARKED ON HOUSING.
9. OBSOLETE



| | | | | | | | | | | | |
|----------------------|-------------------|----|------------|-------------|----------------------|-----------------|------------------|------------|-------------|---|-----------|
| M55302/128-DR1C | 166.12 [6.540] | 64 | 130 | 9 | 6-87964-4 | M55302/128-BR1C | 84.84 [3.340] | 32 | 66 | 9 | 3-87964-2 |
| M55302/128-DQ1C | 163.58 [6.440] | 63 | 128 | | 6-87964-3 | M55302/128-BQ1C | 82.30 [3.240] | 31 | 64 | 9 | 3-87964-1 |
| M55302/128-DP1C | 161.04 [6.340] | 62 | 126 | 9 | 6-87964-2 | M55302/128-BP1C | 79.76 [3.140] | 30 | 62 | 9 | 3-87964-0 |
| M55302/128-DN1C | 158.50 [6.240] | 61 | 124 | | 6-87964-1 | M55302/128-BN1C | 77.22 [3.040] | 29 | 60 | | 2-87964-9 |
| M55302/128-DM1C | 155.96 [6.140] | 60 | 122 | 9 | 6-87964-0 | M55302/128-BM1C | 74.68 [2.940] | 28 | 58 | 9 | 2-87964-8 |
| M55302/128-DL1C | 153.42 [6.040] | 59 | 120 | 9 | 5-87964-9 | M55302/128-BL1C | 72.14 [2.840] | 27 | 56 | | 2-87964-7 |
| M55302/128-DK1C | 150.88 [5.940] | 58 | 118 | | 5-87964-8 | M55302/128-BK1C | 69.60 [2.740] | 26 | 54 | 9 | 2-87964-6 |
| M55302/128-DJ1C | 148.34 [5.840] | 57 | 116 | | 5-87964-7 | M55302/128-BJ1C | 67.06 [2.640] | 25 | 52 | | 2-87964-5 |
| M55302/128-DH1C | 145.80 [5.740] | 56 | 114 | 9 | 5-87964-6 | M55302/128-BH1C | 64.52 [2.540] | 24 | 50 | | 2-87964-4 |
| M55302/128-DG1C | 143.26 [5.640] | 55 | 112 | 9 | 5-87964-5 | M55302/128-BG1C | 61.98 [2.440] | 23 | 48 | | 2-87964-3 |
| M55302/128-DF1C | 140.72 [5.540] | 54 | 110 | | 5-87964-4 | M55302/128-BF1C | 59.44 [2.340] | 22 | 46 | 9 | 2-87964-2 |
| M55302/128-DE1C | 138.18 [5.440] | 53 | 108 | 9 | 5-87964-3 | M55302/128-BE1C | 56.90 [2.240] | 21 | 44 | | 2-87964-1 |
| M55302/128-DD1C | 135.64 [5.340] | 52 | 106 | | 5-87964-2 | M55302/128-BD1C | 54.36 [2.140] | 20 | 42 | | 2-87964-0 |
| M55302/128-DC1C | 133.10 [5.240] | 51 | 104 | 9 | 5-87964-1 | M55302/128-BC1C | 51.82 [2.040] | 19 | 40 | | 1-87964-9 |
| M55302/128-DB1C | 130.56 [5.140] | 50 | 102 | 9 | 5-87964-0 | M55302/128-BB1C | 49.28 [1.940] | 18 | 38 | 9 | 1-87964-8 |
| M55302/128-DA1C | 128.02 [5.040] | 49 | 100 | | 4-87964-9 | M55302/128-BA1C | 46.74 [1.840] | 17 | 36 | | 1-87964-7 |
| M55302/128-CR1C | 125.48 [4.940] | 48 | 98 | | 4-87964-8 | M55302/128-AR1C | 40.20 [1.740] | 16 | 34 | | 1-87964-6 |
| M55302/128-CQ1C | 122.94 [4.840] | 47 | 96 | 9 | 4-87964-7 | M55302/128-AQ1C | 41.66 [1.640] | 15 | 32 | 9 | 1-87964-5 |
| M55302/128-CP1C | 120.40 [4.740] | 46 | 94 | 9 | 4-87964-6 | M55302/128-AP1C | 39.12 [1.540] | 14 | 30 | | 1-87964-4 |
| M55302/128-CN1C | 117.86 [4.640] | 45 | 92 | 9 | 4-87964-5 | M55302/128-AN1C | 36.58 [1.440] | 13 | 28 | | 1-87964-3 |
| M55302/128-CM1C | 115.32 [4.540] | 44 | 90 | 9 | 4-87964-4 | M55302/128-AM1C | 34.04 [1.340] | 12 | 26 | | 1-87964-2 |
| M55302/128-CL1C | 112.78 [4.440] | 43 | 88 | 9 | 4-87964-3 | M55302/128-AL1C | 31.50 [1.240] | 11 | 24 | 9 | 1-87964-1 |
| M55302/128-CK1C | 110.24 [4.340] | 42 | 86 | 9 | 4-87964-2 | M55302/128-AK1C | 28.96 [1.140] | 10 | 22 | 9 | 1-87964-0 |
| M55302/128-CJ1C | 107.70 [4.240] | 41 | 84 | 9 | 4-87964-1 | M55302/128-AJ1C | 26.42 [1.040] | 9 | 20 | | 87964-9 |
| M55302/128-CH1C | 105.16 [4.140] | 40 | 82 | | 4-87964-0 | M55302/128-AH1C | 23.88 [.940] | 8 | 18 | | 87964-8 |
| M55302/128-CG1C | 102.62 [4.040] | 39 | 80 | | 3-87964-9 | M55302/128-AG1C | 21.34 [.840] | 7 | 16 | | 87964-7 |
| M55302/128-CF1C | 100.08 [3.940] | 38 | 78 | | 3-87964-8 | M55302/128-AF1C | 18.80 [.740] | 6 | 14 | 9 | 87964-6 |
| M55302/128-CE1C | 97.54 [3.840] | 37 | 76 | 9 | 3-87964-7 | M55302/128-AE1C | 16.26 [.640] | 5 | 12 | | 87964-5 |
| M55302/128-CD1C | 95.00 [3.740] | 36 | 74 | | 3-87964-6 | M55302/128-AD1C | 13.72 [.540] | 4 | 10 | | 87964-4 |
| M55302/128-CC1C | 92.46 [3.640] | 35 | 72 | | 3-87964-5 | M55302/128-AC1C | 11.18 [.440] | 3 | 8 | | 87964-3 |
| M55302/128-CB1C | 89.92 [3.540] | 34 | 70 | 9 | 3-87964-4 | M55302/128-AB1C | 8.64 [.340] | 2 | 6 | | 87964-2 |
| M55302/128-CA1C | 87.38 [3.440] | 33 | 68 | | 3-87964-3 | M55302/128-AA1C | 6.10 [.240] | 1 | 4 | 9 | 87964-1 |
| MILITARY PART NUMBER | B | A | NO OF POSN | PART NUMBER | MILITARY PART NUMBER | B | A | NO OF POSN | PART NUMBER | | |

RECOMMENDED PC BOARD HOLE LAYOUT

THIS DRAWING IS A CONTROLLED DOCUMENT. DIN J GALLUCCI BG 4-30-91
CHK R. BENDORF 10-24-91

TOLERANCES UNLESS OTHERWISE SPECIFIED:

| | | |
|--------|---|------------|
| 0. PLC | ± | - |
| 1. PLC | ± | - |
| 2. PLC | ± | 0 |
| 3. PLC | ± | 0.25[.010] |
| 4. PLC | ± | - |
| ANGLES | ± | - |

MATERIAL HOUSING: FINISH 5

APVD: R. BENDORF

PRODUCT SPEC: HOUSING ASSEMBLY, MOD II, DOUBLE ROW, IN LINE 2.54[.100]E22, SHORT POINT CONTACTS

APPLICATION SPEC: SIZE: A1 CASE CODE: DRAWING NO: 00779C=87964

RESTRICTED TO: WEIGHT: A1 00779C=87964

CUSTOMER DRAWING SCALE: 5:1 SHEET: 1 OF 1 REV: J

Tyco Electronics Corporation
Harrisburg, PA 17105-3608



Компания «ЭлектроПласт» предлагает заключение долгосрочных отношений при поставках импортных электронных компонентов на взаимовыгодных условиях!

Наши преимущества:

- Оперативные поставки широкого спектра электронных компонентов отечественного и импортного производства напрямую от производителей и с крупнейших мировых складов;
- Поставка более 17-ти миллионов наименований электронных компонентов;
- Поставка сложных, дефицитных, либо снятых с производства позиций;
- Оперативные сроки поставки под заказ (от 5 рабочих дней);
- Экспресс доставка в любую точку России;
- Техническая поддержка проекта, помощь в подборе аналогов, поставка прототипов;
- Система менеджмента качества сертифицирована по Международному стандарту ISO 9001;
- Лицензия ФСБ на осуществление работ с использованием сведений, составляющих государственную тайну;
- Поставка специализированных компонентов (Xilinx, Altera, Analog Devices, Intersil, Interpoint, Microsemi, Aeroflex, Peregrine, Syfer, Eurofarad, Texas Instrument, Miteq, Cobham, E2V, MA-COM, Hittite, Mini-Circuits, General Dynamics и др.);

Помимо этого, одним из направлений компании «ЭлектроПласт» является направление «Источники питания». Мы предлагаем Вам помощь Конструкторского отдела:

- Подбор оптимального решения, техническое обоснование при выборе компонента;
- Подбор аналогов;
- Консультации по применению компонента;
- Поставка образцов и прототипов;
- Техническая поддержка проекта;
- Защита от снятия компонента с производства.



Как с нами связаться

Телефон: 8 (812) 309 58 32 (многоканальный)

Факс: 8 (812) 320-02-42

Электронная почта: org@eplast1.ru

Адрес: 198099, г. Санкт-Петербург, ул. Калинина, дом 2, корпус 4, литера А.