

FSB series(10,20,30A)

FSB -30 -324 -□

① ② ③ ④



The terminal cover is retracted inside the unit

Features of FSB series

EMI/EMC Filter for motor drive system (AC servo)

- Improve saturation resistance (There is such as performance improvement type “-254-HU”)
- Book type (Space-saving type)
- Quick and easy push-down terminal
Just connect the wires, push-down and tighten the screws with a screwdriver

Specifications

| No. | Items | FSB-10-324 | FSB-20-324 | FSB-30-324 |
|-----|--|---|------------|------------|
| 1 | Rated Voltage[V] | AC Three Phase 500 (voltage range:528 max) 50/60Hz *3 *4 | | |
| 2 | Rated Current[A] | 10 | 20 | 30 |
| 3 | Test Voltage (Terminal-Mounting Plate) | 2,800 VDC (Cutoff Current = 10mA), 1minute at room temperature and humidity *5 | | |
| 4 | Isolation Resistance (Terminal-Mounting Plate) | 500 VDC 100MΩ min at room temperature and humidity *6 | | |
| 5 | Leakage current 250/500V 60Hz | 12mA/24mA max | | |
| 6 | DC resistance | 100mΩ max | 38mΩ max | 20mΩ max |
| 7 | Safety agency approval temperatures | -25 to +85°C (Refer to Derating Curve) | | |
| 8 | Operating temperature | -40 to +85°C (Refer to Derating Curve) | | |
| 9 | Operating humidity | 20 to 95%RH (Non condensing) | | |
| 10 | Storage temperature/humidity | -40 to +85°C/20 to 95%RH (Non condensing) | | |
| 11 | Vibration | 10 to 55Hz, 19.6m/s ² (2G), 3min. Period, 1hour each X, Y and Z axis | | |
| 12 | Impact | 196.1m/s ² (20G), 11ms Once each X, Y and Z axis | | |
| 13 | Safety agency approvals | UL1283, CSA C22.2 No.8 (C-UL), DIN EN60939 VDE0565 Teil 3-1, ENEC | | |
| 14 | Case size (without projection) | 66 X 100 X 240 mm (W X H X D) [2.60 X 3.94 X 9.45 inches] (W X H X D) | | |
| 15 | Weight | 1.8kg max | | |

*3 Only capacitor code “355”, Three Phase Δ-connection : 400 (440 max), Y-connection : 500 (528 max)
 *4 Only “FSB-□□□□□□□□-U”, Three Phase 250 (275 max)
 *5 Only capacitor code “203”, “573”, “693”, “104”, 2,500VAC (Cutoff Current = 100mA), 1minute at room temperature and humidity.
 *6 Only capacitor code “335”, “355”, Isolation resistance specification is deleted.

- ① Model Name
- ② Rated Current
- ③ Line to ground capacitor code: See table 1.1.

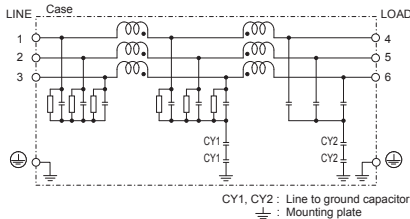
table1.1 Line to ground capacitor code

| Code | Leakage Current *1 Upper row : Δ-connection Lower row : Y-connection | Line to ground capacitor CY1 (nominal value) | Line to ground capacitor CY2 (nominal value) |
|--------|--|--|--|
| 203 | 1.0mA/2.0mA max 0.1mA/0.2mA max | 0.01μF | 0.01μF |
| 573 *2 | 2.5mA max/Not applicable 0.35mA max/Not applicable | 0.01μF | 0.047μF |
| 693 | 2.5mA/5.0mA max 0.35mA/0.7mA max | 0.022μF | 0.047μF |
| 104 | 3.5mA/7.0mA max 0.5mA/1.0mA max | 0.033μF | 0.068μF |
| 254 *2 | 12mA max/Not applicable 1.5mA max/Not applicable | 0.033μF | 0.22μF |
| 324 | 12mA/24mA max 1.5mA/3.0mA max | 0.1μF | 0.22μF |
| 335 *2 | 160mA max/Not applicable 20mA max/Not applicable | 0.033μF | 3.3μF |
| 355 | 180mA/270mA max 25mA/50mA max | 0.22μF | 3.3μF |

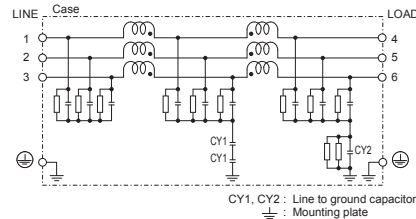
- * When the line to ground capacitor code is different, the attenuation characteristic is different.
- *1 Input 250/500V 60Hz (Only Δ-connection of “355” is 250/400V 60Hz)
- *2 Only “U” type is applied.
- ④ Option
 H : Ultra high-attenuation type
 U : Improve differential mode attenuation (Rated voltage 250V)
 Only “573”, “254”, “335” is applied.

Circuit Diagram

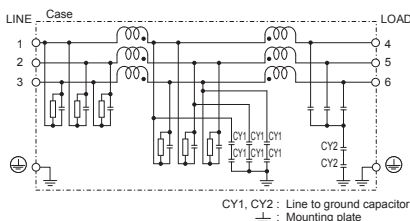
(1) Line to ground capacitor code : 203, 693, 104, 324



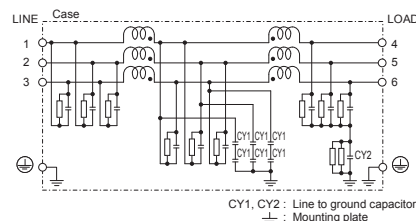
(2) Line to ground capacitor code : 355



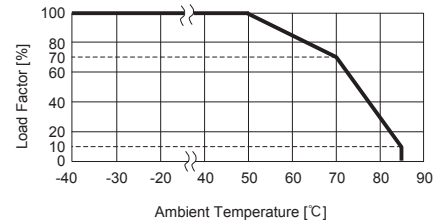
(3) Line to ground capacitor code : 573, 254
Option : U



(4) Line to ground capacitor code : 335
Option : U



Derating Curve

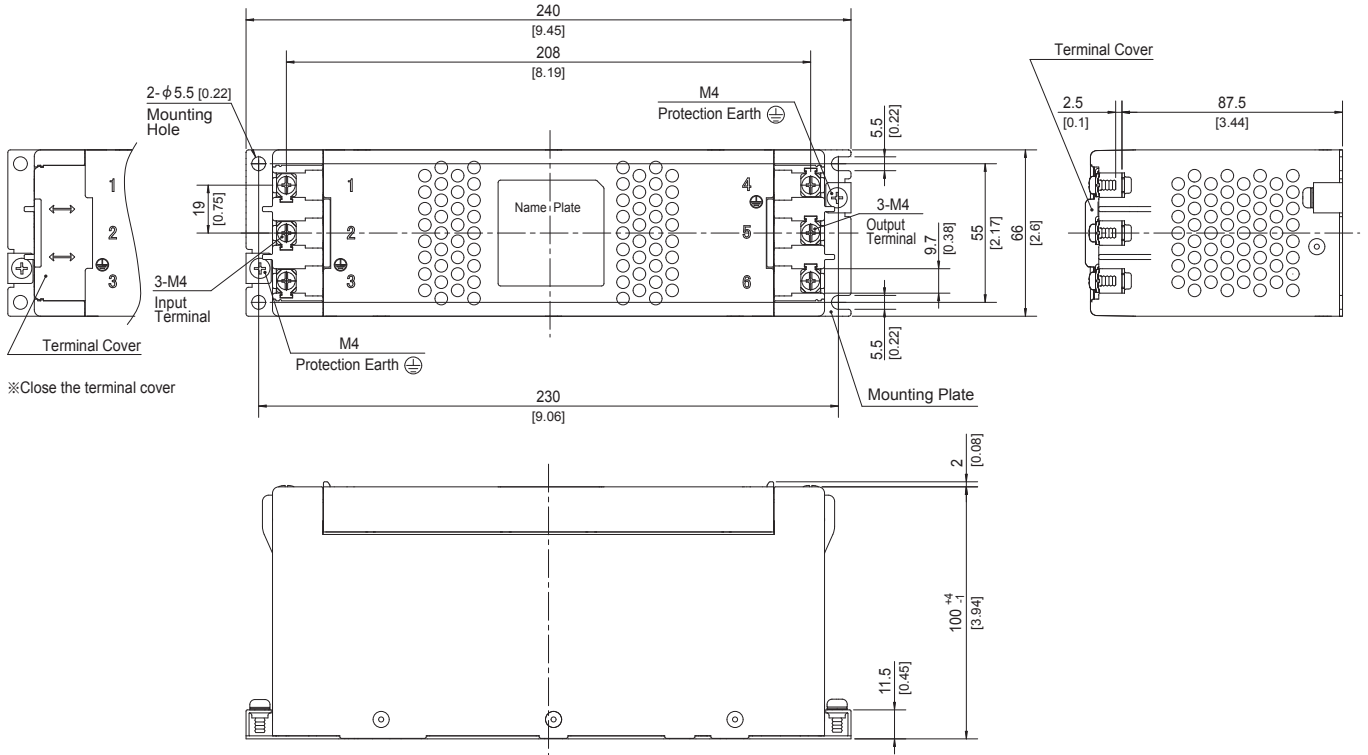


* Keep free ventilation holes for cooling.

External view

As this product is adopted push-down type terminal block, this appearance is as follows.

- ① The terminal cover is retracted inside the unit.
- ② The screws for connecting the terminals are held in the up right position.



※Close the terminal cover

- ※ Tolerance : ± 1 [± 0.04]
- ※ Weight : 1.8kg max
- ※ Mounting Plate : Hot-dip Galvanized Steel board $t=1.2$ [0.05]
- ※ Case : PBT
- ※ Dimensions in mm, []=inches
- ※ Terminal block screw tightening torque M4 : $1.6N \cdot m$ (16.9kgf·cm)max
- ※ Can not be mounted upside-down (mounted the top surface)
- ※ Keep free ventilation holes for cooling

Mouser Electronics

Authorized Distributor

Click to View Pricing, Inventory, Delivery & Lifecycle Information:

Cosel:

[FSB-30-104](#) [FSB-20-203](#) [FSB-10-693](#) [FSB-20-104](#) [FSB-10-203](#) [FSB-10-355](#) [FSB-10-254-HU](#) [FSB-20-254-HU](#)
[FSB-30-573-HU](#) [FSB-20-254-U](#) [FSB-20-203-H](#) [FSB-20-324](#) [FSB-10-573-HU](#) [FSB-10-335-HU](#) [FSB-30-573-U](#) [FSB-](#)
[30-335-HU](#) [FSB-20-324-H](#) [FSB-30-254-U](#) [FSB-20-573-U](#) [FSB-10-324-H](#) [FSB-30-335-U](#) [FSB-30-203-H](#) [FSB-30-104-](#)
[H](#) [FSB-20-335-HU](#) [FSB-10-693-H](#) [FSB-30-254-HU](#) [FSB-30-355-H](#) [FSB-10-324](#) [FSB-10-104](#) [FSB-20-104-H](#) [FSB-](#)
[30-324-H](#) [FSB-10-203-H](#) [FSB-10-104-H](#) [FSB-20-693-H](#) [FSB-30-693-H](#) [FSB-10-254-U](#) [FSB-20-335-U](#) [FSB-10-573-U](#)
[FSB-30-203](#) [FSB-30-324](#) [FSB-20-355-H](#) [FSB-10-355-H](#) [FSB-30-355](#) [FSB-20-693](#) [FSB-20-355](#) [FSB-30-693](#) [FSB-](#)
[20-573-HU](#) [FSB-10-335-U](#)



Компания «ЭлектроПласт» предлагает заключение долгосрочных отношений при поставках импортных электронных компонентов на взаимовыгодных условиях!

Наши преимущества:

- Оперативные поставки широкого спектра электронных компонентов отечественного и импортного производства напрямую от производителей и с крупнейших мировых складов;
- Поставка более 17-ти миллионов наименований электронных компонентов;
- Поставка сложных, дефицитных, либо снятых с производства позиций;
- Оперативные сроки поставки под заказ (от 5 рабочих дней);
- Экспресс доставка в любую точку России;
- Техническая поддержка проекта, помощь в подборе аналогов, поставка прототипов;
- Система менеджмента качества сертифицирована по Международному стандарту ISO 9001;
- Лицензия ФСБ на осуществление работ с использованием сведений, составляющих государственную тайну;
- Поставка специализированных компонентов (Xilinx, Altera, Analog Devices, Intersil, Interpoint, Microsemi, Aeroflex, Peregrine, Syfer, Eurofarad, Texas Instrument, Miteq, Cobham, E2V, MA-COM, Hittite, Mini-Circuits, General Dynamics и др.);

Помимо этого, одним из направлений компании «ЭлектроПласт» является направление «Источники питания». Мы предлагаем Вам помощь Конструкторского отдела:

- Подбор оптимального решения, техническое обоснование при выборе компонента;
- Подбор аналогов;
- Консультации по применению компонента;
- Поставка образцов и прототипов;
- Техническая поддержка проекта;
- Защита от снятия компонента с производства.



Как с нами связаться

Телефон: 8 (812) 309 58 32 (многоканальный)

Факс: 8 (812) 320-02-42

Электронная почта: org@eplast1.ru

Адрес: 198099, г. Санкт-Петербург, ул. Калинина, дом 2, корпус 4, литера А.