

2SP0320x2B0-12

Data Sheet

Compact, high-performance, plug-and-play dual-channel IGBT driver based on SCALE™-2 technology for individual and parallel-connected modules in 2-level, 3-level and multilevel converter topologies

Abstract

The SCALE™-2 plug-and-play driver 2SP0320x2B0-12 is a compact dual-channel intelligent gate driver designed for 1200V IGBT modules from Danfoss, Fuji or Infineon. The driver features an electrical interface (2SP0320T) or a fiber-optic interface (2SP0320V and 2SP0320S) with a built-in DC/DC power supply.

The turn-on and turn-off gate resistors of both channels are not assembled in order to provide maximum flexibility. They must be assembled by the user before start of operation. Please refer to the paragraph on "Gate Resistor Assembly" for the recommended gate resistors.

For drivers adapted to other types of high-power and high-voltage IGBT modules, refer to

www.IGBT-Driver.com/go/plug-and-play

Features

- ✓ Plug-and-play solution
- ✓ Allows parallel connection of IGBT modules
- ✓ For 2-level, 3-level and multilevel topologies
- ✓ Shortens application development time
- ✓ Extremely reliable; long service life
- ✓ Built-in DC/DC power supply
- ✓ 20-pin flat cable interface (2SP0320T)
- ✓ Fiber-optic links (2SP0320V & 2SP0320S)
- ✓ Duty cycle 0... 100%
- ✓ Active clamping of V_{ce} at turn-off
- ✓ IGBT short-circuit protection
- ✓ Monitoring of supply voltage
- ✓ Safe isolation to EN 50178
- ✓ UL compliant
- ✓ Suitable for 1200V IGBT modules
- ✓ Gate resistors not assembled

Applications

- ✓ Wind-power converters
- ✓ Industrial drives
- ✓ UPS
- ✓ Power-factor correctors
- ✓ Traction
- ✓ Railroad power supplies
- ✓ Welding
- ✓ SMPS
- ✓ Radiology and laser technology
- ✓ Research
- ✓ and many others

Data Sheet

Safety Notice!

The data contained in this data sheet is intended exclusively for technically trained staff. Handling all high-voltage equipment involves risk to life. Strict compliance with the respective safety regulations is mandatory!

Any handling of electronic devices is subject to the general specifications for protecting electrostatic-sensitive devices according to international standard IEC 60747-1, Chapter IX or European standard EN 100015 (i.e. the workplace, tools, etc. must comply with these standards). Otherwise, this product may be damaged.

Important Product Documentation

This data sheet contains only product-specific data. For a detailed description, must-read application notes and common data that apply to the whole series, please refer to "Description & Application Manual for 2SP0320T SCALE-2 IGBT Drivers" (electrical interface) or "Description & Application Manual for 2SP0320V and 2SP0320S SCALE-2 IGBT Drivers" (fiber-optic interface) on www.power.com/igbt-driver/go/2SP0320.

The gate resistors on this gate driver are not assembled in order to provide maximum flexibility. For the gate resistors required for specific IGBT modules, refer to the paragraph on "Gate Resistor Assembly". Use of gate resistors other than those specified may result in failure.

Mechanical Dimensions

Dimensions: See the relevant "Description and Application Manual"

Mounting principle: Connected to IGBT module with screws

Fiber-Optic Interfaces

Interface	Remarks	Part type #
Drive signal input	2SP0320V, fiber-optic receiver (Notes 21, 22)	HFBR-2522ETZ
Drive signal input	2SP0320S, fiber-optic receiver (Notes 21, 22)	HFBR-2412Z
Status output	2SP0320V, fiber-optic transmitter (Notes 21, 23)	HFBR-1522ETZ
Status output	2SP0320S, fiber-optic transmitter (Notes 21, 23)	HFBR-1412Z

Data Sheet

Absolute Maximum Ratings

Parameter	Remarks	Min	Max	Unit
Supply voltage V_{DC}	VDC to GND	0	16	V
Supply voltage V_{CC}	VCC to GND (Note 1)	0	16	V
Logic input and output voltages	To GND	-0.5	VCC+0.5	V
SO _x current	Fault condition, total current		20	mA
Gate peak current I_{out}	Note 2	-20	+20	A
Average supply current I_{DC}	2SP0320T (Note 24)		600	mA
Average supply current I_{DC}	2SP0320V and 2SP0320S (Note 24)		690	mA
Output power per gate	Ambient temperature <70°C (Note 3)		3	W
	Ambient temperature 85°C (Note 3)		2	W
Turn-on gate resistance	Note 17	0.3		Ω
Turn-off gate resistance	Note 17	1		Ω
Switching frequency F	Note 29		n.d.	kHz
Test voltage (50Hz/1min.)	Primary to secondary (Note 19)		3800	$V_{AC(eff)}$
	Secondary to secondary (Note 19)		3800	$V_{AC(eff)}$
DC-link voltage	Note 4		930	V
dV/dt	Rate of change of input to output voltage		50	kV/μs
Operating voltage	Primary/secondary, secondary/secondary		1200	V_{peak}
Operating temperature		-40	85	°C
Storage temperature		-40	90	°C

Recommended Operating Conditions

Power Supply	Remarks	Min	Typ	Max	Unit
Supply voltage V_{DC}	To GND (Note 1)	14.5	15	15.5	V
Supply voltage V_{CC}	To GND (Note 1)	14.5	15	15.5	V
Resistance from TB to GND	2SP0320T, blocking time≠0, ext. value	128		∞	kΩ
SO _x current	Fault condition, 3.3V logic			4	mA

Data Sheet

Electrical Characteristics

Power Supply	Remarks	Min	Typ	Max	Unit
Supply current I_{DC}	2SP0320T, without load		37		mA
	2SP0320V and 2SP0320S, without load		145		mA
Efficiency η	Internal DC/DC converter		85		%
Supply current I_{CC}	Without load		19		mA
Coupling capacitance C_{io}	Primary side to secondary side, total, per channel				
		2SP0320T		20	pF
		2SP0320V and 2SP0320S		15	pF
Power Supply Monitoring	Remarks	Min	Typ	Max	Unit
Supply threshold V_{CC}	Primary side, clear fault	11.9	12.6	13.3	V
	Primary side, set fault (Note 5)	11.3	12.0	12.7	V
Monitoring hysteresis	Primary side, set/clear fault	0.35			V
Supply threshold $V_{isoX}-V_{eex}$	Secondary side, clear fault	12.1	12.6	13.1	V
	Secondary side, set fault (Note 26)	11.5	12.0	12.5	V
Monitoring hysteresis	Secondary side, set/clear fault	0.35			V
Supply threshold $V_{eex}-V_{COMx}$	Secondary side, clear fault	5	5.15	5.3	V
	Secondary side, set fault (Note 26)	4.7	4.85	5	V
Monitoring hysteresis	Secondary side, set/clear fault	0.15			V
Logic Inputs and Outputs	Remarks	Min	Typ	Max	Unit
Input impedance	2SP0320T, $V(INx) > 3V$ (Note 6)	3.5	4.1	4.6	k Ω
Turn-on threshold	2SP0320T, $V(INx)$ (Note 7)		2.6		V
Turn-off threshold	2SP0320T, $V(INx)$ (Note 7)		1.3		V
SOx output voltage	Fault condition, $I(SOx) < 8mA$			0.7	V
Short-circuit Protection	Remarks	Min	Typ	Max	Unit
Vce-monitoring threshold	Between auxiliary terminals		10.2		V
Response time	DC-link voltage $> 550V$ (Note 8)		6.9		μs
Delay to IGBT turn-off	After the response time (Note 9)		1.4		μs
Blocking time	2SP0320T, after fault (Note 10)		90		ms

Data Sheet

Timing Characteristics	Remarks	Min	Typ	Max	Unit
Turn-on delay $t_{d(on)}$	2SP0320T (Note 11)		90		ns
Turn-off delay $t_{d(off)}$	2SP0320T (Note 11)		90		ns
Jitter of turn-on delay	2SP0320T (Note 28)		±2		ns
Jitter of turn-off delay	2SP0320T (Note 28)		±2		ns
Turn-on delay $t_{d(on)}$	2SP0320V and 2SP0320S (Note 12)		120		ns
Turn-off delay $t_{d(off)}$	2SP0320V and 2SP0320S (Note 12)		100		ns
Output rise time $t_{r(out)}$	G_x to E_x (Note 13)		7		ns
Output fall time $t_{f(out)}$	G_x to E_x (Note 13)		25		ns
Dead time between outputs	2SP0320T, half-bridge mode (Note 20)		3		µs
Jitter of dead time	2SP0320T, half-bridge mode		±100		ns
Transmission delay of fault state	2SP0320T (Note 14)		450		ns
Transmission delay of fault state	2SP0320V and 2SP0320S (Note 25)		90		ns
Delay to clear fault state	2SP0320V and 2SP0320S (Note 15)		11		µs
Acknowledge delay time	2SP0320V and 2SP0320S (Note 16)		220		ns
Acknowledge pulse width	2SP0320V and 2SP0320S (on host side)		700	1050	ns
Outputs	Remarks	Min	Typ	Max	Unit
Turn-on gate resistor $R_{g(on)}$	Note 17		not assembled		Ω
Turn-off gate resistor $R_{g(off)}$	Note 17		not assembled		Ω
Gate voltage at turn-on			15		V
Gate-voltage at turn-off	2SP0320T / (2SP0320V & 2SP0320S)				
	P = 0W		-10.4/-9.9		V
	P = 0.3W		-10.2/-9.8		V
	P = 2.1W		-9.7/-9.5		V
	P = 3W		-9.6/-9.4		V
Gate resistance to COMx			4.7		kΩ
dV/dt Feedback	Remarks	Implementation			
dV/dt feedback	Note 18		No		
Electrical Isolation	Remarks	Min	Typ	Max	Unit
Test voltage (50Hz/1s)	Primary to secondary side (Note 19)	3800	3850	3900	V_{eff}
	Secondary to secondary side (Note 19)	3800	3850	3900	V_{eff}
Partial discharge extinction volt.	Primary to secondary side (Note 27)	1220			V_{peak}
	Secondary to secondary side (Note 27)	1200			V_{peak}
Creepage distance	Primary to secondary side	20			mm
	Secondary to secondary side	17			mm

All data refer to +25°C and $V_{CC} = V_{DC} = 15V$ unless otherwise specified

Footnotes to the Key Data

- Both supply voltages V_{DC} and V_{CC} should be applied in parallel.
- The gate current is limited by the gate resistors located on the driver.

Data Sheet

- 3) If the specified value is exceeded, this indicates a driver overload. It should be noted that the driver is not protected against overload. From 70°C to 85°C, the maximum permissible output power can be linearly interpolated from the given data.
- 4) This limit is due to active clamping. It is higher than for the standard types. It is therefore absolutely necessary to check the RBSOA of the IGBT modules in worst case condition to avoid excessive turn-off overvoltage. Refer to "Description & Application Manual for 2SP0320T SCALE-2 IGBT Drivers" (electrical interface) or "Description & Application Manual for 2SP0320V and 2SP0320S SCALE-2 IGBT Drivers" (fiber-optic interface).
- 5) Undervoltage monitoring of the primary-side supply voltage (VCC to GND). If the voltage drops below this limit, a fault is transmitted to the corresponding output(s) (2SP0320T/2SP0320V/2SP0320S) and the IGBTs are switched off (only 2SP0320T).
- 6) The input impedance can be modified to values < 18 kΩ (customer-specific solution).
- 7) Turn-on and turn-off threshold values can be increased (customer-specific solution).
- 8) The resulting pulse width of the direct output of the gate drive unit for short-circuit type I (excluding the delay of the gate resistors) is the sum of response time plus delay to IGBT turn-off.
- 9) The turn-off event of the IGBT is delayed by the specified time after the response time.
- 10) Factory set value. The blocking time can be reduced with an external resistor. Refer to "Description & Application Manual for 2SP0320T SCALE-2 IGBT Drivers".
- 11) Measured from the transition of the turn-on or turn-off command at the driver input to direct output of the gate drive unit (excluding the delay of the gate resistors).
- 12) Including the delay of the external fiber-optic links. Measured from the transition of the turn-on or turn-off command at the optical transmitter on the host controller side to the direct output of the gate drive unit (excluding the delay of the gate resistors).
- 13) Refers to the direct output of the gate drive unit (excluding the delay of the gate resistors).
- 14) Transmission delay of the fault state from the secondary side to the primary status outputs.
- 15) Measured on the host side. The fault status on the secondary side is automatically reset after the specified time.
- 16) Including the delay of the external fiber-optic links. Measured from the transition of the turn-on or turn-off command at the optical transmitter on the host controller side to the transition of the acknowledge signal at the optical receiver on the host controller side.
- 17) The gate resistors are not assembled on this IGBT gate driver. They must be assembled by the user according to the paragraph on "Gate Resistor Assembly".
- 18) A dV/dt feedback can optionally be implemented in order to reduce the rate of rise of the collector emitter voltage of the IGBTs at turn-off (customer-specific solution).
- 19) HiPot testing (= dielectric testing) must generally be restricted to suitable components. This gate driver is suited for HiPot testing. Nevertheless, it is strongly recommended to limit the testing time to 1s slots as stipulated by EN 50178. Excessive HiPot testing at voltages much higher than 850V_{AC(eff)} may lead to insulation degradation. No degradation has been observed over 1min. testing at 3800V_{AC(eff)}. The transformer of every production sample shipped to customers has undergone 100% testing at the given value or higher (<5100V_{eff}) for 1s.
- 20) Note that the dead time may vary from sample to sample. A tolerance of approximately ±20% may be expected. If higher timing precisions are required, Power Integrations recommends using direct mode and generating the dead time externally.
- 21) The transceivers required on the host controller side are not supplied with the gate driver. It is recommended to use the same types as used in the gate driver. For product information refer to www.power.com/igbt-driver/go/fiberoptics.
- 22) The recommended transmitter current at the host controller is 20mA. A higher current may increase jitter or delay at turn-off.
- 23) The typical transmitter current at the gate driver is 18mA. In case of supply undervoltage, the minimum transmitter current at the gate driver is 12mA: this is suitable for adequate plastic optical fibers with a length of up to 10 meters.
- 24) If the specified value is exceeded, this indicates a driver overload. It should be noted that the driver is not protected against overload.
- 25) Delay of external fiber-optic links. Measured from the driver secondary side (ASIC output) to the optical receiver on the host controller.

Data Sheet

- 26) Undervoltage monitoring of the secondary-side supply voltage (Visox to Veex and Veex to COMx which correspond with the approximate turn-on and turn-off gate-emitter voltages). If the corresponding voltage drops below this limit, the IGBT is switched off and a fault is transmitted to the corresponding output.
- 27) Partial discharge measurement is performed in accordance with IEC 60270 and isolation coordination specified in EN 50178. The partial discharge extinction voltage between primary and either secondary side is coordinated for safe isolation to EN 50178.
- 28) Jitter measurements are performed with input signals INx switching between 0V and 15V referred to GND, with a corresponding rise time and fall time of 8ns.
- 29) The maximum switching frequency is not defined, as it depends on the IGBT module used. Please consult the corresponding driver data sheet for more information.

Gate Resistor Assembly

The turn-on and turn-off gate resistors of 2SP0320x2B0 drivers are adapted to their respective IGBT modules. Recommended gate resistors are: PR02 / 2W / 5% from Vishay.

The following versions exist:

1200V IGBT Type	R120/R121/ R220/R221	R122/R123 / R222/R223	Resulting Rg,on	Resulting Rg,off
FF450R12IE4	5.1Ω	6.8Ω	2.55Ω	3.4Ω
FF600R12IE4	3.6Ω	6.8Ω	1.8Ω	3.4Ω
2MBI900VXA-120E-50	3.3Ω	5.1Ω	1.65Ω	2.55Ω
2MBI900VXA-120P-50	4.3Ω	3.3Ω	2.15Ω	1.65Ω
FF900R12IE4	2.7Ω	6.8Ω	1.35Ω	3.4Ω
FF900R12IP4	3.3Ω	6.8Ω	1.65Ω	3.4Ω
FF1200R12IE5	1.8Ω	3.9Ω	0.9Ω	1.95Ω
2MBI1400VXB-120E-50	2Ω	3Ω	1Ω	1.5Ω
2MBI1400VXB-120P-50	3.3Ω	3.3Ω	1.65Ω	1.65Ω
DP1400B1200T103714	2Ω	4.7Ω	1Ω	2.35Ω
FF1400R12IP4	2Ω	6.8Ω	1Ω	3.4Ω

For the component position, refer to Fig. 1.

Data Sheet

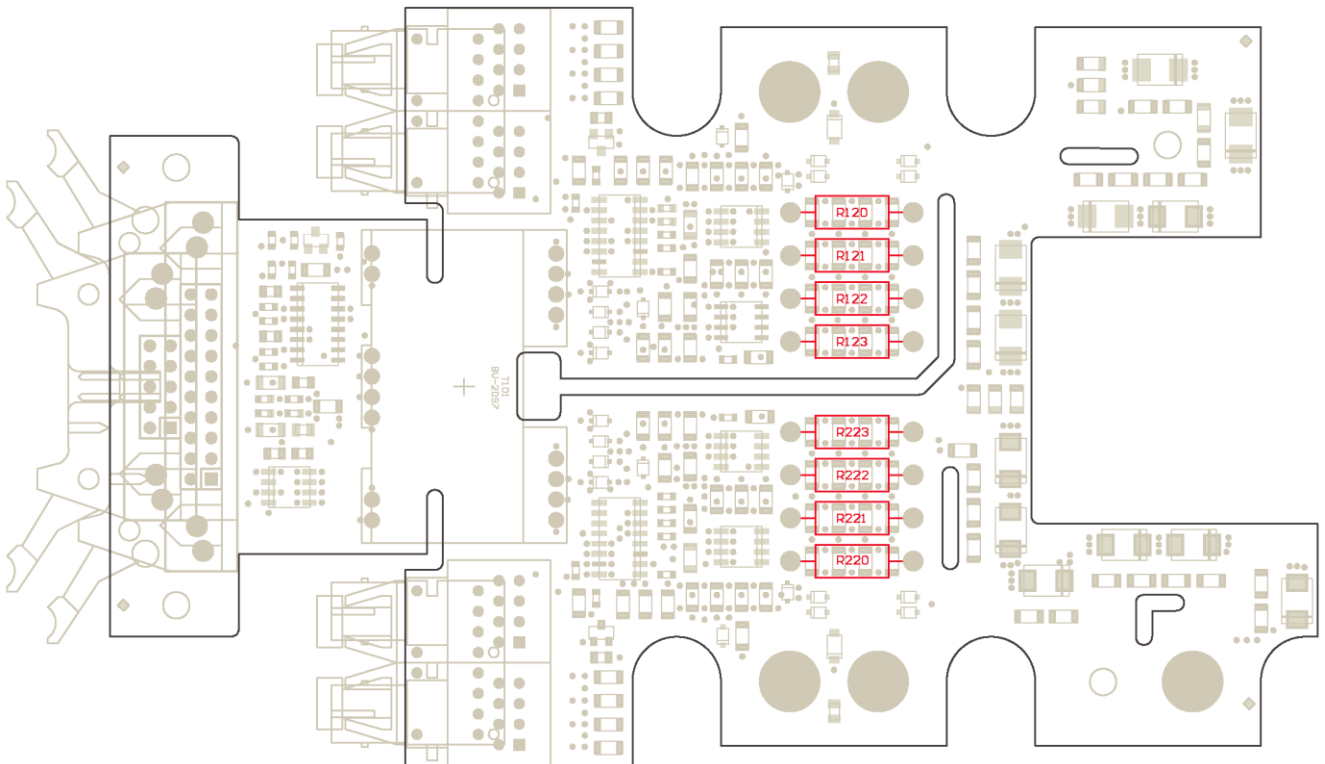
Assembly Drawing

Fig. 1: Assembly drawing of 2SP0320 with highlighted gate resistors

Note that the wires of the gate resistors should not project more than 1.6mm after soldering (excess length at bottom side). Furthermore, a minimum distance of 1mm must be maintained between the gate resistor body and the PCB.

Legal Disclaimer

The statements, technical information and recommendations contained herein are believed to be accurate as of the date hereof. All parameters, numbers, values and other technical data included in the technical information were calculated and determined to our best knowledge in accordance with the relevant technical norms (if any). They may base on assumptions or operational conditions that do not necessarily apply in general. We exclude any representation or warranty, express or implied, in relation to the accuracy or completeness of the statements, technical information and recommendations contained herein. No responsibility is accepted for the accuracy or sufficiency of any of the statements, technical information, recommendations or opinions communicated and any liability for any direct, indirect or consequential loss or damage suffered by any person arising therefrom is expressly disclaimed.

Data Sheet

Ordering Information

Our international terms and conditions of sale apply.

Interface	Power Integrations Driver Type #	Related IGBT
Electrical Interface	2SP0320T2B0-12	1200V IGBT modules
Fiber-Optic Interface ¹⁾	2SP0320V2B0-12	1200V IGBT modules

¹⁾ Fiber-optic interface with versatile link (HFBR-2522ETZ and HFBR-1522ETZ)

2SP0320x2B0-12 drivers feature an increased active clamping level compared to the standard versions 2SP0320x2A0-12

Product home page: www.power.com/igbt-driver/go/2SP0320

Refer to www.power.com/igbt-driver/go/nomenclature for information on driver nomenclature

Information about Other Products

For other drivers, evaluation systems product documentation and application support

Please click: www.power.com/igbt-driver

Data Sheet

Power Integrations Sales Offices
WORLD HEADQUARTERS

5245 Hellyer Avenue
San Jose, CA 95138 USA
Tel: +1-408-414-9200
Fax: +1-408-414-9765
Email: usasales@power.com

AMERICAS WEST

5245 Hellyer Avenue
San Jose, CA 95138 USA
Tel: +1-408-414-8778
Fax: +1-408-414-3760
Email: usasales@power.com

GERMANY (AC-DC/LED Sales)

Lindwurmstrasse 114
80337 München, Germany
Tel: +49-89-5527-39100
Fax: +49-89-1228-5374
Email: eurosales@power.com

INDIA (Mumbai)

Unit: 106-107, Sagar Tech Plaza-B
Sakinaka, Andheri Kurla Road
Mumbai, Maharashtra 400072 India
Tel 1: +91-22-4003-3700
Tel 2: +91-22-4003-3600
Email: indiasales@power.com

JAPAN

Kosei Dai-3 Bldg.
2-12-11, Shin-Yokohama, Kohoku-ku
Yokohama-shi, Kanagawa
Japan 222-0033
Tel: +81-45-471-1021
Fax: +81-45-471-3717
Email: japansales@power.com

TAIWAN

5F, No. 318, Nei Hu Rd., Sec. 1
Nei Hu Dist.
Taipei, 114 Taiwan
Tel: +886-2-2659-4570
Fax: +886-2-2659-4550
Email: taiwansales@power.com

AMERICAS EAST

7360 McGinnis Ferry Road
Suite 225
Suwanee, GA 30024 USA
Tel: +1-678-957-0724
Fax: +1-678-957-0784
Email: usasales@power.com

CHINA (Shanghai)

Room 2410, Charity Plaza
No. 88 North Caoxi Road
Shanghai, 200030 China
Tel: +86-21-6354-6323
Fax: +86-21-6354-6325
Email: chinasales@power.com

GERMANY (Gate Driver Sales)

HellwegForum 1
59469 Ense, Germany
Tel: +49-2938-64-39990
Email: igbt-driver.sales@power.com

INDIA (New Dehli)

#45, Top Floor
Okhla Industrial Area, Phase - III
New Dehli, 110020 India
Tel 1: +91-11-4055-2351
Tel 2: +91-11-4055-2353
Email: indiasales@power.com

KOREA

RM602, 6FL, 22
Teheran-ro 87-gil, Gangnam-gu
Seoul, 06164 Korea
Tel: +82-2-2016-6610
Fax: +82-2-2016-6630
Email: koreasales@power.com

UNITED KINGDOM

Bulding 5, Suite 21
The Westbrook Centre
Milton Road
Cambridge, CB4 1YG United Kingdom
Tel: +44-7823-557-484
Email: eurosales@power.com

AMERICAS CENTRAL

333 Sheridan Road
Winnetka, IL 60093 USA
Tel: +1-847-721-6293
Email: usasales@power.com

CHINA (Shenzhen)

17/F, Hivac Building, No 2
Keji South 8th Road, Nanshan District
Shenzhen, 518057 China
Tel: +86-755-8672-8689
Fax: +86-755-8672-8690
Email: chinasales@power.com

INDIA (Bangalore)

#1, 14th Main Road
Vasanthangar
Bangalore, 560052 India
Tel 1: +91-80-4113-8020
Tel 2: +91-80-4113-8028
Fax: +91-80-4113-8023
Email: indiasales@power.com

ITALY

Via Milanese 20
20099 Sesto San Giovanni (MI), Italy
Tel: +39-02-4550-8708
Email: eurosales@power.com

SINGAPORE

51 Newton Road
#19-01/05 Goldhill Plaza
Singapore, 308900
Tel 1: +65-6358-2160
Tel 2: +65-6358-4480
Fax: +65-6358-2015
Email: singaporesales@power.com

Mouser Electronics

Authorized Distributor

Click to View Pricing, Inventory, Delivery & Lifecycle Information:

Power Integrations:

[2SP0320T2B0C-FF1400R12IP4](#) [2SP0320T2B0-2MBI900VXA-120P-50](#) [2SP0320T2B0C-2MBI900VXA-120E-50](#)
[2SP0320T2B0C-2MBI900VXA-120P-50](#) [2SP0320T2B0-FF600R12IE4](#) [2SP0320T2B0-2MBI1400VXB-120E-50](#)
[2SP0320T2B0C-FF900R12IE4](#) [2SP0320T2B0-FF1200R12IE5](#) [2SP0320T2B0C-2MBI1400VXB-120E-50](#)
[2SP0320T2B0C-FF450R12IE4](#) [2SP0320T2B0-FF900R12IP4](#) [2SP0320T2B0-DP1400B1200T103714](#) [2SP0320T2B0-FF900R12IE4](#) [2SP0320T2B0-FF450R12IE4](#) [2SP0320T2B0C-FF900R12IP4](#) [2SP0320T2B0C-2MBI1400VXB-120P-50](#)
[2SP0320T2B0C-FF600R12IE4](#) [2SP0320T2B0C-DP1400B1200T103714](#) [2SP0320T2B0C-FF1200R12IE5](#)
[2SP0320T2B0-2MBI900VXA-120E-50](#)



Компания «ЭлектроПласт» предлагает заключение долгосрочных отношений при поставках импортных электронных компонентов на взаимовыгодных условиях!

Наши преимущества:

- Оперативные поставки широкого спектра электронных компонентов отечественного и импортного производства напрямую от производителей и с крупнейших мировых складов;
- Поставка более 17-ти миллионов наименований электронных компонентов;
- Поставка сложных, дефицитных, либо снятых с производства позиций;
- Оперативные сроки поставки под заказ (от 5 рабочих дней);
- Экспресс доставка в любую точку России;
- Техническая поддержка проекта, помощь в подборе аналогов, поставка прототипов;
- Система менеджмента качества сертифицирована по Международному стандарту ISO 9001;
- Лицензия ФСБ на осуществление работ с использованием сведений, составляющих государственную тайну;
- Поставка специализированных компонентов (Xilinx, Altera, Analog Devices, Intersil, Interpoint, Microsemi, Aeroflex, Peregrine, Syfer, Eurofarad, Texas Instrument, Miteq, Cobham, E2V, MA-COM, Hittite, Mini-Circuits, General Dynamics и др.);

Помимо этого, одним из направлений компании «ЭлектроПласт» является направление «Источники питания». Мы предлагаем Вам помощь Конструкторского отдела:

- Подбор оптимального решения, техническое обоснование при выборе компонента;
- Подбор аналогов;
- Консультации по применению компонента;
- Поставка образцов и прототипов;
- Техническая поддержка проекта;
- Защита от снятия компонента с производства.



Как с нами связаться

Телефон: 8 (812) 309 58 32 (многоканальный)

Факс: 8 (812) 320-02-42

Электронная почта: org@eplast1.ru

Адрес: 198099, г. Санкт-Петербург, ул. Калинина, дом 2, корпус 4, литера А.