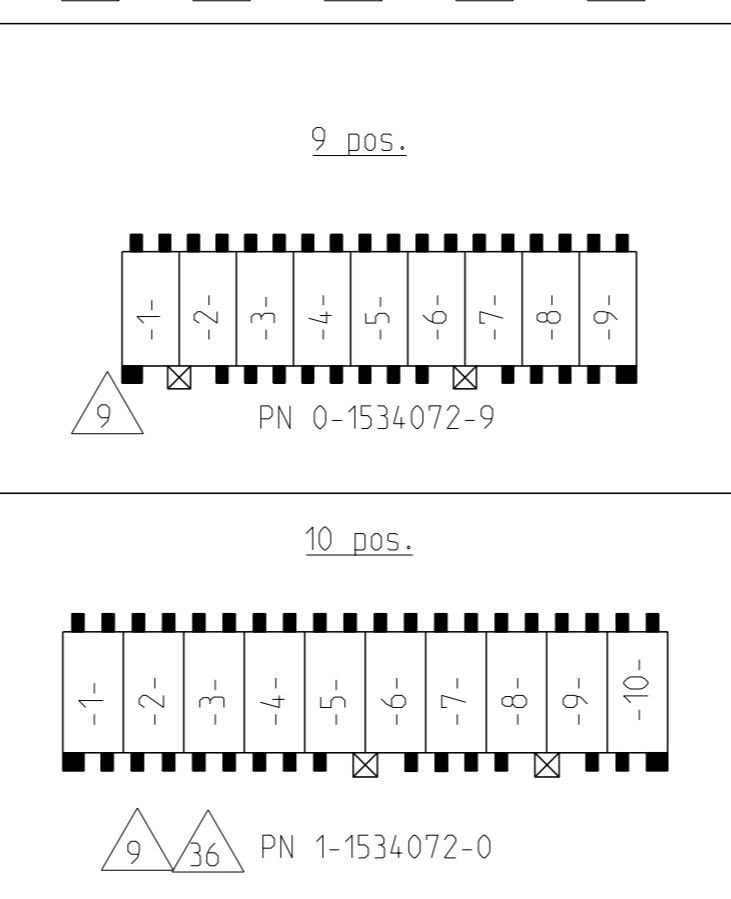
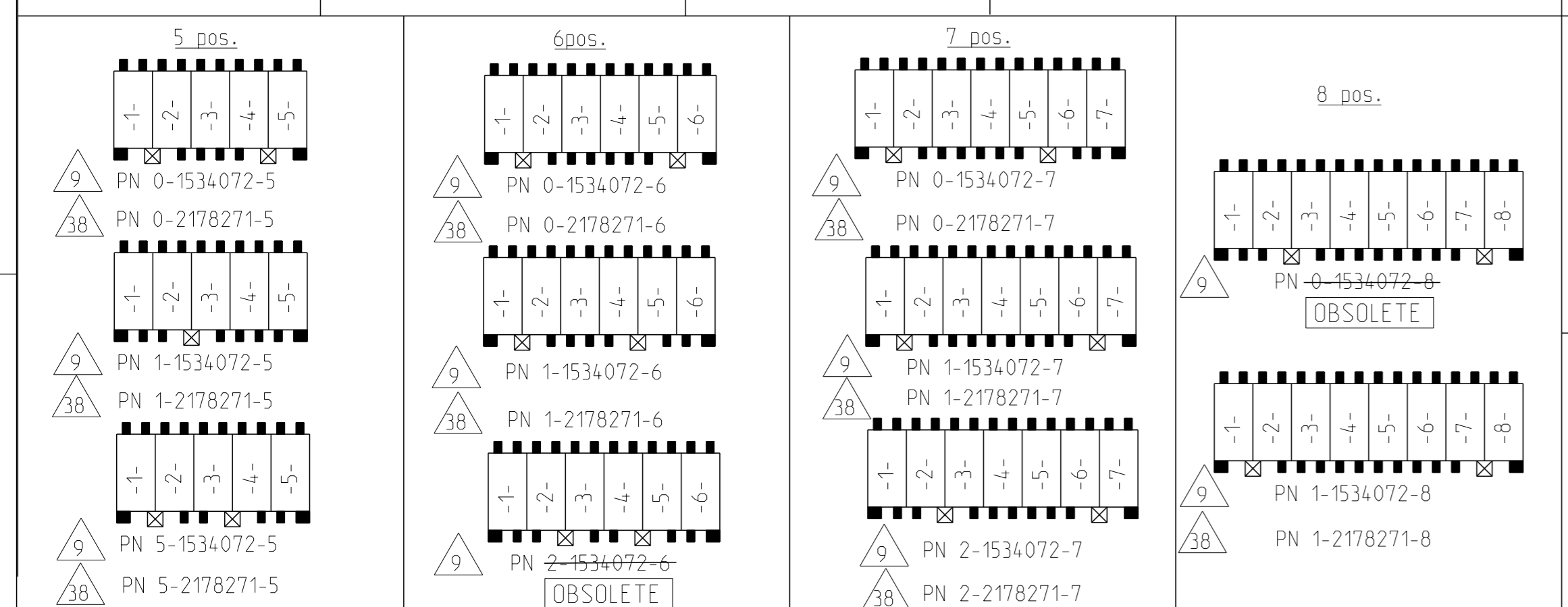
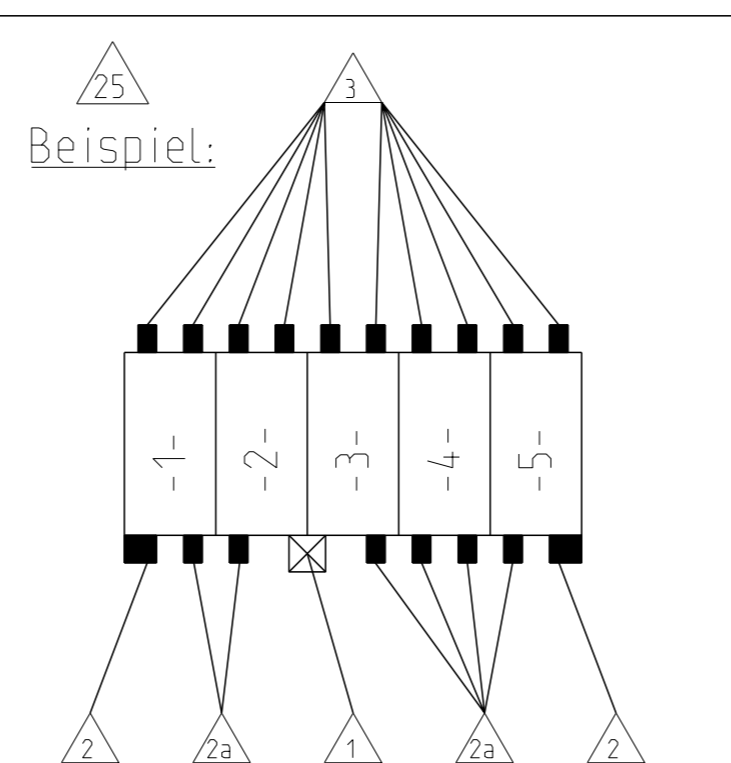
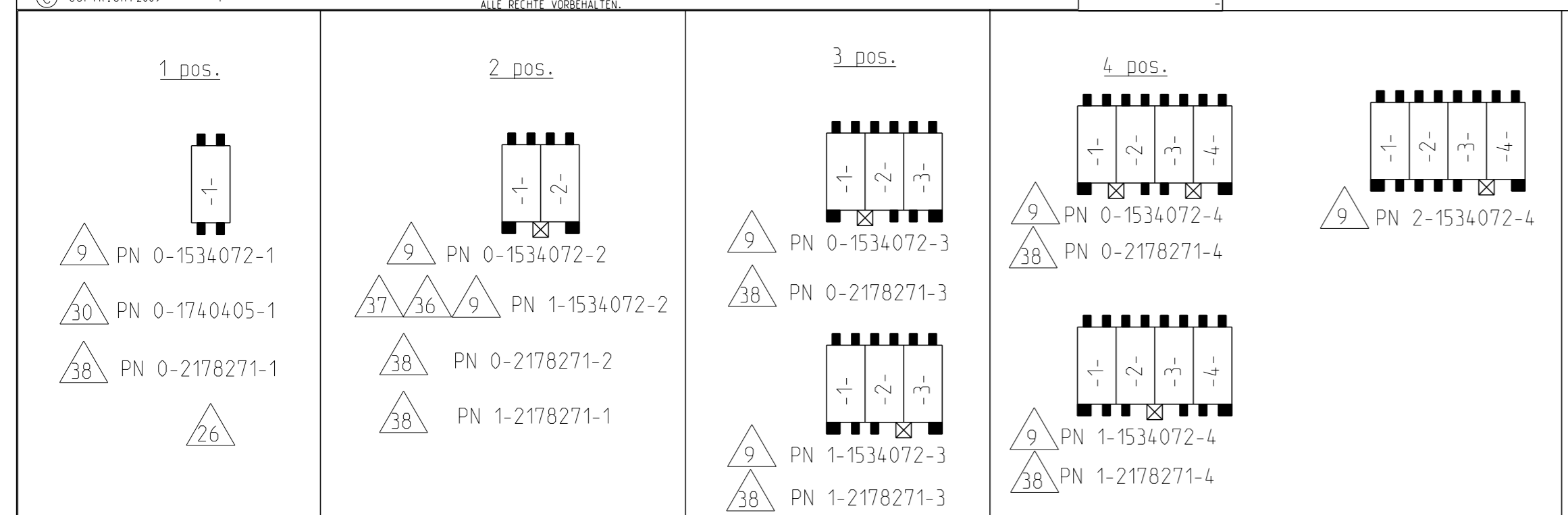
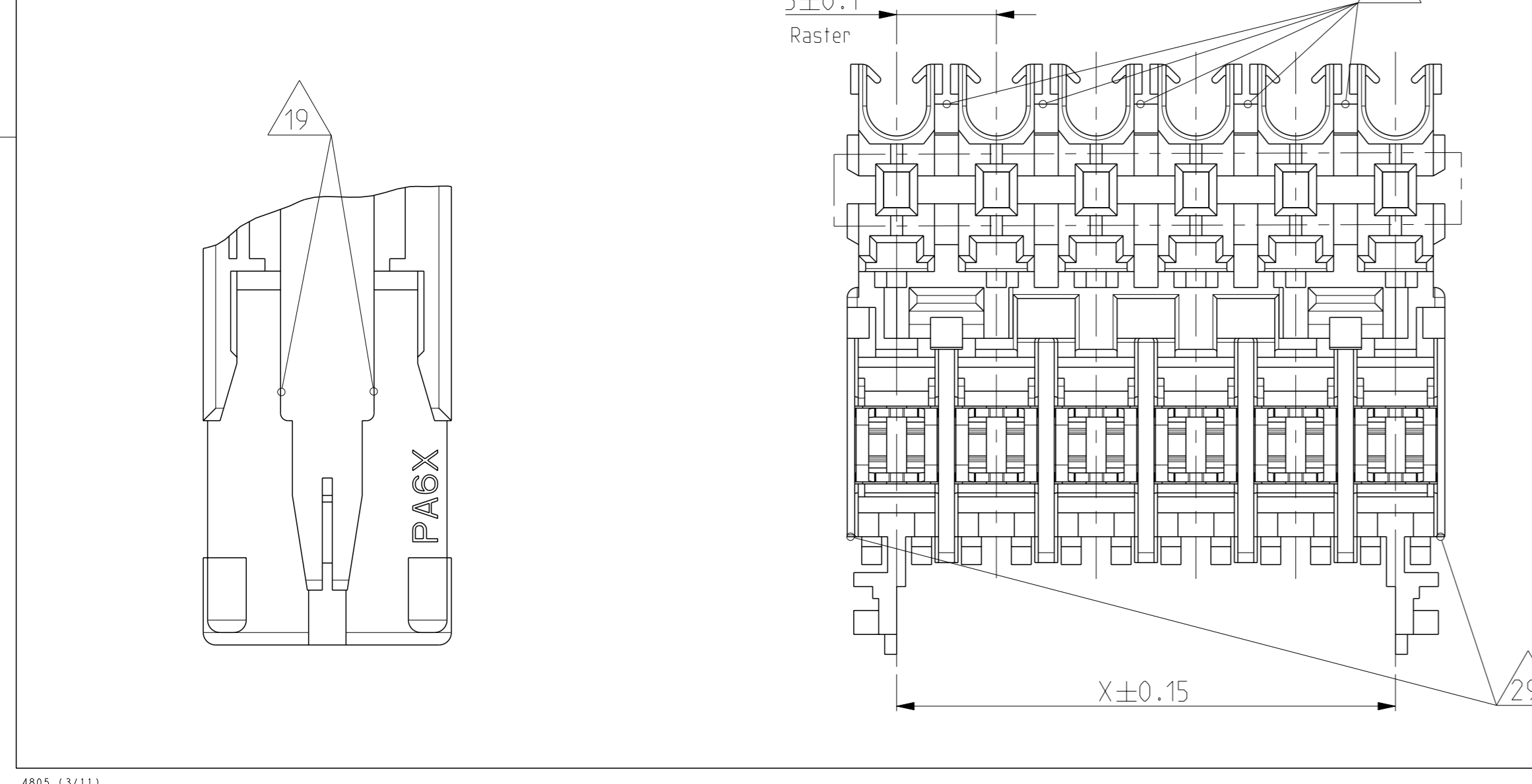
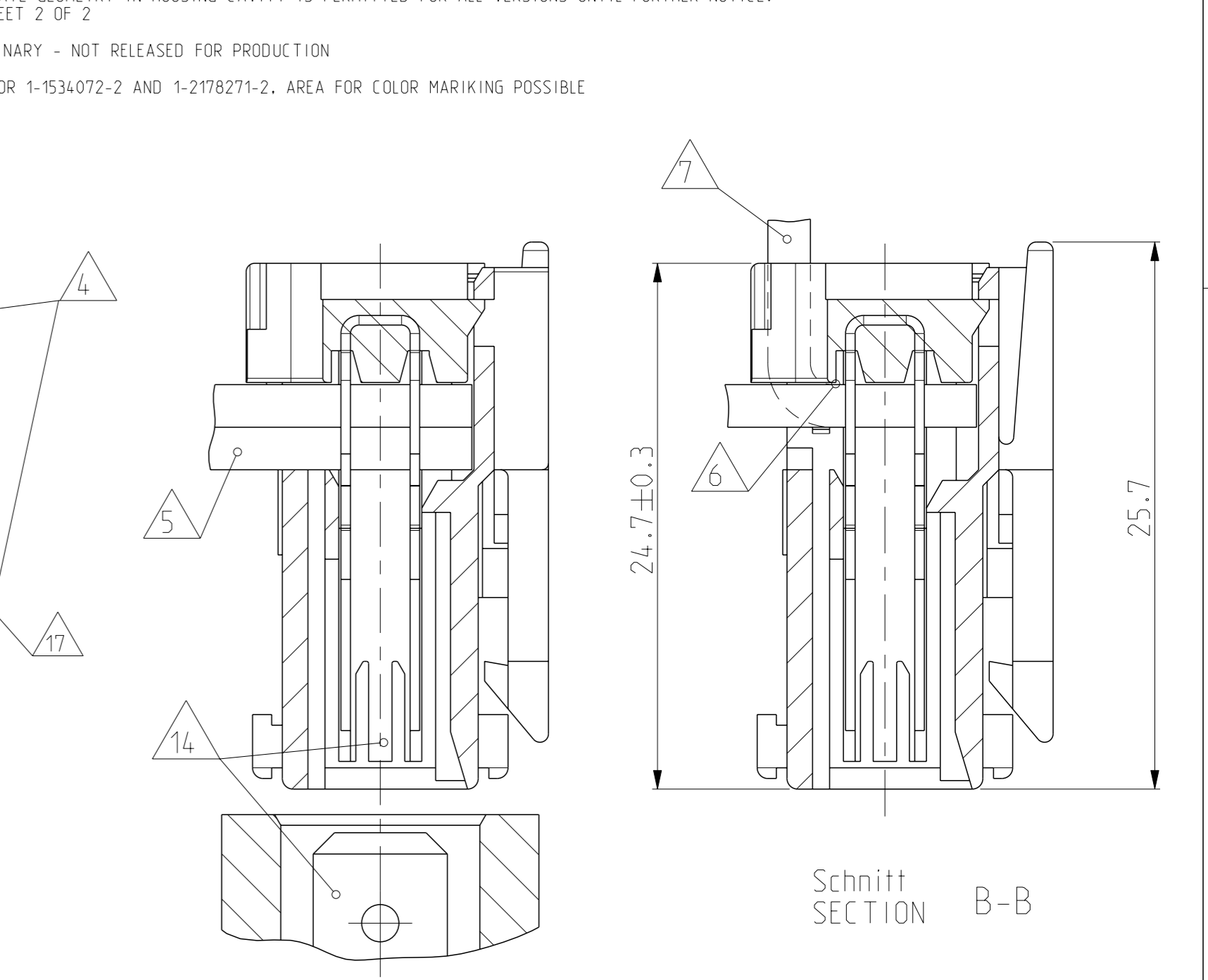
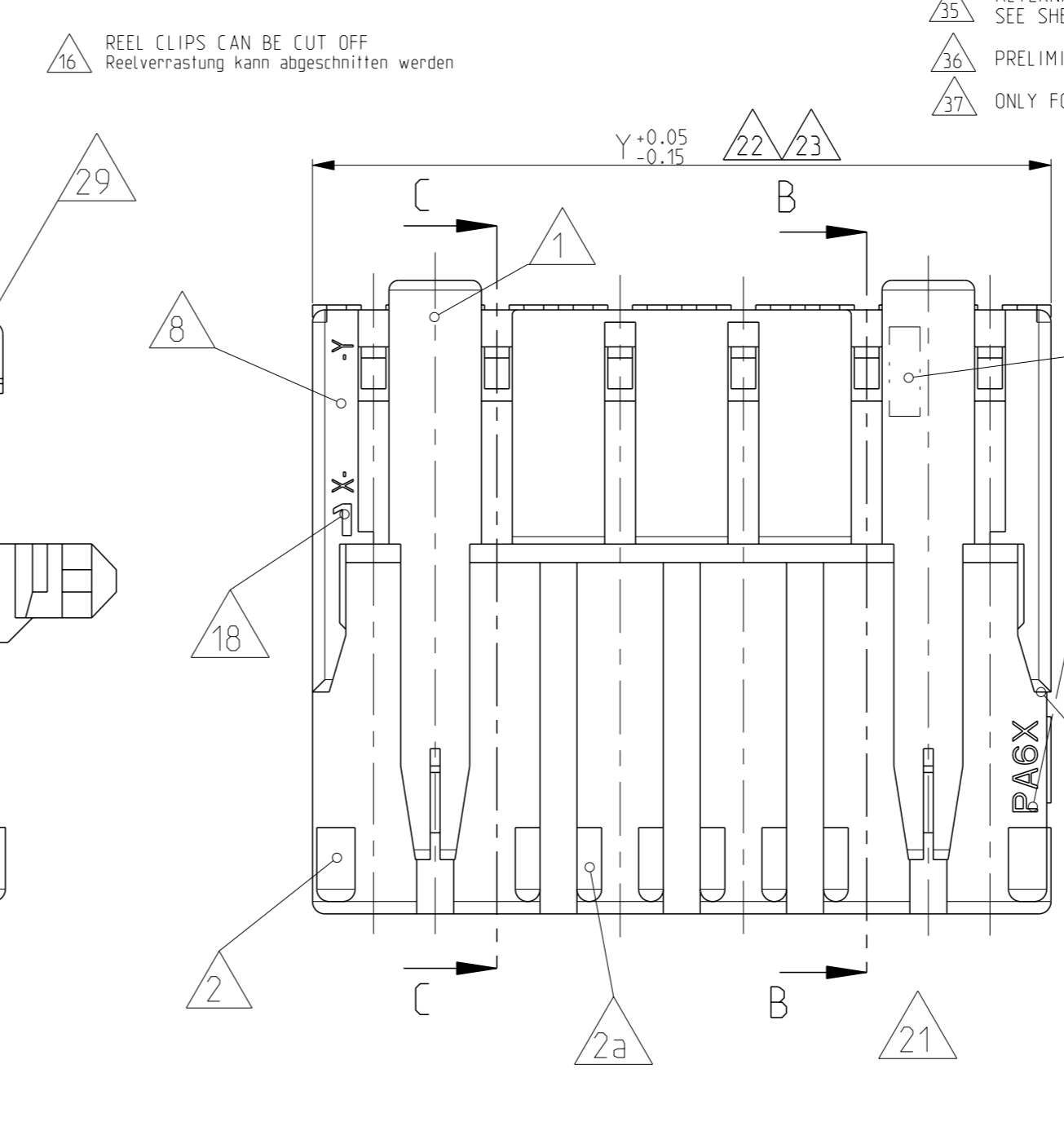
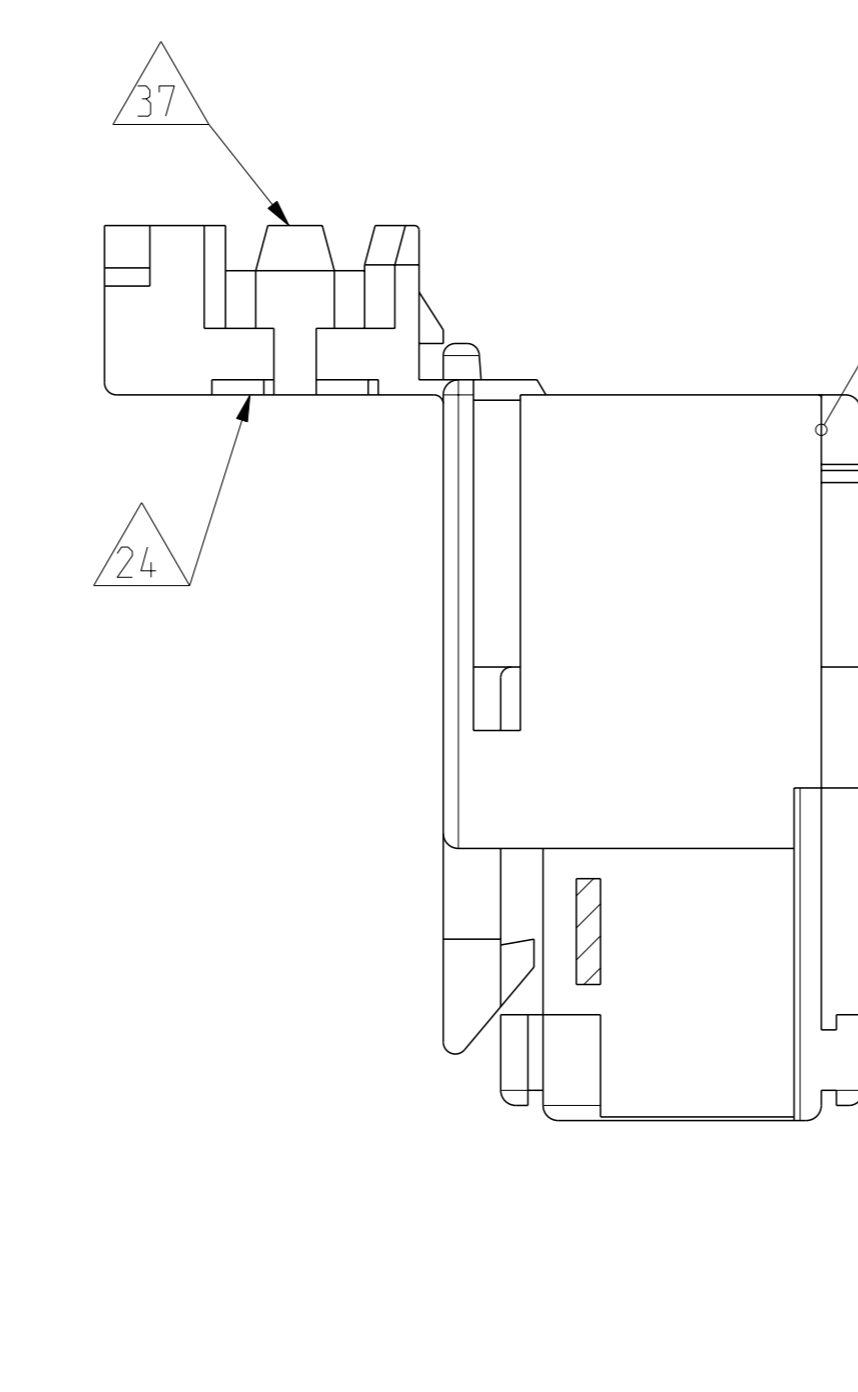
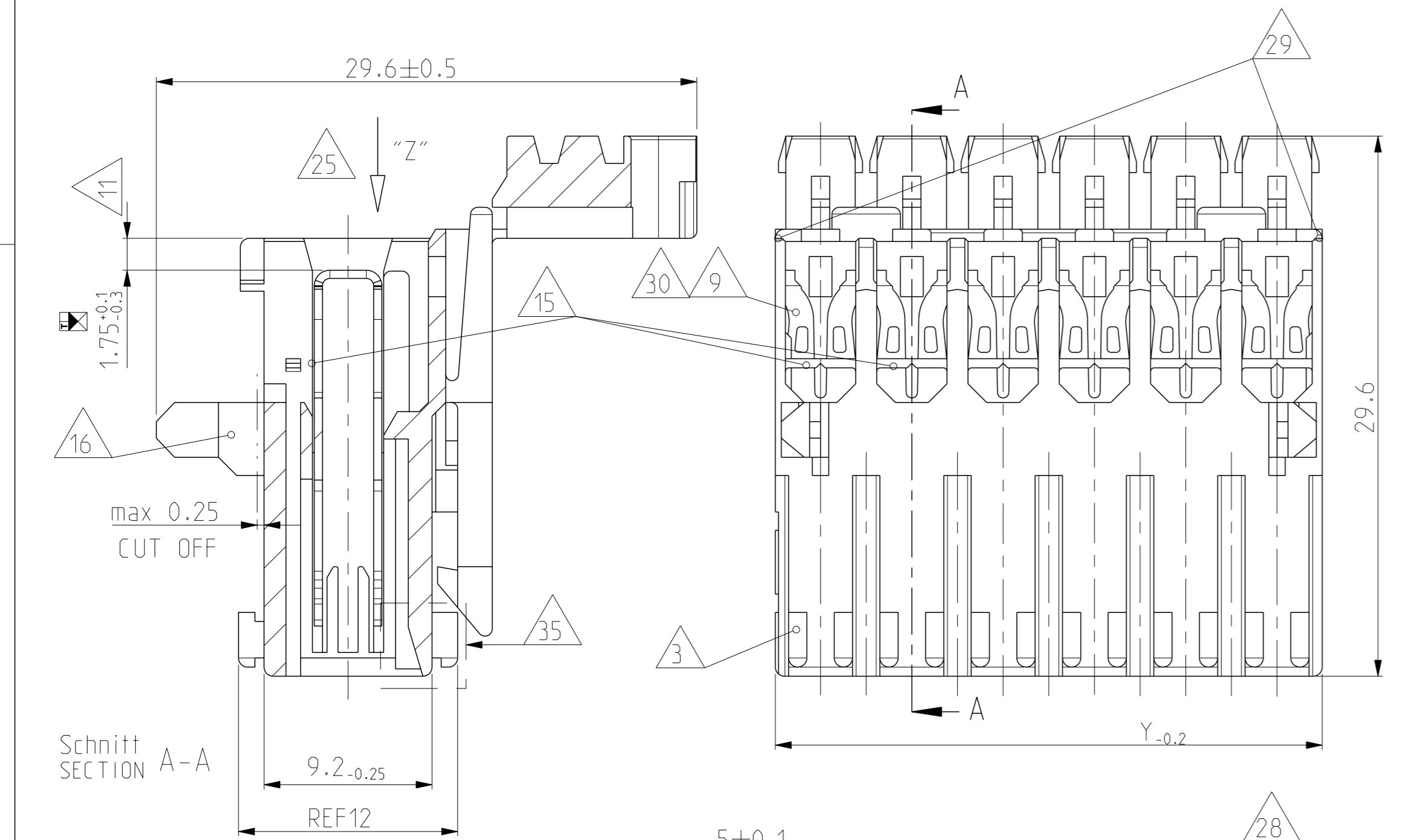


| LOC | DIST | REV | DATE | OWN | APVD |
|-----|------|-----|-------------|-----|------|
| A1 | - | 1 | 06 JUL 2017 | LZ | RR |
| | | 2 | 16 OCT 2017 | KD | RR |
| | | 3 | 13 FEB 2018 | KD | RR |
| | | 4 | 14 JUN 2018 | KD | FL |



- 17 LOCKING DEVICE BETWEEN CAVITY-NO. Verrastung zwischen Kammer-Nr.
- 2 KEYING RIB ON FIRST AND LAST CAVITY Kodierrippen bei erster und letzter Kammer SEE 11
- 2a TYPICAL KEYING RIB Typische Kodierrippen SEE 19
- 3 POLARIZATION RIB (ALL) Polarisierungsrippen (alle) SEE 19
- 4 TE LOGO, MATERIAL DESCRIPTION (PA6) TE LOGO, Materialbezeichnung (PA6)
- 6 CONNECTOR WITH DOUBLE WIRE FOR WIRE RANGE: (ONLY 1) 0.5-0.5, 0.5-0.75. (SEE APPL.SPEC.NO.114-18288) Connector mit Doppelanschlag fuer Litze: (nur 1) 0.5-0.5, 0.5-0.75. (siehe Appl.Spec.Nr.114-18288)
- 6 CONNECTOR WITH SINGLE WIRE FOR WIRE RANGE: 0.35-1.5mm² (SEE APPL.SPEC.NO.114-18288), 0.35-1.0mm² SEE 12 Connector mit Einzelanschlag fuer Litze: 0.35-1.5mm² (siehe Appl.Spec.Nr.114-18288), 0.35-1.0mm² siehe 12
- 7 STRANDED WIRE BENT TO 90° (ONLY FOR SINGLE WIRE POSSIBLE) Litze 90° gebogen (nur bei Einzelanschlag möglich)
- 8 TE NO. (HOUSING PN), PRE- AND SUFFIX ONLY TE Nr. (Gehäuse PN), nur Vor- und Nachstrichzahl
- 9 CAVITY LOADED WITH CONTACT FOR DGB 0.35-1.0mm² (CuZn30 POSTINNEED) Kammer bestückt mit Kontakt fuer DGB 0.35-1.0mm² (CuZn30 postinneed)
- 10 PACKAGING SEE SPEC. 107-18008 Verpackung siehe Verpackungsanweisung 107-18008
- 11 CONTACT POSITION IN CAVITY Kontaktposition in Kammer
- 12 ASS'Y PN, ONLY PRE- AND SUFFIX, ATTENTION: IDENTIFICATION OF THE COMPLETE ASS'Y PN ONLY POSSIBLE WITH PRE-, SUFFIX, MATERIAL AND CHART. THE COMPLETE ASS'Y PN IS VISIBLE ON PACKAGING. Ass'y PN, nur Vor- und Nachstrichzahl. Achtung: Identifizierung der kompletten Ass'y PN nur mit Vor-, Nachstrichzahl, Material und Tabelle möglich. Die komplette Ass'y PN ist auf der Verpackung ersichtl.
- 13 NOTE 2, 2a, 1 IN PROCESS CUT OFF INDIVIDUAL Im Prozess beliebig abschneidbar
- 14 SLOT ACCEPT TAB 6.3x0.8, 4.8x0.8 AT DIN e.g. 46244 Kontaktbereich geeignet fuer Tab 6.3x0.8, 4.8x0.8 nach DIN z.B. 46244
- 15 WIRE SUPPORT Drahtunterstützung
- 16 REEL CLIPS CAN BE CUT OFF Reelverrastung kann abgeschnitten werden

- 17 MATING STOP Tiefenanschlag
- 18 HSG. CAVITY NO.1 Gehäuse Kammer Nr.1
- 19 SPECIAL LOCKING DEVICE ONLY 2POS. HOUSING Besondere Hängengeometrie nur bei 2pol. Gehäuse
- 20 MAX. 4 STRANDED WIRE 1.0mm² IF USING CONTACT Max. 4 Litzen 1.0mm² bei Bestueckung mit Kontakt
- 21 VIEW WITH CLOSED COVER Ansicht mit geschlossenem Deckel gezeichnet
- 22 EXPANSION OF DIMENSION "Y" AFTER TERMINATION BY USING 4 POS. CONNECTORS WITH 1.5mm² STRANDED WIRE AND 8 POS. CONNECTORS WITH 0.75mm² STRANDED WIRE SEE APPL. SPEC. Aufwulmung "Y" nach dem Anschlag bei 4pol. Connectoren mit 1.5mm² Litze und bei 8pol. Connectoren mit 0.75mm² Litze siehe Appl. Spec.
- 23 FOR DOUBLE WIRE SEE APPL. SPEC. Bei Doppelanschlag siehe Appl. Spec.
- 24 AREA FOR COLOUR MARKING POSSIBLE Platz fuer farbige Markierung möglich
- 25 KEYING, VIEW AT DIRECTION "Z" Kodierschema: Ansicht in Richtung "Z"
- 26 LOCKING DEVICE INSIDE OF THE HOUSING (ONLY 1POS. HOUSING) Verrastung innerhalb des Gehäuses (nur bei 1pol. Gehäusen)
- 27 MATERIAL PA6 (GWT 750°C WITHOUT FLAME) Material PA6 (Gluhedrathpruefung 750°C ohne Flamme)
- 28 EXTENSION OF WALL, EXCLUDING 1POS. HOUSING ATTENTION: CHANGES TO BE IMPLEMENTED ON ALL TOOLS (10A AND 16A) Verlängerung der Zwischenwand, betrifft nicht 1pol. Variante. Achtung: Änderung in allen Werkzeugen, direkt und indirekt (10A und 16A)
- 29 EXTERNAL WALLS FOR SNAPPING COVER TO BE REMOVED ON 2POS.- 9POS. HOUSINGS Aeusserer Wand an 2pol. - 9pol. Varianten, um Deckel einzurasten, können entfallen
- 30 CAVITY LOADED WITH CONTACT FOR DGB 0.35-1.0mm² (CuNiSi POSTSILVERED) Kammer bestückt mit Kontakt fuer DGB 0.35-1.0mm² (CuNiSi versilbert)
- 31 ATTENTION! NOTE 2, 2a, 1 ARE CURRENTLY BEING CHANGED IN THE TOOLS Achtung! Note 2, 2a, 1 werden zur Zeit im Werkzeug geändert
- 32 CONNECTION WITH TAB HEADER, SEE PN C97-52824-1000 Verbindung mit Tab-Wanne, siehe PN C97-52824-1000
- 33 ELASTIC DEFORMATION OUTWARDS IS ACCEPTABLE IN THE MARKED AREA (EXCLUDING 1 POS. CONNECTOR). WORKABILITY AND MODULARITY IS GRANTED. Elastische Verformung nach außen ist im markierten Bereich zulässig (ausser 1 pol. Connector). Verarbeitbarkeit bzw. Anreihbarkeit ist nicht gefährdet.
- 34 CONCERNS ONLY 2POS. VERSIONS: CHAMFER AT MIDDLE WALL ADDED) Betrifft nur 2 pol. Variante (Fase an mittlerer Rippe hinzu)
- 35 ALTERNATE GEOMETRY IN HOUSING CAVITY IS PERMITTED FOR ALL VERSIONS UNTIL FURTHER NOTICE. SEE SHEET 2 OF 2
- 36 PRELIMINARY - NOT RELEASED FOR PRODUCTION
- 37 ONLY FOR 1-1534072-2 AND 1-2178271-2. AREA FOR COLOR MARKING POSSIBLE



| POS.-NO. Polzahl | COLOR Farbe | HOUSING-NO. Gehäuse-Nr. | ASSY NO. Assy Nr. | ASSY NO. Assy Nr. | DIM "X" Mass "X" | DIM "Y" Mass "Y" |
|------------------|-------------|-------------------------|-------------------|-------------------|------------------|------------------|
| 10 | Natur | 1-1534071-0 | 1-1534072-0 | - | 45 | 49.95 |
| 9 | Natur | 0-1534071-9 | 0-1534072-9 | - | 40 | 44.95 |
| OBSOLETE | 8 | Natur | 1-1534071-8 | 1-2178271-8 | 35 | 39.95 |
| | Natur | 0-1534071-8 | 0-1534072-8 | - | 35 | 39.95 |
| OBSOLETE | Natur | 2-1534071-7 | 2-1534072-7 | 2-2178271-7 | 30 | 34.95 |
| | Natur | 1-1534071-7 | 1-1534072-7 | 1-2178271-7 | 30 | 34.95 |
| PRELIMINARY | Black | 0-1534071-2 | 1-1534072-2 | 1-2178271-2 | 5 | 9.95 |
| | Natur | 0-1534071-2 | 0-1534072-2 | 0-2178271-2 | 5 | 9.95 |
| 1 | Natur | 0-1534071-1 | 0-1534072-1 | 0-2178271-1 | - | 4.95 |
| 1 | Natur | 0-1534071-1 | 0-1740405-1 | - | - | 4.95 |

THIS DRAWING IS A CONTROLLED DOCUMENT.
 Dieses Zeichnungsstück ist ein Dokument, das kontrolliert wird.
 Änderungen sind nur durch eine autorisierte Person möglich.
 Alle Änderungen sind in der Zeichnung zu vermerken.

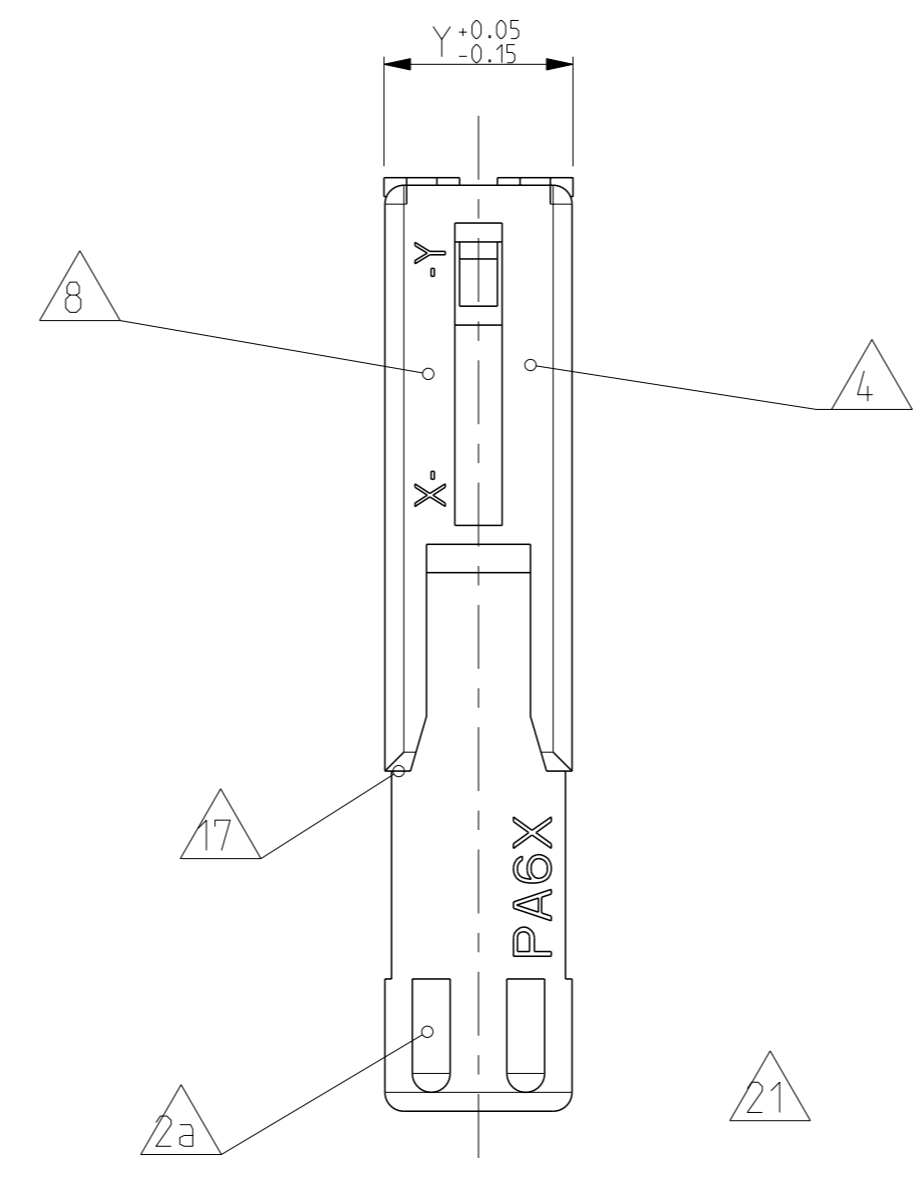
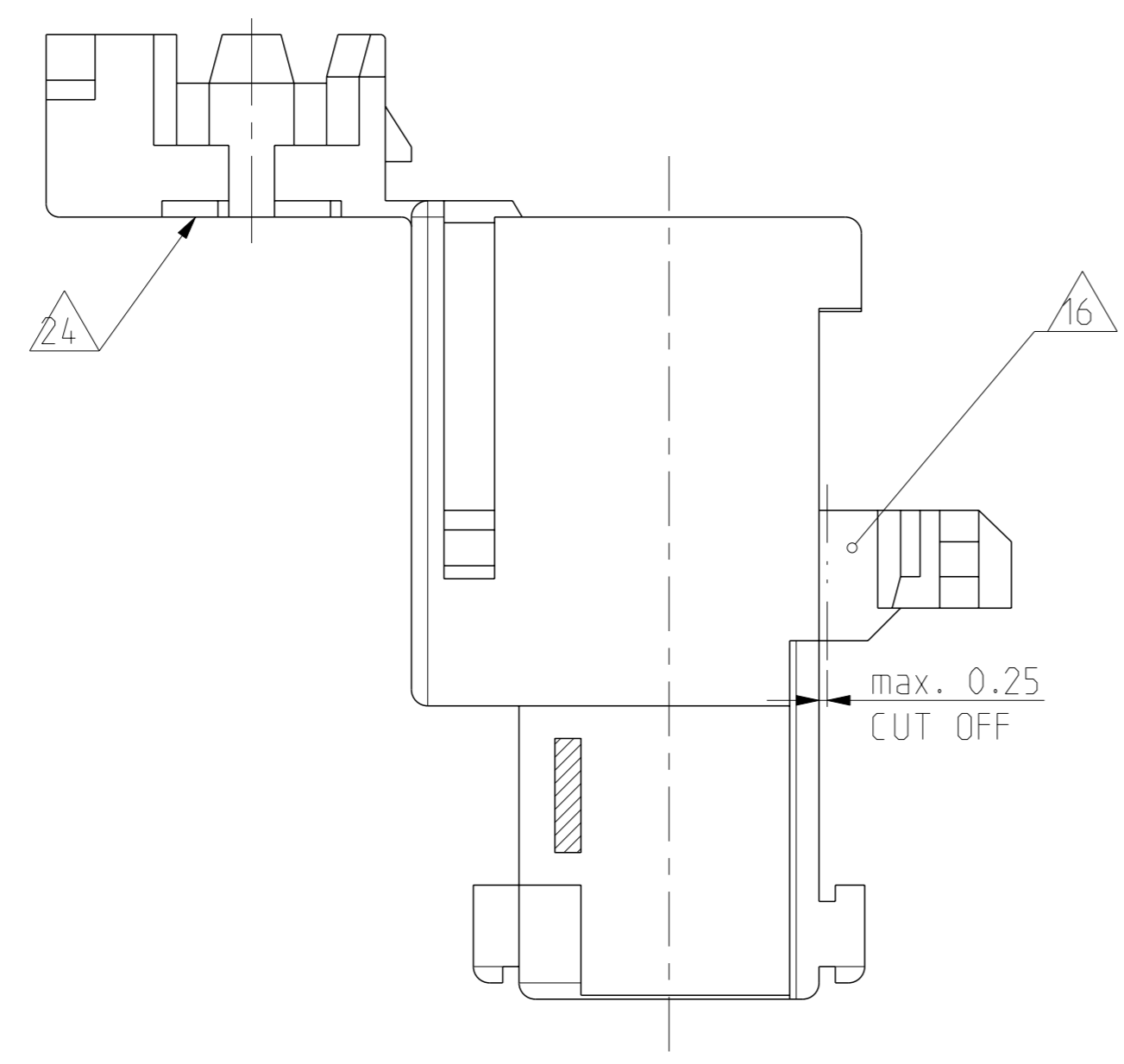
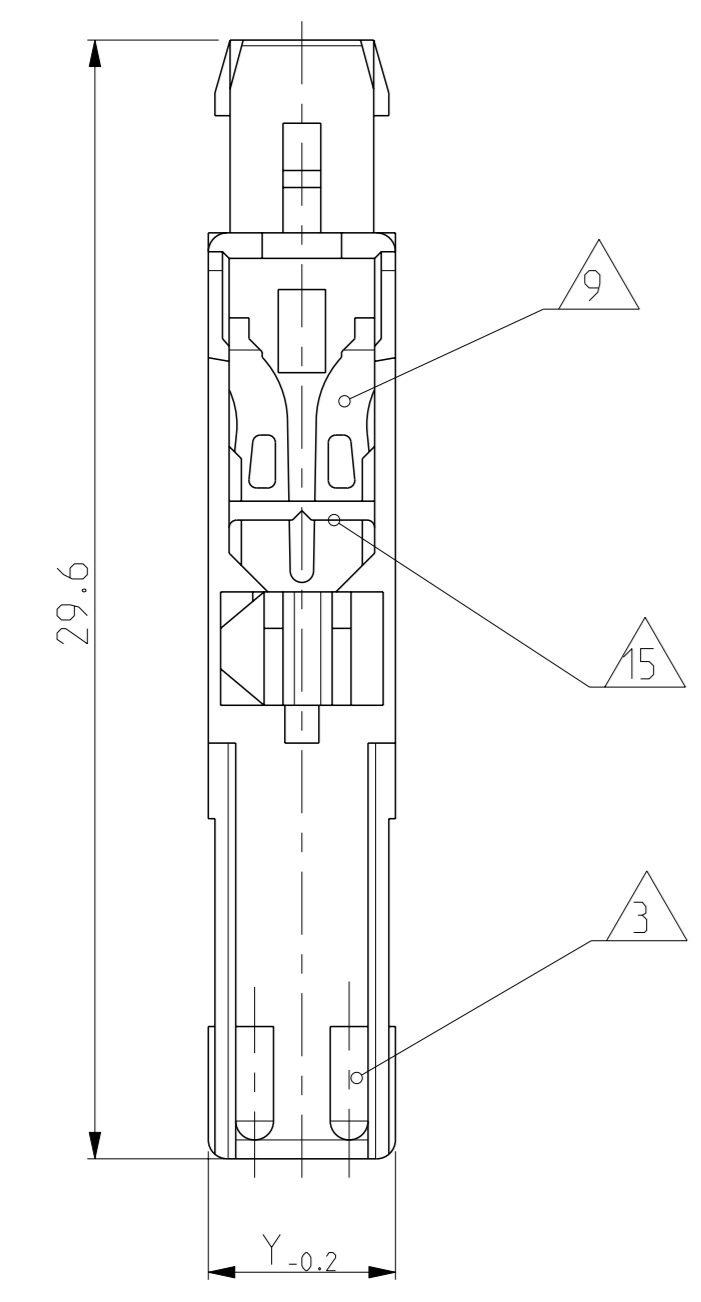
DATE: 06 JUL 2017
 DRAWING NO: 108-18652
 PRODUCT SPEC: 108-18652
 APPLICATION SPEC: 114-18288
 VERIFICATION SPEC: 114-18288

OWNER: M. Ottenloch
 CHK: G. Bartsch
 APVD: In. Klenner

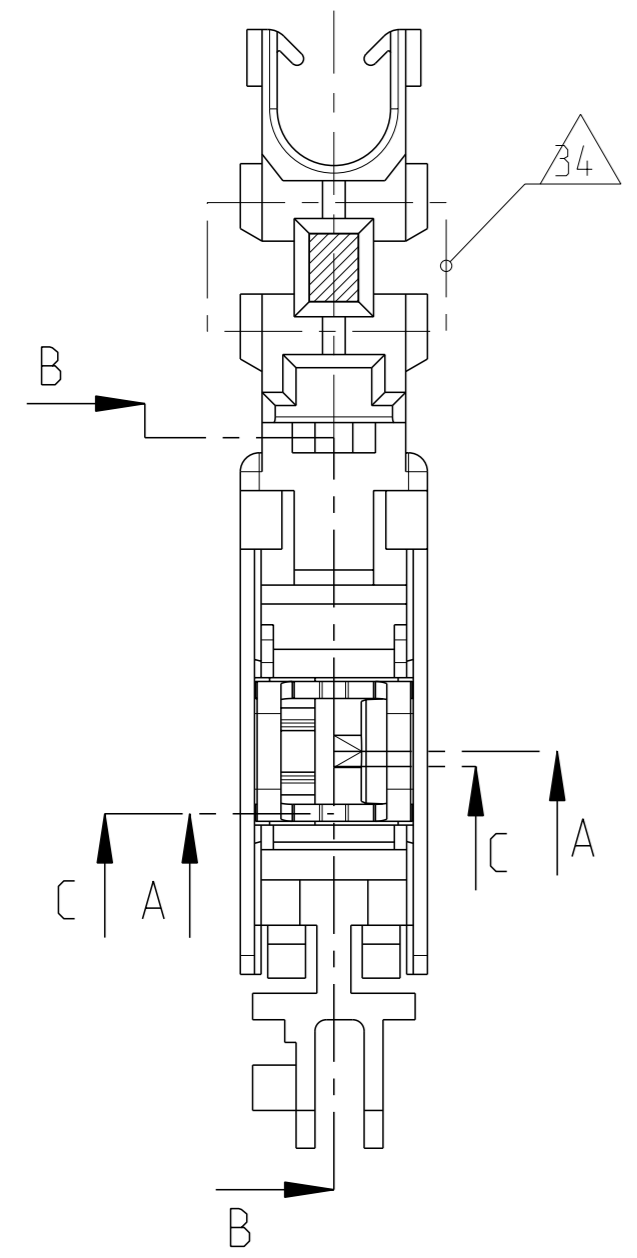
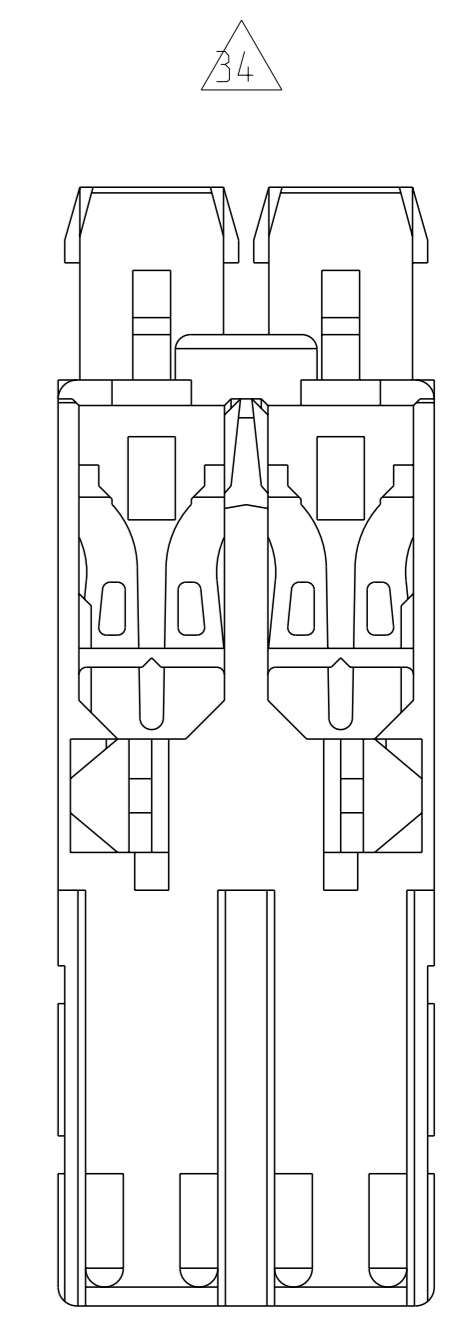
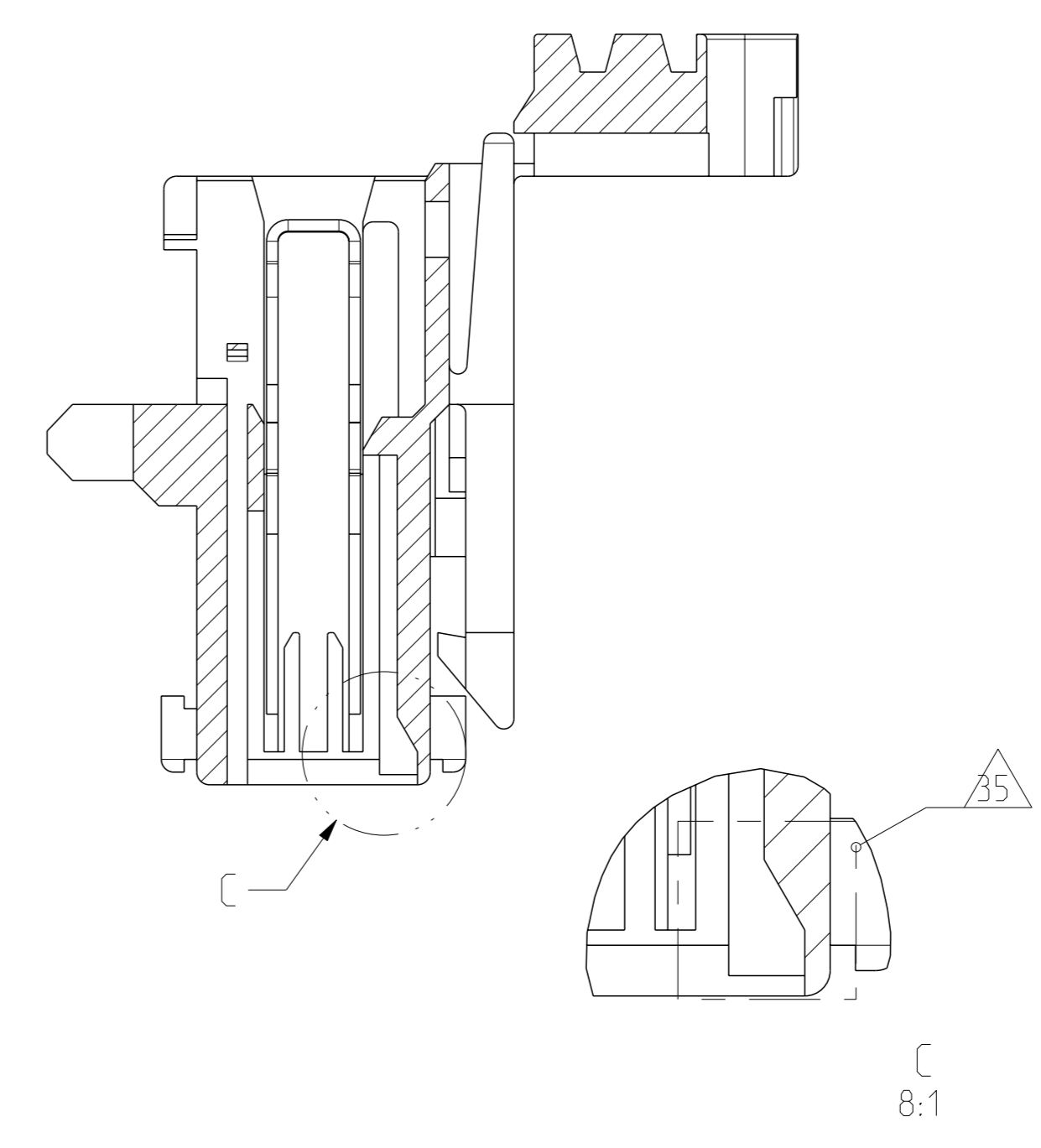
TE Connectivity
TE
 1-10pos. AMP multifitting Mark II
 ASSEMBLY PITCH 5mm
 TAB VERSION

SCALE: 4:1
 SHEET: 1 OF 2
 CUSTOMER DRAWING

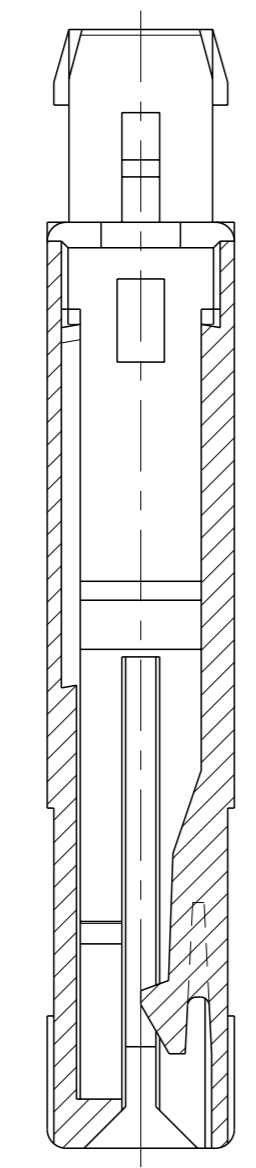
| LOC | DIST | REV | DATE | OWN | APVD |
|--------------|------|-------------|------|-----|------|
| A1 | - | 1 | - | - | - |
| PROJECT NO.: | | SEE SHEET 1 | | | |



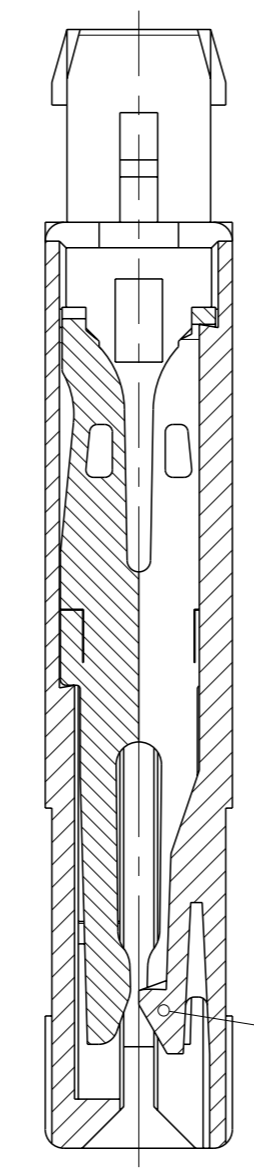
ALTERNATE GEOMETRY IN HOUSING CAVITY $\triangle 35$



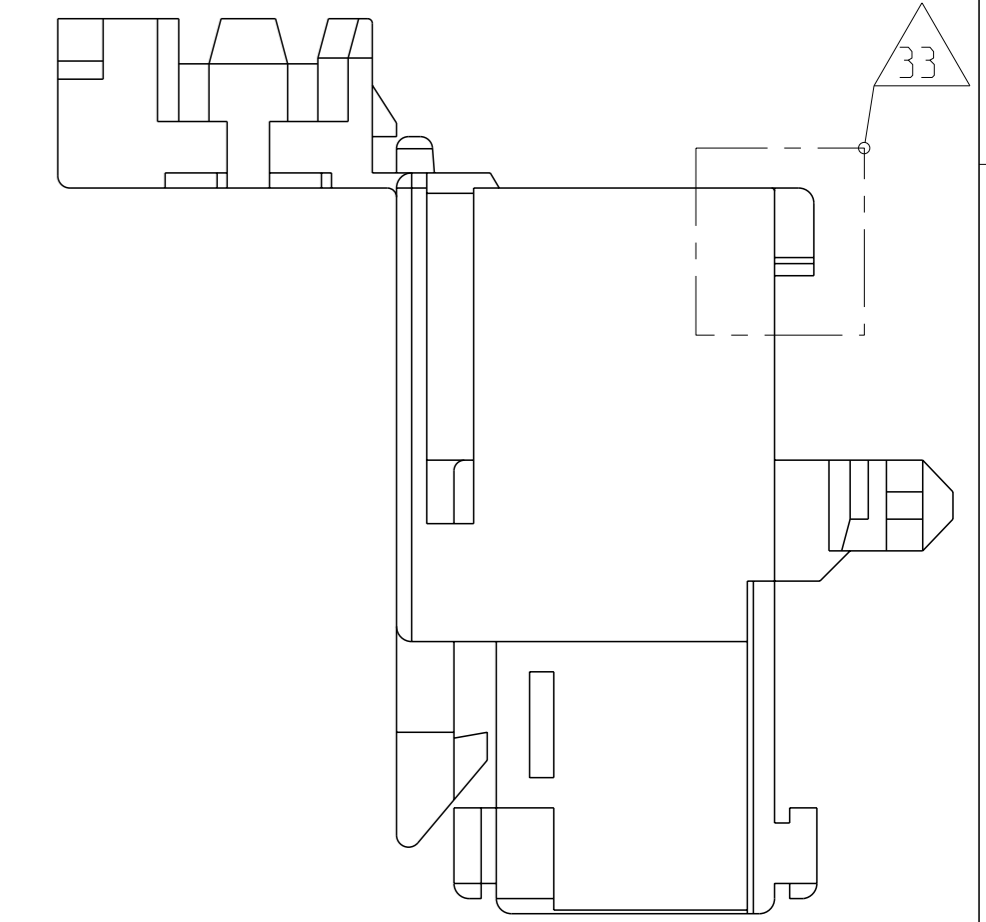
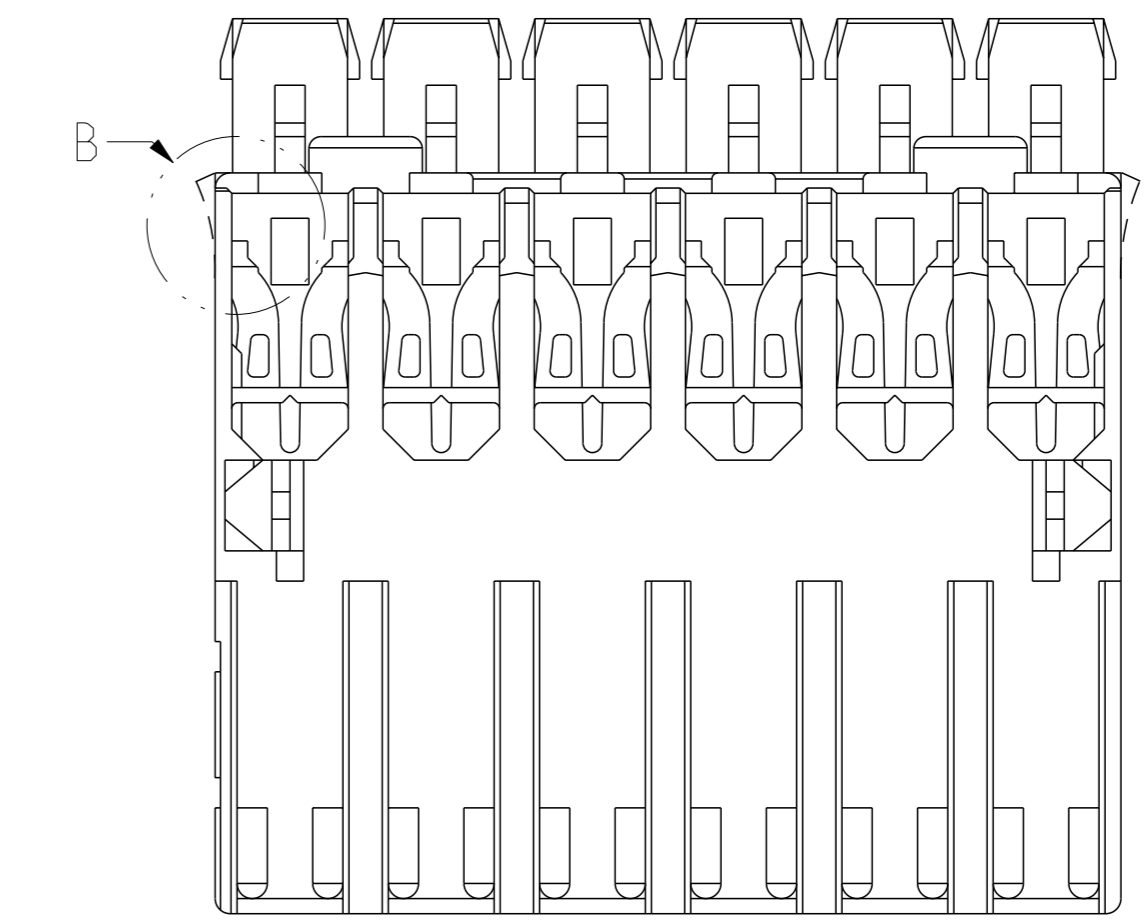
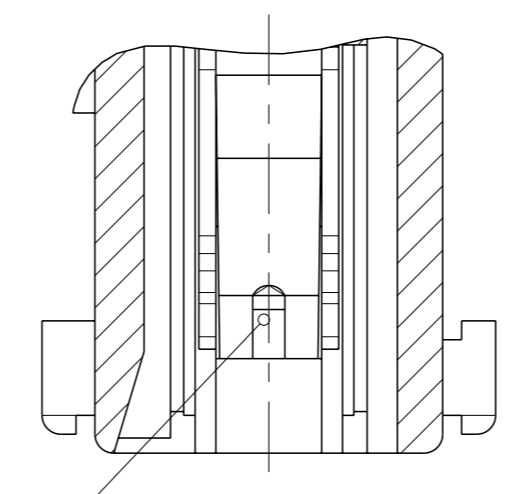
SECTION A-A Schnitt



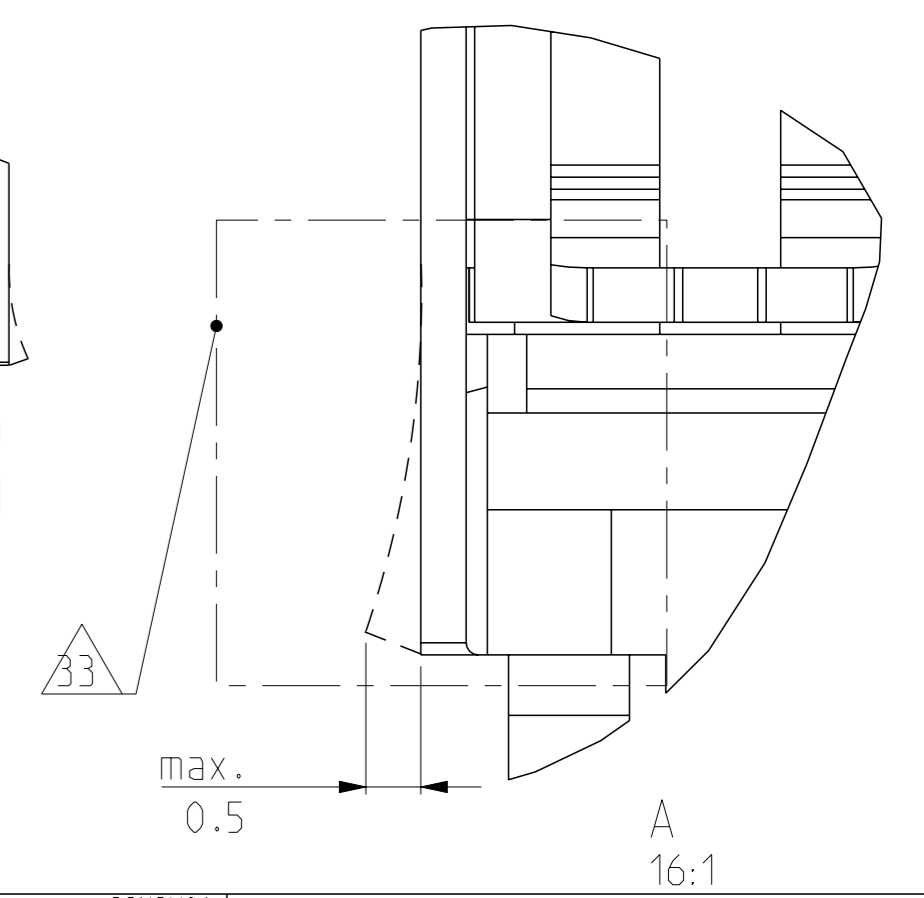
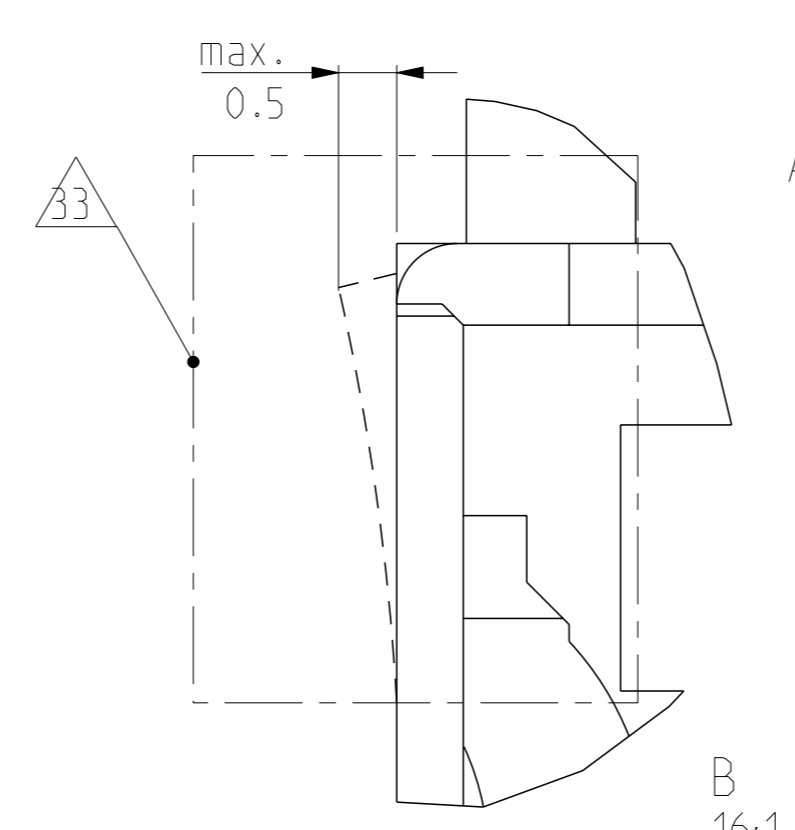
SECTION C-C Schnitt



SECTION B-B Schnitt



NOTES & TABLES, SEE SHEET 1
Notizen & Tabellen, siehe Blatt 1



| | | | | |
|---|--|-------------------|---------|--|
| THIS DRAWING IS A CONTROLLED DOCUMENT. DIESES ZEICHNUNGSSTÜCK WIRD DURCH AWP KONTROLLIERT. ANSCHLIESSENDE VERÄNDERUNGEN SIND UNTERSCHRIEBEN. SEE REVISED DRAWING FOR ANY CHANGES. | | OWN: M. Ottenloch | ZBNOV01 | TE Connectivity |
| DIMENSIONS: MASSENHEITEN: mm | | CHK: G. Bartosch | ZBNOV01 | |
| TOLERANCES UNLESS OTHERWISE SPECIFIED: ALLE DIMENSIONEN | | APVD: In. Klenner | ZBNOV01 | NAME: 1-10pos. AMP multifitting Mark II ASSEMBLY PITCH 5mm TAB VERSION |
| 0 PLC ±0.2 | | PRODUCT SPEC | | SIZE: A1 |
| 1 PLC ± | | PRODUCT SPEC | | CAGE CODE: 00779 |
| 2 PLC ± | | PRODUCT SPEC | | DRAWING NO: 1534072 |
| 3 PLC ± | | PRODUCT SPEC | | REVISIONS: 1 |
| 4 PLC ± | | PRODUCT SPEC | | DATE: - |
| 5 PLC ± | | PRODUCT SPEC | | OWN: - |
| 6 PLC ± | | PRODUCT SPEC | | APVD: - |
| 7 PLC ± | | PRODUCT SPEC | | SCALE: 4:1 |
| 8 PLC ± | | PRODUCT SPEC | | SHEET: 2 |
| 9 PLC ± | | PRODUCT SPEC | | OF: 2 |
| 10 PLC ± | | PRODUCT SPEC | | VON: 2 |
| 11 PLC ± | | PRODUCT SPEC | | REVISION: K16 |
| 12 PLC ± | | PRODUCT SPEC | | |
| 13 PLC ± | | PRODUCT SPEC | | |
| 14 PLC ± | | PRODUCT SPEC | | |
| 15 PLC ± | | PRODUCT SPEC | | |
| 16 PLC ± | | PRODUCT SPEC | | |
| 17 PLC ± | | PRODUCT SPEC | | |
| 18 PLC ± | | PRODUCT SPEC | | |
| 19 PLC ± | | PRODUCT SPEC | | |
| 20 PLC ± | | PRODUCT SPEC | | |
| 21 PLC ± | | PRODUCT SPEC | | |
| 22 PLC ± | | PRODUCT SPEC | | |
| 23 PLC ± | | PRODUCT SPEC | | |
| 24 PLC ± | | PRODUCT SPEC | | |
| 25 PLC ± | | PRODUCT SPEC | | |
| 26 PLC ± | | PRODUCT SPEC | | |
| 27 PLC ± | | PRODUCT SPEC | | |
| 28 PLC ± | | PRODUCT SPEC | | |
| 29 PLC ± | | PRODUCT SPEC | | |
| 30 PLC ± | | PRODUCT SPEC | | |
| 31 PLC ± | | PRODUCT SPEC | | |
| 32 PLC ± | | PRODUCT SPEC | | |
| 33 PLC ± | | PRODUCT SPEC | | |
| 34 PLC ± | | PRODUCT SPEC | | |
| 35 PLC ± | | PRODUCT SPEC | | |
| 36 PLC ± | | PRODUCT SPEC | | |
| 37 PLC ± | | PRODUCT SPEC | | |
| 38 PLC ± | | PRODUCT SPEC | | |
| 39 PLC ± | | PRODUCT SPEC | | |
| 40 PLC ± | | PRODUCT SPEC | | |
| 41 PLC ± | | PRODUCT SPEC | | |
| 42 PLC ± | | PRODUCT SPEC | | |
| 43 PLC ± | | PRODUCT SPEC | | |
| 44 PLC ± | | PRODUCT SPEC | | |
| 45 PLC ± | | PRODUCT SPEC | | |
| 46 PLC ± | | PRODUCT SPEC | | |
| 47 PLC ± | | PRODUCT SPEC | | |
| 48 PLC ± | | PRODUCT SPEC | | |
| 49 PLC ± | | PRODUCT SPEC | | |
| 50 PLC ± | | PRODUCT SPEC | | |
| 51 PLC ± | | PRODUCT SPEC | | |
| 52 PLC ± | | PRODUCT SPEC | | |
| 53 PLC ± | | PRODUCT SPEC | | |
| 54 PLC ± | | PRODUCT SPEC | | |
| 55 PLC ± | | PRODUCT SPEC | | |
| 56 PLC ± | | PRODUCT SPEC | | |
| 57 PLC ± | | PRODUCT SPEC | | |
| 58 PLC ± | | PRODUCT SPEC | | |
| 59 PLC ± | | PRODUCT SPEC | | |
| 60 PLC ± | | PRODUCT SPEC | | |
| 61 PLC ± | | PRODUCT SPEC | | |
| 62 PLC ± | | PRODUCT SPEC | | |
| 63 PLC ± | | PRODUCT SPEC | | |
| 64 PLC ± | | PRODUCT SPEC | | |
| 65 PLC ± | | PRODUCT SPEC | | |
| 66 PLC ± | | PRODUCT SPEC | | |
| 67 PLC ± | | PRODUCT SPEC | | |
| 68 PLC ± | | PRODUCT SPEC | | |
| 69 PLC ± | | PRODUCT SPEC | | |
| 70 PLC ± | | PRODUCT SPEC | | |
| 71 PLC ± | | PRODUCT SPEC | | |
| 72 PLC ± | | PRODUCT SPEC | | |
| 73 PLC ± | | PRODUCT SPEC | | |
| 74 PLC ± | | PRODUCT SPEC | | |
| 75 PLC ± | | PRODUCT SPEC | | |
| 76 PLC ± | | PRODUCT SPEC | | |
| 77 PLC ± | | PRODUCT SPEC | | |
| 78 PLC ± | | PRODUCT SPEC | | |
| 79 PLC ± | | PRODUCT SPEC | | |
| 80 PLC ± | | PRODUCT SPEC | | |
| 81 PLC ± | | PRODUCT SPEC | | |
| 82 PLC ± | | PRODUCT SPEC | | |
| 83 PLC ± | | PRODUCT SPEC | | |
| 84 PLC ± | | PRODUCT SPEC | | |
| 85 PLC ± | | PRODUCT SPEC | | |
| 86 PLC ± | | PRODUCT SPEC | | |
| 87 PLC ± | | PRODUCT SPEC | | |
| 88 PLC ± | | PRODUCT SPEC | | |
| 89 PLC ± | | PRODUCT SPEC | | |
| 90 PLC ± | | PRODUCT SPEC | | |
| 91 PLC ± | | PRODUCT SPEC | | |
| 92 PLC ± | | PRODUCT SPEC | | |
| 93 PLC ± | | PRODUCT SPEC | | |
| 94 PLC ± | | PRODUCT SPEC | | |
| 95 PLC ± | | PRODUCT SPEC | | |
| 96 PLC ± | | PRODUCT SPEC | | |
| 97 PLC ± | | PRODUCT SPEC | | |
| 98 PLC ± | | PRODUCT SPEC | | |
| 99 PLC ± | | PRODUCT SPEC | | |
| 100 PLC ± | | PRODUCT SPEC | | |



Компания «ЭлектроПласт» предлагает заключение долгосрочных отношений при поставках импортных электронных компонентов на взаимовыгодных условиях!

Наши преимущества:

- Оперативные поставки широкого спектра электронных компонентов отечественного и импортного производства напрямую от производителей и с крупнейших мировых складов;
- Поставка более 17-ти миллионов наименований электронных компонентов;
- Поставка сложных, дефицитных, либо снятых с производства позиций;
- Оперативные сроки поставки под заказ (от 5 рабочих дней);
- Экспресс доставка в любую точку России;
- Техническая поддержка проекта, помощь в подборе аналогов, поставка прототипов;
- Система менеджмента качества сертифицирована по Международному стандарту ISO 9001;
- Лицензия ФСБ на осуществление работ с использованием сведений, составляющих государственную тайну;
- Поставка специализированных компонентов (Xilinx, Altera, Analog Devices, Intersil, Interpoint, Microsemi, Aeroflex, Peregrine, Syfer, Eurofarad, Texas Instrument, Miteq, Cobham, E2V, MA-COM, Hittite, Mini-Circuits, General Dynamics и др.);

Помимо этого, одним из направлений компании «ЭлектроПласт» является направление «Источники питания». Мы предлагаем Вам помощь Конструкторского отдела:

- Подбор оптимального решения, техническое обоснование при выборе компонента;
- Подбор аналогов;
- Консультации по применению компонента;
- Поставка образцов и прототипов;
- Техническая поддержка проекта;
- Защита от снятия компонента с производства.



Как с нами связаться

Телефон: 8 (812) 309 58 32 (многоканальный)

Факс: 8 (812) 320-02-42

Электронная почта: org@eplast1.ru

Адрес: 198099, г. Санкт-Петербург, ул. Калинина, дом 2, корпус 4, литера А.