

Type 17P Series

Key Features

- Polymer thick film element
- Switch versions available
- Dual gang version available
- High reliability
- Small versatile size
- All plastic body
- Plastic spindle
- Flame retardant

Applications

- Audio
- Industrial controls
- Lighting
- Appliances



Specify the type 17P for applications where high insulation resistance and voltage proof are key requirements. The materials used in the all plastic body and spindle construction are UL approved making it a suitable component for domestic appliances and control systems where safety is of prime importance. This popular low cost potentiometer is suitable for industrial and professional applications. A range of approved switches can be added to the rear of the potentiometer, to produce rotary or push-push action mains switches.

Characteristics - Electrical

| | |
|-----------------------------------|--|
| Resistance Range: | 1K to 1M (linear), 4K7 to 470K (non linear) |
| Resistance Value: | 1, 2.2 and 4.7 in each decade |
| Resistance Tolerance: | ± 20% (10% by selection) |
| Rated Dissipation at 20°C: | 0.25W (linear), 0.125W (non linear) |
| Limiting Element Voltage: | 350V DC or AC (rms) |
| Electrical Rotation: | 267° without switch, 232° with switch |
| Terminal Resistance: | 5Ω, maximum |
| Noise (ENR): | 2% maximum (linear), 3% maximum (non linear) |
| Insulation Resistance: | 4GΩ, minimum |
| Voltage Proof: | 1kV AC peak |

Characteristics - Environmental

| | |
|---|---|
| Limits of Resistance Change: | 15% (after 1000hrs. endurance) |
| Temperature Characteristics of Resistance: | 5% (20°C to 70°C) |
| Bump Severity: | 390m/s ² , 4000 bumps |
| Vibration Severity: | 10 - 500Hz, 0.75 mm or 98M/s ² |
| Climatic Category: | 25/70/04 |
| Mechanical Endurance: | 20000 operations (minimum) |

Characteristics - Mechanical

| | |
|-----------------------------|----------------|
| Operating Torque: | 15mNm maximum |
| Mechanical Rotation: | 300° nominal |
| End Stop Torque: | 350mNm maximum |

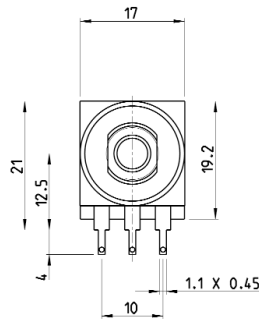
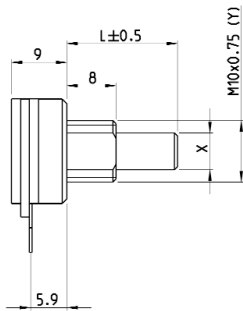
Characteristics - Switch

| | B & D | A & E | P |
|------------------------------------|---------------------------------|------------------------------|------------------------------|
| Switch Type: | 1A | 4A | 10A |
| Current/Voltage Rating: | 1.0A - 24V DC 0.3A - 250V AC | 10A - 12V DC 4A - 250V AC | 10A - 250V AC |
| On/Off Torque: | 40mNm maximum | 40mNm maximum | Life - 25,000 cycles minimum |
| Initial Contact Resistance: | 20mΩ | 20mΩ | Proof Voltage - 3kV minimum |
| Contact Gap: | 3mm | 3mm | |

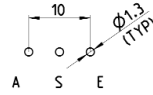
Type 17P Series

Dimensions

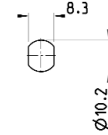
Single Potentiometer



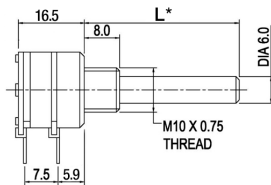
PCB Layout



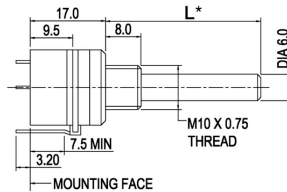
Bush Mounting Panel Cutout



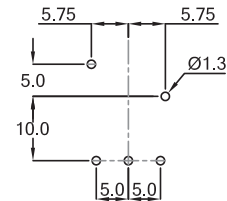
Dual Potentiometer



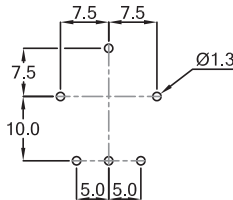
Single Switched Potentiometer



Rotary Switch PCB Layout



Push-Push Switch PCB Layout

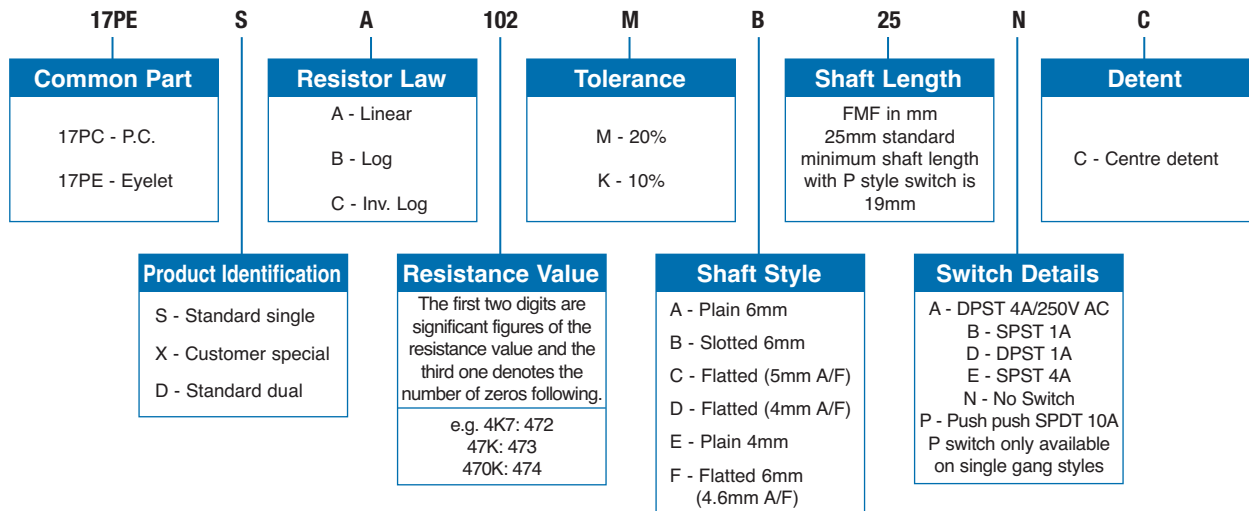


Dual Potentiometer PCB Layout



L* - Standard shaft length 35mm
All dimensions given from component side

How to Order



TE Connectivity, TE connectivity (logo) and TE (logo) are trademarks.

Other logos, product and Company names mentioned herein may be trademarks of their respective owners.

While TE has made every reasonable effort to ensure the accuracy of the information in this datasheet, TE does not guarantee that it is error-free, nor does TE make any other representation, warranty or guarantee that the information is accurate, correct, reliable or current. TE reserves the right to make any adjustments to the information contained herein at any time without notice. TE expressly disclaims all implied warranties regarding the information contained herein, including, but not limited to, any implied warranties of merchantability or fitness for a particular purpose. The dimensions in this datasheet are for reference purposes only and are subject to change without notice. Specifications are subject to change without notice. Consult TE for the latest dimensions and design specifications.



Компания «ЭлектроПласт» предлагает заключение долгосрочных отношений при поставках импортных электронных компонентов на взаимовыгодных условиях!

Наши преимущества:

- Оперативные поставки широкого спектра электронных компонентов отечественного и импортного производства напрямую от производителей и с крупнейших мировых складов;
- Поставка более 17-ти миллионов наименований электронных компонентов;
- Поставка сложных, дефицитных, либо снятых с производства позиций;
- Оперативные сроки поставки под заказ (от 5 рабочих дней);
- Экспресс доставка в любую точку России;
- Техническая поддержка проекта, помощь в подборе аналогов, поставка прототипов;
- Система менеджмента качества сертифицирована по Международному стандарту ISO 9001;
- Лицензия ФСБ на осуществление работ с использованием сведений, составляющих государственную тайну;
- Поставка специализированных компонентов (Xilinx, Altera, Analog Devices, Intersil, Interpoint, Microsemi, Aeroflex, Peregrine, Syfer, Eurofarad, Texas Instrument, Miteq, Cobham, E2V, MA-COM, Hittite, Mini-Circuits, General Dynamics и др.);

Помимо этого, одним из направлений компании «ЭлектроПласт» является направление «Источники питания». Мы предлагаем Вам помощь Конструкторского отдела:

- Подбор оптимального решения, техническое обоснование при выборе компонента;
- Подбор аналогов;
- Консультации по применению компонента;
- Поставка образцов и прототипов;
- Техническая поддержка проекта;
- Защита от снятия компонента с производства.



Как с нами связаться

Телефон: 8 (812) 309 58 32 (многоканальный)

Факс: 8 (812) 320-02-42

Электронная почта: org@eplast1.ru

Адрес: 198099, г. Санкт-Петербург, ул. Калинина, дом 2, корпус 4, литера А.