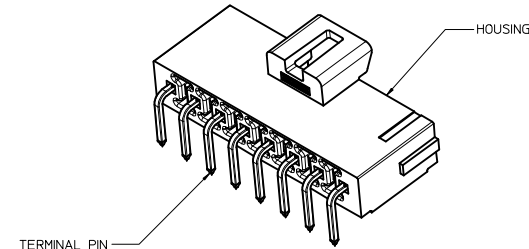
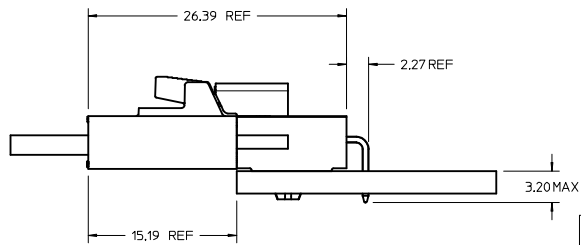
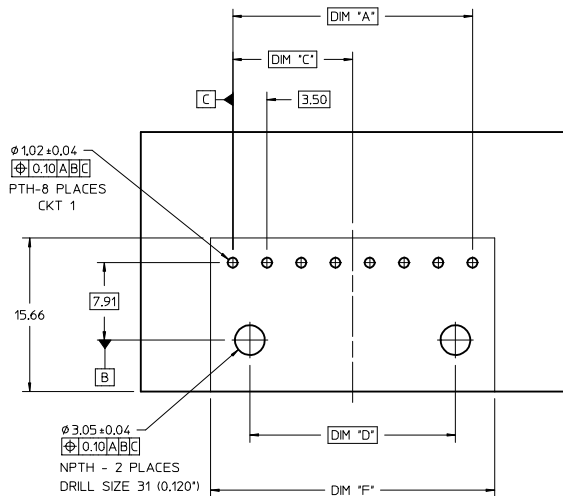


NOTES:

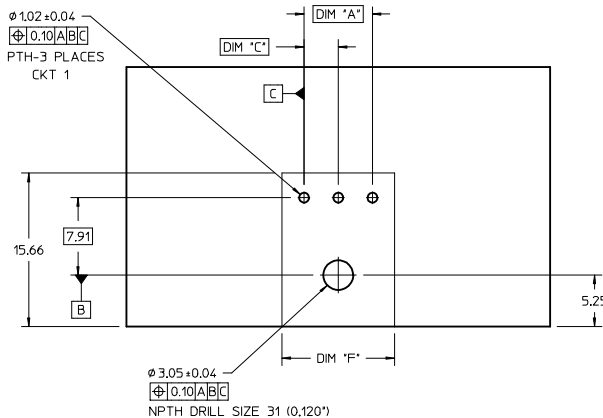
- MATERIAL :
HOUSING
OPTION 1: LCP E130i BLACK
OPTION 2: LCP E130i NATURAL
TERMINAL: COPPER ALLOY
- PLATING FINISH:
OPTION 1 - 1.5µm(60µin)-2.5µm(100µin) TIN OVER
1.25µm(50µin)-2.5µm(100µin) NICKEL OVERALL
OPTION 2 - 0.35µm(15µin) GOLD CONTACT AREA,
1.5µm(60µin)-2.5µm(100µin) TIN TAIL AREA OVER
1.25µm(50µin)-2.5µm(100µin) NICKEL OVERALL
OPTION 3 - 0.70µm(30µin) GOLD CONTACT AREA,
1.5µm(60µin)-2.5µm(100µin) TIN TAIL AREA OVER
1.25µm(50µin)-2.5µm(100µin) NICKEL OVERALL
- PARTS TO BE PACKAGED PER PK-172310-9001
- PRODUCT SPECIFICATION PS-172323-0001
- PART MATES WITH MOLEX RECEPTACLE HOUSING 172256 AND 172260
- PART CONFORMS TO CLASS "C" REQUIREMENTS OF SPECIFICATION PS-45499-002 WITH 0.13 MM MAXIMUM FLASH ALLOWED IN CORE HOLES AND FRONT SURFACE.
- DISCOLORATION IN THE BANDOLIER AREA OF THE PIN IS INHERENT TO THE PLATING PROCESS AND IS DUE TO THE MASKING EFFECT OF THE CARRIER. THIS DISCOLORATION IS IN A NON-FUNCTIONAL AREA OF THE PIN AND WILL NOT AFFECT THE PERFORMANCE OF THE HEADER ASSEMBLY.
- ASSEMBLY SPECIFICATION: AS-172323-0001



| | | | | | | |
|---|--|---------------------------------------|-------------------|----------------|--------------|---|
| X RELEASE IEC NO: LCP2015-4103 DRAWN: DROSCA CHYK: APPR: RHODGE 2015/04/13 2015/04/15 | QUALITY SYMBOLS | GENERAL TOLERANCES (UNLESS SPECIFIED) | DIMENSION STYLE | SCALE | DESIGN UNITS | THIRD ANGLE PROJECTION |
| | ▽=0 | mm INCH | MM ONLY | 4:1 | METRIC | ☉ |
| | ▽=0 | 4 PLACES ± --- ± --- | DRAWN BY DATE | | | TITLE |
| | ▽=0 | 3 PLACES ± --- ± --- | DROSCA 2014/03/05 | | | ULTRA-FIT R/A HEADER 2-8 CKTS SINGLE ROW |
| | 2 PLACES ± 0.25 ± --- | CHECKED BY DATE | | | | |
| | 1 PLACE ± 0.50 ± --- | APPROVED BY DATE | | | | |
| | 0 PLACE ± --- ± --- | JCOMERCI 2014/04/24 | | | | |
| | ANGULAR ±1/2° | MATERIAL NO. | SEE CHART | DOCUMENT NO. | | |
| | DRAFT WHERE APPLICABLE MUST REMAIN WITHIN DIMENSIONS | SIZE | D | SD-172310-1000 | | |
| | | | | | | SHEET NO. 1 OF 3 |



PCB LAYOUT 4,5,6,7 AND 8 COMPONENT SIDE
RECOMMENDED PCB THICKNESS 1.60MM-2.40MM

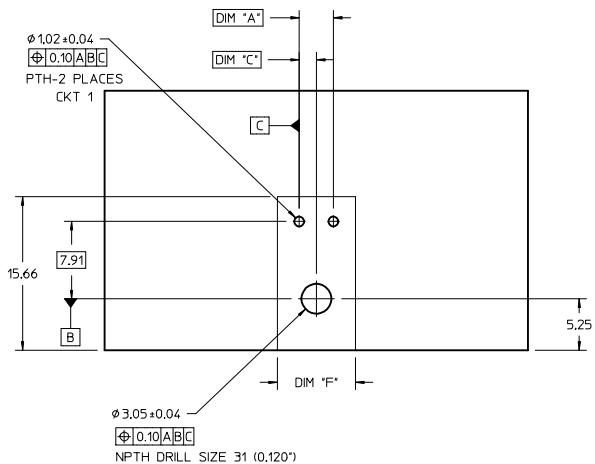


PCB LAYOUT 3 CIRCUIT COMPONENT SIDE
RECOMMENDED PCB THICKNESS 1.60MM-2.40MM

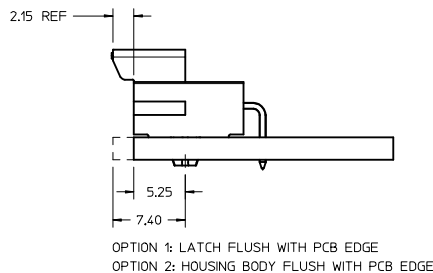
| TIN PLATING | | | | | | | |
|-------------|---------|--------------|------------|-------|-------|-------|-------|
| PART NO. | COLOR | CIRCUIT SIZE | KEY OPTION | DIM A | DIM F | DIM C | DIM D |
| 172310-1102 | BLACK | 2 | KEY A | 3.50 | 8.00 | 1.75 | 0.00 |
| 172310-1103 | BLACK | 3 | KEY A | 7.00 | 11.50 | 3.50 | 0.00 |
| 172310-1104 | BLACK | 4 | KEY A | 10.50 | 15.00 | 5.25 | 7.00 |
| 172310-1105 | BLACK | 5 | KEY A | 14.00 | 18.50 | 7.00 | 10.50 |
| 172310-1106 | BLACK | 6 | KEY A | 17.50 | 22.00 | 8.75 | 14.00 |
| 172310-1107 | BLACK | 7 | KEY A | 21.00 | 25.50 | 10.50 | 17.50 |
| 172310-1108 | BLACK | 8 | KEY A | 24.50 | 29.00 | 12.25 | 21.00 |
| 172310-2102 | NATURAL | 2 | KEY B | 3.50 | 8.00 | 1.75 | 0.00 |
| 172310-2103 | NATURAL | 3 | KEY B | 7.00 | 11.50 | 3.50 | 0.00 |
| 172310-2104 | NATURAL | 4 | KEY B | 10.50 | 15.00 | 5.25 | 7.00 |
| 172310-2105 | NATURAL | 5 | KEY B | 14.00 | 18.50 | 7.00 | 10.50 |
| 172310-2106 | NATURAL | 6 | KEY B | 17.50 | 22.00 | 8.75 | 14.00 |
| 172310-2107 | NATURAL | 7 | KEY B | 21.00 | 25.50 | 10.50 | 17.50 |
| 172310-2108 | NATURAL | 8 | KEY B | 24.50 | 29.00 | 12.25 | 21.00 |

| 15 MICROINCH GOLD PLATING | | | | | | | |
|---------------------------|---------|--------------|------------|-------|-------|-------|-------|
| PART NO. | COLOR | CIRCUIT SIZE | KEY OPTION | DIM A | DIM F | DIM C | DIM D |
| 172310-1202 | BLACK | 2 | KEY A | 3.50 | 8.00 | 1.75 | 0.00 |
| 172310-1203 | BLACK | 3 | KEY A | 7.00 | 11.50 | 3.50 | 0.00 |
| 172310-1204 | BLACK | 4 | KEY A | 10.50 | 15.00 | 5.25 | 7.00 |
| 172310-1205 | BLACK | 5 | KEY A | 14.00 | 18.50 | 7.00 | 10.50 |
| 172310-1206 | BLACK | 6 | KEY A | 17.50 | 22.00 | 8.75 | 14.00 |
| 172310-1207 | BLACK | 7 | KEY A | 21.00 | 25.50 | 10.50 | 17.50 |
| 172310-1208 | BLACK | 8 | KEY A | 24.50 | 29.00 | 12.25 | 21.00 |
| 172310-2202 | NATURAL | 2 | KEY B | 3.50 | 8.00 | 1.75 | 0.00 |
| 172310-2203 | NATURAL | 3 | KEY B | 7.00 | 11.50 | 3.50 | 0.00 |
| 172310-2204 | NATURAL | 4 | KEY B | 10.50 | 15.00 | 5.25 | 7.00 |
| 172310-2205 | NATURAL | 5 | KEY B | 14.00 | 18.50 | 7.00 | 10.50 |
| 172310-2206 | NATURAL | 6 | KEY B | 17.50 | 22.00 | 8.75 | 14.00 |
| 172310-2207 | NATURAL | 7 | KEY B | 21.00 | 25.50 | 10.50 | 17.50 |
| 172310-2208 | NATURAL | 8 | KEY B | 24.50 | 29.00 | 12.25 | 21.00 |

| 30 MICROINCH GOLD PLATING | | | | | | | |
|---------------------------|---------|--------------|------------|-------|-------|-------|-------|
| PART NO. | COLOR | CIRCUIT SIZE | KEY OPTION | DIM A | DIM F | DIM C | DIM D |
| 172310-1302 | BLACK | 2 | KEY A | 3.50 | 8.00 | 1.75 | 0.00 |
| 172310-1303 | BLACK | 3 | KEY A | 7.00 | 11.50 | 3.50 | 0.00 |
| 172310-1304 | BLACK | 4 | KEY A | 10.50 | 15.00 | 5.25 | 7.00 |
| 172310-1305 | BLACK | 5 | KEY A | 14.00 | 18.50 | 7.00 | 10.50 |
| 172310-1306 | BLACK | 6 | KEY A | 17.50 | 22.00 | 8.75 | 14.00 |
| 172310-1307 | BLACK | 7 | KEY A | 21.00 | 25.50 | 10.50 | 17.50 |
| 172310-1308 | BLACK | 8 | KEY A | 24.50 | 29.00 | 12.25 | 21.00 |
| 172310-2302 | NATURAL | 2 | KEY B | 3.50 | 8.00 | 1.75 | 0.00 |
| 172310-2303 | NATURAL | 3 | KEY B | 7.00 | 11.50 | 3.50 | 0.00 |
| 172310-2304 | NATURAL | 4 | KEY B | 10.50 | 15.00 | 5.25 | 7.00 |
| 172310-2305 | NATURAL | 5 | KEY B | 14.00 | 18.50 | 7.00 | 10.50 |
| 172310-2306 | NATURAL | 6 | KEY B | 17.50 | 22.00 | 8.75 | 14.00 |
| 172310-2307 | NATURAL | 7 | KEY B | 21.00 | 25.50 | 10.50 | 17.50 |
| 172310-2308 | NATURAL | 8 | KEY B | 24.50 | 29.00 | 12.25 | 21.00 |



PCB LAYOUT 2 CIRCUIT COMPONENT SIDE
RECOMMENDED PCB THICKNESS 1.60MM-2.40MM

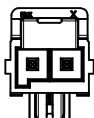


OPTION 1: LATCH FLUSH WITH PCB EDGE
OPTION 2: HOUSING BODY FLUSH WITH PCB EDGE

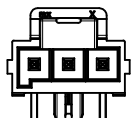
NOTE: DATUM -A- IS ON PCB COMPONENT SIDE

| | | | | | | | |
|--|---|--|--------------------------------|---------------------|--------------|--|--|
| SEE PAGE 1 IEC NO: UCP2015-4103 DRAWN/DROSCA CHKD: APPR:RHODGE 2015/04/13 2015/04/15 | QUALITY SYMBOLS | GENERAL TOLERANCES (UNLESS SPECIFIED) | DIMENSION STYLE | SCALE | DESIGN UNITS | THIRD ANGLE PROJECTION | |
| | $\nabla=0$ $\nabla=0$ $\nabla=0$ | mm INCH 4 PLACES ± --- ± --- 3 PLACES ± --- ± --- 2 PLACES ± 0.25 ± --- 1 PLACE ± 0.50 ± --- 0 PLACE ± --- ± --- | MM ONLY | 4:1 | METRIC | DRAWN BY DATE DROSCA 2014/03/05 CHECKED BY DATE APPROVED BY DATE JCOMERCI 2014/04/24 | TITLE ULTRA-FIT R/A HEADER 2-8 CKTS SINGLE ROW |
| | ANGULAR ±1/2° DRAFT WHERE APPLICABLE MUST REMAIN WITHIN DIMENSIONS | MATERIAL NO. SEE PAGE 1 | DOCUMENT NO. SD-172310-1000 | SHEET NO. 2 OF 3 | | | |
| | THIS DRAWING CONTAINS INFORMATION THAT IS PROPRIETARY TO MOLEX INCORPORATED AND SHOULD NOT BE USED WITHOUT WRITTEN PERMISSION | | | | | | |

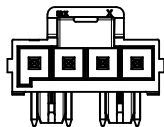
20 19 18 17 16 15 14 13 12 11 10 9 8 7 6 5 4 3 2 1



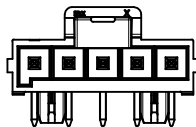
2 CKT



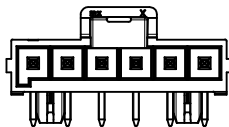
3 CKT



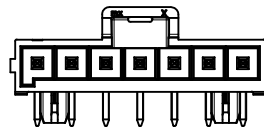
4 CKT



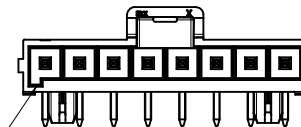
5 CKT



6 CKT

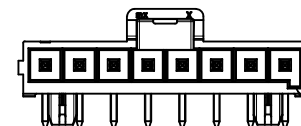


7 CKT



8 CKT

KEY A
(BLACK)



KEY B
(NATURAL)

| | | | | | | |
|--|----------------------|--|---|-------|----------------|---|
| SEE PAGE 1 IEC NO: UCF2015-4103 DRAWN: DROSCA 2015/04/13 CHKD: APPR: RHODGE 2015/04/15 REV: | QUALITY SYMBOLS | GENERAL TOLERANCES (UNLESS SPECIFIED) | DIMENSION STYLE | SCALE | DESIGN UNITS | THIRD ANGLE PROJECTION |
| | ▽=0 | 4 PLACES ± mm ± INCH | MM ONLY | 4:1 | METRIC | |
| | ▽=0 | 3 PLACES ± --- ± --- | DRAWN BY DATE | | | TITLE |
| | ▽=0 | 2 PLACES ± 0.25 ± --- | DROSCA 2014/03/05 | | | ULTRA-FIT R/A HEADER 2-8 CKTS SINGLE ROW |
| | 1 PLACE ± 0.50 ± --- | 1 PLACE ± 0.50 ± --- | CHECKED BY DATE | | | |
| | 0 PLACE ± --- ± --- | 0 PLACE ± --- ± --- | APPROVED BY DATE | | | |
| | | ANGULAR ± 1/2° | JCOMERCI 2014/04/24 | | | |
| | | DRAFT WHERE APPLICABLE MUST REMAIN WITHIN DIMENSIONS | MATERIAL NO. | | | |
| | | | SEE PAGE 1 | | | |
| | | | SIZE D | | | |
| | | | THIS DRAWING CONTAINS INFORMATION THAT IS PROPRIETARY TO MOLEX INCORPORATED AND SHOULD NOT BE USED WITHOUT WRITTEN PERMISSION | | | |
| | | | | | DOCUMENT NO. | SHEET NO. |
| | | | | | SD-172310-1000 | 3 OF 3 |

molex

19 18 17 16 15 14 13 12 11 10 9 8 7 6 5 4 3 2 1



Компания «ЭлектроПласт» предлагает заключение долгосрочных отношений при поставках импортных электронных компонентов на взаимовыгодных условиях!

Наши преимущества:

- Оперативные поставки широкого спектра электронных компонентов отечественного и импортного производства напрямую от производителей и с крупнейших мировых складов;
- Поставка более 17-ти миллионов наименований электронных компонентов;
- Поставка сложных, дефицитных, либо снятых с производства позиций;
- Оперативные сроки поставки под заказ (от 5 рабочих дней);
- Экспресс доставка в любую точку России;
- Техническая поддержка проекта, помощь в подборе аналогов, поставка прототипов;
- Система менеджмента качества сертифицирована по Международному стандарту ISO 9001;
- Лицензия ФСБ на осуществление работ с использованием сведений, составляющих государственную тайну;
- Поставка специализированных компонентов (Xilinx, Altera, Analog Devices, Intersil, Interpoint, Microsemi, Aeroflex, Peregrine, Syfer, Eurofarad, Texas Instrument, Miteq, Cobham, E2V, MA-COM, Hittite, Mini-Circuits, General Dynamics и др.);

Помимо этого, одним из направлений компании «ЭлектроПласт» является направление «Источники питания». Мы предлагаем Вам помощь Конструкторского отдела:

- Подбор оптимального решения, техническое обоснование при выборе компонента;
- Подбор аналогов;
- Консультации по применению компонента;
- Поставка образцов и прототипов;
- Техническая поддержка проекта;
- Защита от снятия компонента с производства.



Как с нами связаться

Телефон: 8 (812) 309 58 32 (многоканальный)

Факс: 8 (812) 320-02-42

Электронная почта: org@eplast1.ru

Адрес: 198099, г. Санкт-Петербург, ул. Калинина, дом 2, корпус 4, литера А.