

dsPIC30F Speech Encoding/Decoding Library

Summary

The **dsPIC30F Speech Encoding/Decoding Library** performs toll-quality voice compression and voice decompression. The library is based on a modified version of Speex source code and features a 16:1 compression ratio. It samples speech at 8 kHz and compresses it to a rate of 8 kbps. Storing compressed speech for playback requires approximately 1 KByte of memory for each second of speech. The library is especially suitable for the following voice-based applications:

- Answering machines
- Building and home safety systems
- Intercoms
- Smart appliances
- Voice recorders
- Walkie-talkies
- Any application using message playback

Description

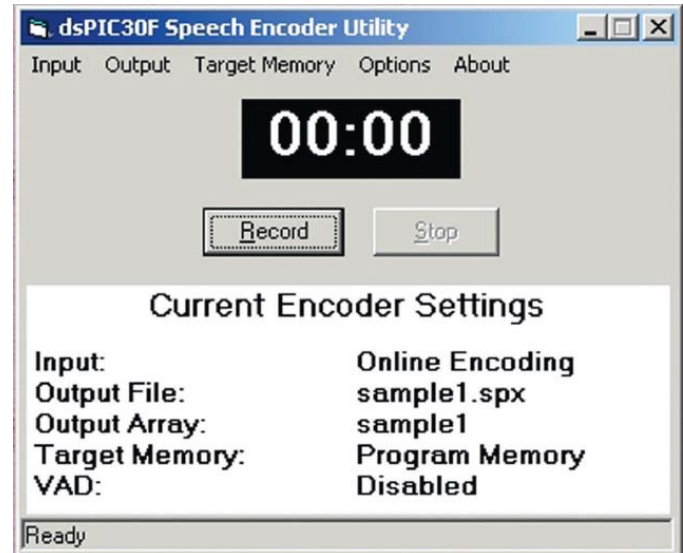
The Speech Encoding/Decoding Library is a modified version of the Speex speech coder made specifically for the dsPIC30F family of Digital Signal Controllers (DSCs). Encoding uses Code Excited Linear Prediction (CELP), which is a popular coding technique. CELP provides a reasonable trade-off between performance and computational complexity. The library samples speech at 8 kHz and compresses it to a rate of 8 kbps. The library is appropriate for half-duplex systems, such as answering machines, intercoms and walkie-talkies. With the decoder's small footprint, the library is also ideal for playback-only applications, such as building safety systems and smart appliances.

Predominantly written in assembly language, the Speech Encoding/Decoding Library optimizes computational performance and minimizes RAM usage. A well-defined API makes it easy to integrate with your application.

A flexible analog interface gives your design several options to consider. The speech encoder samples speech at 8 kHz using either an external codec or the on-chip 12-bit analog-to-digital converter. The speech decoder plays decoded speech through an external codec or the on-chip pulse-width-modulator (PWM).

A PC-based Speech Encoder Utility program (pictured above) allows you to create your own encoded speech files for playback. Encoded speech files are made from either a PC microphone or existing WAV file. Once you create the encoded speech files, they are added to your MPLAB® C30 project, just like a regular source file, and built into your application.

The Speech Encoder Utility allows you to select four target memory areas to store your speech file: program memory, data EEPROM, RAM and external flash memory. External flash memory allows you to store many minutes of speech (1 minute of speech requires 60 KB) and it is supported through a dsPIC30F general purpose I/O port.



Features

Key features of the Speech Encoding/Decoding Library include:

- Fixed 8 kHz sample rate
- Fixed 8 kbps output rate
- PESQ-based Mean Opinion Score: 3.7 – 4.2 (out of 5.0)
- Code Excited Linear Prediction (CELP)-based coding
- Two analog input interfaces – codec or on-chip 12-bit ADC
- Two analog output interfaces – codec or on-chip PWM
- Optional Voice Activity Detection
- Playback-only applications will benefit from the Speech Encoder Utility. It allows you to make encoded speech files from your desktop using a PC microphone or WAV file
- Storing compressed speech requires 1 KB of memory per second of speech
- Off-chip support for playback of long speech samples
- Royalty free (only one-time license fee)
- Full compliance with Microchip MPLAB® C30 Language Tools
- *dsPIC30F Speech Encoding/Decoding Library User's Guide* is provided to help the user understand and use the library (DS70154)
- Designed to run on dsPICDEM™ 1.1 General Purpose Development Board (DM300014)



MICROCHIP

Development Systems

Microchip Technology Incorporated

Resource Requirements

Decoder:

Playback Interface: Si-3000 Audio Codec or PWM
Computational Power: 3 MIPs
Program Flash Memory: 15 KB
RAM*: 3.2 KB

Encoder:

Sampling Interface: Si-3000 Audio Codec or 12-bit ADC
Computational Power: 19 MIPs (worst case)
Program Flash Memory: 33 KB
RAM*: 5.4 KB (1.2 KB is scratch)

*Full-duplex support is presently not possible due to RAM requirements, but support will be provided with future devices. Half-duplex support is now possible and requires 6.8 KB of RAM.

Host Requirements

- PC-compatible system with an Intel Pentium® class or higher processor or equivalent
- A minimum of 16 MB RAM
- A minimum of 40 MB available for hard drive space.
- CD-ROM drive
- Microsoft Windows® 98, Windows NT® 4.0 or Windows XP®

Devices Supported

- dsPIC30F5011
- dsPIC30F6011
- dsPIC30F6013
- dsPIC30F5013
- dsPIC30F6012
- dsPIC30F6014

Part Numbers and Ordering Information

dsPIC30F Speech Encoding/Decoding Library

Part Number	Description	Availability
SW300070-EVAL	dsPIC30F Speech Encoder/Decoder Library Software License (Evaluation Only)	Q2/2005
SW300070-5K	dsPIC30F Speech Encoder/Decoder Library Software License (Up to 5K Units)	Q2/2005
SW300070-25K	dsPIC30F Speech Encoder/Decoder Library Software License (Up to 25K Units)	Q2/2005
SW300070-100K	dsPIC30F Speech Encoder/Decoder Library Software License (Up to 100K Units)	Q2/2005

Note: Quantities are per project, payable as a one-time license fee based on estimated lifetime volume for products resulting from the project. Please consult the factory for quantities above 100K.

dsPIC® DSC Development Tools from Microchip

MPLAB® IDE	Free
MPLAB® Visual Device Initializer (included in MPLAB® IDE)	
MPLAB® C30 C Compiler	SW006012
MPLAB® ICD 2 In-Circuit Debugger/Programmer	DV164005, DV164007
MPLAB® ICE 4000	ICE4000
MPLAB® PM3 Universal Device Programmer	DV007004
dsPIC30F Math Library (included in download of MPLAB® C30 C Compiler)	Free
dsPIC30F DSP Library	Free
dsPIC30F Peripheral Library	Free
dsPICworks™ Data Analysis and DSP Software	Free
dsPIC® DSC Digital Filter Design	SW300001
dsPIC30F Soft-Modem Library	SW300002/3/4/5
dsPIC® DSC Speech Recognition Library	SW300010/11/12
dsPIC® DSC Symmetric Key Embedded Encryption Library	SW300050
dsPIC® DSC Asymmetric Key Embedded Encryption Library	SW300055
dsPIC30F Acoustic Echo Cancellation Library	SW300060
dsPIC30F Noise Suppression Library	SW300040
CMX-RTX™ for dsPIC30F	SW300031
CMX-Tiny+™ for dsPIC30F	SW300032
CMX-Scheduler™ for dsPIC® Devices	Free at www.cmx.com
dsPICDEM™ Starter Demonstration Board	DM300016
dsPICDEM™ 28-pin Starter Demonstration Board	DM300017
dsPICDEM™ 1.1 General Purpose Development Board	DM300014
dsPICDEM™ MC1 Motor Control Development System	DM300020
dsPICDEM.net™ 1 Connectivity Development Boards	DM300004-1
dsPICDEM.net™ 2 Connectivity Development Boards	DM300004-2

Visit our web site at www.microchip.com for additional product information and your local sales office.

Microchip Technology Inc. • 2355 W. Chandler Blvd. • Chandler, AZ 85224-6199 USA • (480) 792-7200 • FAX (480) 792-7277

The Microchip name and logo, the Microchip logo, Accuron, dsPIC, KeELo, microID, MPLAB, PIC, PICmicro, PICSTART, PRO MATE, PowerSmart, rPIC and SmartShunt are registered trademarks of Microchip Technology Incorporated in the U.S.A. and other countries. AmpLab, FilterLab, Migratable Memory, MXDEV, MXLAB, PICMASTER, SEEVAL, SmartSensor and The Embedded Control Solutions Company are registered trademarks of Microchip Technology Incorporated in the U.S.A. Analog-for-the-Digital Age, Application Maestro, dsPICDEM, dsPICDEM.net, dsPICworks, ECAN, ECONOMONITOR, FanSense, FlexROM, fuzzyLAB, In-Circuit Serial Programming, ICSF, ICEPIC, MPASM, MPLIB, MPLINK, MPSIM, PICkit, PICDEM, PICDEM.net, PICLAB, PICTail, PowerCal, PowerInfo, PowerMate, PowerTool, rLAB, rPICDEM, Select Mode, Smart Serial, SmartTel Total Endurance and WiperLock are trademarks of Microchip Technology Incorporated in the U.S.A. and other countries. SQTP is a service mark of Microchip Technology Incorporated in the U.S.A. All other trademarks mentioned herein are property of their respective companies. © 2005, Microchip Technology Incorporated, Printed in the U.S.A., All Rights Reserved. 4/05

DS70146A



Mouser Electronics

Authorized Distributor

Click to View Pricing, Inventory, Delivery & Lifecycle Information:

[Microchip:](#)

[SW300070-100K](#) [SW300070-25K](#) [SW300070-5K](#) [SW300070-EVAL](#)



Компания «ЭлектроПласт» предлагает заключение долгосрочных отношений при поставках импортных электронных компонентов на взаимовыгодных условиях!

Наши преимущества:

- Оперативные поставки широкого спектра электронных компонентов отечественного и импортного производства напрямую от производителей и с крупнейших мировых складов;
- Поставка более 17-ти миллионов наименований электронных компонентов;
- Поставка сложных, дефицитных, либо снятых с производства позиций;
- Оперативные сроки поставки под заказ (от 5 рабочих дней);
- Экспресс доставка в любую точку России;
- Техническая поддержка проекта, помощь в подборе аналогов, поставка прототипов;
- Система менеджмента качества сертифицирована по Международному стандарту ISO 9001;
- Лицензия ФСБ на осуществление работ с использованием сведений, составляющих государственную тайну;
- Поставка специализированных компонентов (Xilinx, Altera, Analog Devices, Intersil, Interpoint, Microsemi, Aeroflex, Peregrine, Syfer, Eurofarad, Texas Instrument, Miteq, Cobham, E2V, MA-COM, Hittite, Mini-Circuits, General Dynamics и др.);

Помимо этого, одним из направлений компании «ЭлектроПласт» является направление «Источники питания». Мы предлагаем Вам помощь Конструкторского отдела:

- Подбор оптимального решения, техническое обоснование при выборе компонента;
- Подбор аналогов;
- Консультации по применению компонента;
- Поставка образцов и прототипов;
- Техническая поддержка проекта;
- Защита от снятия компонента с производства.



Как с нами связаться

Телефон: 8 (812) 309 58 32 (многоканальный)

Факс: 8 (812) 320-02-42

Электронная почта: org@eplast1.ru

Адрес: 198099, г. Санкт-Петербург, ул. Калинина, дом 2, корпус 4, литера А.