

## KNW013/020-88 Series Power Modules; DC-DC Converters

### 36 – 75V<sub>dc</sub> Input; 3.3 to 5.0V<sub>dc</sub> Output; 13 to 20A Output Current

### RoHS Compliant



### Applications

- Distributed power architectures
- Wireless networks
- Access and optical networking equipment including Power over Ethernet (PoE)
- Enterprise networks
- Latest generation IC's (DSP, FPGA, ASIC) and Microprocessor powered applications

### Options

- Negative Remote On/Off logic
- Surface Mount (Tape and Reel, -SR Suffix)
- Over current /Over voltage protections (auto-restart)
- Shorter lead trim

### Description

The KNW013/020-88 (Sixteenth-brick) series power modules are isolated dc-dc converters that operate over a wide input voltage range of 36 to 75V<sub>dc</sub> and provide a single precisely regulated output. The output is fully isolated from the input, allowing versatile polarity configurations and grounding connections. The modules exhibit high efficiency, typical efficiency of 91% for 3.3V/20A. These open frame modules are available either in surface-mount (-SR) or in through-hole (TH) form.

### Features

- Compliant to RoHS EU Directive 2011/65/EU (Z versions)
- Compliant to RoHS EU Directive 2011/65/EU under exemption 7b (Lead solder exemption). Exemption 7b will expire after June 1, 2016 at which time this product will no longer be RoHS compliant (non-Z versions)
- Delivers up to 20A output current  
5V(13A), 3.3V(20A)
- High efficiency – 91% at 3.3V full load
- Small size and low profile:  
33.0 mm x 22.9 mm x 10.2 mm  
(1.30 in x 0.9 in x 0.40 in)
- Industry standard DOSA footprint
- -20% to +10% output voltage adjustment trim
- Remote on/off
- Remote sense
- No reverse current during output shutdown
- Over temperature protection (auto-restart)
- Output overcurrent/overvoltage protection (latching)
- Wide operating temperature range (-40°C to 85°C)
- 2250 Vdc Isolation tested in compliance with IEEE 802.3<sup>a</sup> PoE standards
- Meets the voltage isolation requirements for ETSI 300-132-2 and complies with and is licensed for Basic Insulation rating per EN60950-1
- UL\*Recognized to UL60950-1, CAN/CSA† C22.2 No.60950-1, and EN60950-1(VDE † 0805-1) Licensed
- CE mark meets 2006/95/EC directive<sup>§</sup>
- ISO\*\* 9001 and ISO 14001 certified manufacturing facilities

## KNW013/020-88 Series Power Modules; DC-DC Converters 2A Digital 36 – 75Vdc Input; 3.3 to 5.0Vdc Output; 13 to 20A Output Current

### Absolute Maximum Ratings

Stresses in excess of the absolute maximum ratings can cause permanent damage to the device. These are absolute stress ratings only, functional operation of the device is not implied at these or any other conditions in excess of those given in the operations sections of the data sheet. Exposure to absolute maximum ratings for extended periods can adversely affect the device reliability.

| Parameter   | Device | Symbol         | Min  | Max  | Unit |
|---|--------|----------------|------|------|------|
| Operating Input Voltage   |        |                |      |      |      |
| Continuous  | All    | $V_{IN}$       | -0.3 | 80   | Vdc  |
| Transient (100 ms)  | All    | $V_{IN,trans}$ | -0.3 | 100  | Vdc  |
| Operating Ambient Temperature<br>(see Thermal Considerations section) | All    | $T_A$          | -40  | 85   | °C   |
| Storage Temperature   | All    | $T_{stg}$      | -55  | 125  | °C   |
| I/O Isolation voltage (100% Factory Hi-Pot tested)                    | All    | —              | —    | 2250 | Vdc  |

### Electrical Specifications

Unless otherwise indicated, specifications apply over all operating input voltage, resistive load, and temperature conditions.

| Parameter  | Device | Symbol             | Min                            | Typ | Max | Unit              |
|--|--------|--------------------|--------------------------------|-----|-----|-------------------|
| Operating Input Voltage  | All    | $V_{IN}$           | 36                             | 48  | 75  | V <sub>dc</sub>   |
| Maximum Input Current<br>( $V_{IN} = V_{IN, min}$ to $V_{IN, max}$ , $I_O = I_{O, max}$ )  | All    | $I_{IN, max}$      |                                | 1.7 | 2.4 | A <sub>dc</sub>   |
| Input No Load Current<br>( $V_{IN} = V_{IN, nom}$ , $I_O = 0$ , module enabled)  | All    | $I_{IN, No load}$  |                                | 45  |     | mA                |
| Input Stand-by Current<br>( $V_{IN} = V_{IN, nom}$ , module disabled)  | All    | $I_{IN, stand-by}$ |                                | 6   | 8   | mA                |
| Inrush Transient   | All    | $I^2t$             |                                |     | 0.1 | A <sup>2</sup> s  |
| Input Reflected Ripple Current, peak-to-peak<br>(5Hz to 20MHz, 1μH source impedance; $V_{IN, min}$ to $V_{IN, max}$ , $I_O = I_{O, max}$ ; See Test configuration section) | All    |                    |                                | 30  |     | mA <sub>p-p</sub> |
| Input Ripple Rejection (120Hz)   | All    |                    |                                | 60  |     | dB                |
| EMC, EN55022   |        |                    | See EMC Considerations section |     |     |                   |

#### CAUTION: This power module is not internally fused. An input line fuse must always be used.

This power module can be used in a wide variety of applications, ranging from simple standalone operation to an integrated part of sophisticated power architectures. To preserve maximum flexibility, internal fusing is not included, however, to achieve maximum safety and system protection, always use an input line fuse. The safety agencies require a time-delay fuse with a maximum rating of 5 A (see Safety Considerations section). Based on the information provided in this data sheet on inrush energy and maximum dc input current, the same type of fuse with a lower rating can be used. Refer to the fuse manufacturer's data sheet for further information.

## KNW013/020-88 Series Power Modules; DC-DC Converters

36 – 75Vdc Input; 3.3 to 5.0Vdc Output; 13 to 20A Output Current

## Electrical Specifications (continued)

| Parameter   | Device            | Symbol                           | Min          | Typ          | Max               | Unit   |
|---|-------------------|----------------------------------|--------------|--------------|-------------------|--|
| Output Voltage Set-point<br>( $V_{IN}=V_{IN, min}$ , $I_O=I_{O, max}$ , $T_A=25^\circ\text{C}$ )  | 5.0V<br>3.3V      | $V_{O, set}$<br>$V_{O, set}$     | 4.93<br>3.25 | 5.0<br>3.3   | 5.07<br>3.35      | $V_{dc}$<br>$V_{dc}$                               |
| Output Voltage<br>(Over all operating input voltage, resistive load, and temperature conditions until end of life)  | All               | $V_O$                            | -3.0         |              | +3.0              | % $V_{O, set}$                                     |
| Adjustment Range<br>Selected by an external resistor  | All               | $V_{O, adj}$                     | -20.0        |              | +10.0             | % $V_{O, set}$                                     |
| Output Regulation<br>Line ( $V_{IN}=V_{IN, min}$ to $V_{IN, max}$ )<br>Load ( $I_O=I_{O, min}$ to $I_{O, max}$ )<br>Temperature ( $T_{ref}=T_{A, min}$ to $T_{A, max}$ )  | All<br>All<br>All |                                  | —<br>—<br>—  | —<br>—<br>—  | 0.1<br>0.1<br>1.0 | % $V_{O, set}$<br>% $V_{O, set}$<br>% $V_{O, set}$ |
| Output Ripple and Noise on nominal output<br>( $V_{IN}=V_{IN, nom}$ , $I_O=I_{O, max}$ , $T_A=T_{A, min}$ to $T_{A, max}$ )<br>RMS (5Hz to 20MHz bandwidth)<br>Peak-to-Peak (5Hz to 20MHz bandwidth)  | All               |                                  | —<br>—       | 25<br>75     | 30<br>100         | $\text{mV}_{rms}$<br>$\text{mV}_{pk-pk}$           |
| External Capacitance  | 5.0V<br>3.3V      | $C_{O, max}$<br>$C_{O, max}$     | 0            | —            | 10,000<br>20,000  | $\mu\text{F}$<br>$\mu\text{F}$                     |
| Rated Output Current  | 5.0V<br>3.3V      | $I_{O, Rated}$<br>$I_{O, Rated}$ | 0<br>0       | —<br>—       | 13<br>20          | $A_{dc}$<br>$A_{dc}$                               |
| Output Current Limit Inception (Hiccup Mode )<br>( $V_O=90\%$ of $V_{O, set}$ )   | All               | $I_{O, lim}$                     | 115          | 120          | 130               | % $I_{O, Rated}$                                   |
| Output Short-Circuit Current<br>( $V_O \leq 250\text{mV}$ ) ( Hiccup Mode )   | All               | $I_{O, s/c}$                     | —            | 20           | —                 | % $I_{O, max}$<br>Arms                             |
| Efficiency<br>$V_{IN}=V_{IN, nom}$ , $T_A=25^\circ\text{C}$ ; $I_O=I_{O, max}$ ; $V_O=V_{O, set}$   | 5.0V<br>3.3V      | $\eta$<br>$\eta$                 |              | 91.0<br>91.0 |                   | %<br>%   |
| Switching Frequency   | All               | $f_{sw}$                         | —            | 400          | —                 | kHz  |
| Dynamic Load Response<br>( $di_O/dt=0.1\text{A}/\mu\text{s}$ ; $V_{IN}=V_{IN, nom}$ ; $T_A=25^\circ\text{C}$ )<br>Load Change from $I_O=50\%$ to $75\%$ or $25\%$ to $50\%$ of $I_{O, max}$ ;<br>Peak Deviation<br>Settling Time ( $V_O < 10\%$ peak deviation) | All<br>All        | $V_{pk}$<br>$t_s$                | —<br>—       | 4<br>200     | —<br>—            | % $V_{O, set}$<br>$\mu\text{s}$                    |
| ( $di_O/dt=1.0\text{A}/\mu\text{s}$ ; $V_{IN}=V_{IN, nom}$ ; $T_A=25^\circ\text{C}$ )<br>Load Change from $I_O=50\%$ to $75\%$ or $25\%$ to $50\%$ of $I_{O, max}$ ;<br>Peak Deviation<br>Settling Time ( $V_O < 10\%$ peak deviation)                          | All<br>All        | $V_{pk}$<br>$t_s$                | —<br>—       | 5<br>200     | —<br>—            | % $V_{O, set}$<br>$\mu\text{s}$                    |

## Isolation Specifications

| Parameter             | Device | Symbol    | Min | Typ  | Max  | Unit             |
|-----------------------|--------|-----------|-----|------|------|------------------|
| Isolation Capacitance | All    | $C_{iso}$ | —   | 1000 | —    | pF               |
| Isolation Resistance  | All    | $R_{iso}$ | 10  | —    | —    | $\text{M}\Omega$ |
| I/O Isolation Voltage | All    | All       | —   | —    | 2250 | $V_{dc}$         |

## KNW013/020-88 Series Power Modules; DC-DC Converters 2A Digital 36 – 75Vdc Input; 3.3 to 5.0Vdc Output; 13 to 20A Output Current

### General Specifications

| Parameter   | Device | Symbol | Min | Typ         | Max | Unit                   |
|---|--------|--------|-----|-------------|-----|------------------------|
| Calculated Reliability Based upon Telcordia SR-332 Issue 2: Method I, Case 3, ( $I_o=80\%I_{o,max}$ , $T_A=40^\circ\text{C}$ , Airflow = 200 lfm), 90% confidence | 5.0V   | MTBF   |     | 4,114,000   |     | Hours                  |
|   | 5.0V   | FIT    |     | 243.1       |     | 10 <sup>9</sup> /Hours |
|   | 3.3V   | MTBF   |     | 4,589,027   |     | Hours                  |
|   | 3.3V   | FIT    |     | 217.9       |     | 10 <sup>9</sup> /Hours |
| Powered Random Vibration ( $V_{IN}=V_{IN,min}$ , $I_o=I_{o,max}$ , $T_A=25^\circ\text{C}$ , 0 to 5000Hz, 10Grms)  | All    |        |     | 90          |     | Minutes                |
| Weight  | All    |        | —   | 15.6 (0.55) | —   | g (oz.)                |

### Feature Specifications

Unless otherwise indicated, specifications apply over all operating input voltage, resistive load, and temperature conditions. See Feature Descriptions for additional information.

| Parameter   | Device | Symbol        | Min  | Typ  | Max  | Unit          |
|---|--------|---------------|------|------|------|---------------|
| Remote On/Off Signal Interface<br>( $V_{IN}=V_{IN,min}$ to $V_{IN,max}$ ; open collector or equivalent, signal referenced to $V_{IN}$ terminal)<br>Negative Logic: device code suffix "1"<br>Logic Low = module On, Logic High = module Off<br>Positive Logic: No device code suffix required<br>Logic Low = module Off, Logic High = module On<br>Logic Low - Remote On/Off Current<br>Logic Low - On/Off Voltage<br>Logic High Voltage - (Typ = Open Collector)<br>Logic High maximum allowable leakage current   | All    | $I_{on/off}$  | —    | —    | 1.0  | mA            |
|   | All    | $V_{on/off}$  | -0.7 | —    | 1.2  | V             |
|   | All    | $V_{on/off}$  | —    | —    | 5    | V             |
|   | All    | $I_{on/off}$  | —    | —    | 10   | $\mu\text{A}$ |
| Turn-On Delay and Rise Times<br>( $I_o=I_{o,max}$ , $V_{IN}=V_{IN,nom}$ , $T_A = 25^\circ\text{C}$ )<br>Case 1: On/Off input is set to Logic Low (Module ON) and then input power is applied (delay from instant at which $V_{IN} = V_{IN,min}$ until $V_o=10\%$ of $V_{O,set}$ )<br>Case 2: Input power is applied for at least 1 second and then the On/Off input is set from OFF to ON ( $T_{delay}$ = from instant at which $V_{IN}=V_{IN,min}$ until $V_o = 10\%$ of $V_{O,set}$ )<br>Output voltage Rise time (time for $V_o$ to rise from 10% of $V_{O,set}$ to 90% of $V_{O,set}$ ) | All    | $T_{delay}$   | —    | 13   | 20   | msec          |
|   | All    | $T_{delay}$   | —    | 30   | 35   | msec          |
|   | 5.0    | $T_{rise}$    | —    | 20   | 25   | msec          |
|   | 3.3    | $T_{rise}$    | —    | 6    | 10   | msec          |
| Output voltage overshoot - Startup<br>$I_o= I_{o,max}$ ; $V_{IN}=V_{IN,min}$ to $V_{IN,max}$ , $T_A = 25^\circ\text{C}$   |        |               |      | —    | 3    | % $V_{O,set}$ |
| Remote Sense Range  | All    |               |      |      | +10  | % $V_{O,set}$ |
| Output Overvoltage Protection   | 5.0V   | $V_{o,limit}$ | 6.1  | —    | 7.0  | $V_{dc}$      |
|   | 3.3V   | $V_{o,limit}$ | 4.0  | —    | 4.6  | $V_{dc}$      |
| Input Undervoltage Lockout  |        |               |      |      |      |               |
| Turn-on Threshold   | All    | $V_{uv/on}$   | 32.5 | 34.0 | 35.8 | $V_{dc}$      |
| Turn-off Threshold  | All    | $V_{uv/off}$  | 30.0 | 31.0 | 33.0 | $V_{dc}$      |
| Hysteresis  | All    | $V_{hyst}$    | 2    | —    | —    | $V_{dc}$      |

# KNW013/020-88 Series Power Modules; DC-DC Converters

36 – 75Vdc Input; 3.3 to 5.0Vdc Output; 13 to 20A Output Current

## Characteristic Curves

The following figures provide typical characteristics for the KNW013A0Axx-88 (5V, 13A) at 25°C. The figures are identical for either positive or negative remote On/Off logic.

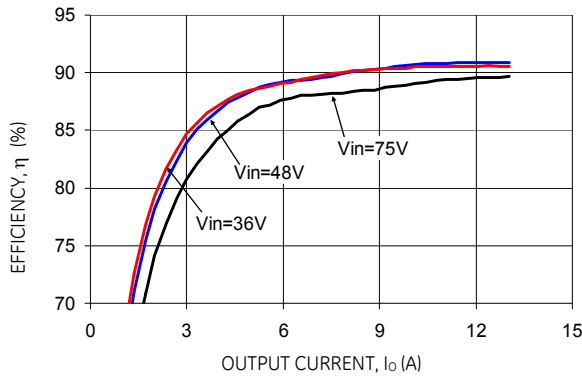


Figure 1. Converter Efficiency versus Output Current.

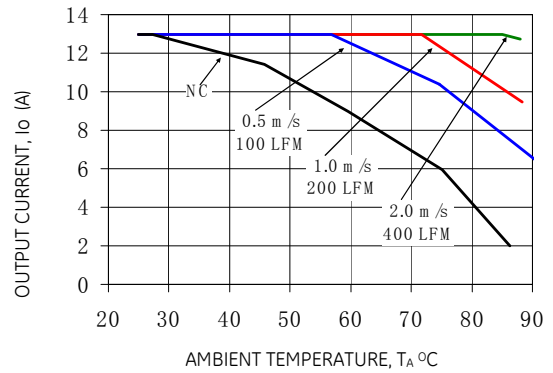


Figure 4. Derating Output Current versus Local Ambient Temperature and Airflow.

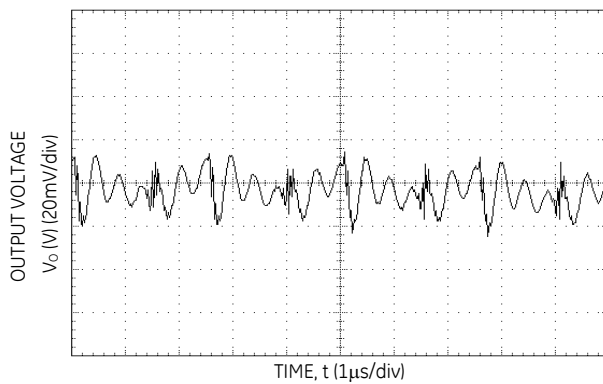


Figure 2. Typical output ripple and noise ( $V_{IN} = V_{IN,NOM}$ ,  $I_o = I_{o,max}$ ).

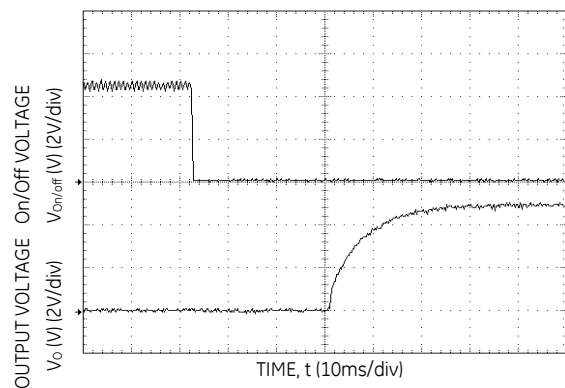


Figure 5. Typical Start-up Using Remote On/Off, negative logic version shown ( $V_{IN} = V_{IN,NOM}$ ,  $I_o = I_{o,max}$ ).

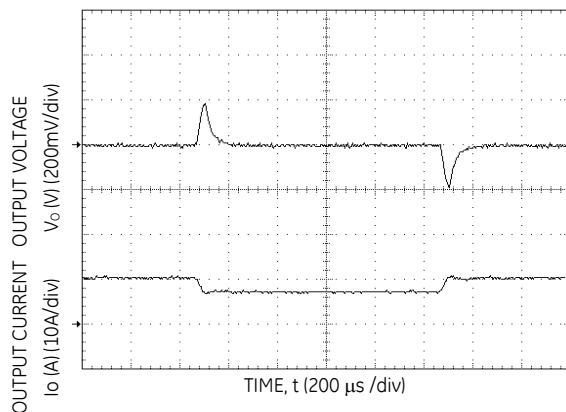


Figure 3. Transient Response to Dynamic Load Change, 0.1A/μs, from 75% to 50% to 75% of full load.

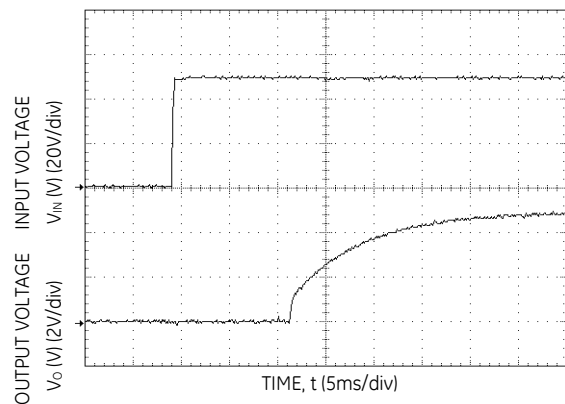


Figure 6. Typical Start-up Using Input Voltage ( $V_{IN} = V_{IN,NOM}$ ,  $I_o = I_{o,max}$ ).

# KNW013/020-88 Series Power Modules; DC-DC Converters 2A Digital

36 – 75Vdc Input; 3.3 to 5.0Vdc Output; 13 to 20A Output Current

## Characteristic Curves

The following figures provide typical characteristics for the KNW020A0Fxx-88 (3.3V, 20A) at 25°C. The figures are identical for either positive or negative remote On/Off logic.

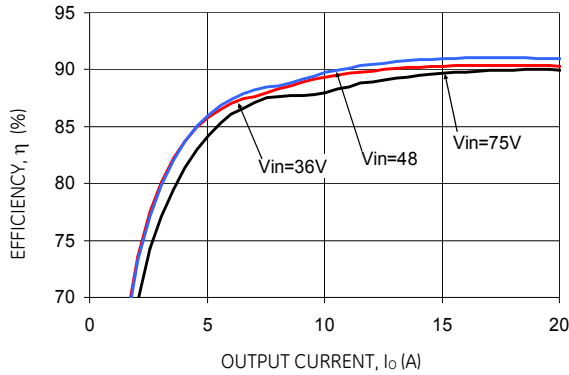


Figure 7. Converter Efficiency versus Output Current.

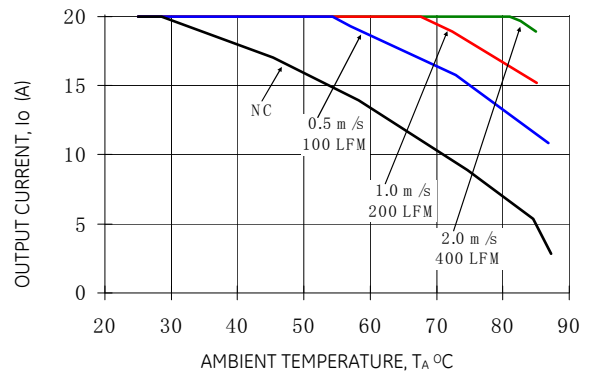


Figure 10. Derating Output Current versus Local Ambient Temperature and Airflow.

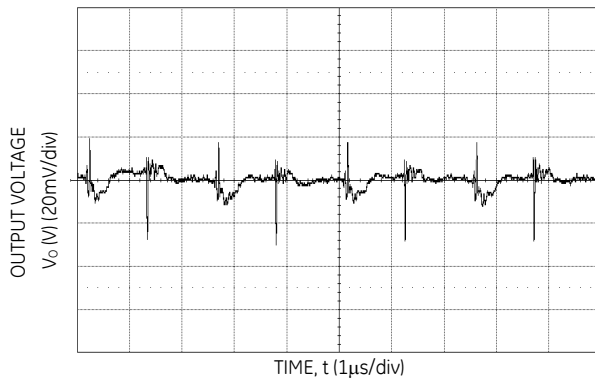


Figure 8. Typical output ripple and noise ( $V_{IN} = V_{IN,NOM}$ ,  $I_o = I_{o,max}$ ).

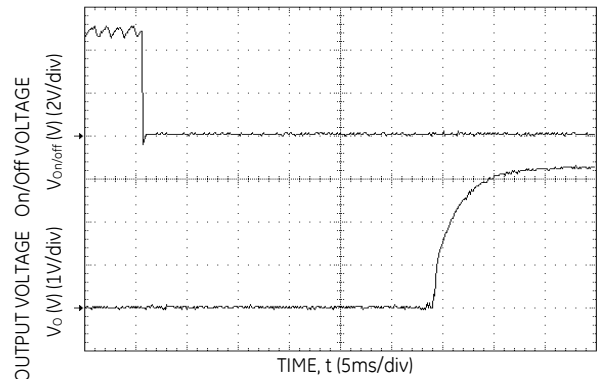


Figure 11. Typical Start-up Using Remote On/Off, negative logic version shown ( $V_{IN} = V_{IN,NOM}$ ,  $I_o = I_{o,max}$ ).

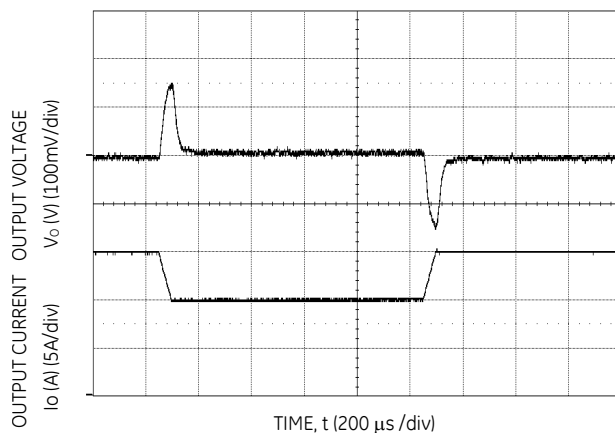


Figure 9. Transient Response to Dynamic Load Change, 0.1A/µS, from 75% to 50% to 75% of full load.

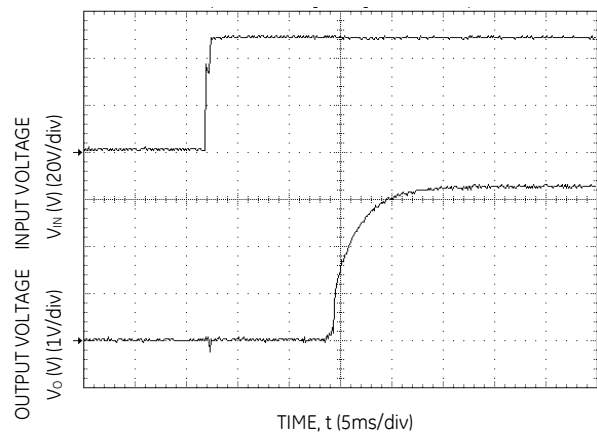
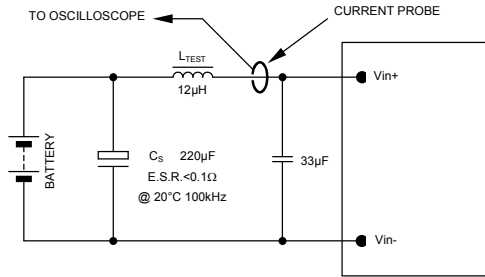


Figure 12. Typical Start-up Using Input Voltage ( $V_{IN} = V_{IN,NOM}$ ,  $I_o = I_{o,max}$ ).

# KNW013/020-88 Series Power Modules; DC-DC Converters

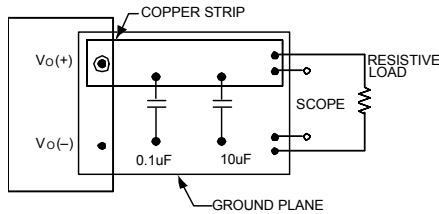
36 – 75Vdc Input; 3.3 to 5.0Vdc Output; 13 to 20A Output Current

## Test Configurations



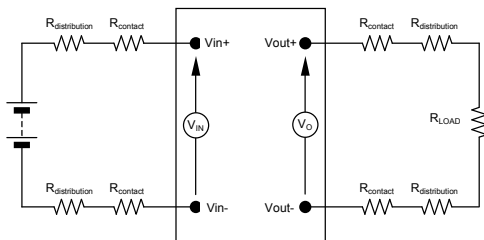
NOTE: Measure input reflected ripple current with a simulated source inductance ( $L_{TEST}$ ) of 12µH. Capacitor  $C_S$  offsets possible battery impedance. Measure current as shown above.

Figure 13. Input Reflected Ripple Current Test Setup.



NOTE: All voltage measurements to be taken at the module terminals, as shown above. If sockets are used then Kelvin connections are required at the module terminals to avoid measurement errors due to socket contact resistance.

Figure 14. Output Ripple and Noise Test Setup.



NOTE: All voltage measurements to be taken at the module terminals, as shown above. If sockets are used then Kelvin connections are required at the module terminals to avoid measurement errors due to socket contact resistance.

Figure 15. Output Voltage and Efficiency Test Setup.

$$\text{Efficiency } \eta = \frac{V_o \cdot I_o}{V_{IN} \cdot I_{IN}} \times 100 \%$$

## Design Considerations

### Input Filtering

The power module should be connected to a low ac-impedance source. Highly inductive source impedance can affect the stability of the power module. For the test configuration in Figure 13, a 33µF electrolytic capacitor (ESR<0.7Ω at 100kHz), mounted close to the power module helps ensure the stability of the unit. Consult the factory for further application guidelines.

### Safety Considerations

For safety-agency approval of the system in which the power module is used, the power module must be installed in compliance with the spacing and separation requirements of the end-use safety agency standard, i.e. UL60950-1, CSA C22.2 No.60950-1, and VDE0805-1(IEC60950-1).

If the input source is non-SELV (ELV or a hazardous voltage greater than 60 Vdc and less than or equal to 75Vdc), for the module's output to be considered as meeting the requirements for safety extra-low voltage (SELV), all of the following must be true:

- The input source is to be provided with reinforced insulation from any other hazardous voltages, including the ac mains.
- One  $V_{IN}$  pin and one  $V_{OUT}$  pin are to be grounded, or both the input and output pins are to be kept floating.
- The input pins of the module are not operator accessible.
- Another SELV reliability test is conducted on the whole system (combination of supply source and subject module), as required by the safety agencies, to verify that under a single fault, hazardous voltages do not appear at the module's output.

**Note:** Do not ground either of the input pins of the module without grounding one of the output pins. This may allow a non-SELV voltage to appear between the output pins and ground.

The power module has extra-low voltage (ELV) outputs when all inputs are ELV.

All flammable materials used in the manufacturing of these modules are rated 94V-0, or tested to the UL60950 A.2 for reduced thickness.

For input voltages exceeding –60 Vdc but less than or equal to –75 Vdc, these converters have been evaluated to the applicable requirements of BASIC INSULATION between secondary DC MAINS DISTRIBUTION input (classified as TNV-2 in Europe) and unearthed SELV outputs.

The input to these units is to be provided with a maximum 5 A time-delay fuse in the ungrounded lead.

# KNW013/020-88 Series Power Modules; DC-DC Converters 2A Digital 36 – 75Vdc Input; 3.3 to 5.0Vdc Output; 13 to 20A Output Current

## Feature Description

### Remote On/Off

Two remote on/off options are available. Positive logic turns the module on during a logic high voltage on the ON/OFF pin, and off during a logic low. Negative logic remote On/Off, device code suffix "1", turns the module off during a logic high and on during a logic low.

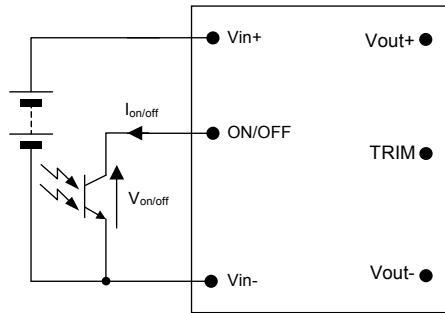


Figure 16. Remote On/Off Implementation.

To turn the power module on and off, the user must supply a switch (open collector or equivalent) to control the voltage ( $V_{on/off}$ ) between the ON/OFF terminal and the  $V_{IN(-)}$  terminal (see Figure 16). Logic low is  $0V \leq V_{on/off} \leq 1.2V$ . The maximum  $I_{on/off}$  during a logic low is 1mA; the switch should be maintaining a logic low level while sinking this current.

During a logic high, the typical maximum  $V_{on/off}$  generated by the module is 15V, and the maximum allowable leakage current at  $V_{on/off} = 5V$  is 1 $\mu$ A.

If not using the remote on/off feature:

- For positive logic, leave the ON/OFF pin open.
- For negative logic, short the ON/OFF pin to  $V_{IN(-)}$ .

### Remote Sense

Remote sense minimizes the effects of distribution losses by regulating the voltage at the remote-sense connections (See Figure 17). The voltage between the remote-sense pins and the output terminals must not exceed the output voltage sense range given in the Feature Specifications table:

$$[V_{o(+)} - V_{o(-)}] - [SENSE(+)- SENSE(-)] \leq 10\% V_{O, set}$$

Although the output voltage can be increased by both the remote sense and by the trim, the maximum increase for the output voltage is not the sum of both. The maximum increase is the larger of either the remote sense or the trim.

The amount of power delivered by the module is defined as the voltage at the output terminals multiplied by the output current. When using remote sense and trim, the output voltage of the module can be increased, which at the same output current would increase the power output of the module. Care should be taken to ensure

that the maximum output power of the module remains at or below the maximum rated power (Maximum rated power =  $V_{O, set} \times I_{o, max}$ ).

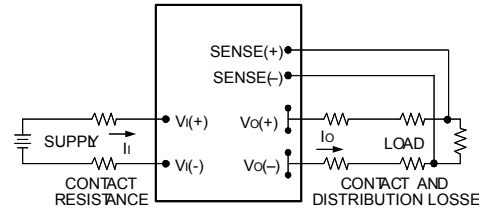


Figure 17. Circuit Configuration for remote sense.

### Input Undervoltage Lockout

At input voltages below the input undervoltage lockout limit, the module operation is disabled. The module will only begin to operate once the input voltage is raised above the undervoltage lockout turn-on threshold,  $V_{UV/ON}$ .

Once operating, the module will continue to operate until the input voltage is taken below the undervoltage turn-off threshold,  $V_{UV/OFF}$ .

### Overtemperature Protection

To provide protection under certain fault conditions, the unit is equipped with a thermal shutdown circuit. The unit will shutdown if the thermal reference point  $T_{ref}$  (Figure 19), exceeds 128-133°C (typical) depending on  $T_A$  and airflow, but the thermal shutdown is not intended as a guarantee that the unit will survive temperatures beyond its rating. The module will automatically restart upon cool-down to a safe temperature.

### Output Overvoltage Protection

The output over voltage protection scheme of the modules has an independent over voltage loop to prevent single point of failure. This protection feature latches in the event of over voltage across the output. Cycling the on/off pin or input voltage resets the latching protection feature. If the auto-restart option (4) is ordered, the module will automatically restart upon an internally programmed time elapsing.

### Overcurrent Protection

To provide protection in a fault (output overload) condition, the unit is equipped with internal current-limiting circuitry and can endure current limiting continuously. At the point of current-limit inception, the unit enters hiccup mode. If the unit is not configured with auto-restart, then it will latch off following the over current condition. The module can be restarted by cycling the dc input power for at least one second, or by toggling the remote on/off signal for at least one second. If the unit is configured with the



## KNW013/020-88 Series Power Modules; DC-DC Converters

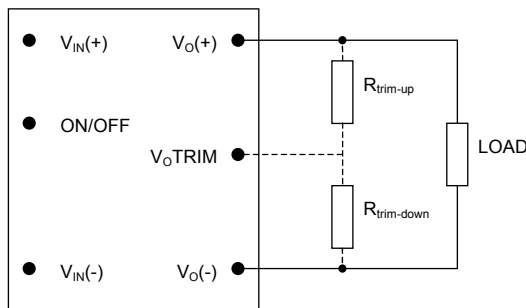
36 – 75Vdc Input; 3.3 to 5.0Vdc Output; 13 to 20A Output Current

**Feature Descriptions** (continued)

auto-restart option (4), it will remain in the hiccup mode as long as the overcurrent condition exists; it operates normally, once the output current is brought back into its specified range. The average output current during hiccup is 10%  $I_{o,max}$ .

**Output Voltage Programming**

Trimming allows the output voltage set point to be increased or decreased. This is accomplished by connecting an external resistor between the TRIM pin and either the  $V_{o}(+)$  pin or the  $V_{o}(-)$  pin.



**Figure 18. Circuit Configuration to Trim Output Voltage.**

Connecting an external resistor ( $R_{trim-down}$ ) between the TRIM pin and the  $V_{o}(-)$  (or Sense(-)) pin decreases the output voltage set point. To maintain set point accuracy, the trim resistor tolerance should be  $\pm 1.0\%$ .

The following equation determines the required external resistor value to obtain a percentage output voltage change of  $\Delta\%$

$$R_{trim-down} = \left[ \frac{511}{\Delta\%} - 10.22 \right] \text{K}\Omega$$

$$\text{Where } \Delta\% = \left( \frac{V_{o,set} - V_{desired}}{V_{o,set}} \right) \times 100$$

For example, to trim-down the output voltage of 3.3V module (KNW020A0F/F1-88) by 8% to 3.036V,  $R_{trim-down}$  is calculated as follows:

$$\begin{aligned} \Delta\% &= 8 \\ R_{trim-down} &= \left[ \frac{511}{8} - 10.22 \right] \text{K}\Omega \\ R_{trim-down} &= 53.6 \text{K}\Omega \end{aligned}$$

Connecting an external resistor ( $R_{trim-up}$ ) between the TRIM pin and the  $V_{o}(+)$  (or Sense (+)) pin increases the output voltage set point. The following equations determine the required external resistor value to obtain a percentage output voltage change of  $\Delta\%$ :

$$R_{trim-up} = \left[ \frac{5.11 \times V_{o,set} \times (100 + \Delta\%)}{1.225 \times \Delta\%} - \frac{511}{\Delta\%} - 10.22 \right] \text{K}\Omega$$

$$\text{Where } \Delta\% = \left( \frac{V_{desired} - V_{o,set}}{V_{o,set}} \right) \times 100$$

For example, to trim-up the output voltage of 5.0V module (KNW013A0A/A1-88) by 5% to 5.25V,  $R_{trim-up}$  is calculated as follows:

$$\begin{aligned} \Delta\% &= 5 \\ R_{trim-up} &= \left[ \frac{5.11 \times 5.0 \times (100 + 5)}{1.225 \times 5} - \frac{511}{5} - 10.22 \right] \text{K}\Omega \\ R_{trim-up} &= 325.6 \text{K}\Omega \end{aligned}$$

The voltage between the  $V_{o}(+)$  and  $V_{o}(-)$  terminals must not exceed the minimum output overvoltage protection value shown in the Feature Specifications table. This limit includes any increase in voltage due to remote-sense compensation and output voltage set-point adjustment trim.

Although the output voltage can be increased by both the remote sense and by the trim, the maximum increase for the output voltage is not the sum of both. The maximum increase is the larger of either the remote sense or the trim. The amount of power delivered by the module is defined as the voltage at the output terminals multiplied by the output current. When using remote sense and trim, the output voltage of the module can be increased, which at the same output current would increase the power output of the module. Care should be taken to ensure that the maximum output power of the module remains at or below the maximum rated power (Maximum rated power =  $V_{o,set} \times I_{o,max}$ ).

**Thermal Considerations**

The power modules operate in a variety of thermal environments; however, sufficient cooling should be provided to help ensure reliable operation.

Considerations include ambient temperature, airflow, module power dissipation, and the need for increased reliability. A reduction in the operating temperature of the module will result in an increase in reliability. The thermal data presented here is based on physical measurements taken in a wind tunnel.

The thermal reference points,  $T_{ref,x}$ , used in the specifications are shown in Figure 19. For reliable operation, the temperature of both  $T_{ref}$  points should not exceed 125°C.

# KNW013/020-88 Series Power Modules; DC-DC Converters 2A Digital 36 – 75Vdc Input; 3.3 to 5.0Vdc Output; 13 to 20A Output Current

## Thermal Considerations (continued)

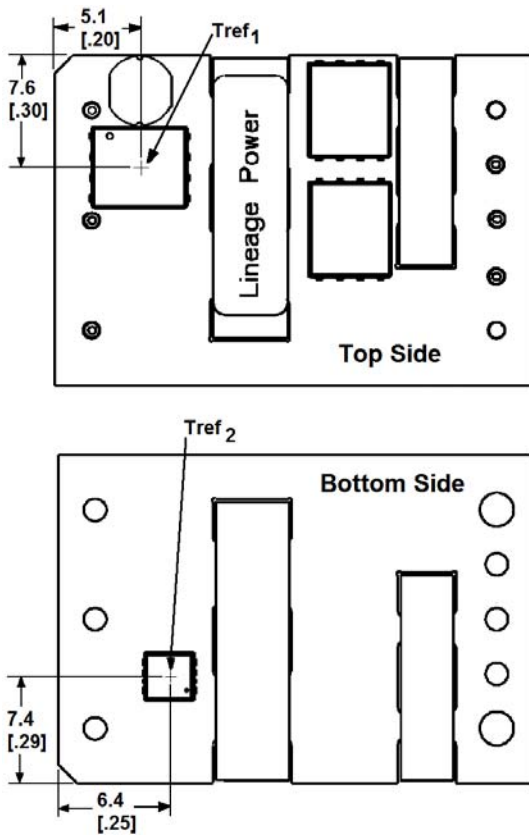


Figure 19. Tref<sub>x</sub> Temperature Measurement Location.

Please refer to the Application Note "Thermal Characterization Process For Open-Frame Board-Mounted Power Modules" for a detailed discussion of thermal aspects including maximum device temperatures.

## EMC Considerations

The KNW series module shall also meet limits of EN55022 Class A with a recommended single stage filter, shown in Figure 20. Please contact your GE Sales Representative for further information.

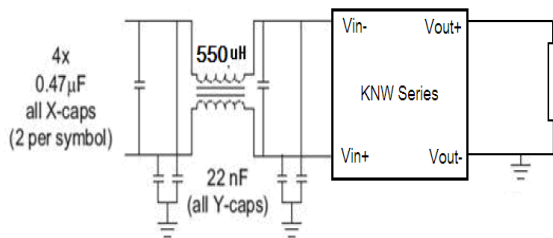


Figure 20. Single stage filter used for test results.

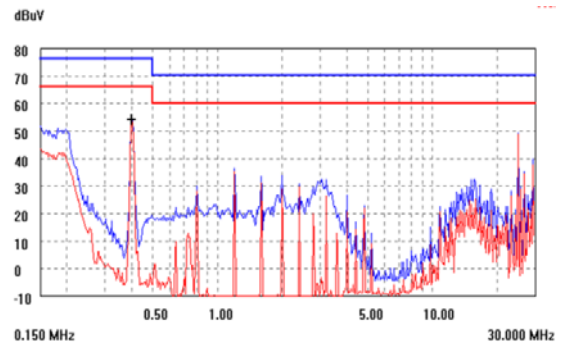


Figure 21. KNW020A0F-88 Quasi Peak Conducted Emissions with EN 55022 Class A limits, Figure 20 filter ( $V_{IN} = V_{IN,NOM}$ ,  $I_o = 0.80 I_{o,max}$ ).

## Layout Considerations

Avoid placing copper areas on the outer layer of the application PCB directly underneath the power module in the keep out areas shown in the Recommended Pad Layout figures. Also avoid placing via interconnects underneath the power module in these keep out areas.

# KNW013/020-88 Series Power Modules; DC-DC Converters

36 – 75Vdc Input; 3.3 to 5.0Vdc Output; 13 to 20A Output Current

## Surface Mount Information

### Pick and Place

The KNW013/020-88 modules use an open frame construction and are designed for a fully automated assembly process. The pick and place locations on the module are the larger magnetic core or the transistor package as shown in Figure 22. The modules are fitted with a label which meets all the requirements for surface mount processing, as well as safety standards, and is able to withstand reflow temperatures of up to 300°C. The label also carries product information such as product code, serial number and the location of manufacture.

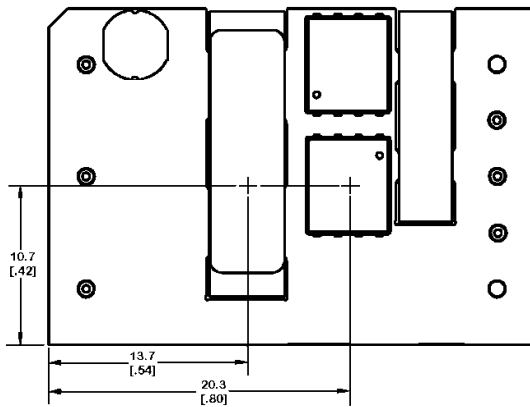


Figure 22. Pick and Place Locations.

### Nozzle Recommendations

The module weight has been kept to a minimum by using open frame construction. Even so, these modules have a relatively large mass when compared to conventional SMT components. Variables such as nozzle size, tip style, vacuum pressure and placement speed should be considered to optimize this process. The recommended nozzle diameter for reliable operation is 5mm. Oblong or oval nozzles up to 11 x 5 mm may also be used within the space available.

### Tin Lead Soldering

The KNW013/020-88 power modules (both non-Z and -Z codes) can be soldered either in a conventional Tin/Lead (Sn/Pb) process. The non-Z version of the KNW013/020-88 modules are RoHS compliant with the lead exception. Lead based solder paste is used in the soldering process during the manufacturing of these modules. These modules can only be soldered in conventional Tin/lead (Sn/Pb) process. It is recommended that the customer review data sheets in order to customize the solder reflow profile for each application board assembly. The following instructions must be observed when soldering these units. Failure to observe these instructions may result in the failure of or cause damage to the modules, and can adversely affect long-term reliability.

In a conventional Tin/Lead (Sn/Pb) solder process peak reflow temperatures are limited to less than 235°C. Typically, the eutectic solder melts at 183°C, wets the land, and subsequently wicks the device connection. Sufficient time must be allowed to fuse the plating on the connection to ensure a reliable solder joint. There are several types of SMT reflow technologies currently used in the industry. These surface mount power modules can be reliably soldered using natural forced convection, IR (radiant infrared), or a combination of convection/IR. For reliable soldering the solder reflow profile should be established by accurately measuring the modules CP connector temperatures.

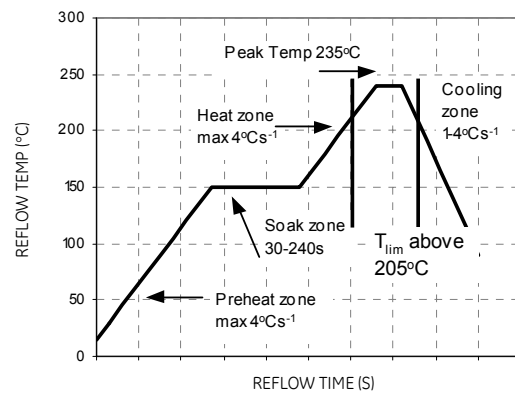


Figure 23. Reflow Profile for Tin/Lead (Sn/Pb) process

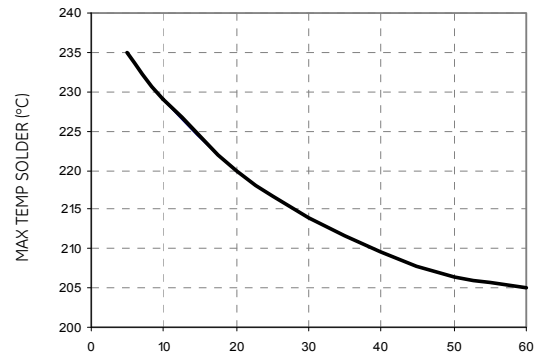


Figure 24. Time Limit Curve Above 205°C for Tin/Lead (Sn/Pb) process

## KNW013/020-88 Series Power Modules; DC-DC Converters 2A Digital 36 – 75Vdc Input; 3.3 to 5.0Vdc Output; 13 to 20A Output Current

### Surface Mount Information (continued)

#### Lead Free Soldering

The -Z version of the KNW013/020-88 modules are lead-free (Pb-free) and RoHS compliant, and are both forward and backward compatible in a Pb-free and a SnPb soldering process. The non-Z version of the KNW013/020-88 modules are RoHS compliant with the lead exception. Lead based solder paste is used in the soldering process during the manufacturing of these modules. These modules can only be soldered in conventional Tin/lead (Sn/Pb) process. Failure to observe the instructions below may result in the failure of or cause damage to the modules and can adversely affect long-term reliability.

#### Pb-free Reflow Profile

Power Systems will comply with J-STD-020 Rev. C (Moisture/Reflow Sensitivity Classification for Nonhermetic Solid State Surface Mount Devices) for both Pb-free solder profiles and MSL classification procedures. This standard provides a recommended forced-air-convection reflow profile based on the volume and thickness of the package (table 4-2). The suggested Pb-free solder paste is Sn/Ag/Cu (SAC). The recommended linear reflow profile using Sn/Ag/Cu solder is shown in Figure 25.

#### MSL Rating

The KNW013/020-88 modules have a MSL rating of 3.

#### Storage and Handling

The recommended storage environment and handling procedures for moisture-sensitive surface mount packages is detailed in J-STD-033 Rev. A (Handling, Packing, Shipping and Use of Moisture/Reflow Sensitive Surface Mount Devices). Moisture barrier bags (MBB) with desiccant are required for MSL ratings of 2 or greater. These sealed packages should not be broken until time of use. Once the original package is broken, the floor life of the product at conditions of  $\leq 30^{\circ}\text{C}$  and 60% relative humidity varies according to the MSL rating (see J-STD-033A). The shelf life for dry packed SMT packages will be a minimum of 12 months from the bag seal date, when stored at the following conditions:  $< 40^{\circ}\text{C}$ ,  $< 90\%$  relative humidity.

#### Post Solder Cleaning and Drying Considerations

Post solder cleaning is usually the final circuit-board assembly process prior to electrical board testing. The result of inadequate cleaning and drying can affect both the reliability of a power module and the testability of

the finished circuit-board assembly. For guidance on appropriate soldering, cleaning and drying procedures, refer to *GE Board Mounted Power Modules: Soldering and Cleaning* Application Note (AN04-001).

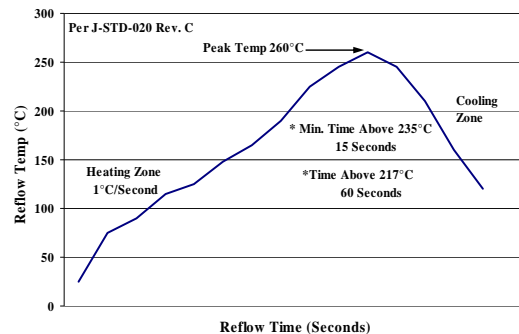


Figure 25. Recommended linear reflow profile using Sn/Ag/Cu solder.

### Through-Hole Lead-Free Soldering Information

The RoHS-compliant through-hole products use the SAC (Sn/Ag/Cu) Pb-free solder and RoHS-compliant components. They are designed to be processed through single or dual wave soldering machines. The pins have an RoHS-compliant finish that is compatible with both Pb and Pb-free wave soldering processes. A maximum preheat rate of  $3^{\circ}\text{C/s}$  is suggested. The wave preheat process should be such that the temperature of the power module board is kept below  $210^{\circ}\text{C}$ . For Pb solder, the recommended pot temperature is  $260^{\circ}\text{C}$ , and, for Pb-free solder, the recommended pot temperature is  $270^{\circ}\text{C}$  max. Not all RoHS-compliant through-hole products can be processed with paste-through-hole Pb or Pb-free reflow process. If additional information is needed, please consult with your GE representative for more details.

# KNW013/020-88 Series Power Modules; DC-DC Converters

36 – 75Vdc Input; 3.3 to 5.0Vdc Output; 13 to 20A Output Current

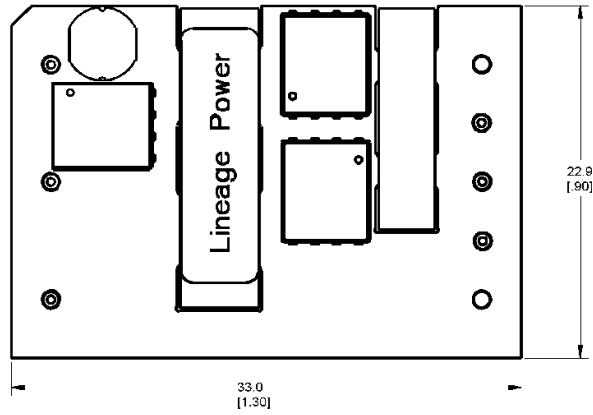
## Mechanical Outline for Surface Mount Module

Dimensions are in millimeters and [inches].

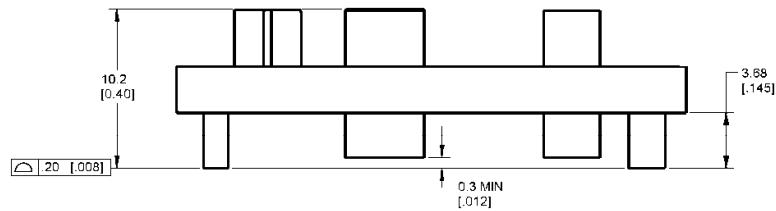
Tolerances: x.x mm ± 0.5 mm [x.xx in. ± 0.02 in.] (unless otherwise indicated)

x.xx mm ± 0.25 mm [x.xxx in ± 0.010 in.]

Top View

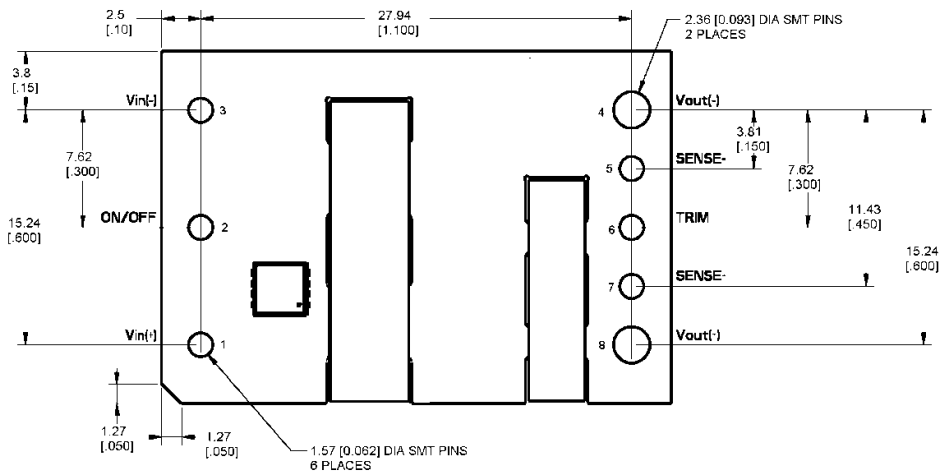


Side View



Bottom View

| PIN | FUNCTION |
|-----|----------|
| 1   | VIN(+)   |
| 2   | On/Off   |
| 3   | VIN(-)   |
| 4   | Vo(-)    |
| 5   | Sense(-) |
| 6   | Trim     |
| 7   | Sense(+) |
| 8   | Vo(+)    |



# KNW013/020-88 Series Power Modules; DC-DC Converters 2A Digital 36 – 75Vdc Input; 3.3 to 5.0Vdc Output; 13 to 20A Output Current

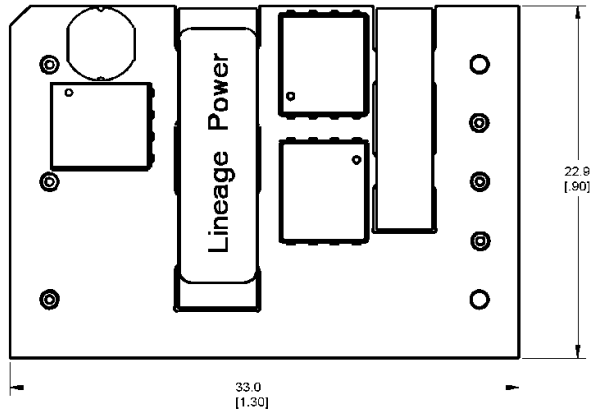
## Mechanical Outline for Through-Hole Module

Dimensions are in millimeters and [inches].

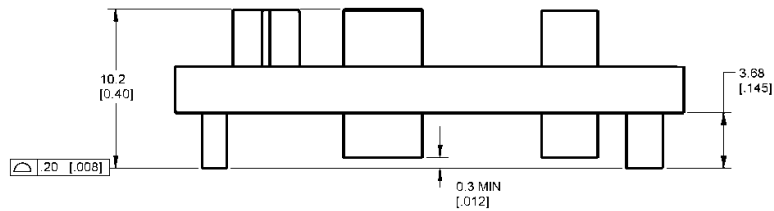
Tolerances: x.x mm ± 0.5 mm [x.xx in. ± 0.02 in.] (unless otherwise indicated)

x.xx mm ± 0.25 mm [x.xxx in ± 0.010 in.]

Top View

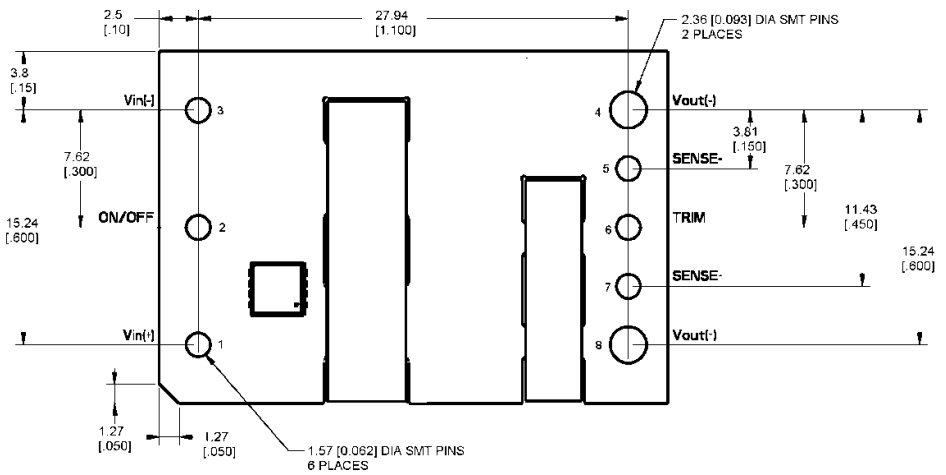


Side View



Bottom View

| PIN | FUNCTION |
|-----|----------|
| 1   | VIN(+)   |
| 2   | On/Off   |
| 3   | VIN(-)   |
| 4   | Vo(-)    |
| 5   | Sense(-) |
| 6   | Trim     |
| 7   | Sense(+) |
| 8   | Vo(+)    |

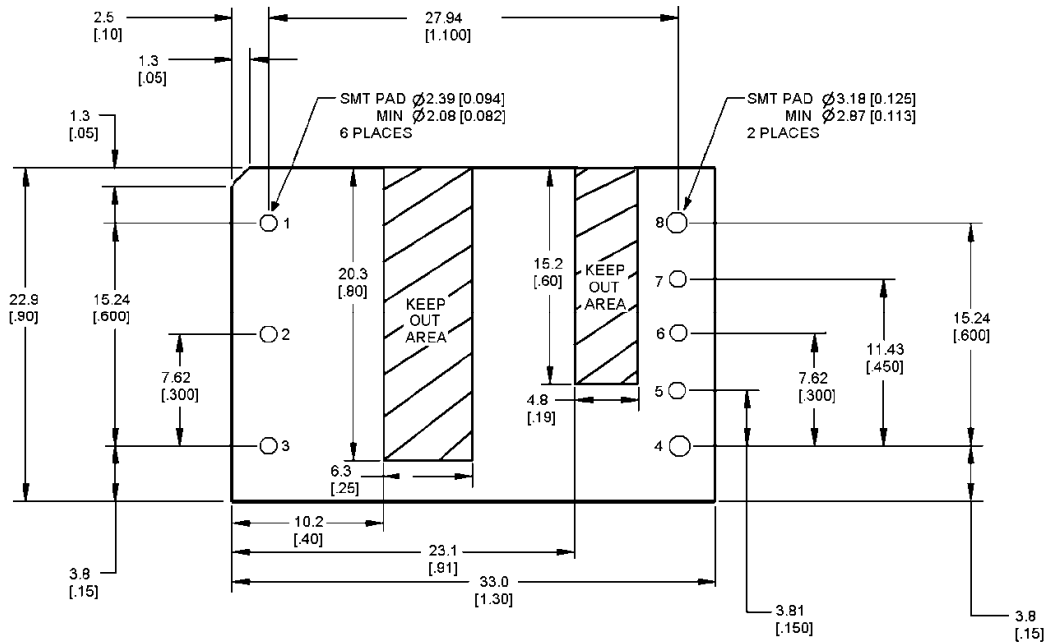


# KNW013/020-88 Series Power Modules; DC-DC Converters

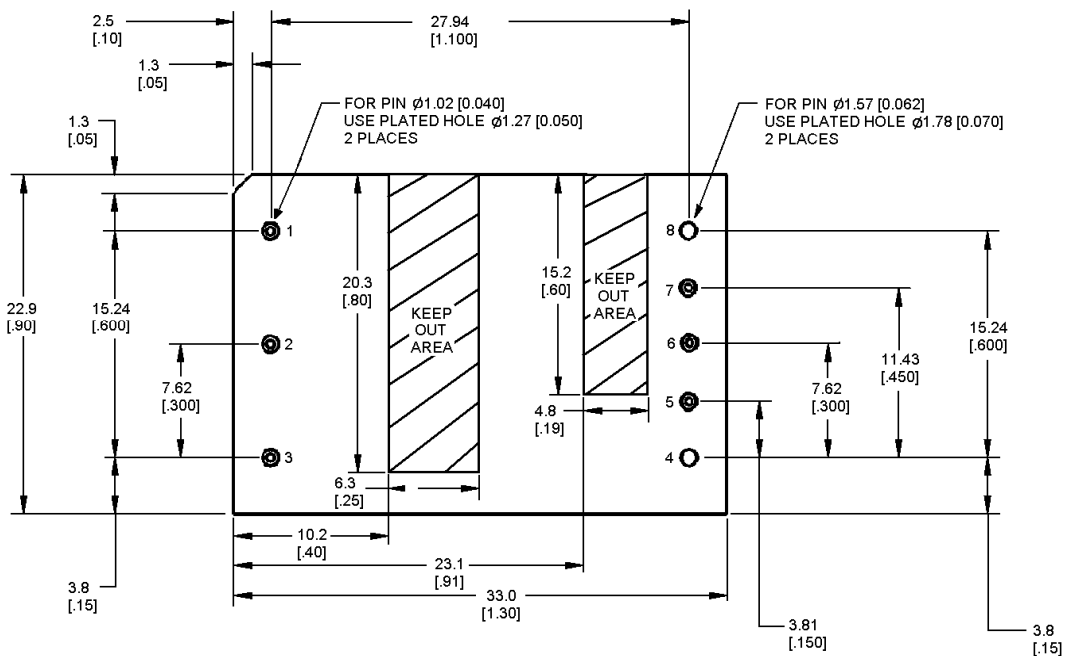
36 – 75Vdc Input; 3.3 to 5.0Vdc Output; 13 to 20A Output Current

## Recommended Pad Layout

Dimensions are in and millimeters [inches].  
 Tolerances: x.x mm ± 0.5 mm [x.xx in. ± 0.02 in.] (unless otherwise indicated)  
 x.xx mm ± 0.25 mm [x.xxx in ± 0.010 in.]



SMT Recommended Pad Layout (Component Side View)



TH Recommended Pad Layout (Component Side View)

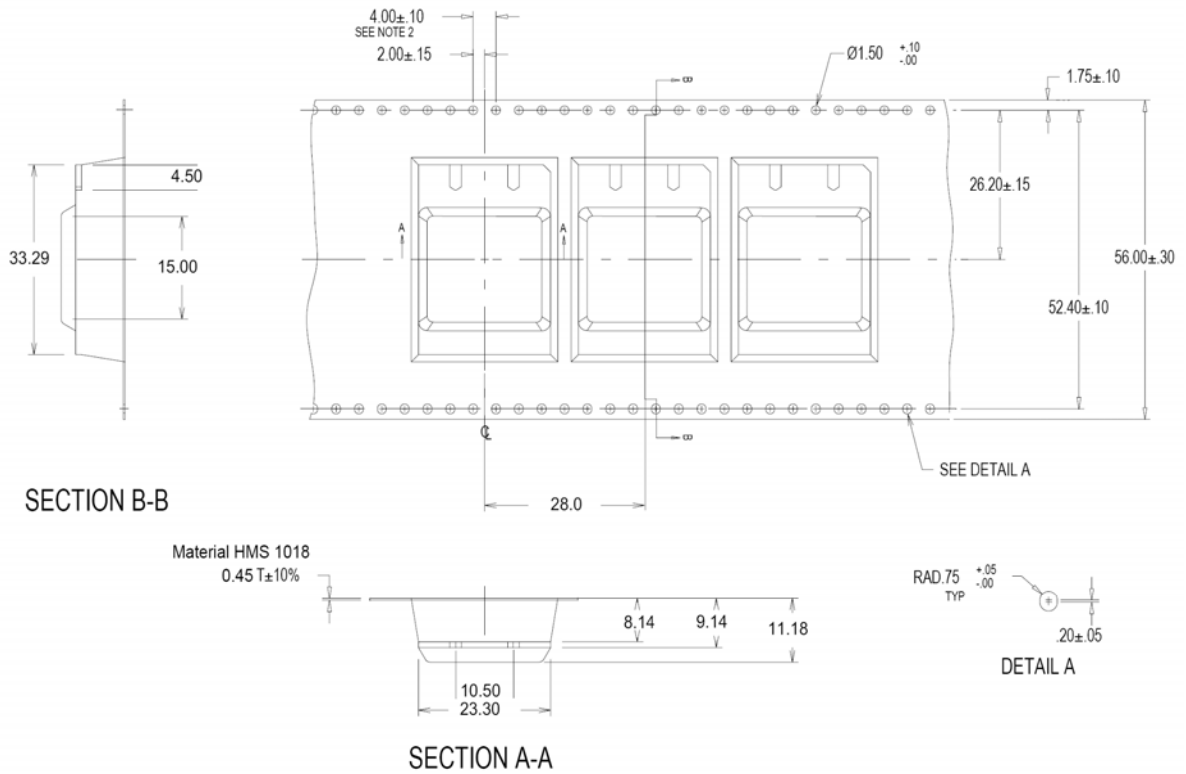
# KNW013/020-88 Series Power Modules; DC-DC Converters 2A Digital 36 – 75Vdc Input; 3.3 to 5.0Vdc Output; 13 to 20A Output Current

## Packaging Details

The Sixteenth-brick SMT versions are supplied in tape & reel as standard. Details of tape dimensions are shown below. Modules are shipped in quantities of 140 modules per reel.

### Tape Dimensions

Dimensions are in millimeters.





## KNW013/020-88 Series Power Modules; DC-DC Converters

36 – 75Vdc Input; 3.3 to 5.0Vdc Output; 13 to 20A Output Current

### Ordering Information

Table 1. Device Code

| Product Codes     | Input Voltage  | Output Voltage | Output Current | On/Off Logic | Connector Type | Comcode   |
|-------------------|----------------|----------------|----------------|--------------|----------------|-----------|
| KNW013A0A4-88SRZ  | 48V (36-75Vdc) | 5.0V           | 13A            | Positive     | Surface mount  | 150027817 |
| KNW013A0A41-88SRZ | 48V (36-75Vdc) | 5.0V           | 13A            | Negative     | Surface mount  | 150027812 |
| KNW013A0A41-88Z   | 48V (36-75Vdc) | 5.0V           | 13A            | Negative     | Through hole   | 150027809 |
| KNW013A0A641-88Z  | 48V (36-75Vdc) | 5.0V           | 13A            | Negative     | Through hole   | 150027816 |
| KNW013A0A841-88Z  | 48V (36-75Vdc) | 5.0V           | 13A            | Negative     | Through hole   | 150027811 |
| KNW020A0F1-88SRZ  | 48V (36-75Vdc) | 3.3V           | 20A            | Negative     | Surface mount  | 150027818 |
| KNW020A0F41-88SRZ | 48V (36-75Vdc) | 3.3V           | 20A            | Negative     | Surface mount  | 150027810 |
| KNW020A0F41-88Z   | 48V (36-75Vdc) | 3.3V           | 20A            | Negative     | Through hole   | 150027806 |
| KNW020A0F641-88Z  | 48V (36-75Vdc) | 3.3V           | 20A            | Negative     | Through hole   | 150027807 |
| KNW020A0F841-88Z  | 48V (36-75Vdc) | 3.3V           | 20A            | Negative     | Through hole   | 150027814 |

Table 2. Device Coding Scheme and Options

|                | Characteristic                       | Character and Position                  | Definition  |
|----------------|--------------------------------------|---|---|
| Ratings        | Form Factor                          | K                                       | K = Sixteenth Brick   |
|                | Family Designator                    | N                                       | N=Family Designator   |
|                | Input Voltage                        | W                                       | W = Wide Range, 36V-75V   |
|                | Output Current                       | 013A0                                   | 013A0 = 013.0 Amps Maximum Output Current   |
|                |                                      | 020A0                                   | 020A0 = 020.0 Amps Maximum Output Current   |
| Output Voltage | A                                    | A = 5.0V nominal                        |   |
|                | F                                    | F = 3.3V nominal                        |   |
| Options        | Pin Length                           | 6                                       | Omit = Default Pin Length shown in Mechanical Outline Figures<br>6 = Pin Length: 3.68 mm ± 0.25mm , (0.145 in. ± 0.010 in.) |
|                |                                      | 8                                       | 8 = Pin Length: 2.79 mm ± 0.25mm , (0.110 in. ± 0.010 in.)  |
|                | Action following Protective Shutdown | 4                                       | Omit = Latching Mode<br>4 = Auto-restart following shutdown (Overcurrent/Overvoltage)                                       |
|                | On/Off Logic                         |   | Omit = Positive Logic   |
|                |                                      | 1                                       | 1 = Negative Logic  |
|                | Revision                             | 88                                      | 88 = Updated Opto construction  |
|                | Mechanical Features                  | SR                                      | Omit = Through Hole Pins<br>S = Surface mount connections; R = Tape/reel packaging, included with S option                  |
|                | Customer Specific                    | XY                                      | XY = Customer Specific Modified Code, Omit for Standard Code  |
| RoHS           |                                      | Omit = RoHS 5/6, Lead Based Solder Used |   |
|                | Z                                    | Z = RoHS 6/6 Compliant, Lead free       |   |

## Contact Us

For more information, call us at

USA/Canada:

**+1 877 546 3243**, or +1 972 244 9288

Asia-Pacific:

+86.021.54279977\*808

Europe, Middle-East and Africa:

+49.89.878067-280



[www.gecriticalpower.com](http://www.gecriticalpower.com)

GE Critical Power reserves the right to make changes to the product(s) or information contained herein without notice, and no liability is assumed as a result of their use or application. No rights under any patent accompany the sale of any such product(s) or information.



Компания «ЭлектроПласт» предлагает заключение долгосрочных отношений при поставках импортных электронных компонентов на взаимовыгодных условиях!

Наши преимущества:

- Оперативные поставки широкого спектра электронных компонентов отечественного и импортного производства напрямую от производителей и с крупнейших мировых складов;
- Поставка более 17-ти миллионов наименований электронных компонентов;
- Поставка сложных, дефицитных, либо снятых с производства позиций;
- Оперативные сроки поставки под заказ (от 5 рабочих дней);
- Экспресс доставка в любую точку России;
- Техническая поддержка проекта, помощь в подборе аналогов, поставка прототипов;
- Система менеджмента качества сертифицирована по Международному стандарту ISO 9001;
- Лицензия ФСБ на осуществление работ с использованием сведений, составляющих государственную тайну;
- Поставка специализированных компонентов (Xilinx, Altera, Analog Devices, Intersil, Interpoint, Microsemi, Aeroflex, Peregrine, Syfer, Eurofarad, Texas Instrument, Miteq, Cobham, E2V, MA-COM, Hittite, Mini-Circuits, General Dynamics и др.);

Помимо этого, одним из направлений компании «ЭлектроПласт» является направление «Источники питания». Мы предлагаем Вам помощь Конструкторского отдела:

- Подбор оптимального решения, техническое обоснование при выборе компонента;
- Подбор аналогов;
- Консультации по применению компонента;
- Поставка образцов и прототипов;
- Техническая поддержка проекта;
- Защита от снятия компонента с производства.



#### Как с нами связаться

**Телефон:** 8 (812) 309 58 32 (многоканальный)

**Факс:** 8 (812) 320-02-42

**Электронная почта:** [org@eplast1.ru](mailto:org@eplast1.ru)

**Адрес:** 198099, г. Санкт-Петербург, ул. Калинина, дом 2, корпус 4, литера А.