

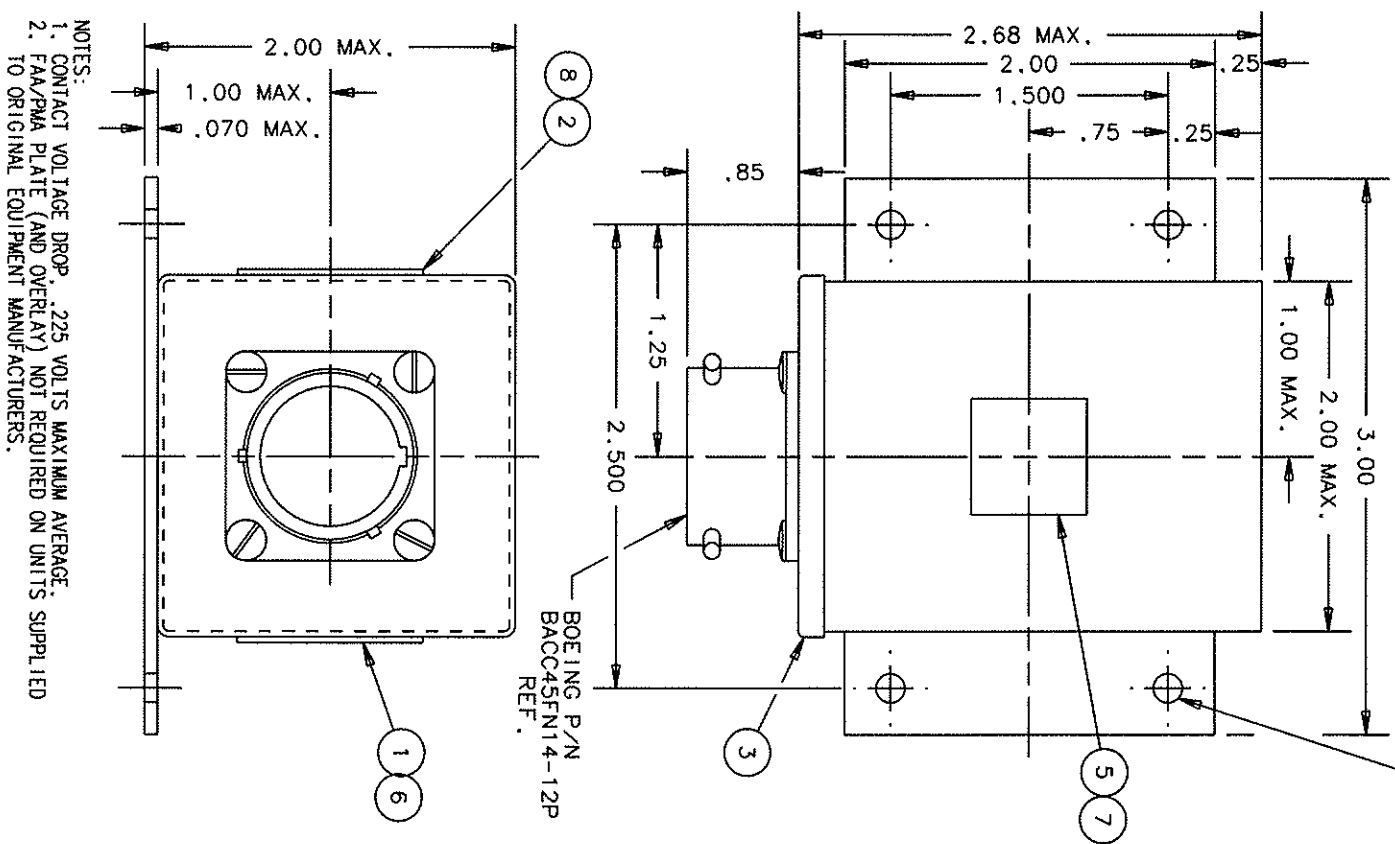
FAA-PMA

REV.	DESCRIPTION	DATE	APPROVED
1	UPDATE SPECIFICATIONS	93/03/10	W.S.
2	ADDED TOLERANCES	94/06/29	R.S.
3	NOTE 2 ADDED	98/05/04	R.S.
4	BOEING P/N* & *100,000 MECH OPER* ADDED, 3 AXIS WAS AXES	99/05/24	RS

REVISIONS

RELEASED

.156 +.010 DIA. HOLE  
4 MITG. HOLES

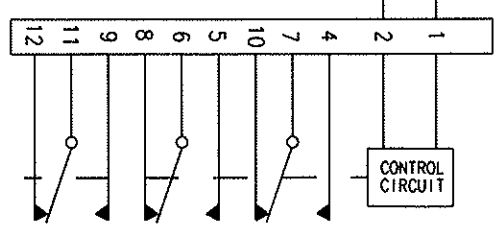


NOTES:  
1. CONTACT VOLTAGE DROP, .225 VOLTS MAXIMUM AVERAGE.  
2. FAA/PMA PLATE (AND OVERLAY) NOT REQUIRED ON UNITS SUPPLIED TO ORIGINAL EQUIPMENT MANUFACTURERS.

ELECTRICAL  
CONTACT FORM  
CONTACT RATING (AMPS PER POLE AT 155 VAC AND 28 VDC)  
CONTACT LIFE  
CONTACT BOUNCE  
DUTY CYCLE  
NOM. OPERATING VOLTAGE  
MAX. OPERATING VOLTAGE  
OPERATING FREQUENCY  
PICK-UP VOLTAGE  
PICK-UP TIME  
DROP-OUT VOLTAGE  
DROP-OUT TIME DELAY

3PDT  
RESISTIVE INDUCTIVE MOTOR LAMP  
10 8 4 2  
100,000 OPERATIONS, MECHANICAL, MIN.  
100,000 OPERATIONS, MINIMUM AT RATED RESISTIVE LOAD  
3 MILLISECONDS MAXIMUM  
CONTINUOUS  
115 VAC, RMS L-N  
122 VAC, RMS L-N  
400 ± 20 HZ.  
109 ± 2 VRMS  
70 MILLISECONDS MAXIMUM  
104 ± 2 VRMS  
200-400 MILLISECONDS, WHEN THE RELAY IS IN THE ENERGIZED POSITION AND THE VOLTAGE DROPS BELOW 104 ± 2 VRMS AND ABOVE 88 ± 4 VRMS, THE RELAY WILL RE-MAIN ENERGIZED FOR 200-400 MILLI-SECONDS BEFORE DE-ENERGIZING, WHEN THE VOLTAGE DROPS BELOW 88 ± 4 VRMS NO TIME DELAY IS REQUIRED, WHEN THE VOLTAGE DROPS TO 30 VOLTS OR LESS, THE RELAY WILL DE-ENERGIZE IN 50 MILLISECONDS MAXIMUM.  
PER MIL-STD-704A  
100 MILLIAMPS MAX. AT 25°C  
1000VRMS, 60 HZ.

1000 MEGOHMS, MINIMUM, AT 500 VDC  
-55°C TO +85°C (OPERATING)  
-55°C TO +125°C (NON-OPERATING)  
PER BOEING SPECIFICATION  
DE-44599 CATEGORY C ZONE 1  
30 G'S, 11 MILLISECOND, 1/2 SINE,  
3 AXIS  
20 G'S IN ANY AXIS  
0 TO 80,000 FEET  
10 OUNCES MAX.  
ALUMINUM METAL CAN, MOUNTING FLANGES AND COVER, SENSOR POTTED  
BLACK LAQUER PAINT  
SOLDER SEALED COVER, HERMETIC SEALED CONTACTS



INPUT VOLTAGE TRANSIENTS  
OPERATING CURRENT  
DIELECTRIC WITHSTANDING  
VOLTAGE  
INSULATION RESISTANCE  
ENVIRONMENTAL  
AMBIENT TEMPERATURE  
VIBRATION  
SHOCK  
ACCELERATION  
ALTITUDE  
MECHANICAL  
WEIGHT  
CONSTRUCTION  
SEAL

8	7	6	5	3	1
1	1	1	1	1	1
39529-038	39529-047	39529-073	39529-073	39529-073	39529-073
OVERLAY	OVERLAY	OVERLAY	OVERLAY	OVERLAY	OVERLAY
PLATE - FAA / PMA	PLATE - FAA / PMA	PLATE - FAA / PMA	PLATE - FAA / PMA	PLATE - FAA / PMA	PLATE - FAA / PMA
RELAY ASSEMBLY - PRIMARY	RELAY ASSEMBLY - PRIMARY	RELAY ASSEMBLY - PRIMARY	RELAY ASSEMBLY - PRIMARY	RELAY ASSEMBLY - PRIMARY	RELAY ASSEMBLY - PRIMARY
PLATE - WIRING DIAGRAM	PLATE - WIRING DIAGRAM	PLATE - WIRING DIAGRAM	PLATE - WIRING DIAGRAM	PLATE - WIRING DIAGRAM	PLATE - WIRING DIAGRAM
PLATE - NAME (LOCATION OPT.)	PLATE - NAME (LOCATION OPT.)	PLATE - NAME (LOCATION OPT.)	PLATE - NAME (LOCATION OPT.)	PLATE - NAME (LOCATION OPT.)	PLATE - NAME (LOCATION OPT.)
1	1	1	1	1	1
16043-056	16043-056	16043-056	16043-056	16043-056	16043-056
NON-DESCRIPTION OR	NON-DESCRIPTION OR	NON-DESCRIPTION OR	NON-DESCRIPTION OR	NON-DESCRIPTION OR	NON-DESCRIPTION OR
DESCRIPTION	DESCRIPTION	DESCRIPTION	DESCRIPTION	DESCRIPTION	DESCRIPTION
NON-DESCRIPTION OR	NON-DESCRIPTION OR	NON-DESCRIPTION OR	NON-DESCRIPTION OR	NON-DESCRIPTION OR	NON-DESCRIPTION OR
DESCRIPTION	DESCRIPTION	DESCRIPTION	DESCRIPTION	DESCRIPTION	DESCRIPTION
NON-DESCRIPTION OR	NON-DESCRIPTION OR	NON-DESCRIPTION OR	NON-DESCRIPTION OR	NON-DESCRIPTION OR	NON-DESCRIPTION OR
DESCRIPTION	DESCRIPTION	DESCRIPTION	DESCRIPTION	DESCRIPTION	DESCRIPTION

8	7	6	5	3	1
1	1	1	1	1	1
39529-038	39529-047	39529-073	39529-073	39529-073	39529-073
OVERLAY	OVERLAY	OVERLAY	OVERLAY	OVERLAY	OVERLAY
PLATE - FAA / PMA	PLATE - FAA / PMA	PLATE - FAA / PMA	PLATE - FAA / PMA	PLATE - FAA / PMA	PLATE - FAA / PMA
RELAY ASSEMBLY - PRIMARY	RELAY ASSEMBLY - PRIMARY	RELAY ASSEMBLY - PRIMARY	RELAY ASSEMBLY - PRIMARY	RELAY ASSEMBLY - PRIMARY	RELAY ASSEMBLY - PRIMARY
PLATE - WIRING DIAGRAM	PLATE - WIRING DIAGRAM	PLATE - WIRING DIAGRAM	PLATE - WIRING DIAGRAM	PLATE - WIRING DIAGRAM	PLATE - WIRING DIAGRAM
PLATE - NAME (LOCATION OPT.)	PLATE - NAME (LOCATION OPT.)	PLATE - NAME (LOCATION OPT.)	PLATE - NAME (LOCATION OPT.)	PLATE - NAME (LOCATION OPT.)	PLATE - NAME (LOCATION OPT.)
1	1	1	1	1	1
16043-056	16043-056	16043-056	16043-056	16043-056	16043-056
NON-DESCRIPTION OR	NON-DESCRIPTION OR	NON-DESCRIPTION OR	NON-DESCRIPTION OR	NON-DESCRIPTION OR	NON-DESCRIPTION OR
DESCRIPTION	DESCRIPTION	DESCRIPTION	DESCRIPTION	DESCRIPTION	DESCRIPTION
NON-DESCRIPTION OR	NON-DESCRIPTION OR	NON-DESCRIPTION OR	NON-DESCRIPTION OR	NON-DESCRIPTION OR	NON-DESCRIPTION OR
DESCRIPTION	DESCRIPTION	DESCRIPTION	DESCRIPTION	DESCRIPTION	DESCRIPTION

8	7	6	5	3	1
1	1	1	1	1	1
39529-038	39529-047	39529-073	39529-073	39529-073	39529-073
OVERLAY	OVERLAY	OVERLAY	OVERLAY	OVERLAY	OVERLAY
PLATE - FAA / PMA	PLATE - FAA / PMA	PLATE - FAA / PMA	PLATE - FAA / PMA	PLATE - FAA / PMA	PLATE - FAA / PMA
RELAY ASSEMBLY - PRIMARY	RELAY ASSEMBLY - PRIMARY	RELAY ASSEMBLY - PRIMARY	RELAY ASSEMBLY - PRIMARY	RELAY ASSEMBLY - PRIMARY	RELAY ASSEMBLY - PRIMARY
PLATE - WIRING DIAGRAM	PLATE - WIRING DIAGRAM	PLATE - WIRING DIAGRAM	PLATE - WIRING DIAGRAM	PLATE - WIRING DIAGRAM	PLATE - WIRING DIAGRAM
PLATE - NAME (LOCATION OPT.)	PLATE - NAME (LOCATION OPT.)	PLATE - NAME (LOCATION OPT.)	PLATE - NAME (LOCATION OPT.)	PLATE - NAME (LOCATION OPT.)	PLATE - NAME (LOCATION OPT.)
1	1	1	1	1	1
16043-056	16043-056	16043-056	16043-056	16043-056	16043-056
NON-DESCRIPTION OR	NON-DESCRIPTION OR	NON-DESCRIPTION OR	NON-DESCRIPTION OR	NON-DESCRIPTION OR	NON-DESCRIPTION OR
DESCRIPTION	DESCRIPTION	DESCRIPTION	DESCRIPTION	DESCRIPTION	DESCRIPTION
NON-DESCRIPTION OR	NON-DESCRIPTION OR	NON-DESCRIPTION OR	NON-DESCRIPTION OR	NON-DESCRIPTION OR	NON-DESCRIPTION OR
DESCRIPTION	DESCRIPTION	DESCRIPTION	DESCRIPTION	DESCRIPTION	DESCRIPTION

HARTMAN ELECTRICAL MANUFACTURING  
MANSFIELD, OHIO

RELAY-VOLTAGE SENSING

093

DR BY	RS	99/05/27
CHK BY	RS	99/05/27
ENGR	RS	99/05/27
MF G	RS	99/05/27
CONTR NO.		
GOVT APPVAL		

SIZE	CODE IDENT	DWG NO.
C	74063	E-329E
SCALE	NONE	SHEET



Компания «ЭлектроПласт» предлагает заключение долгосрочных отношений при поставках импортных электронных компонентов на взаимовыгодных условиях!

Наши преимущества:

- Оперативные поставки широкого спектра электронных компонентов отечественного и импортного производства напрямую от производителей и с крупнейших мировых складов;
- Поставка более 17-ти миллионов наименований электронных компонентов;
- Поставка сложных, дефицитных, либо снятых с производства позиций;
- Оперативные сроки поставки под заказ (от 5 рабочих дней);
- Экспресс доставка в любую точку России;
- Техническая поддержка проекта, помощь в подборе аналогов, поставка прототипов;
- Система менеджмента качества сертифицирована по Международному стандарту ISO 9001;
- Лицензия ФСБ на осуществление работ с использованием сведений, составляющих государственную тайну;
- Поставка специализированных компонентов (Xilinx, Altera, Analog Devices, Intersil, Interpoint, Microsemi, Aeroflex, Peregrine, Syfer, Eurofarad, Texas Instrument, Miteq, Cobham, E2V, MA-COM, Hittite, Mini-Circuits, General Dynamics и др.);

Помимо этого, одним из направлений компании «ЭлектроПласт» является направление «Источники питания». Мы предлагаем Вам помощь Конструкторского отдела:

- Подбор оптимального решения, техническое обоснование при выборе компонента;
- Подбор аналогов;
- Консультации по применению компонента;
- Поставка образцов и прототипов;
- Техническая поддержка проекта;
- Защита от снятия компонента с производства.



#### Как с нами связаться

**Телефон:** 8 (812) 309 58 32 (многоканальный)

**Факс:** 8 (812) 320-02-42

**Электронная почта:** [org@eplast1.ru](mailto:org@eplast1.ru)

**Адрес:** 198099, г. Санкт-Петербург, ул. Калинина, дом 2, корпус 4, литера А.