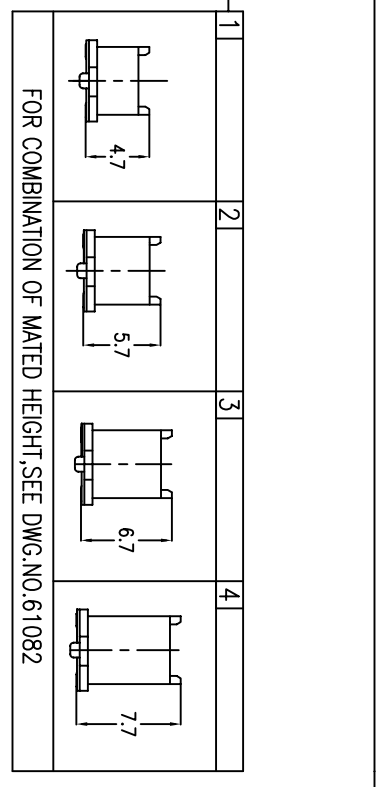


10069525 -

| NUMBER OF POSITIONS |
|---------------------|
| 04 |
| 06 |
| 08 |
| 10 |
| 12 |
| 14 |
| 16 |
| 18 |
| 20 |



| PACKAGING | |
|-----------|----------------------|
| 0 | TUBE WITHOUT CAP |
| 2 | TAPE & REEL WITH CAP |
| 9 | TUBE WITH CAP |

| POLARIZATION PEG | | HOLD DOWN | |
|------------------|-----|-----------|----|
| 0 | YES | | NO |
| 2 | NO | | NO |

| PLATING ON CONTACT AREA. | | EMPTY | |
|--------------------------|---|-------|----------------|
| 0 | GOLD 0.2 um MIN. / TIN LEAD SOLDER | | |
| 1 | PALLADIUM-NICKEL 0.76 umMIN. WITH GOLD FLASH (0.1 um MIN.) / TIN LEAD SOLDER | | EMPTY |
| 4 | GOLD 0.2 um MIN. / MATT PURE TIN ON SOLDER TAIL (LEAD FREE PLATING) | | LF (note 6&&.) |
| 5 | GOLD 0.38 um / MATT PURE TIN ON SOLDER TAIL (LEAD FREE PLATING) | | LF (note 6.) |
| 6 | PALLADIUM-NICKEL 0.76 umMIN. WITH GOLD FLASH (0.1 um MIN.) / MATT PURE TIN ON SOLDER TAIL (LEAD FREE PLATING) | | LF (note 6&&.) |

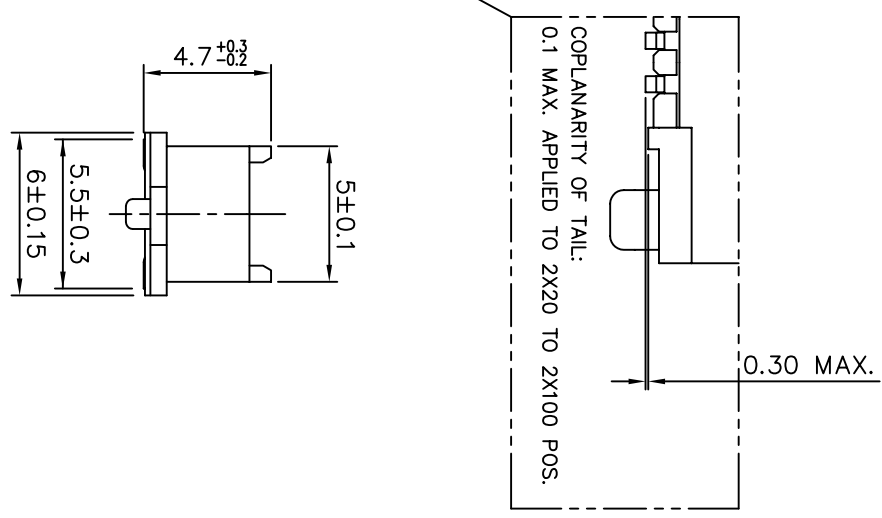
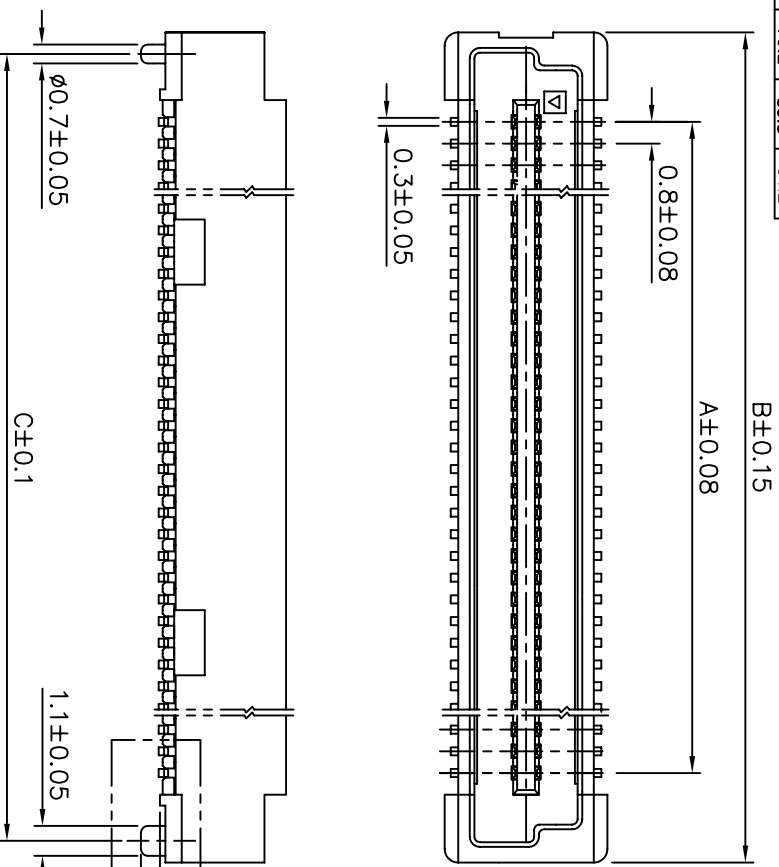
- NOTES:
- MATERIAL:
HOUSING: G.F.LCP UL94V-0
TERMINAL: BRASS
 - PLATING:
AS TABLE SHOW.
 - SEE GS-12-148 FOR PRODUCT SPECIFICATION.
 - SEE GS-14-551 AND GS-14-816 FOR PACKAGING SPECIFICATION.
 - PACKING OPTION 3: "CUSTOMER-SPECIFIC; LIMITED TO CERTAIN SIZES" PACKING OPTION 2: NOT ALL SIZES AVAILABLE; CHECK WITH FACTORY"
 - THIS PRODUCT MEETS EUROPEAN UNION DIRECTIVES AND OTHER COUNTRY REGULATIONS AS DESCRIBED IN GS-22-008
 - THE HOUSING WILL WITHSTAND EXPOSURE TO 260°C PEAK TEMPERATURE FOR 10 SECONDS IN A CONVECTION, INFRA-RED OR VAPOR PHASE REFLOW OVEN.
 - PLATING OPTION '4' IS LEADFREE ALTERNATIVE FOR OPTION '0', AND OPTION '6' IS LEADFREE ALTERNATIVE FOR OPTION '1'.

- THIS PARTNUMBER IS ONLY CATER FOR SPECIAL CUSTOMER REQUIREMENTS OF COPLANARITY OF 0.1 FOR ALL POSITIONS.
- A Δ SYMBOL WILL BE NEXT TO ANY DIMENSION, VIEW, OR NOTE WHICH HAS BEEN MODIFIED WITH THE CURRENT DRAWING REVISION.

| mat'l. code | | surface | | tolerance | | projection | | product family | |
|-------------|----------|---------|------------|-----------|------------|------------|-----------|----------------------|--------------|
| ltr | ecrn no | dr | date | ASMEY14.5 | ASME Y14.5 | MM | MM | title | sheet no |
| A | S06-0286 | MCH | 2006-08-25 | angles | .XX±0.20 | | | 0.8mm BOARD TO BOARD | sheet 1 of 6 |
| B | S06-0316 | MCH | 2006-08-25 | °±2' | .XXX±0.15 | | | PLUG ASS'y | A4 |
| C | S09-0216 | MCH | 2009-06-26 | °±2' | .XXX±0.10 | | | | |
| D | S10-0086 | MCH | 2010-03-26 | dr | M.CHEONG | 2006-08-25 | scale 3:1 | | |
| | | | | enjr | M.CHEONG | 2006-08-25 | | | |
| | | | | chr | M.CHEONG | 2010-03-26 | | | |
| | | | | pppd | JOEY NG | 2010-03-26 | | | |
| Sheet | revision | D | B | B | B | B | B | | |
| Index | sheet | 1 | 2 | 3 | 4 | 5 | 6 | | |



| PRODUCT NO. | NUMBER OF POSITIONS | DIMENSION | | |
|-----------------|---------------------|-----------|------|------|
| | | A | B | C |
| 10059525-041*** | 2 X20 | 15.2 | 21.8 | 20.2 |
| 10059525-061*** | 2 X30 | 23.2 | 29.8 | 28.2 |
| 10059525-081*** | 2 X40 | 31.2 | 37.8 | 36.2 |
| 10059525-101*** | 2 X50 | 39.2 | 45.8 | 44.2 |
| 10059525-121*** | 2 X60 | 47.2 | 53.8 | 52.2 |
| 10059525-141*** | 2 X70 | 55.2 | 61.8 | 60.2 |
| 10059525-161*** | 2 X80 | 63.2 | 69.8 | 68.2 |
| 10059525-181*** | 2 X90 | 71.2 | 77.8 | 76.2 |
| 10059525-201*** | 2 X100 | 79.2 | 85.8 | 84.2 |

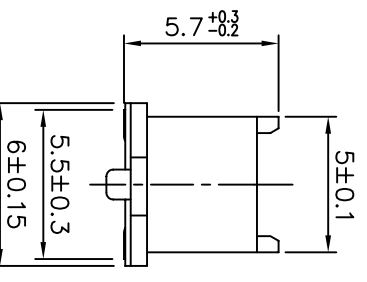
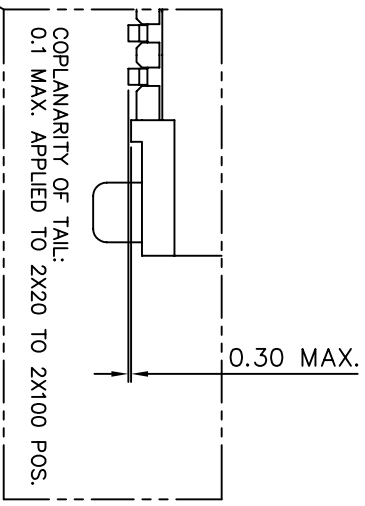
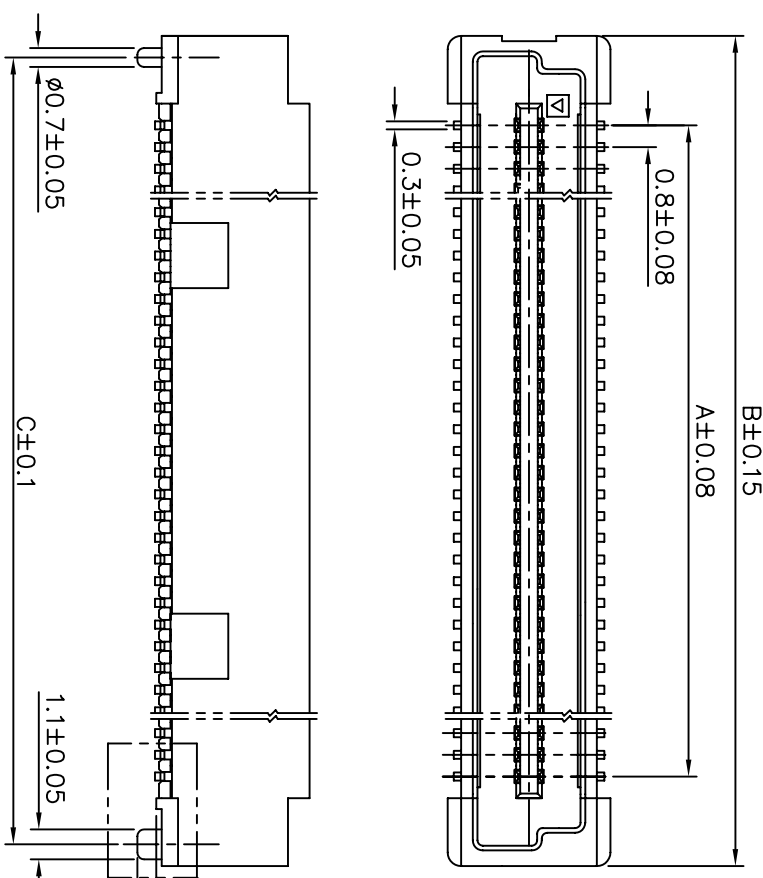


PLUG 1

| mat'l. code | | surface | | tolerance | | projection | | product family | |
|-------------|----------|---------|------------|-----------|------------|------------|-----|----------------------|-------|
| ltr | ecrn no | dr | date | ASMEY14.5 | ASME Y14.5 | MM | FCI | BERGSTAK | title |
| A | S06-0286 | MCH | 2006-08-25 | angles | .XX±0.20 | MM | FCI | 0.8mm BOARD TO BOARD | |
| B | S06-0316 | MCH | 2006-08-25 | 0±.2 | .XXX±0.15 | MM | FCI | PLUG ASS'y | |
| | | | | dr | M.CHEONG | 2006-08-25 | | | |
| | | | | enjr | M.CHEONG | 2006-08-25 | | | |
| | | | | chr | M.CHEONG | 2006-08-25 | | | |
| | | | | appd | JOEY NG | 2006-08-25 | | | |
| Sheet | revision | | | | | | | | |
| Index | sheet | | | | | | | | |



| PRODUCT NO. | NUMBER OF POSITIONS | DIMENSION | | |
|-----------------|---------------------|-----------|------|------|
| | | A | B | C |
| 10069525-042*** | 2 X20 | 15.2 | 21.8 | 20.2 |
| 10069525-062*** | 2 X30 | 23.2 | 29.8 | 28.2 |
| 10069525-082*** | 2 X40 | 31.2 | 37.8 | 36.2 |
| 10069525-102*** | 2 X50 | 39.2 | 45.8 | 44.2 |
| 10069525-122*** | 2 X60 | 47.2 | 53.8 | 52.2 |
| 10069525-142*** | 2 X70 | 55.2 | 61.8 | 60.2 |
| 10069525-162*** | 2 X80 | 63.2 | 69.8 | 68.2 |
| 10069525-182*** | 2 X90 | 71.2 | 77.8 | 76.2 |
| 10069525-202*** | 2 X100 | 79.2 | 85.8 | 84.2 |

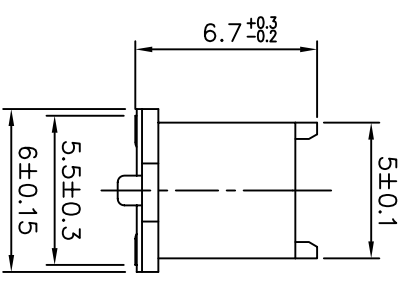
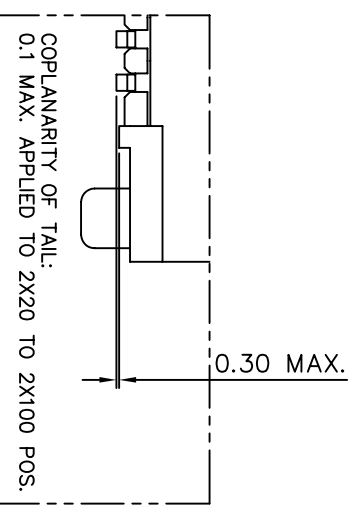
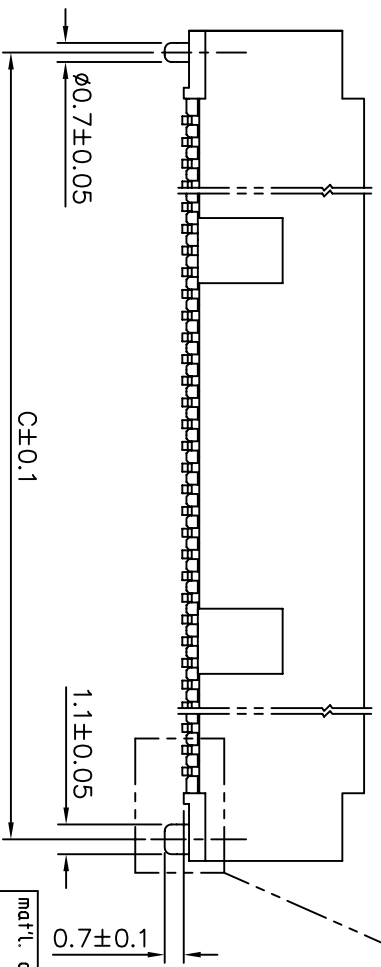
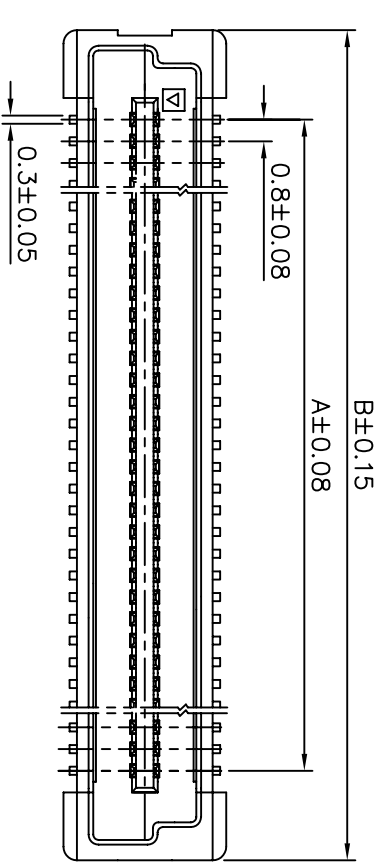


PLUG 2

| mat'l. code | | surface | | tolerance | | projection | | product family | |
|-------------|----------|---------|------------|-----------|------------|------------|-----|----------------------|------------------|
| ltr | ecrn no | dr | date | ASMEY14.5 | ASME Y14.5 | MM | FCI | BERGSTAK | title |
| A | S06-0286 | MCH | 2006-08-25 | angles | .XX±0.20 | MM | FCI | 0.8mm BOARD TO BOARD | |
| B | S06-0316 | MCH | 2006-08-25 | 0°±2' | .XXX±0.15 | scale 3:1 | FCI | PLUG ASS'y | |
| | | | | dr | M.CHEONG | 2006-08-25 | | | |
| | | | | enjr | M.CHEONG | 2006-08-25 | | | |
| | | | | chr | M.CHEONG | 2006-08-25 | | | |
| | | | | appd | JOEY NG | 2006-08-25 | | | |
| sheet | revision | | | | | | | | dwg no |
| index | sheet | | | | | | | | 10069525 |
| | | | | | | | | | sheet 3 of 6 |
| | | | | | | | | | A4 |
| | | | | | | | | | CUSTOMER Drawing |



| PRODUCT NO. | NUMBER OF POSITIONS | DIMENSION | | |
|-----------------|---------------------|-----------|------|------|
| | | A | B | C |
| 10069525-043*** | 2 X20 | 15.2 | 21.8 | 20.2 |
| 10069525-063*** | 2 X30 | 23.2 | 29.8 | 28.2 |
| 10069525-083*** | 2 X40 | 31.2 | 37.8 | 36.2 |
| 10069525-103*** | 2 X50 | 39.2 | 45.8 | 44.2 |
| 10069525-123*** | 2 X60 | 47.2 | 53.8 | 52.2 |
| 10069625-143*** | 2 X70 | 55.2 | 61.8 | 60.2 |
| 10069525-163*** | 2 X80 | 63.2 | 69.8 | 68.2 |
| 10069525-183*** | 2 X90 | 71.2 | 77.8 | 76.2 |
| 10069525-203*** | 2 X100 | 79.2 | 85.8 | 84.2 |

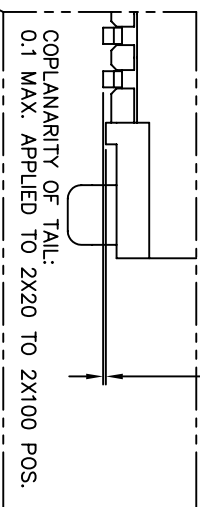
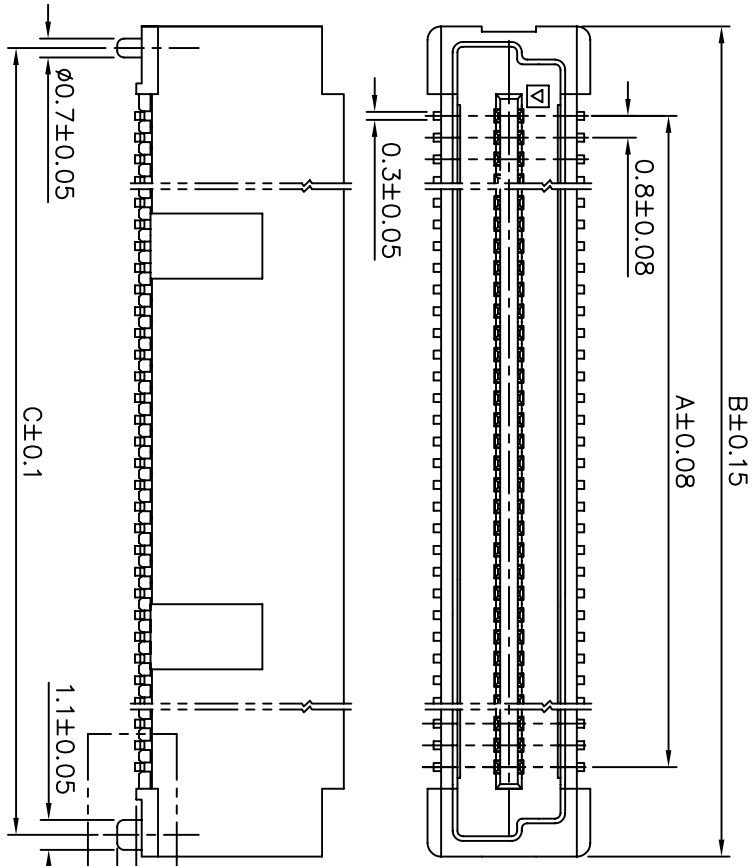


PLUG 3

| ltr | ecr no | dr | date | surface | tol | tol unless otherwise specified | projection | product family | title |
|-------------|----------|----------|------------|-------------------|------------|--------------------------------|------------|------------------|----------------------|
| A | S06-0286 | MCH | 2006-08-25 | ASMEY14.5 | ASME Y14.5 | | MM | BERGSTAK | 0.8mm BOARD TO BOARD |
| B | S06-0316 | MCH | 2006-08-25 | | | | scale 3:1 | | PLUG ASS'y |
| mat'l. code | | - | | surface tolerance | | ASMEY14.5 / ASME Y14.5 | | product family | |
| - | | - | | tol | | tol unless otherwise specified | | title | |
| - | | - | | angles | | .XX±0.20 | | dwg no | |
| - | | - | | 0°±2' | | .XXX±0.15 | | sheet 4 of 6 | |
| - | | - | | dr | | M.CHEONG | | size | |
| - | | - | | engr | | M.CHEONG | | A4 | |
| - | | - | | chr | | M.CHEONG | | CUSTOMER Drawing | |
| - | | - | | appr | | JOEY NG | | | |
| sheet | | revision | | | | | | | |
| index | | sheet | | | | | | | |



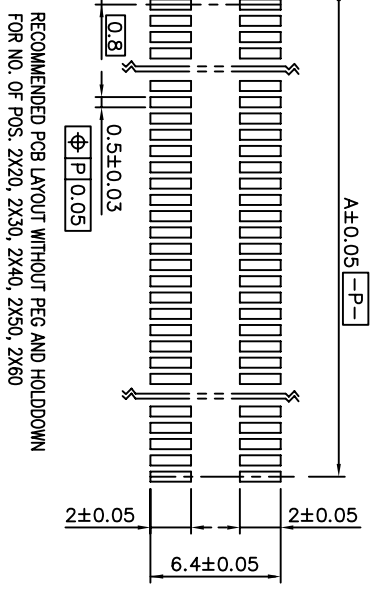
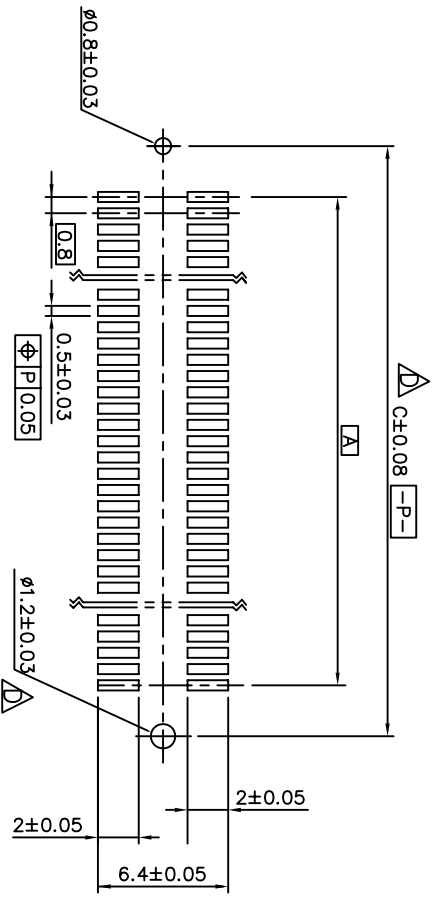
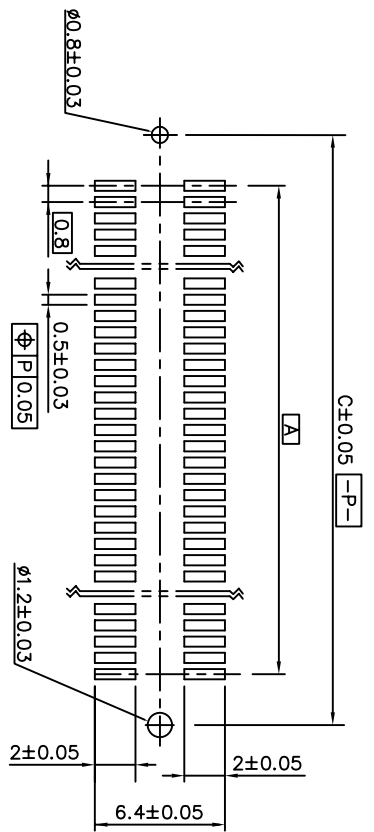
| PRODUCT NO. | NUMBER OF POSITIONS | DIMENSION | | |
|-----------------|---------------------|-----------|------|------|
| | | A | B | C |
| 10069525-044*** | 2 X20 | 15.2 | 21.8 | 20.2 |
| 10069525-064*** | 2 X30 | 23.2 | 29.8 | 28.2 |
| 10069525-084*** | 2 X40 | 31.2 | 37.8 | 36.2 |
| 10069525-104*** | 2 X50 | 39.2 | 45.8 | 44.2 |
| 10069525-124*** | 2 X60 | 47.2 | 53.8 | 52.2 |
| 10069525-144*** | 2 X70 | 55.2 | 61.8 | 60.2 |
| 10069525-164*** | 2 X80 | 63.2 | 69.8 | 68.2 |
| 10069525-184*** | 2 X90 | 71.2 | 77.8 | 76.2 |
| 10069525-204*** | 2 X100 | 79.2 | 85.8 | 84.2 |



PLUG 4

form: AdmmXlc 1 2 3 4 5

| mat'l. code | | surface | | tolerance | | projection | | product family | |
|-------------|----------|---------|------------|-------------|------------|------------|-----|----------------------|------------------|
| ltr | ecrn no | dr | date | ASME Y14.5V | ASME Y14.5 | MM | FCI | BERGSTAK | title |
| A | S06-0286 | MCH | 2006-08-25 | angles | .XX±0.20 | MM | FCI | 0.8mm BOARD TO BOARD | |
| B | S06-0316 | MCH | 2006-08-25 | ∠±2° | .XXX±0.10 | scale 3:1 | FCI | PLUG ASS'y | |
| | | | | dr | M.CHEONG | 2006-08-25 | | | sheet 5 of 6 |
| | | | | enjr | M.CHEONG | 2006-08-25 | | | size A4 |
| | | | | chr | M.CHEONG | 2006-08-25 | | | |
| | | | | appd | JOEY NG | 2006-08-25 | | | CUSTOMER Drawing |
| sheet | revision | | | | | | | | |
| index | sheet | | | | | | | | |



FOR PLUG 1/2/3/4

| mat'l. code | surface | tolerance | projection | product family |
|-------------|------------|------------|------------|----------------------|
| | ASMEY14.5Y | ASME Y14.5 | | BERGSTAK |
| itr | ecrn no | dr | date | title |
| A | S06-0286 | MCH | 2006-08-25 | 0.8mm BOARD TO BOARD |
| B | S10-0086 | MCH | 2010-03-26 | PLUG ASS'y |
| | | | | scale 3:1 |
| | | | | MM |
| | | | | dwg no |
| | | | | 10069525 |
| | | | | sheet 6 of 6 |
| | | | | A4 |
| | | | | CUSTOMER Drawing |
| Sheet | revision | | | |
| index | sheet | | | |



Компания «ЭлектроПласт» предлагает заключение долгосрочных отношений при поставках импортных электронных компонентов на взаимовыгодных условиях!

Наши преимущества:

- Оперативные поставки широкого спектра электронных компонентов отечественного и импортного производства напрямую от производителей и с крупнейших мировых складов;
- Поставка более 17-ти миллионов наименований электронных компонентов;
- Поставка сложных, дефицитных, либо снятых с производства позиций;
- Оперативные сроки поставки под заказ (от 5 рабочих дней);
- Экспресс доставка в любую точку России;
- Техническая поддержка проекта, помощь в подборе аналогов, поставка прототипов;
- Система менеджмента качества сертифицирована по Международному стандарту ISO 9001;
- Лицензия ФСБ на осуществление работ с использованием сведений, составляющих государственную тайну;
- Поставка специализированных компонентов (Xilinx, Altera, Analog Devices, Intersil, Interpoint, Microsemi, Aeroflex, Peregrine, Syfer, Eurofarad, Texas Instrument, Miteq, Cobham, E2V, MA-COM, Hittite, Mini-Circuits, General Dynamics и др.);

Помимо этого, одним из направлений компании «ЭлектроПласт» является направление «Источники питания». Мы предлагаем Вам помощь Конструкторского отдела:

- Подбор оптимального решения, техническое обоснование при выборе компонента;
- Подбор аналогов;
- Консультации по применению компонента;
- Поставка образцов и прототипов;
- Техническая поддержка проекта;
- Защита от снятия компонента с производства.



Как с нами связаться

Телефон: 8 (812) 309 58 32 (многоканальный)

Факс: 8 (812) 320-02-42

Электронная почта: org@eplast1.ru

Адрес: 198099, г. Санкт-Петербург, ул. Калинина, дом 2, корпус 4, литера А.