

**PLEASE CHECK WWW.MOLEX.COM FOR LATEST PART INFORMATION**

**Part Number:** [0527450797](#)  
**Status:** **Active**  
**Overview:**  
**Description:** 0.50mm (.020") Pitch FFC/FPC Connector, Right Angle, SMT, ZIF, Top Contact Style, 7 Circuits, Lead-free, Gold (Au) Contact Plating, High Barrier Packaging

**Agency Certification**

UL E29179

**General**

Product Family FFC/FPC Connectors  
 Series 52745  
 Overview ffc\_fpc\_smt  
 Product Name N/A

**Physical**

Circuits (Loaded) 7  
 Color - Resin Black, White  
 Contact Position Top  
 Durability (mating cycles max) 20  
 Entry Angle 90° Angle  
 Flammability 94V-0  
 Mated Height (in) 0.079 In  
 Mated Height (mm) 2.00 mm  
 Material - Metal Phosphor Bronze  
 Material - Plating Mating Gold  
 Material - Plating Termination Gold  
 Number of Rows 1  
 Orientation Right Angle  
 PCB Locator No  
 PCB Retention Yes  
 Packaging Type Embossed Tape on Reel  
 Pitch - Mating Interface (in) 0.020 In  
 Pitch - Mating Interface (mm) 0.50 mm  
 Polarized to PCB Yes  
 Stackable No  
 Temperature Range - Operating -20°C to +85°C  
 Termination Interface: Style Surface Mount  
 Wire/Cable Type FFC/FPC

**Electrical**

Current - Maximum per Contact 0.5A  
 Voltage - Maximum 50V

**Material Info**

**Reference - Drawing Numbers**

Application Specification AS-52745-001  
 Packaging Specification SPK-52745-001, SPK-52745-002  
 Product Specification PS-52745-051, RPS-52745-056, RPS-52745-060, RPS-52745-061, RPS-52745-062, RPS-52745-063, RPS-52745-064, RPS-52745-065, RPS-52745-066, RPS-52745-068, RPS-52745-071, RPS-52745-072, RPS-52745-074, RPS-52745-075, RPS-52745-077  
 Sales Drawing SD-52745-050, SD-52745-051

**EU RoHS**

**ELV and RoHS Compliant**  
**REACH SVHC**  
 Not Reviewed  
**Halogen-Free Status**

**China RoHS**



**Not Reviewed**

**Need more information on product environmental compliance?**

Email [productcompliance@molex.com](mailto:productcompliance@molex.com)  
 For a multiple part number RoHS Certificate of Compliance, [click here](#)

Please visit the [Contact Us](#) section for any non-product compliance questions.

**Search Parts in this Series**

[52745Series](#)

This document was generated on 06/05/2010

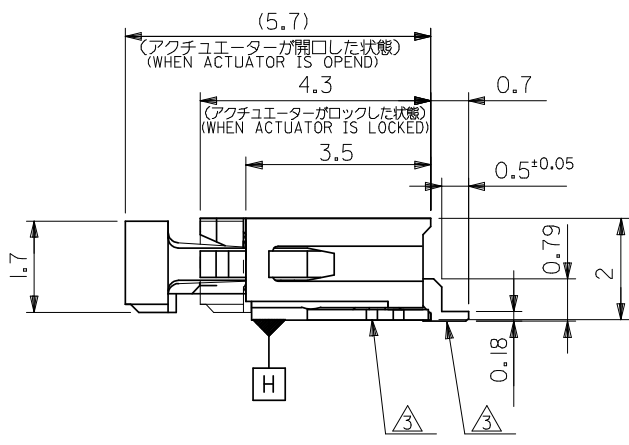
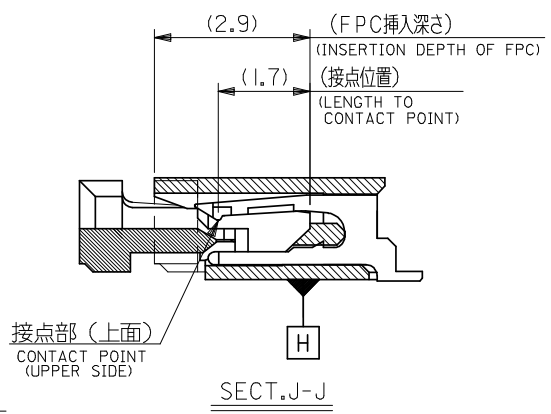
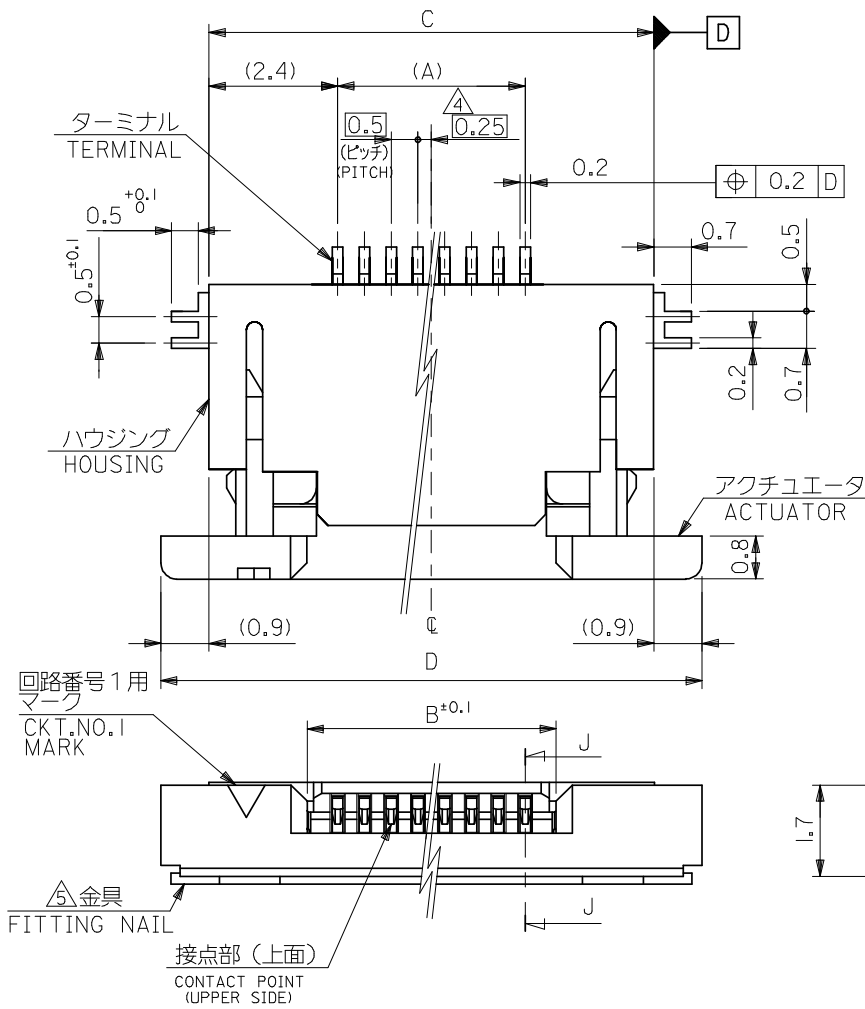
**PLEASE CHECK [WWW.MOLEX.COM](http://WWW.MOLEX.COM) FOR LATEST PART INFORMATION**

注記 NOTES

1. 使用材料 MATERIAL

- ハウジング HOUSING : ポリアミド46、ガラス充填、UL94V-0 (白)  
POLYAMIDE46, GLASS FILLED, UL94V-0(WHITE)
- アクチュエータ ACTUATOR : ポリフェニレンサルファイド、ガラス充填、UL94V-0 (黒)  
POLYPHENYLENE SULFIDE, GLASS FILLED, UL94V-0(BLACK)
- ターミナル TERMINAL : リン青銅 (t=0.2)  
PHOSPOR BRONZE
- メッキ  
 コンタクト部: 金メッキ 0.1マイクロメートル以上  
 テール部: 金メッキ 0.05マイクロメートル以上  
 下地: ニッケル 1.0マイクロメートル以上
- PLATED  
 CONTACT AREA : GOLD 0.1 MICROMETER MINIMUM  
 TAIL AREA : GOLD 0.05 MICROMETER MINIMUM  
 UNDER PLATING : NICKEL 1.0 MICROMETER MINIMUM
- 金具 FITTING NAIL : リン青銅、ニッケル下地純銅メッキ (t=0.2)  
PHOSPOR BRONZE, TIN OVER NICKEL PLATING

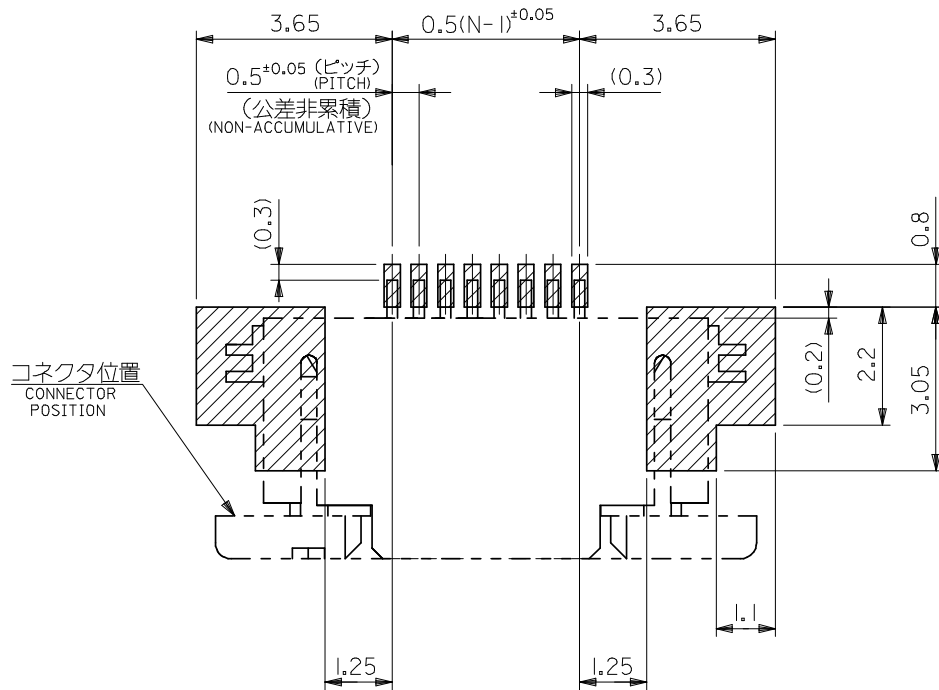
2. エンボステープ梱包時は、アクチュエータがロックした状態とする。  
 IN THE PACKAGE, ACTUATOR OF PART NO. 52745-\*\*\*59 SHOULD BE LOCKED.
- △ ソルダータール半田付け面のズレ量、及び金具半田付け面のズレ量は、基準面 H に対し上方向 0.1 MAX.、下方向 0.15 MAX. とする。  
 MISALIGNMENT OF SOLDER TAILS AND FITTING NAILS FROM H  
 UPPER DIRECTION: 0.1 MAX., LOWER DIRECTION: 0.15 MAX.
- △ 偶数極に適用。  
 APPLY FOR EVEN CIRCUIT.
- △ パターンはくり止め用金具  
 FITTING NAIL FOR PREVENTION OF PEELING  
 OF P.C.B. PATTERN.
6. 本製品は 54745-\*\*\*17 の部分金メッキ品である。  
 THIS PRODUCT IS SELECTIVE GOLD PLATING OF 52745-\*\*\*17.



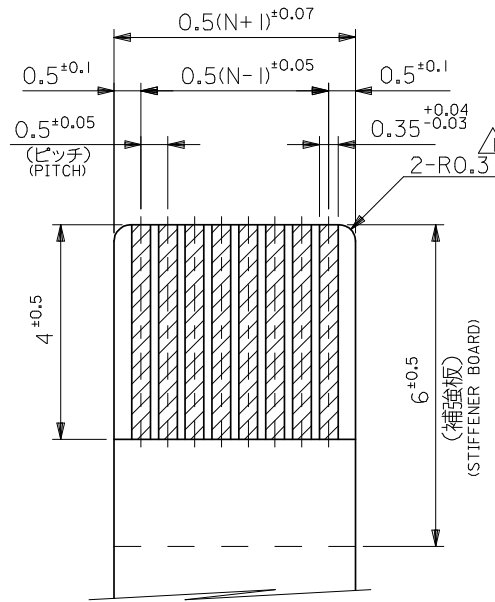
|      |      |       |     |                 |              |         |
|------|------|-------|-----|-----------------|--------------|---------|
| 16.1 | 14.3 | 10.65 | 9.5 | 52745-2097      | 52745-2059   | 20      |
| 15.6 | 13.8 | 10.15 | 9.0 | -1997           | -1959        | 19      |
| 15.1 | 13.3 | 9.65  | 8.5 | -1897           | -1859        | 18      |
| 14.6 | 12.8 | 9.15  | 8.0 | -1797           | -1759        | 17      |
| 14.1 | 12.3 | 8.65  | 7.5 | -1697           | -1659        | 16      |
| 13.6 | 11.8 | 8.15  | 7.0 | -1597           | -1559        | 15      |
| 13.1 | 11.3 | 7.65  | 6.5 | -1497           | -1459        | 14      |
| 12.6 | 10.8 | 7.15  | 6.0 | -1397           | -1359        | 13      |
| 12.1 | 10.3 | 6.65  | 5.5 | -1297           | -1259        | 12      |
| 11.6 | 9.8  | 6.15  | 5.0 | -1197           | -1159        | 11      |
| 11.1 | 9.3  | 5.65  | 4.5 | -1097           | -1059        | 10      |
| 10.6 | 8.8  | 5.15  | 4.0 | -0997           | -0959        | 9       |
| 10.1 | 8.3  | 4.65  | 3.5 | -0897           | -0859        | 8       |
| 9.6  | 7.8  | 4.15  | 3.0 | -0797           | -0759        | 7       |
| 9.1  | 7.3  | 3.65  | 2.5 | -0697           | -0659        | 6       |
| 8.1  | 6.3  | 2.65  | 1.5 | 52745-0497      | 52745-0459   | 4       |
| D    | C    | B     | (A) | EMBOSSED TAPE   | MATERIAL NO. | 極数      |
|      |      |       |     | ORDER No. オーダー番 |              | CIRCUIT |

52745-\*\*\*59 MODEL NO.

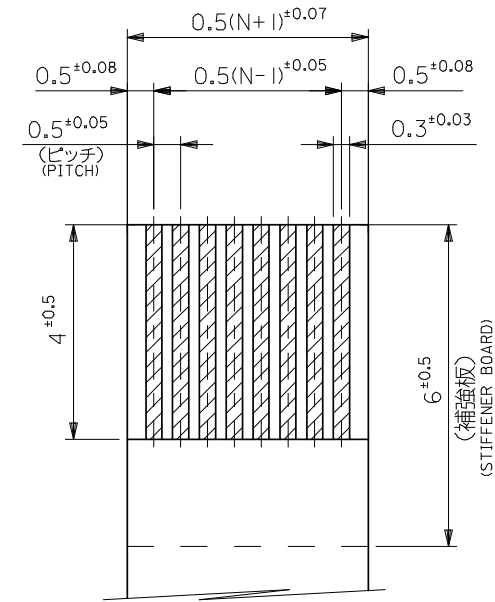
|  |                                       |       |                            |                   |   |                        |                        |  |
|--|---------------------------------------|-------|----------------------------|-------------------|---|------------------------|------------------------|--|
| REVISED<br>EC NO: J2008-4308<br>DRWN: MABEI 2008/06/27<br>CH'KD: THARUYAMA 2008/06/30<br>APPR: NUKITA 2008/06/30 | GENERAL TOLERANCES (UNLESS SPECIFIED) |       | DIMENSION STYLE<br>MM ONLY |                   | SCALE<br>---  | DESIGN UNITS<br>METRIC | THIRD ANGLE PROJECTION |  |
|  | 10 UNDER                              | ±0.2  | DRAWN BY<br>M. NABEI       | DATE<br>'05/02/14 | TITLE<br>0.5 FPC CONN ASSY ZIF<br>UPR CONT<br>-LEAD FREE- |                        |                        |  |
|  | 10 OVER 30 UNDER                      | ±0.25 | CHECKED BY<br>K. TOJO      | DATE<br>'05/02/14 |   |                        |                        |  |
|  | 30 OVER                               | ±0.3  | APPROVED BY<br>N. UKITA    | DATE<br>'05/02/14 | MOLEX INCORPORATED  |                        |                        |  |
|  | ANGULAR                               | ±3 °  | MATERIAL NO.               | DOCUMENT NO.      |   |                        |                        |  |
| DRAFT WHERE APPLICABLE<br>MUST REMAIN<br>WITHIN DIMENSIONS   |                                       |       | SEE TABLE                  |                   | SD-52745-050  |                        | SHEET NO.<br>1 OF 2    |  |



参考基板レイアウト  
P.C. BOARD PATTERN  
DIMENSION (REF.)  
(マウント面)  
(MOUNTING SIDE)



適合FPC推奨寸法  
APPLICABLE FPC  
RECOMMENDED DIMENSION  
(仕上がり厚さ: 0.3±0.03)  
(THICKNESS: 0.3±0.03)



適合FFC推奨寸法  
APPLICABLE FFC  
RECOMMENDED DIMENSION  
(仕上がり厚さ: 0.3±0.03)  
(THICKNESS: 0.3±0.03)

ABOUT FPC :

打抜き方向は導体側から補強板側を推奨致します。  
補強フィルム材質はポリイミドを推奨致します。  
接着剤は熱硬化接着剤を推奨致します。

RECOMMENDED PUNCHER DIRECTION : FROM CONDUCTOR SIDE TO STIFFENER BOARD SIDE.  
RECOMMENDED MATERIAL :  
STIFFENER FILM : POLYIMIDE  
BONDING AGENT : THERMOSETTING BONDING AGENT

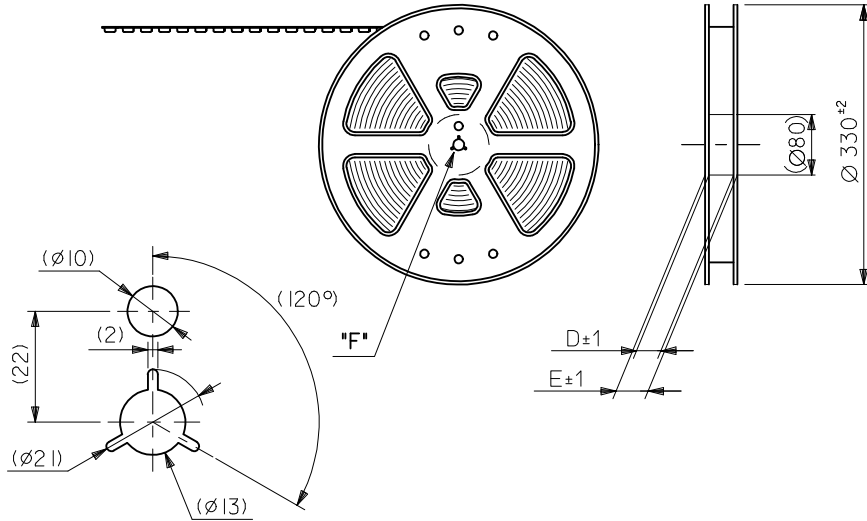
注記 NOTES

△ R0.3は、FPCの導体部にかからないこと。  
R0.3 MUST NOT BE OVERLAPPED TO PATTERN OF FPC.

52745-\*\*\*59 MODEL NO.

|   |                                       |             |                            |                   |   |                        |                        |  |
|---|---------------------------------------|-------------|----------------------------|-------------------|---|------------------------|------------------------|--|
| REVISED<br>EC NO: J2008-4308<br>DRWN: NABEI 2008/06/27<br>CHKD: THARUYAMA 2008/06/30<br>APPR: NUKITA 2008/06/30                       | GENERAL TOLERANCES (UNLESS SPECIFIED) |             | DIMENSION STYLE<br>MM ONLY |                   | SCALE<br>---  | DESIGN UNITS<br>METRIC | THIRD ANGLE PROJECTION |  |
|   | 10 UNDER                              | ±0.2        | DRAWN BY<br>M. NABEI       | DATE<br>'05/02/14 | TITLE<br>0.5 FPC CONN ASSY ZIF<br>UPR CONT<br>-LEAD FREE- |                        |                        |  |
|   | 10 OVER 30 UNDER                      | ±0.25       | CHECKED BY<br>K. TOJO      | DATE<br>'05/02/14 |   |                        |                        |  |
|   | 30 OVER                               | ±0.3        | APPROVED BY<br>N. UKITA    | DATE<br>'05/02/14 | MOLEX INCORPORATED  |                        |                        |  |
|   | ANGULAR                               | ±3 °        | MATERIAL NO.               | DOCUMENT NO.      |   |                        |                        |  |
| DRAFT WHERE APPLICABLE<br>MUST REMAIN<br>WITHIN DIMENSIONS  |                                       | SEE SHEET 1 |                            | SD-52745-050      |   |                        |                        |  |
| SIZE A3 THIS DRAWING CONTAINS INFORMATION THAT IS PROPRIETARY TO MOLEX INCORPORATED AND SHOULD NOT BE USED WITHOUT WRITTEN PERMISSION |                                       |             |                            |                   |   |                        |                        |  |

引き出し方向  
←  
PULL OUT  
DIRECTION



**DETAIL "F"**

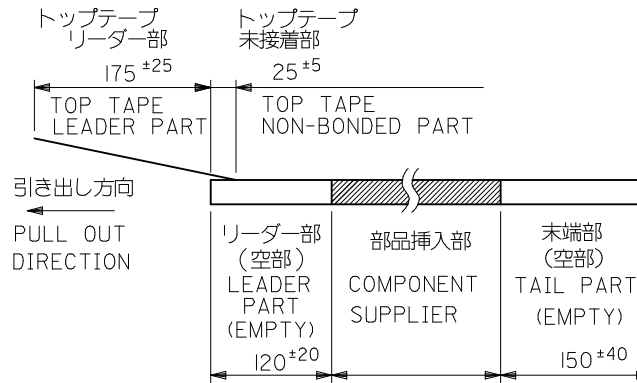
5. 材料 キャリアテープ:ポリプロピレン (PP)  
 トップテープ:PET, PE, PEF  
 リール:ポリスチレン (PS) <リサイクル材を含む>  
 MATERIAL CARRIER TAPE:POLYPROPYLENE  
 TOP TAPE:PET,PE,PEF  
 REEL:POLYSTYRENE(PS)  
 <RECYCLE MATERIAL CONTAINED>

6. 本製品は 52745- \*\*90 の鉛フリー品である。  
 THIS PRODUCT IS LEAD FREE OF 52745-\*\*90

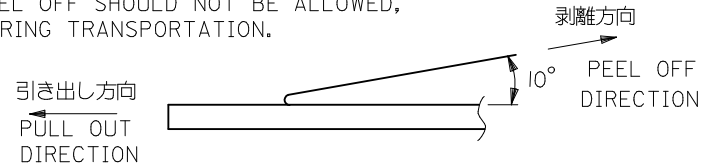
7. 本製品は乾燥剤入り、ハイバリア梱包仕様である。  
 THIS PRODUCT IS HIGH BARRIER PACKAGE WITH DESICCANT.

注記 NOTES

- 製品番号 52745-\*\*59 の梱包状態はアクチュエータがロックした状態とする。  
 詳細寸法については図面 SD-52745-050 を参照下さい。  
 IN THE PACKAGE,ACTUATOR OF PART NO.52745-\*\*59 SHOULD BE LOCKED  
 RE DETAILED DIMENSIONS,SEE SD-52745-050.
- 梱包数量:1000個/リール  
 NUMBER OF CONNECTORS:1000PCS/REEL
- リードテープ長さ LEAD TAPE LENGTH

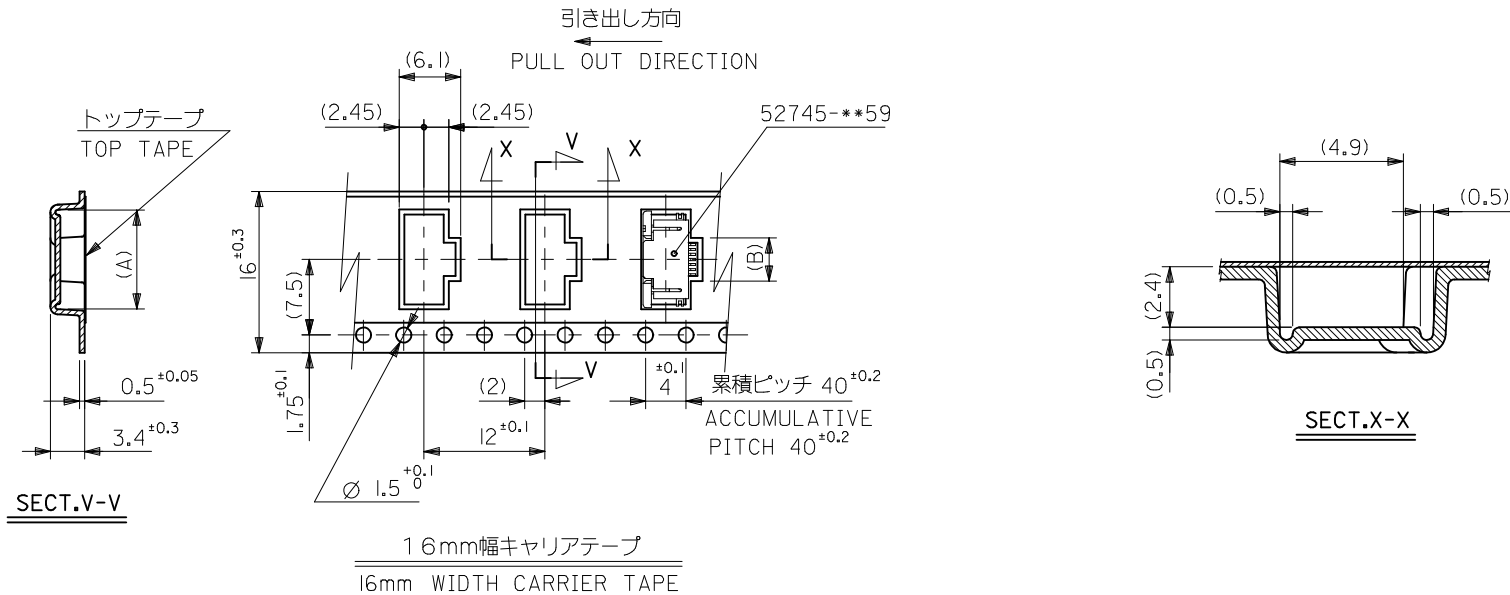


- トップテープの剥離強度: (剥離方向は下図参照)  
 0.1N~1.3N (10gf~130gf) 尚、本規格値は、出荷時に適用。  
 (但し、輸送時に剥離が発生しない事。)  
 PEELING OFF FORCE OF TOP TAPE:  
 0.1N~1.3N(10gf~130gf)(PEELING DIRECTION AS SHOWN IN FOLLOWING FIG.)  
 THIS REQUIREMENT SHOULD BE APPLIED AT SHIPMENT  
 PEEL OFF SHOULD NOT BE ALLOWED,  
 DURING TRANSPORTATION.



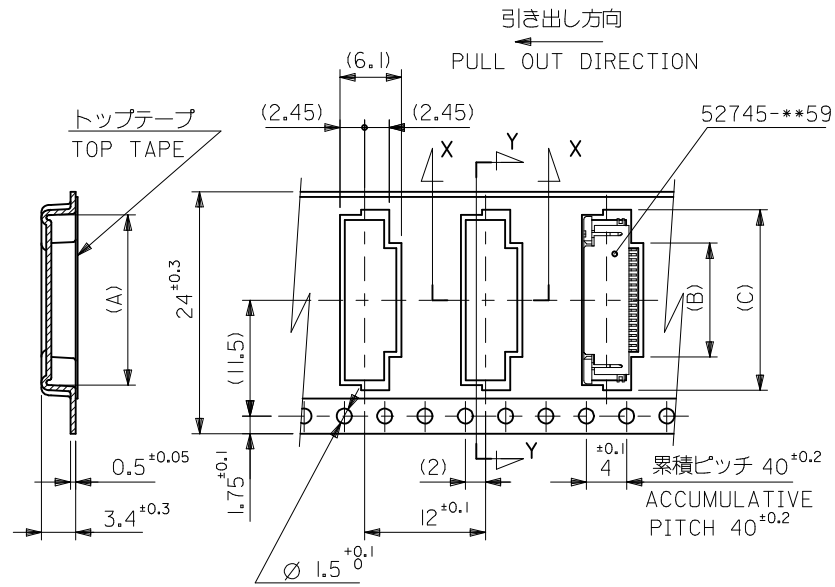
52745-\*\*97 MODEL NO.

|   |                    |  |      |  |                   |   |                        |                              |                     |
|---|--------------------|--|------|--|-------------------|---|------------------------|------------------------------|---------------------|
| REVISED<br>EC NO: J2009-2061<br>DRWN:TKON 2009/05/20<br>CHKD:HATSUMOTO 2009/05/21<br>APPR:NUKITA 2009/05/21 | DESCRIPTION<br>REV | GENERAL TOLERANCES (UNLESS SPECIFIED)                      |      | DIMENSION STYLE<br>MM ONLY   |                   | SCALE<br>---  | DESIGN UNITS<br>METRIC | THIRD ANGLE PROJECTION       |                     |
|   |                    | 10 UNDER   | ±--- | DRAWN BY<br>M.NABEI  | DATE<br>'05/02/14 | TITLE<br>0.5 FPC CONN UPR CONT<br>EMBSTP PKG<br>-LEAD FREE- |                        |                              |                     |
|   |                    | 10 OVER 30 UNDER   | ±--- | CHECKED BY<br>K.TOJO   | DATE<br>'05/02/14 | MOLEX INCORPORATED  |                        |                              |                     |
|   |                    | 30 OVER  | ±--- | APPROVED BY<br>N.NUKITA  | DATE<br>'05/02/14 | MATERIAL NO.<br>SEE TABLE                                   |                        | DOCUMENT NO.<br>SD-52745-051 | SHEET NO.<br>1 OF 3 |
| ANGULAR ±---°   |                    | DRAFT WHERE APPLICABLE<br>MUST REMAIN<br>WITHIN DIMENSIONS |      | THIS DRAWING CONTAINS INFORMATION THAT IS PROPRIETARY TO MOLEX<br>INCORPORATED AND SHOULD NOT BE USED WITHOUT WRITTEN PERMISSION |                   |   |                        |                              |                     |



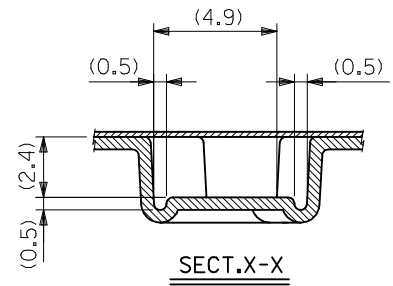
|                                |      |      |     |     |              |               |
|--------------------------------|------|------|-----|-----|--------------|---------------|
| 16                             | 21.4 | 17.4 | 2.8 | 8.4 | 52745-0497   | 4             |
| キャリアテープ幅<br>CARRIER TAPE WIDTH | E    | D    | (B) | (A) | MATERIAL NO. | 極数<br>CIRCUIT |

|   |   |                            |                   |   |                              |
|---|---|----------------------------|-------------------|---|------------------------------|
| REVISED<br>EC NO.: J2009-2061<br>DRWN:TKGN 2009/05/20<br>CHKD:HMATSUMOTO 2009/05/21<br>APPR:NUKITA 2009/05/21 | GENERAL TOLERANCES<br>(UNLESS SPECIFIED)  | DIMENSION STYLE<br>MM ONLY | SCALE<br>---      | DESIGN UNITS<br>METRIC                                      | THIRD ANGLE<br>PROJECTION    |
|   | 10 UNDER ±---   | DRAWN BY<br>M. NABEI       | DATE<br>'05/02/14 | TITLE<br>0.5 FPC CONN UPR CONT<br>EMBSTP PKG<br>-LEAD FREE- |                              |
|   | 10 OVER 30 UNDER ±---   | CHECKED BY<br>K. TOJO      | DATE<br>'05/02/14 | MOLEX INCORPORATED  |                              |
|   | 30 OVER ±---  | APPROVED BY<br>N. UKITA    | DATE<br>'05/02/14 | MATERIAL NO.<br>SEE TABLE                                   | DOCUMENT NO.<br>SD-52745-051 |
| ANGULAR ±--- °  | THIS DRAWING CONTAINS INFORMATION THAT IS PROPRIETARY TO MOLEX INCORPORATED AND SHOULD NOT BE USED WITHOUT WRITTEN PERMISSION |                            |                   |   |                              |
| DRAFT WHERE APPLICABLE<br>MUST REMAIN<br>WITHIN DIMENSIONS  |   |                            |                   |   |                              |



SECT.Y-Y

24mm幅キャリアテープ  
24mm WIDTH CARRIER TAPE



SECT.X-X

|                                |      |      |            |      |      |            |     |              |               |
|--------------------------------|------|------|------------|------|------|------------|-----|--------------|---------------|
| 24                             | 29.4 | 25.4 | 17.4       | 10.8 | 16.4 | 52745-2097 | 20  |              |               |
|                                |      |      | 16.9       | 10.3 | 15.9 | -1997      | 19  |              |               |
|                                |      |      | 16.4       | 9.8  | 15.4 | -1897      | 18  |              |               |
|                                |      |      | 15.9       | 9.3  | 14.9 | -1797      | 17  |              |               |
|                                |      |      | 15.4       | 8.8  | 14.4 | -1697      | 16  |              |               |
|                                |      |      | 14.9       | 8.3  | 13.9 | -1597      | 15  |              |               |
|                                |      |      | 14.4       | 7.8  | 13.4 | -1497      | 14  |              |               |
|                                |      |      | 13.9       | 7.3  | 12.9 | -1397      | 13  |              |               |
|                                |      |      | 13.4       | 6.8  | 12.4 | -1297      | 12  |              |               |
|                                |      |      | 12.9       | 6.3  | 11.9 | -1197      | 11  |              |               |
|                                |      |      | 12.4       | 5.8  | 11.4 | -1097      | 10  |              |               |
|                                |      |      | 11.9       | 5.3  | 10.9 | -0997      | 9   |              |               |
|                                |      |      | 11.4       | 4.8  | 10.4 | -0897      | 8   |              |               |
| 10.9                           | 4.3  | 9.9  | -0797      | 7    |      |            |     |              |               |
| 10.4                           | 3.8  | 9.4  | 52745-0697 | 6    |      |            |     |              |               |
| キャリアテープ幅<br>CARRIER TAPE WIDTH |      |      | E          | D    | (C)  | (B)        | (A) | MATERIAL NO. | 極数<br>CIRCUIT |

|  |  |      |                            |                   |  |                        |                        |  |
|--|--|------|----------------------------|-------------------|--|------------------------|------------------------|--|
| REVISED<br>EC NO: J2009-2061<br>DRWN:TKON 2009/05/20<br>CHKD:HMATSUMOTO 2009/05/21<br>APPR:NUKITA 2009/05/21 | GENERAL TOLERANCES (UNLESS SPECIFIED)  |      | DIMENSION STYLE<br>MM ONLY |                   | SCALE<br>---   | DESIGN UNITS<br>METRIC | THIRD ANGLE PROJECTION |  |
|  | 10 UNDER   | ±--- | DRAWN BY<br>M. NABEI       | DATE<br>'05/02/14 | TITLE<br>0.5 FPC CONN UPR CONT<br>EMBSTP PKG<br>-LEAD FREE-  |                        |                        |  |
|  | 10 OVER 30 UNDER   | ±--- | CHECKED BY<br>K. TOJO      | DATE<br>'05/02/14 | MOLEX INCORPORATED   |                        |                        |  |
|  | 30 OVER  | ±--- | APPROVED BY<br>N. UKITA    | DATE<br>'05/02/14 | DOCUMENT NO.<br>SD-52745-051   |                        | SHEET NO.<br>3 OF 3    |  |
|  | ANGULAR ±--- °<br>DRAFT WHERE APPLICABLE<br>MUST REMAIN<br>WITHIN DIMENSIONS |      | MATERIAL NO.<br>SEE TABLE  |                   | THIS DRAWING CONTAINS INFORMATION THAT IS PROPRIETARY TO MOLEX<br>INCORPORATED AND SHOULD NOT BE USED WITHOUT WRITTEN PERMISSION |                        |                        |  |



Компания «ЭлектроПласт» предлагает заключение долгосрочных отношений при поставках импортных электронных компонентов на взаимовыгодных условиях!

Наши преимущества:

- Оперативные поставки широкого спектра электронных компонентов отечественного и импортного производства напрямую от производителей и с крупнейших мировых складов;
- Поставка более 17-ти миллионов наименований электронных компонентов;
- Поставка сложных, дефицитных, либо снятых с производства позиций;
- Оперативные сроки поставки под заказ (от 5 рабочих дней);
- Экспресс доставка в любую точку России;
- Техническая поддержка проекта, помощь в подборе аналогов, поставка прототипов;
- Система менеджмента качества сертифицирована по Международному стандарту ISO 9001;
- Лицензия ФСБ на осуществление работ с использованием сведений, составляющих государственную тайну;
- Поставка специализированных компонентов (Xilinx, Altera, Analog Devices, Intersil, Interpoint, Microsemi, Aeroflex, Peregrine, Syfer, Eurofarad, Texas Instrument, Miteq, Cobham, E2V, MA-COM, Hittite, Mini-Circuits, General Dynamics и др.);

Помимо этого, одним из направлений компании «ЭлектроПласт» является направление «Источники питания». Мы предлагаем Вам помощь Конструкторского отдела:

- Подбор оптимального решения, техническое обоснование при выборе компонента;
- Подбор аналогов;
- Консультации по применению компонента;
- Поставка образцов и прототипов;
- Техническая поддержка проекта;
- Защита от снятия компонента с производства.



#### Как с нами связаться

**Телефон:** 8 (812) 309 58 32 (многоканальный)

**Факс:** 8 (812) 320-02-42

**Электронная почта:** [org@eplast1.ru](mailto:org@eplast1.ru)

**Адрес:** 198099, г. Санкт-Петербург, ул. Калинина, дом 2, корпус 4, литера А.