

PN Series Alternate & Momentary Action Pushbutton Switches



A

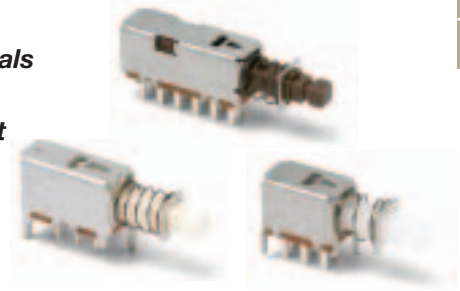
Pushbutton

Features/Benefits

- Momentary or locking action
- 3 actuation forces for customized feel
- Low cost, reliable contact design
- 1-4 poles available
- RoHS compliant

Typical Applications

- Computers and peripherals
- Instrumentation and measurement equipment
- Non-power, on-off switch applications



Specifications

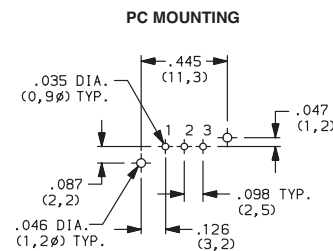
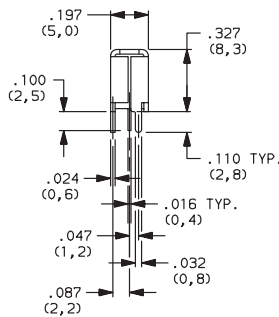
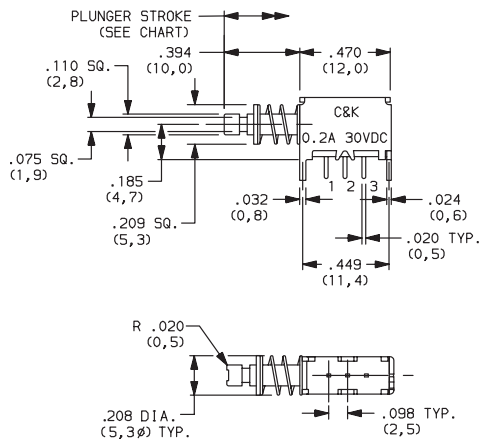
CONTACT RATING: 0.2 AMP @ 30 V DC max.
 ELECTRICAL LIFE: 10,000 make-and-break cycles at full load.
 MECHANICAL LIFE: 10,000 on/off cycles.
 CONTACT RESISTANCE: 50 mΩ max. initial,
 100 milliohms max. at end of life.
 INSULATION RESISTANCE: 100 MΩ min. at 500 V DC.
 DIELECTRIC STRENGTH: 500 V AC min.
 OPERATING/STORAGE TEMPERATURES: -10°C to 60°C.
 PACKAGING: Switches are supplied in anti-static bags
 or anti-static trays.

Materials

FRAME: Tin plated steel.
 ACTUATOR: Polyacetal. Color: Manufacturing option.
 BASE: Laminated phenolic.
 TERMINALS: Silver plated brass.
 MOVABLE CONTACTS: Silver plated (or clad) phosphor bronze.
 RETURN SPRING: Music wire.
 DETENT SPRING: Phosphor bronze.
 DETENT SPRING PLATE: Phosphor bronze.
 RETURN SPRING RETAINER RING: Nickel (or tin) plated steel.
 TERMINAL SEAL: Epoxy.

How To Order

Complete part numbers for PN Series Alternate & Momentary Action Pushbutton Switches are shown on pages A-82 thru A-83.



PN11SBSA03QE
SPDT

PART NUMBER	SWITCH FUNCTION	OPERATING FORCE (typ.)	STROKE		SHORTING/ NON-SHORTING	SCHEMATIC
			LOCK STROKE	FULL STROKE		
PN11SBN03QE	SPDT Momentary	120g max.	—	.140 (3,5)	Non-Shorting	
PN11SCNA03QE	SPDT Momentary	150g	—			
PN11SHNA03QE	SPDT Momentary	230g	—			
PN11SJNA03QE	SPDT Momentary	330g	—			
PN12SHNA03QE	SPDT Locking	230g	.100g (2,5)	.140 (3,5)	Shorting	
PN12SJNA03QE	SPDT Locking	330g	.100g (2,5)			
PN11SBSA03QE	SPDT Momentary	120g max.	—			
PN11SCSA03QE	SPDT Momentary	150g	—			
PN11SHSA03QE	SPDT Momentary	230g	—	.140 (3,5)	Shorting	
PN11SJSA03QE	SPDT Momentary	330g	—			
PN12SHSA03QE	SPDT Locking	230g	.100g (2,5)			
PN12SJSA03QE	SPDT Locking	330g	.100 (2,5)			



Dimensions are shown: Inches (mm)
 Specifications and dimensions subject to change

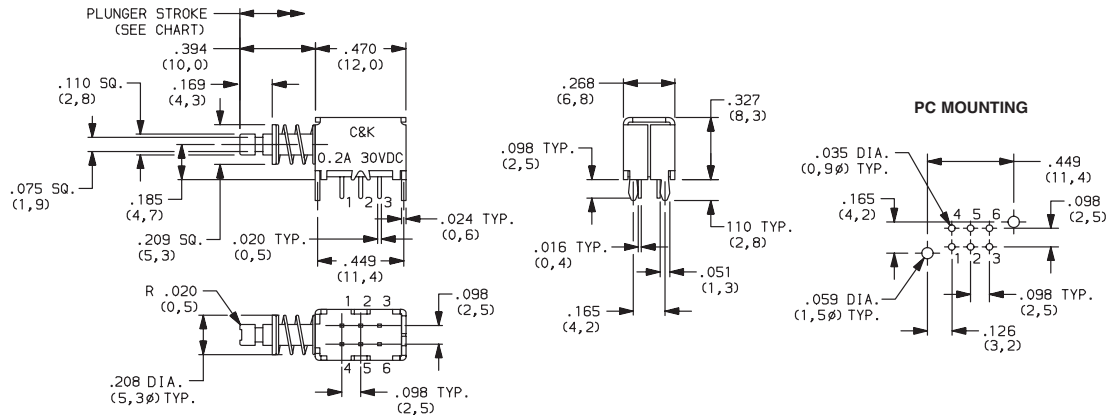


PN Series Alternate & Momentary Action Pushbutton Switches

Pushbutton
A



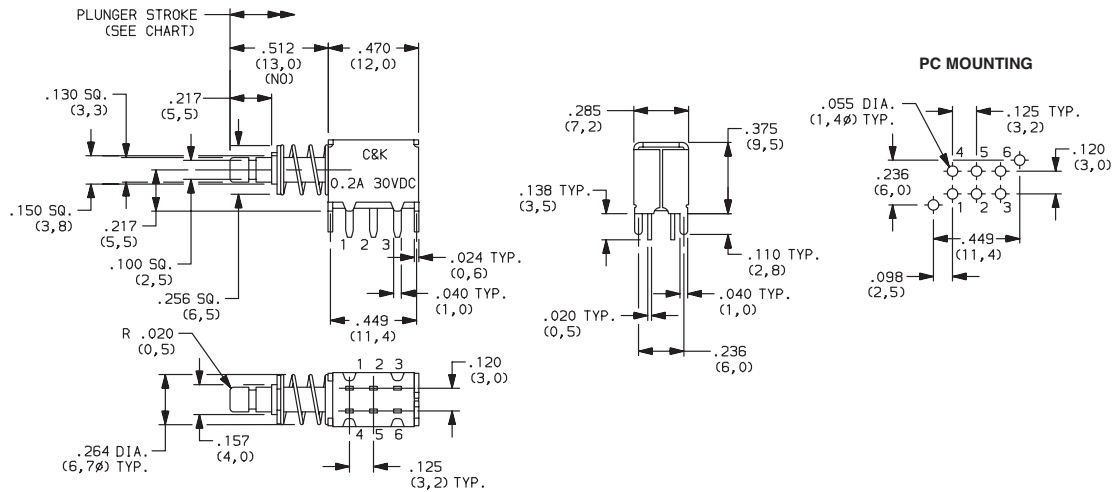
**PN21SBSA03QE
DPDT**



PART NUMBER	SWITCH FUNCTION	OPERATING FORCE (typ.)	STROKE		SHORTING/ NON-SHORTING	SCHEMATIC
			LOCK STROKE	FULL STROKE		
PN21SBNA03QE	DPDT Momentary	120g max.	—	.140 (3,5)	Non-Shorting	
PN21SDNA03QE	DPDT Momentary	175g	—			
PN21SJNA03QE	DPDT Momentary	330g	—			
PN22SJNA03QE	DPDT Locking	330g	.100 (2,5)			
PN21SBSA03QE	DPDT Momentary	120g max.	—	.140 (3,5)	Shorting	
PN21SDSA03QE	DPDT Momentary	175g	—			
PN21SJSA03QE	DPDT Momentary	330g	—			
PN22SJSA03QE	DPDT Locking	330g	.100 (2,5)			



**PN21LASA03QE
DPDT**



PART NUMBER	SWITCH FUNCTION	OPERATING FORCE (typ.)	STROKE		SHORTING/ NON-SHORTING	SCHEMATIC
			LOCK STROKE	FULL STROKE		
PN21LANA03QE	DPDT Momentary	100g max.	—	.140 (3,5)	Non-Shorting	
PN21LFNA03QE	DPDT Momentary	120g	—			
PN21LDNA03QE	DPDT Momentary	175g	—			
PN21LENA03QE	DPDT Momentary	300g	—			
PN22LENA03QE	DPDT Locking	300g	.100 (2,5)	.140 (3,5)	Shorting	
PN21LASA03QE	DPDT Momentary	100g max.	—			
PN21LFSA03QE	DPDT Momentary	120g	—			
PN21LDSA03QE	DPDT Momentary	175g	—			
PN21LESA03QE	DPDT Momentary	300g	—	.100 (2,5)		
PN22LESA03QE	DPDT Locking	300g	.100 (2,5)			



Third Angle Projection
Dimensions are shown: Inches (mm)
Specifications and dimensions subject to change

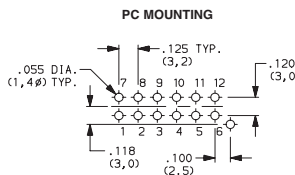
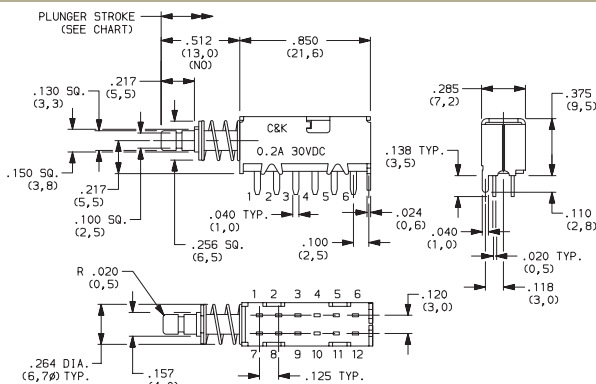


PN Series Alternate & Momentary Action Pushbutton Switches



A

Pushbutton

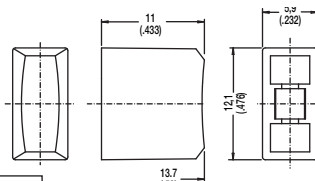


PN41LGSA02QE
4PDT

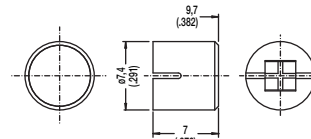
PART NUMBER	SWITCH FUNCTION	OPERATING FORCE (typ.)	STROKE		SHORTING/ NON-SHORTING	SCHEMATIC
			LOCK STROKE	FULL STROKE		
PN41LGNA02QE	4PDT Momentary	175g	-	.140 (3,5)	Non-Shorting	
PN41LENA02QE	4PDT Momentary	300g				
PN42LENA02QE	4PDT Locking	300g	.100 (2,5)			
PN41LGSA02QE	4PDT Momentary	175g	-	.140 (3,5)	Shorting	
PN41LESA02QE	4PDT Momentary	300g				
PN42LESA02QE	4PDT Locking	300g	.100 (2,5)			

BUTTONS MUST BE ORDERED SEPARATELY. SHIPPED IN BULK.

PE



PV

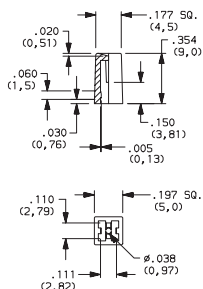


OPTION CODE	COLOR
RD	Red
GY	Gray
BK	Black
WH	White

PE and PV buttons fit .130" square plungers

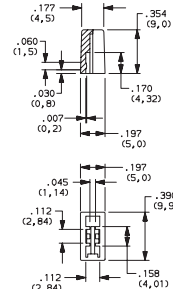
Indexed

- G001A Black
- G001G Gray
- G001I Ivory
- G001R Red



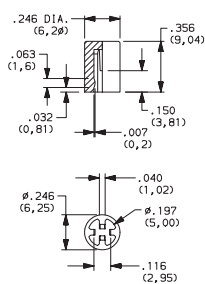
Rectangular

- G002A Black
- G002G Gray
- G002I Ivory
- G002R Red



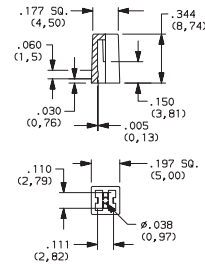
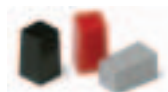
Round

- G003A Black
- G003G Gray
- G003I Ivory
- G003R Red



Square

- G004A Black
- G004G Gray
- G004I Ivory
- G004R Red



G001, G002, G003 and G004 buttons fit .110" square plungers.



Third Angle
Projection



Dimensions are shown: Inches (mm)
Specifications and dimensions subject to change



Компания «ЭлектроПласт» предлагает заключение долгосрочных отношений при поставках импортных электронных компонентов на взаимовыгодных условиях!

Наши преимущества:

- Оперативные поставки широкого спектра электронных компонентов отечественного и импортного производства напрямую от производителей и с крупнейших мировых складов;
- Поставка более 17-ти миллионов наименований электронных компонентов;
- Поставка сложных, дефицитных, либо снятых с производства позиций;
- Оперативные сроки поставки под заказ (от 5 рабочих дней);
- Экспресс доставка в любую точку России;
- Техническая поддержка проекта, помощь в подборе аналогов, поставка прототипов;
- Система менеджмента качества сертифицирована по Международному стандарту ISO 9001;
- Лицензия ФСБ на осуществление работ с использованием сведений, составляющих государственную тайну;
- Поставка специализированных компонентов (Xilinx, Altera, Analog Devices, Intersil, Interpoint, Microsemi, Aeroflex, Peregrine, Syfer, Eurofarad, Texas Instrument, Miteq, Cobham, E2V, MA-COM, Hittite, Mini-Circuits, General Dynamics и др.);

Помимо этого, одним из направлений компании «ЭлектроПласт» является направление «Источники питания». Мы предлагаем Вам помощь Конструкторского отдела:

- Подбор оптимального решения, техническое обоснование при выборе компонента;
- Подбор аналогов;
- Консультации по применению компонента;
- Поставка образцов и прототипов;
- Техническая поддержка проекта;
- Защита от снятия компонента с производства.



Как с нами связаться

Телефон: 8 (812) 309 58 32 (многоканальный)

Факс: 8 (812) 320-02-42

Электронная почта: org@eplast1.ru

Адрес: 198099, г. Санкт-Петербург, ул. Калинина, дом 2, корпус 4, литера А.