

CONFIGURATION OF CUSTOMER DOCUMENTS

P/N	DOCUMENTS	DWG. NO.	TITLE
HLW__R/S-2D7LF	SPEC	SC-HLW05	
	CONNECTOR	JSA96409	CAT NO.TABLE FOR 1mm SPACING CONNECTOR
		JSA96410	1mm SPACING CONNECTOR
		JSA96411	1mm SPACING CONNECTOR
	CABLE	JSA93382	RECOMMENDED CABLE(FPC)
		JSA93383	RECOMMENDED CABLE(FFC)
MANUAL	BJM-HLW101		

P/N	DOCUMENTS	DWG. NO.	TITLE
HLW__S-6D7LF	SPEC	SC-HLW06	
	CONNECTOR	JSA96412	CAT NO.TABLE FOR 1mm SPACING CONNECTOR
		JSA96413	1mm SPACING CONNECTOR
		JSA97169	1mm SPACING CONNECTOR
	CABLE	JSA93626	RECOMMENDED CABLE(C/C)
MANUAL	BJM-HLW102		



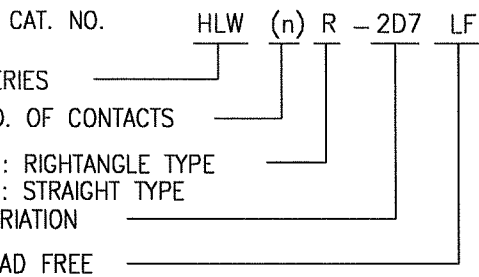
FCIconnect.com

Copyright FCI.

mat'l. code -				surface 58 / tolerance ISO 1302 / ISO 406 / ISO 1101		projection		product family 58PF/58QF		CODE JP	
Ltr	ecn no	dr	date	tolerances unless otherwise specified		mm		title 1mm SPACING CONNECTOR DOCUMENT LIST			
A	J05-0270	H.T	5/11/'05	angles	linear						
B	J05-293	N.S	5/18/'05								
C	J05-0517	N.S	8/11/'05			scale X		dwg no JSA 96417 sheet 1 of 1 size A4 type Product Customer Drawing			
D	J06-0238	M.M	6/8/'06	dr	H.YAMASHITA 2009-6-29						
E	J09-0255	M.Y	2009-6-29	enr	H.YAMASHITA 2009-6-29						
				chr	S. W. Miller 2009-6-29						
				appd	J. Cladon 2009-6-29						
sheet index	revision sheet	E	1								Rev. E

CAT. NO. & DIMENSIONS

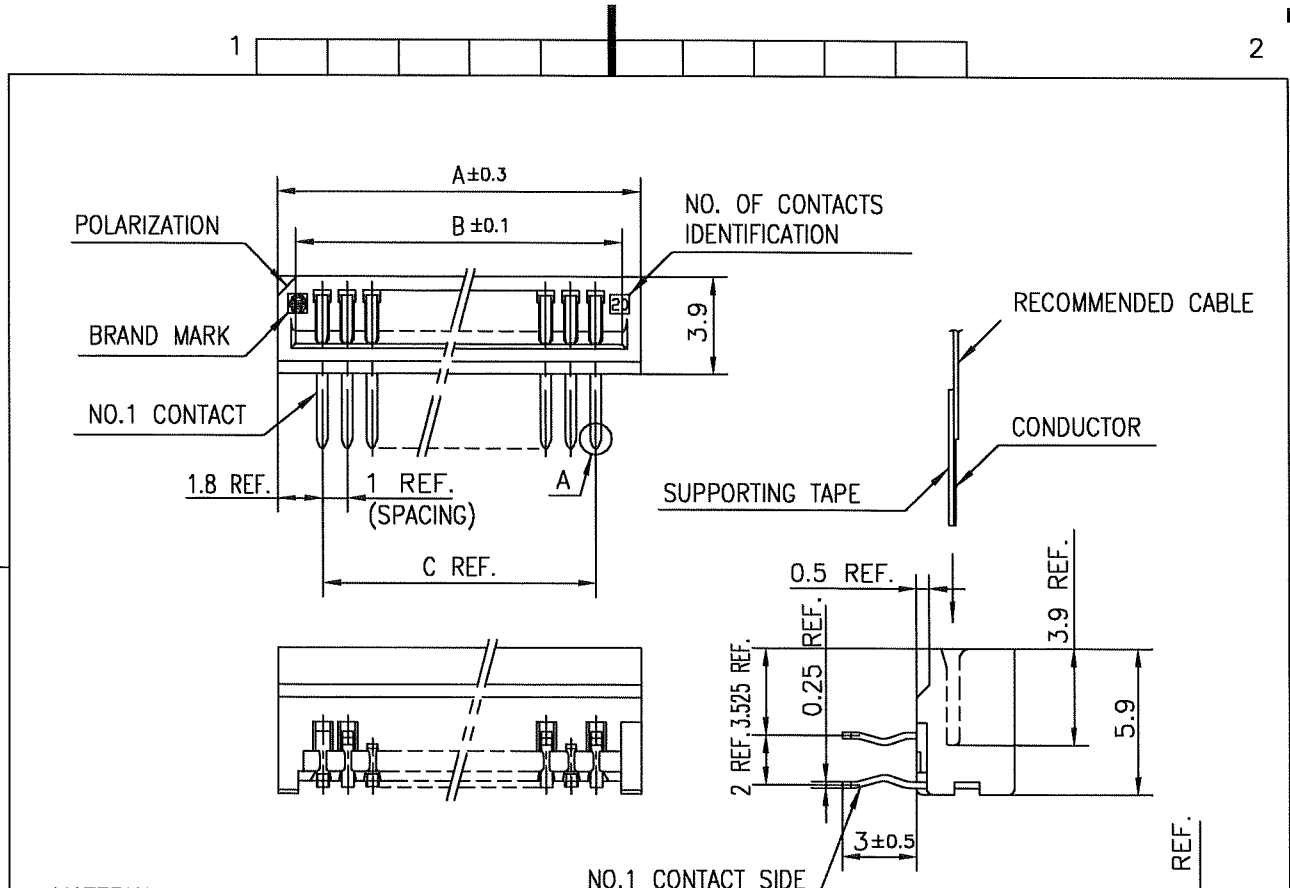
NO. OF CONTACTS (n)	CAT. NO.	CAT. NO.	DIMENSIONS (NOTE1)		
	RIGHT ANGLE TYPE	STRAIGHT TYPE	A ± 0.3	B ± 0.1	C
4	HLW 4R-2D7LF	HLW 4S-2D7LF	6.6	5.12	3.0
5	HLW 5R-2D7LF	HLW 5S-2D7LF	7.6	6.12	4.0
6	HLW 6R-2D7LF	HLW 6S-2D7LF	8.6	7.12	5.0
7	HLW 7R-2D7LF	HLW 7S-2D7LF	9.6	8.12	6.0
8	HLW 8R-2D7LF	HLW 8S-2D7LF	10.6	9.12	7.0
9	HLW 9R-2D7LF	HLW 9S-2D7LF	11.6	10.12	8.0
10	HLW10R-2D7LF	HLW10S-2D7LF	12.6	11.12	9.0
11	HLW11R-2D7LF	HLW11S-2D7LF	13.6	12.12	10.0
12	HLW12R-2D7LF	HLW12S-2D7LF	14.6	13.12	11.0
13	HLW13R-2D7LF	HLW13S-2D7LF	15.6	14.12	12.0
14	HLW14R-2D7LF	HLW14S-2D7LF	16.6	15.12	13.0
15	HLW15R-2D7LF	HLW15S-2D7LF	17.6	16.12	14.0
16	HLW16R-2D7LF	HLW16S-2D7LF	18.6	17.12	15.0
17	HLW17R-2D7LF	HLW17S-2D7LF	19.6	18.12	16.0
18	HLW18R-2D7LF	HLW18S-2D7LF	20.6	19.12	17.0
19	HLW19R-2D7LF	HLW19S-2D7LF	21.6	20.12	18.0
20	HLW20R-2D7LF	HLW20S-2D7LF	22.6	21.12	19.0
21	HLW21R-2D7LF	HLW21S-2D7LF	23.6	22.12	20.0
22	HLW22R-2D7LF	HLW22S-2D7LF	24.6	23.12	21.0
23	HLW23R-2D7LF	HLW23S-2D7LF	25.6	24.12	22.0
24	HLW24R-2D7LF	HLW24S-2D7LF	26.6	25.12	23.0
25	HLW25R-2D7LF	HLW25S-2D7LF	27.6	26.12	24.0
26	HLW26R-2D7LF	HLW26S-2D7LF	28.6	27.12	25.0
27	HLW27R-2D7LF	HLW27S-2D7LF	29.6	28.12	26.0
28	HLW28R-2D7LF	HLW28S-2D7LF	30.6	29.12	27.0
29	HLW29R-2D7LF	HLW29S-2D7LF	31.6	30.12	28.0
30	HLW30R-2D7LF	HLW30S-2D7LF	32.6	31.12	29.0
31	HLW31R-2D7LF	HLW31S-2D7LF	33.6	32.12	30.0
32	HLW32R-2D7LF	HLW32S-2D7LF	34.6	33.12	31.0



NOTES

1. SEE PART DRAWINGS FOR DIMENSIONS A~C.

mat'l. code				surface ⁵⁸ / tolerance ISO 406 ISO 1101		projection		product family 58PF/QF		CODE JP	
ltr	ecn no	dr	date	tolerances unless otherwise specified		mm		title CAT NO. TABLE FOR 1mm SPACING CONNECTOR (CAT NO. HLW__R/S-2D7LF)			
A	J05-0270	H.T	5/10/05	angles	linear	scale X		dwg no JSA 96409		sheet 1 of 1 size A4	
B	J06-0449	H.T	11/2/06	dr	engr	FCI		type Product Customer Drawing			
sheet index		revision sheet	B 1	chr	appd					Rev B	



MATERIAL

INSULATOR : PBT RESIN GLASS REINFORCED (UL94V-0)
 COLOR : BLACK
 CONTACT : PHOSPHOR BRONZE
 PLATING : TIN

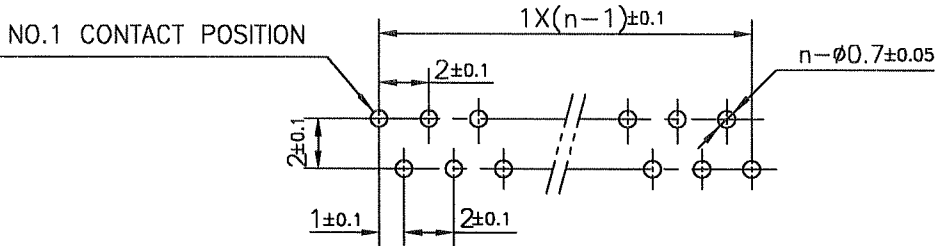
NOTE

1. THIS PRODUCT IS RIGHT ANGLE TYPE CONNECTOR.
2. THIS PRODUCT MEETS EUROPEAN UNION DIRECTIVES AND OTHER COUNTRY REGULATIONS AS DESCRIBED IN GS-22-008.
3. THE HOUSING WILL WITHSTAND EXPOSURE TO 260°C PEAK TEMPERATURE FOR 10 SECONDS IN A WAVE SOLDER APPLICATION WITH A 1.6mm THICK CIRCUIT BOARD.

RECOMMENDED PC BOARD

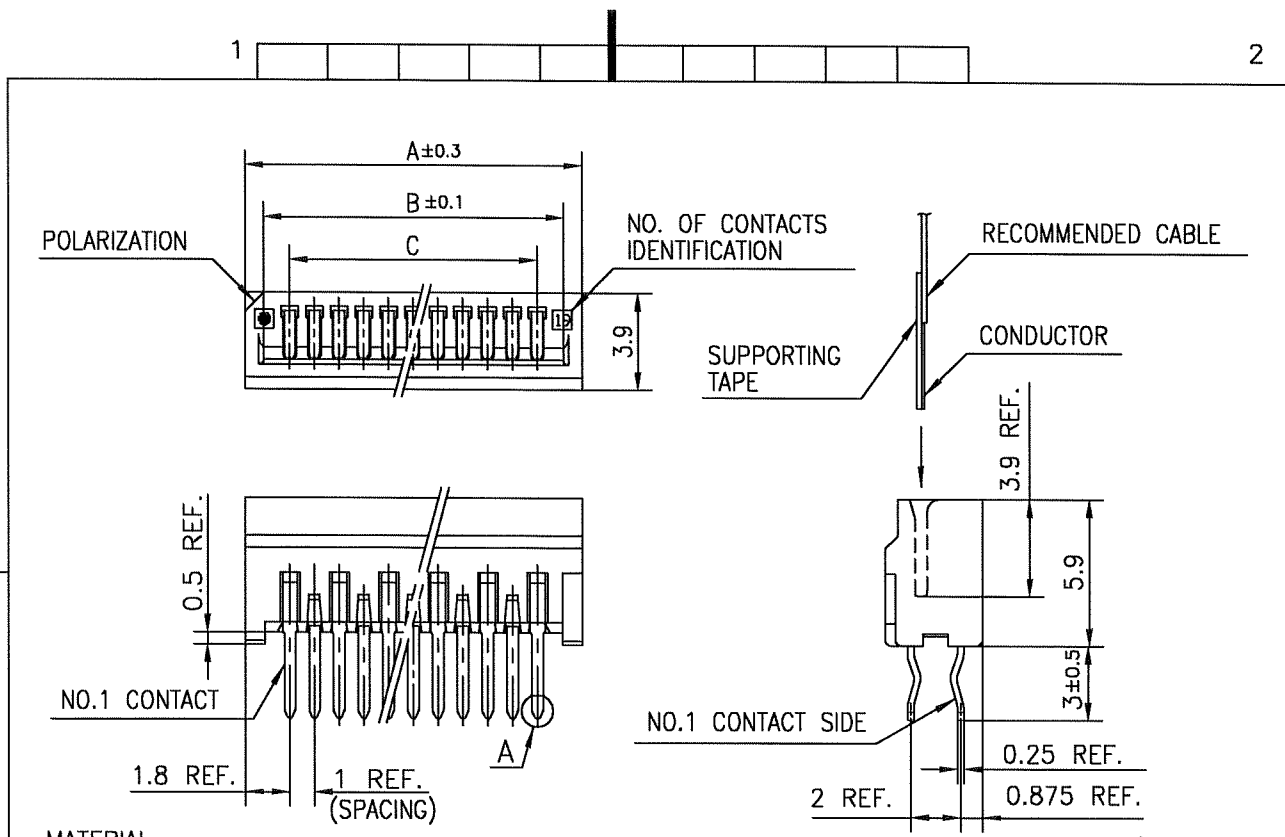
THICKNESS : 1.2~1.6
 HOLE PATTERN (COMPONENT SIDE)

n:NO.OF CONTACTS



mat'l. code				surface 58 / tolerance ISO 1302 / ISO 406 / ISO 1101		projection		product family 58PF		CODE JP	
ltr	ecn no	dr	date	tolerances unless otherwise specified		mm		title			
A	J05-0270	H.T	5/10/05	±0.2		mm		1mm SPACING CONNECTOR FOR FPC/FFC (CAT NO. HLW__R-2D7LF)			
B	J05-0735	H.T	10/28/05	angles	linear	mm					
C	J06-0449	H.T	11/2/06			scale X					
				dr	11/2/06			dwg no		sheet 1 of 1 size	
				enr	11/2/06			JSA 96410		A4	
				chr	11/2/06			type		Product Customer Drawing	
				appd	11/7/06						
sheet index		revision sheet		C 1						Rev. C	

SC-HLW05 JSA96409
 Form: A4



MATERIAL

INSULATOR : PBT RESIN GLASS REINFORCED (UL94V-0)
 COLOR : BLACK
 CONTACT : PHOSPHOR BRONZE
 PLATING : TIN

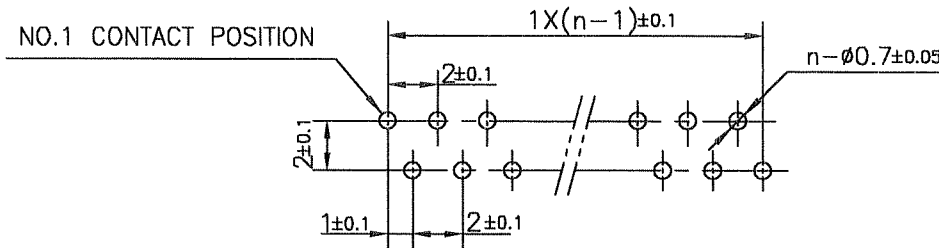
NOTE

- 1.THIS PRODUCT IS STRAIGHT TYPE CONNECTOR.
- 2.THIS PRODUCT MEETS EUROPEAN UNION DIRECTIVES AND OTHER COUNTRY REGULATIONS AS DESCRIBED IN GS-22-008.
- 3.THE HOUSING WILL WITHSTAND EXPOSURE TO 260°C PEAK TEMPERATURE FOR 10 SECONDS IN A WAVE SOLDER APPLICATION WITH A 1.6mm THICK CIRCUIT BOARD.

RECOMMENDED PC BOARD

THICKNESS : 1.2~1.6
 HOLE PATTERN (COMPONENT SIDE)

n:NO.OF CONTACTS

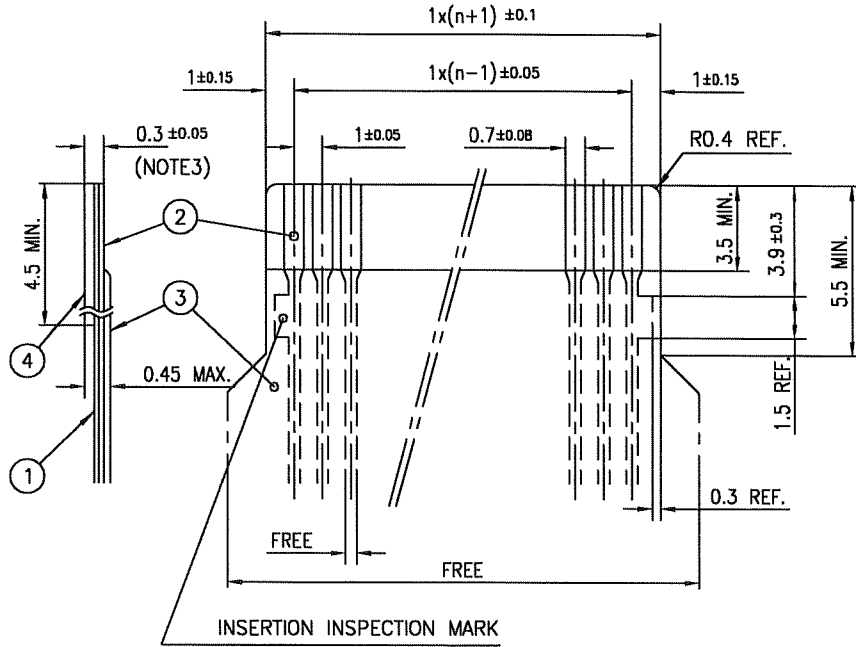


mat'l. code				surface 58 / ISO 1302 ✓		tolerance ISO 406 / ISO 1101		projection		product family 58QF		CODE JP	
ltr	ecn no	dr	date	tolerances unless otherwise specified				mm		title			
A	J05-0270	H.T	5/10/05	angles		±0.2		mm		1mm SPACING CONNECTOR FOR FPC/FFC (CAT NO. HLW__S-2D7LF)			
B	J05-0735	H.T	10/28/05	linear				scale X					
C	J06-0449	H.T	11/2/06							dwg no		sheet 1 of 1 size	
				dr		11/2/06				JSA 96411		A4	
				enrg		11/2/06				type		Product Customer Drawing	
				chr		11/2/06							
				appd		11/2/06							
sheet index		revision sheet		C		1						Rev. C	

SC-HLW05 JSA96409 form: A4

RECOMMENDED CABLE (FPC)

n : NO. OF CONDUCTORS



PT. NO.	DESCRIPTION	MATERIAL	THICKNESS (μm)
1	BASE FILM	POLYIMIDE OR POLYESTER OR EQUIVALENT	25
2	CONDUCTOR	COPPER FOIL (PLATING : SOLDER 1μm MIN.)	35
3	OVERLAY	POLYIMIDE OR POLYESTER OR EQUIVALENT	—
4	SUPPORTING TAPE	POLYESTER OR POLYIMIDE OR EQUIVALENT	188

NOTES

1. NO BURR AT EACH PORTION.
2. NO PEELING IN COMMON USE.
3. TOTAL THICKNESS LIMIT OF EACH MATERIAL (INCLUDING ADHESIVE AGENT) IS SPECIFIED.

mat'l. code				surface 58 / tolerance ISO 406 ISO 1101		projection		product family 58PF/QF		CODE JP	
ltr ecn no dr date				tolerances unless otherwise specified		mm		title			
AA J05-0270 H.T 5/11/05				angles linear		mm		RECOMMENDED CABLE (FPC)			
AB J06-0449 H.T 11/2/06						scale X		(Cat. No. HLW__R/S-___)			
				dr		FCI		dwg no		sheet 1 of 1 size	
				engr				JSA 93382		A4	
				chr				type Product Customer Drawing			
				appd							
sheet index		revision sheet		AB 1						Rev. AB	

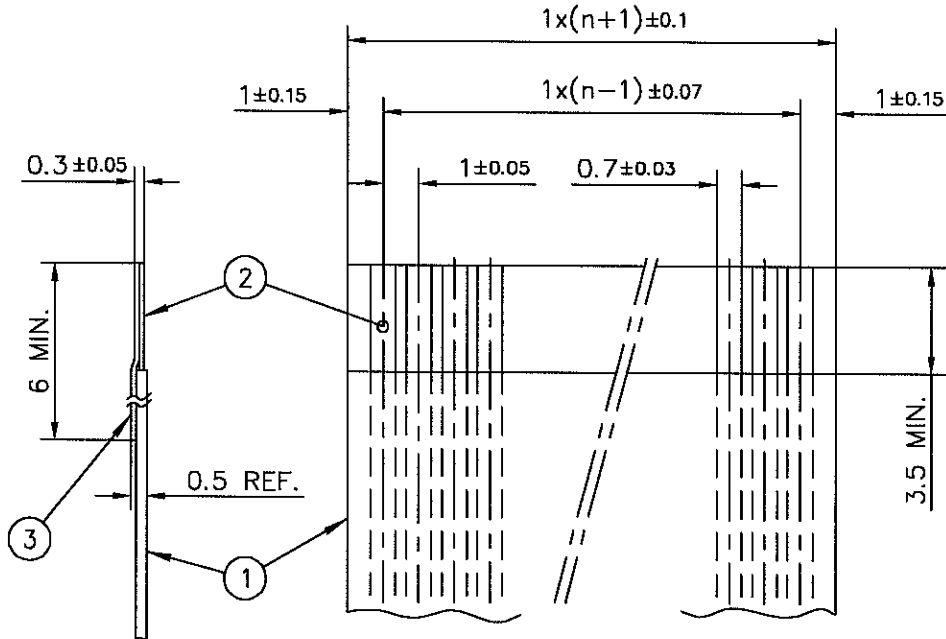


FCIconnect.com

Copyright FCI.

RECOMMENDED CABLE (FFC)

n : NO. OF CONDUCTORS



PT. NO.	DESCRIPTION	MATERIAL	NOTE
1	INSULATOR	FLAME RESISTING POLYESTER OR EQUIVALENT	_____
2	CONDUCTOR	COPPER FOIL	PLATING : TIN OR SOLDER 1 μm MIN.
3	SUPPORTING TAPE	FLAME RESISTING POLYESTER OR EQUIVALENT	_____

NOTES

1. NO BURR AT EACH PORTION.
2. NO PEELING IN COMMON USE.

mat'l. code				surface 58 / tolerance ISO 1302 / ISO 406 / ISO 1101		projection		product family 58PF/QF		CODE JP	
litr ecn no dr date				tolerances unless otherwise specified		mm		title			
AA J05-0270 H.T 5/11/05				angles linear		mm		RECOMMENDED CABLE (FFC)			
AB J06-0449 H.T 11/2/06						scale X		(Cat. No. HLW__R/S-__)			
				dr 11/2/06		FCI		dwg no sheet 1 of 1 size			
				enrg 11/2/06				JSA 93383		A4	
				chr R. Shouji 11/2/06				type Product Customer Drawing			
				appd S. De.dan 11/2/06							
sheet index		revision sheet		AB 1						Rev AB	

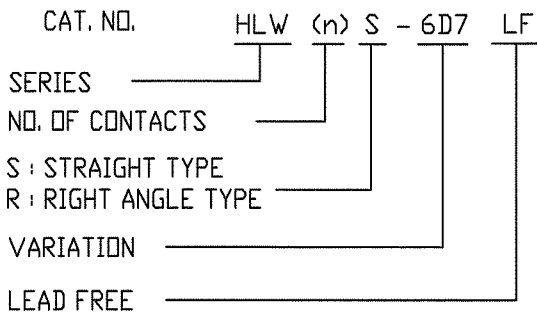
CAT. NO. & DIMENSIONS

NO. OF CONTACTS (n)	CAT. NO.		DIMENSIONS (NOTE1)		
	STRAIGHT TYPE	RIGHT ANGLE TYPE	A ± 0.3	B ± 0.1	C
4	HLW 4S-6D7LF	HLW 4R-6D7LF	6.6	5.12	3.0
5	HLW 5S-6D7LF	HLW 5R-6D7LF	7.6	6.12	4.0
6	HLW 6S-6D7LF	HLW 6R-6D7LF	8.6	7.12	5.0
7	HLW 7S-6D7LF	HLW 7R-6D7LF	9.6	8.12	6.0
8	HLW 8S-6D7LF	HLW 8R-6D7LF	10.6	9.12	7.0
9	HLW 9S-6D7LF	HLW 9R-6D7LF	11.6	10.12	8.0
10	HLW 10S-6D7LF	HLW 10R-6D7LF	12.6	11.12	9.0
11	HLW 11S-6D7LF	HLW 11R-6D7LF	13.6	12.12	10.0
12	HLW 12S-6D7LF	HLW 12R-6D7LF	14.6	13.12	11.0
13	HLW 13S-6D7LF	HLW 13R-6D7LF	15.6	14.12	12.0
14	HLW 14S-6D7LF	HLW 14R-6D7LF	16.6	15.12	13.0
15	HLW 15S-6D7LF	HLW 15R-6D7LF	17.6	16.12	14.0
16	HLW 16S-6D7LF	HLW 16R-6D7LF	18.6	17.12	15.0
17	HLW 17S-6D7LF	HLW 17R-6D7LF	19.6	18.12	16.0
18	HLW 18S-6D7LF	HLW 18R-6D7LF	20.6	19.12	17.0
19	HLW 19S-6D7LF	HLW 19R-6D7LF	21.6	20.12	18.0
20	HLW 20S-6D7LF	HLW 20R-6D7LF	22.6	21.12	19.0
21	HLW 21S-6D7LF	HLW 21R-6D7LF	23.6	22.12	20.0
22	HLW 22S-6D7LF	HLW 22R-6D7LF	24.6	23.12	21.0
23	HLW 23S-6D7LF	HLW 23R-6D7LF	25.6	24.12	22.0
24	HLW 24S-6D7LF	HLW 24R-6D7LF	26.6	25.12	23.0
25	HLW 25S-6D7LF	HLW 25R-6D7LF	27.6	26.12	24.0
26	HLW 26S-6D7LF	HLW 26R-6D7LF	28.6	27.12	25.0
27	HLW 27S-6D7LF	HLW 27R-6D7LF	29.6	28.12	26.0
28	HLW 28S-6D7LF	HLW 28R-6D7LF	30.6	29.12	27.0
29	HLW 29S-6D7LF	HLW 29R-6D7LF	31.6	30.12	28.0
30	HLW 30S-6D7LF	HLW 30R-6D7LF	32.6	31.12	29.0
31	HLW 31S-6D7LF	HLW 31R-6D7LF	33.6	32.12	30.0
32	HLW 32S-6D7LF	HLW 32R-6D7LF	34.6	33.12	31.0



FCIconnect.com

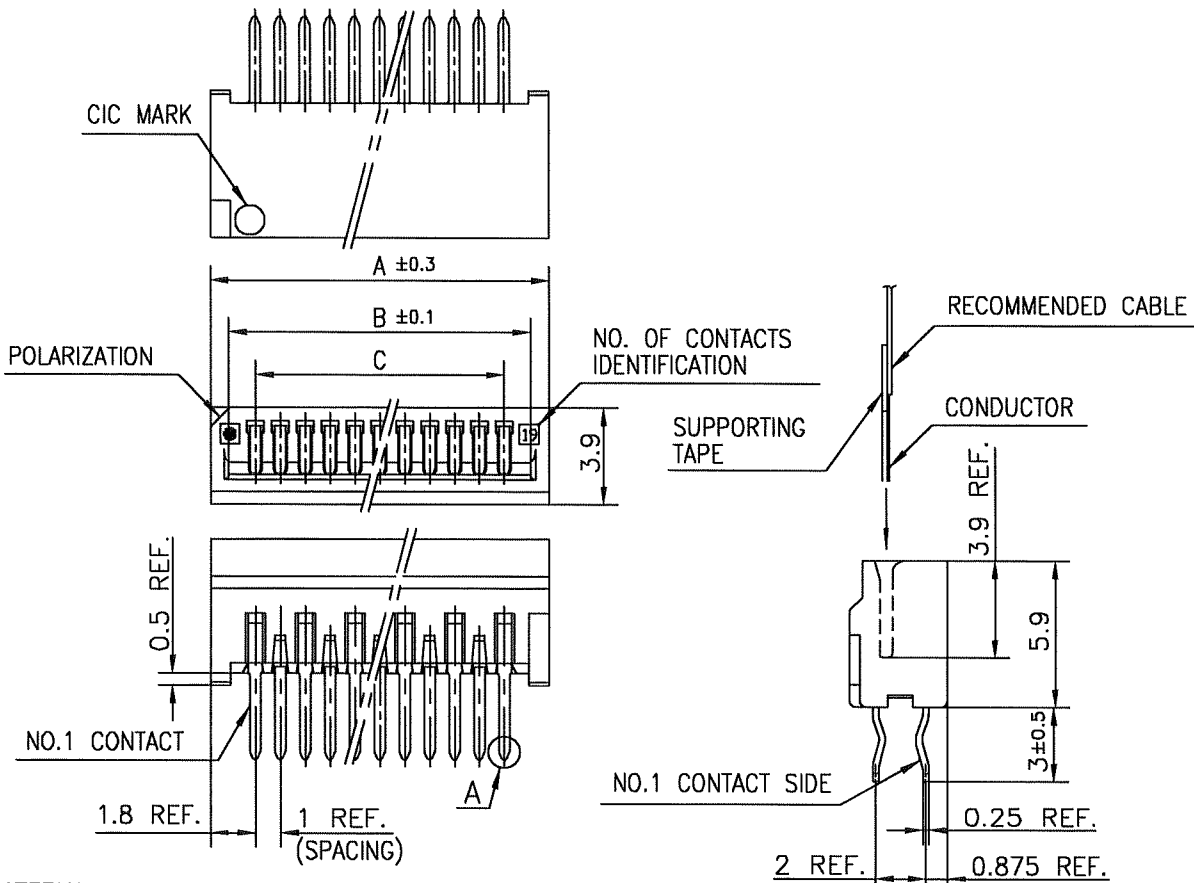
Copyright FCI.



NOTES

1. SEE PART DRAWINGS FOR DIMENSIONS A~C.

mat'l. code -				surface 58 / tolerance ISO 1302 / ISO 406 / ISO 1101		projection		product family 58PF/58QF		CODE JP	
ltr ecn no dr date				tolerances unless otherwise specified		mm		title			
A J05-0270 H.T 5/10/05				angles linear		mm		CAT NO. TABLE FOR 1mm SPACING CONNECTOR (CAT NO. HLW__R/S-6D7LF)			
B J06-0238 M.M 6/8/06						scale X		dwg no		sheet 1 of 1 size	
C J09-0255 M.Y 2009-6-29						FCI		JSA 96412		A4	
				dr M.YAMAGUCHI 2009-6-29				type Product Customer Drawing			
				engr M.YAMAGUCHI 2009-6-29							
				chr S. W. Chai 2009-6-29							
				appd P. Nudwin 2009-6-29							
sheet index		revision sheet		C 1						Rev. C	



MATERIAL

INSULATOR : PBT RESIN GLASS REINFORCED (UL94V-0)
 COLOR : BLACK
 CONTACT : PHOSPHOR BRONZE
 PLATING : TIN

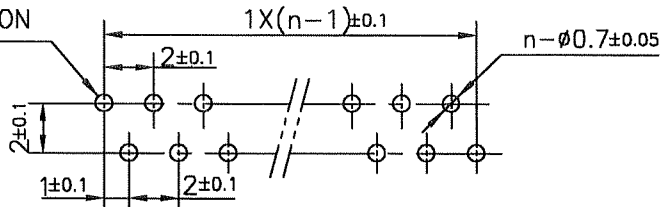
NOTE

- 1.THIS PRODUCT IS STRAIGHT TYPE CONNECTOR.
- 2.THIS PRODUCT MEETS EUROPEAN UNION DIRECTIVES AND OTHER COUNTRY REGULATIONS AS DESCRIBED IN GS-22-008.
- 3.THE HOUSING WILL WITHSTAND EXPOSURE TO 260°C PEAK TEMPERATURE FOR 10 SECONDS IN A WAVE SOLDER APPLICATION WITH A 1.6mm THICK CIRCUIT BOARD.

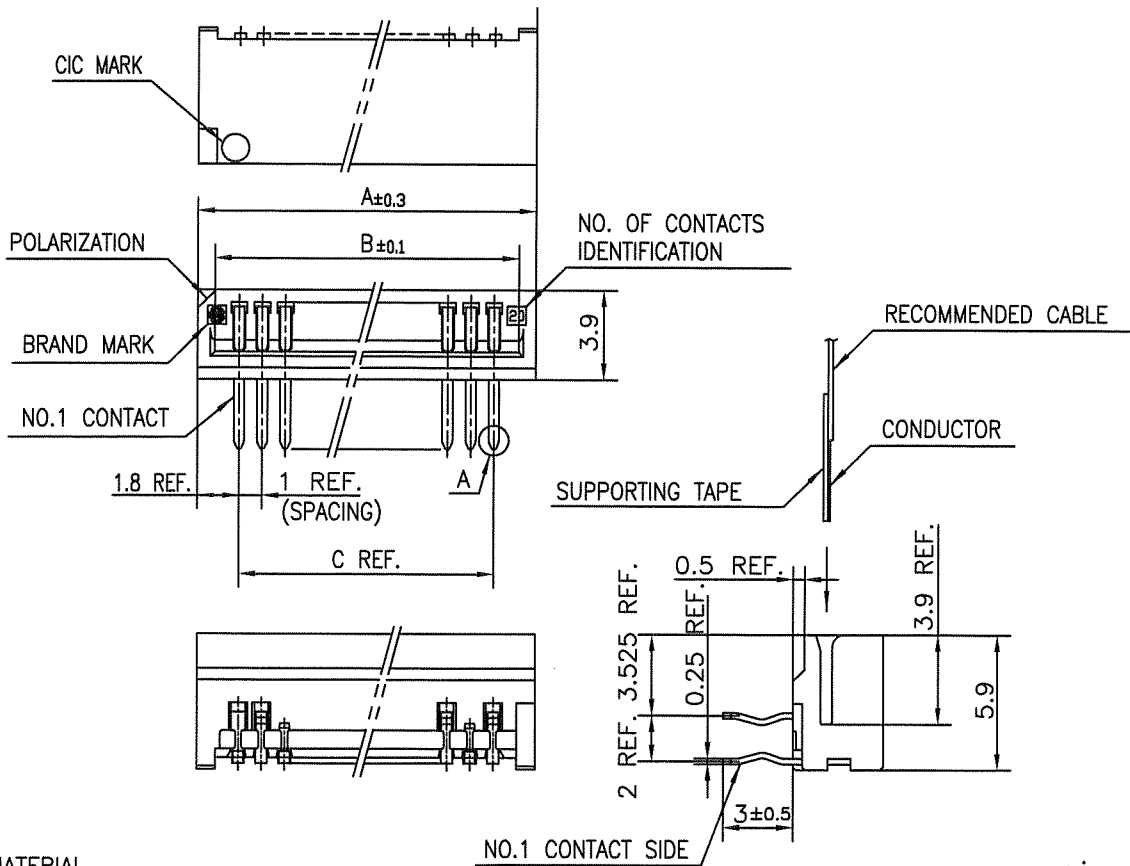
RECOMMENDED PC BOARD

THICKNESS : 1.2~1.6
 HOLE PATTERN (COMPONENT SIDE)

NO.1 CONTACT POSITION



mat'l. code				surface 58 / tolerance ISO 406 / ISO 1101		projection		product family 58QF		CODE JP	
ltr	ecn no	dr	date	tolerances unless otherwise specified		mm		title			
A	J05-0270	H.T	5/10/05	±0.2		mm		1mm SPACING CONNECTOR FOR CIC (CAT NO. HLW__S-6D7LF)			
B	J05-0735	H.T	10/28/05	linear		scale X		dwg no sheet 1 of 1 size			
C	J06-0449	H.T	11/2/06			FCI		JSA 96413 A4			
				dr		11/2/06		type Product Customer Drawing			
				enr		11/2/06					
				chr		11/2/06					
				appd		11/2/06					
sheet index		revision sheet		C 1						Rev. C	

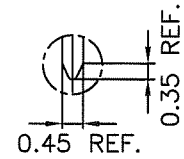


MATERIAL

INSULATOR : PBT RESIN GLASS REINFORCED (UL94V-0)
 COLOR : BLACK
 CONTACT : PHOSPHOR BRONZE
 PLATING : TIN

NOTE

1. THIS PRODUCT IS RIGHT ANGLE TYPE CONNECTOR.
2. THIS PRODUCT MEETS EUROPEAN UNION DIRECTIVES AND OTHER COUNTRY REGULATIONS AS DESCRIBED IN GS-22-008.
3. THE HOUSING WILL WITHSTAND EXPOSURE TO 260°C PEAK TEMPERATURE FOR 10 SECONDS IN A WAVE SOLDER APPLICATION WITH A 1.6mm THICK CIRCUIT BOARD.

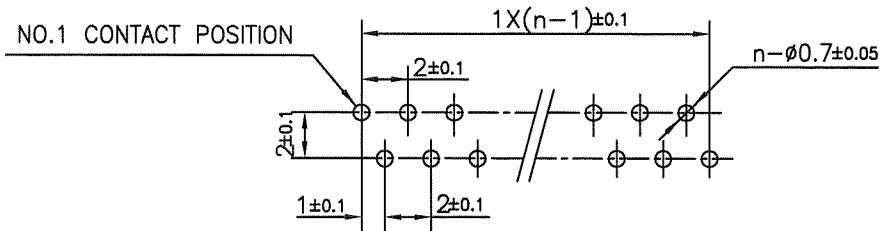


DETAIL A

RECOMMENDED PC BOARD

THICKNESS : 1.2~1.6
 HOLE PATTERN (COMPONENT SIDE)

n:NO.OF CONTACTS



mat'l. code				surface 58 / tolerance ISO 1302 / ISO 406 / ISO 1101		projection		product family		CODE	
-				tolerances unless otherwise specified		mm		58PF		JP	
ltr	ecn no	dr	date	angles	linear	mm		title			
A	J06-0238	M.M	6/8/'06			mm		1mm SPACING CONNECTOR FOR CIC (CAT NO. HLW__R-6D7LF)			
B	J09-0255	M.Y	2009-6-29			scale %		dwg no			
						%		sheet 1 of 1		size	
				dr	M.YAMASHITA	2009-6-29	FCJ	JSA 97169		A4	
				enr	M.YAMASHITA	2009-6-29		type Product Customer Drawing			
				chr	S. W. H. L.	2009-6-29					
				appd	S. W. H. L.	2009-6-29					
sheet index	revision	B									Rev. B
	sheet	1									

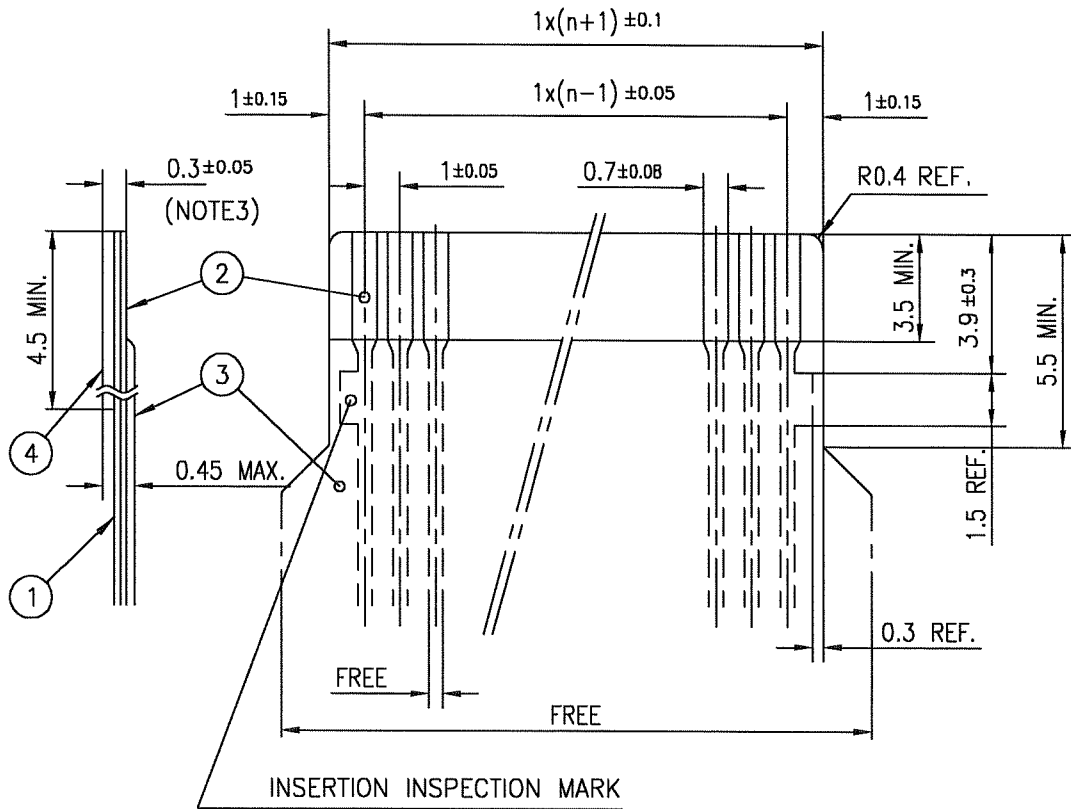


FCJconnect.com

Copyright FCI.

RECOMMENDED CABLE (CIC)

n : NO. OF CONDUCTORS



PT. NO.	DESCRIPTION	MATERIAL	THICKNESS (μm)	
1	BASE FILM	POLYESTER OR EQUIVALENT	75	25
2	CONDUCTOR	CARBON PASTE OVER SILVER PASTE	10 MIN.	
3	OVERLAY	POLYIMIDE OR POLYESTER OR EQUIVALENT	—	
4	SUPPORTING TAPE	POLYESTER OR POLYIMIDE OR EQUIVALENT	188	250

NOTES

1. NO BURR AT EACH PORTION.
2. NO PEELING IN COMMON USE.
3. TOTAL THICKNESS LIMIT OF EACH MATERIAL (INCLUDING ADHESIVE AGENT) IS SPECIFIED.

mat'l. code				surface ISO 1302 ✓		tolerance ISO 406 ✓ ISO 1101		projection		product family 58PF/QF		CODE JP			
ltr ecn no dr date				tolerances unless otherwise specified				mm		title					
AA J05-0270 H.T 5/11/05				angles linear				scale X		RECOMMENDED CABLE (CIC) (Cat. No. HLW__R/S-__)					
AB J06-0449 H.T 11/2/06				dr <i>H. Saito</i> 11/2/06						dwg no		sheet 1 of 1		size	
				enr <i>H. Saito</i> 11/2/06						JSA 93626		A4			
				chr <i>K. Shouji</i> 11/2/06						type Product Customer Drawing					
				appd <i>S. Nakano</i> 11/7/06											
sheet index		revision sheet		AB 1								Rev. AB			



FCIconnect.com

Copyright FCI.



Компания «ЭлектроПласт» предлагает заключение долгосрочных отношений при поставках импортных электронных компонентов на взаимовыгодных условиях!

Наши преимущества:

- Оперативные поставки широкого спектра электронных компонентов отечественного и импортного производства напрямую от производителей и с крупнейших мировых складов;
- Поставка более 17-ти миллионов наименований электронных компонентов;
- Поставка сложных, дефицитных, либо снятых с производства позиций;
- Оперативные сроки поставки под заказ (от 5 рабочих дней);
- Экспресс доставка в любую точку России;
- Техническая поддержка проекта, помощь в подборе аналогов, поставка прототипов;
- Система менеджмента качества сертифицирована по Международному стандарту ISO 9001;
- Лицензия ФСБ на осуществление работ с использованием сведений, составляющих государственную тайну;
- Поставка специализированных компонентов (Xilinx, Altera, Analog Devices, Intersil, Interpoint, Microsemi, Aeroflex, Peregrine, Syfer, Eurofarad, Texas Instrument, Miteq, Cobham, E2V, MA-COM, Hittite, Mini-Circuits, General Dynamics и др.);

Помимо этого, одним из направлений компании «ЭлектроПласт» является направление «Источники питания». Мы предлагаем Вам помощь Конструкторского отдела:

- Подбор оптимального решения, техническое обоснование при выборе компонента;
- Подбор аналогов;
- Консультации по применению компонента;
- Поставка образцов и прототипов;
- Техническая поддержка проекта;
- Защита от снятия компонента с производства.



Как с нами связаться

Телефон: 8 (812) 309 58 32 (многоканальный)

Факс: 8 (812) 320-02-42

Электронная почта: org@eplast1.ru

Адрес: 198099, г. Санкт-Петербург, ул. Калинина, дом 2, корпус 4, литера А.