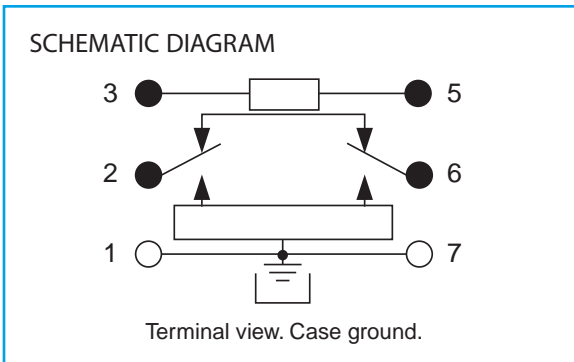




HIGH REPEATABILITY ULTRAMINIATURE BROADBAND ATTENUATOR RELAYS

SERIES GA152

| SERIES DESIGNATION | RELAY TYPE |
|--------------------|-------------------------|
| GA152 | Attenuator relay series |



DESCRIPTION

The Series GA152 highly repeatable ultraminiature attenuator relays are designed for attenuating RF signals in 50-ohm systems over a frequency range from DC to 5 GHz. Their low profile and small grid spacing makes them ideal for use when packaging density is a prime consideration. The GA152 relays eliminate the need for additional external resistors/attenuators.

These single section, switchable attenuator relays have an internal matched thin film attenuator pad in a "Pi" configuration. Relays are available in a fixed increment of 20 dB.

The GA152 attenuator relay features:

- High repeatability.
- Unique uni-frame motor design which provides high magnetic efficiency and mechanical rigidity.
- Minimum mass components and welded construction for maximum resistance to shock and vibration.
- Advanced cleaning techniques which assures internal cleanliness.
- Gold plated, precious metal contacts, which provide excellent intermodulation performance.
- Flat amplitude vs. frequency response.
- High isolation between control and signal path.
- Stable attenuation vs. temperature.
- Excellent phase linearity.
- Highly resistant to ESD.

Patent No. 5,315,273

| ENVIRONMENTAL AND PHYSICAL SPECIFICATIONS | | |
|---|-----------|-----------------------|
| Temperature (Ambient) | Storage | -65°C to +125°C |
| | Operating | -55°C to +85°C |
| Vibration (General Note 1) | | 10 g's to 500 Hz |
| Shock (General Note 1) | | 30 g's, 6ms half sine |
| Enclosure | | Hermetically sealed |
| Weight | | 0.11 oz. (3.2g) max. |

SERIES GA152

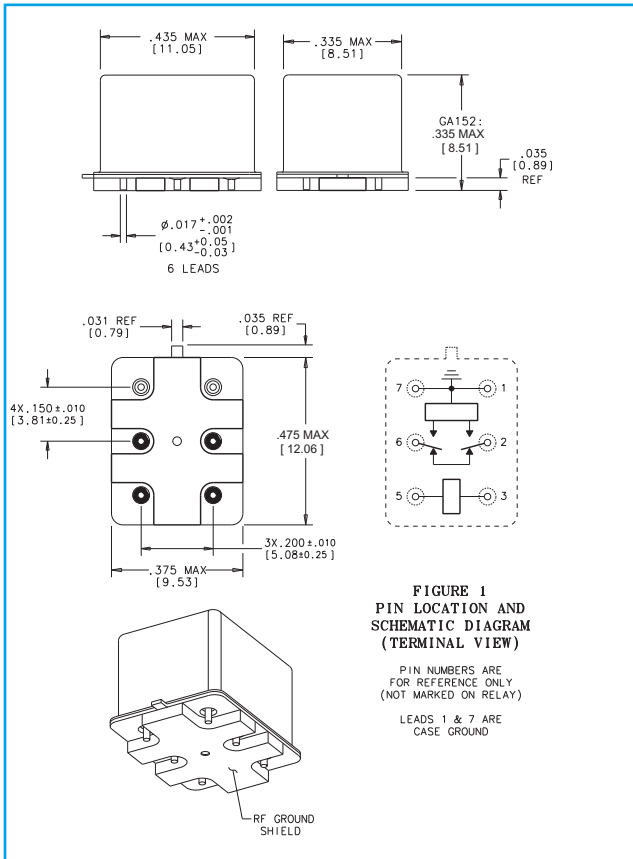
GENERAL PERFORMANCE (-55°C to +85°C, unless otherwise specified)

| PARAMETER | MINIMUM | TYPICAL | MAXIMUM | UNITS |
|------------------------------|---------|---------|---------|-------|
| Operating Frequency (Note 2) | 0.0 | | 5.0 | GHz |
| Power (Notes 5 and 6) | | | 1.0 | Watt |
| Impedance | | 50 | | Ohms |

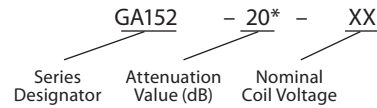
ELECTRICAL SPECIFICATION (-55°C to +85°C, unless otherwise specified)

| PART NUMBER (Note 7) | | GA152-dB-5 | GA152-dB-12 | GA152-dB-15 | GA152-dB-26 |
|----------------------------|-------|---|-------------|-------------|-------------|
| Coil Voltage Vdc (Note 6) | Nom. | 5 | 12 | 15 | 26.5 |
| | Max. | 5.8 | 16.0 | 20.0 | 32.0 |
| Coil Resistance Ohms ±20% | @25°C | 50 | 390 | 610 | 1560 |
| Pick-up Voltage Vdc Max. | @25°C | 3.8 | 9.0 | 11.3 | 18.0 |
| Switching Time ms (Note 8) | Max. | 4.0 | | | |
| | Typ. | 2.0 | | | |
| Insulation Resistance | | 1,000 MΩ typical (all mutually isolated points) | | | |
| Dielectric Strength | | 300 VRMS / 60 Hz typical (at sea level) | | | |

OUTLINE DIMENSIONS



TELEDYNE RELAYS PART NUMBERING SYSTEM FOR GA152 ATTENUATOR RELAYS



*Contact factory for additional attenuation values

GENERAL NOTES

1. Contacts will exhibit no contact chatter in excess of 10 μs or transfer in excess of 1 μs.
2. Relays may be operated at higher frequencies with reduced RF performance.
3. For optimal RF performance, solder case to RF ground plane.
4. Attenuation values shown are with reference to the through path (low loss state).
5. Power handling for case temperatures of -55°C to +55°C is 1 Watt. Derate power handling 25 mW/°C above +55°C. Case measurement point is adjacent to the relay tab.
6. Do not operate coil at maximum coil voltage continuously.
7. Insert attenuation value, see part numbering system.
8. Switching time includes bounce.
9. The slash and characters appearing after the slash are not marked on the relay.
10. Unless otherwise specified, relays will be supplied with either gold-plated or solder-coated leads.

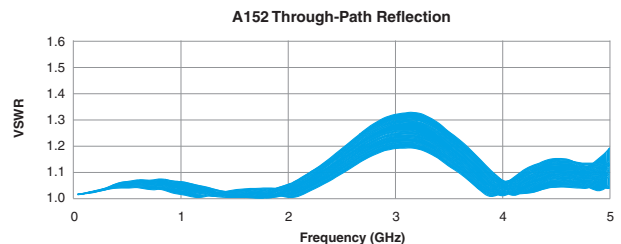
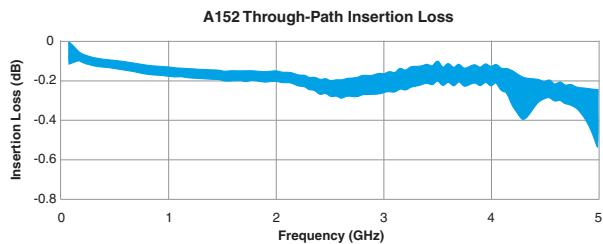
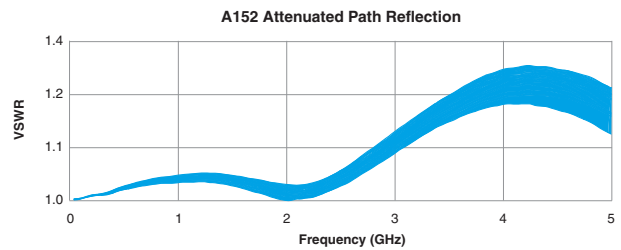
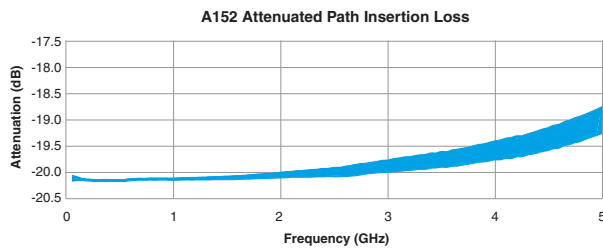
RF PERFORMANCE (-55°C to +85°C, unless otherwise specified) (Notes 2, 3 and 4)

| PARAMETER | MINIMUM | TYPICAL | MAXIMUM | UNITS | CONDITION |
|------------------------|-----------|---------|---------|-------|-----------|
| Insertion Loss | | 0.1 | 0.25 | dB | DC-1 GHz |
| | | 0.2 | 0.35 | dB | 1-2 GHz |
| | | 0.3 | .055 | dB | 2-3 GHz |
| | See graph | | | | 3-5 GHz |
| VSWR (Through path) | | 1.10 | 1.20 | | DC-1 GHz |
| | | 1.20 | 1.25 | | 1-2 GHz |
| | | 1.25 | 1.30 | | 2-3 GHz |
| | See graph | | | | 3-5 GHz |
| VSWR (Attenuated path) | | 1.20 | 1.25 | | DC-1 GHz |
| | | 1.30 | 1.35 | | 1-2 GHz |
| | | 1.40 | 1.45 | | 2-3 GHz |
| | See graph | | | | 3-5 GHz |

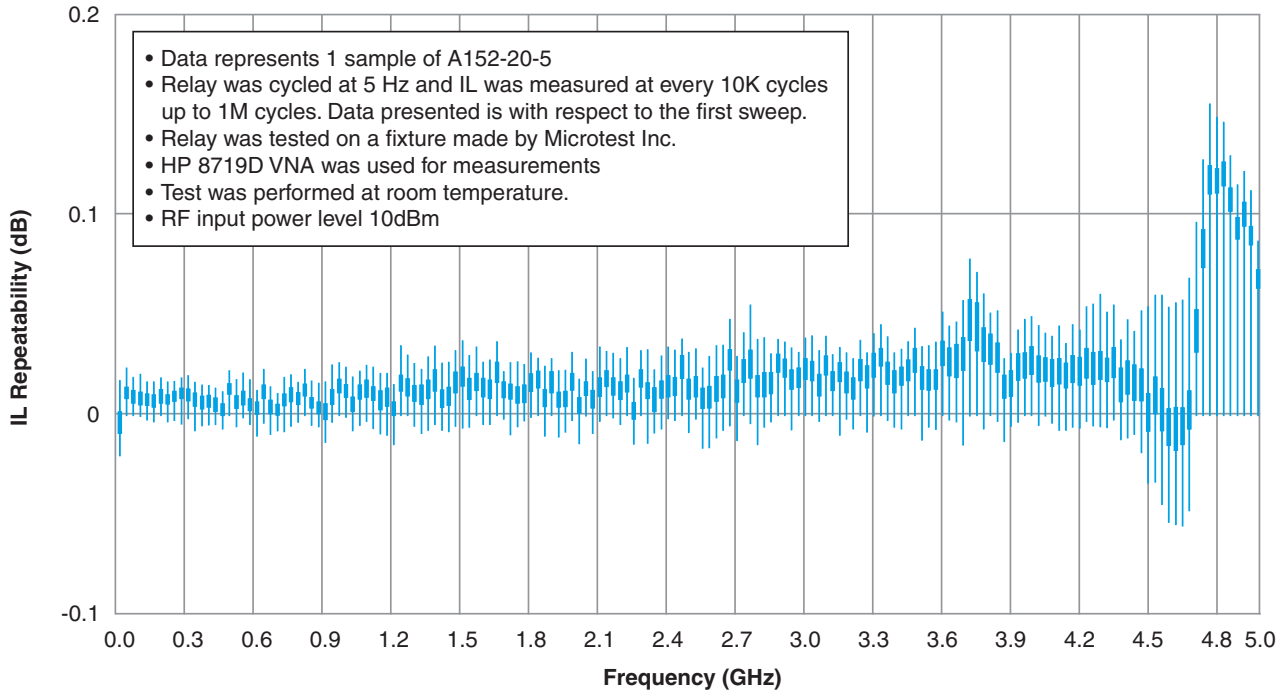
| ATTENUATION | MINIMUM | TYPICAL | MAXIMUM | UNITS | CONDITION |
|-------------|-----------|---------|---------|-------|-----------|
| 20 | 19.8 | 20.0 | 20.2 | dB | DC-1 GHz |
| | 19.6 | 20.0 | 20.4 | dB | 1-2 GHz |
| | 19.0 | 20.0 | 21.0 | dB | 2-3 GHz |
| | See graph | | | | 3-5 GHz |

Contact factory for additional attenuation values

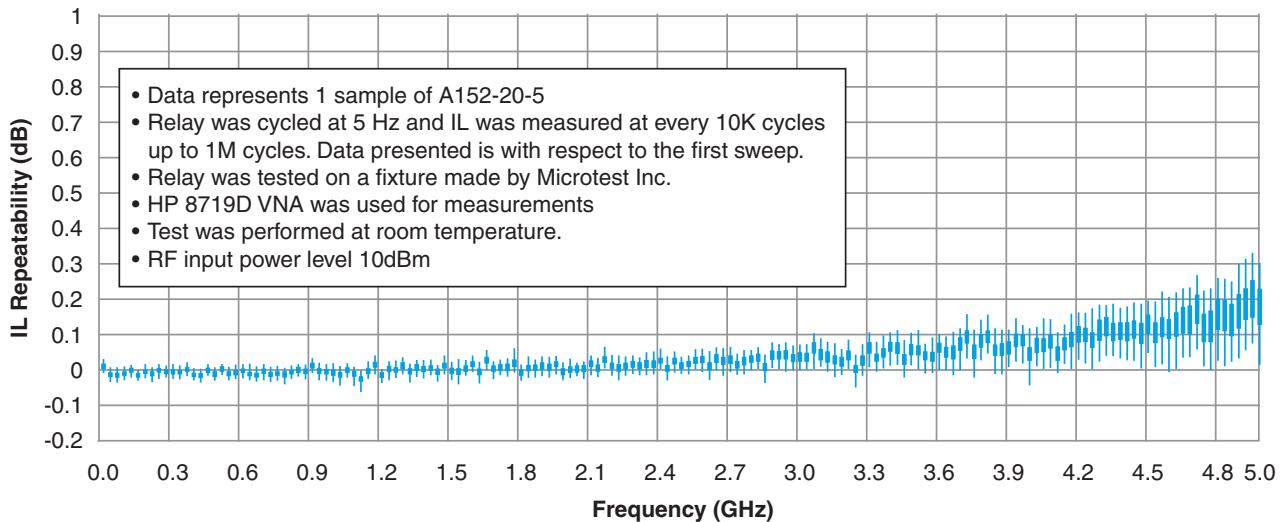
SERIES GA152
TYPICAL RF PERFORMANCE (Notes 3 and 4)



A152 Insertion Loss Repeatability (Through Path)



A152 Insertion Loss Repeatability (Attenuated Path)



RF INSERTION LOSS REPEATABILITY NOTES

1. RF Performance shown is for A152. GA152 RF Data is TBD. RF Performance is the same or better than A152.
2. Test conditions:
 - a. Fixture: Custom plug-in test fixture.
 - b. Relay header is in contact with, but not soldered to, ground plane.
 - c. Test performed at room ambient temperature.
 - d. Contact signal level: 10 dBm.
3. Data presented herein represents typical characteristics and is not intended for use as specification limits.
4. Insertion loss repeatability measured over frequency range from 3 MHz to 5 GHz.



Компания «ЭлектроПласт» предлагает заключение долгосрочных отношений при поставках импортных электронных компонентов на взаимовыгодных условиях!

Наши преимущества:

- Оперативные поставки широкого спектра электронных компонентов отечественного и импортного производства напрямую от производителей и с крупнейших мировых складов;
- Поставка более 17-ти миллионов наименований электронных компонентов;
- Поставка сложных, дефицитных, либо снятых с производства позиций;
- Оперативные сроки поставки под заказ (от 5 рабочих дней);
- Экспресс доставка в любую точку России;
- Техническая поддержка проекта, помощь в подборе аналогов, поставка прототипов;
- Система менеджмента качества сертифицирована по Международному стандарту ISO 9001;
- Лицензия ФСБ на осуществление работ с использованием сведений, составляющих государственную тайну;
- Поставка специализированных компонентов (Xilinx, Altera, Analog Devices, Intersil, Interpoint, Microsemi, Aeroflex, Peregrine, Syfer, Eurofarad, Texas Instrument, Miteq, Cobham, E2V, MA-COM, Hittite, Mini-Circuits, General Dynamics и др.);

Помимо этого, одним из направлений компании «ЭлектроПласт» является направление «Источники питания». Мы предлагаем Вам помощь Конструкторского отдела:

- Подбор оптимального решения, техническое обоснование при выборе компонента;
- Подбор аналогов;
- Консультации по применению компонента;
- Поставка образцов и прототипов;
- Техническая поддержка проекта;
- Защита от снятия компонента с производства.



Как с нами связаться

Телефон: 8 (812) 309 58 32 (многоканальный)

Факс: 8 (812) 320-02-42

Электронная почта: org@eplast1.ru

Адрес: 198099, г. Санкт-Петербург, ул. Калинина, дом 2, корпус 4, литера А.