

SOLAR SPEC Pak[®]

Sealed Power For Environmental Connections



Solar Power | Wind Power | DC Lighting | Inverters | Micro Inverters | Battery Back up
LED Lighting | Solar Panels | Combiner Boxes | Hydro-Electricity | Harsh Environments



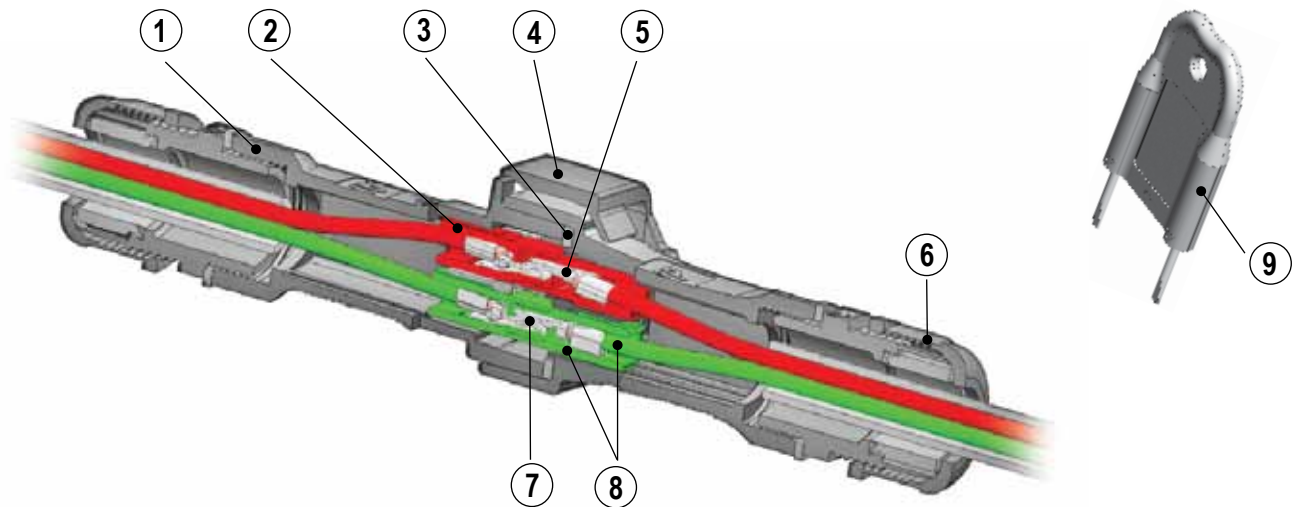
APP
Anderson Power Products[®]

Rugged and Sealed (IP68) Plugs and Receptacles

For Use with APP® Powerpole® Signal, Power & Ground Contacts & Housings

APP's Solar SPEC Pak® Connector Series uses rugged and environmentally sealed (IP68) shells to protect industry leading APP® Powerpole® contacts and housing. Customer configured Solar SPEC Pak® is designed specifically to meet the requirements of the photovoltaic industry conforming to NEC 2008 requirements for first make/last break ground and a locking feature that require a tool to unlock. It's also the first multipole connector to conform to UL 6703A. The adaptive design lends itself towards use in other markets including wind power, fuel cells, mass transportation, off-road vehicles, agricultural equipment, oil and petro chemical exploration and many more.

The core APP® Powerpole® technology within the SPEC Pak® is proven reliable and cost effective. The broad selection of touch safe, color-coded Powerpole® housings with power, signal and ground contacts accept a broad range of wire gauges, #24 to #10 AWG (0.25 to 4.0 mm²), giving users thousands of flexible design solutions in a single interconnect.



Configurable to 1000 Volts

1 - Chemical & UV Resistant Ruggedized Shells

- Wire to wire configurations
- Panel mount configurations

2 - Touch Safe Housings (UL1977, Section 10.2)

3 - IP68 Interfacial Sealing Gasket

4 - Locking Latch (NEC 2008, Section 690.33C)

5 - Power Contacts (up to 4) and / or Signal Contacts (up to 16)

6 - Uses Industry Standard Sealing Components

(PG gland compatible - size 16)

7 - First Mate / Last Break Ground Contacts

(NEC 2008, Section 690.33D)

8 - Housing Colors to Match Wire Colors for ease of Assembly

9 - Unlocking Tool

Specifications

..... SPEC Pak® Shells Used With

SPEC Pak® Shell	Powerpole® Power Contacts & Housings (1327FP Series)	Powerpole® Ground Contacts & Housings (1827 Series)	PPMX ¹ Signal Contacts & Housings (4800 Series)
Electrical			
Current Rating (Ampere)			
UL 1977	15 to 40	40	7
UL 6703A	20	-	-
CSA (30C Rise)	10 to 26	35	5
<hr/>			
Voltage Rating			
UL 1977 (AC/DC)	600	600	300
UL 6703A (AC)	600	600	-
IEC 60664 (AC/DC)	1,000	-	-
<hr/>			
Dielectric Withstanding (AC/DC)	2,200	2,200	1,600
<hr/>			
Contact Resistance Ω (average)	525	525	-
<hr/>			
Hot Plug ² (UL 1977) 250 Cycles at 120V	30	30	-
<hr/>			
Mechanical			
Environmental Seal			
IP rating	IP68	-	-
UL 50 Sec 36	Pass	-	-
<hr/>			
Wire Size	20 to 10 AWG 0.5 to 4.0 mm ²	14 to 10 AWG 1.5 to 4.0 mm ²	24 to 20 AWG 0.25 to 0.5 mm ²
<hr/>			
Operating Temperature			
UL 1977	-40° to 105°C -40° to 221°F	-20° to 105°C -4° to 221°F	-20° to 105°C -4° to 221°F
UL 6703A	-35° to 65°C -31° to 149°F	-	-
<hr/>			
Mating Cycles (no load)			
Tin	1,500	1,500	-
Silver	10,000	-	-
Gold	-	-	5,000
<hr/>			
Latch			
Mating Cycles	200	-	-
Lock (NEC 2008 Sec 690.33C)	Pass	-	-
<hr/>			
Contact Retention Force (lbf) (N)	25.0 111.0	25.0 111.0	12.0 53.0
<hr/>			
Insertion Force (lbf) (N)	-	3.0 13.3	4.5 max 20.0 max
<hr/>			
Touch Safe (UL 1977 Sec 10.2)	Pass	-	-
<hr/>			
Mechanical Shock (50g) Mil Standard 202 213 Cond A	Pass	-	-
<hr/>			
Vibration (10g) Mil Standard 202 204 Cond A	Pass	-	-
<hr/>			
Materials			
Shell / Housing	PBT / PC	PC	PC
Powerpole® Holder	PC	-	-
Latch	PPE	-	-
<hr/>			
Flammability (UL 94)	V0	V0	V0
<hr/>			
Weatherability (UL 764C)	F1	-	-
<hr/>			
-35°C Impact Test (UL 6703A Sec 30)	Pass	-	-
<hr/>			
Thermal Cycle Test (UL 6703A Sec 35)	Pass	-	-
<hr/>			
Humidity Cycle Test (UL6703A Sec 36)	Pass	-	-
<hr/>			
Contacts			
Base	Copper Alloy	Copper Alloy	Copper Alloy
Plating	Tin or Silver	Tin or Silver	Gold, 50µ

Notes:

1. PPMX housing holds up to 2 pin and 2 sockets.
 2. Hot Plug testing completed using individual Powerpole® housings and contacts, not installed in SPEC Pak® shells.
- For other industry test and/or agency approvals, contact customer service.

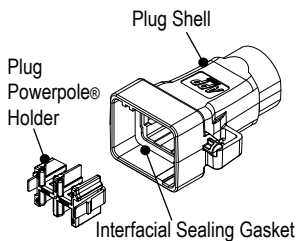


Part Number Configurator

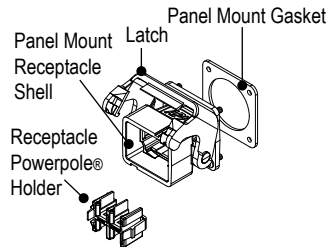
PART NUMBER PLAN

SPEC Pak® Series (1 Fixed Character)	Shell Color (1 Character)	Shell Style (1 Character)	Dash	Shell Size (mm) (3 Characters)	Insert Arrangement (3 Characters)
P	K	2	-	050	B04
P = Solar SPEC Pak®	K = Black	1 = Inline Receptacle 2 = Panel Mount Receptacle 6 = Straight Plug 9 = Panel Mount Receptacle Cover 9R = Inline Receptacle Cover 9P = Plug Cover		050 = 50 mm - 4 Pole Shell	B04 = PP15/45 Housing (any type), 4 Pole

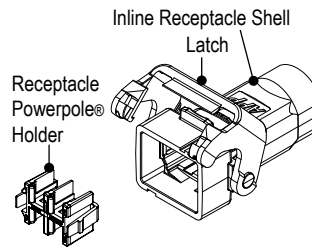
PLUG KIT



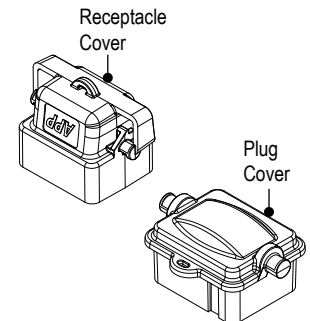
PANEL MOUNT RECEPTACLE KIT



INLINE RECEPTACLE KIT



IP68 SEALING COVER KIT



NOTE:

- Mounting hardware (4 each - M3 or #4 screws) not included
- Recommended torque for mounting hardware is 2½ to 4 in-lbf (0.28 to 0.45 N)

ORDERING INFORMATION

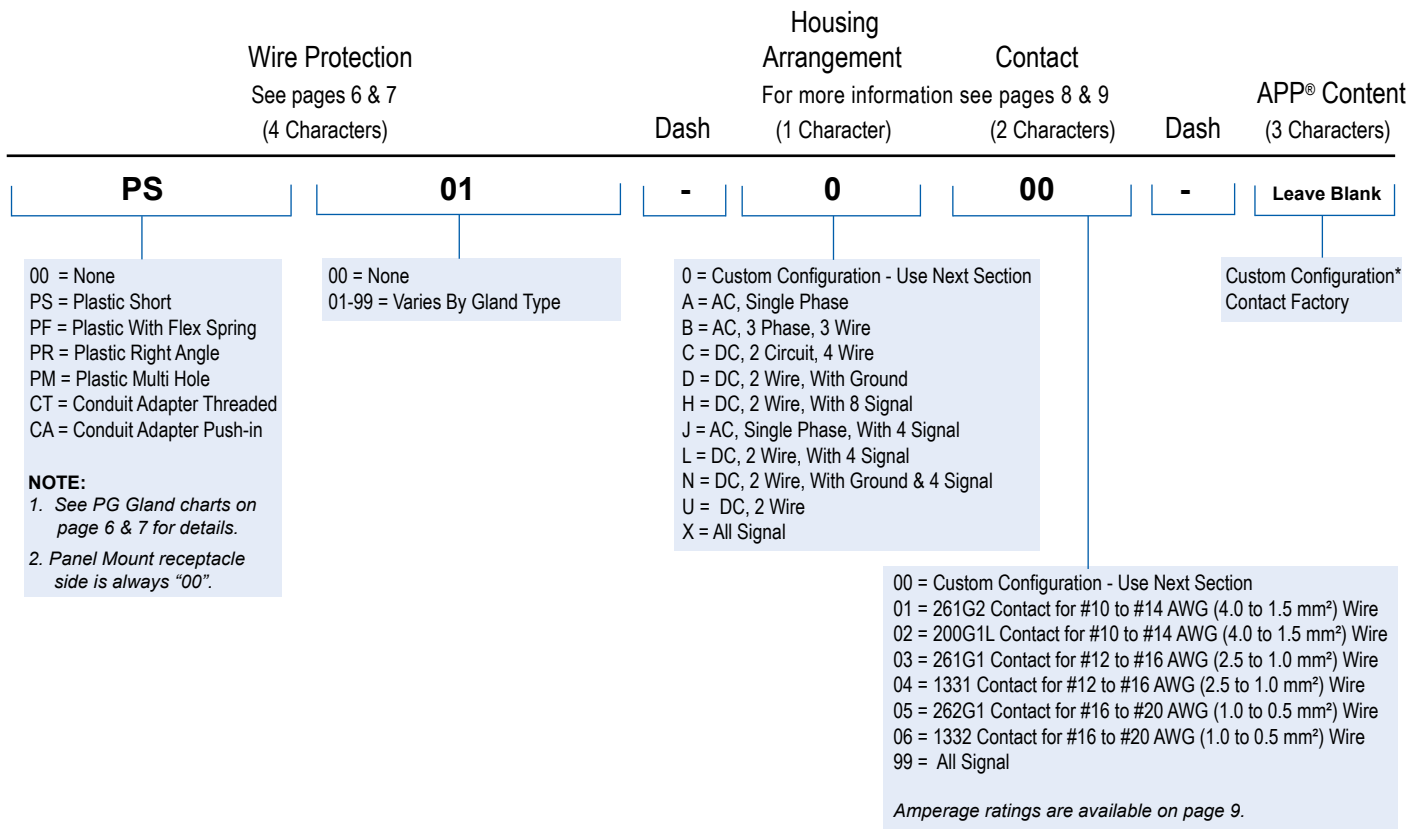
SPEC Pak® Shell Kits

Part Number	Description
PK6-050B04	Plug shell kit - Plug shell (includes interfacial sealing gasket) - Powerpole® holder for plug
PK2-050B04	Panel mount receptacle shell kit - Panel mount receptacle shell with locking latch - Powerpole® holder for receptacle - Panel mount gasket for receptacle
PK1-050B04	Inline receptacle shell kit - Inline receptacle shell with locking latch - Powerpole® holder for receptacle
PK9P-050	Cover kit for plug - Protective sealing (IP68) cover with lanyard - With locking latch
PK9-050	Cover kit for panel mount receptacle - Protective sealing (IP68) cover with lanyard
PK9R-050	Cover kit for inline receptacle - Protective sealing (IP68) cover with lanyard

Component Replacement Parts

Part Number	Description
114805P1	Panel mount gasket for receptacle
2-8709P1	4 position solar locking latch
PKT-050T01	4 position solar unlocking tool (for use with locking latch)

PART NUMBER PLAN



Part Numbering Notes:

1. To order SPEC Pak® Shell Kits Only (no internal Powerpole® housings or contacts), use part numbering on page 4 only. **Plug Shell Kit Example: PK6-050B04.** Powerpole® housings, contacts and wire protection may be ordered separately, see pages 6, 7 and 10 for information.
2. To order SPEC Pak® connectors kits (including internal Powerpole® housings and contacts) use Part Number Plan across the top of pages 4 and 5. **Standard SPEC Pak® Plug Configuration Example: PK6-050B04PS01-B01**
3. To order a custom configuration which is not listed on page 8 and 9, use custom part number configurator on the APP® website, www.andersonpower.com or contact factory.

* Custom configuration may not be UL Recognized.

Wire Protection - PG Gland

SPECIFICATIONS

Gland Styles	Straight Plastic Straight Plastic With Flex Spring Right Angle Straight Plastic Multi-Hole Straight Conduit	Straight Conduit Push-In
Mechanical		
IP Rating	IP68	IP68
Operating Temperature UL 1977	-40° to 105°C -40° to 221°F	-31° to 100°C -22° to 212°F
UL 6703A	-35° to 65°C -31° to 149°F	-
Thread Type	PG	PG
Thread Size	16	16
Flammability (UL 94)	V2 1	-
Weatherability (UL 764C)	F1	-
Material		
Shell	Nylon PA 66	Nylon PA 66
Gasket	EPDM	TPE
Color	Black	Black

Torque Requirement

Cable Gland Body to Connector Shell
• Hand tighten until snug, tighten additional 1/8 to 1/4 turn with wrench

Sealing Nut to Cable

• Hand tighten until snug, tighten additional 1/2 to 3/4 turn with wrench

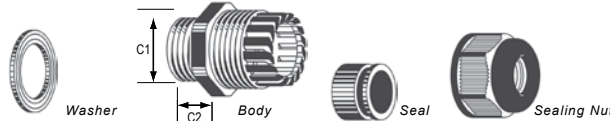
Notes:

1. For V0 material, contact the factory.

SPEC Pak® connectors are not UL recognized components when used with cable glands that are not UL listed.

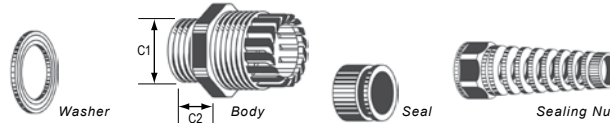


STRAIGHT PLASTIC SHORT THREAD TYPE - STD PACK 50 / UL LISTED



APP® P/N	Wire Protection Designation (4 Characters)	Cable Range Wire Outer Dia. mm (in)	Thread O. D. mm (in)	Panel Mounting Hole mm (in)	Thread Length mm (in)	Wrench Size Lock Nut (mm)	Wrench Size Sealing Nut (mm)
PS1P16-10X	PS01	11.2 - 5.5 (0.44 - 0.22)	22.5 (0.89)	22.5 - 22.8 (0.89 - 0.90)	10.0 (0.39)	30	27
PS1P16-14X	PS02	14.1 - 8.0 (0.56 - 0.31)	22.5 (0.89)	22.5 - 22.8 (0.89 - 0.90)	10.0 (0.39)	30	27

STRAIGHT PLASTIC WITH FLEX SPRING - STD PACK 50 / UL LISTED



APP® P/N	Wire Protection Designation (4 Characters)	Cable Range Wire Outer Dia. mm (in)	Thread O.D. mm (in)	Panel Mounting Hole mm (in)	Thread Length mm (in)	Wrench Size Lock Nut (mm)	Wrench Size Sealing Nut (mm)
PF1P16-10X	PF01	11.2 - 5.5 (0.44 - 0.22)	22.5 (0.89)	22.5 - 22.8 (0.89 - 0.90)	11.0 (0.43)	30	27
PF1P16-13X	PF02	13.8 - 8.0 (0.54 - 0.31)	22.5 (0.89)	22.5 - 22.8 (0.89 - 0.90)	11.0 (0.43)	30	27

RIGHT ANGLE - STD PACK 50 / UL LISTED



APP® P/N	Wire Protection Designation (4 Characters)	Cable Range Wire Outer Dia. mm (in)	Thread O.D. mm (in)	Panel Mounting Hole mm (in)	Thread Length mm (in)	Wrench Size Lock Nut (mm)	Wrench Size Sealing Nut (mm)
PR1P16-10X	PR01	11.0 - 7.0 (0.43 - 0.28)	22.5 (0.89)	22.5 - 22.8 (0.89 - 0.90)	12.0 (0.47)	30	27
PR1P16-13X	PR02	13.0 - 8.0 (0.51 - 0.31)	22.5 (0.89)	22.5 - 22.8 (0.89 - 0.90)	12.0 (0.47)	30	27

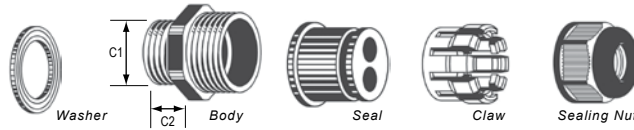
LOCK NUT FOR PG 16 CABLE GLANDS



Lock Nut

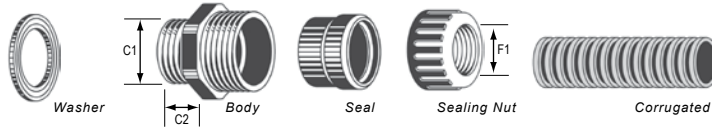
APP® P/N	Wrench Size Lock Nut (mm)	Std. Pkg. Size
124G31	30	50

STRAIGHT PLASTIC MULTI-HOLE TYPE - STD PACK 50 / NOT UL LISTED



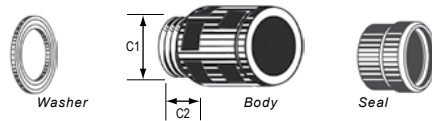
APP® P/N	Wire Protection Designation (4 Characters)	Number of Holes	Cable Range Wire Outer Dia. mm (in)	Thread O.D. C1 mm (in)	Panel Mounting Hole mm (in)	Thread Length C2 mm (in)	Wrench Size Lock Nut (mm)	Wrench Size Sealing Nut (mm)
PS2P16-3X	PM21	2	3.5 - 2.5 (0.14 - 0.10)	22.5 (0.89)	22.5 - 22.8 (0.89 - 0.90)	11.0 (0.43)	30	27
PS2P16-4X	PM22	2	4.3 - 3.3 (0.17 - 0.13)	22.5 (0.89)	22.5 - 22.8 (0.89 - 0.90)	11.0 (0.43)	30	27
PS2P16-6X	PM23	2	6.1 - 4.3 (0.24 - 0.17)	22.5 (0.89)	22.5 - 22.8 (0.89 - 0.90)	11.0 (0.43)	30	27
PS3P16-3X	PM31	3	3.6 - 2.6 (0.14 - 0.10)	22.5 (0.89)	22.5 - 22.8 (0.89 - 0.90)	11.0 (0.43)	30	27
PS3P16-5X	PM32	3	5.2 - 3.5 (0.20 - 0.14)	22.5 (0.89)	22.5 - 22.8 (0.89 - 0.90)	11.0 (0.43)	30	27
PS4P16-2X	PM41	4	2.5 - 1.6 (0.10 - 0.06)	22.5 (0.89)	22.5 - 22.8 (0.89 - 0.90)	11.0 (0.43)	30	27
PS4P16-3X	PM42	4	3.6 - 2.5 (0.14 - 0.10)	22.5 (0.89)	22.5 - 22.8 (0.89 - 0.90)	11.0 (0.43)	30	27
PS4P16-4X	PM43	4	4.8 - 3.4 (0.19 - 0.13)	22.5 (0.89)	22.5 - 22.8 (0.89 - 0.90)	11.0 (0.43)	30	27
PS5P16-2X	PM51	5	2.1 - 1.3 (0.08 - 0.05)	22.5 (0.89)	22.5 - 22.8 (0.89 - 0.90)	11.0 (0.43)	30	27
PS5P16-3X	PM52	5	3.1 - 2.0 (0.12 - 0.08)	22.5 (0.89)	22.5 - 22.8 (0.89 - 0.90)	11.0 (0.43)	30	27
PS5P16-4X	PM53	5	4.1 - 3.0 (0.16 - 0.12)	22.5 (0.89)	22.5 - 22.8 (0.89 - 0.90)	11.0 (0.43)	30	27
PS6P16-2X	PM61	6	2.0 - 1.3 (0.08 - 0.05)	22.5 (0.89)	22.5 - 22.8 (0.89 - 0.90)	11.0 (0.43)	30	27
PS6P16-3X	PM62	6	3.0 - 2.0 (0.12 - 0.08)	22.5 (0.89)	22.5 - 22.8 (0.89 - 0.90)	11.0 (0.43)	30	27

STRAIGHT CONDUIT ADAPTER THREAD TYPE - STD PACK 50 / NOT UL LISTED



APP® P/N	Wire Protection Designation (4 Characters)	Max. Joint F1 mm (in)	Thread O.D. C1 mm (in)	Panel Mounting Hole mm (in)	Thread Length C2 mm (in)	Wrench Size Lock Nut (mm)	APP® Conduit P/N	Conduit Trade Size
CT1P16-15X	CT01	16.0 (0.63)	22.5 (0.89)	22.5 - 22.8 (0.89 - 0.90)	11.0 (0.43)	30	NGN - 12B	OD15.8
CT1P16-18X	CT02	18.3 (0.72)	22.5 (0.89)	22.5 - 22.8 (0.89 - 0.90)	11.0 (0.43)	30	NGN - 14B	-
CT1P16-21X	CT03	22.0 (0.87)	22.5 (0.89)	22.5 - 22.8 (0.89 - 0.90)	11.0 (0.43)	30	NGN - 17B	OD21.2

STRAIGHT CONDUIT PUSH-IN TYPE - STD PACK 50 / NOT UL LISTED



APP® P/N	Wire Protection Designation (4 Characters)	Thread O.D. C1 mm (in)	Panel Mounting Hole mm (in)	Thread Length C2 mm (in)	Wrench Size Lock Nut (mm)	Wrench Size Sealing Nut (mm)	APP® Conduit P/N	Conduit Trade Size
CAP16-15X	CA01	22.5 (0.89)	22.5 - 22.8 (0.89 - 0.90)	10.0 (0.39)	30	21	NGN - 12B	OD15.8
CAP16-18X	CA02	22.5 (0.89)	22.5 - 22.8 (0.89 - 0.90)	10.0 (0.39)	30	21	-	OD18.5
CAP16-21X	CA03	22.5 (0.89)	22.5 - 22.8 (0.89 - 0.90)	10.0 (0.39)	30	27	NGN - 17B	OD21.2
CAP16-28X	CA04	22.5 (0.89)	22.5 - 22.8 (0.89 - 0.90)	12.0 (0.47)	30	34	NGN - 23B	OD28.5

For R/A versions contact Factory

CORRUGATED NYLON PLASTIC TUBING

APP® P/N	Conduit I. D. mm (in)	Conduit O. D. mm (in)	Conduit Size	Trade Size (mm)	Std. Pkg. Meters (Feet)
NGN - 12B	11.8 (0.46)	15.8 (0.62)	3/8"	OD15.8	50 (164)
NGN - 14B	13.8 (0.54)	17.8 (0.70)	-	-	50 (164)
NGN - 17B	16.7 (0.66)	21.2 (0.83)	1/2"	OD21.2	50 (164)
NGN - 23B	21.7 (0.85)	28.5 (1.12)	3/4"	OD28.5	50 (164)

TUBING CUTTER



APP® P/N	Description	Range (mm)
TM0002	Corrugated Plastic Tubing Cutter	Up to OD 34.5

Standard Housing Arrangements & Contacts

HOUSING ARRANGEMENTS FOR POWER, SIGNAL & GROUND CONNECTORS ARRANGEMENTS REPRESENT FRONT VIEW OF RECEPTACLE

Custom configuration may be created using APP's part number configurator at www.andersonpower.com

E = Empty

1327 Series = Power

1827 Series = Ground

4800 Series = Signal

0 Custom Configuration

AC Single Phase

A	1327G6FP	E
	1327G7FP	1827GA

AC 3 Phase, 3 Wire

B	1327G6FP	1327FP
	1327G7FP	1827GA

DC 2 Circuit, 4 Wire

C	1327G6FP	1327G6FP
	1327FP	1327FP

DC 2 Wire With Ground

D	1327G6FP	E
	1327FP	1827GA

DC 2 Wire With 8 Signal

H	4827G6	4827G6
	1327G6FP	1327FP

AC Single Phase With 4 Signal

J	1327G6FP	4827G6
	1327G7FP	1827GA

DC 2 Wire With 4 Signal

L	1327G6FP	1327FP
	E	4827G6

DC 2 Wire With Ground & 4 Signal

N	1327G6FP	1327FP
	4827G6	1827GA

DC 2 Wire

U	1327G6FP	E
	E	1327FP

All Signal

X	4827G6	4827G6
	4827G6	4827G6

Notes:

600 Volt Rating

- UL 1977 - All Configurations
- UL 6703A - Configuration B
- IEC 60664 - All Configurations

1000 Volt Rating

- IEC 60664 - Configuration U

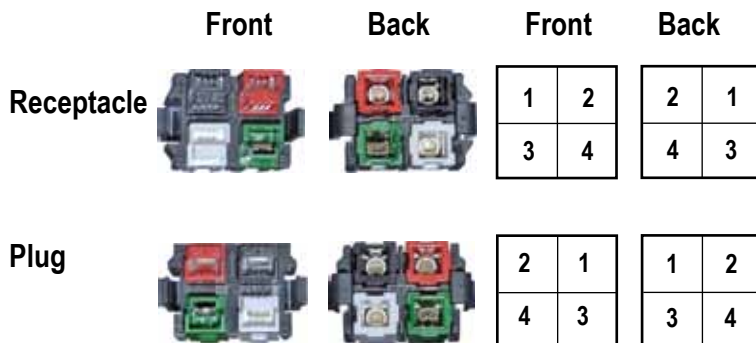
CONTINUOUS CURRENT RATINGS - POWER CONTACT CODE SELECTION

Contact Code	Power Contact	Housing Configuration	Wire Size / Current Rating					
			#10	#12	#14	#16	#18	#20
00	Contacts Purchased Separately							
01	261G2	A - D	25/38	20/30	15/25	-	-	-
		H,J,L,N	26/40	25/35	17/27	-	-	-
02	200G1L	A - D	23/35	18/28	15/23	-	-	-
		H,J,L,N	24/37	23/32	15/25	-	-	-
03	261G1	A - D	-	20/30	15/25	11/16	-	-
		H,J,L,N	-	25/35	17/27	13/20	-	-
04	1331	A - D	-	16/25	15/23	12/18	-	-
		H,J,L,N	-	17/27	17/25	13/20	-	-
05	262G1	A - D	-	-	-	11/16	8/13	6/9
		H,J,L,N	-	-	-	13/20	10/15	7/10
06	1332	A - D	-	-	-	12/18	8/13	6/9
		H,J,L,N	-	-	-	13/20	10/15	7/10

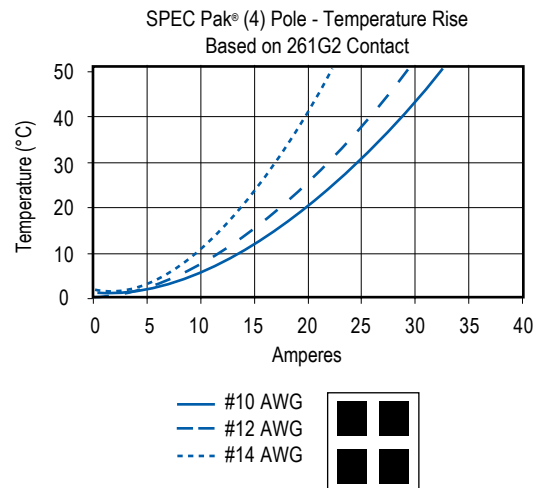
NOTES:

- Current ratings under UL1977:
 - First number represents current rating per pole for 30°C temperature rise (25 / 38)
 - Second number is the maximum recommended current per pole based on a 25°C ambient (25 / 38)
 (Current ratings under UL 6703A, contact the factory)
- Configuration H - N based on signal contacts crimped to #20 AWG wire and carrying 1 amp.
- ☐ Denotes wire size not appropriate for power contact.
- Shaded boxes are US File No. E26226 pending.
- 1827GA housing should be used with 1830G1 or 1830G2 ground contact, depending on primary contacts.
All signal housings (4850) available with up to two 4802G3 and two 4803G3 contacts.

HOLDER LOCATIONS (VIEWS)



TEMPERATURE CHART



Individual components

POWERPOLE® HOUSINGS & CONTACTS

Fingerproof PP15/45 Housing Only

Package Quantity:

Standard, 200 pieces - Bulk, 2,500 pieces

Standard Part Number	Bulk Part Number	Description
1327FP	1327FP-BK	Red Housing
1327G5FP	1327G5FP-BK	Green Housing
1327G6FP	1327G6FP-BK	Black Housing
1327G7FP	1327G7FP-BK	White Housing
1327G8FP	1327G8FP-BK	Blue Housing
1327G16FP	1327G16FP-BK	Yellow Housing

Standard PP 15/45 Housing Only

Package Quantity:

Standard, 200 pieces - Bulk, 2,500 pieces

Standard Part Number	Bulk Part Number	Description
1327	1327-BK	Red Housing
1327G5	1327G5-BK	Green Housing
1327G6	1327G6-BK	Black Housing
1327G7	1327G7-BK	White Housing
1327G8	1327G8-BK	Blue Housing
1327G16	1327G16-BK	Yellow Housing
1327G17	1327G17-BK	Orange Housing
1327G18	1327G18-BK	Gray Housing
1327G21	1327G21-BK	Brown Housing
1327G22	1327G22-BK	Pink Housing
1327G23	1327G23-BK	Purple Housing

Premate Ground PP15/45 Housing Only

Package Quantity:

Standard, 200 pieces - Bulk, 2,500 pieces

Standard Part Number	Bulk Part Number	Description
1827GA	1827GA-BK	Green Housing

Premate Ground Contacts

Loose Piece

Package Quantity 200

Part Number	Description
#10 to #14 AWG (4 to 1.5 mm ²)	
1830G1-LPBK	Singulated-LD-Tin Plate
1830G2-LPBK	Singulated-LD-Silver Plate

Reel

Package Quantity 5,000

Part Number	Description
#10 to #14 AWG (4 to 1.5 mm ²)	
1830G1	Reel-LD-Tin Plate
1830G2	Reel-LD-Silver Plate

15/45 Powerpole® Contacts

Loose Piece

Package Quantity:

Standard, 200 pieces - Bulk, 5,000 pieces

Standard Part Number	Bulk Part Number	Description
#16 to #20 AWG (1.0 to 0.5 mm ²)		
1332	1332-BK	Individual-LD-Silver Plate
262G1-LPBK	-	Singulated Reel-LD-Tin Plate
262G2-LPBK	-	Singulated Reel-LD-Silver Plate
#12 to #16 AWG (2.5 to 1.0 mm ²)		
1331	1331-BK	Individual-LD-Silver Plate
261G1-LPBK	-	Singulated Reel-LD-Tin Plate
#10 to #14 AWG (4 to 1.5 mm ²)		
261G2-LPBK	-	Singulated Reel-LD-Tin Plate
261G3-LPBK	-	Singulated Reel-LD-Silver Plate
200G1L-LPBK	-	Superflex, Sing. Reel-LD-Tin Plate

Reel - 15/45 Powerpole® Contacts

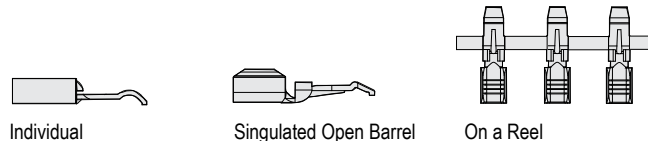
Package Quantity 5,000

Part Number	Description
#16 to #20 AWG (1.0 to 0.5 mm ²)	
262G1	Reel-LD-Tin Plate
262G2	Reel-LD-Silver Plate
#12 to #16 AWG (2.5 to 1.0 mm ²)	
261G1	Reel-LD-Tin Plate
#10 to #14 AWG (4 to 1.5 mm ²)	
261G2	Reel-LD-Tin Plate
261G3	Reel-LD-Silver Plate
#10 to #14 AWG (6 to 1.5mm ²)	
200G1L	SuperFlex, Reel-LD-Tin Plate

NOTE:

LD - Low Detent

CONTACT STYLES



PPMX (4800 SERIES) HOUSING & CONTACTS

PPMX Signal Housing

Package Quantity

Standard, 25 pieces - Bulk, 1,000 pieces

Standard	Bulk	
Part Number	Part Number	Description
4827G6	4827G6-BK	Black two piece housing

PPMX Signal Contacts

Package Quantity

Standard, 50 pieces - Bulk, 2,000 pieces

Loose Piece

#20 to #24 AWG (0.50 to 0.25 mm²)

Standard	Bulk	
Part Number	Part Number	Description
4802G3	4802G3-BK	Socket, Gold, 50 Micro-inches
4803G3	4803G3-BK	Pin, Gold, 50 Micro-inches

PPMX Signal Housing & Contact Kits

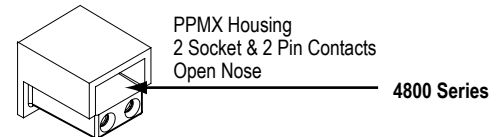
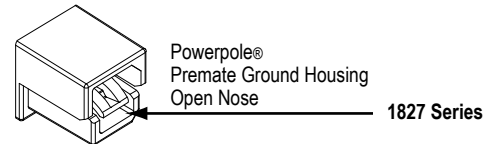
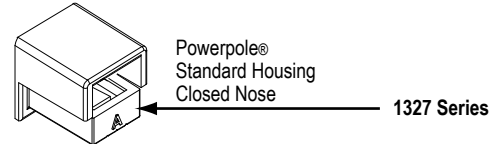
Package Quantity

Standard, 100 pieces

1 Black two piece housing, 2 Male Contacts,
2 Female Contacts

Standard	Bulk	
Part Number	Part Number	Description
4850G6	-	50 Micro-inches Gold Plated Contacts - Pin & Socket

PP15/45 POWERPOLE® HOUSING STYLES



APPLICATION TOOLING - POWERPOLE® 15 / 45 CONTACTS

Loose Piece Tin Part Number	Loose Piece Silver Part Number	Hand Tool* or Pneumatic Tool*	Reeled Tin Part Number	Reeled Silver Part Number	ATS Applicator
N/A	1332	1309G2 or 1309G8**	N/A	N/A	N/A
N/A	1331		N/A	N/A	N/A
262G1-LPBK	262G2-LPBK	N/A	261G1	262G2	1385520
200G2L-LPBK	200G4L-LPBK		200G2L	200G4L	TBD
261G1-LPBK	261G4-LPBK		261G1	261G4	1385520
261G2-LPBK	261G3-LPBK		261G2	261G3	1385458
200G1L-LPBK	200G3L-LPBK		200G1L	200G3L	1385460
1830G1-LPBK	1830G2-LPBK		1830G1	1830G2	1385460

* All Hand and Pneumatic Tools for use with Loose Piece contacts only. All reeled contacts can be ordered singulated, (Loose Piece) with the suffix "- LPBK"

** 1309G8 is a hand tool kit- includes dies and locators to make up 1309G2, 1309G3, & 1309G6

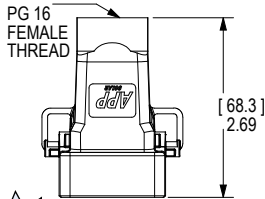
APPLICATION TOOLING - PPMX CONTACTS

Contact Part Number	APP® Hand Tool or	Mil Std. Hand Tool (APP Part #)	Positioner	Pneumatic Tool for Locator / Turret
4802G3	PM1000G1	M22520/1-01 (TM0001)	No Mil Std. (TL0005)	TP0001
4803G3				

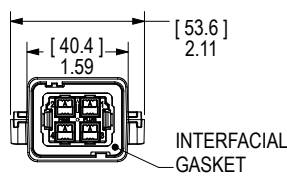
Dimensions

PLUG 4 POSITION FOR PP15/45 HOUSINGS

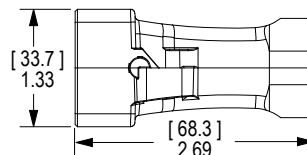
Top View



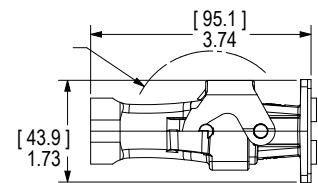
Front View



Side View

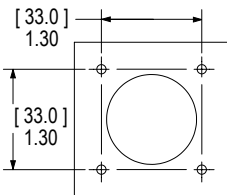


Mated Side View

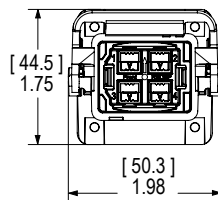


PANEL MOUNT RECEPTACLE 4 POSITION FOR PP15/45 HOUSINGS

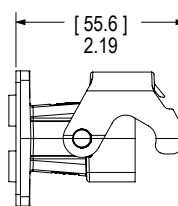
Panel Cut Out



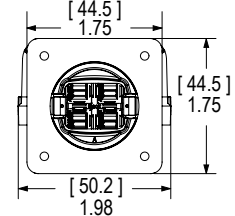
Front View



Side View

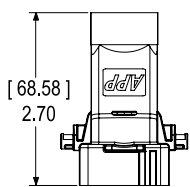


Back View

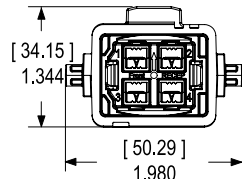


INLINE RECEPTACLE 4 POSITION FOR PP15/45 HOUSINGS

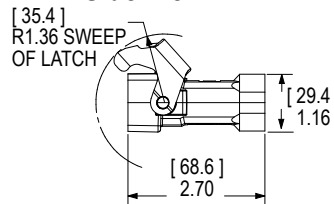
Top View



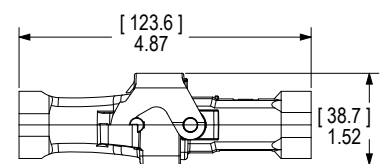
Front View



Side View

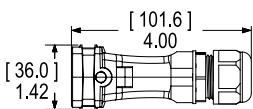


Mated Side View

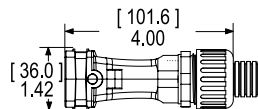


PG GLANDS

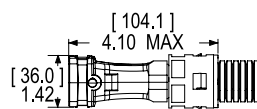
PS - Plastic Short



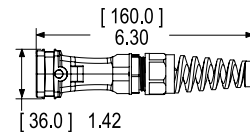
CT - Threaded Conduit Adapter



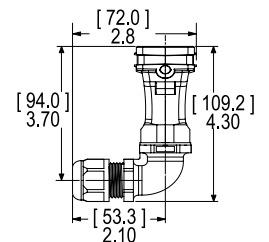
CA - Push-in Conduit Adapter



PF - Plastic Flex PG

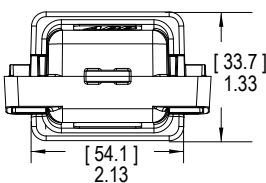


PR - Right Angle

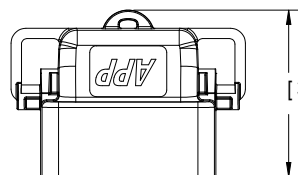


RECEPTACLE COVER KIT

Front View

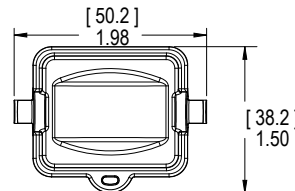


Side View

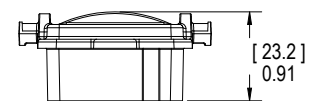


PLUG COVER KIT

Front View



Side View



All Data Subject To Change Without Notice Patents with Patents Pending

15145_DS-SOLARSPAK_REV 02

HEADQUARTERS: Anderson Power Products®, 13 Pratts Junction Road, Sterling, MA 01564-2305 USA T:978-422-3600 F:978-422-0128

EUROPE: Anderson Power Products® Ltd., Unit 3, Europa Court, Europa Boulevard, Westbrook, Warrington, Cheshire, WA5 7TN United Kingdom T: +44 (0) 1925 428390 F: +44 (0) 1925 520203

ASIA / PACIFIC: IDEAL Anderson Asia Pacific Ltd., Unit 922-928 Topsail Plaza, 11 On Sum Street, Shatin N.T., Hong Kong T: +(852) 2636 0836 F: +(852) 2635 9036

CHINA: IDEAL Anderson Technologies (Shenzhen) Ltd., Block A8 Tantou Western Industrial Park, Songgang Baoan District, Shenzhen, P.R. China 518105 T: +(86) 755 2768 2118 F: +(86) 755 2768 2218

TAIWAN: IDEAL Anderson Asia Pacific Ltd., Taiwan Branch, 4F-2, No.116, Dadun 20th St., Situn District, Taichung City 407, Taiwan (R.O.C.) T: +(886) 4 2310 6451 F: +(886) 4 2310 6460

www.andersonpower.com



Компания «ЭлектроПласт» предлагает заключение долгосрочных отношений при поставках импортных электронных компонентов на взаимовыгодных условиях!

Наши преимущества:

- Оперативные поставки широкого спектра электронных компонентов отечественного и импортного производства напрямую от производителей и с крупнейших мировых складов;
- Поставка более 17-ти миллионов наименований электронных компонентов;
- Поставка сложных, дефицитных, либо снятых с производства позиций;
- Оперативные сроки поставки под заказ (от 5 рабочих дней);
- Экспресс доставка в любую точку России;
- Техническая поддержка проекта, помощь в подборе аналогов, поставка прототипов;
- Система менеджмента качества сертифицирована по Международному стандарту ISO 9001;
- Лицензия ФСБ на осуществление работ с использованием сведений, составляющих государственную тайну;
- Поставка специализированных компонентов (Xilinx, Altera, Analog Devices, Intersil, Interpoint, Microsemi, Aeroflex, Peregrine, Syfer, Eurofarad, Texas Instrument, Miteq, Cobham, E2V, MA-COM, Hittite, Mini-Circuits, General Dynamics и др.);

Помимо этого, одним из направлений компании «ЭлектроПласт» является направление «Источники питания». Мы предлагаем Вам помощь Конструкторского отдела:

- Подбор оптимального решения, техническое обоснование при выборе компонента;
- Подбор аналогов;
- Консультации по применению компонента;
- Поставка образцов и прототипов;
- Техническая поддержка проекта;
- Защита от снятия компонента с производства.



Как с нами связаться

Телефон: 8 (812) 309 58 32 (многоканальный)

Факс: 8 (812) 320-02-42

Электронная почта: org@eplast1.ru

Адрес: 198099, г. Санкт-Петербург, ул. Калинина, дом 2, корпус 4, литера А.