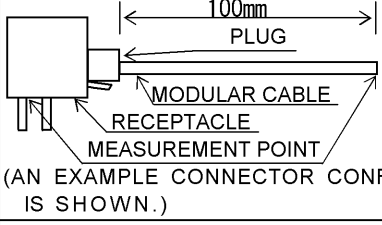
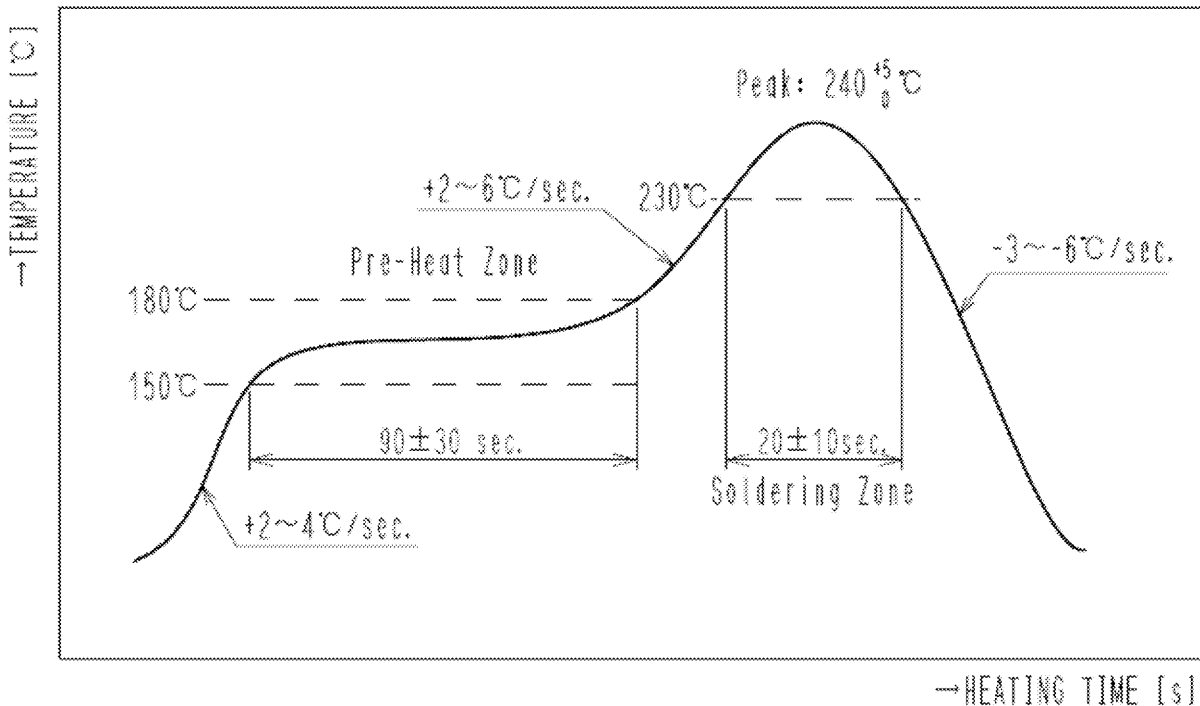


APPLICABLE STANDARD					
RATING	OPERATING TEMPERATURE RANGE	-25 °C TO +80 °C	STORAGE TEMPERATURE RANGE	-25 °C TO +60 °C	
	VOLTAGE	125 V AC	OPERATING HUMIDITY RANGE	95 % MAX.	
	CURRENT	500mA	APPLICABLE CABLE	—	
SPECIFICATIONS					
ITEM	TEST METHOD		REQUIREMENTS	QT	AT
CONSTRUCTION					
GENERAL EXAMINATION	VISUALLY AND BY MEASURING INSTRUMENT.		ACCORDING TO DRAWING.	X	X
MARKING	CONFIRMED VISUALLY.			X	X
ELECTRIC CHARACTERISTICS					
CONTACT RESISTANCE	100 mA MAX (DC OR 1000 Hz AC).	60 mΩ MAX.		X	X
					
INSULATION RESISTANCE	100 V DC.	100 MΩ MIN.		X	X
VOLTAGE PROOF (CONTACT TO CONTACT)	500 V AC FOR 1 min.	NO FLASHOVER OR BREAKDOWN.		X	X
MECHANICAL CHARACTERISTICS					
MECHANICAL OPERATION	5000 TIMES INSERTIONS AND EXTRACTIONS.	1) CONTACT RESISTANCE: 90 mΩ MAX. 2) NO DAMAGE, CRACK AND LOOSENESS OF PARTS.		X	—
VIBRATION	FREQUENCY 10 TO 55 Hz SINGLE AMPLITUDE 0.75 mm, AT 2 HOURS FOR 3 DIRECTIONS.	1) NO ELECTRICAL DISCONTINUITY OF 5 μs. 2) CONTACT RESISTANCE: 90 mΩ MAX. 3) NO DAMAGE, CRACK AND LOOSENESS OF PARTS.		X	—
SHOCK	490 m/s ² DIRECTIONS OF PULSE 11 ms AT 3 TIMES FOR 3 DIRECTIONS.			X	—
ENVIRONMENTAL CHARACTERISTICS					
DAMP HEAT, CYCLIC	EXPOSED AT +40 °C, 90 TO 95 % , 500 h	1) CONTACT RESISTANCE: 90 mΩ MAX. 2) INSULATION RESISTANCE: 1 MΩ MIN. (AT HIGH HUMIDITY) 10 MΩ MIN. (AT DRY) 3) NO DAMAGE, CRACK AND LOOSENESS OF PARTS.		X	—
RAPID CHANGE OF TEMPERATURE	TEMPERATURE -55±3 → 5 TO 35 → 85±2 → 5 TO 35 °C TIME 30 +5/0 → 5 MAX. → 30 +5/0 → 5 MAX. min UNDER 5 CYCLES.	1) CONTACT RESISTANCE: 90 mΩ MAX. 2) INSULATION RESISTANCE: 100 MΩ MIN. 3) NO DAMAGE, CRACK AND LOOSENESS OF PART		X	—
CORROSION SALT MIST	EXPOSED IN 5 % SALT WATER SPRAY FOR 48 h.	1) CONTACT RESISTANCE: 90 mΩ MAX. 2) NO HEAVY CORROSION.		X	—
REVISIONS					
	COUNT	DESCRIPTION OF REVISIONS	DESIGNED	CHECKED	DATE
△					
REMARK			APPROVED	KN. ICHIKAWA	11. 01. 13
			CHECKED	KN. ICHIKAWA	11. 01. 13
			DESIGNED	HN. ANDO	11. 01. 11
Unless otherwise specified, refer to JIS C 5402.			DRAWN	HN. ANDO	11. 01. 11
Note QT:Qualification Test AT:Assurance Test X:Applicable Test			DRAWING NO.		ELC4-127281-00
HRS	SPECIFICATION SHEET		PART NO.	TM25RS-5CNA-88	
	HIROSE ELECTRIC CO., LTD.		CODE NO.	CL222-2967-7-00	△ 1/2

SPECIFICATIONS


ITEM	TEST METHOD	REQUIREMENTS	QT	AT
------	-------------	--------------	----	----

RECOMMENDED TEMPERATURE PROFILE (REFLOW SOLDERING, MOUNTING AREA)

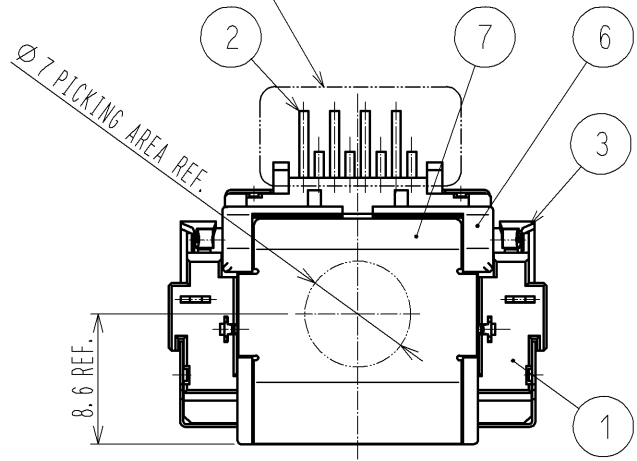
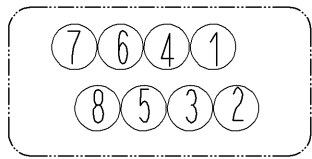


RECOMMENDED MANUAL SOLDERING TEMPERATURE

- TEMPERATURE : 350±10°C
- HEATING TIME : 4sec. MAX.

Note QT:Qualification Test AT:Assurance Test X:Applicable Test		DRAWING NO.	ELC4-127281-00		
HRS	SPECIFICATION SHEET		PART NO.	TM25RS-5CNA-88	
	HIROSE ELECTRIC CO., LTD.		CODE NO	CL222-2967-7-00	 2/2

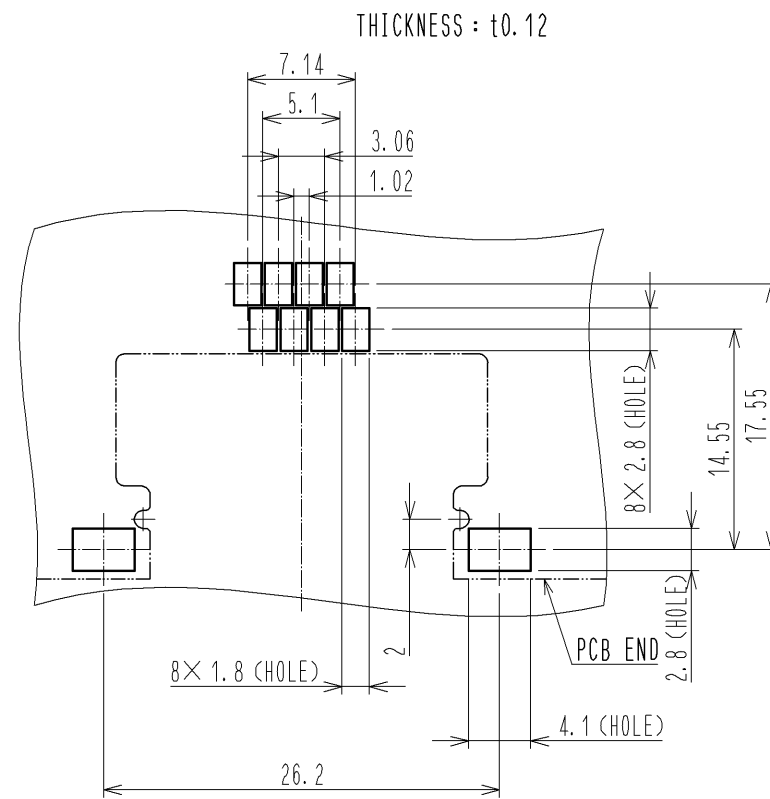
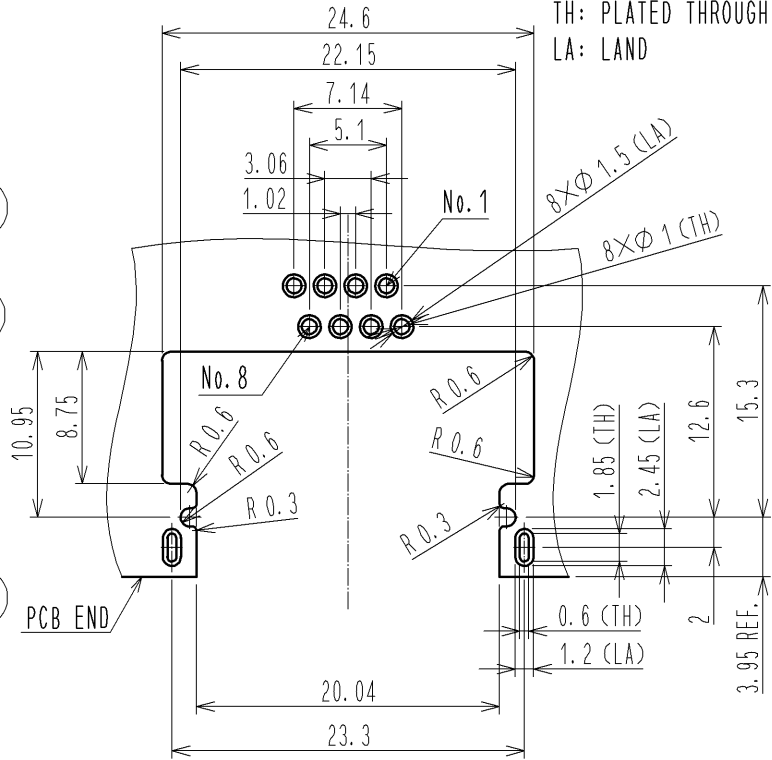
2 MOUNTING AREA PIN ASSIGNMENT



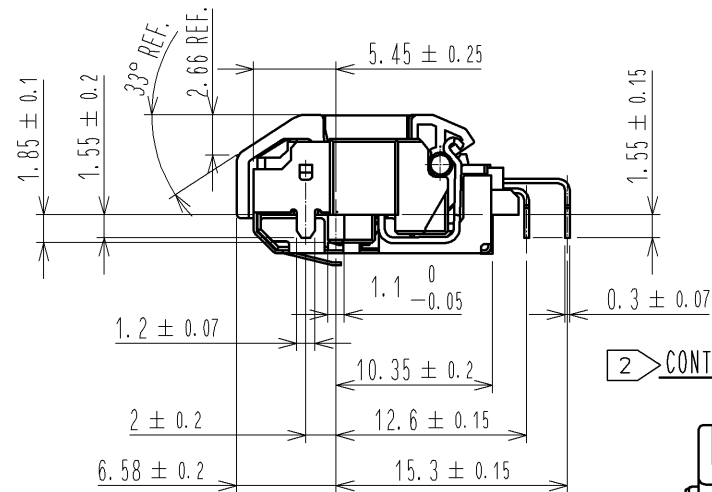
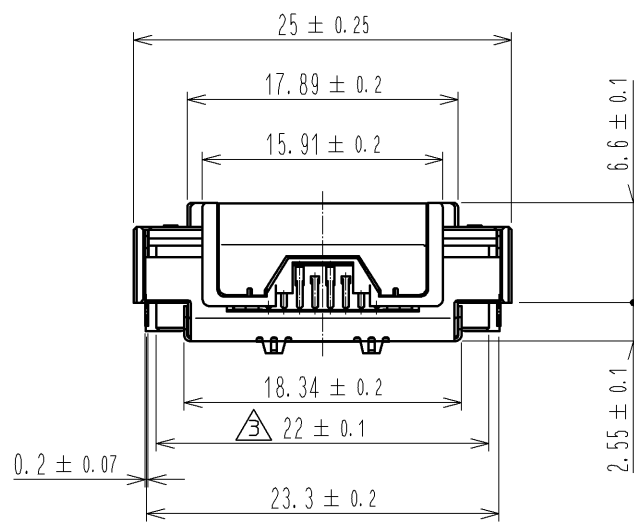
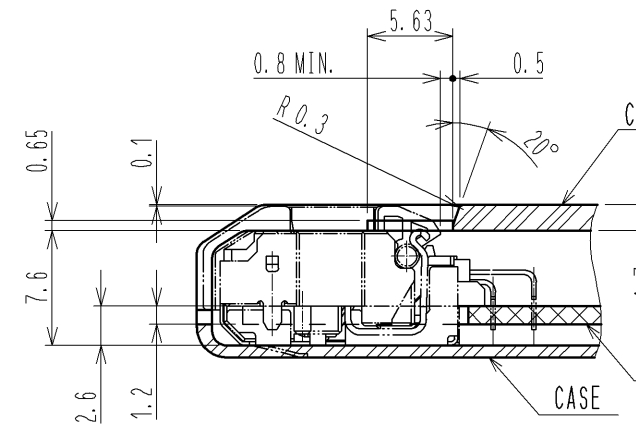
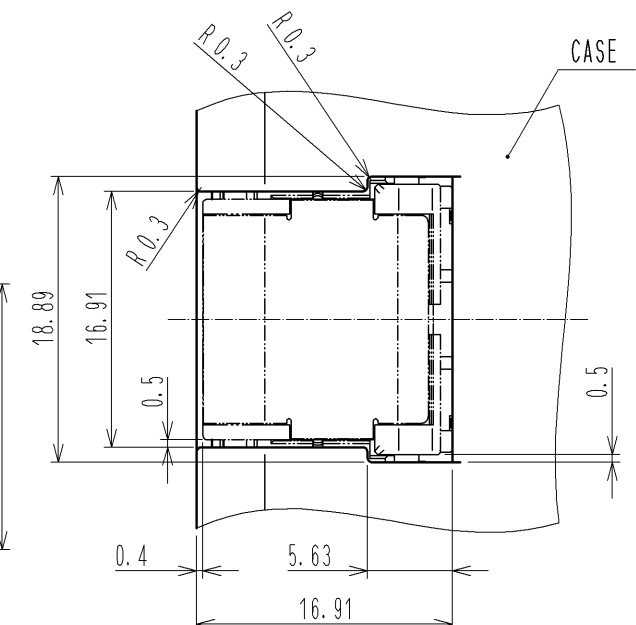
RECOMMENDED PC BORAD PATTERN

PCB THICKNESS: t1.2
TH: PLATED THROUGH HOLE
LA: LAND

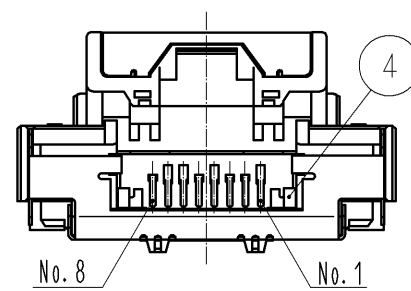
METAL MASK DIMENSIONS FOR REFERENCE
THICKNESS: t0.12



INSTALLATION DIMENSIONS FOR REFERENCE



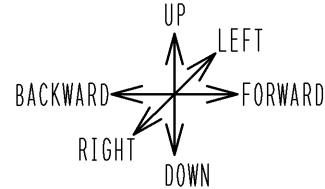
2 CONTACT AREA PIN ASSIGNMENT



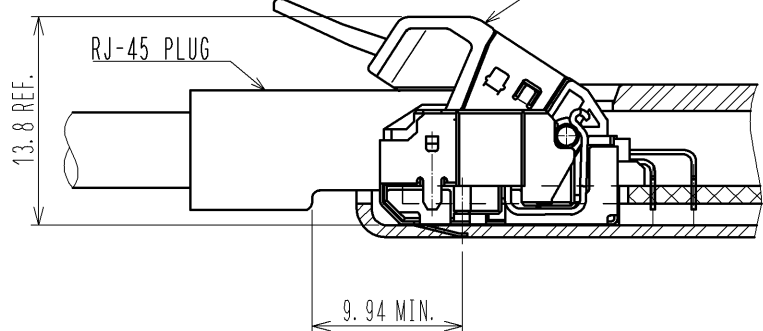
NOTES

- 1 WRENCHING STRENGTH IN EACH DIRECTION IS STATED AS FOLLOWS.
BACKWARD AND FORWARD : 60N MIN.
RIGHT AND LEFT : 30MIN.
UP AND DOWN : 15N MIN. MOVING PART SHALL NOT BE COME OFF.
AFTER IT IS EXAMINATED 20 TIMES : 10N MIN.
- 2 PIN ASSIGNMENT IS AS SHOWN IN FIGURE.
PLEASE NOTE THE PIN ASSIGNMENT IS FOR MOUNTING AREA AND DIFFERENT FROM THAT FOR CONTACT AREA.

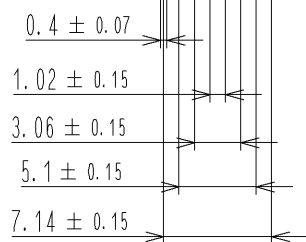
1 WRENCHING DIRECTION



REVISD CONFIGURATION



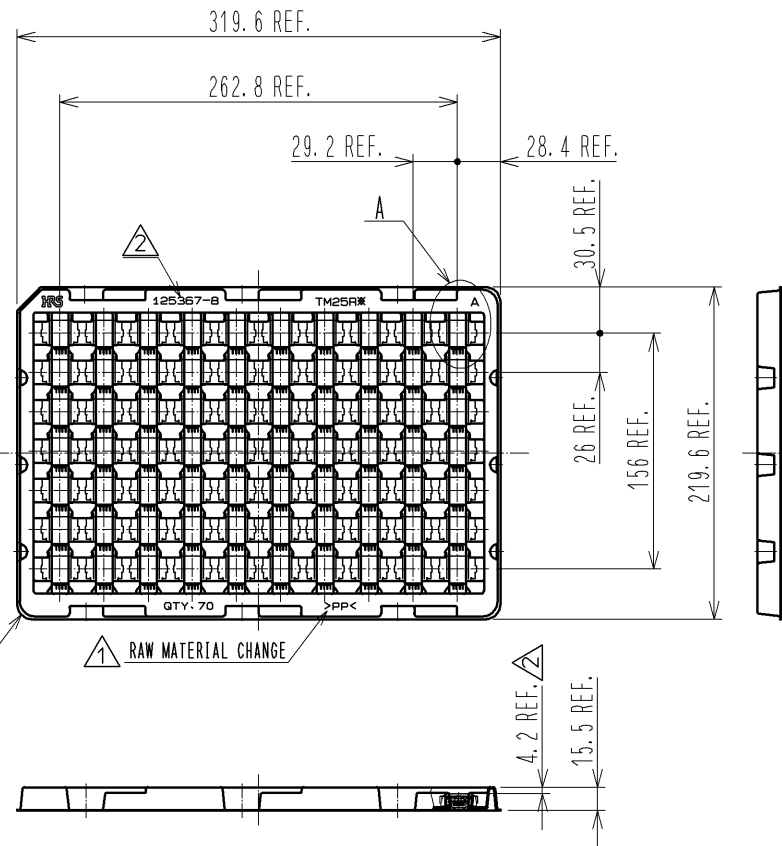
LOT No.



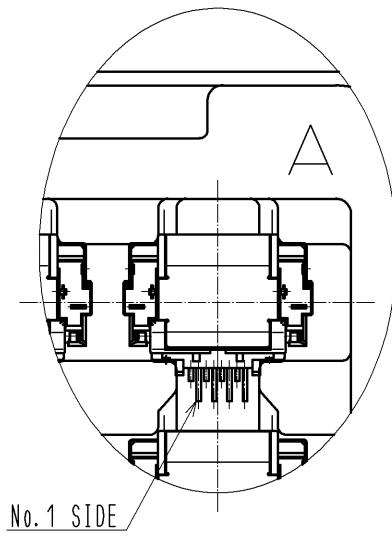
4	STAINLESS STEEL		8	PP	CLEAR, TRAY
3	STAINLESS STEEL		7	STAINLESS STEEL	NICKEL PLATING : 0.1μm MIN.
2	PHOSPHOR BRONZE	CONTACT AREA : GOLD PLATING 0.2μm MIN. MOUNTING AREA : GOLD PLATING 0.03μm MIN. UNDER PLATING : NICKEL PLATING 1μm MIN.	6	POLYAMIDE	BLACK, UL94V-0
1	POLYAMIDE	BLACK, UL94V-0	5	STAINLESS STEEL	BOTH SIDE TIN PLATING 38μm MIN. UNDER PLATING NICKEL PLATING 125μm MIN.
NO.	MATERIAL	FINISH, REMARKS	NO.	MATERIAL	FINISH, REMARKS
UNITS mm		SCALE 2 : 1	COUNT 1	DESCRIPTION OF REVISIONS DIS-E-004428	
DESIGNED HN. ANDO		DESIGNED KN. ICHIKAWA 11.01.13	DESIGNED KN. ICHIKAWA 11.01.13	DESIGNED HN. ANDO 11.01.13	DESIGNED HN. ANDO 11.01.13
CHECKED AH. KODAMA		CHECKED KN. ICHIKAWA 11.01.13	CHECKED KN. ICHIKAWA 11.01.13	CHECKED HN. ANDO 11.01.13	CHECKED HN. ANDO 11.01.13
DATE 12.11.14		DATE 11.01.13	DATE 11.01.13	DATE 11.01.13	DATE 11.01.13
DRAWING NO. EDC3-127281-00			PART NO. TM25RS-5CNA-88		
CODE NO. CL222-2967-7-00			CODE NO. CL222-2967-7-00		

③ PACKING OF TRAY (FREE)

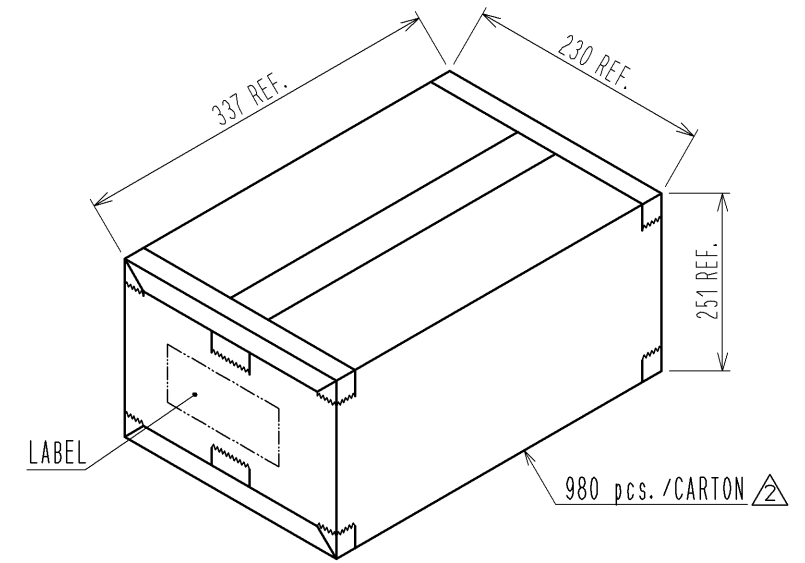
A TYPE 70 pcs./TRAY



A (1:1)



④ PACKING OF CARTON (FREE)



⑤ ④ ACCUMULATION OF TRAY (FREE)

CORRUGATED CARDBOARD

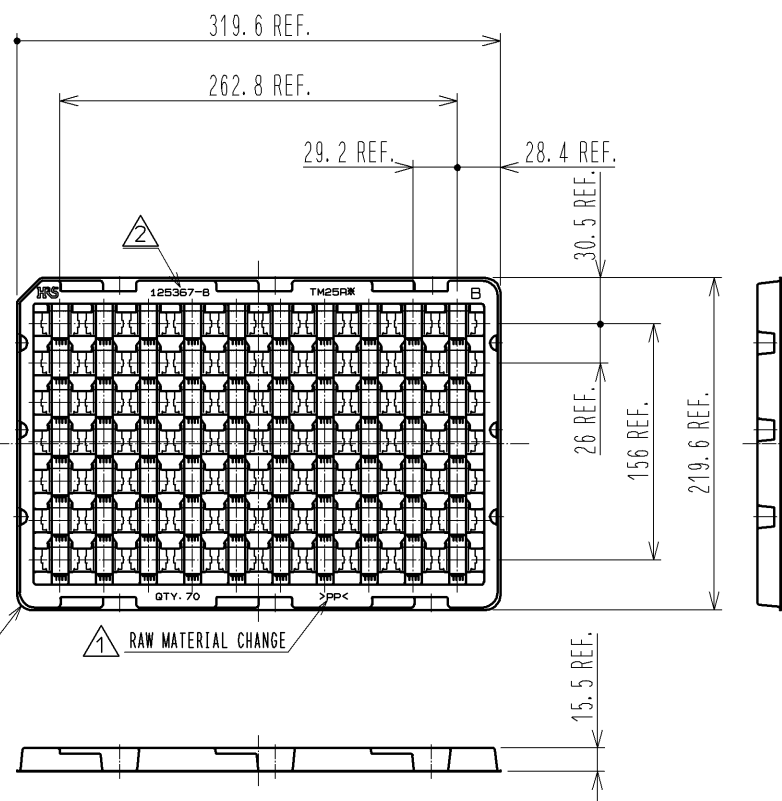
PP BAND

CORRUGATED CARDBOARD

EMPTY TRAY : 1 pcs.

TRAY : 7 pcs.

B TYPE 70 pcs./TRAY



CONTENTS OF A LABEL

荷 札			
得意先名 (Customer Name)		納入場所 (Shipment to)	
注文番号 (P/O No.)	得意先品名 (Customer Part Name)		自販
受注製番	1箱の入り数 (This box contains)	個 (Qty)	個 (Pcs)
搬出登録 (Delivery Register No.)	得意先数量		個 (Pcs)
品目コード	仕様	HRS品名 (Hirose Part Number)	
仕様名			工事番号
特記事項			
二枚分岐	営業コード	MADE IN JAPAN	
ヒロセ電機株式会社 Hirose Electric Co., Ltd.			

NOTES ③ PACKING : 70 pcs./TRAY

④ THE PACKING SPECIFICATION CAN VARY WITH PACKING QUANTITIES.

⑤ 2 SETS OF BANNED TRAYS ARE USED IN CARTON BOX WHEN PRODUCTS ARE STORED MAXIMUM.

HRS	DRAWING NO.	EDC3-127281-00
	PART NO.	TM25RS-5CNA-88
	CODE NO.	CL222-2967-7-00



Компания «ЭлектроПласт» предлагает заключение долгосрочных отношений при поставках импортных электронных компонентов на взаимовыгодных условиях!

Наши преимущества:

- Оперативные поставки широкого спектра электронных компонентов отечественного и импортного производства напрямую от производителей и с крупнейших мировых складов;
- Поставка более 17-ти миллионов наименований электронных компонентов;
- Поставка сложных, дефицитных, либо снятых с производства позиций;
- Оперативные сроки поставки под заказ (от 5 рабочих дней);
- Экспресс доставка в любую точку России;
- Техническая поддержка проекта, помощь в подборе аналогов, поставка прототипов;
- Система менеджмента качества сертифицирована по Международному стандарту ISO 9001;
- Лицензия ФСБ на осуществление работ с использованием сведений, составляющих государственную тайну;
- Поставка специализированных компонентов (Xilinx, Altera, Analog Devices, Intersil, Interpoint, Microsemi, Aeroflex, Peregrine, Syfer, Eurofarad, Texas Instrument, Miteq, Cobham, E2V, MA-COM, Hittite, Mini-Circuits, General Dynamics и др.);

Помимо этого, одним из направлений компании «ЭлектроПласт» является направление «Источники питания». Мы предлагаем Вам помощь Конструкторского отдела:

- Подбор оптимального решения, техническое обоснование при выборе компонента;
- Подбор аналогов;
- Консультации по применению компонента;
- Поставка образцов и прототипов;
- Техническая поддержка проекта;
- Защита от снятия компонента с производства.



Как с нами связаться

Телефон: 8 (812) 309 58 32 (многоканальный)

Факс: 8 (812) 320-02-42

Электронная почта: org@eplast1.ru

Адрес: 198099, г. Санкт-Петербург, ул. Калинина, дом 2, корпус 4, литера А.