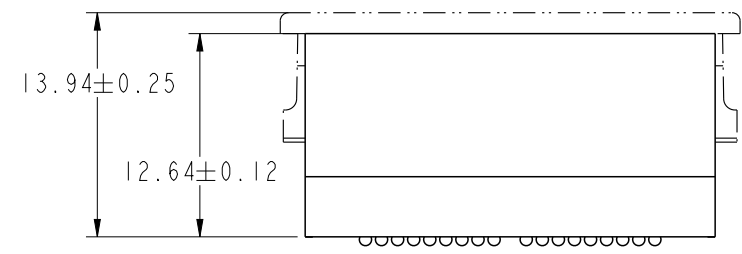
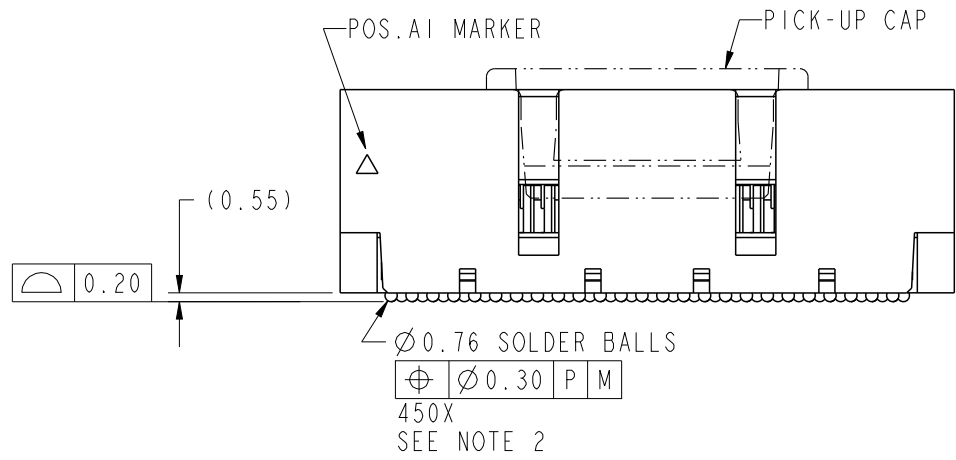
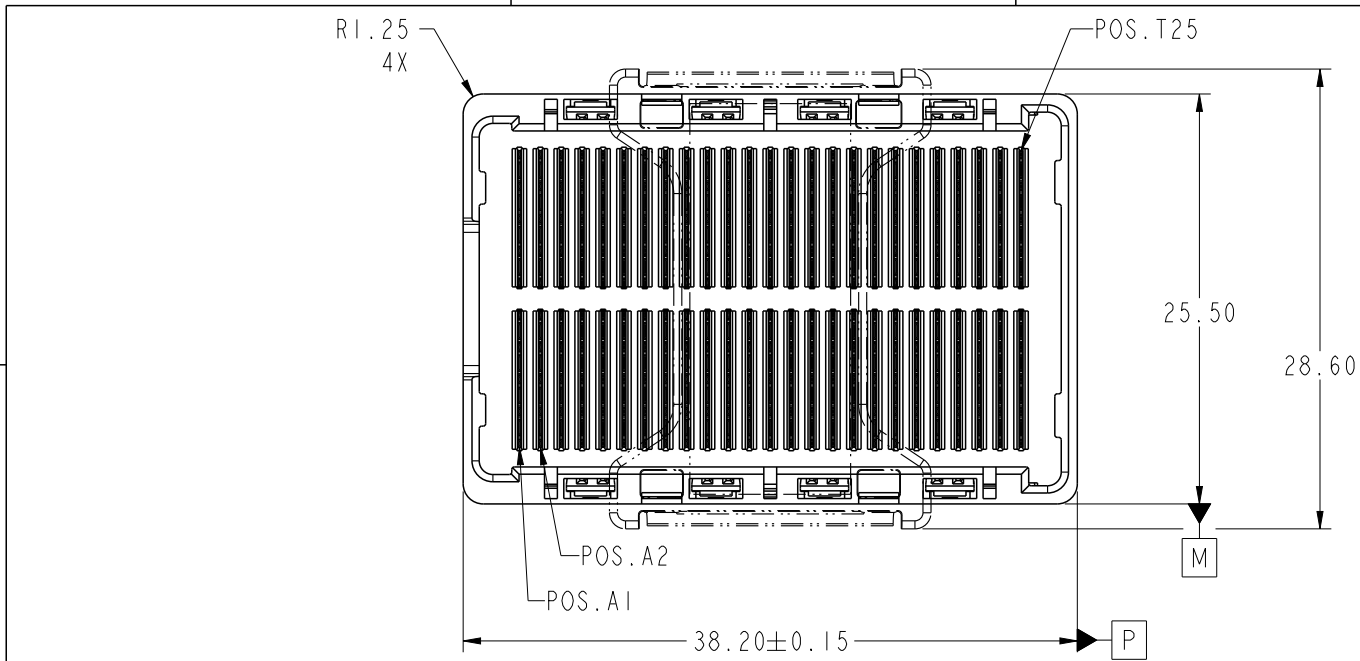


rev	ecn no	dr	date
A	V05-0321	TAB	04/08/05
B	V05-1009	LP	11/7/05
C	V06-0239	LP	3/27/06
D	V06-0558	LP	2006/06/21
E	V07-0440	LP	2007-07-09
F	V09-0071	PK	2009-02-24



spec ref	-	dr	Bill Lin	2010/02/02	projection	mm	size	A4	scale	1:1																		
tolerance std	ASME Y14.5	eng	Nickor Zuo	2011/06/13			ecn no	ELX-DG-003943-1																				
	TOLERANCES UNLESS OTHERWISE SPECIFIED	chr	Alex Cao	2011/06/24				product family	GIG-Array	rel level	Released																	
surface	<table border="1"> <tr> <td>linear</td> <td>0.X</td> <td>±0.30</td> </tr> <tr> <td></td> <td>0.XX</td> <td>±0.10</td> </tr> <tr> <td></td> <td>0.XXX</td> <td>±0.05</td> </tr> <tr> <td>angular</td> <td>0°</td> <td>±2°</td> </tr> </table>	linear	0.X	±0.30		0.XX	±0.10		0.XXX	±0.05	angular	0°	±2°	appr	Pei-Ming Zheng	2011/06/27			<table border="1"> <tr> <td>title</td> <td>GIG-Array</td> </tr> <tr> <td>part no</td> <td>13mm PLUG ASSY. 200 SIG. POS.</td> </tr> </table>	title	GIG-Array	part no	13mm PLUG ASSY. 200 SIG. POS.	<table border="1"> <tr> <td>dwg no</td> <td>10055142</td> </tr> </table>	dwg no	10055142	rev	G
linear	0.X	±0.30																										
	0.XX	±0.10																										
	0.XXX	±0.05																										
angular	0°	±2°																										
title	GIG-Array																											
part no	13mm PLUG ASSY. 200 SIG. POS.																											
dwg no	10055142																											
		www.fci.com	cat. no.	Product - Customer Drw			sheet 1 of 5																					

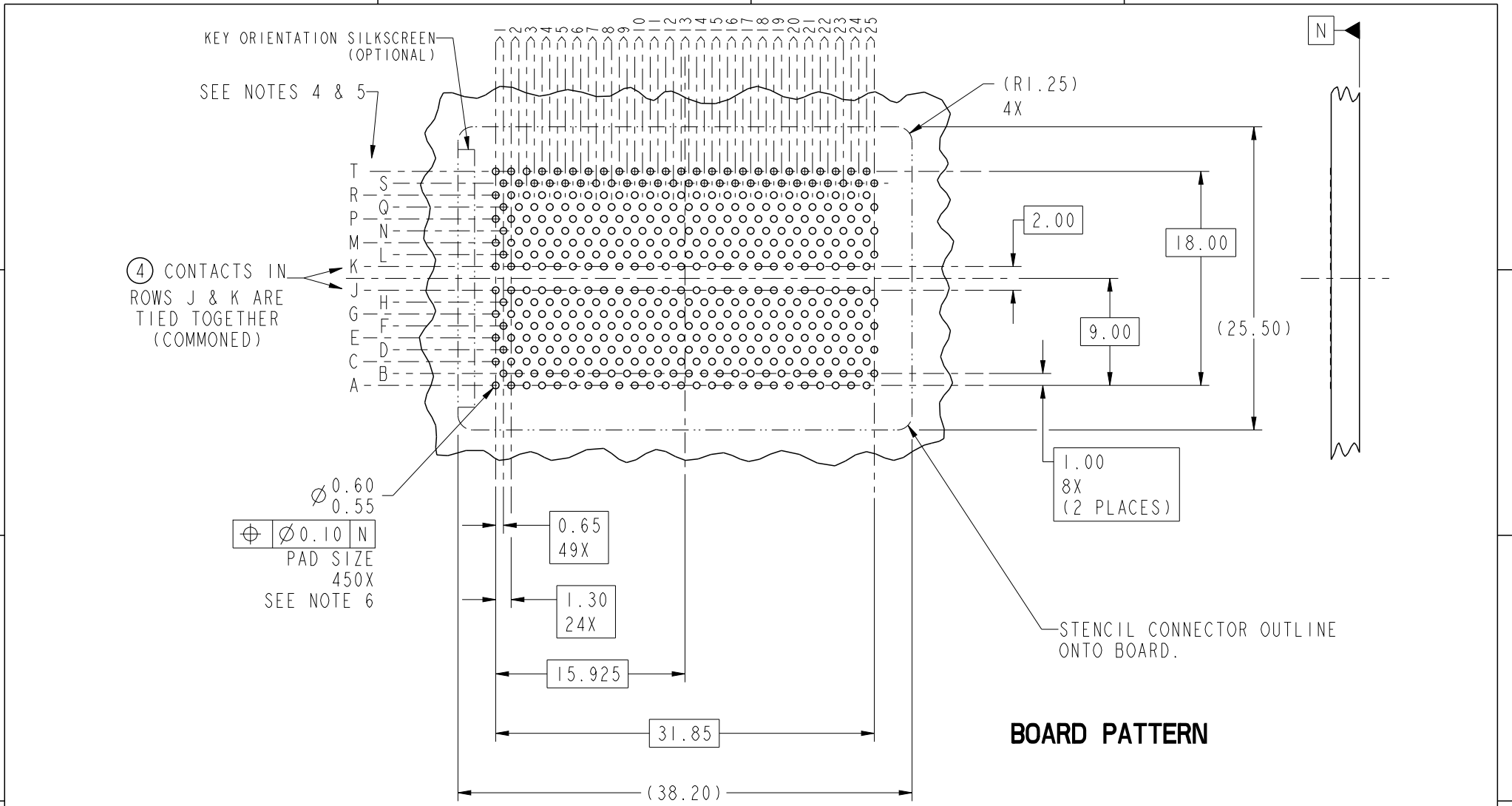


Copyright FCI.

ProjE File - REV C - 2009-06-09



Copyright FCI.



BOARD PATTERN

spec ref	-	dr	Bill Lin	2010/02/02	projection	mm	size	A4	scale	1:1												
tolerance std	ASME Y14.5	eng	Nickor Zuo	2011/06/13			ecn no		ELX-DG-003943-1													
TOLERANCES UNLESS OTHERWISE SPECIFIED		chr	Alex Cao	2011/06/24			rel level		Released													
surface	<table border="1"> <tr><td>linear</td><td>0.X</td><td>±0.30</td></tr> <tr><td></td><td>0.XX</td><td>±0.10</td></tr> <tr><td></td><td>0.XXX</td><td>±0.05</td></tr> <tr><td>angular</td><td>0°</td><td>±2°</td></tr> </table>	linear	0.X	±0.30				0.XX	±0.10		0.XXX	±0.05	angular	0°	±2°	appr	Pei-Ming Zheng	2011/06/27	product family		GIG-Array	
linear	0.X	±0.30																				
	0.XX	±0.10																				
	0.XXX	±0.05																				
angular	0°	±2°																				
				title GIG-Array 13mm PLUG ASSY. 200 SIG. POS.		dwg no 10055142		www.fci.com		cat. no. Product - Customer Drw	sheet 2 of 5											

PrdE File - REV C - 2009-06-09

1

2

3

4

A

B

C

D

A

B

C

D

D1
SIGNAL/GROUND

C1
GROUND

B1
SIGNAL/GROUND

A1
GROUND

A2
GROUND

A3
GROUND

B2-B3
DIFFERENTIAL PAIR
TYPICAL

PLUG INTERFACE DESCRIPTION

spec ref		-		dr	Bill Lin	2010/02/02	projection 	mm 	size	A4	scale	1:1				
tolerance std	ASME Y14.5	TOLERANCES UNLESS OTHERWISE SPECIFIED				eng			Nickor Zuo	2011/06/13	ecn no	ELX-DG-003943-1				
						chr			Alex Cao	2011/06/24		product family	GIG-Array		rel level	Released
surface	✓	linear	0.X	±0.30		title	GIG-Array		dwg no	10055142			rev			
			0.XX	±0.10								cat. no.		Product - Customer Drw		sheet 3 of 5
			0.XXX	±0.05												
		angular	0°	±2°	cat. no.		Product - Customer Drw		sheet 3 of 5							



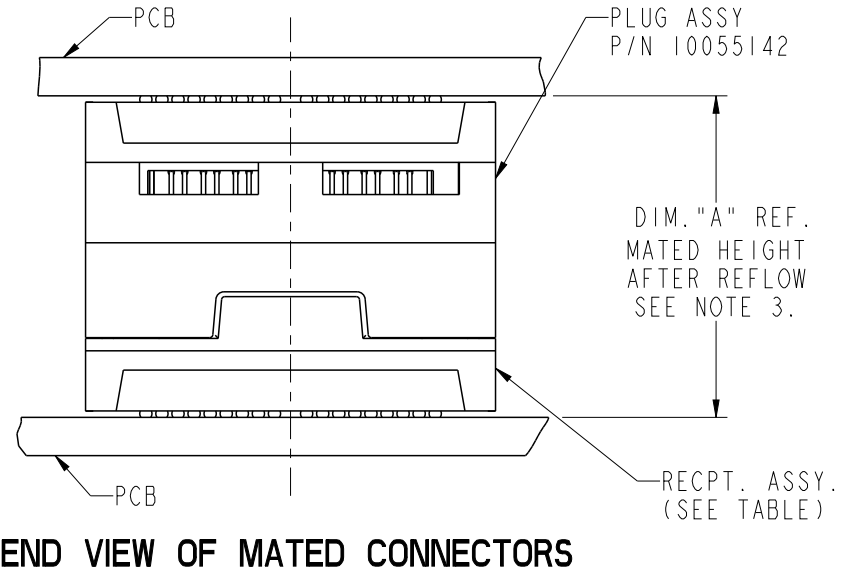
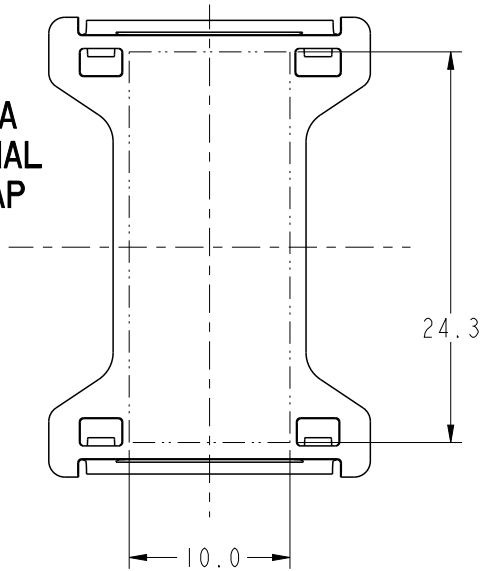
Copyright FCI.

2

3

4

FLAT AREA
FOR OPTIONAL
PICK-UP CAP



END VIEW OF MATED CONNECTORS

DIM. "A"	RECPT. ASSY. P/N
28	55741
18	55740



Copyright FCI.

spec ref		-		dr	Bill Lin	2010/02/02	projection 	mm 	size	A4	scale	1:1
tolerance std	ASME Y14.5	TOLERANCES UNLESS OTHERWISE SPECIFIED		eng	Nickor Zuo	2011/06/13			ecn no	ELX-DG-003943-1		
				chr	Alex Cao	2011/06/24				rel level	Released	
surface	✓	linear	0.X	±0.30	 www.fci.com	title GIG-Array 13mm PLUG ASSY. 200 SIG. POS.	dwg no 10055142	rev G				
		0.XX	±0.10	cat. no.					Product - Customer Drw	sheet 4 of 5		
		0.XXX	±0.05									
		angular	0°	±2°								

PRODUCT NUMBER	SOLDER BALL COMPOSITION	CONTACT PLATING PERFORMANCE LEVEL
10055142-001	STANDARD (EUTECTIC)	PERFORMANCE-BASED PLATING, QUALIFIED TO MEET THE REQUIREMENTS OF FCI PRODUCT SPECIFICATION GS-12-192, INCLUDING TELCORDIA CENTRAL OFFICE
10055142-001LF	LEADFREE	
10055142-201	STANDARD (EUTECTIC)	Au over Ni
10055142-201LF	LEADFREE	

NOTES:

- ① MAT'L:
HOUSING: LCP
CONTACT: COPPER ALLOY
PLATING (CONTACT): Au OVER Ni.
UL RATING: 94 V-0
SOLDER BALL: (SEE TABLE) EUTECTIC
SnPb OR LEADFREE 95.5 Sn/4Ag/0.5Cu
- ② SOLDER BALLS WILL NOT BE PERFECT SPHERICAL SHAPE DUE TO REFLOW ATTACHMENT.
- ③ MATED HEIGHT EFFECTED BY CUSTOMERS' PCB PAD SIZE, PLATING, SOLDER REFLOW PROFILE & SOLDER PASTE.
- ④ CONTACTS IN ROWS A,C,E,G,J,K,M,P,R AND T ARE SINGLE BEAM CONTACTS, TYPICALLY USED AS GROUND PINS. (NOTE: CONTACTS IN ROWS J & K ARE TIED TOGETHER [COMMONED])
- ⑤ CONTACTS IN ROWS B,D,F,H,L,N,Q AND S ARE DUAL BEAM CONTACTS, TYPICALLY USED AS SIGNAL PINS.
- ⑥ SPECIFIED POSITIONAL TOLERANCE DEFINES PAD TO PAD LOCATION WITHIN LAND PATTERN. POSITIONAL TOLERANCE OF LAND PATTERN TO FUDICIAL MARKS OR PCB DATUMS SHALL BE DEFINED BY CUSTOMER. FOR RECOMMENDED PRODUCT APPLICATION AND PCB DESIGN DETAILS, SEE DOC. NO. GS-20-016.
- ⑦ FOR PROPER APPLICATION FOLLOW FCI APPLICATION SPECIFICATION GS-20-033 LEADFREE SOLDER BALLS WILL NOT SOLDER PROPERLY IN A LEADED SOLDER PROCESS DUE TO A HIGHER REFLOW TEMPERATURE, LEAD FREE PRODUCT IS THEREFORE NOT BACKWARDS COMPATIBLE WITH LEADED OR SOME SOLDERING APPLICATIONS, REFERENCE FCI APPLICATION SPECIFICATION.
- ⑧ THIS PRODUCT MEETS THE EUROPEAN UNION DIRECTIVES AND OTHER COUNTRY REGULATIONS AS DESCRIBED IN GS-22-008 PRODUCT MEETING THIS DIRECTIVE IS IDENTIFIED IN THE LOT CODE NUMBER MARKED ON EACH PART BY HAVING AN "X" IN THE SEVENTH CHARACTER POSITION.



spec ref	-			dr	Bill Lin	2010/02/02	projection 	mm 	size	A4	scale	1:1
tolerance std	TOLERANCES UNLESS OTHERWISE SPECIFIED			eng	Nickor Zuo	2011/06/13			ecn no	ELX-DG-003943-1		
ASME Y14.5				chr	Alex Cao	2011/06/24				rel level	Released	
surface	linear	0.X	±0.30	appr	Pei-Ming Zheng	2011/06/27	product family	GIG-Array		rev		
-		0.XX	±0.10		www.fci.com	title	GIG-Array		dwg no	10055142		G
		0.XXX	±0.05				13mm PLUG ASSY. 200 SIG. POS.					
	angular	0°	±2°	cat. no.	Product - Customer Drw			sheet 5 of 5				



Компания «ЭлектроПласт» предлагает заключение долгосрочных отношений при поставках импортных электронных компонентов на взаимовыгодных условиях!

Наши преимущества:

- Оперативные поставки широкого спектра электронных компонентов отечественного и импортного производства напрямую от производителей и с крупнейших мировых складов;
- Поставка более 17-ти миллионов наименований электронных компонентов;
- Поставка сложных, дефицитных, либо снятых с производства позиций;
- Оперативные сроки поставки под заказ (от 5 рабочих дней);
- Экспресс доставка в любую точку России;
- Техническая поддержка проекта, помощь в подборе аналогов, поставка прототипов;
- Система менеджмента качества сертифицирована по Международному стандарту ISO 9001;
- Лицензия ФСБ на осуществление работ с использованием сведений, составляющих государственную тайну;
- Поставка специализированных компонентов (Xilinx, Altera, Analog Devices, Intersil, Interpoint, Microsemi, Aeroflex, Peregrine, Syfer, Eurofarad, Texas Instrument, Miteq, Cobham, E2V, MA-COM, Hittite, Mini-Circuits, General Dynamics и др.);

Помимо этого, одним из направлений компании «ЭлектроПласт» является направление «Источники питания». Мы предлагаем Вам помощь Конструкторского отдела:

- Подбор оптимального решения, техническое обоснование при выборе компонента;
- Подбор аналогов;
- Консультации по применению компонента;
- Поставка образцов и прототипов;
- Техническая поддержка проекта;
- Защита от снятия компонента с производства.



Как с нами связаться

Телефон: 8 (812) 309 58 32 (многоканальный)

Факс: 8 (812) 320-02-42

Электронная почта: org@eplast1.ru

Адрес: 198099, г. Санкт-Петербург, ул. Калинина, дом 2, корпус 4, литера А.