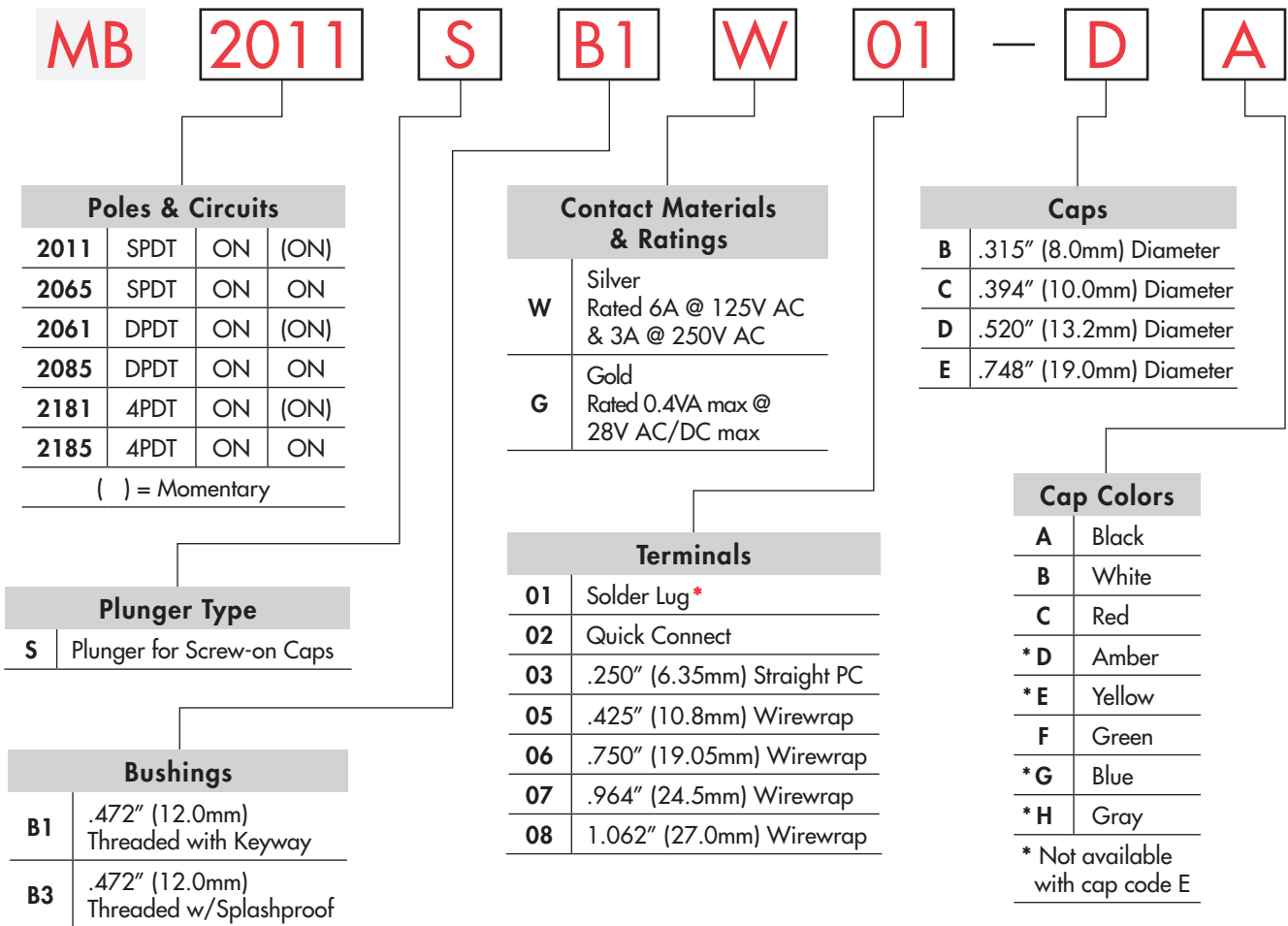


TYPICAL SWITCH ORDERING EXAMPLE



* Wire harness & cable assemblies offered only in Americas

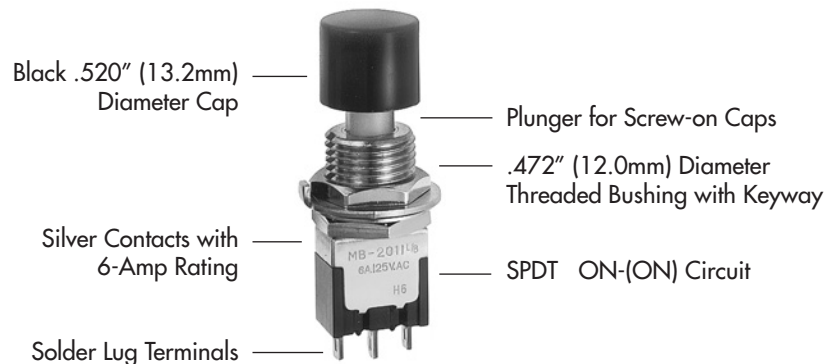
IMPORTANT:



Switches are supplied without UL, cULus & CSA marking unless specified. **UL, cULus & CSA recognized only when ordered with marking on the switch.** Specific models, ratings, & ordering instructions are noted on General Specifications page.

DESCRIPTION FOR TYPICAL ORDERING EXAMPLE

MB2011SB1W01-DA



Toggles

Rockers

Pushbuttons

Illuminated PB

Programmable

Keylocks

Rotaries

Slides

Tactiles

Tilt






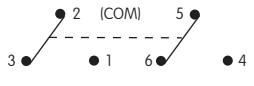
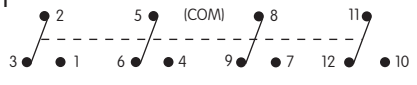
Touch

Indicators

Accessories

Supplement

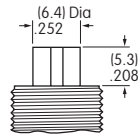
POLES & CIRCUITS

		Plunger Position () = Momentary		Connected Terminals		Throw & Switch Schematics
Pole	Model	Normal 	Down 	Normal 	Down 	Note: Terminal numbers are not actually on the switch.
SP	MB2011 MB2065	ON	(ON)	2-3	2-1	SPDT 
DP	MB2061 MB2085	ON	(ON)	2-3 5-6	2-1 5-4	DPDT 
4P	MB2181 MB2185	ON	(ON)	2-3 5-6 8-9 11-12	2-1 5-4 8-7 11-10	4PDT 

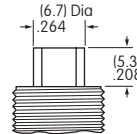
PLUNGER TYPE

S

Plunger for Screw-on Caps
Plunger is plastic for B1 bushing.



Plunger is metal for B3 bushing.



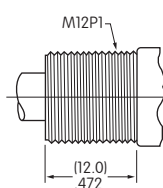
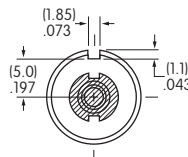
On alternate action models, after transferring circuit, the plunger returns to its original position, and does not latch down.

BUSHINGS

B1

.472" (12.0mm) Diameter Threaded with Keyway

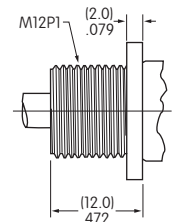
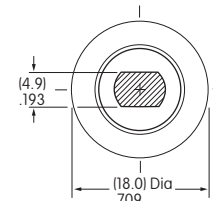
Maximum Panel Thickness with Standard Hardware: .217" (5.5mm)



B3

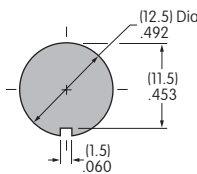
.472" (12.0mm) Diameter Threaded Splashproof

Maximum Panel Thickness with Standard Hardware: .217" (5.5mm)

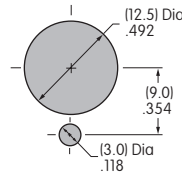


Panel Cutouts

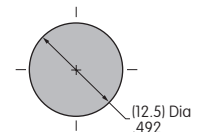
For B1 Bushing with Keyway



For B1 Bushing with Locking Ring



For B3 Bushing without Keyway



CONTACT MATERIALS & RATINGS

W

Silver over Silver

Power Level

6A @ 125V AC & 3A @ 250V AC

G

Gold over Brass or Copper

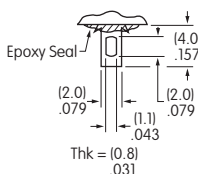
Logic Level

0.4VA maximum @ 28V AC/DC maximum

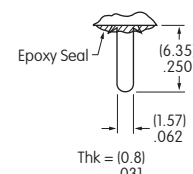
Note: Complete explanation of operating range in Supplement section.

TERMINALS

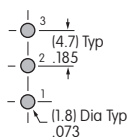
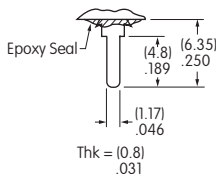
01 Solder Lug



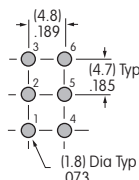
02 .062" (1.57mm) Wide Quick Connect



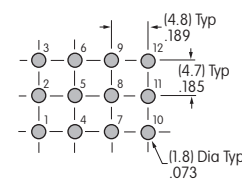
03 .250" (6.35mm) Straight PC



Single Pole



Double Pole



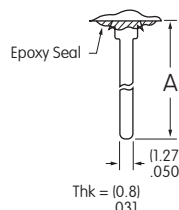
Four Pole

05 .425" (10.8mm) Wirewrap or Extended PC

06 .750" (19.05mm) Wirewrap or Extended PC

07 .964" (24.5mm) Wirewrap or Extended PC

08 1.062" (27.0mm) Wirewrap or Extended PC



If using as extended PC terminal, refer to the above footprints.

Dimension A = terminal lengths as shown beside the terminal codes at the left.

CAPS & CAP COLORS

B AT078
.315" (8.0mm)
Diameter Screw-on Cap

C AT079
.394" (10.0mm)
Diameter Screw-on Cap

D AT414
.520" (13.2mm)
Diameter Screw-on Cap

E AT412
.748" (19.0mm)
Diameter Screw-on Cap

Material:
Polystyrene
Finish:
Glossy



Material:
Polystyrene
Finish:
Glossy



Material:
PBT
Finish:
Glossy



Material:
Polystyrene
Finish:
Glossy

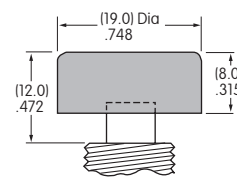
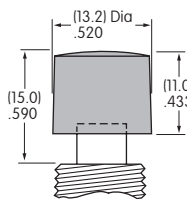
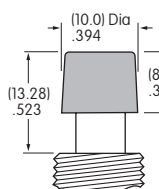
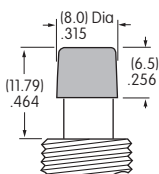


Colors Available:
A B C E F G H

Colors Available:
A B C E F G H

Colors Available:
A B C D E F G H

Colors Available:
A B C F



Cap Color Codes:

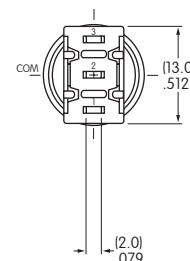
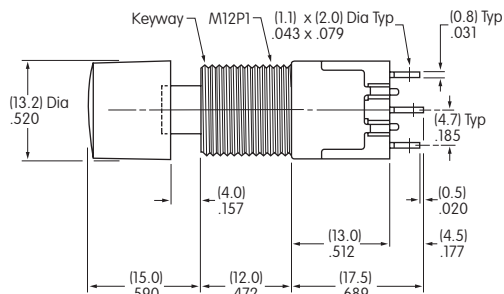
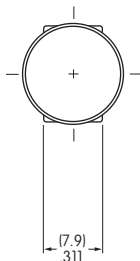
- A** Black
- B** White
- C** Red
- D** Amber
- E** Yellow
- F** Green
- G** Blue
- H** Gray

Toggles
 Rockers
 Pushbuttons
 Illuminated PB
 Programmable
 Keylocks
 Rotaries
 Slides
 Tactiles
 Tilt
 Touch
 Indicators
 Accessories
 Supplement

TYPICAL SWITCH DIMENSIONS

Solder Lug

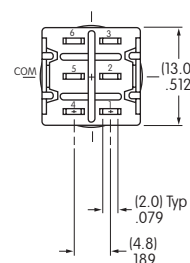
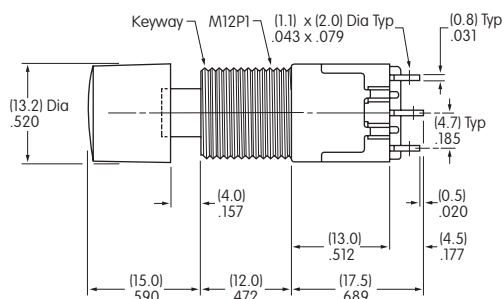
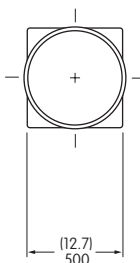
Single Pole



MB2011SB1W01-DA

Solder Lug

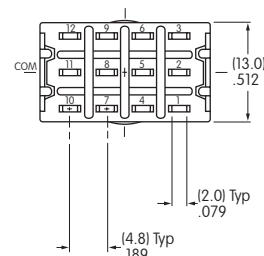
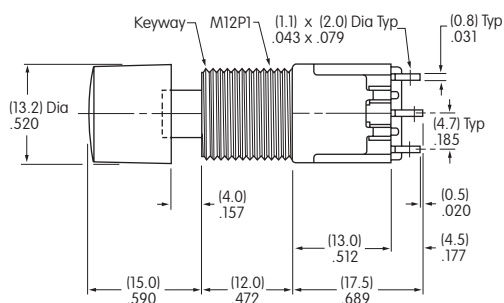
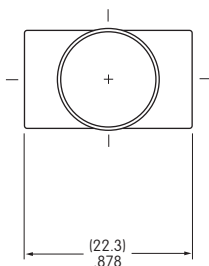
Double Pole



MB2061SB1W01-DA

Solder Lug

Four Pole



MB2181SB1W01-DA

Toggle

Rockers

Pushbuttons

Illuminated PB

Keylocks

Rotaries

Slides

Tactiles

Tilt

Touch

Indicators

Accessories

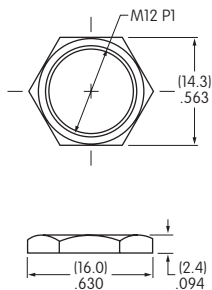
Supplement

HARDWARE

Standard Hardware for B1 Bushing

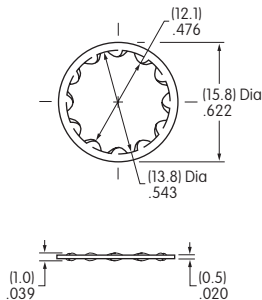
AT503M Hex Face Nut

Material:
Brass with Chrome plating



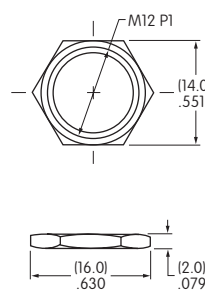
AT508 Lockwasher

Material:
Steel with Zinc/Chromate



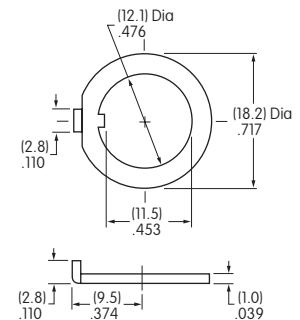
AT527M Hex Nut

Material:
Steel with Nickel plating



AT506M Locking Ring

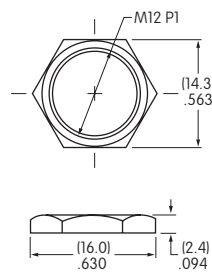
Material:
Steel with Zinc/Chromate



Standard Hardware for B3 Bushing

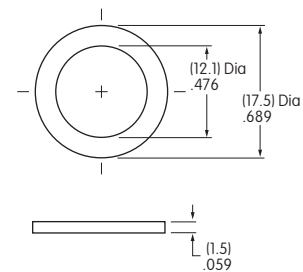
AT503M Hex Face Nut

Material:
Brass with Chrome plating



AT401P O-ring

Material:
Nitrile butadiene rubber

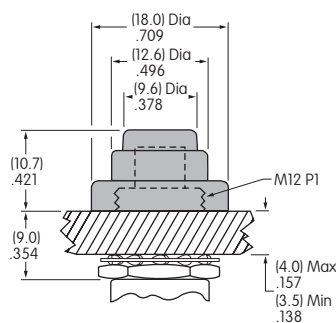


Optional Splashproof Boot for B1 Bushing

AT4043 Splashproof Boot

Material: Silicone Rubber
Operating Life: 10,000 for momentary
30,000 for alternate action

When using a splashproof boot, no cap is required.



CUSTOM ASSEMBLY ORDERING EXAMPLE

The MB2000 pushbutton series offers flexibility to accommodate a variety of applications. Using a basic large bushing model, different accessories can be assembled onto the switch to achieve the mounting variations shown on the following two pages.

- These switches have:
- 12mm diameter threaded bushing with keyway
 - Silver contacts
 - 6-Amp rating
 - Solder lug terminals

Other 12mm bushing options can be used; see details in preceding Large Bushing Ordering tables.

MB2011

SB1W01

4

C

A

Poles & Circuits			
2011	SPDT	ON	(ON)
2065	SPDT	ON	ON
2061	DPDT	ON	(ON)
2085	DPDT	ON	ON
4-pole available			
() = Momentary			

Mounter Shapes For Shroud	
4	Round
5	Rectangular

Cap Colors For Shroud	
A	Black
B	White
C	Red
F	Green
G	Blue
H	Gray

Mounter Colors For Shroud	
A	Black
B	White
H	Gray

Cap Colors For Snap-In	
A	Black
B	White
C	Red
F	Green



Round Shroud
MB2011SB1W01-4C-A



Rectangular Shroud
MB2011SB1W01-5C-A

See custom assemblies on following pages.

Toggles
 Rockers
 Pushbuttons
 Illuminated PB
 Programmable
 Keylocks
 Rotaries
 Slides
 Tactiles
 Tilt
 Touch
 Indicators
 Accessories
 Supplement

MOUNTER SHAPES FOR SHROUDS

4 AT455 Round

Material: Polycarbonate
Colors: A B H



5 AT453 Rectangular

Material: Polycarbonate
Colors: A B H



CAPS & CAP COLORS FOR SHROUDS

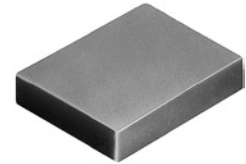
AT454 Round
Insert Cap

Material: Polycarbonate
Colors: A B C F G H



AT452 Rectangular
Insert Cap

Material: Polycarbonate
Colors: A B C F G H



AT080 Screw Adaptor for Insert Caps

Material: Brass



Color Codes:

- A** Black
- B** White
- C** Red
- F** Green
- G** Blue
- H** Gray

Toggle

Rockers

C Pushbuttons

Illuminated PB

Programmable

Keylocks

Rotaries

Slides

Tactiles

Tilt

Touch

Indicators

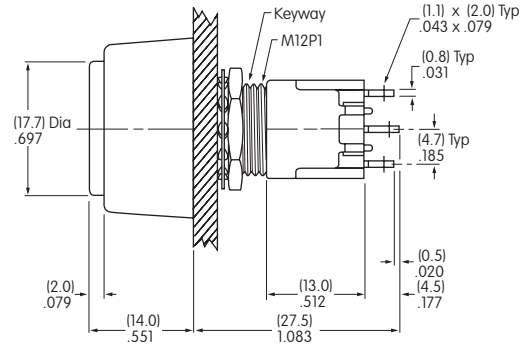
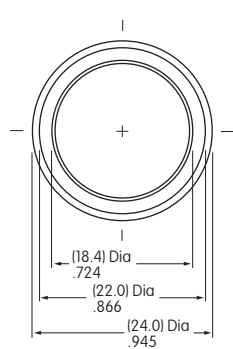
Accessories

Supplement

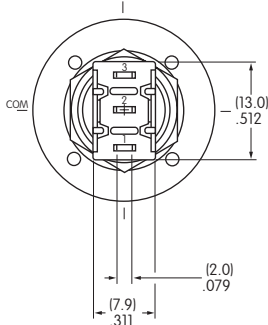
CUSTOM ASSEMBLY WITH ROUND SHROUD



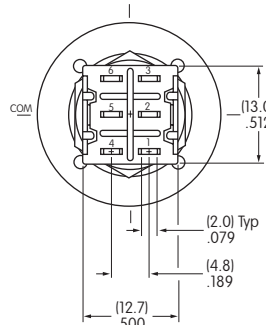
MB2011SB1W01-4C-A



Single Pole



Double Pole

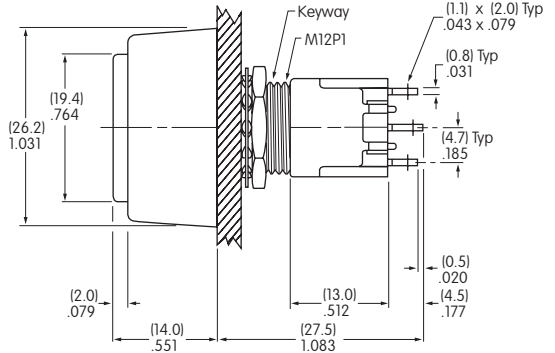
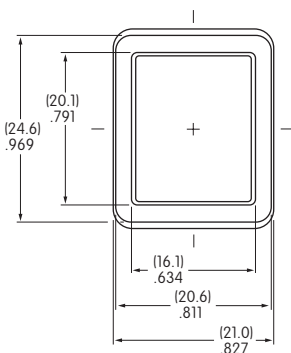


Effective Panel Thickness:
.217" (5.5mm) maximum

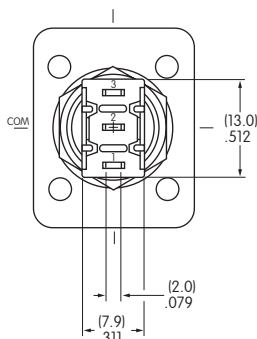
CUSTOM ASSEMBLY WITH RECTANGULAR SHROUD



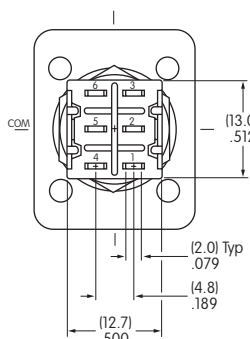
MB2011SB1W01-5C-A



Single Pole



Double Pole



Effective Panel Thickness:
.217" (5.5mm) maximum

Toggle

Rockers

Pushbuttons

Illuminated PB

Programmable

Keylocks

Rotaries

Slides

Tactiles

Tilt

Touch

Indicators

Accessories

Supplement



Компания «ЭлектроПласт» предлагает заключение долгосрочных отношений при поставках импортных электронных компонентов на взаимовыгодных условиях!

Наши преимущества:

- Оперативные поставки широкого спектра электронных компонентов отечественного и импортного производства напрямую от производителей и с крупнейших мировых складов;
- Поставка более 17-ти миллионов наименований электронных компонентов;
- Поставка сложных, дефицитных, либо снятых с производства позиций;
- Оперативные сроки поставки под заказ (от 5 рабочих дней);
- Экспресс доставка в любую точку России;
- Техническая поддержка проекта, помощь в подборе аналогов, поставка прототипов;
- Система менеджмента качества сертифицирована по Международному стандарту ISO 9001;
- Лицензия ФСБ на осуществление работ с использованием сведений, составляющих государственную тайну;
- Поставка специализированных компонентов (Xilinx, Altera, Analog Devices, Intersil, Interpoint, Microsemi, Aeroflex, Peregrine, Syfer, Eurofarad, Texas Instrument, Miteq, Cobham, E2V, MA-COM, Hittite, Mini-Circuits, General Dynamics и др.);

Помимо этого, одним из направлений компании «ЭлектроПласт» является направление «Источники питания». Мы предлагаем Вам помощь Конструкторского отдела:

- Подбор оптимального решения, техническое обоснование при выборе компонента;
- Подбор аналогов;
- Консультации по применению компонента;
- Поставка образцов и прототипов;
- Техническая поддержка проекта;
- Защита от снятия компонента с производства.



Как с нами связаться

Телефон: 8 (812) 309 58 32 (многоканальный)

Факс: 8 (812) 320-02-42

Электронная почта: org@eplast1.ru

Адрес: 198099, г. Санкт-Петербург, ул. Калинина, дом 2, корпус 4, литера А.