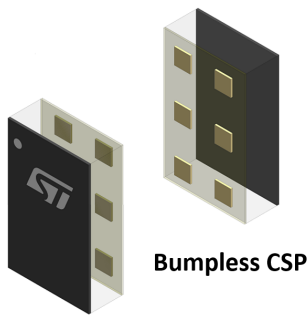
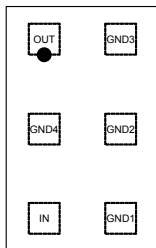


## 2.4 GHz low pass filter matched to STM32WB55Cx/Rx



Top view (pads down)



### Features

- Integrated impedance matching to STM32WB55Cx and STM32WB55Rx
- LGA footprint compatible
- 50  $\Omega$  nominal impedance on antenna side
- Deep rejection harmonics filter
- Low insertion loss
- Small footprint
- Low thickness  $\leq 450 \mu\text{m}$
- High RF performance
- RF BOM and area reduction
- ECOPACK<sup>®2</sup> compliant

### Applications

- Bluetooth 5
- OpenThread
- Zigbee<sup>®</sup>
- IEEE 802.15.4
- Optimized for STM32WB55Cx and STM32WB55Rx

### Description

The MLPF-WB55-01E3 integrates an impedance matching network and harmonics filter. The matching impedance network has been tailored to maximize the RF performance of STM32WB55xx. This device uses STMicroelectronics IPD technology on non-conductive glass substrate which optimizes RF performance.

Product status link

[MLPF-WB55-01E3](#)

# 1 Characteristics

**Table 1. Absolute ratings ( $T_{amb} = 25\text{ °C}$ )**

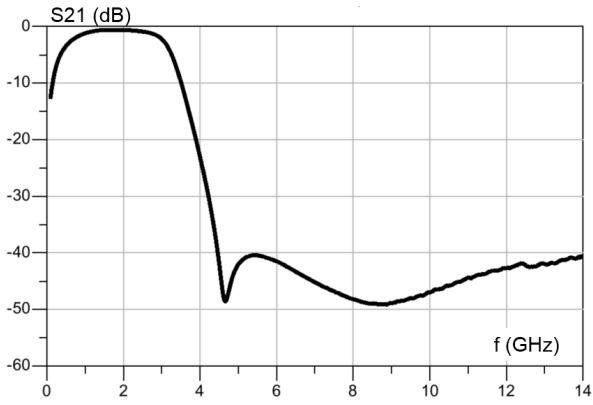
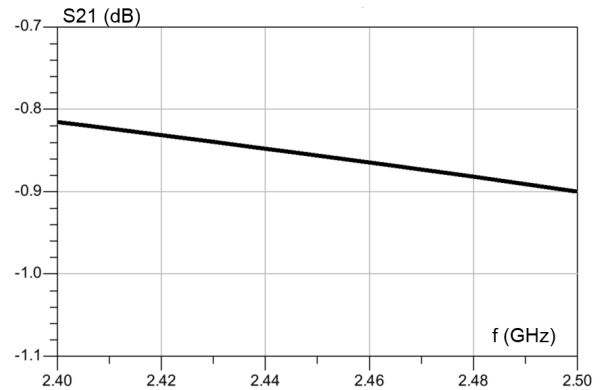
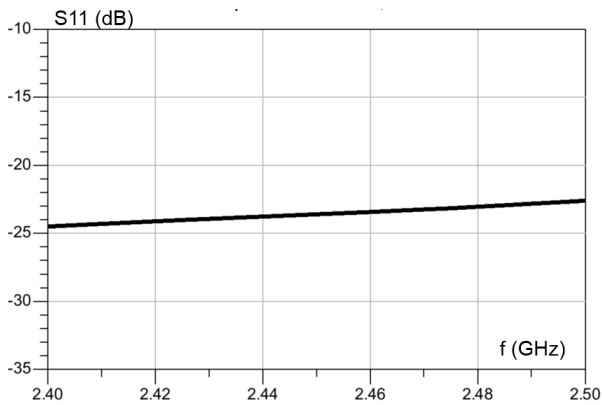
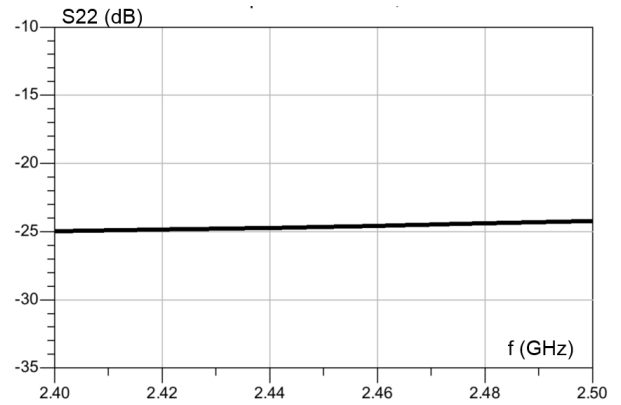
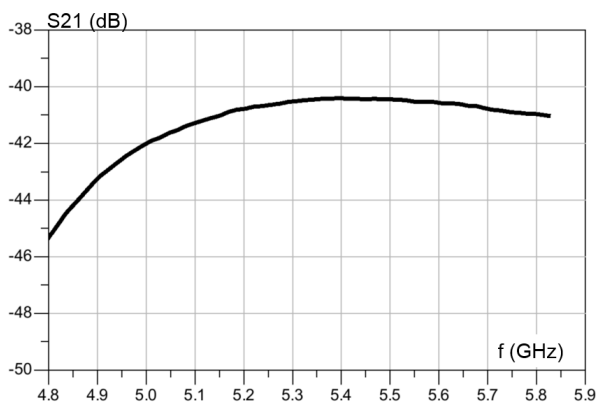
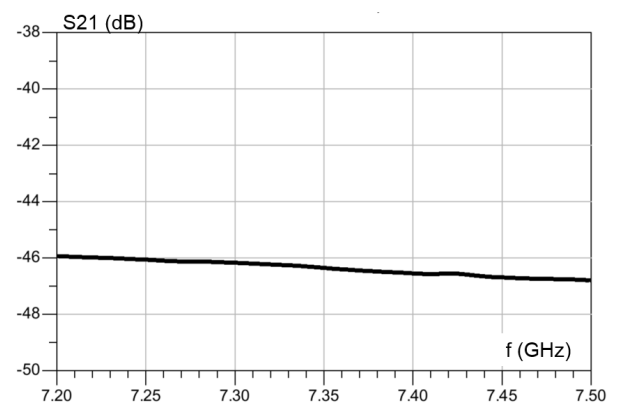
Symbol	Parameter	Value	Unit
$P_{IN}$	Input power $RF_{IN}$	10	dBm
$V_{ESD}$	ESD ratings human body model (JESD22-A114-C), all I/O one at a time while others connected to GND	2000	V
	ESD ratings machine model, all I/O	200	
$T_{OP}$	Maximum operating temperature	-40 to +105	°C

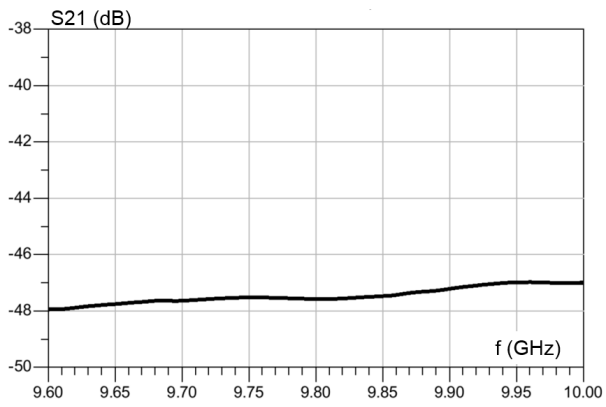
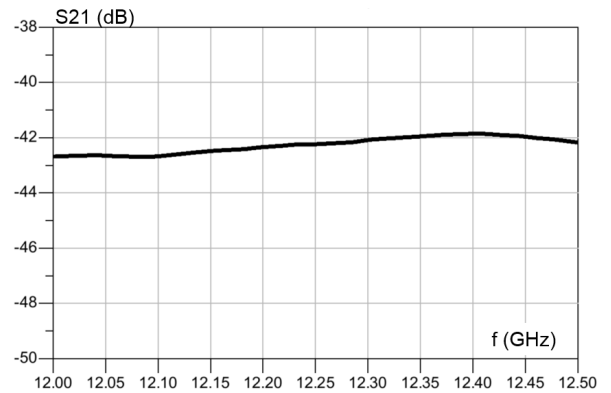
**Table 2. Impedances( $T_{amb} = 25\text{ °C}$ )**

Symbol	Parameter	Value			Unit
		Min.	Typ.	Max.	
$Z_{IN}$	STM32WB55xx single-ended impedance	-	matched to STM32WB55Cx and STM32WB55Rx	-	$\Omega$
$Z_{OUT}$	Antenna impedance	-	50	-	$\Omega$

**Table 3. Electrical characteristics and RF performance ( $T_{amb} = 25\text{ °C}$ )**

Symbol	Parameter	Value			Unit
		Min.	Typ.	Max.	
f	Frequency range	2400		2500	MHz
IL	Insertion loss $ S_{21} $		0.90	1.1	dB
$RL_{IN}$	Input return loss $ S_{11} $	14	22		dB
$RL_{OUT}$	Output return loss $ S_{22} $	16	24		dB
Att	Harmonic rejection levels $ S_{21} $	Attenuation at 2fo	38	40	dB
		Attenuation at 3fo	43	45	dB
		Attenuation at 4fo	41	46	dB
		Attenuation at 5fo	35	42	dB

**1.1 RF measurement**
**Figure 1. Transmission (dB)**

**Figure 2. Insertion loss (dB)**

**Figure 3. Input return loss (dB)**

**Figure 4. Output return loss (dB)**

**Figure 5. Attenuation 2f0 (dB)**

**Figure 6. Attenuation 3f0 (dB)**


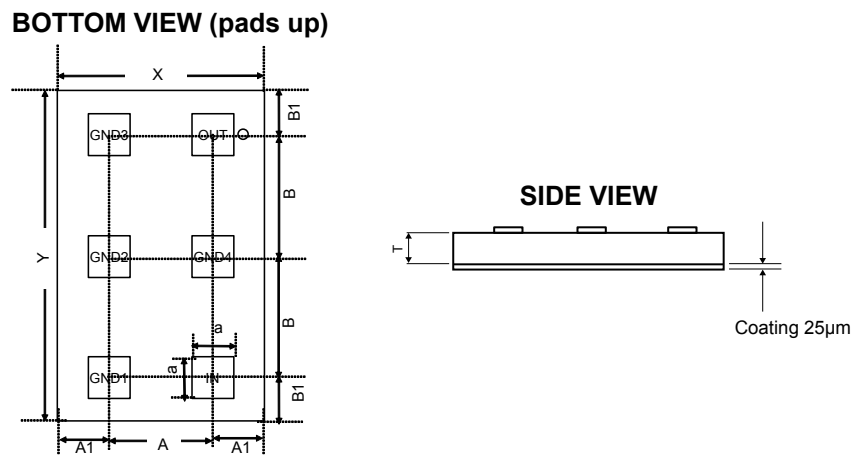
**Figure 7. Attenuation 4f0 (dB)**

**Figure 8. Attenuation 5f0 (dB)**


## 2 Package information

In order to meet environmental requirements, ST offers these devices in different grades of **ECOPACK®** packages, depending on their level of environmental compliance. ECOPACK® specifications, grade definitions and product status are available at: [www.st.com](http://www.st.com). ECOPACK® is an ST trademark.

### 2.1 Bumpless CSP package information

**Figure 9. Bumpless CSP package outline**



**Table 4. Bumpless CSP package mechanical data**

Parameter	Description	Min.	Typ.	Max.	Unit
X	X dimension of the die	975	1000	1025	µm
Y	Y dimension of the die	1575	1600	1625	µm
A	X pitch		500		µm
B	Y pitch		587		µm
A1	Distance from bump to edge of die on X axis		250		µm
B1	Distance from pad to edge of die on Y axis		213		µm
a	Pad dimension		200		µm
T	Substrate thickness	375	400	425	µm

Figure 10. Marking

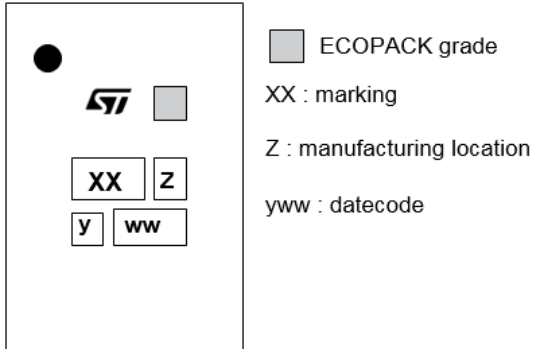
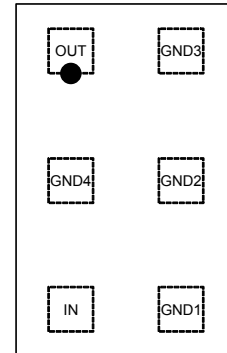


Figure 11. Top view

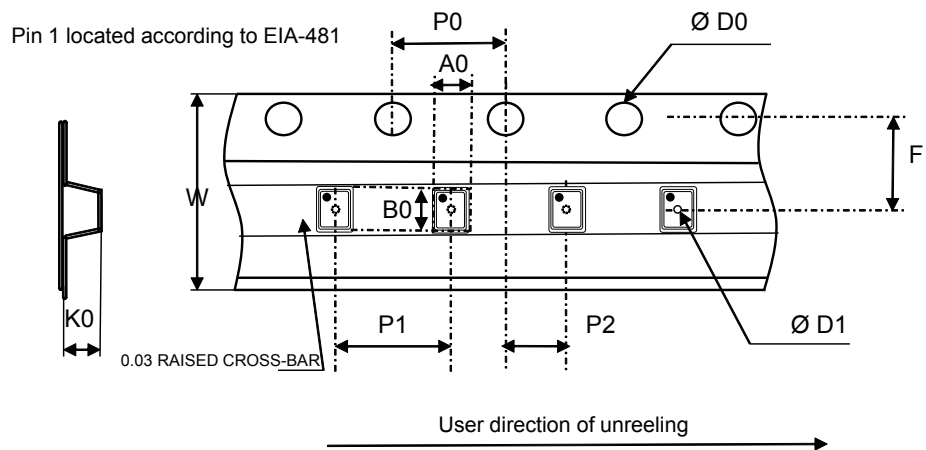
Top view (pads down)



More packing information is available in the application note:

- AN2348 Flip-Chip: "Package description and recommendations for use"

Figure 12. Tape and reel outline



Note: Pocket dimensions are not on scale  
Pocket shape may vary depending on package

**Table 5. Tape and reel mechanical data**

Ref	Dimensions		
	Millimeters		
	Min	Typ	Max
A0	1.04	1.09	1.14
B0	1.64	1.69	1.74
K0	0.47	0.52	0.57
P1	3.9	4.0	4.1
P0	3.9	4.0	4.1
Ø D0	1.4	1.5	1.6
Ø D1	0.35	0.40	0.45
F	3.45	3.50	3.55
P2	1.95	2.00	2.05
W	7.9	8.0	8.3

**Table 6. Pad description top view (pads down)**

Pad ref	Pad name	Description
A1	OUT	Antenna
A2	GND4	Ground
A3	IN	STM32WB55 RF out
B1	GND3	Ground
B2	GND2	Ground
B3	GND1	Ground

### 3 Recommendation on PCB assembly

#### 3.1 Land pattern

Figure 13. PCB land pattern recommendations

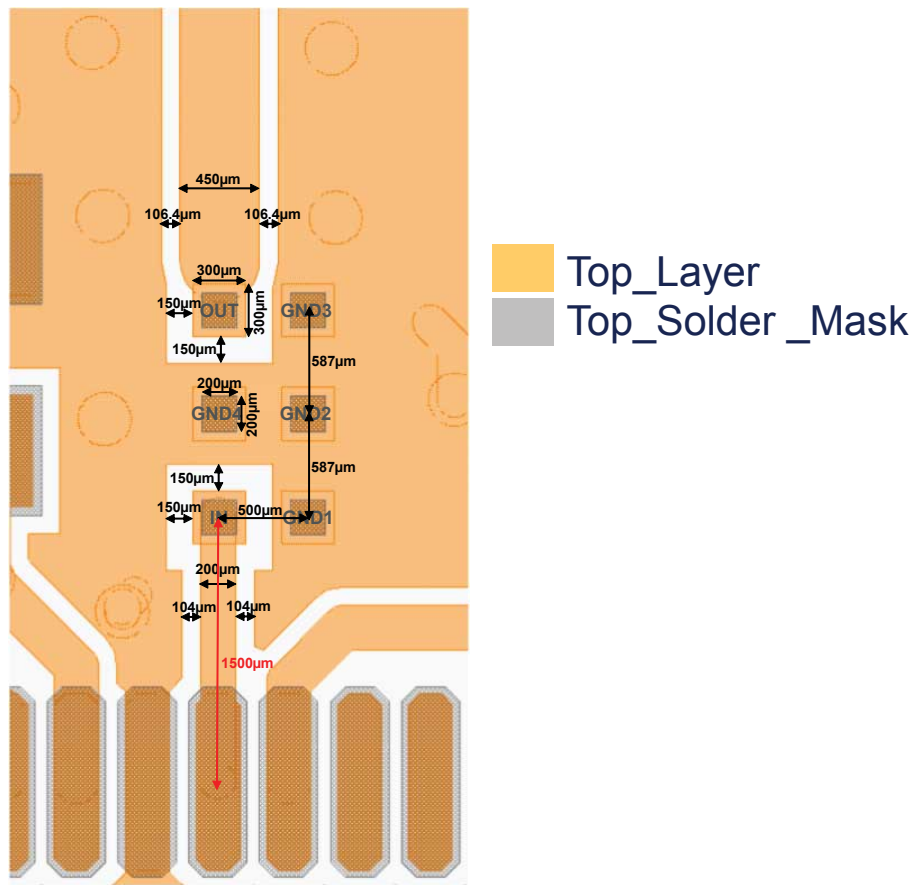
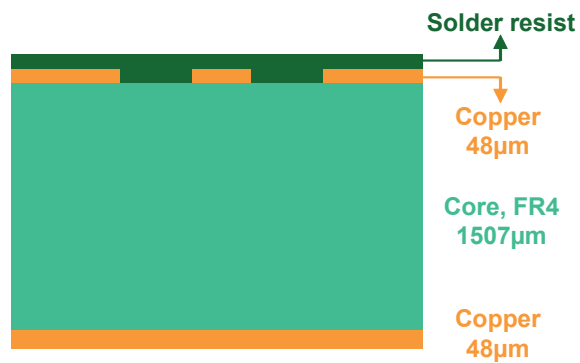


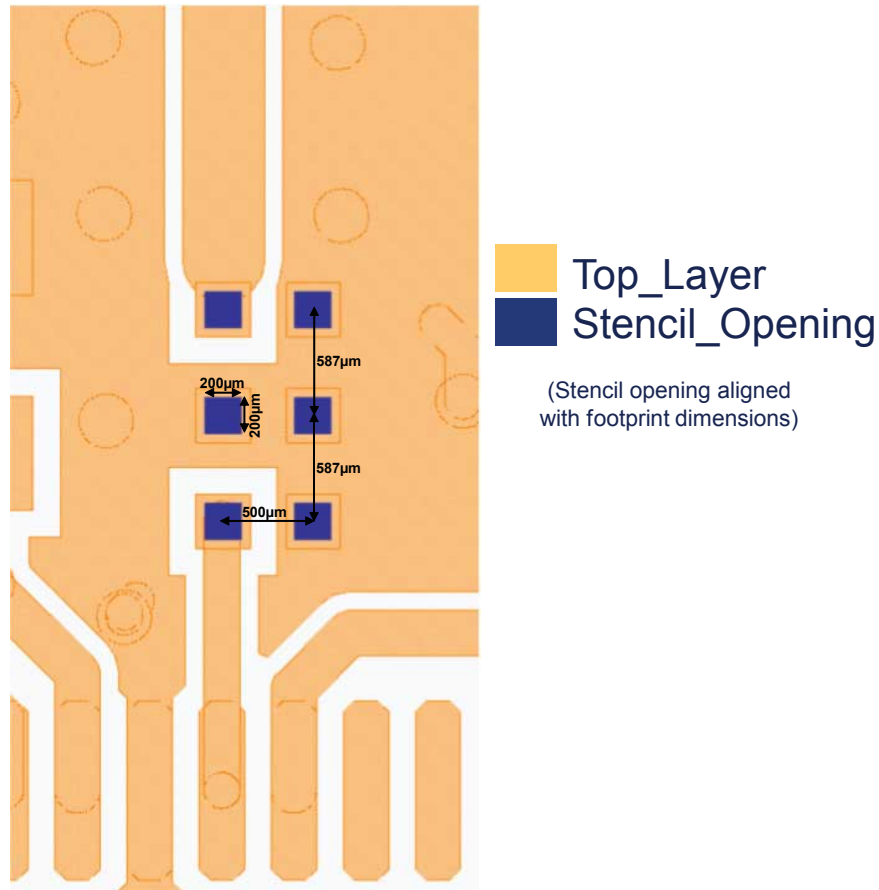
Figure 14. PCB stack-up recommendations





### 3.2 Stencil opening design

Figure 15. Stencil opening recommendations



### 3.3 Solder paste

1. 100 µm solder stencil thickness is recommended
2. Halide-free flux qualification ROL0 according to ANSI/J-STD-004.
3. “No clean” solder paste is recommended.
4. Offers a high tack force to resist component movement during PCB movement.
5. Solder paste with fine particles: powder particle size is 20-45 µm.

### 3.4 Placement

1. Manual positioning is not recommended.
2. It is recommended to use the lead recognition capabilities of the placement system, not the outline centering
3. Standard tolerance of  $\pm 0.05$  mm is recommended.
4. 1.0 N placement force is recommended. Too much placement force can lead to squeezed out solder paste and cause solder joints to short. Too low placement force can lead to insufficient contact between package and solder paste that could cause open solder joints or badly centered packages.
5. To improve the package placement accuracy, a bottom side optical control should be performed with a high resolution tool.
6. For assembly, a perfect supporting of the PCB (all the more on flexible PCB) is recommended during solder paste printing, pick and place and reflow soldering by using optimized tools.

### 3.5 PCB design preference

1. To control the solder paste amount, the closed via is recommended instead of open vias.

2. The position of tracks and open vias in the solder area should be well balanced. A symmetrical layout is recommended, to avoid any tilt phenomena caused by asymmetrical solder paste due to solder flow away.

## 4 Ordering information

Figure 16. Ordering information scheme

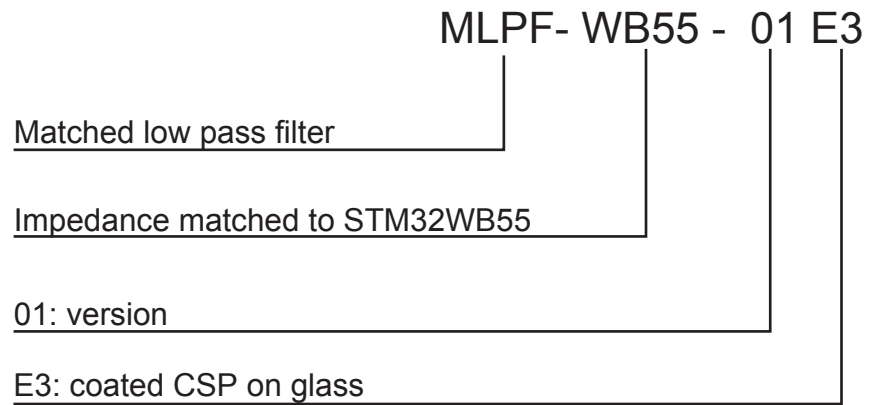


Table 7. Ordering information

Order code	Marking	Package	Weight	Base qty.	Delivery mode
MLPF-WB55-01E3	TS	Bumpless CSP	1.546 mg	5000	Tape and reel (7")

## Revision history

**Table 8. Document revision history**

Date	Version	Changes
12-Dec-2018	1	Initial release.

**IMPORTANT NOTICE – PLEASE READ CAREFULLY**

STMicroelectronics NV and its subsidiaries (“ST”) reserve the right to make changes, corrections, enhancements, modifications, and improvements to ST products and/or to this document at any time without notice. Purchasers should obtain the latest relevant information on ST products before placing orders. ST products are sold pursuant to ST’s terms and conditions of sale in place at the time of order acknowledgement.

Purchasers are solely responsible for the choice, selection, and use of ST products and ST assumes no liability for application assistance or the design of Purchasers’ products.

No license, express or implied, to any intellectual property right is granted by ST herein.

Resale of ST products with provisions different from the information set forth herein shall void any warranty granted by ST for such product.

ST and the ST logo are trademarks of ST. All other product or service names are the property of their respective owners.

Information in this document supersedes and replaces information previously supplied in any prior versions of this document.

© 2018 STMicroelectronics – All rights reserved



Компания «ЭлектроПласт» предлагает заключение долгосрочных отношений при поставках импортных электронных компонентов на взаимовыгодных условиях!

Наши преимущества:

- Оперативные поставки широкого спектра электронных компонентов отечественного и импортного производства напрямую от производителей и с крупнейших мировых складов;
- Поставка более 17-ти миллионов наименований электронных компонентов;
- Поставка сложных, дефицитных, либо снятых с производства позиций;
- Оперативные сроки поставки под заказ (от 5 рабочих дней);
- Экспресс доставка в любую точку России;
- Техническая поддержка проекта, помощь в подборе аналогов, поставка прототипов;
- Система менеджмента качества сертифицирована по Международному стандарту ISO 9001;
- Лицензия ФСБ на осуществление работ с использованием сведений, составляющих государственную тайну;
- Поставка специализированных компонентов (Xilinx, Altera, Analog Devices, Intersil, Interpoint, Microsemi, Aeroflex, Peregrine, Syfer, Eurofarad, Texas Instrument, Miteq, Cobham, E2V, MA-COM, Hittite, Mini-Circuits, General Dynamics и др.);

Помимо этого, одним из направлений компании «ЭлектроПласт» является направление «Источники питания». Мы предлагаем Вам помощь Конструкторского отдела:

- Подбор оптимального решения, техническое обоснование при выборе компонента;
- Подбор аналогов;
- Консультации по применению компонента;
- Поставка образцов и прототипов;
- Техническая поддержка проекта;
- Защита от снятия компонента с производства.



#### Как с нами связаться

**Телефон:** 8 (812) 309 58 32 (многоканальный)

**Факс:** 8 (812) 320-02-42

**Электронная почта:** [org@eplast1.ru](mailto:org@eplast1.ru)

**Адрес:** 198099, г. Санкт-Петербург, ул. Калинина, дом 2, корпус 4, литера А.