

Inverted POWER COMBICON feed-through plugs 10.16 mm pitch DFK-IPC 16/...-ST(F)-10,16

In the inverted versions of the DFK-IPC 16 feed-through connectors, the screw connection on the device side is designed with female instead of male contacts. This gives a touch-proof device output. This prevents the user from coming into contact with the live device interiors.

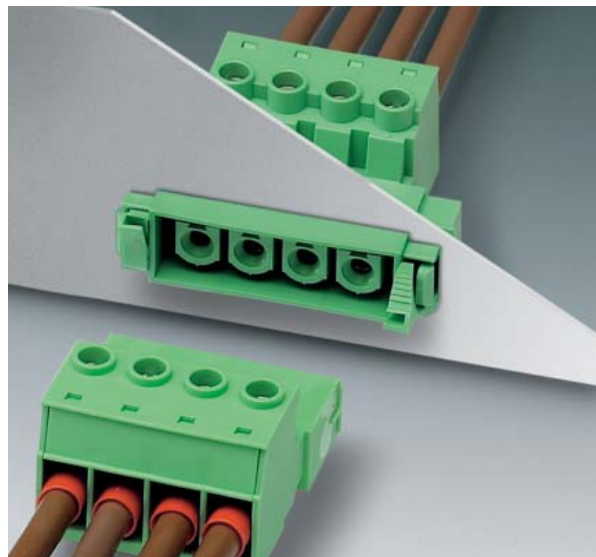
For fastening the feed-through plug connectors in the device housing, there are two possibilities:

- Either the fast snap-lock mechanism without tools or
- The conventional screw fastening.

Both options are included with the product.

The so-called PCB shield metal (in the SH version) provides three options for EMC shielding:

- Discharge of the shielding function to the PCB
- Discharge of the shielding function to the metal housing or
- Discharge through a solder or slip-on connection to the nearest shielding point.



COMBICON Select The COMBICON search engine with CAD downloading



COMBICON Select – the printed circuit board connection software supports your workflow from the PCB and housing layout to the ordering process with:

- Systematic and fast selection of products
- Universal Internet aided engineering with extensive CAD downloading
- Easy-to-use e-shopping functions.

select.phoenixcontact.com/combicon

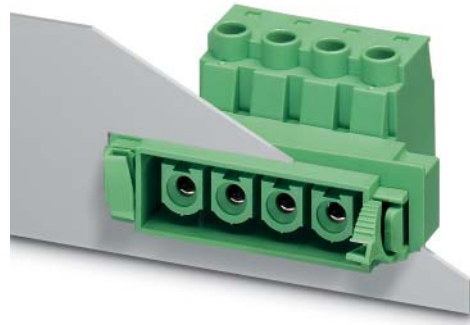
Note:
In compliance with DIN EN 61984, COMBICON plug connectors come without switching capacity. During designated use, they must not be plugged in or disconnected when carrying voltage or under load.



Fast snap-lock mechanism

Screw fastening

**Inverted POWER COMBICON
feed-through plugs
DFK-IPC 16/...-ST-10,16
10.16 mm Pitch**



Description	No. of pos.	Dim. a [mm]
Inverted POWER COMBICON plugs, 10.16 mm pitch, color: green	2	10.16
	3	20.32
	4	30.48
	5	40.64
	6	50.80
	7	60.96
	8	71.12
	9	81.28

Keying profile, is inserted into the slot on the plug and header, red insulating material

Screws, (DIN ISO 7049 screw ST 2,9 x 9,5), for fixing feed-through terminal blocks on the housing wall

Screwdriver, to actuate the terminal screws

Marker card, with 10 pcs., 10-section marker strips, white, self-adhesive, for 100 terminal blocks

Crimp pliers, for ferrules of up to 16 mm²

Technical data

Dimensions
Pitch [mm]

Technical data in accordance with IEC/ DIN VDE

Insulating material group	-
Surge voltage category / contamination class	- / -
Rated voltage	[V]
Rated surge voltage	[kV]
Nominal current / cross section	[A] / [mm ²]
Maximum load current / cross section	[A] / [mm ²]

Connection capacity

Solid / stranded / conductor sizes	[mm ²] / [mm ²] / AWG
Stranded with ferrule without / with plastic sleeve	[mm ²]

Multiple connection (2 conductors with same cross section)

Solid / stranded	[mm ²]
Stranded with ferrules without plastic sleeve	[mm ²]
Stranded with TWIN ferrule with plastic sleeve	[mm ²]

Stripping length [mm]

Internal cylindrical gage (IEC 60947-1) -

Screw thread -

Tightening torque [Nm]

Insulation material

Inflammability class acc. to UL 94

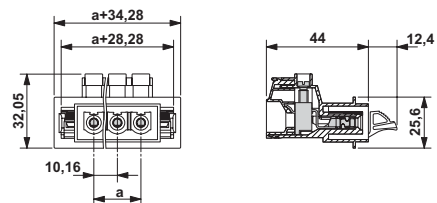
Approval data (UL/CUL and CSA)

Usegroup B	[V] / [A] / AWG
Usegroup C	[V] / [A] / AWG
Usegroup D	[V] / [A] / AWG

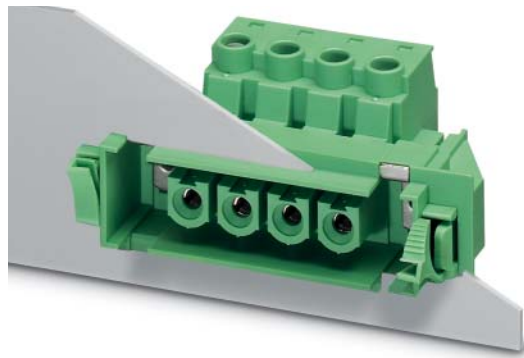
Type	Order No.	Pcs./Pkt.
DFK-IPC 16/ 2-ST-10,16	1703690	10
DFK-IPC 16/ 3-ST-10,16	1703700	10
DFK-IPC 16/ 4-ST-10,16	1703713	10
DFK-IPC 16/ 5-ST-10,16	1703726	10
DFK-IPC 16/ 6-ST-10,16	1703739	10
DFK-IPC 16/ 7-ST-10,16	1703742	10
DFK-IPC 16/ 8-ST-10,16	1703755	10
DFK-IPC 16/ 9-ST-10,16	1703768	10
CP-HCC 4	1600027	100
DFK-PC 16-SS	1705449	20
SZS 1,0 x 4,0	1205066	10
SK 10/5 (see COMBICON catalog)		
CRIMPFOX 16 S	1207983	1
see description 10.16		
	I	
	III/3	III/2
	1000	1000
	8	8
	57 ¹⁾ / 10	6
	76 ²⁾ / 16	
	0.75 - 16 / 0,75 - 16 / 18 - 6	
	0.5 - 16 ²⁾ / 0,5 - 16 ²⁾	
	0.75 - 6 / 0.75 - 6	
	0.5 - 4	
	0.5 - 6	
	14	
	A6	
	M4	
	1.5 - 1.7	
	PA	
	V0	
	600 / 55 / 20 - 6	
	600 / 55 / 20 - 6	
	on request	

¹⁾ Observe derating curve

²⁾ Only in connection with CRIMPFOX 16 S



Inverted POWER COMBICON feed-through plugs DFK-IPC 16/...-STF-10,16 10.16 mm Pitch



Description	No. of pos.	Dim. a [mm]
Inverted POWER COMBICON feed-through plugs, 10.16 mm pitch, color: green, with screw flange	2	10.16
	3	20.32
	4	30.48
	5	40.64
	6	50.80
	7	60.96
	8	71.12
	9	81.28

Keying profile, is inserted into the slot on the plug and header, red insulating material

Screws, (DIN ISO 7049 screw ST 2,9 x 9,5), for fixing feed-through terminal blocks on the housing wall

Screwdriver, to actuate the terminal screws

Marker card, with 10 pcs., 10-section marker strips, white, self-adhesive, for 100 terminal blocks

Crimp pliers, for ferrules of up to 16 mm²

Technical data

Dimensions
Pitch [mm]

Technical data in accordance with IEC/ DIN VDE

Insulating material group	-
Surge voltage category / contamination class	- / -
Rated voltage	[V]
Rated surge voltage	[kV]
Nominal current / cross section	[A] / [mm ²]
Maximum load current / cross section	[A] / [mm ²]

Connection capacity

Solid / stranded / conductor sizes	[mm ²] / [mm ²] / AWG
Stranded with ferrule without / with plastic sleeve	[mm ²]

Multiple connection (2 conductors with same cross section)

Solid / stranded	[mm ²]
Stranded with ferrules without plastic sleeve	[mm ²]
Stranded with TWIN ferrule with plastic sleeve	[mm ²]

Stripping length [mm]

Internal cylindrical gage (IEC 60947-1) -

Screw thread -

Tightening torque [Nm]

Insulation material

Inflammability class acc. to UL 94

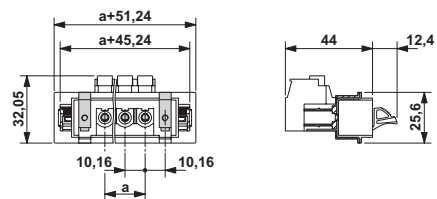
Approval data (UL/CUL and CSA)

Usegroup B	[V] / [A] / AWG
Usegroup C	[V] / [A] / AWG
Usegroup D	[V] / [A] / AWG

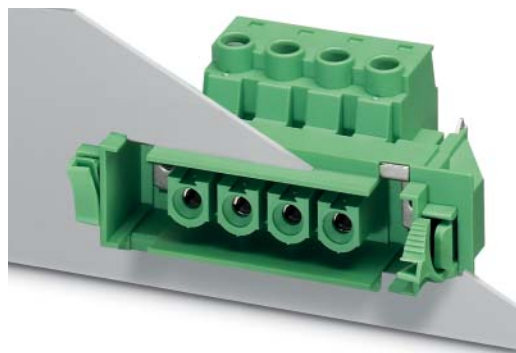
Type	Order No.	Pcs./Pkt.
DFK-IPC 16/ 2-STF-10,16	1703771	10
DFK-IPC 16/ 3-STF-10,16	1703784	10
DFK-IPC 16/ 4-STF-10,16	1703797	10
DFK-IPC 16/ 5-STF-10,16	1703807	10
DFK-IPC 16/ 6-STF-10,16	1703810	10
DFK-IPC 16/ 7-STF-10,16	1703823	10
DFK-IPC 16/ 8-STF-10,16	1703836	10
DFK-IPC 16/ 9-STF-10,16	1703849	10
CP-HCC 4	1600027	100
DFK-PC 16-SS	1705449	20
SZS 1,0 x 4,0	1205066	10
SK 10/5 (see COMBICON catalog)		
CRIMPFOX 16 S	1207983	1
see description		
10.16		
III / 3	I	II / 2
1000	1000	1000
8	8	6
	57 ¹⁾ / 10	
	76 ¹⁾ / 16	
0.75 - 16 / 0.75 - 16 / 18 - 6		
0.5 - 16 ²⁾ / 0.5 - 16 ²⁾		
0.75 - 6 / 0.75 - 6		
0.5 - 4		
0.5 - 6		
14		
A6		
M4		
1.5 - 1.7		
PA		
V0		
600 / 55 / 20 - 6		
600 / 55 / 20 - 6		
on request		

¹⁾ Observe derating curve

²⁾ Only in connection with CRIMPFOX 16 S



Inverted POWER COMBICON feed-through plugs DFK-IPC 16/...-STF-SH-10,16 10.16 mm Pitch



Description	No. of pos.	Dim. a [mm]
Inverted POWER COMBICON plugs, 10.16 mm pitch , color: green, shielded version, with screw flange	2	10.16
	3	20.32
	4	30.48
	5	40.64
	6	50.80
	7	60.96
	8	71.12
	9	81.28

Keying profile, is inserted into the slot on the plug and header, red insulating material

Screws, (DIN ISO 7049 screw ST 2,9 x 9,5), for fixing feed-through terminal blocks on the housing wall

Screwdriver, to actuate the terminal screws

Marker card, with 10 pcs., 10-section marker strips, white, self-adhesive, for 100 terminal blocks

Crimp pliers, for ferrules of up to 16 mm²

Technical data

Dimensions
Pitch [mm]

Technical data in accordance with IEC/ DIN VDE

Insulating material group	-
Surge voltage category / contamination class	- / -
Rated voltage	[V]
Rated surge voltage	[kV]
Nominal current / cross section	[A] / [mm ²]
Maximum load current / cross section	[A] / [mm ²]

Connection capacity

Solid / stranded / conductor sizes	[mm ²] / [mm ²] / AWG	0.75 - 16 / 0.75 - 16 / 18 - 6
Stranded with ferrule without / with plastic sleeve	[mm ²]	0.5 - 16 ²⁾ / 0.5 - 16 ²⁾

Multiple connection (2 conductors with same cross section)

Solid / stranded	[mm ²]	0.75 - 6 / 0.75 - 6
Stranded with ferrules without plastic sleeve	[mm ²]	0.5 - 4
Stranded with TWIN ferrule with plastic sleeve	[mm ²]	0.5 - 6

Stripping length [mm] 14

Internal cylindrical gage (IEC 60947-1) - A6

Screw thread - M4

Tightening torque [Nm] 1.5 - 1.7

Insulation material PA

Inflammability class acc. to UL 94 V0

Approval data (UL/CUL and CSA)

Usegroup B	[V] / [A] / AWG	600 / 55 / 20 - 6
Usegroup C	[V] / [A] / AWG	600 / 55 / 20 - 6
Usegroup D	[V] / [A] / AWG	on request

Type	Order No.	Pcs./Pkt.
DFK-IPC 16/ 2-STF-SH-10,16	1703933	10
DFK-IPC 16/ 3-STF-SH-10,16	1703946	10
DFK-IPC 16/ 4-STF-SH-10,16	1703959	10
DFK-IPC 16/ 5-STF-SH-10,16	1703962	10
DFK-IPC 16/ 6-STF-SH-10,16	1703975	10
DFK-IPC 16/ 7-STF-SH-10,16	1703988	10
DFK-IPC 16/ 8-STF-SH-10,16	1703991	10
DFK-IPC 16/ 9-STF-SH-10,16	1704000	10
CP-HCC 4	1600027	100
DFK-PC 16-SS	1705449	20
SZS 1,0 x 4,0	1205066	10
SK 10/5 (see COMBICON catalog)		
CRIMPFOX 16 S	1207983	1

see description
10.16

III / 3	III / 2	II / 2
1000	1000	1000
8	8	6
	57 ¹⁾ / 10	
	76 ¹⁾ / 16	

0.75 - 16 / 0.75 - 16 / 18 - 6
0.5 - 16²⁾ / 0.5 - 16²⁾

0.75 - 6 / 0.75 - 6

0.5 - 4

0.5 - 6

14

A6

M4

1.5 - 1.7

PA

V0

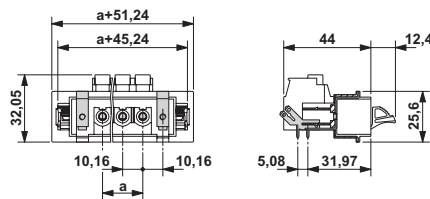
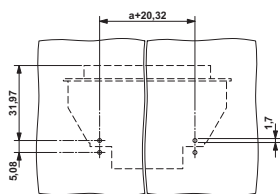
600 / 55 / 20 - 6

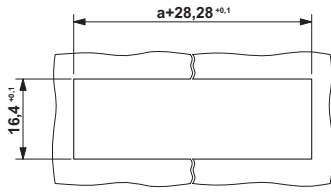
600 / 55 / 20 - 6

on request

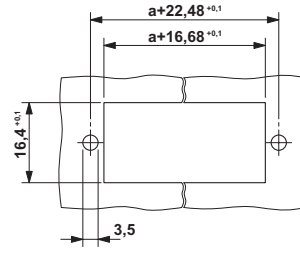
¹⁾ Observe derating curve

²⁾ Only in connection with CRIMPFOX 16 S

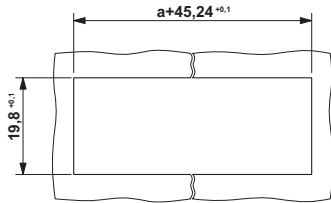




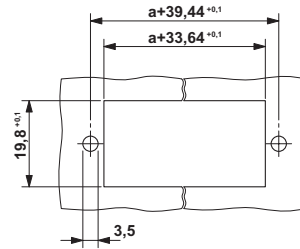
Sheet metal cutout for snap-lock mechanism for "ST" versions



Sheet metal cutout for screw connection for "ST" versions

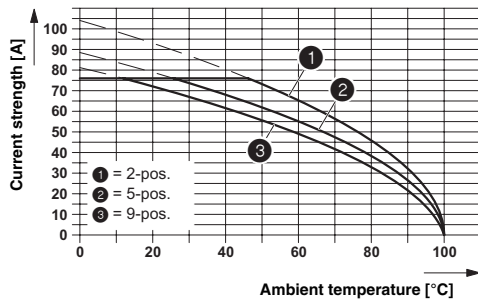


Sheet metal cutout for snap-lock mechanism for "STF" versions



Sheet metal cutout for screw connection for "STF" versions

Derating curve
 Type: IPC 16/...-ST-10,16 with DFK-IPC 16/...-ST-10,16
 Connected conductor cross section = 16 mm²
 Reduction factor = 0.8
 Number of positions = see diagram





Компания «ЭлектроПласт» предлагает заключение долгосрочных отношений при поставках импортных электронных компонентов на взаимовыгодных условиях!

Наши преимущества:

- Оперативные поставки широкого спектра электронных компонентов отечественного и импортного производства напрямую от производителей и с крупнейших мировых складов;
- Поставка более 17-ти миллионов наименований электронных компонентов;
- Поставка сложных, дефицитных, либо снятых с производства позиций;
- Оперативные сроки поставки под заказ (от 5 рабочих дней);
- Экспресс доставка в любую точку России;
- Техническая поддержка проекта, помощь в подборе аналогов, поставка прототипов;
- Система менеджмента качества сертифицирована по Международному стандарту ISO 9001;
- Лицензия ФСБ на осуществление работ с использованием сведений, составляющих государственную тайну;
- Поставка специализированных компонентов (Xilinx, Altera, Analog Devices, Intersil, Interpoint, Microsemi, Aeroflex, Peregrine, Syfer, Eurofarad, Texas Instrument, Miteq, Cobham, E2V, MA-COM, Hittite, Mini-Circuits, General Dynamics и др.);

Помимо этого, одним из направлений компании «ЭлектроПласт» является направление «Источники питания». Мы предлагаем Вам помощь Конструкторского отдела:

- Подбор оптимального решения, техническое обоснование при выборе компонента;
- Подбор аналогов;
- Консультации по применению компонента;
- Поставка образцов и прототипов;
- Техническая поддержка проекта;
- Защита от снятия компонента с производства.



Как с нами связаться

Телефон: 8 (812) 309 58 32 (многоканальный)

Факс: 8 (812) 320-02-42

Электронная почта: org@eplast1.ru

Адрес: 198099, г. Санкт-Петербург, ул. Калинина, дом 2, корпус 4, литера А.