



MOP-TFT480116-38G-BLH-TPC

Hardware Manual

Revision 1.1

Revision History

Revision	Date	Description	Author
1.1	March 29, 2018	Updated Naming Convention	Divino
1.0	February 21, 2018	Initial Release	Divino



Contents

Revision History	1
Contents	2
1 General Information	3
2 Absolute Maximum Ratings.....	3
3 Electrical Characteristics.....	3
4 Backlight Characteristics.....	4
5 Touch Panel Characteristics	4
6 External Dimensions	5
7 Electro-Optical Characteristics	6
8 Interface Description	7
8.1 LCM Interface Description	7
8.2 CTB Interface Description	7
9 AC Characteristics	8
9.1 Pixel Timing.....	8
9.2 Touch Panel Timing	8
10 Power Sequence	9
10.1 Power Up Sequence	9
10.2 Power Down Sequence.....	9
11 Inspection Criterion	10
11.1 Description	10
11.2 Sample plan	10
11.3 Inspection condition	10
11.4 Definition of inspection zone in LCD.....	10
11.5 Function Defect	10
11.6 LCD pixel defect (bad dot) (defect type: MI).....	11
11.7 Dot and line defect (defect type: MI)	11
12 Handling Precautions.....	12
12.1 Mounting method	12
12.2 LCD Handling and Cleaning Precaution	12
12.3 Static Charge Precaution	12
12.4 Packing.....	12
12.5 Precautions during Operation	12
12.6 Storage Recommendations	13
12.7 Safety Precautions	13
13 Ordering	14
13.1 Part Numbering Scheme.....	14
13.2 Options	14
14 Contact	14



1 General Information

No.	Item	Contents	Unit
1	Display Size(Diagonal)	3.8"	
2	LCD type	TN TFT	
3	Display Mode	Transmissive/ Normally White	
4	Resolution	480 RGB x 116	Pixels
5	View Direction	12 O'clock	
6	Gray Scale Inversion Direction	6 O'clock	
7	Module Outline	105.5(H) x 37.8 (V) x 4.2(T)	mm
8	Active Area	95.04(H) x 22.97(V)	mm
9	Pixel Pitch	198(H) x 198(V)	μm
10	Pixel Arrangement	Stripe	
11	Polarizer Surface Treatment	Anti-glare	
12	Display Colors	16M	
13	Interface	24-bit RGB interface	
14	Driver IC	ST7282	-
15	With or Without Touch Panel	With	
16	Operating Temperature	-20~70	°C
17	Storage Temperature	-30~80	°C
18	Weight	35	g

2 Absolute Maximum Ratings

Item	Symbol	Min	Max	Unit
Supply Voltage	VCC	-0.3	4.6	V
Storage temperature	T _{STG}	-30	+80	°C
Operating temperature	T _{OP}	-20	+70	°C

***Note:** If Ta below 50°C, the maximal humidity is 90%RH, if Ta over 50°C, absolute humidity should be less than 60%RH.

****Note:** The response time will be extremely slow when the operating temperature is around -10°C, and the back ground will become darker at high temperature operating.

3 Electrical Characteristics

DC Characteristics (at Ta=25 °C)

Item	Symbol	Min	Typ	Max	Unit	
Digital Interface Supply Voltage	VCC	3.0	3.3	3.6	V	
Logic Low input voltage	V _{IL}	GND	-	0.3*VCC	V	
Logic High input voltage	V _{IH}	0.7*VCC	-	VCC	V	
Logic Low output voltage	V _{OL}	GND	-	GND+0.4	V	
Logic High output voltage	V _{OH}	VCC-0.4	-	VCC	V	
Current Consumption All Black	Logic	I _{CC} +I _{IN}	-	15	30	mA
	Analog					



4 Backlight Characteristics

(at Ta=25 °C, RH=60%)

Item	Symbol	Condition	Min	Typ.	Max.	Unit
Forward Voltage	V _F	Ta=25 °C, I _F =20mA/LED	17.4	19.2	19.8	V
Forward Current	I _F	Ta=25 °C, V _F =3.2V/LED	-	40	-	mA
Power dissipation	P _D		-	768	-	mW
Uniformity	Avg		80	-	-	%
Drive method	Constant current					
LED Configuration	12 White LEDs (6 LEDs in one string and 2 groups in parallel)					

5 Touch Panel Characteristics

(at Ta=25 °C)

Item	Description
IC solution on TP Model	GT911*
Touch Count Max	5 point
Display Resolution	480*116
Interface Type	I2C
Maximum Clock Speed	400Kbps
Interrupt Signal	Active Low
Default Origin	Upper Left Corner
Default I2C Address (Write/Read)	0xBA/0xBB

Parameter	Min.	Typ.	Max.	Unit
Power Voltage (VDD)	2.8	---	3.3	V
Signal Voltage	1.8	3.3	3.6	V
Signal HIGH	0.7*VDD	---	VDD	V
Signal LOW	0	---	0.3*VDD	V
Supply Current (Operation)	---	6.0	---	mA

*Note: For more information, see the GT911 datasheet



6 External Dimensions

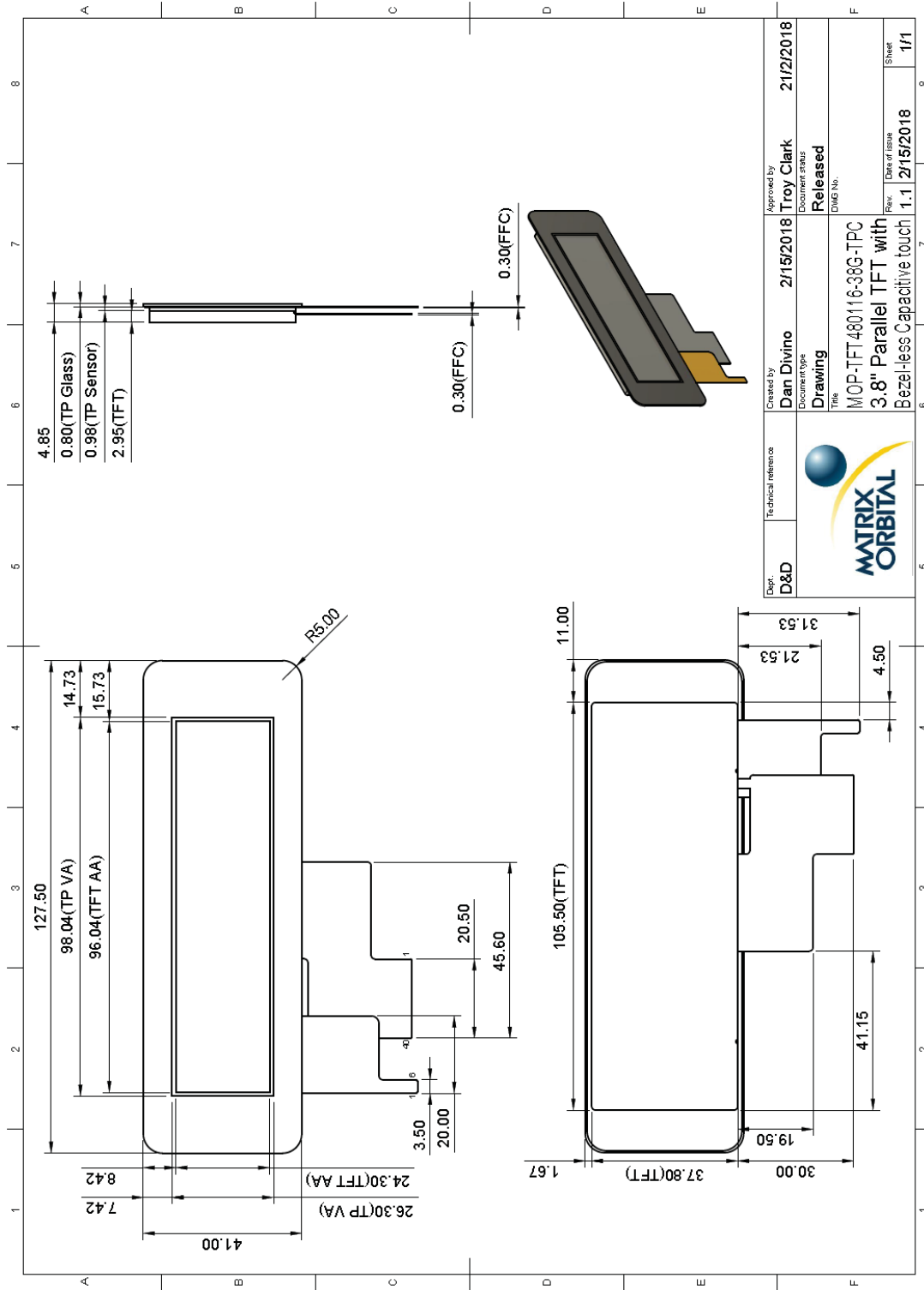


Figure 1: MOP-TFT480116-38G-BLH-TPC Drawing



7 Electro-Optical Characteristics

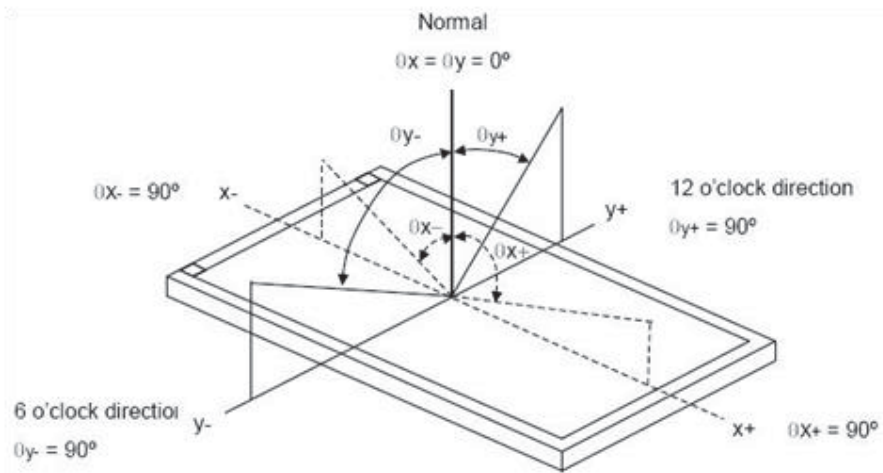


Figure 2: The definition of viewing angle

Item	Symbol	Condition	Specification			Unit
			Min	Typ	Max	
Luminance on TFT ($I_f = 20\text{mA/LED}$)	Lv	Normal viewing angle $\theta_x = \varphi_y = 0^\circ$	640	800	-	cd/m ²
Contrast Ratio	CR		300	500	-	
Response time	$T_R + T_F$		-	30	50	ms
Transmissive	Red	X_R	0.576	0.616	0.676	
		Y_R	0.309	0.359	0.409	
	Green	X_G	0.274	0.324	0.374	
		Y_G	0.558	0.608	0.658	
	Blue	X_B	0.099	0.149	0.199	
		Y_B	0.070	0.120	0.170	
White	X_W	0.237	0.287	0.337		
	Y_W	0.292	0.342	0.392		
	Horizontal	θ_{x+}	-	60	-	Deg.
		θ_{x-}	-	60	-	
	Vertical	φ_{y+}	-	50	-	
		φ_{y-}	-	65	-	
NTSC Ratio(Gamut)			-	50	-	%

8 Interface Description

8.1 LCM Interface Description

Interface No.	Name	Description
1	LEDK	Backlight Cathode
2	LEDA	Backlight Anode
3	GND	Ground
4	VCC	Power source
5-12	Red(0-7)	Red data signal
13-20	Green(0-7)	Green data signal
21-28	Blue(0-7)	Blue data signal
29	GND	Ground
30	CLK	Clock signal to sample each data
31	DISP	Display on/off signal. DISP="H" Display on; DISP="L" Display off
32	HSYNC	Horizontal synchronizing signal
33	VSYNC	Vertical synchronizing signal
34	DEN	Input data enable control
35	NC	No connection
36	GND	Ground
37	XR(NC)	No Connect
38	YD(NC)	No Connect
39	XL(NC)	No Connect
40	YU(NC)	No Connect

8.2 CTB Interface Description

Interface No.	Name	I/O Pin Connections	Description
1	RST*	I	Reset (Active Low)
2	INT*	O	State change interrupt (Active Low)
3	GND	P	Ground
4	SDA**	I/O	Serial interface data
5	SCL**	I	Serial interface clock
6	VDD	P	Power supply of CTP

*Note: Pull up resistors of 10K ohms to VDD are recommended for RST and INT.

**Note: Pull up resistors of 1K-10K ohms to VDD are required for SCL and SDA.



9 AC Characteristics

9.1 Pixel Timing

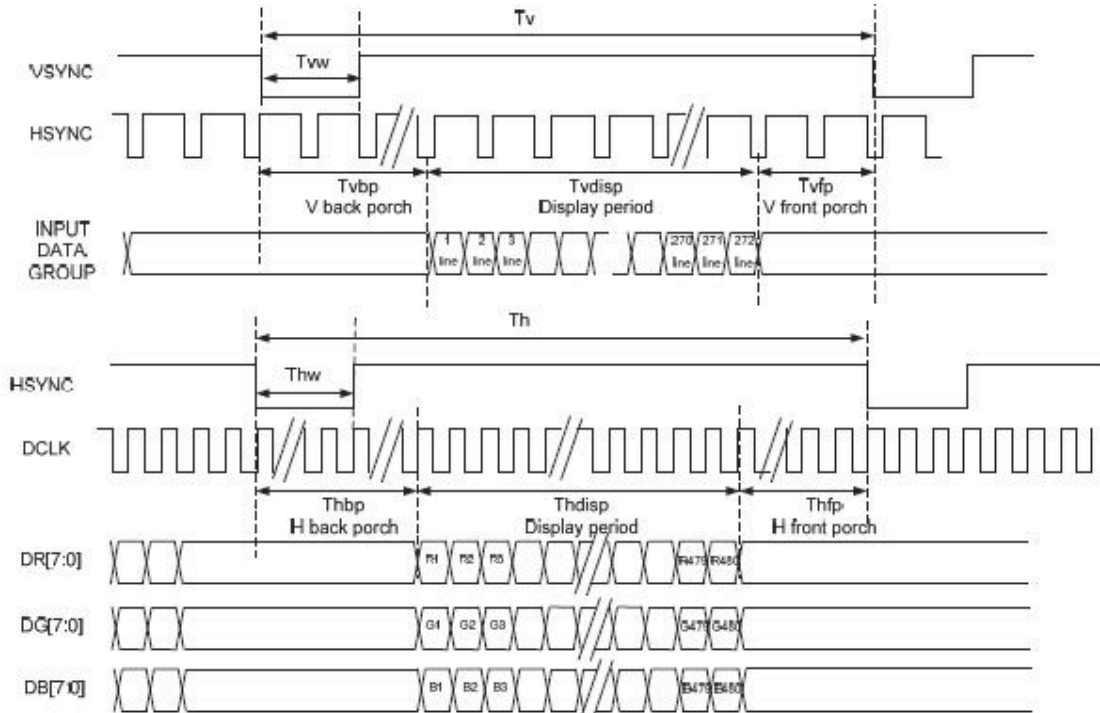


Figure 3: SYNC-DE Mode Timing Diagram

Characteristics		Symbol	Min.	Typ.	Max.	Unit
DOTCLK Frequency		Fclk	-	12	-	MHz
Hsync	Period Time	T_h	-	524	-	DCLK
	Display Period	T_{hdisp}	-	480	-	DCLK
	Back Porch	T_{hbp}	-	43	-	DCLK
	Front Porch	T_{hfp}	-	1	-	DCLK
	Pulse Width	T_{hw}	-	2	-	DCLK
Vsync	Period Time	T_v	-	288	-	H
	Display Period	T_{vdisp}	-	272	-	H
	Back Porch	T_{vbp}	-	12	-	H
	Front Porch	T_{vfp}	-	4	-	H
	Pulse Width	T_{vw}	-	2	-	H

*Note: The 1-156 gate lines must be sent back data

9.2 Touch Panel Timing

Table 1: Write Operation

Start	Address (Write)	ACK	Register (H)*	ACK	Register (L)*	ACK	Data (1)	ACK	...	Data (n)	ACK	End
-------	-----------------	-----	---------------	-----	---------------	-----	----------	-----	-----	----------	-----	-----

Table 2: Read Operation

Start	A (Write)	ACK	R (H)	ACK	R (L)	ACK	End	Start	A (Read)	ACK	D (1)	ACK	...	D (n)	ACK	End
-------	-----------	-----	-------	-----	-------	-----	-----	-------	----------	-----	-------	-----	-----	-------	-----	-----

*Note: For a complete list of registers and additional information, see the GT911 datasheet.



10 Power Sequence

10.1 Power Up Sequence

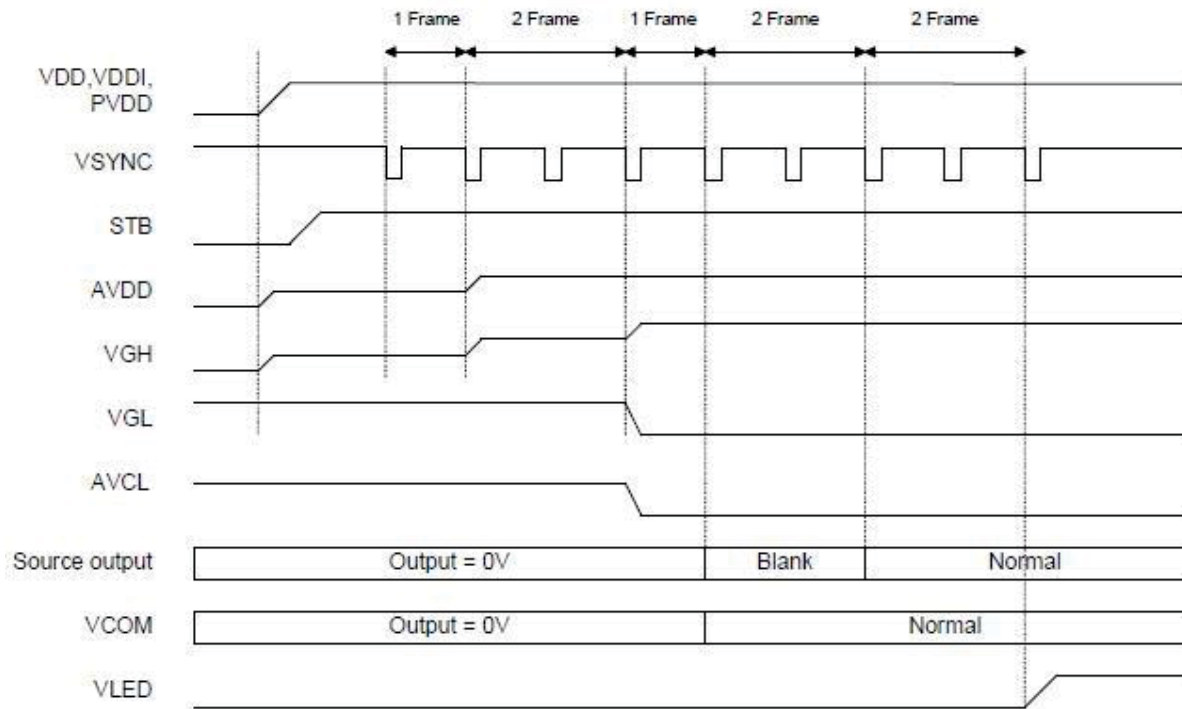


Figure 4: Power Up Sequence

10.2 Power Down Sequence

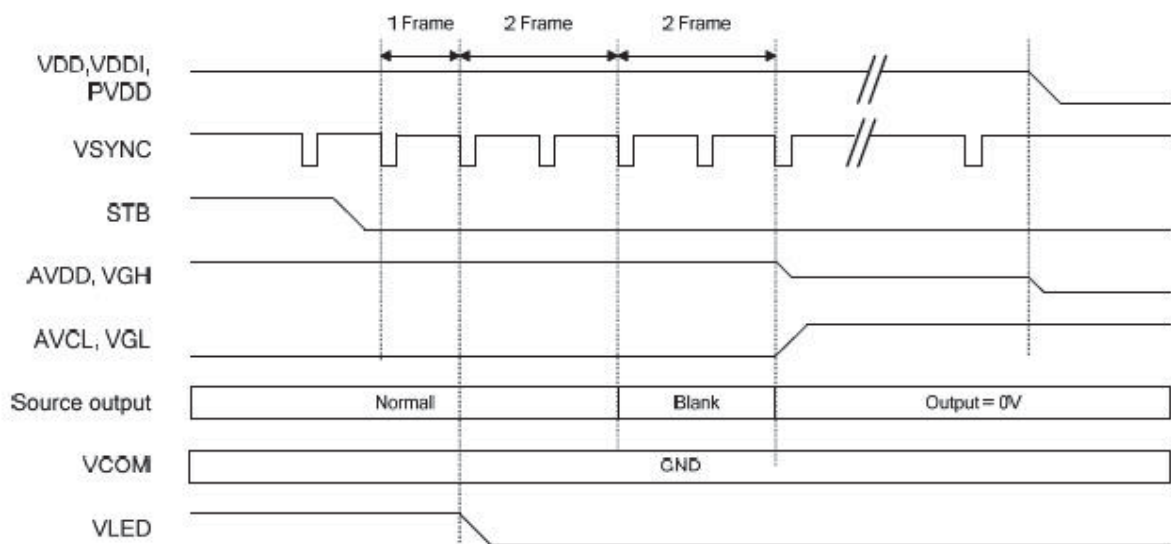


Figure 5: Power Down Sequence



11 Inspection Criterion

11.1 Description

This specification is made to be used as the standard acceptance/rejection criteria for the MOP-TFT480116-38G-BLH-TPC.

11.2 Sample plan

Sampling plan:

1999 and ANSI/ASQC Z1.4-1993

Single sampling, normal inspection

Visual inspection: AQL 1.5%

Electrical functional: AQL 0.65%

11.3 Inspection condition

- Viewing distance for cosmetic inspection is about 30 ± 2 cm with bare eyes, and under a 1000~1500lux environment for visual inspection. All directions for inspecting the sample should be within 45° against perpendicular line. (Normal temperature $18\sim 28^\circ\text{C}$ and normal humidity $60\pm 15\%\text{RH}$).
- During testing, the LCD is driven using the voltage level (Within $\pm 0.5\text{V}$ of the typical value at 25°C .) that provides the most optical contrast

11.4 Definition of inspection zone in LCD

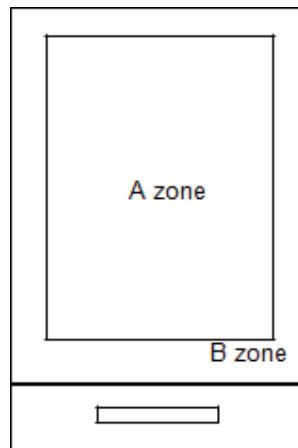


Figure 6: Inspection Zones in an LCD

Zone A: Active Area

Zone B: Viewing Area

11.5 Function Defect

Items to be inspected	Inspection criterion	Classification of defects
All functional defects	1) No display 2) Display abnormally 3) Missing vertical, horizontal segment 4) Short circuit 5) Back-light no lighting, flickering and abnormal lighting. 6) obvious striation 7) Current beyond specification value	MA
Missing	Missing component	
Outline dimension	Overall outline dimension exceed the drawing is not allowed.	

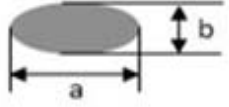
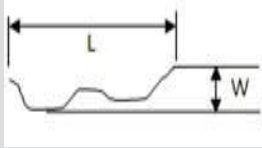
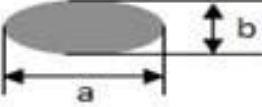


11.6 LCD pixel defect (bad dot) (defect type: MI)

Checking item	Judgment criterion	Total
Bright dot	0	0
Dark dot	$N \leq 2$	$N \leq 2$
Total dot	$N \leq 2$	$N \leq 2$
Mura	Not visible through 5% ND filters	

***Note:** Bright dot caused by scratch and foreign object accords to item 1.

11.7 Dot and line defect (defect type: MI)

Checking item	Judgment criterion			Figure
	Diameter(mm)\LCD Size		S ≤5.0 Inch	
Dot defect	$D \leq 0.10$		Allowed	
	$0.10 < D \leq 0.15$		2	
	$0.15 < D \leq 0.25$		1	
	$0.25 < D$		0	
	Total		2	
	Distance between 2 defects should be more than 3mm apart.			
Line defect	Length(mm)	Width(mm)	Judgment criterion	
	---	$W \leq 0.03$	allowed	
	$L \leq 2.5$	$0.03 < W \leq 0.05$	3	
	$L \leq 2.5$	$0.05 < W \leq 0.10$	2	
	---	$0.1 < W$	0	
	Total		3	
Distance between 2 defects should more than 3mm apart. Scratches not viewable through the back of the display are acceptable				
Concave point and air bubble for polarizer	Size(mm)		Judgment criterion	
	$D \leq 0.20$		allowed	
	$0.20 < D \leq 0.30$		4	
	$0.30 < D \leq 0.50$		1	
	$D > 0.50$		None	
			$D = (a+b)/2$	



12 Handling Precautions

12.1 Mounting method

Do not make extra holes in the display or modify its shape. When mounting the display, ensure that the display does not flex, bend or twist. Extreme care should be used when handling the LCD modules.

12.2 LCD Handling and Cleaning Precaution

To clean the display surface, it is recommended to wipe lightly using a soft cloth with either Isopropyl alcohol or Ethyl alcohol.

Do not wipe the display surface with dry or hard materials as it may damage the polarizer surface.

Do not use Water or Aromatics to clean the display.

Do not wipe ITO pad area with dry or hard materials that will damage the ITO patterns

Do not use Soldering flux, Chlorine(Cl), and Sulfur(S) on the pad or prevent it from being contaminated.

If the display is sent without applying a silicon coat on the pad, the ITO patterns could be damaged due to corrosion as time goes on.

If ITO corrosion occurs due to customer miss-handling, or if the customer applies materials such as Chlorine (Cl), Sulfur (S) to the display, the responsibility is placed the customer.

12.3 Static Charge Precaution

The LCD module uses CMOS LSI drivers, so we recommend that you:

- Connect any unused input terminal to VDD or VSS
- Do not input any signals before power is turned on
- Ground your body, work/assembly areas, and assembly equipment to protect against static electricity.

12.4 Packing

The module employs LCD elements and must be treated as such.

- Avoid intense shock and falls from a height.
- To prevent modules from degradation, do not operate or store them exposed direct to sunshine or high temperature/humidity

12.5 Precautions during Operation

- It is an indispensable condition to drive the LCD module within the specified voltage limits. Applying voltage higher than the limit will reduce the life span of the LCD.
- Using direct drive current should be avoided, as it will induce an electrochemical reaction causing undesirable deterioration.
- The LCD's response time will be delayed when operating at a temperature lower than the suggested operating range. When operating at a temperature higher than the suggested range, the LCD will be noticeably darker. The display will return to normal when it is brought back to the specified operation temperature.
- If the display area is pushed hard during operation, some font may be abnormally drawn but the LCD will return to normal after it is reset.
- Slight dew depositing on terminals can cause an electro-chemical reaction, damaging traces and resulting in an open circuit.

Usage under the maximum operating temperature, 50%Rh or less is required



12.6 Storage Recommendations

When storing the LCD for a prolonged period of time, the following recommendations will help prevent damage or deterioration

- Store the display in an ambient temperature range between 10°C to 30°C, and in a relative humidity of 45% to 75%.
- Do not leave the display exposed to sunlight or fluorescent light.
- Place the display in a polyethylene bag with the opening sealed.
- Ensure that nothing is making contact with the polarizer surface.
- It is recommended to store them in the same packaging that was provided upon purchase

12.7 Safety Precautions

In the case that the LCD glass has shattered, it is recommended to remove any glass pieces, wash off the liquid crystal using either acetone or ethanol, and proceed to burn any remaining display pieces.

If any liquid leaked out of a damaged glass cell, and comes in contact with your hands, please wash it off well with soap and water



13 Ordering

13.1 Part Numbering Scheme

Table 3: Parallel TFT Part Numbering Scheme

MOP	TFT	480	116	38	G	BLH	CTB
1	2	3	4	5	6	7	8

13.2 Options

Table 4: Parallel Part Options

#	Designator	Options
1	Product Line	MOP: Matrix Orbital Parallel Display
2	Screen Type	TFT: Graphic TFT
3	Display Columns	480: Four Hundred Eight Pixel Columns
4	Display Rows	116: One Hundred Sixteen Pixel Rows
5	Display Size	38: 3.8"
6	Display Form Factor	G: G Form Factor
7	Brightness Level	-BLS: Brightness < 300 Nit -BLM: 300 Nit < Brightness < 600 Nit -BLH: 600 Nit < Brightness < 1000 Nit -BLD: Brightness > 1000 Nit
8	Touch Panel Type	TPN: None TPR: Resistive CTB: Bezel-less Capacitive

14 Contact

Sales

Phone: 403.229.2737

Email: sales@matrixorbital.ca

Support

Phone: 403.204.3750

Email: support@matrixorbital.ca

Online

Purchasing: www.matrixorbital.com

Support: www.matrixorbital.ca





Компания «ЭлектроПласт» предлагает заключение долгосрочных отношений при поставках импортных электронных компонентов на взаимовыгодных условиях!

Наши преимущества:

- Оперативные поставки широкого спектра электронных компонентов отечественного и импортного производства напрямую от производителей и с крупнейших мировых складов;
- Поставка более 17-ти миллионов наименований электронных компонентов;
- Поставка сложных, дефицитных, либо снятых с производства позиций;
- Оперативные сроки поставки под заказ (от 5 рабочих дней);
- Экспресс доставка в любую точку России;
- Техническая поддержка проекта, помощь в подборе аналогов, поставка прототипов;
- Система менеджмента качества сертифицирована по Международному стандарту ISO 9001;
- Лицензия ФСБ на осуществление работ с использованием сведений, составляющих государственную тайну;
- Поставка специализированных компонентов (Xilinx, Altera, Analog Devices, Intersil, Interpoint, Microsemi, Aeroflex, Peregrine, Syfer, Eurofarad, Texas Instrument, Miteq, Cobham, E2V, MA-COM, Hittite, Mini-Circuits, General Dynamics и др.);

Помимо этого, одним из направлений компании «ЭлектроПласт» является направление «Источники питания». Мы предлагаем Вам помощь Конструкторского отдела:

- Подбор оптимального решения, техническое обоснование при выборе компонента;
- Подбор аналогов;
- Консультации по применению компонента;
- Поставка образцов и прототипов;
- Техническая поддержка проекта;
- Защита от снятия компонента с производства.



Как с нами связаться

Телефон: 8 (812) 309 58 32 (многоканальный)

Факс: 8 (812) 320-02-42

Электронная почта: org@eplast1.ru

Адрес: 198099, г. Санкт-Петербург, ул. Калинина, дом 2, корпус 4, литера А.