

REFERENCE SPECIFICATIONS

-NFC 93425 (in compliance with HE 507)

PHYSICAL CHARACTERISTICS

-INSULATOR MATERIAL: THERMOPLASTIC ,UL94V0

-CONTACT MATERIAL: BRASS

-ACCESSORIES: BRASS

-SHELLS: STEEL

ELECTRICAL CHARACTERISTICS

-NOMINAL CURRENT: 40A

-CONTACT RESISTANCE: <= 7.3 mOhms

-CONTACT/CONTACT : >=1000 V

-CONTACT/GROUND : >=1200 V

-INSULATION RESISTANCE: >=5000 MOhms

- CLIMATIC CATEGORY: 55/125/21

TEMPERATURE RANGE -55°C TO +125°C

DAMP HEAT STEADY STATE 21 DAYS

SALT SPRAY 24 HOURS

- RETENTION AGAINST TORQUE: - Threaded insert: 0.7 N.m minimum

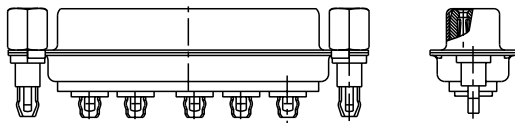
- Female screw : 0.5 N.m minimum

PRESS FIT PERFORMANCES

PRESS FIT CONTACTS	
INSERTION FORCE	<= 200 N Average insertion 160N
EXTRACTION FORCE	>= 30 N

NOTE RoHS INFORMATION

- The "LF" products meet european union Directives and other country regulations as described in GS-22-008.
- Termination plating spec:
 - Ni 1.27µm+Sn 0.5 to 1.5µm(pure bright)
- Active area plating spec:
 - Ni + Gold
- Shell plating : 2 to 4µm Cu + Ni + 3 to 10µm Sn(pure bright)
- Accessories: Sn pure bright + nickel
- Packaging spec: See GS-14-920



5W5 FOR EXAMPLE

DBL5W5S93C5G40LF

Series

Shell size: **E A B C**
see sheet 2

Front accessory definition
see sheet 2

- L** : threaded insert M3
- O** : threaded insert UNC 4-40
- V** : female screw UNC 4-40

Layout of contacts (see sheet 3)

Contacts

S : Socket

Termination type

93 C Straight version

Plating

- 5** 200 matings/unmatings
- 6** 500 matings/unmatings

PCB accessories definition
see sheet 2

G : Harpoon used for PCB thickness from 1.60 mm

Power contacts

40 : Fitted with power contacts 40 Amp.

See note RoHS

TABLE 1: PCB HOLE DIAMETERS

P.C.B HOLE DEFINITION	SnPb holes for CONTACTS		Sn holes for CONTACTS		holes ACCESSORIES
	DRILL DIAMETER	Ø3.22 REF(NOTE 3)	Ø3.22 REF(NOTE 3)	Ø3.19-3.25	
(NOTE 1 AND 2)	COPPER PLATING	25µ MINI (RECOMMENDED 50µ MAXI)	25µ MINI (RECOMMENDED 50µ MAXI)	25µ MINI (RECOMMENDED 50µ MAXI)	Ø3.10±0.10
	TIN-LEAD PLATING	15µ MAXI (RECOMMENDED 5µ MINI)		0.8 to 1,2µ	
	TIN PLATING				
	FINISH HOLE (AFTER REFLOW)	Ø 3.02-3.20	Ø3.08-3.20		

NOTE-1: THESE DIMENSIONS MUST BE RESPECT TO SECURE PRESS-FIT PIN PERFORMANCES.

NOTE-2: ACCORDING TO IEC-352-5 SPEC.

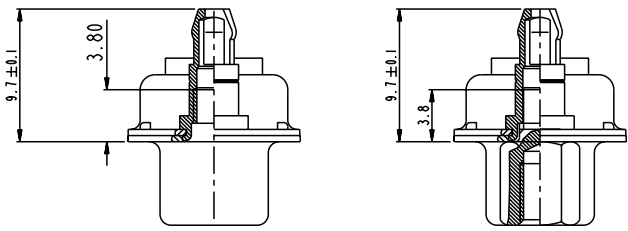
NOTE-3: MAJOR REQUIREMENT FOR PRESS FIT PIN PERFORMANCE

www.fciconnect.com		surface	tolerance std	projection	mm
		ISO 1302	ISO 406 ISO 1101	mm	
		TOLERANCES UNLESS OTHERWISE SPECIFIED		size	Scale
		ANGULAR	0.X ±0.3	A2	2:1
		LINEAR	0.XX ±0.1	ECN	LS07-0273
		Ø ±2°	0.XXX ±0.05	Spec ref	
		Product family			
FCI		SUB FEMALE DW		Rev.	
		full power straight press fit		C01-8639-2318	
		catalog no		C	
				sheet 1 of 4	

rev	ccn no	dr	date
B	LS06-0208	LGO	2006/12/13
C	LS07-0273	MPE	2007/11/05
-	-	-	-
-	-	-	-
-	-	-	-
-	-	-	-

Dr	M PESSON	11/10/05
Eng	P LEGARE	
Chr		
Appr		

Copyright FCI



FRONT ACCESSORIES	L insert M3	V insert UNC 4.40
	O insert UNC 4.40	
PCB ACCESSORY	G Harpoon for PCB from 1.60mm	G Harpoon for PCB from 1.60mm

PART NUMBER	AMPS	MATINGS/ UNMATINGS	FRONT ACCESSORIES	PCB ACCESSORY
D*LxWxS93C5G40LF	40	200	insert M3	harpoon PCB from 1.60mm
D*OxWxS93C5G40LF	40	200	insert UNC 4.40	harpoon PCB from 1.60mm
D*VxWxS93C5G40LF	40	200	female screw UNC 4.40	harpoon PCB from 1.60mm

shell size	LAYOUTS
#	xWx
E	2V2
A	3V3
A	3W3
B	5W5
C	8W8

PART NUMBER	AMPS	MATINGS/ UNMATINGS	FRONT ACCESSORY	PCB ACCESSORIES
D*LxWxS93C6G40LF	40	500	insert M3	harpoon PCB from 1.60mm
D*OxWxS93C6G40LF	40	500	insert UNC 4.40	harpoon PCB from 1.60mm
D*VxWxS93C6G40LF	40	500	female screw UNC 4.40	harpoon PCB from 1.60mm

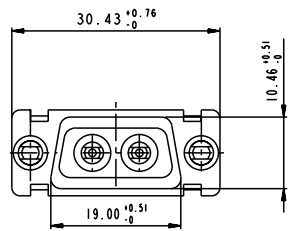
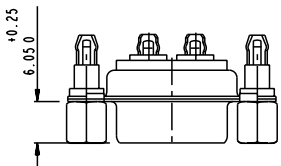
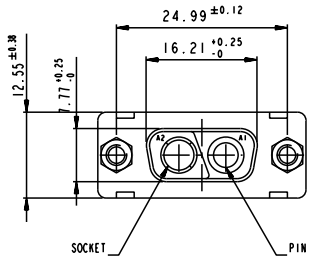
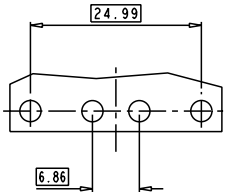
Copyright FCJ.

www.fciconnect.com		surface ISO 1302	-	tolerance std AS 406 ISO 1101	projection mm
		TOLERANCES UNLESS OTHERWISE SPECIFIED			
Dr	M PESSON	11/10/05	ANGULAR	0.X ±0.3	size A2 Scale 2:1
Eng	11/10/05	P LEGARE	LINEAR	0.XX ±0.1	ECN LS07-0273
Chr			0° ±2°	0.XXX ±0.05	
Appr			Product family		Spec ref
FCJ		SUB FEMALE DW		cat no	Rev.
		full power straight press fit		C01-8639-2318	C
		catalog no		Y	sheet 2 of 4

SCALE: 4

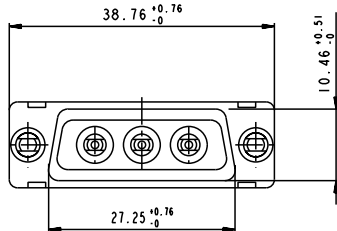
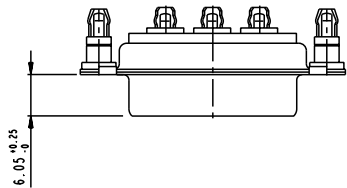
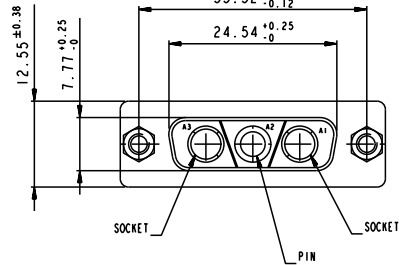
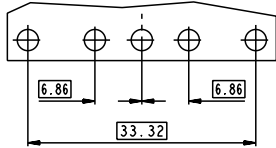
2V2

LAYOUT AND CONNECTOR DIMENSIONS
For PCB hole diameters see Table I sheet 1



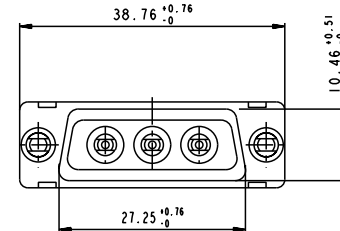
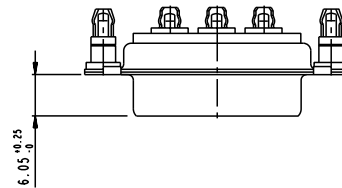
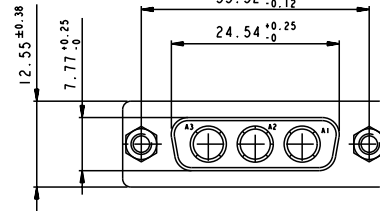
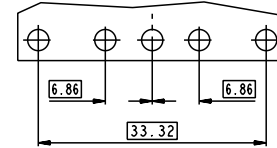
3V3

LAYOUT AND CONNECTOR DIMENSIONS
For PCB hole diameters see Table I sheet 1

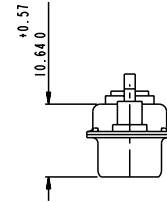


3W3

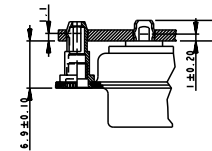
LAYOUT AND CONNECTOR DIMENSIONS
For PCB hole diameters see Table I sheet 1



SIDE VIEW FOR
LAYOUTS: E A B C



DETAIL OF PRESS FIT



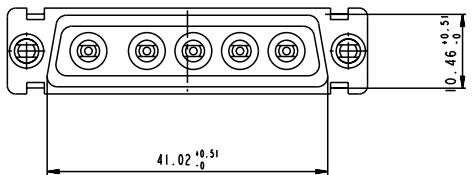
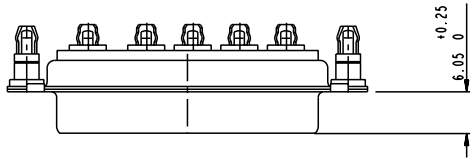
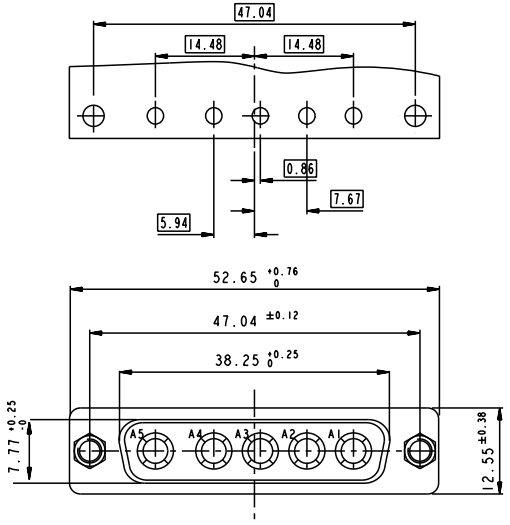
Copyright FCJ

www.fciconnect.com		surface -	tolerance std ISO 1302	ISO 406	ISO 1101	projection	mm
			TOLERANCES UNLESS OTHERWISE SPECIFIED				
Dr M PESSON	11/10/05	ANGULAR	0.X	±0.3	size	A2	Scale 2:1
Eng 11/10/05	P LEGARE	LINEAR	0.XX	±0.1	ECN	LS07-0273	
Chr		0° ±2°	0.XXX	±0.05	Product family	-	Spec ref
Appr							
FCJ		SUB FEMALE DW		full power straight press fit		cat no	C01-8639-2318
						Rev.	C
						sheet 3 of 4	

5W5

LAYOUT AND CONNECTOR DIMENSIONS

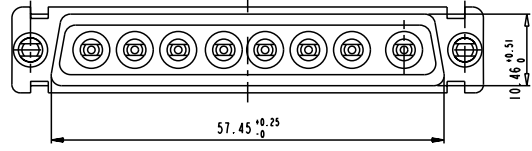
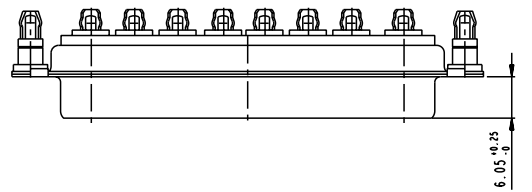
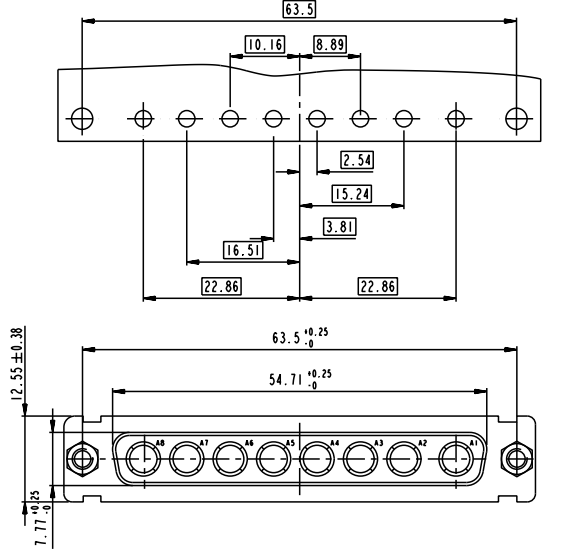
For PCB hole diameters see table 1 sheet 1



8W8

LAYOUT AND CONNECTOR DIMENSIONS

For PCB hole diameters see table 1 sheet 1



Copyright FCI

www.fciconnect.com		surface ISO 1302	tolerance std ISO 406 ISO 1101	projection mm
		TOLERANCES UNLESS OTHERWISE SPECIFIED		
Dr M PESSON	11/10/05	ANGULAR	0.X ±0.3	size A2 Scale 2:1
Eng 11/10/05	P LEGARE	LINEAR	0.XX ±0.1	ECN LS07-0273
Chr		0° ±2°	0.XXX ±0.05	Spec ref
Product family				
FCI SUB FEMALE DW full power straight press fit		cat no	C01-8639-2318	Rev. C
catalog no		Y	sheet 4 of 4	



Компания «ЭлектроПласт» предлагает заключение долгосрочных отношений при поставках импортных электронных компонентов на взаимовыгодных условиях!

Наши преимущества:

- Оперативные поставки широкого спектра электронных компонентов отечественного и импортного производства напрямую от производителей и с крупнейших мировых складов;
- Поставка более 17-ти миллионов наименований электронных компонентов;
- Поставка сложных, дефицитных, либо снятых с производства позиций;
- Оперативные сроки поставки под заказ (от 5 рабочих дней);
- Экспресс доставка в любую точку России;
- Техническая поддержка проекта, помощь в подборе аналогов, поставка прототипов;
- Система менеджмента качества сертифицирована по Международному стандарту ISO 9001;
- Лицензия ФСБ на осуществление работ с использованием сведений, составляющих государственную тайну;
- Поставка специализированных компонентов (Xilinx, Altera, Analog Devices, Intersil, Interpoint, Microsemi, Aeroflex, Peregrine, Syfer, Eurofarad, Texas Instrument, Miteq, Cobham, E2V, MA-COM, Hittite, Mini-Circuits, General Dynamics и др.);

Помимо этого, одним из направлений компании «ЭлектроПласт» является направление «Источники питания». Мы предлагаем Вам помощь Конструкторского отдела:

- Подбор оптимального решения, техническое обоснование при выборе компонента;
- Подбор аналогов;
- Консультации по применению компонента;
- Поставка образцов и прототипов;
- Техническая поддержка проекта;
- Защита от снятия компонента с производства.



Как с нами связаться

Телефон: 8 (812) 309 58 32 (многоканальный)

Факс: 8 (812) 320-02-42

Электронная почта: org@eplast1.ru

Адрес: 198099, г. Санкт-Петербург, ул. Калинина, дом 2, корпус 4, литера А.