

## General Description

The MAX77801 evaluation kit demonstrates the IC 2A, buck-boost with I<sup>2</sup>C capability. The EV kit enables user to evaluate MAX77801 performances with preprogrammed output voltage even without I<sup>2</sup>C interface board (e.g., MINIQUSB). The two output voltages supported by default are 3.3V and 3.4V and it can be set by pulling DVS high/low. With I<sup>2</sup>C interface board (additional order required if necessary), user can set output voltage from 2.6V to 4.1875V with 12.5mV step. The EV kit comes standard with the MAX77801EWP+ installed.

The MINIQUSB interface board can be used to enable PC communication through the USB interface board. Windows® 2000-, Windows XP®, Windows Vista®, and Windows 7-compatible software along with an extender board allows an IBM-compatible PC to use the USB port to emulate an I<sup>2</sup>C 2-wire interface. This menu-driven program offers a graphical user interface (GUI) with control buttons.

## Benefits and Features

- Kelvin Sense Pins at the Input and Output of the Regulator Ensure Accurate Efficiency Measurement

**Ordering Information** appears at end of data sheet.

*Windows, Windows XP, and Windows Vista are registered trademarks and service marks of Microsoft Corporation.*

## Quick Start

### Required Equipment

- MAX77801 EV kit
- MINIQUSB command module (optional, USB cable included)
- Adjustable DC power supply
- 1.8V DC power supply (optional)
- Digital multimeters

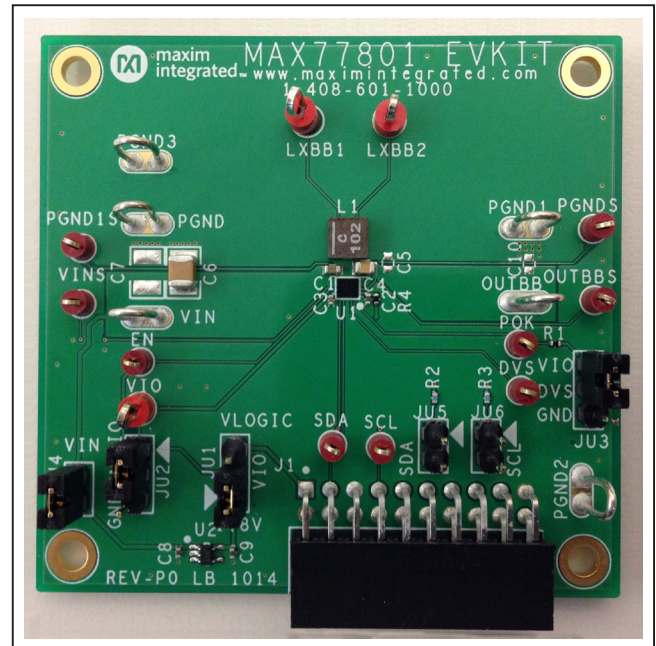


Figure 1. MAX77801 Evaluation Board

**Procedure**

The EV kit is fully assembled and tested. Follow the steps below to verify board operation. Use twisted wires of appropriate gauge (20AWG) that are as short as possible to connect the load and power sources.

- 1) Ensure that the EV kit has the correct jumper settings, as shown in [Table 1](#).
- 2) Connect the MINIQUSB interface board (if I<sup>2</sup>C control is required to test).
- 3) Preset the DC power supply to 3.8V. Turn off the power supply. Do not turn on the power supply until all connections are completed.
- 4) Connect the EV kit to the power supply and meters. Adjust the ammeters to their largest current range to minimize their series impedance. Do not allow the ammeters to operate in their autorange mode. If current readings are not desired, short across the ammeters.
- 5) Turn on the power supply.
- 6) Switch JU2 to VIO (1-2) to enable the MAX77801.
- 7) Apply load for desired test. If reading register (e.g., reading status register) or writing register (e.g., programming specific output voltage) is required, then proceed to step 8.
- 8) Visit [www.maximintegrated.com/evkitssoftware](http://www.maximintegrated.com/evkitssoftware) to download the latest version of the EV kit software, MAX77801Rxx.ZIP. Save the EV kit software to a temporary folder and uncompress the ZIP file.
- 9) Install the EV kit software on your computer by running the INSTALL.EXE program inside the temporary folder. The program files are copied and icons are created in the Windows **Start | Programs** menu.
- 10) Connect the USB cable from the PC to the MINIQUSB board.
- 11) Start the EV kit software by opening its icon in the **Start | Programs** menu. The EV kit software main window appears, as shown in [Figure 2](#).
- 12) The EV kit is now ready for testing.

### Detailed Description of Software

The GUI shown in [Figure 2](#) is the main window of the MAX77801 EV kit software that provides a convenient means to control the MAX77801 IC. Use the mouse or press the Tab key to navigate through the GUI controls.

The EV kit software main window consists of two tabs, **CHIPID/STATUS/CONFIG** ([Figure 2](#)) and **VOUT\_DVS**

([Figure 3](#)). The **CHIPID/STATUS/CONFIG** tab sheet provides group boxes, checkboxes, and pushbuttons of the CHIP ID read, STATUS of alarm, CONFIG1, and CONFIG2. **VOUT\_DVS** tab sheet provides access to control OUTPUT voltage depending on DVS pin status. Refer to register description in the MAX77801 data sheet.

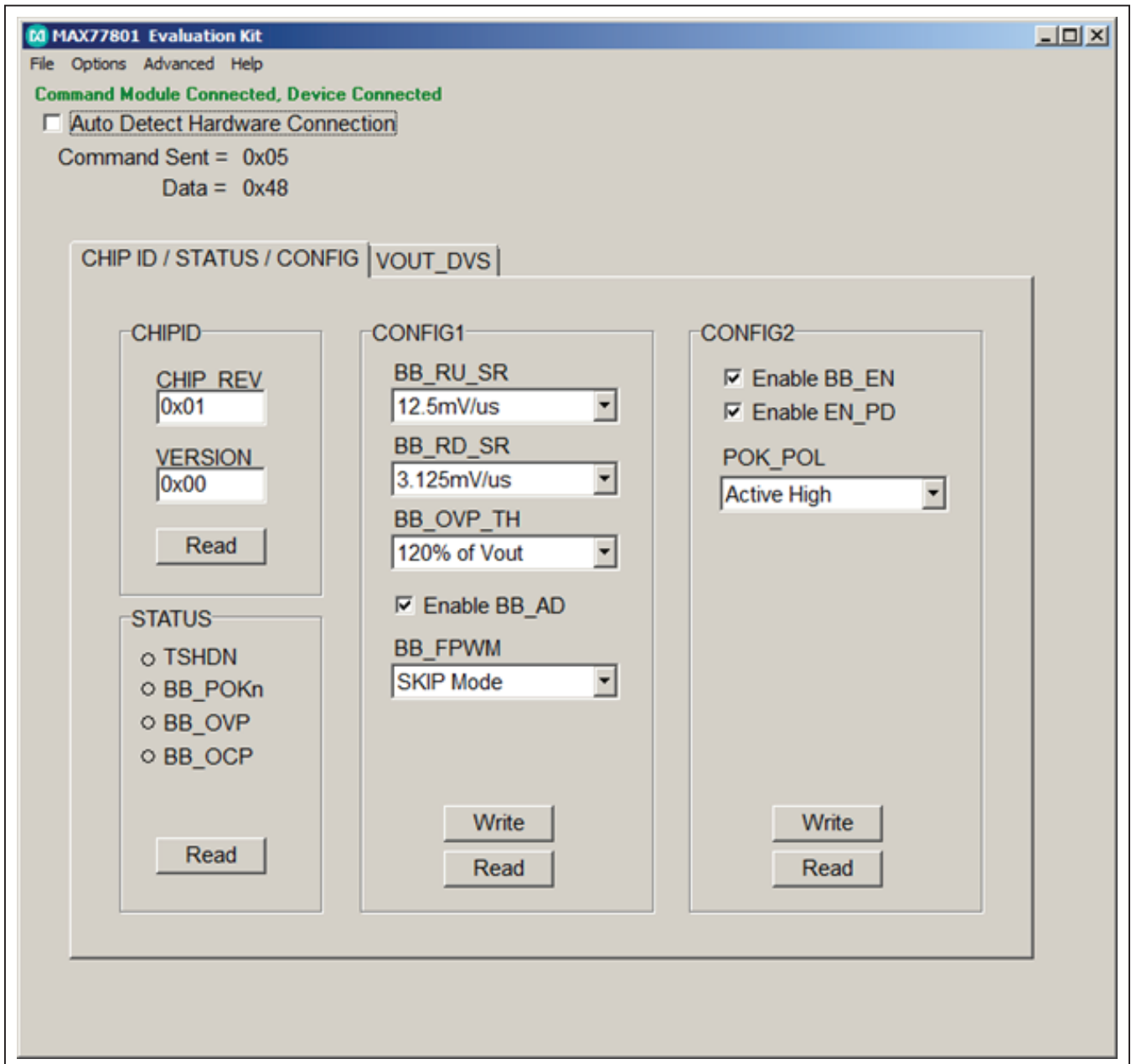


Figure 2. MAX77801 Evaluation Kit Software Window (CHIPID/STATUS/CONFIG Tab)

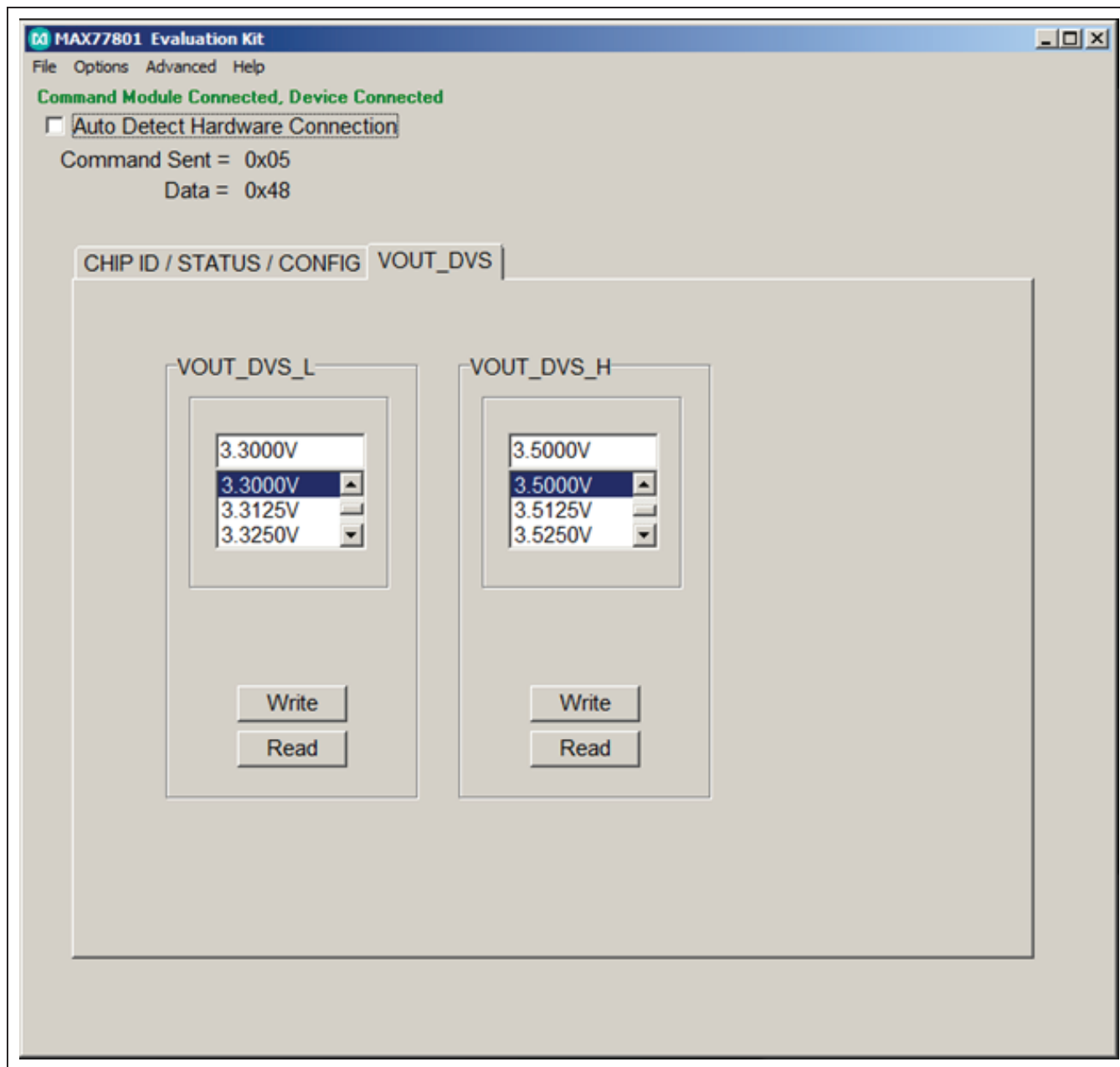


Figure 3. MAX77801 Evaluation Kit Software Window (VOUT\_DVS Tab)

### Detailed Description of Hardware

The MAX77801 EV kit demonstrates the MAX77801 buck-boost. It regulates output from input voltage ranges from 2.3V to 5.5V. Programmable output range is from 2.6V to 4.1875V with 12.5mV step. The EV kit is suited

with a general DC input. By connecting an external MINIQUSB, and launching the EV kit software, the user can adjust output voltage can be reported the status of buck-boost on the EV kit GUI. [Table 1](#) lists jumpers and associated functions that are available on the EV kit.

**Table 1. Jumper Functions**

JUMPER	NODE OR FUNCTION	SHUNT POSITION	FUNCTION
JU1	VIO	1-2*	VIO is supplied from an onboard 1.8V LDO(U1)
		2-3	VIO is supplied from MINIQUSB board
JU2	EN	1-2	Connecting EN to VIO (MAX77801 is enabled)
		2-3*	Connecting EN to GND (MAX77801 is disabled)
JU3	DVS	1-2	Connecting DVS to VIO, output voltage is set by VOUT_DVS_H register
		2-3*	Connecting DVS to GND, output voltage is set by VOUT_DVS_L register
JU4	Input for onboard LDO	OPEN	Disconnect onboard LDO input
		1-2*	Inboard LDO is supplied from VIN
JU5	SDA pullup	OPEN*	No pullup for SDA
		1-2	SDA pin is pulled up to VIO through 2.2kΩ
JU6	SCL pullup	OPEN*	No pullup for SCL
		1-2	SCL pin is pulled up to VIO through 2.2kΩ

\*Default position.

## Component List

PART	QTY	DESCRIPTION
C1	1	10 $\mu$ F $\pm$ 5%, 6.3V X5R ceramic capacitor (0603) TDK CGB3C1X5R0J106M065AC
C2, C8, C9	3	1 $\mu$ F $\pm$ 10%, 6.3V X5R ceramic capacitors (0402) Murata GRM155R60J105KE19
C3	1	0.1 $\mu$ F $\pm$ 10%, 10V X5R ceramic capacitor (0402) Taiyo-Yuden LMK105BJ104KV-F
C4	1	47 $\mu$ F $\pm$ 20%, 6.3V X5R ceramic capacitor (0805) TDK C2012X5R0J476M125AC
C5, C7, C10	0	Capacitors, not installed
C6	0	100 $\mu$ F capacitor, not installed
J1	1	20-pin, right-angle connector Sullins PPTC102LJBN-RC

PART	QTY	DESCRIPTION
JU1, JU2, JU3	3	3-pin straight connectors Samtec TSW-103-07-L-S
JU4, JU5, JU6	3	2-pin straight connectors Samtec TSW-102-07-T-S
L1	1	1 $\mu$ H $\pm$ 20% inductor, I <sub>SAT</sub> = 8.7A, DCR = 13.25m $\Omega$ Coilcraft XAL4020-102ME
R1	1	100k $\Omega$ $\pm$ 1% resistor (0402)
R2, R3	2	2.2k $\Omega$ $\pm$ 1% resistors (0402)
R4	1	0 $\Omega$ resistor (0402)
U1	1	Buck-boost (20 WLP) Maxim MAX77801EWP+
U2	1	Voltage regulator (5 SC70) Maxim MAX8511EXK18+
—	1	PCB: MAX77801EVKIT

## Component Suppliers

SUPPLIER	PHONE	WEBSITE
TDK	847-803-6100	<a href="http://www.comopnent.tdk.com">www.comopnent.tdk.com</a>
Murata	770-436-1300	<a href="http://www.murata-northamerica.com">www.murata-northamerica.com</a>
Taiyo-Yuden	603-669-7587	<a href="http://www.t-yuden.com">www.t-yuden.com</a>
Sullins	760-774-0125	<a href="http://www.sullinselectronics.com">www.sullinselectronics.com</a>
Samtec	800-726-8329	<a href="http://www.samtec.com">www.samtec.com</a>
Coilcraft	847-639-6400	<a href="http://www.coilcraft.com">www.coilcraft.com</a>

**Note:** Indicate that you are using the MAX77801 when contacting these component suppliers.

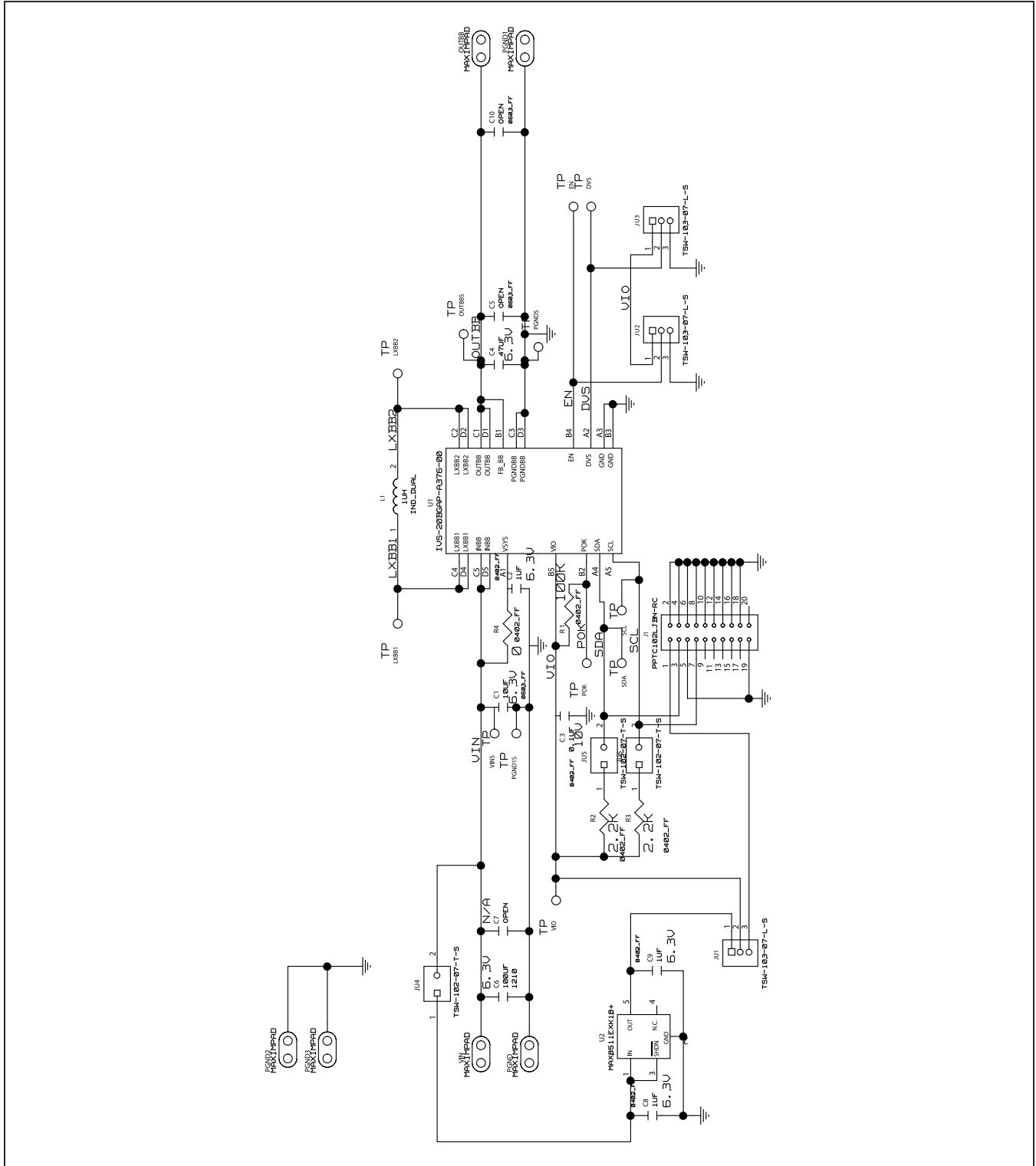


Figure 4. MAX77801 EV Kit Schematic

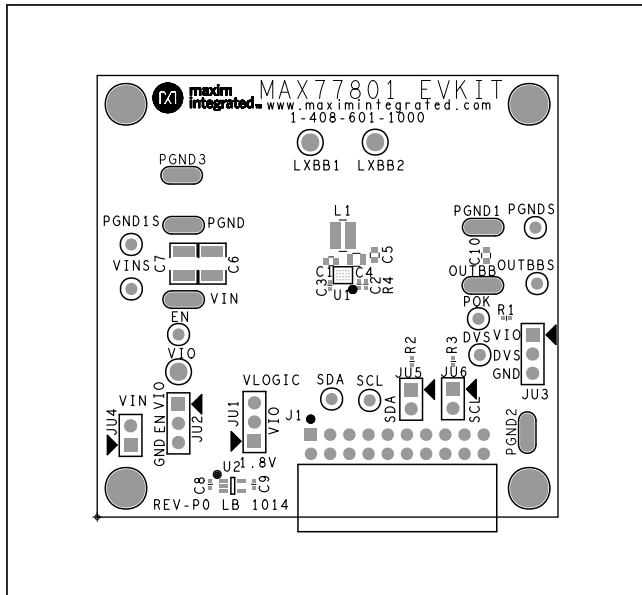


Figure 5. MAX77801 EV Kit Component Placement Guide—Top Side

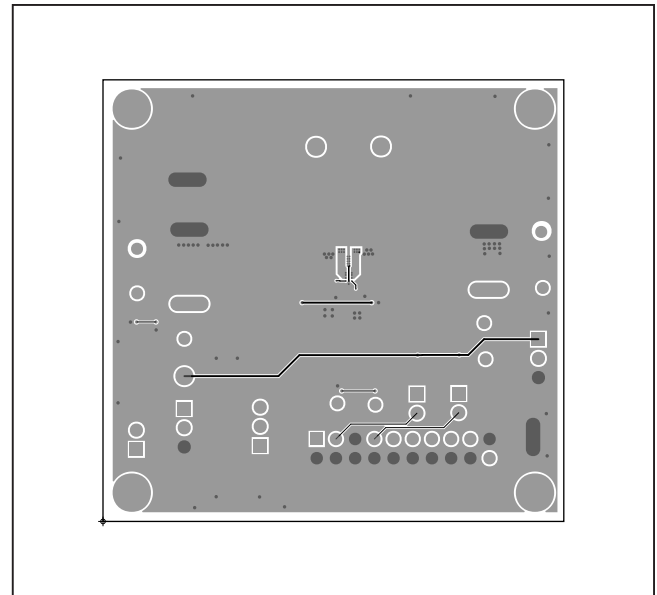


Figure 6. MAX77801 EV Kit PCB Layout—Top Side

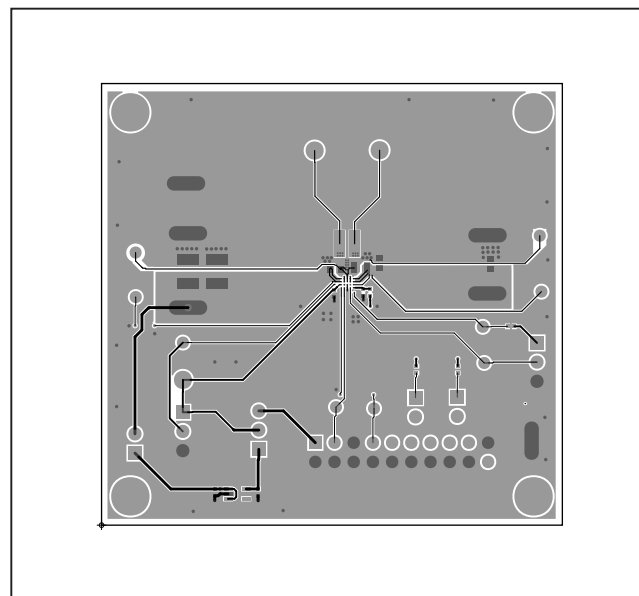


Figure 7. MAX77801 EV Kit PCB Layout—Bottom Side



### Ordering Information

PART	TYPE
MAX77801EVKIT#	EV kit
MINIUSB+	Command module

#Denotes RoHS compliant.

+Denotes a lead(Pb)-free/RoHS-compliant package.

## Revision History

REVISION NUMBER	REVISION DATE	DESCRIPTION	PAGES CHANGED
0	2/15	Initial release	—

For pricing, delivery, and ordering information, please contact Maxim Direct at 1-888-629-4642, or visit Maxim Integrated's website at [www.maximintegrated.com](http://www.maximintegrated.com).

*Maxim Integrated cannot assume responsibility for use of any circuitry other than circuitry entirely embodied in a Maxim Integrated product. No circuit patent licenses are implied. Maxim Integrated reserves the right to change the circuitry and specifications without notice at any time.*



Компания «ЭлектроПласт» предлагает заключение долгосрочных отношений при поставках импортных электронных компонентов на взаимовыгодных условиях!

Наши преимущества:

- Оперативные поставки широкого спектра электронных компонентов отечественного и импортного производства напрямую от производителей и с крупнейших мировых складов;
- Поставка более 17-ти миллионов наименований электронных компонентов;
- Поставка сложных, дефицитных, либо снятых с производства позиций;
- Оперативные сроки поставки под заказ (от 5 рабочих дней);
- Экспресс доставка в любую точку России;
- Техническая поддержка проекта, помощь в подборе аналогов, поставка прототипов;
- Система менеджмента качества сертифицирована по Международному стандарту ISO 9001;
- Лицензия ФСБ на осуществление работ с использованием сведений, составляющих государственную тайну;
- Поставка специализированных компонентов (Xilinx, Altera, Analog Devices, Intersil, Interpoint, Microsemi, Aeroflex, Peregrine, Syfer, Eurofarad, Texas Instrument, Miteq, Cobham, E2V, MA-COM, Hittite, Mini-Circuits, General Dynamics и др.);

Помимо этого, одним из направлений компании «ЭлектроПласт» является направление «Источники питания». Мы предлагаем Вам помощь Конструкторского отдела:

- Подбор оптимального решения, техническое обоснование при выборе компонента;
- Подбор аналогов;
- Консультации по применению компонента;
- Поставка образцов и прототипов;
- Техническая поддержка проекта;
- Защита от снятия компонента с производства.



#### Как с нами связаться

**Телефон:** 8 (812) 309 58 32 (многоканальный)

**Факс:** 8 (812) 320-02-42

**Электронная почта:** [org@eplast1.ru](mailto:org@eplast1.ru)

**Адрес:** 198099, г. Санкт-Петербург, ул. Калинина, дом 2, корпус 4, литера А.