

STAMPED AND FORMED CONTACTS, PG 1 of 2

Click on [blue underlined part numbers](#) to be taken to their spec sheets.

OPTIONS

PART NUMBER: [AT62-14-01XX](#)
DESCRIPTION: CONTACT, SOCKET, STAMPED, SIZE 16

MATERIAL:
 CONTACT BODY: COPPER ALLOY
 HOOD: STAINLESS STEEL
PLATING SUFFIX CODE:
 XX=22 NICKEL PLATING
 XX=44 GOLD PLATING
CONTACT GENERAL DATA SPECIFICATION: S2-15217
AVAILABLE CRIMPERS: ATT-16-00, MFX-3950 & MFX-3953
CRIMPER SPECIFICATIONS: S2-15223 & S2-15224
CRIMP INFORMATION DRAWING: S2-15221 & S2-15222
CONTACTS PER REEL: APPROX. 4000 (PARTIAL REELS AVAILABLE)



PART NUMBER: [AT62-16-01XX](#)
DESCRIPTION: CONTACT, SOCKET, STAMPED, SIZE 16

MATERIAL:
 CONTACT BODY: COPPER ALLOY
 HOOD: STAINLESS STEEL
PLATING SUFFIX CODE:
 XX=22 NICKEL PLATING
 XX=44 GOLD PLATING
CONTACT GENERAL DATA SPECIFICATION: S2-15217
AVAILABLE CRIMPERS: ATT-16-00, ATT-16-01, MFX-3950 & MFX-3953
CRIMPER SPECIFICATIONS: S2-15223 & S2-15224
CRIMP INFORMATION DRAWING: S2-15221 & S2-15222
CONTACTS PER REEL: APPROX. 4000 (PARTIAL REELS AVAILABLE)



PART NUMBER: [AT62-16-06XX](#)
DESCRIPTION: CONTACT, SOCKET, STAMPED, SIZE 16

MATERIAL:
 CONTACT BODY: COPPER ALLOY
 HOOD: STAINLESS STEEL
PLATING SUFFIX CODE:
 XX=22 NICKEL PLATING
 XX=44 GOLD PLATING
CONTACT GENERAL DATA SPECIFICATION: S2-15217
AVAILABLE CRIMPERS: ATT-16-01, MFX-3950 & MFX-3953
CRIMPER SPECIFICATIONS: S2-15223 & S2-15224
CRIMP INFORMATION DRAWING: S2-15221 & S2-15222
CONTACTS PER REEL: APPROX. 4000 (PARTIAL REELS AVAILABLE)



PART NUMBER: [AT60-14-01XX](#)
DESCRIPTION: CONTACT, PIN, STAMPED, SIZE 16

MATERIAL: COPPER ALLOY
PLATING SUFFIX CODE:
 XX=22 NICKEL PLATING
 XX=44 GOLD PLATING
CONTACT GENERAL DATA SPECIFICATION: S2-15217
AVAILABLE CRIMPERS: ATT-16-00, MFX-3950 & MFX-3953
CRIMPER SPECIFICATIONS: S2-15223 & S2-15224
CRIMP INFORMATION DRAWING: S2-15221 & S2-15222
CONTACTS PER REEL: APPROX. 4000 (PARTIAL REELS AVAILABLE)

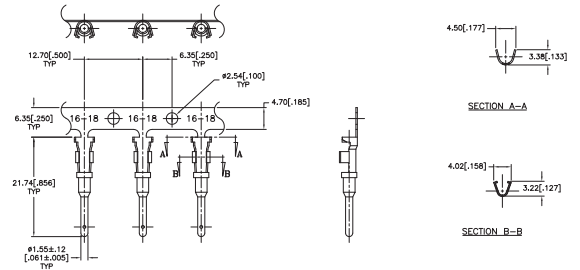


STAMPED AND FORMED CONTACTS, PG 2 of 2

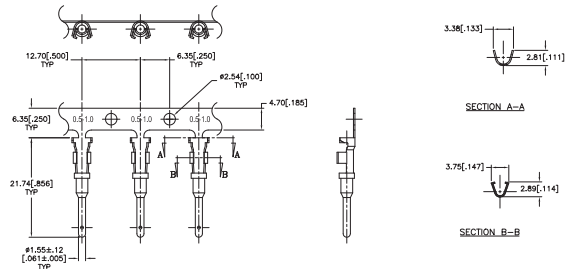
Click on [blue underlined part numbers](#) to be taken to their spec sheets.

OPTIONS

PART NUMBER: [AT60-16-01XX](#)
DESCRIPTION: CONTACT, PIN, STAMPED, SIZE 16
MATERIAL: COPPER ALLOY
PLATING SUFFIX CODE:
 XX=22 NICKEL PLATING
 XX=44 GOLD PLATING
CONTACT GENERAL DATA SPECIFICATION: S2-15217
AVAILABLE CRIMPERS: ATT-16-00, ATT-16-01, MFX-3950 & MFX-3953
CRIMPER SPECIFICATIONS: S2-15223 & S2-15224
CRIMP INFORMATION DRAWING: S2-15221 & S2-15222
CONTACTS PER REEL: APPROX. 4000 (PARTIAL REELS AVAILABLE)



PART NUMBER: [AT60-16-06XX](#)
DESCRIPTION: CONTACT, PIN, STAMPED, SIZE 16
MATERIAL: COPPER ALLOY
PLATING SUFFIX CODE:
 XX=22 NICKEL PLATING
 XX=44 GOLD PLATING
CONTACT GENERAL DATA SPECIFICATION: S2-15217
AVAILABLE CRIMPERS: ATT-16-01, MFX-3950 & MFX-3953
CRIMPER SPECIFICATIONS: S2-15223 & S2-15224
CRIMP INFORMATION DRAWING: S2-15221 & S2-15222
CONTACTS PER REEL: APPROX. 4000 (PARTIAL REELS AVAILABLE)



SOLID/MACHINED CONTACTS

Click on [blue underlined part numbers](#) to be taken to their spec sheets.

OPTIONS

MILITARY-STYLE

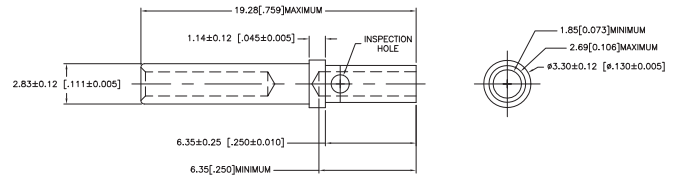
PART NUMBER: [AT60-202-16XX](#)
DESCRIPTION: CONTACT, PIN, SOLID MACHINED, SIZE 16
MATERIAL: COPPER ALLOY
PLATING SUFFIX CODE:
 XX=141 NICKEL PLATING
 XX=31 GOLD PLATING
CONTACT GENERAL DATA SPECIFICATION: S2-15217
AVAILABLE CRIMPERS: CA-5D12 & CA-5E12
CRIMPER SPECIFICATIONS: S2-15219 & S2-15220
CRIMP INFORMATION DRAWING: S2-15218



PART NUMBER: [AT62-201-16XX](#)
DESCRIPTION: CONTACT, SOCKET, SOLID MACHINED, SIZE 16
MATERIAL:
 CONTACT BODY: COPPER ALLOY
 HOOD: STAINLESS STEEL
PLATING SUFFIX CODE:
 XX=141 NICKEL PLATING
 XX=31 GOLD PLATING
CONTACT GENERAL DATA SPECIFICATION: S2-15217
AVAILABLE CRIMPERS: CA-5D12 & CA-5E12
CRIMPER SPECIFICATIONS: S2-15219 & S2-15220
CRIMP INFORMATION DRAWING: S2-15218



PART NUMBER: [65-54942-14](#)
DESCRIPTION: CONTACT, SOCKET, ROCKSOLID, SIZE 16
AWG RANGE: 14AWG
MATERIAL: COPPER ALLOY
PLATING: GOLD
CONTACT GENERAL DATA SPECIFICATION: S2-15217
AVAILABLE CRIMPERS: CA-5D12 & CA-5E12
CRIMPER SPECIFICATIONS: S2-15219 & S2-15220
CRIMP INFORMATION DRAWING: S2-15218

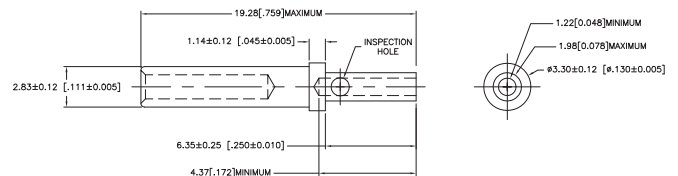


ROCKSOLID™ CONTACTS

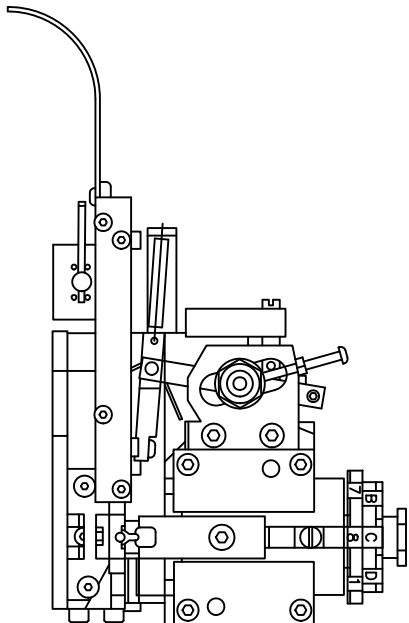
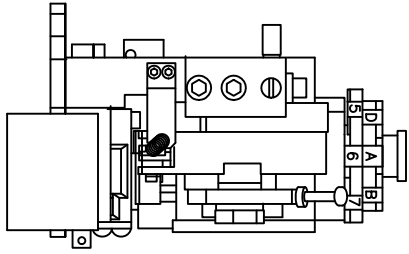
PART NUMBER: [65-54942-16](#)
DESCRIPTION: CONTACT, SOCKET, ROCKSOLID, SIZE 16
AWG RANGE: 16AWG
MATERIAL: COPPER ALLOY
PLATING: GOLD
CONTACT GENERAL DATA SPECIFICATION: S2-15217
AVAILABLE CRIMPERS: CA-5D12 & CA-5E12
CRIMPER SPECIFICATIONS: S2-15219 & S2-15220
CRIMP INFORMATION DRAWING: S2-15218



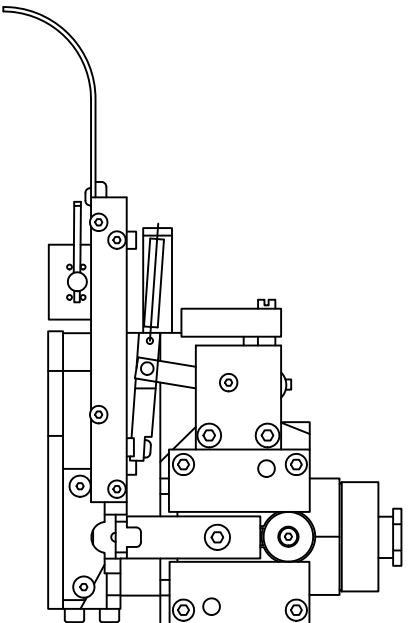
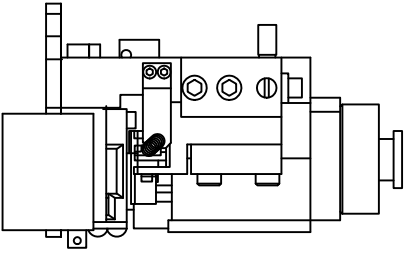
PART NUMBER: [65-54942-20](#)
DESCRIPTION: CONTACT, SOCKET, ROCKSOLID, SIZE 16
AWG RANGE: 20AWG
MATERIAL: COPPER ALLOY
PLATING: GOLD
CONTACT GENERAL DATA SPECIFICATION: S2-15217
AVAILABLE CRIMPERS: CA-5D12 & CA-5E12
CRIMPER SPECIFICATIONS: S2-15219 & S2-15220
CRIMP INFORMATION DRAWING: S2-15218



| REVOLUTIONS | | DESCRIPTION | DATE | BY | APPR |
|-------------|------|-------------|----------------|---------|--------|
| REV | ZONE | ECO | RELEASE NUMBER | M.F.R. | M.F.R. |
| A1 | - | - | 016571 | 6/12/08 | B.D.B. |



| | |
|---------------------|-------------------------------|
| SINE PART NUMBER | MFX-3950 |
| DEUTSCH PART NUMBER | DCT16-02-00 |
| TYCO PART NUMBER | 1-3-1385344-1, 2, 3, 4, 5 & 7 |



| | |
|---------------------|---------------|
| SINE PART NUMBER | MFX-3953 |
| DEUTSCH PART NUMBER | DCT1620-02-00 |

ALL REFERENCES TO DEUTSCH PRODUCTS OR SPECIFICATIONS ARE FOR COMPARISON PURPOSES ONLY, AND REFER TO DEUTSCH INDUSTRIAL PRODUCTS.
 ALL REFERENCES TO TYCO PRODUCTS OR SPECIFICATIONS ARE FOR COMPARISON PURPOSES ONLY, AND REFER TO TYCO ELECTRONICS.

| QUANTITY | PART NUMBER | DESCRIPTION | ITEM | | | | | | | | | | | | | | | | | | | | | | | | | | | | | | | | | | | | | | | | |
|---|--|-------------|------|-------------------------|--|--------------------------|-------------|----------------------------|---------------------|---------|---------------|----------------------------------|------------------|--------|--|------------------|---------------|--------|--|------------------|------------------|--|--|-------------------------------|------------------|--------|--|---------------|------------------|--------|--|-------------|-----------|--|--|-----------------------------|--|--|--|--------|--|--|--|
| <table border="1"> <tr> <th colspan="4">MATERIALS LIST</th> </tr> <tr> <td>UNLESS OTHERWISE SPECIFIED</td> <td>SIGNATURES</td> <td>DATE</td> <td></td> </tr> <tr> <td>1) All dimensions are in inches.</td> <td>DESIGNER: BERNIW</td> <td>6/9/09</td> <td></td> </tr> <tr> <td>2) Pt. DEC 30.00</td> <td>CHECKER: TONE</td> <td>6/9/09</td> <td></td> </tr> <tr> <td>3) Pt. DEC 30.00</td> <td>ENGINEER: BERNIW</td> <td></td> <td></td> </tr> <tr> <td>4) Fabrication Standards Per:</td> <td>APPROVAL: BERNIW</td> <td>6/9/09</td> <td></td> </tr> <tr> <td>5) 1/2" Thick</td> <td>APPROVAL: BERNIW</td> <td>6/9/09</td> <td></td> </tr> <tr> <td>6) SS-20020</td> <td>CUSTOMER:</td> <td></td> <td></td> </tr> <tr> <td>7) Material Specifications:</td> <td></td> <td></td> <td></td> </tr> <tr> <td>8) N/A</td> <td></td> <td></td> <td></td> </tr> </table> | | | | MATERIALS LIST | | | | UNLESS OTHERWISE SPECIFIED | SIGNATURES | DATE | | 1) All dimensions are in inches. | DESIGNER: BERNIW | 6/9/09 | | 2) Pt. DEC 30.00 | CHECKER: TONE | 6/9/09 | | 3) Pt. DEC 30.00 | ENGINEER: BERNIW | | | 4) Fabrication Standards Per: | APPROVAL: BERNIW | 6/9/09 | | 5) 1/2" Thick | APPROVAL: BERNIW | 6/9/09 | | 6) SS-20020 | CUSTOMER: | | | 7) Material Specifications: | | | | 8) N/A | | | |
| MATERIALS LIST | | | | | | | | | | | | | | | | | | | | | | | | | | | | | | | | | | | | | | | | | | | |
| UNLESS OTHERWISE SPECIFIED | SIGNATURES | DATE | | | | | | | | | | | | | | | | | | | | | | | | | | | | | | | | | | | | | | | | | |
| 1) All dimensions are in inches. | DESIGNER: BERNIW | 6/9/09 | | | | | | | | | | | | | | | | | | | | | | | | | | | | | | | | | | | | | | | | | |
| 2) Pt. DEC 30.00 | CHECKER: TONE | 6/9/09 | | | | | | | | | | | | | | | | | | | | | | | | | | | | | | | | | | | | | | | | | |
| 3) Pt. DEC 30.00 | ENGINEER: BERNIW | | | | | | | | | | | | | | | | | | | | | | | | | | | | | | | | | | | | | | | | | | |
| 4) Fabrication Standards Per: | APPROVAL: BERNIW | 6/9/09 | | | | | | | | | | | | | | | | | | | | | | | | | | | | | | | | | | | | | | | | | |
| 5) 1/2" Thick | APPROVAL: BERNIW | 6/9/09 | | | | | | | | | | | | | | | | | | | | | | | | | | | | | | | | | | | | | | | | | |
| 6) SS-20020 | CUSTOMER: | | | | | | | | | | | | | | | | | | | | | | | | | | | | | | | | | | | | | | | | | | |
| 7) Material Specifications: | | | | | | | | | | | | | | | | | | | | | | | | | | | | | | | | | | | | | | | | | | | |
| 8) N/A | | | | | | | | | | | | | | | | | | | | | | | | | | | | | | | | | | | | | | | | | | | |
| <table border="1"> <tr> <td>PROCESS SPECIFICATIONS:</td> <td>THE USE OF THIS DRAWING IS LIMITED TO THE SPECIFICATIONS, AND PERFORMANCE PRESENTED HEREON. ALL DIMENSIONS ARE SUBJECT TO NORMAL MANUFACTURING VARIATIONS. DOCUMENTS REFERENCED HEREON MAY CONTAIN UNRECORDED REVISION DATA.</td> </tr> <tr> <td>SIZE: 1/2" x 1/2" x 1/2"</td> <td>SCALE: NONE</td> </tr> <tr> <td>CRIMPERS INFORMATION</td> <td>MFX-3950 & MFX-3953</td> </tr> <tr> <td>REV: A1</td> <td>SHEET: 1 OF 1</td> </tr> </table> | | | | PROCESS SPECIFICATIONS: | THE USE OF THIS DRAWING IS LIMITED TO THE SPECIFICATIONS, AND PERFORMANCE PRESENTED HEREON. ALL DIMENSIONS ARE SUBJECT TO NORMAL MANUFACTURING VARIATIONS. DOCUMENTS REFERENCED HEREON MAY CONTAIN UNRECORDED REVISION DATA. | SIZE: 1/2" x 1/2" x 1/2" | SCALE: NONE | CRIMPERS INFORMATION | MFX-3950 & MFX-3953 | REV: A1 | SHEET: 1 OF 1 | | | | | | | | | | | | | | | | | | | | | | | | | | | | | | | | |
| PROCESS SPECIFICATIONS: | THE USE OF THIS DRAWING IS LIMITED TO THE SPECIFICATIONS, AND PERFORMANCE PRESENTED HEREON. ALL DIMENSIONS ARE SUBJECT TO NORMAL MANUFACTURING VARIATIONS. DOCUMENTS REFERENCED HEREON MAY CONTAIN UNRECORDED REVISION DATA. | | | | | | | | | | | | | | | | | | | | | | | | | | | | | | | | | | | | | | | | | | |
| SIZE: 1/2" x 1/2" x 1/2" | SCALE: NONE | | | | | | | | | | | | | | | | | | | | | | | | | | | | | | | | | | | | | | | | | | |
| CRIMPERS INFORMATION | MFX-3950 & MFX-3953 | | | | | | | | | | | | | | | | | | | | | | | | | | | | | | | | | | | | | | | | | | |
| REV: A1 | SHEET: 1 OF 1 | | | | | | | | | | | | | | | | | | | | | | | | | | | | | | | | | | | | | | | | | | |

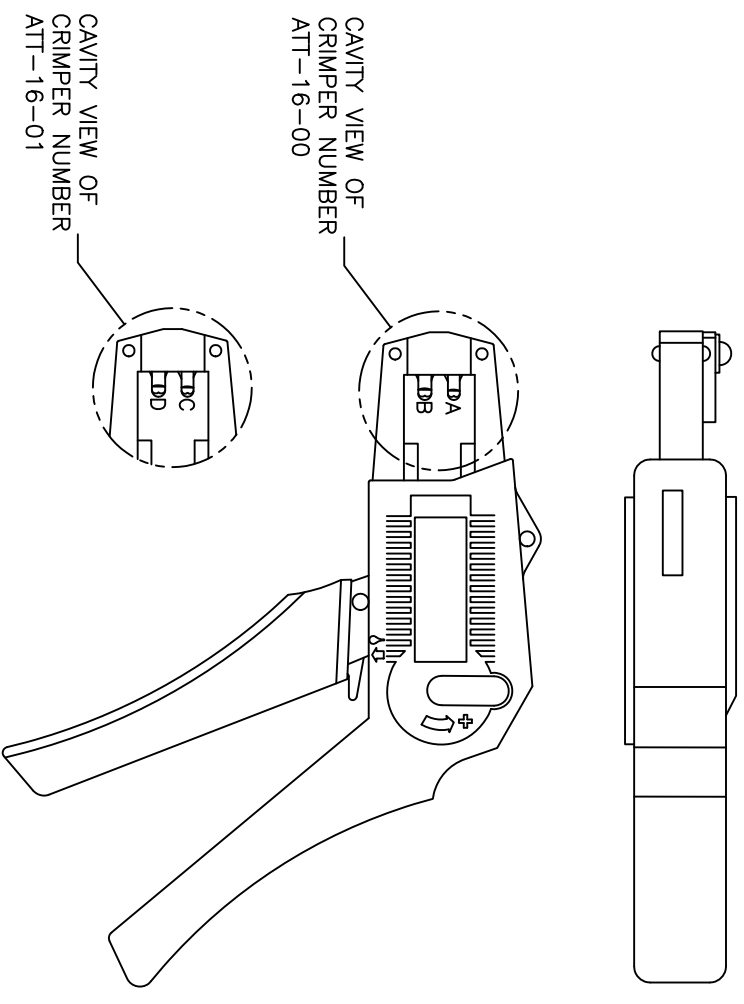
| REVISIONS | | | | | |
|-----------|-----|-----------------------|---------|--------|--------|
| REV | ECO | DESCRIPTION | DATE | BY | APPR |
| A1 | - | RELEASE NUMBER 016571 | 6/12/09 | B.D.B. | M.R.F. |

USE CRIMPER NUMBER:
ATT-16-00 WITH CAVITY A & B

| CONTACT P/N: | INSULATION ϕ | CAVITY | WIRE SIZE |
|--------------|-------------------|--------|--------------------|
| AT60-16-01** | .075 - .140 | B | 1.5mm ² |
| AT62-16-01** | [1.91 - 3.56] | A | 16AWG |
| | | A | 1.0mm ² |
| AT60-14-01** | .095 - .150 | B | 14AWG |
| AT62-14-01** | [2.41 - 3.81] | B | 2.0mm ² |
| | | B | 1.5mm ² |
| | | A | 1.5mm ² |
| | | A | 16AWG |
| | | A | 1.0mm ² |
| AT60-16-06** | .055 - .100 | A | 16AWG |
| AT62-16-06** | [1.40 - 2.54] | A | 1.0mm ² |

USE CRIMPER NUMBER:
ATT-16-01 WITH CAVITY C & D

| CONTACT P/N: | INSULATION ϕ | CAVITY | WIRE SIZE |
|--------------|-------------------|--------|--------------------|
| AT60-16-01** | .075 - .140 | D | 18AWG |
| AT62-16-01** | [1.91 - 3.56] | D | .75mm ² |
| AT60-16-06** | .055 - .100 | D | 18AWG |
| AT62-16-06** | [1.40 - 2.54] | D | .75mm ² |
| | | C | .50mm ² |



CAVITY VIEW OF
CRIMPER NUMBER
ATT-16-00

CAVITY VIEW OF
CRIMPER NUMBER
ATT-16-01

ALL REFERENCES TO DEUTSCH PRODUCTS OR SPECIFICATIONS ARE FOR COMPARISON PURPOSES ONLY, AND REFER TO DEUTSCH INDUSTRIAL PRODUCTS.

- NOTES (UNLESS OTHERWISE SPECIFIED):
- ALL DIMENSIONS IN INCHES [MILLIMETERS]
 - FOR PLATING CODES ** SEE CONTACT DATA DRAWINGS.
 - THIS TOOL IS FOR CRIMPING SIZE 16 CONTACTS ONLY TO WIRES LISTED IN THE CHARTS.
 - DEUTSCH IPD CROSS REFERENCE PART NUMBERS ARE DTT-16-00 AND DTT-16-01.

| QUANTITY | PART NUMBER | DESCRIPTION | ITEM |
|--|-------------|-------------|--------------|
| MATERIALS LIST | | | |
| SINE Systems Corporation A Subsidiary of Amphenol Corporation 44724 Morley Drive Clifton Township, NJ 08036 | | | |
| INSTRUCTIONS: ATT-16-00 & 01 CRIMPER, HAND, STAMPED CONTACTS | | | |
| SIZE | FSC# | NO/DWG NO: | REVISION |
| B | 16K44 | S2-15223 | A1 |
| SCALE | NONE | S2-15223 | SHEET 1 OF 1 |

| SIGNATURES | DATE |
|------------------|--------|
| DESIGNED: BERNUW | 6/8/09 |
| CHECKED: FORCE | 6/8/09 |
| ENGINEER: BERNUW | |
| APPROVAL: BERNUW | 6/8/09 |

| UNLESS OTHERWISE SPECIFIED | UNLESS OTHERWISE SPECIFIED |
|----------------------------------|----------------------------------|
| 1) All dimensions are in inches. | 1) All dimensions are in inches. |
| 2) Tolerances are as follows: | 2) Tolerances are as follows: |
| 3) Fin. DEC 3000 | 3) Fin. DEC 3000 |
| 4) Hole Reference = A | 4) Hole Reference = A |

| PROCESS SPECIFICATIONS | PROCESS SPECIFICATIONS |
|------------------------|------------------------|
| N/A | N/A |

| THE USE OF THIS DOCUMENT IS UNLIMITED. DESIGN FEATURES, SPECIFIC DATA SHOWN, METHOD AND THE MANUFACTURING VARIATIONS DOCUMENTS REFERENCED HEREON MAY VARY WITHOUT NOTICE. |
|---|
| THE USE OF THIS DOCUMENT IS UNLIMITED. DESIGN FEATURES, SPECIFIC DATA SHOWN, METHOD AND THE MANUFACTURING VARIATIONS DOCUMENTS REFERENCED HEREON MAY VARY WITHOUT NOTICE. |

| REV: A1 | DWG NO: S2-15223 | INSTRUCIONS, CRIMPER, HAND |
|---------|------------------|----------------------------|
| REV: A1 | DWG NO: S2-15223 | INSTRUCIONS, CRIMPER, HAND |

| REVISIONS | | | | | | |
|-----------|------|-----|-----------------------|---------|--------|--------|
| REV | ZONE | ECO | DESCRIPTION | DATE | BY | APP |
| A1 | - | - | RELEASE NUMBER 016871 | 6/12/09 | B.D.B. | M.F.F. |

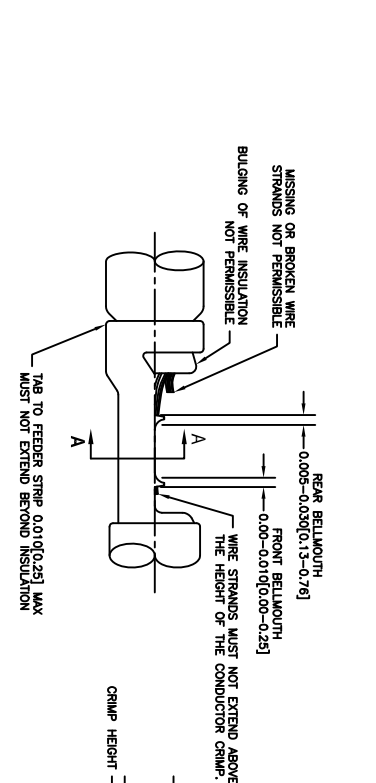
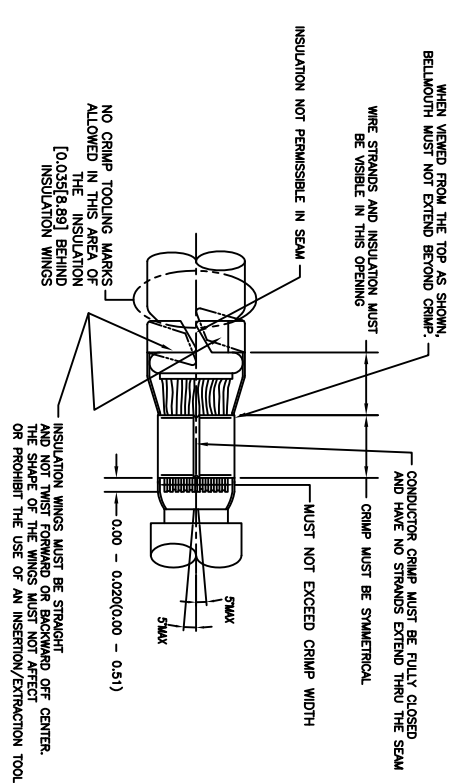
| STAMPED CONTACT PART NUMBER 1068=PIN 1068=SOCKET | SIZE | CONDUCTOR WIRE SIZE | CRIMP HEIGHT | CRIMP WIDTH | CONDUCTOR PUNCH NUMBER | CONDUCTOR ANVIL NUMBER | CRIMP TENSILE REFERENCE |
|---|------|--|--|---------------------------|------------------------|------------------------|-------------------------|
| A780-14-011x A782-14-011x INSULATION RANGE 0.095-0.150(2.41-3.81) | 16 | 14 AWG 2.00mm ² 1.50mm ² 16 AWG 1.00mm ² 18 AWG 0.75mm ² | 0.055(1.40) 0.055(1.40) 0.055(1.39) 0.050(1.27) 0.049(1.24) 0.048(1.22) | ±0.003 INCH [±0.08 mm] | AT17-002-0200 | AT17-101-0200 | 28(111) |
| A780-16-011x A782-16-011x INSULATION RANGE 0.075-0.140(1.91-3.56) | 16 | 14 AWG 2.00mm ² 1.50mm ² 16 AWG 1.00mm ² 18 AWG 0.75mm ² | 0.055(1.40) 0.055(1.40) 0.051(1.35) 0.050(1.27) 0.049(1.24) 0.048(1.22) | ±0.003 INCH [±0.08 mm] | AT17-002-0200 | AT17-101-0200 | 28(111) |
| A780-16-066x A782-16-066x INSULATION RANGE 0.055-0.100(1.40-2.54) | 16 | 16 AWG 1.00mm ² 18 AWG 0.75mm ² 20 AWG 0.50mm ² | 0.050(1.27) 0.050(1.27) 0.049(1.24) 0.048(1.22) 0.045(1.14) | ±0.003 INCH [±0.08 mm] | AT17-003-0200 | AT17-103-0200 | 28(111) 15(67) |

CROSS REFERENCE

| SINE PART NUMBER | DEUTSCH PART NUMBER |
|------------------|---------------------|
| MX-3950 | DC116-02-00 |
| AT17-002-0200 | 1017-002-0200 |
| AT17-003-0200 | 1017-003-0200 |
| AT17-101-0200 | 1017-101-0200 |
| AT17-103-0200 | 1017-103-0200 |
| AT17-210-0200 | 1017-210-0200 |
| AT17-211-0200 | 1017-211-0200 |
| AT17-213-0200 | 1017-213-0200 |
| AT17-214-0200 | 1017-214-0200 |
| AT17-217-0200 | 1017-217-0200 |
| AT17-218-0200 | 1017-218-0200 |
| AT17-310-0200 | 1017-310-0200 |
| AT17-311-0200 | 1017-311-0200 |
| AT17-313-0200 | 1017-313-0200 |
| AT17-304-0200 | 1017-304-0200 |
| AT17-317-0200 | 1017-317-0200 |

NOTES: UNLESS OTHERWISE SPECIFIED

1. ALL DIMENSIONS ARE IN INCHES(mm).
2. FORCES ARE IN POUNDS(LBS) AND NEWTONS(N).
3. "X"= PLATING SUFFIX. SEE INDIVIDUAL CONTACT DRAWING.
4. WIRE STRIP LENGTH: 0.175±0.029(4.45±0.74). BROKEN OR MISSING CONDUCTOR STRANDS ARE NOT ACCEPTABLE.
5. USE A BLADE MICROMETER (0.100(2.54) MIN SPACING AND 0.060(0.010(1.50)(0.040) ANVIL) TO MEASURE THE CONDUCTOR CRIMP. SEE SECTION AA.
6. CRIMP TENSILE STRENGTH IS DETERMINED AT A PULL RATE SPEED OF 1.00 INCH(25.4) PER MINUTE. INSULATION WINGS ARE REMOVED FOR TEST. ACTUAL CRIMP TENSILE STRENGTH DEPENDS ON WIRE/CONDUCTOR SIZE. VALUES ON THIS SPECIFICATION ARE FOR REFERENCE ONLY.
7. INSULATION DIAMETER RANGE IS DETERMINED BY CONNECTOR AND ITS WIRE SEAL SIZE. SEE CONNECTOR DRAWING FOR INSULATION RANGE.
8. INSULATION CRIMP DIAMETER SHOULD BE THE EQUAL OR LESS THAN THE DIAMETER OF THE WIRE INSULATION (HARD OR TEFION INSULATION MAY BE AN EXCEPTION). INSULATION CRIMP SHALL NOT AFFECT REMOVAL TOOL PERFORMANCE AND SHALL NOT DAMAGE CONNECTOR GROMMET SEAL.
9. CONDUCTOR TYPE ARE PER SAE J1128(AWG) AND ISO 6722(METRIC)
10. FOR CONTACT MATERIAL AND PERFORMANCE DATA, SEE DRAWING S2-15217.
11. REFER TO S2-15223 AND S2-15224 AND CROSS REFERENCE CHARTS FOR CRIMP TOOL DATA.



ALL REFERENCES TO DEUTSCH PRODUCTS OR SPECIFICATIONS ARE FOR COMPARISON PURPOSES ONLY, AND REFER TO DEUTSCH INDUSTRIAL PRODUCTS.

| QUANTITY | PART NUMBER | MATERIALS LIST | DESCRIPTION | ITEM |
|----------|---------------|----------------|---|------|
| 1 | MX-3950 | ROTOR | SINE SYSTEMS CORPORATION | |
| 1 | AT17-002-0200 | CRIMP | A Subsidiary of Amphenol Corporation 44724 Moley Drive Clinton Township, MI 48036 | |
| 1 | AT17-101-0200 | CRIMP | | |
| 1 | AT17-103-0200 | CRIMP | | |
| 1 | AT17-210-0200 | CRIMP | | |
| 1 | AT17-211-0200 | CRIMP | | |
| 1 | AT17-213-0200 | CRIMP | | |
| 1 | AT17-214-0200 | CRIMP | | |
| 1 | AT17-217-0200 | CRIMP | | |
| 1 | AT17-218-0200 | CRIMP | | |
| 1 | AT17-310-0200 | CRIMP | | |
| 1 | AT17-311-0200 | CRIMP | | |
| 1 | AT17-313-0200 | CRIMP | | |
| 1 | AT17-304-0200 | CRIMP | | |
| 1 | AT17-317-0200 | CRIMP | | |

| UNLESS OTHERWISE SPECIFIED | SIGNATURES | DATE |
|---------------------------------------|------------------|--------|
| 1) All dimensions are in inches. | DESIGNER: ROTOR | 4/7/09 |
| 2) All tolerances are per ASME Y14.5. | CHECKER: RONE | 6/8/09 |
| 3) Plating standards per ASME Y14.5. | ENGINEER: BERNIM | 6/8/09 |
| 4) Plating standards per ASME Y14.5. | APPROVAL: BERNIM | 6/8/09 |

| PROCESS SPECIFICATIONS | THE USE OF THIS DRAWING IS SPECIFIC TO THE PART AND PERFORMANCE DATA. ANY CHANGES TO THIS DRAWING MUST BE APPROVED BY THE ORIGINAL DESIGNER. |
|-----------------------------|--|
| MA | CRIMP DATA, STAMPED CONTACTS FOR CRIMPER MFX-3950 |
| SIZE: 1/8" (3.18mm) NOMINAL | SCALE: NONE |
| 10K44 | S2-15222 |
| SHEET 1 OF 1 | |

| REVISIONS | | | |
|-----------|------|-----|-----------------------|
| REV | ZONE | ECO | DESCRIPTION |
| A1 | - | - | RELEASE NUMBER 016971 |
| | | | DATE 6/12/09 |
| | | | BY B.O.B. |
| | | | APP. M.F.F. |

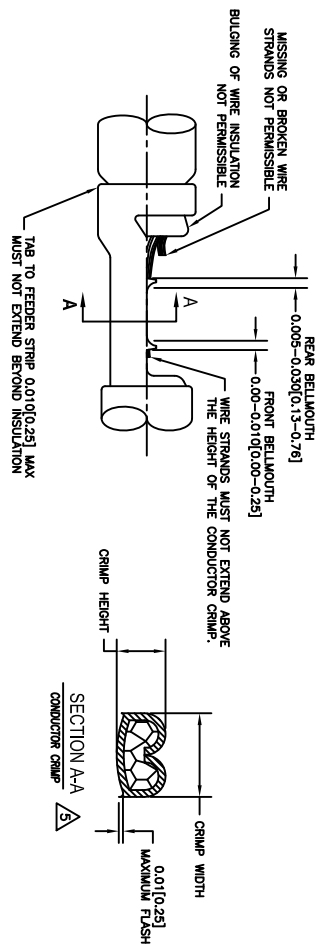
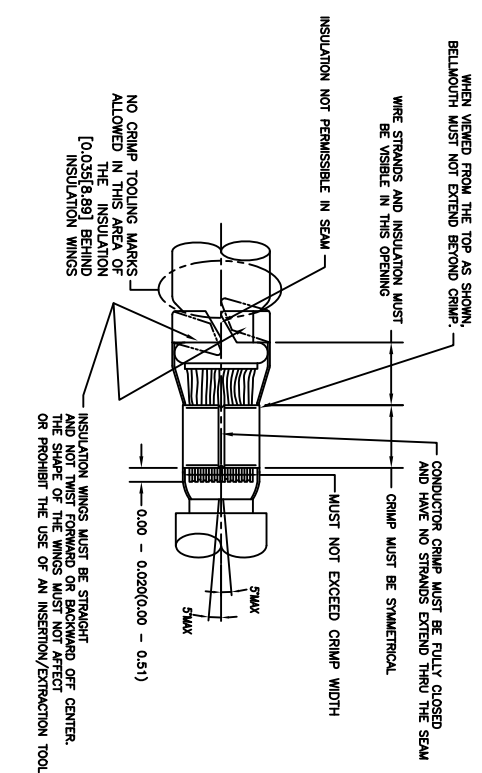
| STAMPED CONTACT PART NUMBER (1009=PIN 1009=SOCKET) | SIZE | CONDUCTOR WIRE SIZE | CRIMP HEIGHT +0.001/-0.002 INCH (+0.025/-0.05 mm) | CRIMP WIDTH ±0.003 INCH (±0.08 mm) | CONDUCTOR PUNCH NUMBER | CONDUCTOR ANVIL NUMBER | CRIMP TENSILE REFERENCE (LBS/IN) |
|---|------|---|--|---|------------------------|---------------------------------|----------------------------------|
| A160-14-011x A162-14-011x INSULATION RANGE 0.095-0.150(2.41-3.81) | 16 | 14 AWG 2.00mm ² 1.50mm ² 16 AWG 1.00mm ² 18 AWG | 0.0591(1.40) 0.0591(1.40) 0.0591(1.40) 0.0501(1.27) 0.0491(1.24) | 0.094(2.39) 0.094(2.39) 0.094(2.39) 0.084(2.39) 0.084(2.39) | | A117-4083-0200 A117-183-0200 | 291(111) |
| A160-16-011x A162-16-011x INSULATION RANGE 0.075-0.140(1.91-3.59) | 16 | 14 AWG 2.00mm ² 1.50mm ² 16 AWG 1.00mm ² 18 AWG | 0.0591(1.40) 0.0591(1.40) 0.0591(1.40) 0.0501(1.27) 0.0491(1.24) | 0.094(2.39) 0.094(2.39) 0.094(2.39) 0.084(2.39) 0.084(2.39) | | A117-4083-0200 A117-183-0200 | 291(111) |
| A160-16-069x A162-16-069x INSULATION RANGE 0.059-0.100(1.49-2.54) | 16 | 16 AWG 1.00mm ² 0.75mm ² 20 AWG 0.50mm ² | 0.0501(1.27) 0.0501(1.27) 0.0491(1.24) 0.0491(1.24) | 0.079(2.01) 0.079(2.01) 0.079(2.01) 0.079(2.01) | | A117-4082-0200 A117-182-0200 | 291(111) 19(67) |

CROSS REFERENCE

| INSULATION DIAMETER RANGE | INSULATION PUNCH NUMBER | INSULATION ANVIL NUMBER | SINE PART NUMBER | DEUTSCH PART NUMBER |
|---------------------------|-------------------------|-------------------------|------------------|---------------------|
| 0.120-0.150 [3.05-3.81] | A117-225-0200 | A117-326-0200 | MPX-3953 | DCT1620-02-00 |
| 0.105-0.125 [2.67-3.18] | A117-226-0200 | A117-326-0200 | A117-083-0200 | 1017-083-0200 |
| 0.085-0.111 [2.16-2.82] | A117-227-0200 | A117-327-0200 | A117-082-0200 | 1017-082-0200 |
| 0.075-0.105 [1.91-2.67] | A117-228-0200 | A117-328-0200 | A117-183-0200 | 1017-183-0200 |
| 0.063-0.094 [1.62-2.39] | A117-229-0200 | A117-329-0200 | A117-182-0200 | 1017-182-0200 |
| 0.050-0.075 [1.27-1.91] | A117-230-0200 | A117-330-0200 | A117-225-0200 | 1017-225-0200 |
| | | | A117-226-0200 | 1017-226-0200 |
| | | | A117-227-0200 | 1017-227-0200 |
| | | | A117-228-0200 | 1017-228-0200 |
| | | | A117-229-0200 | 1017-229-0200 |
| | | | A117-230-0200 | 1017-230-0200 |
| | | | A117-325-0200 | 1017-325-0200 |
| | | | A117-326-0200 | 1017-326-0200 |
| | | | A117-327-0200 | 1017-327-0200 |
| | | | A117-328-0200 | 1017-328-0200 |
| | | | A117-329-0200 | 1017-329-0200 |
| | | | A117-330-0200 | 1017-330-0200 |

NOTES: UNLESS OTHERWISE SPECIFIED

1. ALL DIMENSIONS ARE IN INCHES(mm).
2. FORCES ARE IN POUNDS(LBS) AND NEWTONS(N).
3. "X"= PLATING SUFFIX. SEE INDIVIDUAL CONTACT DRAWING.
4. WIRE STRIP LENGTH: 0.175±0.02(4.43±0.54). BROKEN OR MISSING CONDUCTOR STRANDS ARE NOT ACCEPTABLE. USE A BLADE MICROMETER (0.100(2.54) MIN SPINDLE AND 0.060(0.010(1.50)(0.040) ANVIL) TO MEASURE THE CONDUCTOR CRIMP. SEE SECTION AA.
5. CRIMP TENSILE STRENGTH IS DETERMINED AT A PULL RATE SPEED OF 1.00 INCH(2.54) PER MINUTE. INSULATION WINGS ARE REMOVED FOR TEST. ACTUAL CRIMP TENSILE STRENGTH DEPENDS ON WIRE/CONDUCTOR SIZE. VALUES ON THIS SPECIFICATION ARE FOR REFERENCE ONLY.
6. INSULATION DIAMETER RANGE IS DETERMINED BY CONNECTOR AND ITS WIRE SEAL SIZE. SEE CONNECTOR DRAWING FOR INSULATION RANGE.
7. INSULATION CRIMP DIAMETER SHOULD BE THE EQUAL OR LESS THAN THE DIAMETER OF THE WIRE INSULATION (HARD OR TEFION INSULATION MAY BE AN EXCEPTION). INSULATION CRIMP SHALL NOT AFFECT REMOVAL TOOL PERFORMANCE AND SHALL NOT DAMAGE CONNECTOR GROMMET SEAL.
8. CONDUCTOR TYPE ARE PER SAE J1128(AWG) AND ISO 6122(METRIC)
9. FOR CONTACT MATERIAL AND PERFORMANCE DATA, SEE DRAWING S2-15217.
10. REFER TO S2-15223 AND S2-15224 AND CROSS REFERENCE CHARTS FOR CRIMP TOOL DATA.



ALL REFERENCES TO DEUTSCH PRODUCTS OR SPECIFICATIONS ARE FOR COMPARISON PURPOSES ONLY, AND REFER TO DEUTSCH INDUSTRIAL PRODUCTS.

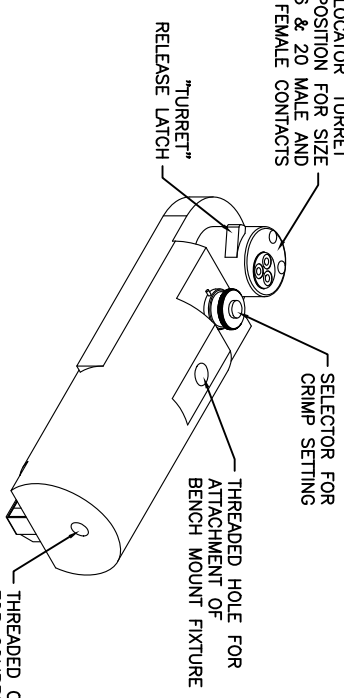
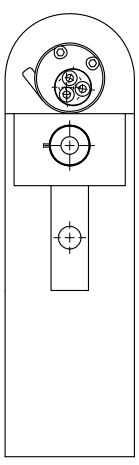
| QUANTITY | PART NUMBER | MATERIALS LIST | DESCRIPTION | ITEM |
|--|--------------|---|-------------|------|
| UNLESS OTHERWISE SPECIFIED | | | | |
| 1) All dimensions are in inches. | | | | |
| 2) Plating is as shown. | | | | |
| 3) Plating is as shown. | | | | |
| 4) Plating is as shown. | | | | |
| 5) Reduction Standard Per: MIL-STD-20020 | | | | |
| 6) Material Specification: NA | | | | |
| PROCESS SPECIFICATIONS: | | | | |
| THE USE OF THIS DRAWING IS SPECIFIC TO THE PART AND PERFORMANCE DATA. ALL DIMENSIONS ARE SUBJECT TO NORMAL DIMENSIONAL VARIATION. ALL DIMENSIONS REFERENCED HEREON ARE DRAWING UNLESS OTHERWISE SPECIFIED. | | | | |
| SIGNATURES | | DATE | | |
| DESIGNER: POTER | DATE: 4/7/09 | SINE Systems Corporation | | |
| CHECKER: RONE | DATE: 6/8/09 | A Subsidiary of Amphenol Corporation | | |
| ENGINEER: BERNIM | DATE: 6/8/09 | 44724 Moley Drive | | |
| APPROVAL: BERNIM | DATE: 6/8/09 | Clinton Township, MI 48036 | | |
| CUSTOMER: | | CRIMP DATA, STAMPED CONTACTS FOR CRIMPER MPX-3953 | | |
| PROCESS SPECIFICATIONS: | | SIZE: PUNCH NUMBER: S2-15221 | | |
| NEXT ASSY: | | SCALE: NONE | | |
| | | SHEET 1 OF 1 | | |

A B C D

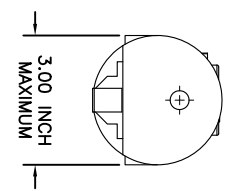
4 3 2 1

| REVISONS | | DESCRIPTION | DATE | BY | APPR |
|----------|------|-------------|----------------|---------|--------|
| REV | ZONE | ECO | RELEASE NUMBER | B.D.B. | M.R.F. |
| A1 | - | - | 016571 | 6/12/09 | |

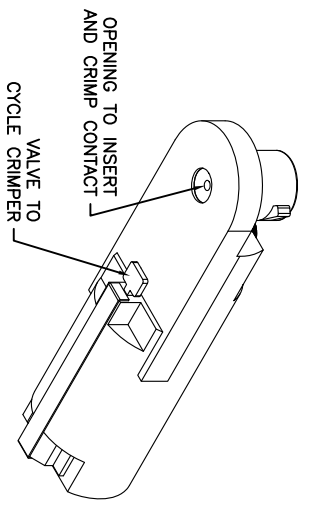
CONTACT LOCATOR "TURRET"
THREE POSITION FOR SIZE
12, 16 & 20 MALE AND
FEMALE CONTACTS



THREADED OPENING
FOR COMPRESSED
AIR FITTING



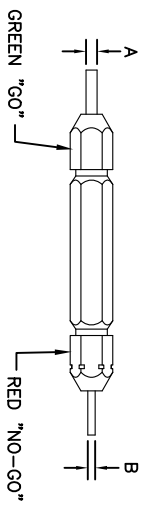
- THE CA-5E12 IS A COMPRESSED AIR OPERATED HAND CRIMPER FOR ELECTRICAL CONTACTS. IT IS ADJUSTABLE TO 3 CONTACT SIZES (12, 16 & 20) AND 8 INDENTER CRIMP POSITIONS FOR DIFFERENT WIRE SIZES (12AWG THRU 26 AWG).
- 80-120 PSI COMPRESSED AIR.
- WEIGHT: 3.1 LBS
- SELECTING CONTACT SIZE: PRESS THE RELEASE LATCH ON SIDE OF THE CONTACT LOCATOR "TURRET". ROTATE TO THE DESIRED CONTACT SIZE. THE TOP OF THE "TURRET" IS EMBOSSED WITH THE CONTACT SIZES.
- SELECTING WIRE SIZE: GRASP THE SELECTOR AND ROTATE TO THE DESIRED NUMBER.



| GAGE PART NO. | A GO DIA. | B NO-GO DIA. | SELECTOR NUMBER |
|---------------|-----------|--------------|-----------------|
| G125 | .0390 | .0440 | 4 |

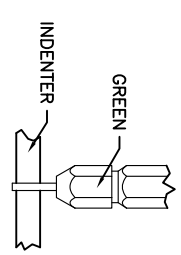
GAGING INSTRUCTIONS

CAUTION!
DO NOT CRIMP GAGE!

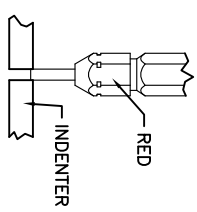


"GO" GAGING: OPERATE TOOL TO FULLY CLOSED POSITION. INSERT "GO" GAGE END AS SHOWN. GAGE MUST PASS FREELY BETWEEN INDENTER TIPS.

"NO-GO" GAGING: OPERATE TOOL TO FULLY CLOSED POSITION. INSERT "NO-GO" GAGE END AS SHOWN. THE "NO-GO" MAY PARTIALLY ENTER THE INDENTER OPENING, BUT MUST NOT PASS COMPLETELY THROUGH THE OPENING.



| SELECTOR NUMBER | A GO DIA. | B NO-GO DIA. |
|-----------------|-----------|--------------|
| 1 | .0280 | .0330 |
| 2 | .0320 | .0370 |
| 3 | .0360 | .0410 |
| 4 | .0390 | .0440 |
| 5 | .0450 | .0500 |
| 6 | .0520 | .0570 |
| 7 | .0590 | .0640 |
| 8 | .0880 | .0730 |



| CONTACT SIZE | LOCATOR "TURRET" POSITION | WIRE COLOR | SELECTOR NUMBER |
|--------------|---------------------------|------------|-----------------|
| 20-20 | RED | 1 | 2 |
| 16-22 | BLUE | 4 | 5 |
| 16-20 | BLUE | 1 | 2 |
| 16-16 | BLUE | 4 | 5 |
| 12-16 | YELLOW | 4 | 5 |
| 12-12 | YELLOW | | 7 |
| | | | 8 |

MATERIALS LIST

QUANTITY: 1
PART NUMBER: S2-15220
DESCRIPTION: CRIMPER, PNEUMATIC, CA-5E12
ITEM: 1

SINE Systems Corporation
A Subsidiary of Amphenol Corporation
44724 Mowley Drive
Canton Township, MI 48036

INSTRUCTIONS FOR CA-5E12 CRIMPER, PNEUMATIC
SIZE: 10K44
SCALE: NONE
S2-15220
SHEET: 1 OF 1

| REV ZONE | | ECO | | REVISIONS | | DESCRIPTION | | DATE | BY | APPR |
|----------|---|-----|---|----------------|--------|-------------|--------|--------|----|------|
| AI | - | - | - | RELEASE NUMBER | 016571 | 6/12/09 | B.D.B. | M.R.F. | | |

CONTACT LOCATOR
"TURRET"
THREE POSITIONS FOR
SIZE 12, 16 & 20 MALE
AND FEMALE CONTACTS

"TURRET" RELEASE LATCH

6.25 INCH
MAXIMUM
OPEN

2.30 INCH
MAXIMUM
CLOSED

SELECTOR FOR CRIMP
SETTING

1.125 INCH MAX.

9.75 INCH MAXIMUM

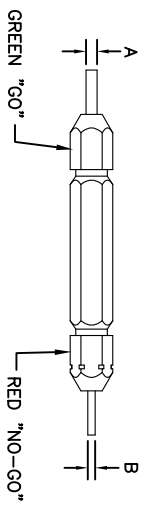
1.00 INCH MAX.

- NOTES:
- THE CA-5D12 IS A HAND OPERATED CRIMPER FOR ELECTRICAL CONTACTS. IT IS ADJUSTABLE TO 3 CONTACT SIZES (12, 16 & 20) AND 8 INDENTER CRIMP POSITIONS FOR DIFFERENT WIRE SIZES (12AWG THRU 26 AWG).
 - WEIGHT: 1.64 LBS
 - SELECTING CONTACT SIZE: PRESS THE RELEASE LATCH ON SIDE OF THE CONTACT LOCATOR "TURRET". ROTATE TO THE DESIRED CONTACT SIZE. THE TOP OF THE "TURRET" IS EMBOSSED WITH THE CONTACT SIZES.
 - SELECTING WIRE SIZE: REMOVE THE LOCKING CLIP. GRASP THE SELECTOR AND ROTATE TO THE DESIRED NUMBER.

| GAGE PART NO. | A GO DIA. | B NO-GO DIA. | SELECTOR NUMBER |
|---------------|-----------|--------------|-----------------|
| G125 | .0390 | .0440 | 4 |

GAGING INSTRUCTIONS

CAUTION!
DO NOT CRIMP GAGE!

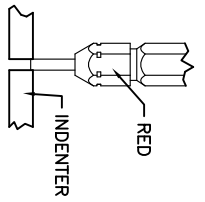
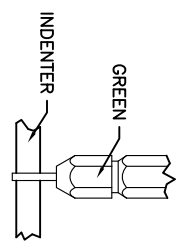


"GO" GAGING: OPERATE TOOL TO FULLY CLOSED POSITION. INSERT "GO" GAGE END AS SHOWN. GAGE MUST PASS FREELY BETWEEN INDENTER TIPS.

"NO-GO" GAGING: OPERATE TOOL TO FULLY CLOSED POSITION. INSERT "NO-GO" GAGE END AS SHOWN. THE "NO-GO" MAY PARTIALLY ENTER THE INDENTER OPENING, BUT MUST NOT PASS COMPLETELY THROUGH THE OPENING.

| CONTACT SIZE | LOCATOR "TURRET" POSITION | WIRE COLOR | 1 | 2 | 3 | 4 | 5 | 6 | 7 | 8 |
|--------------|---------------------------|------------|---|---|---|---|---|---|---|---|
| 20-20 | RED | 1 | 2 | 3 | 4 | | | | | |
| 16-22 | BLUE | 4 | 5 | 6 | | | | | | |
| 16-20 | BLUE | 1 | 2 | 3 | 4 | | | | | |
| 16-16 | BLUE | 4 | 5 | 6 | | | | | | |
| 12-16 | YELLOW | 4 | 5 | 6 | | | | | | |
| 12-12 | YELLOW | | | | | | | | | 8 |

| SELECTOR NUMBER | A GO DIA. | B NO-GO DIA. |
|-----------------|-----------|--------------|
| 1 | .0280 | .0330 |
| 2 | .0320 | .0370 |
| 3 | .0360 | .0410 |
| 4 | .0390 | .0440 |
| 5 | .0450 | .0500 |
| 6 | .0520 | .0570 |
| 7 | .0590 | .0640 |
| 8 | .0680 | .0730 |



MATERIALS LIST

DESCRIPTION

QUANTITY

UNLESS OTHERWISE SPECIFIED
1) All dimensions are in inches.
2) Pl. DEC 2010
3) Pl. DEC 2010
4) Pl. DEC 2010
5) Pl. DEC 2010
6) Pl. DEC 2010
7) Pl. DEC 2010
8) Pl. DEC 2010
9) Pl. DEC 2010
10) Pl. DEC 2010
11) Pl. DEC 2010
12) Pl. DEC 2010
13) Pl. DEC 2010
14) Pl. DEC 2010
15) Pl. DEC 2010
16) Pl. DEC 2010
17) Pl. DEC 2010
18) Pl. DEC 2010
19) Pl. DEC 2010
20) Pl. DEC 2010
21) Pl. DEC 2010
22) Pl. DEC 2010
23) Pl. DEC 2010
24) Pl. DEC 2010
25) Pl. DEC 2010
26) Pl. DEC 2010
27) Pl. DEC 2010
28) Pl. DEC 2010
29) Pl. DEC 2010
30) Pl. DEC 2010
31) Pl. DEC 2010
32) Pl. DEC 2010
33) Pl. DEC 2010
34) Pl. DEC 2010
35) Pl. DEC 2010
36) Pl. DEC 2010
37) Pl. DEC 2010
38) Pl. DEC 2010
39) Pl. DEC 2010
40) Pl. DEC 2010
41) Pl. DEC 2010
42) Pl. DEC 2010
43) Pl. DEC 2010
44) Pl. DEC 2010
45) Pl. DEC 2010
46) Pl. DEC 2010
47) Pl. DEC 2010
48) Pl. DEC 2010
49) Pl. DEC 2010
50) Pl. DEC 2010
51) Pl. DEC 2010
52) Pl. DEC 2010
53) Pl. DEC 2010
54) Pl. DEC 2010
55) Pl. DEC 2010
56) Pl. DEC 2010
57) Pl. DEC 2010
58) Pl. DEC 2010
59) Pl. DEC 2010
60) Pl. DEC 2010
61) Pl. DEC 2010
62) Pl. DEC 2010
63) Pl. DEC 2010
64) Pl. DEC 2010
65) Pl. DEC 2010
66) Pl. DEC 2010
67) Pl. DEC 2010
68) Pl. DEC 2010
69) Pl. DEC 2010
70) Pl. DEC 2010
71) Pl. DEC 2010
72) Pl. DEC 2010
73) Pl. DEC 2010
74) Pl. DEC 2010
75) Pl. DEC 2010
76) Pl. DEC 2010
77) Pl. DEC 2010
78) Pl. DEC 2010
79) Pl. DEC 2010
80) Pl. DEC 2010
81) Pl. DEC 2010
82) Pl. DEC 2010
83) Pl. DEC 2010
84) Pl. DEC 2010
85) Pl. DEC 2010
86) Pl. DEC 2010
87) Pl. DEC 2010
88) Pl. DEC 2010
89) Pl. DEC 2010
90) Pl. DEC 2010
91) Pl. DEC 2010
92) Pl. DEC 2010
93) Pl. DEC 2010
94) Pl. DEC 2010
95) Pl. DEC 2010
96) Pl. DEC 2010
97) Pl. DEC 2010
98) Pl. DEC 2010
99) Pl. DEC 2010
100) Pl. DEC 2010

INSTRUCTIONS FOR CA-5D12
CRIMPER, HAND, MACHINED CONTACTS

SIZE: 10K44
SCALE: NONE
S2-15219
SHEET: 1 OF 1

SINE Systems Corporation
A Subsidiary of Amphenol Corporation
44724 Moley Drive
Canton Township, MI 48036

DATE: 6/3/09
DRAWN: BERNI
CHECKED: RONC
ENGINEER: BERNI
APPROVAL: BERNI
DATE: 6/3/09

A

B

C

D

4

3

2

1

4

3

2

1

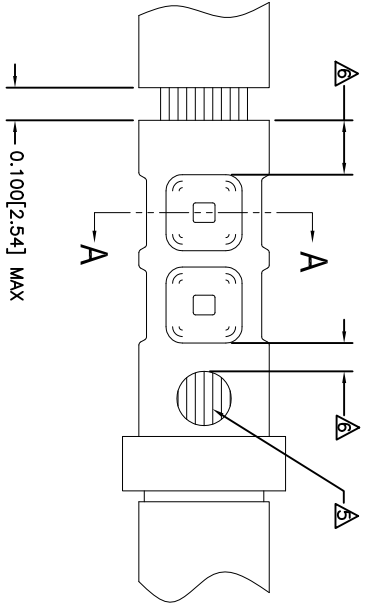
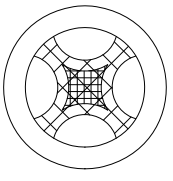
| REVOLUTIONS | | DESCRIPTION | DATE | BY | APPR |
|-------------|------|-------------|-----------------------|--------|--------|
| REV | ZONE | ECO | RELEASE NUMBER 016571 | B.D.B. | M.R.F. |
| A1 | - | - | | | |

| CONTACT P/N | SIZE TYPE | WIRE SIZE | REF. ONLY TENSILE LBS[N] |
|---------------|-----------|---|--------------------------|
| AT60-202-16XX | 16PIN | 1.5mm ² 16AWG | 35[156] |
| AT62-201-16XX | 16SOC | 1.0mm ² 18AWG 0.75mm ² 20AWG | 25[111] |
| | | 0.50mm ² | 20[89] |

| RECOMMENDED STRIP LENGTH | |
|--------------------------|------------------------|
| CONTACT SIZE | STRIP LENGTH INCH[MM] |
| 16 | 0.250-0.312[6.35-7.92] |

| CRIMP TOOLING | | | | | | |
|---------------|------------------------|-----------------------------------|----------------------|------------------|----------------------|--------------------------|
| CONTACT SIZE | CRIMP TOOL PART NUMBER | CONTACT LOCATOR "TURRET" POSITION | WIRE SELECTOR NUMBER | GO GAGE INCH[MM] | "NOGO" GAGE INCH[MM] | REMARKS |
| 16 | CA-5D12 CA-5E12 | BLUE | 6 | 0.052[1.32] | 0.057[1.45] | |
| 16 | CA-5D12 CA-5E12 | BLUE | 4 | 0.039[.991] | 0.044[1.12] | SIZE 16 WITH 20 AWG WIRE |

- NOTES: UNLESS OTHERWISE SPECIFIED
- 1. MINIMUM +/-0.0005 [0.013] TOLERANCE STEEL GAGE PINS. DO NOT CRIMP GAGE PINS. CLOSE DIE, THEN USE GAGE PINS.
 - 2. WHEN XX=31, CONTACT PLATING IS GOLD WHEN XX=141, CONTACT PLATING IS NICKEL
 - 3. PULL RATE OF 1.0 IN [25.4] PER MINUTE. ACTUAL STRENGTH DEPENDS ON WIRE SIZE.
 - 4. FOR CONTACT PERFORMANCE, MATERIAL SPECIFICATIONS AND APPLICATION DETAILS, SEE DRAWING S2-15217.
 - 5. CONDUCTOR STRANDS MUST BE VISIBLE THRU THE INSPECTION HOLE PRIOR TO CRIMP.
 - 6. PROPER CRIMP TOOLING WILL PRODUCE A CRIMP CENTERED BETWEEN THE INSPECTION HOLE AND CRIMP BARREL END.
 - 7. WIRE SIZES PER SAE J1128 AND J1560 [DIN 72551-6] REFERENCE INSTRUCTION MANUALS S2-15219 AND S2-15220 FOR CA-5D12 AND CA-5E12 HAND AND PNEUMATIC CRIMPER.
 - 8. THE CRIMP HEIGHT DIMENSION AFTER CRIMPING MAY VARY FROM THE VALUES LISTED FOR THE "GO-NOGO" PINS.



SECTION A-A
CRIMP CROSS-SECTION

| QUANTITY | PART NUMBER | DESCRIPTION | ITEM |
|----------|--|-------------|------|
| | MATERIALS LIST | | |
| | SIGNATURES | DATE | |
| | DESIGNER: BERNUIM | 6/3/09 | |
| | CHECKER: RONE | 6/3/09 | |
| | ENGINEER: BERNUIM | | |
| | APPROVAL: BERNUIM | 6/3/09 | |
| | CUSTOMER: M/A | | |
| | UNLESS OTHERWISE SPECIFIED | | |
| | 1) All dimensions are in inches. | | |
| | 2) All tolerances are as shown. | | |
| | 3) Pl. SEE 30.00 [1] Position 31/14 | | |
| | 4) Pl. SEE 30.01 [1] Position 31/14 | | |
| | 5) Fabrication Standards Per: A | | |
| | 6) Pl. SEE 30.02 [1] Position 31/14 | | |
| | 7) Pl. SEE 30.03 [1] Position 31/14 | | |
| | 8) Pl. SEE 30.04 [1] Position 31/14 | | |
| | 9) Pl. SEE 30.05 [1] Position 31/14 | | |
| | 10) Pl. SEE 30.06 [1] Position 31/14 | | |
| | 11) Pl. SEE 30.07 [1] Position 31/14 | | |
| | 12) Pl. SEE 30.08 [1] Position 31/14 | | |
| | 13) Pl. SEE 30.09 [1] Position 31/14 | | |
| | 14) Pl. SEE 30.10 [1] Position 31/14 | | |
| | 15) Pl. SEE 30.11 [1] Position 31/14 | | |
| | 16) Pl. SEE 30.12 [1] Position 31/14 | | |
| | 17) Pl. SEE 30.13 [1] Position 31/14 | | |
| | 18) Pl. SEE 30.14 [1] Position 31/14 | | |
| | 19) Pl. SEE 30.15 [1] Position 31/14 | | |
| | 20) Pl. SEE 30.16 [1] Position 31/14 | | |
| | 21) Pl. SEE 30.17 [1] Position 31/14 | | |
| | 22) Pl. SEE 30.18 [1] Position 31/14 | | |
| | 23) Pl. SEE 30.19 [1] Position 31/14 | | |
| | 24) Pl. SEE 30.20 [1] Position 31/14 | | |
| | 25) Pl. SEE 30.21 [1] Position 31/14 | | |
| | 26) Pl. SEE 30.22 [1] Position 31/14 | | |
| | 27) Pl. SEE 30.23 [1] Position 31/14 | | |
| | 28) Pl. SEE 30.24 [1] Position 31/14 | | |
| | 29) Pl. SEE 30.25 [1] Position 31/14 | | |
| | 30) Pl. SEE 30.26 [1] Position 31/14 | | |
| | 31) Pl. SEE 30.27 [1] Position 31/14 | | |
| | 32) Pl. SEE 30.28 [1] Position 31/14 | | |
| | 33) Pl. SEE 30.29 [1] Position 31/14 | | |
| | 34) Pl. SEE 30.30 [1] Position 31/14 | | |
| | 35) Pl. SEE 30.31 [1] Position 31/14 | | |
| | 36) Pl. SEE 30.32 [1] Position 31/14 | | |
| | 37) Pl. SEE 30.33 [1] Position 31/14 | | |
| | 38) Pl. SEE 30.34 [1] Position 31/14 | | |
| | 39) Pl. SEE 30.35 [1] Position 31/14 | | |
| | 40) Pl. SEE 30.36 [1] Position 31/14 | | |
| | 41) Pl. SEE 30.37 [1] Position 31/14 | | |
| | 42) Pl. SEE 30.38 [1] Position 31/14 | | |
| | 43) Pl. SEE 30.39 [1] Position 31/14 | | |
| | 44) Pl. SEE 30.40 [1] Position 31/14 | | |
| | 45) Pl. SEE 30.41 [1] Position 31/14 | | |
| | 46) Pl. SEE 30.42 [1] Position 31/14 | | |
| | 47) Pl. SEE 30.43 [1] Position 31/14 | | |
| | 48) Pl. SEE 30.44 [1] Position 31/14 | | |
| | 49) Pl. SEE 30.45 [1] Position 31/14 | | |
| | 50) Pl. SEE 30.46 [1] Position 31/14 | | |
| | 51) Pl. SEE 30.47 [1] Position 31/14 | | |
| | 52) Pl. SEE 30.48 [1] Position 31/14 | | |
| | 53) Pl. SEE 30.49 [1] Position 31/14 | | |
| | 54) Pl. SEE 30.50 [1] Position 31/14 | | |
| | 55) Pl. SEE 30.51 [1] Position 31/14 | | |
| | 56) Pl. SEE 30.52 [1] Position 31/14 | | |
| | 57) Pl. SEE 30.53 [1] Position 31/14 | | |
| | 58) Pl. SEE 30.54 [1] Position 31/14 | | |
| | 59) Pl. SEE 30.55 [1] Position 31/14 | | |
| | 60) Pl. SEE 30.56 [1] Position 31/14 | | |
| | 61) Pl. SEE 30.57 [1] Position 31/14 | | |
| | 62) Pl. SEE 30.58 [1] Position 31/14 | | |
| | 63) Pl. SEE 30.59 [1] Position 31/14 | | |
| | 64) Pl. SEE 30.60 [1] Position 31/14 | | |
| | 65) Pl. SEE 30.61 [1] Position 31/14 | | |
| | 66) Pl. SEE 30.62 [1] Position 31/14 | | |
| | 67) Pl. SEE 30.63 [1] Position 31/14 | | |
| | 68) Pl. SEE 30.64 [1] Position 31/14 | | |
| | 69) Pl. SEE 30.65 [1] Position 31/14 | | |
| | 70) Pl. SEE 30.66 [1] Position 31/14 | | |
| | 71) Pl. SEE 30.67 [1] Position 31/14 | | |
| | 72) Pl. SEE 30.68 [1] Position 31/14 | | |
| | 73) Pl. SEE 30.69 [1] Position 31/14 | | |
| | 74) Pl. SEE 30.70 [1] Position 31/14 | | |
| | 75) Pl. SEE 30.71 [1] Position 31/14 | | |
| | 76) Pl. SEE 30.72 [1] Position 31/14 | | |
| | 77) Pl. SEE 30.73 [1] Position 31/14 | | |
| | 78) Pl. SEE 30.74 [1] Position 31/14 | | |
| | 79) Pl. SEE 30.75 [1] Position 31/14 | | |
| | 80) Pl. SEE 30.76 [1] Position 31/14 | | |
| | 81) Pl. SEE 30.77 [1] Position 31/14 | | |
| | 82) Pl. SEE 30.78 [1] Position 31/14 | | |
| | 83) Pl. SEE 30.79 [1] Position 31/14 | | |
| | 84) Pl. SEE 30.80 [1] Position 31/14 | | |
| | 85) Pl. SEE 30.81 [1] Position 31/14 | | |
| | 86) Pl. SEE 30.82 [1] Position 31/14 | | |
| | 87) Pl. SEE 30.83 [1] Position 31/14 | | |
| | 88) Pl. SEE 30.84 [1] Position 31/14 | | |
| | 89) Pl. SEE 30.85 [1] Position 31/14 | | |
| | 90) Pl. SEE 30.86 [1] Position 31/14 | | |
| | 91) Pl. SEE 30.87 [1] Position 31/14 | | |
| | 92) Pl. SEE 30.88 [1] Position 31/14 | | |
| | 93) Pl. SEE 30.89 [1] Position 31/14 | | |
| | 94) Pl. SEE 30.90 [1] Position 31/14 | | |
| | 95) Pl. SEE 30.91 [1] Position 31/14 | | |
| | 96) Pl. SEE 30.92 [1] Position 31/14 | | |
| | 97) Pl. SEE 30.93 [1] Position 31/14 | | |
| | 98) Pl. SEE 30.94 [1] Position 31/14 | | |
| | 99) Pl. SEE 30.95 [1] Position 31/14 | | |
| | 100) Pl. SEE 30.96 [1] Position 31/14 | | |
| | 101) Pl. SEE 30.97 [1] Position 31/14 | | |
| | 102) Pl. SEE 30.98 [1] Position 31/14 | | |
| | 103) Pl. SEE 30.99 [1] Position 31/14 | | |
| | 104) Pl. SEE 30.100 [1] Position 31/14 | | |



Компания «ЭлектроПласт» предлагает заключение долгосрочных отношений при поставках импортных электронных компонентов на взаимовыгодных условиях!

Наши преимущества:

- Оперативные поставки широкого спектра электронных компонентов отечественного и импортного производства напрямую от производителей и с крупнейших мировых складов;
- Поставка более 17-ти миллионов наименований электронных компонентов;
- Поставка сложных, дефицитных, либо снятых с производства позиций;
- Оперативные сроки поставки под заказ (от 5 рабочих дней);
- Экспресс доставка в любую точку России;
- Техническая поддержка проекта, помощь в подборе аналогов, поставка прототипов;
- Система менеджмента качества сертифицирована по Международному стандарту ISO 9001;
- Лицензия ФСБ на осуществление работ с использованием сведений, составляющих государственную тайну;
- Поставка специализированных компонентов (Xilinx, Altera, Analog Devices, Intersil, Interpoint, Microsemi, Aeroflex, Peregrine, Syfer, Eurofarad, Texas Instrument, Miteq, Cobham, E2V, MA-COM, Hittite, Mini-Circuits, General Dynamics и др.);

Помимо этого, одним из направлений компании «ЭлектроПласт» является направление «Источники питания». Мы предлагаем Вам помощь Конструкторского отдела:

- Подбор оптимального решения, техническое обоснование при выборе компонента;
- Подбор аналогов;
- Консультации по применению компонента;
- Поставка образцов и прототипов;
- Техническая поддержка проекта;
- Защита от снятия компонента с производства.



Как с нами связаться

Телефон: 8 (812) 309 58 32 (многоканальный)

Факс: 8 (812) 320-02-42

Электронная почта: org@eplast1.ru

Адрес: 198099, г. Санкт-Петербург, ул. Калинина, дом 2, корпус 4, литера А.