



Copyright FD

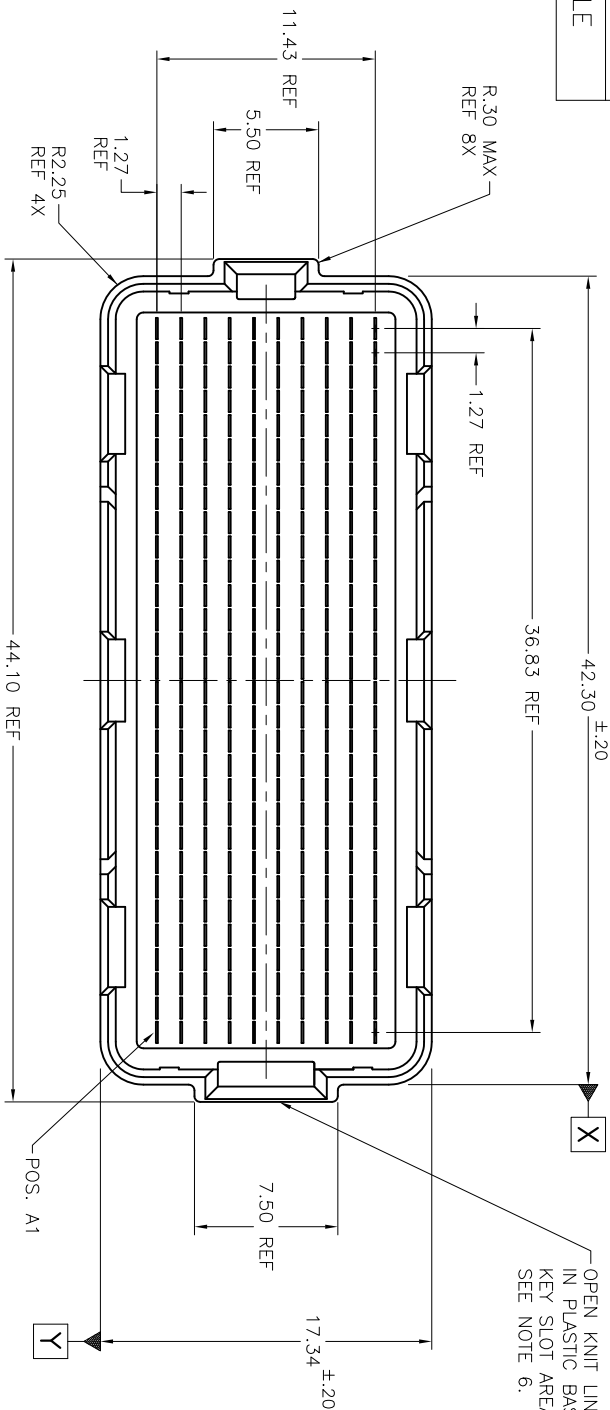


FCIconnect.com

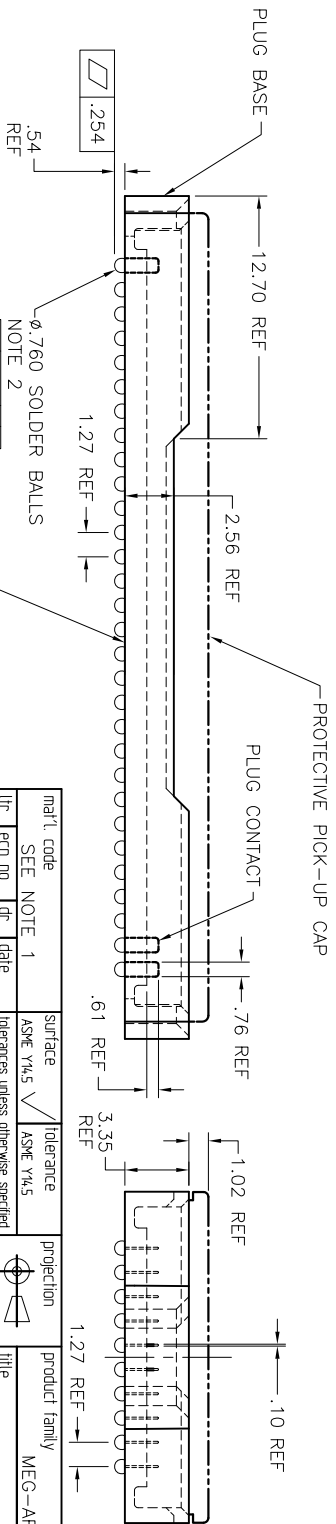


PRODUCT NUMBER

SEE TABLE



OPEN KNIT LINES PERMISSIBLE IN PLASTIC BASE COMPONENT KEY SLOT AREAS (BOTH ENDS). SEE NOTE 6.



NOTE 2
 $\phi .760$ SOLDER BALLS

CONTINUOUS OPEN KNIT LINE CRACKS (TRAVERSING THE ENTIRE BODY LENGTH OF THE CONNECTOR) WHICH CAUSE CRITICAL-TO-FUNCTION DIMENSIONAL CHANGES THAT AFFECT THE CONNECTORS MECHANICAL ALIGNMENT FEATURES ARE NOT PERMISSIBLE. SEE NOTE 6.

Mat'l code	SEE NOTE 1	date	surface	tolerance	projection	product family	title
ltr	ecn no.	dfr	ASPE Y14.5	ASPE Y14.5	MM	MEG-ARRAY	Omm PLUG ASSEMBLY
K	V06-0560	LP	2006-07-14	intolerances unless otherwise specified	XXX.13		10 X 30 = 300 POSITIONS
L	V11-0029	HTB	2011-06-06		XXX.13		
M	V12-0030	SJ	2012-08-06	0' ±2'	XXX.051		
N	V12-0036	DCH	2012-11-13	D. WAUGHEN	1998-12-16		
P	V1-18084	DCH	2014-6-25	D. HARPER	1998-12-16		
R	V-21139	RWB	2015-06-12	D. HARPER	1998-12-16		
S	V-33905	RWB	2019-06-04	D. HARPER	1998-12-16		
Sheet	revision	S	S	S	S		Sheet 1 of 5
index	Sheet	1	2	3	4	5	Size A4



CUSTOMER Drawing

form: AsmXLIC

1 2

3

4

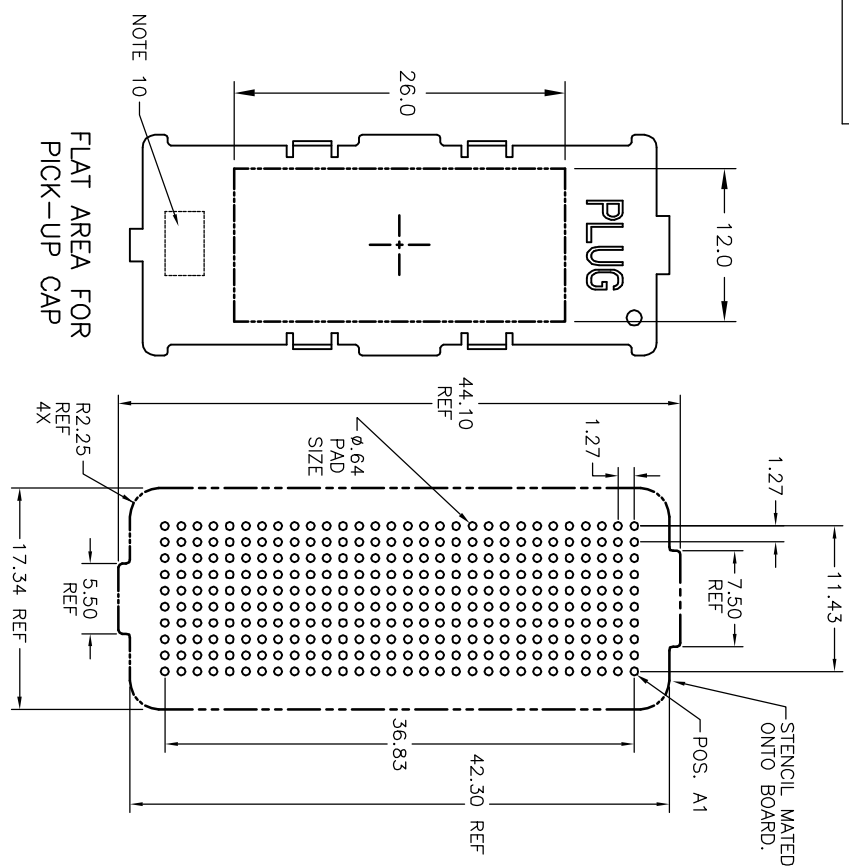


Copyright FCJ



FCJconnect.com

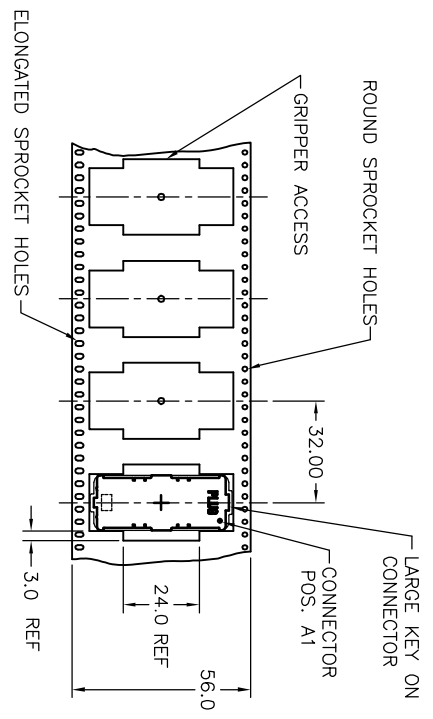
PRODUCT NUMBER	1 2
SEE TABLE	



FLAT AREA FOR PICK-UP CAP

NOTE 10

BOARD PATTERN



DE-REEL DIRECTION

TAPE & REEL PACKAGING SCALE: NONE PER EIA 481-3

mat'l code	SEE NOTE 1	surface	ASPC Y14.5	tolerance	ASPC Y14.5	projection	MM	product family	MEG-ARRAY
lfr	ecm no	dr	date	ASPC Y14.5	tolerance unless otherwise specified	angles	XXX.3	title	0mm PLUG ASSEMBLY
S				0° ±2'	XXX.051	dr	D. WAUGHEN	10 X 30 = 300 POSITIONS	
					XXX.051	dr	D. HARPER	84500	sheet 2 of 5
						dr	D. HARPER	A4	size
						dr	D. HARPER		
						dr	D. HARPER		
sheet	revision					dr	D. HARPER		
index	sheet					dr	D. HARPER		

form: A4mmXic

1

2

3

4



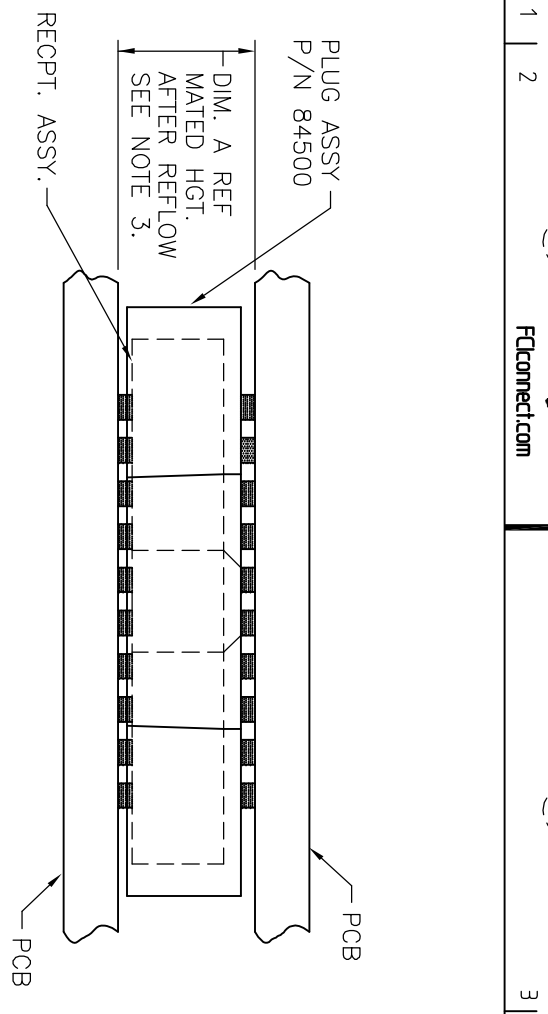
Copyright FCJ



FCJconnect.com



PRODUCT NUMBER	SEE TABLE
----------------	-----------



DIM. A	RECP. ASSY. P/N	PLATING
4.0	84501	SEE NOTE 4.
5.5	84502	*
8.0	84553	SEE NOTE 5.

* 84502 NOT AVAILABLE IN TELCORDIA/NORTEL VERSION.

MATED HEIGHT AFTER REFLOW IS BASED ON ϕ .64mm PAD (METAL-DEFINED) AND .13mm SOLDER PASTE STENCIL THICKNESS. SEE NOTE 3.

END VIEW - MATED CONNECTORS SCALE: NONE

mat'l code	SEE NOTE 1	surface	ASME Y14.5	tolerance	ASME Y14.5	projection	product family
lfr	ecm no	dr	date	ASME Y14.5	tolerances unless otherwise specified	ASME Y14.5	MEG-ARRAY
S				angles	XXX.X	MM	0mm PLUG ASSEMBLY
				dr	XXX.X	Scale 2:1	10 X 30 = 300 POSITION
				dr	XXX.X		84500
				dr	XXX.X		sheet 3 of 5
				dr	XXX.X		size
				dr	XXX.X		A4
				dr	XXX.X		CUSTOMER Drawing
sheet	revision						
index	sheet						



Copyright FD



FCIconnect.com

3 |

4

PRODUCT NUMBER	PICK-UP CAP (NATURAL OR BLACK IN COLOR)	CONTACT PLATING AND THICKNESS	SOLDER BALL	NOTES
84500-002	YES	15µ" (.38µm) Au	SnPb	
84500-002LF	YES	15µ" (.38µm) Au	LEAD FREE	7 & 8
84500-092	YES	15µ" (.38µm) GXT	SnPb	
84500-092LF	YES	15µ" (.38µm) GXT	LEAD FREE	7 & 8
84500-093	WITH VENT HOLES	15µ" (.38µm) GXT	SnPb	7 , 8
84500-093LF	WITH VENT HOLES	15µ" (.38µm) GXT	LEAD FREE	7 , 8
84500-102	YES	30µ" (.76µm) Au	SnPb	
84500-102LF	YES	30µ" (.76µm) Au	LEAD FREE	7 & 8
84500-192	YES	30µ" (.76µm) GXT	SnPb	
84500-192LF	YES	30µ" (.76µm) GXT	LEAD FREE	7 & 8
84500-202	YES	50µ" (1.27µm) Au SPECIAL	SnPb	4, & 5
84500-202LF	YES	50µ" (1.27µm) Au SPECIAL	LEAD FREE	4, 5, 7 & 8
84500-292	YES	50µ" (1.27µm) GXT SPECIAL	SnPb	4, & 5
84500-292LF	YES	50µ" (1.27µm) GXT SPECIAL	LEAD FREE	4, 5, 7, & 8
84500-A02	YES	30µ" (.76µm)	SnPb	9
84500-A02LF	YES	30µ" (.76µm)	LEAD FREE	7, 8 & 9

mat'l code	SNPb	surface	tolerance	projection	product family
SEE NOTE 1	DATE	ASPC Y14.5	ASPC Y14.5	MM	MEG-ARRAY
Eqn. no.	date	Inferences unless otherwise specified		Scale 2:1	title
S		angles	XXX.B		Omm PLUG ASSEMBLY
		0° ±2'	XXX.051		10 X 30 = 300 POSITIONS
		Dr	T. BREWBAKER 2011-06-06		Sheet 4 of 5
		ENQJ	T. BREWBAKER 2011-06-06		84500
		DR	T. BREWBAKER 2011-06-06		A4
		ppjd	D. HORCHLER 2011-06-06		CUSTOMER Drawing
sheet	revision				
index	sheet				

form: ArrayMlic 1 2 3 4

PRODUCT NUMBER
SEE TABLE

1 | 2

3 |

4

NOTES:

1. MATERIAL:
HOUSING: LCP
CONTACT: COPPER ALLOY

PLATING:
CONTACT: (SEE TABLE)
SOLDER BALL: (SEE TABLE)
EUTECTIC SnPb OR LEAD FREE
95.5Sn/4Ag/0.5Cu
2. SOLDER BALLS WILL NOT BE PERFECT SPHERICAL SHAPE DUE TO REFLOW ATTACHMENT.
3. MATED HEIGHT EFFECTED BY CUSTOMER'S PCB PAD SIZE, PLATING, SOLDER REFLOW PROFILE, & SOLDER PASTE.
4. PLATING FOR INDICATED -2XX SERIES PRODUCT NUMBERS MEET THE REQUIREMENTS OF (GR-1217-CORE, CENTRAL OFFICE ENVIRONMENT, 25 YEAR LIFE EXPECTANCY).
5. PLATING FOR INDICATED -2XX SERIES PART NOS. IS AU OVER Ni WITH SPECIAL CONTACT GEOMETRY TO MEET REQUIREMENTS OF TELCORDIA GR-1217-CORE: CENTRAL OFFICE ENVIRONMENT.
6. KNIT LINE: SLIGHT VISIBLE MARKS (USUALLY A LINE) INDICATING THE DIRECTION AND MEETING POINT OF PLASTIC RESIN FLOW FRONTS TRAVELING AROUND ANY OBSTRUCTIONS TO THE RESIN FLOW VIA THE REQUIRED MOLD TOOLING.

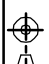
7. FOR PROPER APPLICATION FOLLOW FCI APPLICATION SPECIFICATION GS-20-033 LEAD FREE SOLDER BALLS WILL NOT SOLDER PROPERLY IN A LEADED SOLDER PROCESS DUE TO A HIGHER REFLOW TEMPERATURE. LEAD FREE PRODUCT IS THEREFORE NOT BACKWARDS COMPATIBLE WITH LEADED OR SOME SOLDERING APPLICATIONS. REFERENCE FCI APPLICATION SPECIFICATION.

8. THIS PRODUCT MEETS EUROPEAN UNION DIRECTIVES AND OTHER COUNTRY REGULATIONS AS DESCRIBED IN GS-47-0004 PRODUCT MEETING THIS DIRECTIVE IS IDENTIFIED IN THE LOT CODE NUMBER MARKED ON EACH PART BY HAVING AN "X" IN THE SEVENTH CHARACTER POSITION.

9. 84500-A02 AND -A02LF ARE CUSTOMER SPECIALS.

10. CURRENT COMPANY LOGO TO BE VISIBLE IN APPROXIMATE AREA SHOWN.

11. A  SYMBOL WILL BE NEXT TO ANY DIMENSION, NEW VIEW OR NOTE WHICH HAS BEEN MODIFIED WITH THE CURRENT DRAWING REVISION

mat'l code	SEE NOTE 1	surface ASME Y14.5	tolerance ASME Y14.5	projection	product family
lfr	eqn no	date	ASME Y14.5 tolerances unless otherwise specified		MEG-ARRAY
S		angles	X*3 XXX-B XXXX-051	MM Scale 2:1	title Omm PLUG ASSEMBLY 10 X 30 = 300 POSITIONS
		dr	T. BREWBAKER 20th-06-06		dwg no 84500
		dr	T. BREWBAKER 20th-06-06		sheet 5 of 5
		dr	T. BREWBAKER 20th-06-06		size A4
		dr	D. HORCHLER 20th-06-06		CUSTOMER Drawing
sheet	revision				
index	sheet				



Компания «ЭлектроПласт» предлагает заключение долгосрочных отношений при поставках импортных электронных компонентов на взаимовыгодных условиях!

Наши преимущества:

- Оперативные поставки широкого спектра электронных компонентов отечественного и импортного производства напрямую от производителей и с крупнейших мировых складов;
- Поставка более 17-ти миллионов наименований электронных компонентов;
- Поставка сложных, дефицитных, либо снятых с производства позиций;
- Оперативные сроки поставки под заказ (от 5 рабочих дней);
- Экспресс доставка в любую точку России;
- Техническая поддержка проекта, помощь в подборе аналогов, поставка прототипов;
- Система менеджмента качества сертифицирована по Международному стандарту ISO 9001;
- Лицензия ФСБ на осуществление работ с использованием сведений, составляющих государственную тайну;
- Поставка специализированных компонентов (Xilinx, Altera, Analog Devices, Intersil, Interpoint, Microsemi, Aeroflex, Peregrine, Syfer, Eurofarad, Texas Instrument, Miteq, Cobham, E2V, MA-COM, Hittite, Mini-Circuits, General Dynamics и др.);

Помимо этого, одним из направлений компании «ЭлектроПласт» является направление «Источники питания». Мы предлагаем Вам помощь Конструкторского отдела:

- Подбор оптимального решения, техническое обоснование при выборе компонента;
- Подбор аналогов;
- Консультации по применению компонента;
- Поставка образцов и прототипов;
- Техническая поддержка проекта;
- Защита от снятия компонента с производства.



Как с нами связаться

Телефон: 8 (812) 309 58 32 (многоканальный)

Факс: 8 (812) 320-02-42

Электронная почта: org@eplast1.ru

Адрес: 198099, г. Санкт-Петербург, ул. Калинина, дом 2, корпус 4, литера А.