

DS650/DS850

650 / 850 Watts

Distributed Power System

Distributed Power Bulk Front-End

Total Input Power: 650/850 Watts
+3.3 Vdc Stand-by Output

Wide Range Output Voltage: 90 - 264Vac
12, 24 and 48V



Special Features

- Active power factor correction
- EN61000-3-2 harmonic compliance
- Active AC inrush control
- 1U X 2U form factor
- 15.4 W/ in³
- 12 Vdc, 24 Vdc and 48 Vdc output
- +3.3 Vdc stand-by (5V standby - consult factory)
- No minimum load required
- Hot plug operation
- N + 1 redundant
- Internal OR'ing fets
- Active current sharing (10 - 100% load)
- Built-in cooling fans (40mm x 28mm)
- I²C communication interface bus
- EERPOM for FRU data
- Red/Green bi-color LED status
- Internal fan speed control
- Fan Fail Tach output signal
- INTEL, SSI Std. logic timing
- INTEL, SSI Std. FRU data format
- One year warranty

Safety

UL/cUL 60950 (UL Recognized)
NEMKO+ CB Report EN60950
EN60950
CE Mark
China CCC

Electrical Specifications

Input	
Input range	90 - 264 Vac (wide range)
Frequency	47 - 63 Hz, single phase AC
Inrush current	55 A maximum inrush current
Efficiency	> 82% typical at full load, high line
Conducted EMI	FCC Subpart J EN55022 Class B
Radiated EMI	FCC Subpart J EN55022 Class B
Power factor	0.99 typical
Leakage current	1.40 mA @ 240 Vac
Hold up time	20ms minimum
Output	
Main DC voltage	+12 V @ 52.5 A/70.0 A +24 V @ 26.3 A / 35.0 A +48 V @ 13.1 A / 17.5 A
Stand-By	+3.3 vsb @ 6 A (5 V @ 4 A available)
Adjustment range	Factory Set, no pot adjustments
Regulation	Main output; +5%/-5% +3.3 vsb; +5%/-5%
Over current	110% - 150% of nominal Latches off if overcurrent lasts over 1 second, otherwise it is auto recovery. +3.3 vsb, 9 A max (hiccup mode)
Over voltage	110% - 120% of nominal +3.3 vsb; 3.76 - 4.30 Vdc
Under voltage	75% - 90% of nominal
Turn-on delay	2 Second max, 5 - 50 mS, Monotonic Rise
Main output rise time	5 - 50 mS, Monotonic Rise



Logic Control	
PS_SEATED	TTL logic LOW if power supply is seated into system connector. This is a short pin. A logic HIGH if the PSU is removed.
PWR GOOD	Active TTL HIGH when output is within regulation limits.
AC OK	A LOW logic level if the input voltage is within allowable limits. A TTL logic HIGH level, and a 5mS early warning signal before main output loss of regulation.
Temp OK	A TTL logic HIGH, when operating within allowable temperature range.
PS_INHIBIT/PS_KILL	This signal is connected to a short pin on the PSU When left open power supply operation will be inhibited. When the power supply is inserted into the system, this pin will be pull low by the system and turn the power supply on only after all other power supply pins have seated.

Environmental Specifications

Operating temperature:	-10° to 50°C ; 50% power derating at 70°C
Storage temperature:	-40°C to +85°C
Altitude, operating 10,000ft.	
Electromagnetic susceptibility / Input transients:	-EN61000-3-2, -3-3 -EN61000-4-2, 4.3, 4-4, -4-5, 4-11 Level -EN55024:1998
RoHS & lead-free compliant (no tantalum caps.)	
Humidity:	20 to 90% RH, non-condensing
Shock and vibration specifications	complies with Astec Std. Specifications, Q3205
MTBF (Demonstrated)	500K Hrs at full load, 40°C

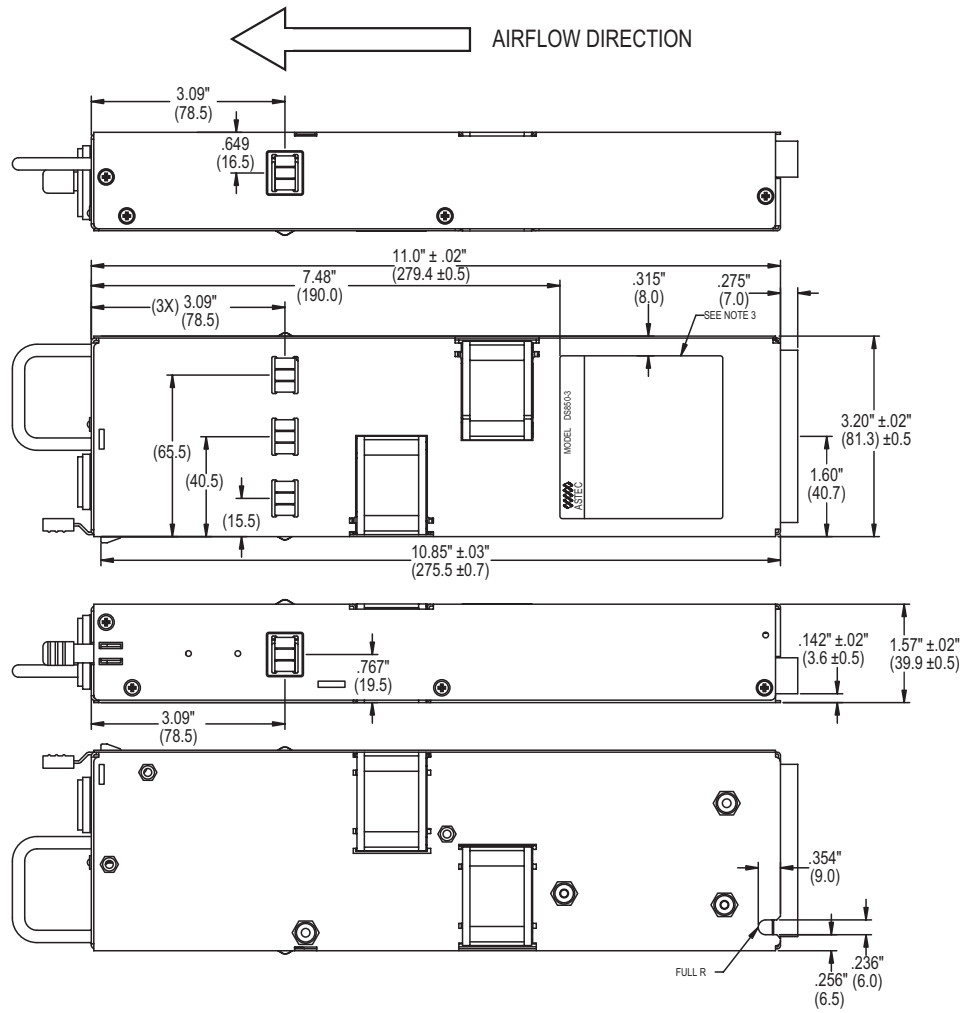
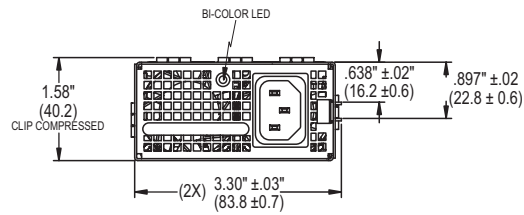
Ordering Information

Output	Nominal Output Voltage Set Point	Set Point Tolerance	Total Regulation	Minimum Current	Maximum Current	Output Ripple P/P
DS650-3	12.0 Vdc 3.3 vsb*	±0.2% ±1%	±5% ±5%	0A 0A	52.5 A 6.0 A	120 mV 50 mV
DS650-5	24.0 Vdc 3.3 vsb*	±0.2% ±1%	±5% ±5%	0A 0A	26.3 A 6.0 A	240 mV 50 mV
DS650-9	48.0 Vdc 3.3 vsb*	±0.2% ±1%	±5% ±5%	0A 0A	13.1 A 6.0 A	480 mV 50 mV
DS850-3	12.0 Vdc 3.3 vsb*	±0.2% ±1%	±5% ±5%	0A 0A	70.0 A 6.0 A	120 mV 50 mV
DS850-5	24.0 Vdc 3.3 vsb*	±0.2% ±1%	±5% ±5%	0A 0A	35.0 A 6.0 A	240 mV 50 mV
DS850-9	48.0 Vdc 3.3 vsb*	±0.2% ±1%	±5% ±5%	0A 0A	17.5 A 6.0 A	480 mV 50 mV

*For 5 vsb, consult marketing.

Mechanical Drawing

Power Supply Condition	LED Green/Amber
No AC power to all PSU	OFF
AC present/Standby output ON, Main output OFF	Blinking Green
Power supply DC outputs ON and OK	Solid Green
Main output failure (OCP, OVP, UVP)	Blinking Amber
Fan Fail, OTP, Standby output OCP/UVP	Solid Amber



DC Output Connector Pinout Assignment

Male connector as viewed from the rear of the supply:

D1	D2	D3	D4	D5	D6						
C1	C2	C3	C4	C5	C6	PB1	PB2	PB3	PB4	PB5	PB6
B1	B2	B3	B4	B5	B6						
A1	A2	A3	A4	A5	A6						

P1 - Power Supply Side

1. FCI Power Blade 51721 series
51721-10002406AA

2. Molex Power Connector
SD-87667 series
87667-7002

Mating Connector (System side)

1. FCI Power Blade
51741-10002406CC
Strait Pins

2. FCI Power Blade
51761-10002406AA
Right Angle

Pin	Signal Name
PB 1	MAIN O/P RETURN
PB 2	MAIN O/P RETURN
PB 3	MAIN O/P RETURN
PB 4	+ MAIN O/P
PB 5	+ MAIN O/P
PB 6	+ MAIN O/P
A1	PS_ON
A2	MAIN O/P V RMT SENSE RETURN
A3	TEMP_OK
A4	PS_SEATED (Power Supply Seated)
A5	+3V3 STAND-BY
A6	+3V3SB RETURN
B1	AC_OK (AC Input Present)
B2	MAIN O/P RMT SENSE
B3	MAIN O/P CURRENT SHARE
B4	PS_INHIBIT
B5	+3V3 STAND-BY
B6	+3V3SB RETURN
C1	SDA (I2C Data Signal)
C2	SCL (I2C Clock Signal)*
C3	POWER GOOD
C4	FAN FAIL (Fan Fail Signal)
C5	+3V3 STAND-BY
C6	+3V3SB RETURN
D1	A0 (I2C Address BIT 0 Signal)
D2	A1 (I2C Address BIT 1 Signal)
D3	S_INT (Alarm)
D4	+3V3 STAND-BY RMT SENSE
D5	+3V3 STAND-BY
D6	+3V3SB RETURN

*Supports I²C standard mode (100 kHz) only

Americas

5810 Van Allen Way
Carlsbad, CA 92008
USA
Telephone: +1 760 930 4600
Facsimile: +1 760 930 0698

Europe (UK)

Waterfront Business Park
Merry Hill, Dudley
West Midlands, DY5 1LX
United Kingdom
Telephone: +44 (0) 1384 842 211
Facsimile: +44 (0) 1384 843 355

Asia (HK)

14/F, Lu Plaza
2 Wing Yip Street
Kwun Tong, Kowloon
Hong Kong
Telephone: +852 2176 3333
Facsimile: +852 2176 3888

For global contact, visit:

www.Emerson.com/EmbeddedPower
techsupport.embeddedpower@emerson.com

While every precaution has been taken to ensure accuracy and completeness in this literature, Emerson Network Power assumes no responsibility, and disclaims all liability for damages resulting from use of this information or for any errors or omissions.

Emerson Network Power.
The global leader in enabling
business-critical continuity.

- AC Power
- Connectivity
- DC Power
- Embedded Computing
- **Embedded Power**
- Monitoring
- Outside Plant
- Power Switching & Controls
- Precision Cooling
- Racks & Integrated Cabinets
- Services
- Surge Protection

EmersonNetworkPower.com

Emerson Network Power and the Emerson Network Power logo are trademarks and service marks of Emerson Electric Co.
©2011 Emerson Electric Co.



Компания «ЭлектроПласт» предлагает заключение долгосрочных отношений при поставках импортных электронных компонентов на взаимовыгодных условиях!

Наши преимущества:

- Оперативные поставки широкого спектра электронных компонентов отечественного и импортного производства напрямую от производителей и с крупнейших мировых складов;
- Поставка более 17-ти миллионов наименований электронных компонентов;
- Поставка сложных, дефицитных, либо снятых с производства позиций;
- Оперативные сроки поставки под заказ (от 5 рабочих дней);
- Экспресс доставка в любую точку России;
- Техническая поддержка проекта, помощь в подборе аналогов, поставка прототипов;
- Система менеджмента качества сертифицирована по Международному стандарту ISO 9001;
- Лицензия ФСБ на осуществление работ с использованием сведений, составляющих государственную тайну;
- Поставка специализированных компонентов (Xilinx, Altera, Analog Devices, Intersil, Interpoint, Microsemi, Aeroflex, Peregrine, Syfer, Eurofarad, Texas Instrument, Miteq, Cobham, E2V, MA-COM, Hittite, Mini-Circuits, General Dynamics и др.);

Помимо этого, одним из направлений компании «ЭлектроПласт» является направление «Источники питания». Мы предлагаем Вам помощь Конструкторского отдела:

- Подбор оптимального решения, техническое обоснование при выборе компонента;
- Подбор аналогов;
- Консультации по применению компонента;
- Поставка образцов и прототипов;
- Техническая поддержка проекта;
- Защита от снятия компонента с производства.



Как с нами связаться

Телефон: 8 (812) 309 58 32 (многоканальный)

Факс: 8 (812) 320-02-42

Электронная почта: org@eplast1.ru

Адрес: 198099, г. Санкт-Петербург, ул. Калинина, дом 2, корпус 4, литера А.