

# 6 POSITION SPEC Pak<sup>®</sup>

Sealed Power For Environmental Connections



Marine | Wind Power | Lighting | Transportation | Pumps | Ground Support  
Machine Tool | Industrial Automation | Motor | Solar Power | Harsh Environments



**APP**  
Anderson Power Products<sup>®</sup>

# Rugged and Sealed (IP68) Plugs and Receptacles

For Use with APP® Powerpole® Signal, Power & Ground Contacts & Housings

APP's SPEC Pak® Connector Series uses rugged and environmentally sealed (IP68) shells to protect existing APP® Powerpole® contacts and housings. Customer configured SPEC Pak® Connectors may be used anywhere a rugged and waterproof high-power interconnect with signal and ground capabilities is required such as in; mass transportation, off-road vehicles, factory automation, oil and petrochemical exploration, agricultural equipment, and many more.

The core APP® Powerpole® technology within the SPEC Pak® is proven reliable and cost effective. The broad selection of touch safe, color-coded Powerpole® housings with power, signal and ground contacts accept a broad range of wire gauges, #24 to #10 AWG (0.25 to 4.0 mm<sup>2</sup>), giving users thousands of flexible design solutions in a single interconnect.



**1 - Industry Standard Panel Cut Out**

(Same as 26482 & 5015 shell size 24)

**2 - IP68 Panel Mount Sealing Gasket**

**3 - Touch Safe Housings** (UL1977, Section 10.2)

**4 - IP68 Interfacial Sealing Gasket**

**5 - Latch** (top or bottom of plug or receptacle)

**6 - Power Contacts** (up to 45 amps)

**7 - Signal Contacts** (4 contacts per PPMX housing)

**8 - Uses Industry Standard Sealing Components**

(PG gland compatible - size 21)

**9 - First Mate / Last Break Ground Contacts**

**10 - Color Coded Housings to Match Wire Color**

**11 - UV & Chemical Resistant Ruggedized Shells**

**Additional Features Available on the Right Angle Include:**

**12 - Uses Industry Standard PG Gland**

(PG gland compatible - size 21 or 29)

**13 - Right Angle Backshell Lockable in 8 Directions for Cable Routing**

**14 - Integrated Strain Relief**

**15 - Ruggedized Right Angle Plug Shell**

# Specifications

## SPEC Pak® Shell / Components

### Electrical

|                                      |              |
|--------------------------------------|--------------|
| UL Voltage Rating (AC/DC)            | 600          |
| Dielectric Withstanding Voltage (AC) | 3000         |
| Operating Temperature (°C)           | -40° to 105° |
| (°F)                                 | -40° to 221° |
| Flammability Rating of SPEC Shells   | UL 94V-0     |

### Mechanical

|                                 |          |
|---------------------------------|----------|
| Shells / Latch Mating Cycles    | 1500 Min |
| Connect / Disconnect (lbf)      | 18 Max   |
| (N)                             | 80 Max   |
| IP Rating                       | IP68     |
| UL50 Sec 30 Sealing Requirement | Pass     |

### Material

|                            |               |
|----------------------------|---------------|
| Shells (Plug / Receptacle) | PBT           |
| Latch                      | Nylon         |
| Holder                     | Polycarbonate |

## PPMX (4800 Series) Powerpole® Signal Contact

### Ratings for SPEC Pak® Use

### Electrical

|                                |              |
|--------------------------------|--------------|
| UL Current Rating (Amperes)    | 7            |
| Voltage Rating (AC/DC)         | 300          |
| Contact Barrel Wire Size (AWG) | #20 to #24   |
| (mm <sup>2</sup> )             | 0.5 to 0.25  |
| Contact Retention Force (lbf)  | 12.0         |
| (N)                            | 53.0         |
| Insertion Force (lbf)          | 4.5 Max      |
| (N)                            | 20.0 Max     |
| Operating Temperature (°C)     | -20° to 105° |
| (°F)                           | -4° to 221°  |

### Mechanical

|                         |      |
|-------------------------|------|
| Mating Cycles (No load) | 1500 |
|-------------------------|------|

### Material

|                  |                       |
|------------------|-----------------------|
| Housing Material | PBT                   |
| Contact Material | Copper Alloy          |
| Contact Plating  | Gold, 50 Micro-inches |

NOTE: PPMX Contacts, up to 4 per housing

## Powerpole® Power (1327FP Series) & Ground (1827 Series) Contacts

### Ratings for SPEC Pak® Use

### Electrical

|   |              |
|---|--------------|
| UL Current Rating (Amperes)             | 15 to 45     |
| CSA (30°C Rise) (Amperes)               | 10 to 29     |
| Voltage Rating (AC/DC)                  | 600          |
| Contact Barrel Wire Size (AWG) - Power  | 20 to 10     |
| - Ground                                | 14 to 10     |
| (mm <sup>2</sup> ) - Power              | 0.5 to 4.0   |
| - Ground                                | 1.5 to 4.0   |
| Average Contact Resistance (micro-ohms) | 600          |
| Contact Retention Force (lbf)           | 25           |
| (N)                                     | 111          |
| Operating Temperature (°C)              | -20° to 105° |
| (°F)                                    | -4° to 221°  |
| Flammability Rating                     | UL94 V-0     |

### Mechanical

|  |                                 |
|--|---------------------------------|
| Mating Cycles                                    |                                 |
| No Load  |                                 |
| - Tin  | 1,500                           |
| - Silver   | 10,000                          |
| Under Load (Hot Plug 250 mating cycles @ 120V) * | 30A                             |
| (Hot Plug 250 mating cycles @ 72V) *             | 45A                             |
| Mechanical Shock (50 g)                          | Mil Standard<br>202 213 Cond. A |
| Vibration (10 g)                                 | Mil Standard<br>202 204 Cond. A |

### Material

|                                     |                  |
|-------------------------------------|------------------|
| Housing Material                    | Polycarbonate    |
| Touch Safe (Power / Signal Housing) | UL1977 Sec. 10.2 |
| Contact Material                    | Copper           |
| Contact Plating                     | Tin or Silver    |

\* Hot Plug testing completed with individual Powerpole® housings

NOTE: Agency approvals - TUV (contact customer service) / Patents



# Part Number Configurator

## PART NUMBER PLAN

| SPEC Pak® Series<br>(1 fixed character) | Shell Color<br>(1 character) | Shell Style<br>(1 character)   | Dash     | Shell Size<br>(mm) (3 characters)  | Insert Arrangement<br>(3 characters)     |
|---|------------------------------|--|----------|--|--|
| <b>S</b>                                | <b>K</b>                     | <b>2</b>   | <b>-</b> | <b>053</b>   | <b>B06</b>                               |
| S = SPEC Pak® Series                    | K = Black                    | 2 = Panel Mount Receptacle<br>6 = Straight Plug<br>8 = Right Angle Plug<br>9 = Cover |          | 053 = 53 mm - 6 Pole Shell<br>A53 = 53 mm - 6 Pole Right Angle Shell, PG 21<br>B53 = 53 mm - 6 Pole Right Angle Shell, PG 29 | B06 = PP15/45 Housing (any type), 6 Pole |

### PLUG KIT



### RIGHT ANGLE PLUG KIT



### PANEL MOUNT RECEPTACLE KIT



### RECEPTACLE COVER KIT



**NOTE:**

- Mounting hardware (4 each - M3.5 or #6 screws) not included
- Recommended torque for mounting hardware is 3½ to 5 in-lbf (0.4 to 0.56 Nm)

## KIT ORDERING INFORMATION

### SPEC Pak® Kits

| Part Number | Description   |
|-------------|---|
| SK6-053B06  | Plug kit<br>- Plug shell (includes interfacial sealing gasket)<br>- Powerpole® holder for plug<br>- Retaining pin   |
| SK8-A53B06  | Right angle plug kit for PG 21<br>- Right angle backshell for PG 21<br>- Locking nut<br>- O-ring<br>- Plug shell<br>- Retaining pin<br>- Powerpole® holder for plug |
| SK8-B53B06  | Right angle plug kit for PG 29<br>- Right angle backshell for PG 29<br>- Locking nut<br>- O-ring<br>- Plug shell<br>- Retaining pin<br>- Powerpole® holder for plug |

### SPEC Pak® Kits

| Part Number | Description   |
|-------------|---|
| SK2-053B06  | Receptacle kit<br>- Panel mount gasket for receptacle<br>- Receptacle shell with latch<br>- Retention pin<br>- Powerpole® holder for receptacle |
| SK9-053     | Cover kit (receptacle only)<br>- Protective sealing (IP68) cover for receptacle with lanyard  |

### Component Replacement Parts

| Part Number | Description                       |
|-------------|-----------------------------------|
| 114765P1    | Panel mount gasket for receptacle |
| 2-8658P1    | 6 position latch                  |
| 2-8654P1    | Right angle locking nut           |
| 114915P2    | Right angle O-ring                |

## PART NUMBER PLAN



### Part Numbering Notes:

- 1) To order SPEC Pak® "Shell Kits Only" (no internal Powerpole® housings or contacts), use part numbering on page 4 only. **Plug Shell Kit Example: SK6-053B06** Powerpole® housings, contacts and wire protection may be ordered separately, see pages 6, 7 and 10 for information.
- 2) To order complete standard configured SPEC Pak® connector kits (including internal Powerpole® housings and contacts) use Part Number Plan across the top of pages 4 and 5. **Standard SPEC Pak® Plug Connector Kit Configuration Example: SK6-053B06PS01-D02**
- 3) To order a custom configuration which is not listed on page 8 and 9, use APP® custom part number configurator on the APP® website, [www.andersonpower.com](http://www.andersonpower.com), or contact factory.

\* Custom configurations may not be UL Recognized.



# Wire Protection - PG Gland

## SPECIFICATIONS

### Material (Push-in Conduit)

|        |          |
|--------|----------|
| Shell  | Nylon PA |
| Gasket | TPE      |
| Color  | Black    |

### Mechanical

|                |                                 |
|----------------|---------------------------------|
| Operating Temp | -30°C to 100°C (-22°F to 212°F) |
| IP Rating      | IP68                            |
| Thread Type    | PG                              |

### Material (All Others)

|        |                         |
|--------|-------------------------|
| Shell  | Nylon PA 66 (UL94 V-2)* |
| Gasket | EPDM                    |
| Color  | Black                   |

### Mechanical

|                |                                 |
|----------------|---------------------------------|
| Operating Temp | -40°C to 105°C (-40°F to 221°F) |
| IP Rating      | IP68                            |
| UV Rating      | Equivalent to UL746C F1         |
| Thread Type    | PG                              |

### Torque Requirements

Cable Gland Body to Plug Housing  
- Hand tighten until snug, tighten additional 1/8 - 1/4 turn with wrench

Sealing Nut to Cable  
- Hand tighten until snug, tighten additional 1/2 - 3/4 turn with wrench



\* Contact factory for UL94 V-0 material

NOTE: Only UL listed cable glands are UL recognized components when used with SPEC Pak® connector(s).

## STRAIGHT PLASTIC SHORT THREAD TYPE - STD PACK 50 / UL LISTED

| Straight Gland Kit |            |  |               |                 |                                     |                         |                             | Right Angle Gland Kit    |                           |                              |  |
|--------------------|------------|--|---------------|-----------------|-------------------------------------|-------------------------|-----------------------------|--------------------------|---------------------------|------------------------------|--|
| APP® P/N           | APP® P/N   | Wire Protection Designation (4 Characters) | PG Gland Size | Number of Holes | Cable Range Wire Outer Dia. mm (in) | Thread O. D. C1 mm (in) | Panel Mounting Hole mm (in) | Thread Length C2 mm (in) | Wrench Size Lock Nut (mm) | Wrench Size Sealing Nut (mm) |  |
| Right Angle        | Straight   |  |               |                 |                                     |                         |                             |                          |                           |                              |  |
| RPS1P21-16X        | PS1P21-16X | PS01                                       | 21            | 1               | 16.2 - 10.5 (0.64 - 0.41)           | 28.3 (1.11)             | 28.3 - 28.7 (1.11 - 1.13)   | 12 (0.47)                | 36                        | 33                           |  |
| RPS1P21-18X        | PS1P21-18X | PS02                                       | 21            | 1               | 18.5 - 13 (0.73 - 0.51)             | 28.3 (1.11)             | 28.3 - 28.7 (1.11 - 1.13)   | 12 (0.47)                | 36                        | 33                           |  |
| RPS1P29-22X        | N/A        | PS11                                       | 29            | 1               | 22 - 16 (0.86 - 0.63)               | 37 (1.46)               | 37 - 37.4 (1.46 - 1.47)     | 12 (0.47)                | 46                        | 42                           |  |
| RPS1P29-25X        | N/A        | PS12                                       | 29            | 1               | 25 - 18 (0.98 - 0.71)               | 37 (1.46)               | 37 - 37.4 (1.46 - 1.47)     | 12 (0.47)                | 46                        | 42                           |  |

## STRAIGHT PLASTIC WITH FLEX SPRING - STD PACK 50 / UL LISTED

| APP® P/N   | Wire Protection Designation (4 Characters) | Cable Range Wire Outer Dia. mm (in) | Thread O. D. C1 mm (in) | Panel Mounting Hole mm (in) | Thread Length C2 mm (in) | Wrench Size Lock Nut (mm) | Wrench Size Sealing Nut (mm) |
|------------|--|-------------------------------------|-------------------------|-----------------------------|--------------------------|---------------------------|------------------------------|
| Straight   |  |                                     |                         |                             |                          |                           |                              |
| PF1P21-16X | PF01                                       | 15.8 - 10.5 (0.62 - 0.41)           | 28.3 (1.11)             | 28.3 - 28.7 (1.11 - 1.13)   | 12 (0.47)                | 36                        | 33                           |

## LOCK NUT FOR PG 21 CABLE GLANDS

| APP® P/N | Wrench Size Lock Nut (mm) | Std. Pkg. Size |
|----------|---------------------------|----------------|
| 124G30   | 36                        | 50             |

## STRAIGHT PLASTIC MULTI-HOLE TYPE - STD PACK 50 / NOT UL LISTED



| APP® P/N   | APP® P/N  | Wire Protection Designation (4 Characters) | PG Gland Size | Number of Holes | Cable Range Wire Outer Dia. mm(in) | Thread O.D. C1 mm (in) | Panel Mounting Hole mm (in) | Thread Length C2 mm (in) | Wrench Size Lock Nut (mm) | Wrench Size Sealing Nut (mm) |
|------------|-----------|--|---------------|-----------------|------------------------------------|------------------------|-----------------------------|--------------------------|---------------------------|------------------------------|
| RPS2P21-5X | PS2P21-5X | PM21                                       | 21            | 2               | 5.2 - 3.6 (0.20 - 0.14)            | 28.3 (1.11)            | 28.3 - 28.7 (1.11 - 1.13)   | 12.5 (0.49)              | 36                        | 33                           |
| RPS2P21-6X | PS2P21-6X | PM22                                       | 21            | 2               | 6.5 - 5.1 (0.26 - 0.20)            | 28.3 (1.11)            | 28.3 - 28.7 (1.11 - 1.13)   | 12.5 (0.49)              | 36                        | 33                           |
| RPS2P21-8X | PS2P21-8X | PM23                                       | 21            | 2               | 8.7 - 6.4 (0.34 - 0.25)            | 28.3 (1.11)            | 28.3 - 28.7 (1.11 - 1.13)   | 12.5 (0.49)              | 36                        | 33                           |
| RPS3P21-5X | PS3P21-5X | PM31                                       | 21            | 3               | 5.2 - 3.6 (0.20 - 0.14)            | 28.3 (1.11)            | 28.3 - 28.7 (1.11 - 1.13)   | 12.5 (0.49)              | 36                        | 33                           |
| RPS3P21-6X | PS3P21-6X | PM32                                       | 21            | 3               | 6.2 - 4.8 (0.24 - 0.19)            | 28.3 (1.11)            | 28.3 - 28.7 (1.11 - 1.13)   | 12.5 (0.49)              | 36                        | 33                           |
| RPS3P21-8X | PS3P21-8X | PM33                                       | 21            | 3               | 8.0 - 6.2 (0.31 - 0.24)            | 28.3 (1.11)            | 28.3 - 28.7 (1.11 - 1.13)   | 12.5 (0.49)              | 36                        | 33                           |
| RPS4P21-3X | PS4P21-3X | PM41                                       | 21            | 4               | 3.1 - 2.0 (0.12 - 0.08)            | 28.3 (1.11)            | 28.3 - 28.7 (1.11 - 1.13)   | 12.5 (0.49)              | 36                        | 33                           |
| RPS4P21-4X | PS4P21-4X | PM42                                       | 21            | 4               | 4.1 - 3.0 (0.16 - 0.12)            | 28.3 (1.11)            | 28.3 - 28.7 (1.11 - 1.13)   | 12.5 (0.49)              | 36                        | 33                           |
| RPS4P21-5X | PS4P21-5X | PM43                                       | 21            | 4               | 5.2 - 3.8 (0.20 - 0.15)            | 28.3 (1.11)            | 28.3 - 28.7 (1.11 - 1.13)   | 12.5 (0.49)              | 36                        | 33                           |
| RPS4P21-7X | PS4P21-7X | PM44                                       | 21            | 4               | 7.3 - 5.6 (0.29 - 0.22)            | 28.3 (1.11)            | 28.3 - 28.7 (1.11 - 1.13)   | 12.5 (0.49)              | 36                        | 33                           |
| RPS5P21-3X | PS5P21-3X | PM51                                       | 21            | 5               | 3.6 - 2.6 (0.14 - 0.10)            | 28.3 (1.11)            | 28.3 - 28.7 (1.11 - 1.13)   | 12.5 (0.49)              | 36                        | 33                           |
| RPS5P21-4X | PS5P21-4X | PM52                                       | 21            | 5               | 4.6 - 3.6 (0.18 - 0.14)            | 28.3 (1.11)            | 28.3 - 28.7 (1.11 - 1.13)   | 12.5 (0.49)              | 36                        | 33                           |
| RPS5P21-6X | PS5P21-6X | PM53                                       | 21            | 5               | 6.0 - 4.6 (0.24 - 0.18)            | 28.3 (1.11)            | 28.3 - 28.7 (1.11 - 1.13)   | 12.5 (0.49)              | 36                        | 33                           |
| RPS6P21-3X | PS6P21-3X | PM61                                       | 21            | 6               | 3.6 - 2.6 (0.14 - 0.10)            | 28.3 (1.11)            | 28.3 - 28.7 (1.11 - 1.13)   | 12.5 (0.49)              | 36                        | 33                           |
| RPS6P21-5X | PS6P21-5X | PM62                                       | 21            | 6               | 5.2 - 3.6 (0.20 - 0.14)            | 28.3 (1.11)            | 28.3 - 28.7 (1.11 - 1.13)   | 12.5 (0.49)              | 36                        | 33                           |

## STRAIGHT CONDUIT ADAPTER THREAD TYPE - STD PACK 50 / NOT UL LISTED



| APP® P/N   | Wire Protection Designation (4 Characters) | Max. Joint F1 mm (in) | Thread O.D. C1 mm (in) | Panel Mounting Hole mm (in) | Thread Length C2 mm (in) | Wrench Size Lock Nut (mm) | APP® Conduit P/N | Conduit O. D. |
|------------|--|-----------------------|------------------------|-----------------------------|--------------------------|---------------------------|------------------|---------------|
| CT1P21-21X | CT02                                       | 22.0 (0.87)           | 28.3 (1.11)            | 28.3 - 28.7 (1.11 - 1.13)   | 12 (0.47)                | 36                        | NGN - 17B        | 21.2 (0.83)   |
| CT1P21-26X | CT03                                       | 26.5 (1.04)           | 28.3 (1.11)            | 28.3 - 28.7 (1.11 - 1.13)   | 12 (0.47)                | 36                        | NGN - 22B        | 26.2 (1.03)   |
| CT1P21-28X | CT04                                       | 28.5 (1.12)           | 28.3 (1.11)            | 28.3 - 28.7 (1.11 - 1.13)   | 12 (0.47)                | 36                        | NGN - 23B        | 28.5 (1.12)   |

## STRAIGHT CONDUIT PUSH-IN TYPE - STD PACK 50 / NOT UL LISTED



| APP® P/N  | Wire Protection Designation (4 Characters) | Thread O.D. C1 mm (in) | Panel Mounting Hole mm (in) | Thread Length C2 mm (in) | Wrench Size Lock Nut (mm) | APP® Conduit P/N | Conduit O. D. |
|-----------|--|------------------------|-----------------------------|--------------------------|---------------------------|------------------|---------------|
| CAP21-28X | CA04                                       | 28.3 (1.11)            | 28.3 - 28.7 (1.11 - 1.13)   | 12 (0.5)                 | 36                        | NGN - 23B        | 28.5 (1.12)   |

## CORRUGATED NYLON PLASTIC TUBING

| APP® P/N  | Conduit I. D. mm (in) | Conduit O. D. mm (in) | Conduit Size | Trade Size (mm) | Std. Pkg. Meters (Feet) |
|-----------|-----------------------|-----------------------|--------------|-----------------|-------------------------|
| NGN - 17B | 16.7 (0.66)           | 21.2 (0.83)           | 1/2"         | OD21.2          | 50 (164)                |
| NGN - 22B | 21.2 (0.83)           | 26.2 (1.03)           | -            | -               | 50 (164)                |
| NGN - 23B | 21.7 (0.85)           | 28.5 (1.12)           | 3/4"         | OD28.5          | 50 (164)                |

## TUBING CUTTER



| APP® P/N | Description                      | Range (mm)    |
|----------|----------------------------------|---------------|
| TM0002   | Corrugated Plastic Tubing Cutter | Up to OD 34.5 |

# Standard Housing Arrangements & Contacts

## HOUSING ARRANGEMENTS FOR POWER, SIGNAL & GROUND CONNECTORS

ARRANGEMENTS REPRESENT FRONT VIEW OF RECEPTACLE

Custom configurations may be created using APP's part number configurator at [www.andersonpower.com](http://www.andersonpower.com)

E = Empty      1327 Series = Power      1827 Series = Ground      4800 Series = Signal

**0** Custom Configuration

AC Single Phase

|          |          |        |
|----------|----------|--------|
| <b>A</b> | 1327G6FP | E      |
|          | E        | 1827G1 |
|          | 1327G7FP | E      |

AC 3 Phase, 3 Wire

|          |          |        |
|----------|----------|--------|
| <b>B</b> | 1327G6FP | E      |
|          | 1327G7FP | 1827G1 |
|          | 1327FP   | E      |

DC 2 Circuit, 4 Wire

|          |          |          |
|----------|----------|----------|
| <b>C</b> | 1327G6FP | 1327G6FP |
|          | E        | E        |
|          | 1327FP   | 1327FP   |

DC 2 Circuit, 4 Wire  
With Ground

|          |          |          |
|----------|----------|----------|
| <b>D</b> | 1327G6FP | 1327G6FP |
|          | E        | 1827G1   |
|          | 1327FP   | 1327FP   |

AC 3 Phase, 4 Wire

|          |          |          |
|----------|----------|----------|
| <b>E</b> | 1327G6FP | 1327G8FP |
|          | 1327G7FP | 1827G1   |
|          | 1327FP   | E        |

AC 3 Phase, 5 Wire

|          |          |           |
|----------|----------|-----------|
| <b>F</b> | 1327G6FP | 1327G8FP  |
|          | 1327G7FP | 1827G1    |
|          | 1327FP   | 1327G16FP |

DC 2 Circuit, 6 Wire

|          |        |          |
|----------|--------|----------|
| <b>G</b> | 1327FP | 1327G6FP |
|          | 1327FP | 1327G6FP |
|          | 1327FP | 1327G6FP |

DC 2 Circuit, 4 Wire  
With 8 Signal

|          |          |          |
|----------|----------|----------|
| <b>H</b> | 1327G6FP | 1327G6FP |
|          | 4827G6   | 4827G6   |
|          | 1327FP   | 1327FP   |

AC Single Phase With 4 Signal

|          |          |        |
|----------|----------|--------|
| <b>J</b> | 1327G6FP | E      |
|          | E        | 1827G1 |
|          | 1327G7FP | 4827G6 |

AC 3 Phase, 3 Wire  
With 4 Signal

|          |          |        |
|----------|----------|--------|
| <b>K</b> | 1327G6FP | E      |
|          | 1327G7FP | 1827G1 |
|          | 1327FP   | 4827G6 |

DC 2 Circuit, 4 Wire  
With 4 Signal

|          |          |          |
|----------|----------|----------|
| <b>L</b> | 1327G6FP | 1327G6FP |
|          | E        | 4827G6   |
|          | 1327FP   | 1327FP   |

AC 3 Phase, 3 Wire  
With 8 Signal

|          |          |          |
|----------|----------|----------|
| <b>M</b> | 1327FP   | 1327G7FP |
|          | 4827G6   | 4827G6   |
|          | 1327G6FP | 1827G1   |

DC 2 Circuit, 4 Wire  
With Ground & 4 Signal

|          |          |          |
|----------|----------|----------|
| <b>N</b> | 1327G6FP | 1327G6FP |
|          | 4827G6   | 1827G1   |
|          | 1327FP   | 1327FP   |

AC 3 Phase, 4 Wire  
With 4 Signal

|          |          |          |
|----------|----------|----------|
| <b>P</b> | 1327G6FP | 1327G8FP |
|          | 1327G7FP | 1827G1   |
|          | 1327FP   | 4827G6   |

All Signal

|          |        |        |
|----------|--------|--------|
| <b>X</b> | 4827G6 | 4827G6 |
|          | 4827G6 | 4827G6 |
|          | 4827G6 | 4827G6 |



# CONTINUOUS CURRENT RATINGS - POWER CONTACT CODE SELECTION

| Contact Code | Power Contacts                | Housing Configuration | Wire Size / Current Rating |       |       |       |       |      |
|--------------|-------------------------------|-----------------------|----------------------------|-------|-------|-------|-------|------|
|              |                               |                       | #10                        | #12   | #14   | #16   | #18   | #20  |
| 00           | Contacts Purchased Separately |                       |                            |       |       |       |       |      |
| 01           | 261G2                         | A - C                 | 29/40                      | 20/33 | 15/23 | —     | —     | —    |
|              |                               | D - G                 | 24/36                      | 20/25 | 15/21 | —     | —     | —    |
|              |                               | H - P                 | 29/40                      | 20/33 | 15/22 | —     | —     | —    |
| 02           | 200G1L                        | A - C                 | 27/37                      | 20/32 | 15/22 | —     | —     | —    |
|              |                               | D - G                 | 22/33                      | 18/25 | 15/20 | —     | —     | —    |
|              |                               | H - P                 | 27/37                      | 20/32 | 15/22 | —     | —     | —    |
| 03           | 261G1                         | A - C                 | —                          | 20/33 | 15/23 | 12/18 | —     | —    |
|              |                               | D - G                 | —                          | 20/25 | 15/21 | 12/18 | —     | —    |
|              |                               | H - P                 | —                          | 20/33 | 15/22 | 12/18 | —     | —    |
| 04           | 1331                          | A - C                 | —                          | 17/25 | 15/25 | 13/20 | —     | —    |
|              |                               | D - G                 | —                          | 15/25 | 15/22 | 13/18 | —     | —    |
|              |                               | H - P                 | —                          | 17/25 | 15/20 | 13/20 | —     | —    |
| 05           | 262G1                         | A - C                 | —                          | —     | —     | 12/18 | 10/15 | 7/10 |
|              |                               | D - G                 | —                          | —     | —     | 12/18 | 8/13  | 6/9  |
|              |                               | H - P                 | —                          | —     | —     | 12/18 | 10/15 | 7/10 |
| 06           | 1332                          | A - C                 | —                          | —     | —     | 13/20 | 9/14  | 6/9  |
|              |                               | D - G                 | —                          | —     | —     | 13/18 | 7/12  | 5/8  |
|              |                               | H - P                 | —                          | —     | —     | 13/20 | 9/14  | 6/9  |

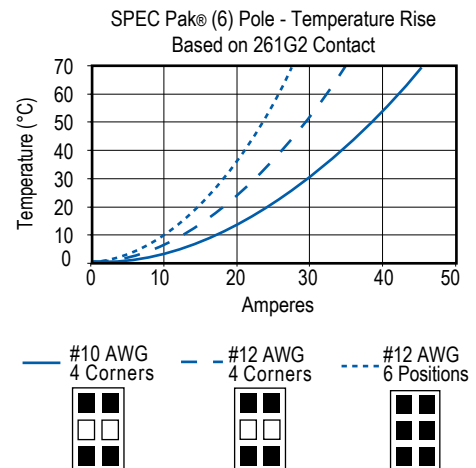
**NOTES:**

- Current ratings:
  - First number represents current rating per pole for 30°C temperature rise (29 / 40)
  - Second number is the maximum recommended current per pole based on a 25°C ambient (29 / 40)
- Configuration H - P based on signal contacts crimped to #20 AWG wire and carrying 1 amp
- ☐ Denotes wire size not appropriate for power contact
- Shaded boxes ☐ are c  File No. E26226 pending.
- 1827G1 housing with 1830G1 or 1830G2 ground contact depending on primary contacts (see chart above). All signal housing kits (4850G6) come with two 4802G3 and two 4802G3 contacts.

## HOLDER LOCATIONS (VIEWS)



## TEMPERATURE CHART



# Individual Components

## POWERPOLE® HOUSINGS & CONTACTS

### Fingerproof PP15/45 Housing Only

Package Quantity:

Standard, 100 pieces - Bulk, 1,000 pieces

| Standard Part Number | Bulk Part Number | Description    |
|----------------------|------------------|----------------|
| 1327FP               | 1327FP-BK        | Red Housing    |
| 1327G5FP             | 1327G5FP-BK      | Green Housing  |
| 1327G6FP             | 1327G6FP-BK      | Black Housing  |
| 1327G7FP             | 1327G7FP-BK      | White Housing  |
| 1327G8FP             | 1327G8FP-BK      | Blue Housing   |
| 1327G16FP            | 1327G16FP-BK     | Yellow Housing |

### Standard PP 15/45 Housing Only

Package Quantity:

Standard, 100 pieces - Bulk, 1,000 pieces

| Standard Part Number | Bulk Part Number | Description    |
|----------------------|------------------|----------------|
| 1327                 | 1327-BK          | Red Housing    |
| 1327G5               | 1327G5-BK        | Green Housing  |
| 1327G6               | 1327G6-BK        | Black Housing  |
| 1327G7               | 1327G7-BK        | White Housing  |
| 1327G8               | 1327G8-BK        | Blue Housing   |
| 1327G16              | 1327G16-BK       | Yellow Housing |
| 1327G17              | 1327G17-BK       | Orange Housing |
| 1327G18              | 1327G18-BK       | Gray Housing   |
| 1327G21              | 1327G21-BK       | Brown Housing  |
| 1327G22              | 1327G22-BK       | Pink Housing   |
| 1327G23              | 1327G23-BK       | Purple Housing |

### Premate Ground PP15/45 Housing Only

Package Quantity:

Standard, 100 pieces - Bulk, 1,000 pieces

| Standard Part Number | Bulk Part Number | Description   |
|----------------------|------------------|---------------|
| 1827G1               | 1827G1-BK        | Green Housing |

### Premate Ground Contacts

Loose Piece

Package Quantity 100

| Part Number                                | Description                |
|--|----------------------------|
| #10 to #14 AWG (4 to 1.5 mm <sup>2</sup> ) |                            |
| 1830G1-LPBK                                | Singulated-LD-Tin Plate    |
| 1830G2-LPBK                                | Singulated-LD-Silver Plate |

Reel

Package Quantity 5,000

| Part Number                                | Description          |
|--|----------------------|
| #10 to #14 AWG (4 to 1.5 mm <sup>2</sup> ) |                      |
| 1830G1                                     | Reel-LD-Tin Plate    |
| 1830G2                                     | Reel-LD-Silver Plate |

### 15/45 Powerpole® Contacts

Loose Piece

Package Quantity:

Standard, 100 pieces - Bulk, 1,000 pieces

| Standard Part Number                         | Bulk Part Number | Description                        |
|--|------------------|------------------------------------|
| #16 to #20 AWG (1.0 to 0.5 mm <sup>2</sup> ) |                  |                                    |
| 1332   | 1332-BK          | Individual-LD-Silver Plate         |
| 262G1-LPBK                                   | -                | Singulated Reel-LD-Tin Plate       |
| 262G2-LPBK                                   | -                | Singulated Reel-LD-Silver Plate    |
| #12 to #16 AWG (2.5 to 1.0 mm <sup>2</sup> ) |                  |                                    |
| 1331   | 1331-BK          | Individual-LD-Silver Plate         |
| 261G1-LPBK                                   | -                | Singulated Reel-LD-Tin Plate       |
| #10 to #14 AWG (4 to 1.5 mm <sup>2</sup> )   |                  |                                    |
| 261G2-LPBK                                   | -                | Singulated Reel-LD-Tin Plate       |
| 261G3-LPBK                                   | -                | Singulated Reel-LD-Silver Plate    |
| 200G1L-LPBK                                  | -                | Superflex, Sing. Reel-LD-Tin Plate |

Reel - 15/45 Powerpole® Contacts

Package Quantity 5,000

| Part Number                                  | Description                  |
|--|------------------------------|
| #16 to #20 AWG (1.0 to 0.5 mm <sup>2</sup> ) |                              |
| 262G1  | Reel-LD-Tin Plate            |
| 262G2  | Reel-LD-Silver Plate         |
| #12 to #16 AWG (2.5 to 1.0 mm <sup>2</sup> ) |                              |
| 261G1  | Reel-LD-Tin Plate            |
| #10 to #14 AWG (4 to 1.5 mm <sup>2</sup> )   |                              |
| 261G2  | Reel-LD-Tin Plate            |
| 261G3  | Reel-LD-Silver Plate         |
| #10 to #14 AWG (6 to 1.5mm <sup>2</sup> )    |                              |
| 200G1L                                       | SuperFlex, Reel-LD-Tin Plate |

NOTE:

LD - Low Detent

For additional housing colors please contact customer service.

## CONTACT STYLES



## PPMX (4800 SERIES) HOUSING & CONTACTS

### PPMX Housing

#### Package Quantity

Standard, 25 pieces - Bulk, 1,000 pieces

| Standard Part Number | Bulk Part Number | Description             |
|----------------------|------------------|-------------------------|
| 4827G6               | 4827G6-BK        | Black two piece housing |

### PPMX Contacts

#### Package Quantity

Standard, 50 pieces - Bulk, 2,000 pieces

#### Loose Piece

#20 to #24 AWG (0.50 to 0.25 mm<sup>2</sup>)

| Standard Part Number | Bulk Part Number | Description                   |
|----------------------|------------------|-------------------------------|
| 4802G3               | 4802G3-BK        | Socket, Gold, 50 Micro-inches |
| 4803G3               | 4803G3-BK        | Pin, Gold, 50 Micro-inches    |

### PPMX Housing & Contact Kits

#### Package Quantity

Standard, 100 pieces

1 Black two piece housing, 2 Male Contacts,  
2 Female Contacts

| Standard Part Number | Bulk Part Number | Description   |
|----------------------|------------------|---|
| 4850G6               | -                | 50 Micro-inches Gold Plated Contacts - Pin & Socket |

## PP15/45 POWERPOLE® HOUSING STYLES



## APPLICATION TOOLING - POWERPOLE® 15 / 45 CONTACTS

| Loose Piece Tin Part Number | Loose Piece Silver Part Number | Hand Tool or Pneumatic Tool |                | Reeled Tin Part Number | Reeled Silver Part Number | ATS Applicator |         |
|-----------------------------|--------------------------------|-----------------------------|----------------|------------------------|---------------------------|----------------|---------|
|                             |                                | Hand Tool                   | Pneumatic Tool |                        |                           |                |         |
| N/A                         | 1332                           | 1309G2 or 1309G8            | 1367G1         | N/A                    | N/A                       | N/A            |         |
| N/A                         | 1331                           |                             |                | N/A                    | N/A                       | N/A            |         |
| 262G1-LPBK                  | 262G2-LPBK                     |                             |                | N/A                    | N/A                       | 261G1          | 262G2   |
| 200G2L-LPBK                 | 200G4L-LPBK                    | 200G2L                      | 200G4L         |                        |                           | TBD            |         |
| 261G1-LPBK                  | 261G4-LPBK                     | 1309G3 or 1309G8            | 261G1          |                        |                           | 261G4          | 1385520 |
| 261G2-LPBK                  | 261G3-LPBK                     | 1309G6 or 1309G8            | 261G2          |                        |                           | 261G3          | 1385458 |
| 200G1L-LPBK                 | 200G3L-LPBK                    | 1309G6 or 1309G8            | 200G1L         |                        |                           | 200G3L         | 1385460 |
| 1830G1-LPBK                 | 1830G2-LPBK                    | 1309G6 or 1309G8            | 1830G1         |                        |                           | 1830G2         | 1385460 |

\* All Hand and Pneumatic Tools for use with Loose Piece contacts only. All reeled contacts can be ordered singulated, (Loose Piece) with the suffix "- LPBK"

\*\* 1309G8 is a hand tool kit- includes dies and locators to make up 1309G2, 1309G3, & 1309G6

## APPLICATION TOOLING - PPMX CONTACTS

| Contact Part Number | Mil Std. Hand Tool |                            |                      | Pneumatic Tool for Locator / Turret |
|---------------------|--------------------|----------------------------|----------------------|-------------------------------------|
|                     | APP® Hand Tool or  | Mil Std. Tool (APP Part #) | Positioner           |                                     |
| 4802G3              | PM1000G1           | M22520/1-01 (TM0001)       | No Mil Std. (TL0005) | TP0001                              |
| 4803G3              |                    |                            |                      |                                     |

# Dimensions

## PLUG 6 POSITION FOR PP15/45 HOUSINGS

**Top View**



**Front View**



**Side View**



**Mated Side View**

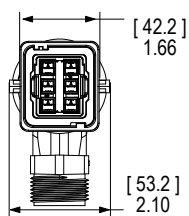


## RIGHT ANGLE PLUG 6 POSITION FOR PP15/45 - GLAND SIZE PG 21

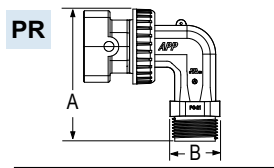
**Top View**



**Front View**



**Side View**



| PG Gland | - A -<br>mm | in.  | - B -<br>mm | in.  |
|----------|-------------|------|-------------|------|
| PG 21    | 104.7       | 4.12 | 36.4        | 1.43 |
| PG 29    | 105.5       | 4.15 | 47.4        | 1.86 |

**Mated Side View**



For PG 29 dimensions, please see APP website

## RECEPTACLE 6 POSITION FOR PP15/45 HOUSINGS

**Panel Cut Out**



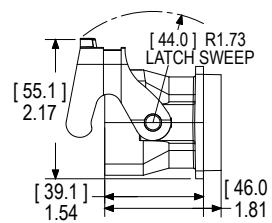
PANEL CUT OUT  $\varnothing$

(SAME AS 26482 & 5015 SHELL SIZE 24)

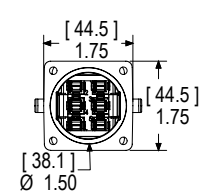
**Front View**



**Side View**



**Back View**

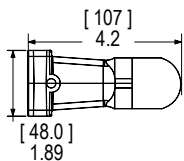


NOTE: Mounting hardware #6 screw / torque receptacle to panel 3/2 to 5 in-lbf (0.4 to 0.56 Nm)

## PG GLANDS

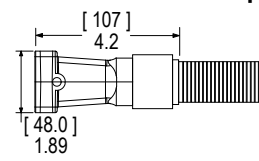
**PS**

**Plastic Short**



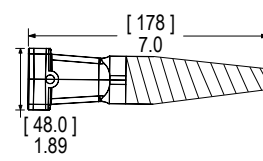
**CT**

**Thread Conduit Adapter**



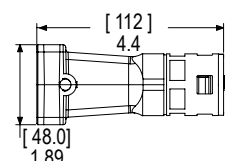
**PF**

**Plastic Flex PG**



**CA**

**Push-in Conduit Adapter**

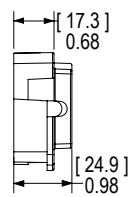


## RECEPTACLE COVER KIT

**Front View**



**Side View**



**Mated Side View**



All Data Subject To Change Without Notice

Patents

15052 DS-SPAK REV06

**HEADQUARTERS:** Anderson Power Products®, 13 Pratts Junction Road, Sterling, MA 01564-2305 USA T:978-422-3600 F:978-422-0128

**EUROPE:** Anderson Power Products® Ltd., Unit 3, Europa Court, Europa Boulevard, Westbrook, Warrington, Cheshire, WA5 7TN United Kingdom T: +44 (0) 1925 428390 F: +44 (0) 1925 520203

**ASIA / PACIFIC:** IDEAL Anderson Asia Pacific Ltd., Unit 922-928 Topsail Plaza, 11 On Sum Street, Shatin N.T., Hong Kong T: +(852) 2636 0836 F: +(852) 2635 9036

**CHINA:** IDEAL Anderson Technologies (Shenzhen) Ltd., Block A8 Tantou Western Industrial Park, Songgang Baoan District, Shenzhen, P.R. China 518105 T: +(86) 755 2768 2118 F: +(86) 755 2768 2218

**TAIWAN:** IDEAL Anderson Asia Pacific Ltd., Taiwan Branch, 4F-2, No.116, Dadun 20th St., Situn District, Taichung City 407, Taiwan (R.O.C.) T: +(886) 4 2310 6451 F: +(886) 4 2310 6460

[www.andersonpower.com](http://www.andersonpower.com)

# Mouser Electronics

Authorized Distributor

Click to View Pricing, Inventory, Delivery & Lifecycle Information:

## Anderson Power Products:

[114765P1](#) [B02047P1](#) [SK6-053B06PS02-B03](#) [SK6-053B06PS02-B04](#) [SK6-053B06PS02-C02](#) [SK6-053B06PS02-C03](#) [SK6-053B06PS02-D02](#) [SK6-053B06PS02-D04](#) [SK6-053B06PS02-D06](#) [SK6-053B06PS02-E01](#) [SK6-053B06PS02-E04](#) [SK6-053B06PS02-F06](#) [SK6-053B06PS02-G01](#) [SK6-053B06PS02-G03](#) [SK6-053B06PS02-G04](#) [SK2-053B060000-G06](#) [SK2-053B060000-G01](#) [SK2-053B060000-G04](#) [SK2-053B060000-H01](#) [SK6-053B060000-A03](#) [SK6-053B060000-A04](#) [SK6-053B060000-A06](#) [SK6-053B060000-B02](#) [SK6-053B060000-C01](#) [SK6-053B06CT04-A03](#) [SK6-053B06CT04-B01](#) [SK6-053B06CT04-B03](#) [SK6-053B06CT04-C01](#) [SK6-053B06CT04-C02](#) [SK6-053B06CT04-D01](#) [SK6-053B06CT04-D04](#) [SK6-053B06CT04-D02](#) [SK6-053B06CT04-E03](#) [SK6-053B06CT04-E04](#) [SK6-053B06CT04-G03](#) [SK6-053B06CT04-G04](#) [SK6-053B06PF01-A04](#) [SK6-053B06PF01-B01](#) [SK6-053B06PF01-C01](#) [SK6-053B06PF01-D01](#) [SK6-053B06PF01-D02](#) [SK6-053B06PF01-E04](#) [SK6-053B06PF01-E06](#) [SK6-053B06PF01-F01](#) [SK6-053B06PF01-F02](#) [SK6-053B06PF01-F03](#) [SK6-053B06PF01-F04](#) [SK6-053B06PF01-G02](#) [SK6-053B06PF01-G03](#) [SK6-053B06PF01-G04](#) [SK6-053B06PF01-G06](#) [SK6-053B06PS02-A01](#) [SK6-053B06PS02-A03](#) [SK6-053B06PS02-A06](#) [SK6-053B06PS02-B02](#) [SK6-053B060000-B03](#) [SK6-053B060000-B04](#) [SK6-053B060000-B06](#) [SK6-053B060000-C02](#) [SK2-053B060000-N02](#) [SK2-053B060000-A02](#) [SK2-053B060000-A03](#) [SK2-053B060000-A06](#) [SK2-053B060000-B01](#) [SK2-053B060000-B04](#) [SK2-053B060000-C02](#) [SK2-053B060000-C03](#) [SK2-053B060000-C04](#) [SK2-053B060000-D01](#) [SK2-053B060000-E03](#) [SK2-053B060000-E04](#) [SK2-053B060000-F01](#) [SK6-053B060000-C04](#) [SK6-053B060000-C06](#) [SK6-053B060000-D01](#) [SK6-053B060000-D02](#) [SK6-053B060000-D04](#) [SK6-053B060000-E01](#) [SK6-053B060000-E02](#) [SK6-053B060000-E03](#) [SK6-053B060000-E06](#) [SK6-053B060000-F02](#) [SK6-053B060000-F03](#) [SK6-053B060000-F04](#) [SK6-053B060000-F06](#) [SK6-053B060000-G02](#) [SK6-053B060000-G03](#) [SK2-053B060000-F06](#) [SK2-053B060000-G02](#) [SK2-053B060000-G03](#) [SK6-053B060000-A01](#) [SK6-053B060000-A02](#) [SK6-053B060000-B01](#) [SK6-053B06PF01-E02](#) [SK6-053B06PF01-E03](#) [SK6-053B06PF01-F06](#) [SK6-053B06PF01-G01](#) [SK6-053B06PF01-H01](#) [SK6-053B06PS02-A02](#) [SK6-053B06PS02-A04](#)





Компания «ЭлектроПласт» предлагает заключение долгосрочных отношений при поставках импортных электронных компонентов на взаимовыгодных условиях!

Наши преимущества:

- Оперативные поставки широкого спектра электронных компонентов отечественного и импортного производства напрямую от производителей и с крупнейших мировых складов;
- Поставка более 17-ти миллионов наименований электронных компонентов;
- Поставка сложных, дефицитных, либо снятых с производства позиций;
- Оперативные сроки поставки под заказ (от 5 рабочих дней);
- Экспресс доставка в любую точку России;
- Техническая поддержка проекта, помощь в подборе аналогов, поставка прототипов;
- Система менеджмента качества сертифицирована по Международному стандарту ISO 9001;
- Лицензия ФСБ на осуществление работ с использованием сведений, составляющих государственную тайну;
- Поставка специализированных компонентов (Xilinx, Altera, Analog Devices, Intersil, Interpoint, Microsemi, Aeroflex, Peregrine, Syfer, Eurofarad, Texas Instrument, Miteq, Cobham, E2V, MA-COM, Hittite, Mini-Circuits, General Dynamics и др.);

Помимо этого, одним из направлений компании «ЭлектроПласт» является направление «Источники питания». Мы предлагаем Вам помощь Конструкторского отдела:

- Подбор оптимального решения, техническое обоснование при выборе компонента;
- Подбор аналогов;
- Консультации по применению компонента;
- Поставка образцов и прототипов;
- Техническая поддержка проекта;
- Защита от снятия компонента с производства.



#### Как с нами связаться

**Телефон:** 8 (812) 309 58 32 (многоканальный)

**Факс:** 8 (812) 320-02-42

**Электронная почта:** [org@eplast1.ru](mailto:org@eplast1.ru)

**Адрес:** 198099, г. Санкт-Петербург, ул. Калинина, дом 2, корпус 4, литера А.