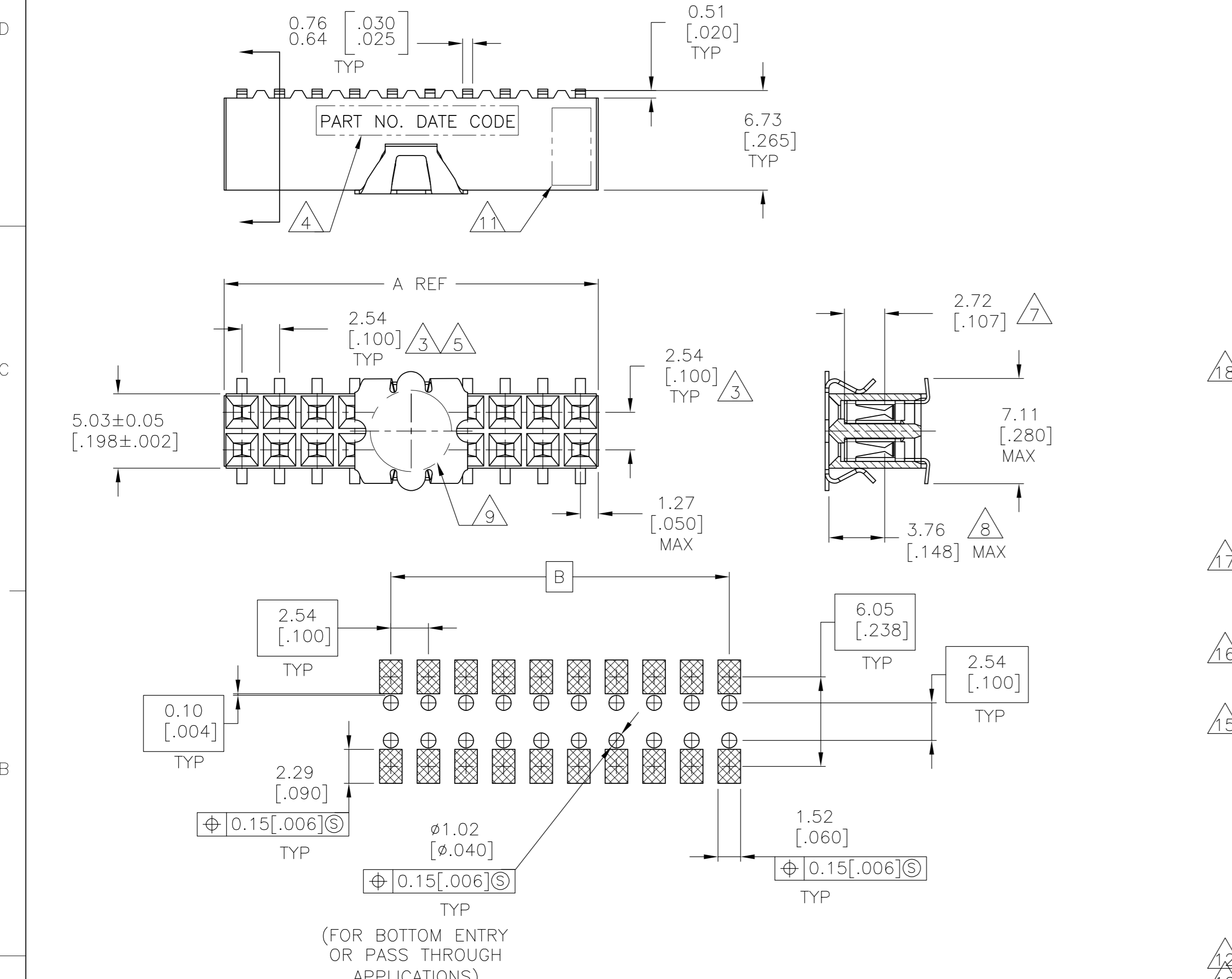


THIS DRAWING IS UNPUBLISHED. RELEASED FOR PUBLICATION  
 © COPYRIGHT - By - ALL RIGHTS RESERVED.

LOC	DIST	REVISIONS					
		P	LTR	DESCRIPTION	DATE	DWN	APVD
AD	00	J9		REVISED PER ECO-13-005565	01APR13	KH	JO

FOR PART NUMBERS 5-147105-1 THRU 9-147105-0  
 SEE SHEET 2



RECOMMENDED PC BOARD LAYOUT  
 0.20[.008] THICK STENCIL

FINISH	EIA TAPE WIDTH	B	A	NO. OF POSN.	PART NUMBER
1	B	A	B	120mm	99.06 [3.900] 101.60 [4.000] 80 4-147105-0
				96.52 [3.800] 99.06 [3.900] 78 3-147105-9	
				93.98 [3.700] 96.52 [3.800] 76 3-147105-8	
				91.44 [3.600] 93.98 [3.700] 74 3-147105-7	
				88.90 [3.500] 91.44 [3.600] 72 3-147105-6	
				86.36 [3.400] 88.90 [3.500] 70 3-147105-5	
				83.82 [3.300] 86.36 [3.400] 68 3-147105-4	
				81.28 [3.200] 83.82 [3.300] 66 3-147105-3	
				78.74 [3.100] 81.28 [3.200] 64 3-147105-2	
				76.20 [3.000] 78.74 [3.100] 62 3-147105-1	
				73.66 [2.900] 76.20 [3.000] 60 3-147105-0	
				71.12 [2.800] 73.66 [2.900] 58 2-147105-9	
				68.58 [2.700] 71.12 [2.800] 56 2-147105-8	
				66.04 [2.600] 68.58 [2.700] 54 2-147105-7	
				63.50 [2.500] 66.04 [2.600] 52 2-147105-6	
				60.96 [2.400] 63.50 [2.500] 50 2-147105-5	
				58.42 [2.300] 60.96 [2.400] 48 2-147105-4	
				55.88 [2.200] 58.42 [2.300] 46 2-147105-3	
				53.34 [2.100] 55.88 [2.200] 44 2-147105-2	
				50.80 [2.000] 53.34 [2.100] 42 2-147105-1	
				48.26 [1.900] 50.80 [2.000] 40 2-147105-0	
				45.72 [1.800] 48.26 [1.900] 38 1-147105-9	
				43.18 [1.700] 45.72 [1.800] 36 1-147105-8	
				40.64 [1.600] 43.18 [1.700] 34 1-147105-7	
38.10 [1.500] 40.64 [1.600] 32 1-147105-6					
35.56 [1.400] 38.10 [1.500] 30 1-147105-5					
33.02 [1.300] 35.56 [1.400] 28 1-147105-4					
30.48 [1.200] 33.02 [1.300] 26 1-147105-3					
27.94 [1.100] 30.48 [1.200] 24 1-147105-2					
25.40 [1.000] 27.94 [1.100] 22 1-147105-1					
22.86 [0.900] 25.40 [1.000] 20 1-147105-0					
20.32 [0.800] 22.86 [0.900] 18 147105-9					
17.78 [0.700] 20.32 [0.800] 16 147105-8					
15.24 [0.600] 17.78 [0.700] 14 147105-7					
12.70 [0.500] 15.24 [0.600] 12 147105-6					
10.16 [0.400] 12.70 [0.500] 10 147105-5					
7.62 [0.300] 10.16 [0.400] 8 147105-4					
5.08 [0.200] 7.62 [0.300] 6 147105-3					
2.54 [0.100] 5.08 [0.200] 4 147105-2					
24mm	-	2.54 [0.100]	2	147105-1	

THIS DRAWING IS A CONTROLLED DOCUMENT.

DWN	M.BINNER	06NOV02
CHK	J.OLSON	06NOV02
APVD	J.OLSON	06NOV02
PRODUCT SPEC		
APPLICATION SPEC		
108-25022		
WEIGHT	114-25018	
CUSTOMER DRAWING		

**STE** TE Connectivity

RECEPTACLE ASSEMBLY, MOD IV,  
 DOUBLE ROW, DUAL ENTRY, .100X.100CL,  
 SURFACE MOUNT, AMPMODU

SIZE	CAGE CODE	DRAWING NO	RESTRICTED TO
A2	00779	C=147105	-
SCALE	4:1	SHEET	1 of 2
REV	J9		

THIS DRAWING IS UNPUBLISHED. RELEASED FOR PUBLICATION  
 © COPYRIGHT - By - ALL RIGHTS RESERVED.

LOC	DIST	REVISIONS					
AD	00	P	LTR	DESCRIPTION	DATE	DWN	APVD
		-		SEE SHEET 1		-	-

- 1 HOUSING: FLAME RETARDANT, GLASS FILLED, POLYESTER, COLOR: BLACK.  
CONTACT: PHOSPHOR BRONZE  
VACUUM COVER: STAINLESS STEEL
- 2 CONTACT: DUPLEX PLATED 0.76µm[.000030] GOLD IN CONTACT AREA, 3.81-7.62µm[.000150-.000300] BRIGHT TIN-LEAD ON, LEADS, ALL OVER 1.27µm[.000050] MINIMUM NICKEL
- 3 THESE DIMENSIONS PERTAIN TO CAVITY CENTERLINES ONLY NOT TO CONTACT LOCATIONS
- 4 MARK PART NUMBER AND DATE CODE, IN APPROXIMATE LOCATION SHOWN, EITHER SIDE.
- 5 TOLERANCE IS NON-CUMULATIVE.
- 6 2 POSITION DATE CODE IS MARKED OPPOSITE SIDE OF TE CONNECTIVITY LOGO.
- 7 POINT OF MEASUREMENT DIMENSION FOR PLATING THICKNESS (INSIDE CONTACT BEAM).
- 8 POINT-OF-CONTACT DIMENSION.
- 9 ø5.51[.217] MIN TARGET AREA FOR VACUUM PICK UP. COVER TO BE REMOVED AFTER SOLDERING.
- 10 PACKAGED IN TAPE & REEL PER EIA 481 SPECIFICATION.
- 11 TE CONNECTIVITY TRADEMARK AND CSA LOGO ARE MOLDED INTO HOUSING.
- 12 NO PART NUMBER REQUIRED ON THIS PART.
- 13 CONTACT: DUPLEX PLATE CONNECTIVITYD 0.76µm[.000030] GOLD IN CONTACT AREA, 3.81-7.62µm[.000150-.000300] MATTE TIN ON LEADS, ALL OVER 1.27µm[.000050] MINIMUM NICKEL.
- 14 ROHS 2002/95/EC COMPLIANT.
- 15 SUPERRSEDED BY 6-147105-5
- 16 SUPERRSEDED BY 6-147105-8
- 17 SUPERRSEDED BY 7-147105-2
- 18 SUPERRSEDED BY 8-147105-0

FINISH	EIA TAPE WIDTH	B	A	NO.OF POSN.	PART NUMBER
120mm	120mm	99.06[3.900]	101.60[4.000]	80	9-147105-0
		96.52[3.800]	99.06[3.900]	78	8-147105-9
		93.98[3.700]	96.52[3.800]	76	8-147105-8
		91.44[3.600]	93.98[3.700]	74	8-147105-7
		88.90[3.500]	91.44[3.600]	72	8-147105-6
		86.36[3.400]	88.90[3.500]	70	8-147105-5
		83.82[3.300]	86.36[3.400]	68	8-147105-4
		81.28[3.200]	83.82[3.300]	66	8-147105-3
		78.74[3.100]	81.28[3.200]	64	8-147105-2
		76.20[3.000]	78.74[3.100]	62	8-147105-1
		73.66[2.900]	76.20[3.000]	60	8-147105-0
		71.12[2.800]	73.66[2.900]	58	7-147105-9
68.58[2.700]	71.12[2.800]	56	7-147105-8		
88mm	88mm	66.04[2.600]	68.58[2.700]	54	7-147105-7
		63.50[2.500]	66.04[2.600]	52	7-147105-6
		60.96[2.400]	63.50[2.500]	50	7-147105-5
		58.42[2.300]	60.96[2.400]	48	7-147105-4
		55.88[2.200]	58.42[2.300]	46	7-147105-3
		53.34[2.100]	55.88[2.200]	44	7-147105-2
72mm	72mm	50.80[2.000]	53.34[2.100]	42	7-147105-1
		48.26[1.900]	50.80[2.000]	40	7-147105-0
		45.72[1.800]	48.26[1.900]	38	6-147105-9
		43.18[1.700]	45.72[1.800]	36	6-147105-8
		40.64[1.600]	43.18[1.700]	34	6-147105-7
		38.10[1.500]	40.64[1.600]	32	6-147105-6
		35.56[1.400]	38.10[1.500]	30	6-147105-5
		33.02[1.300]	35.56[1.400]	28	6-147105-4
		30.48[1.200]	33.02[1.300]	26	6-147105-3
		27.94[1.100]	30.48[1.200]	24	6-147105-2
44mm	44mm	25.40[1.000]	27.94[1.100]	22	6-147105-1
		22.86[.900]	25.40[1.000]	20	6-147105-0
		20.32[.800]	22.86[.900]	18	5-147105-9
		17.78[.700]	20.32[.800]	16	5-147105-8
		15.24[.600]	17.78[.700]	14	5-147105-7
		12.70[.500]	15.24[.600]	12	5-147105-6
		10.16[.400]	12.70[.500]	10	5-147105-5
		7.62[.300]	10.16[.400]	8	5-147105-4
		5.08[.200]	7.62[.300]	6	5-147105-3
		2.54[.100]	5.08[.200]	4	5-147105-2
12/6 OBSOLETE	24mm	-	2.54[.100]	2	5-147105-1

THIS DRAWING IS A CONTROLLED DOCUMENT.		DWN M.BINNER 06NOV02	<b>STE</b> TE Connectivity	
DIMENSIONS: mm [INCHES]		CHK J.OLSON 06NOV02		
TOLERANCES UNLESS OTHERWISE SPECIFIED:		APVD J.OLSON 06NOV02	NAME RECEPTACLE ASSEMBLY, MOD IV, DOUBLE ROW, DUAL ENTRY, .100X.100CL, SURFACE MOUNT, AMPMODU	
0 PLC ± -		PRODUCT SPEC	SIZE CAGE CODE DRAWING NO RESTRICTED TO	
1 PLC ± -		APPLICATION SPEC	A2 00779 C=147105	
2 PLC ± .005[0.13]		108-25022	SCALE 1:1 SHEET 2 OF 2 REV J9	
3 PLC ± -		WEIGHT 114-25018		
4 PLC ± -		CUSTOMER DRAWING		
ANGLES ± -				
FINISH SEE TABLE				



Компания «ЭлектроПласт» предлагает заключение долгосрочных отношений при поставках импортных электронных компонентов на взаимовыгодных условиях!

Наши преимущества:

- Оперативные поставки широкого спектра электронных компонентов отечественного и импортного производства напрямую от производителей и с крупнейших мировых складов;
- Поставка более 17-ти миллионов наименований электронных компонентов;
- Поставка сложных, дефицитных, либо снятых с производства позиций;
- Оперативные сроки поставки под заказ (от 5 рабочих дней);
- Экспресс доставка в любую точку России;
- Техническая поддержка проекта, помощь в подборе аналогов, поставка прототипов;
- Система менеджмента качества сертифицирована по Международному стандарту ISO 9001;
- Лицензия ФСБ на осуществление работ с использованием сведений, составляющих государственную тайну;
- Поставка специализированных компонентов (Xilinx, Altera, Analog Devices, Intersil, Interpoint, Microsemi, Aeroflex, Peregrine, Syfer, Eurofarad, Texas Instrument, Miteq, Cobham, E2V, MA-COM, Hittite, Mini-Circuits, General Dynamics и др.);

Помимо этого, одним из направлений компании «ЭлектроПласт» является направление «Источники питания». Мы предлагаем Вам помощь Конструкторского отдела:

- Подбор оптимального решения, техническое обоснование при выборе компонента;
- Подбор аналогов;
- Консультации по применению компонента;
- Поставка образцов и прототипов;
- Техническая поддержка проекта;
- Защита от снятия компонента с производства.



#### Как с нами связаться

**Телефон:** 8 (812) 309 58 32 (многоканальный)

**Факс:** 8 (812) 320-02-42

**Электронная почта:** [org@eplast1.ru](mailto:org@eplast1.ru)

**Адрес:** 198099, г. Санкт-Петербург, ул. Калинина, дом 2, корпус 4, литера А.