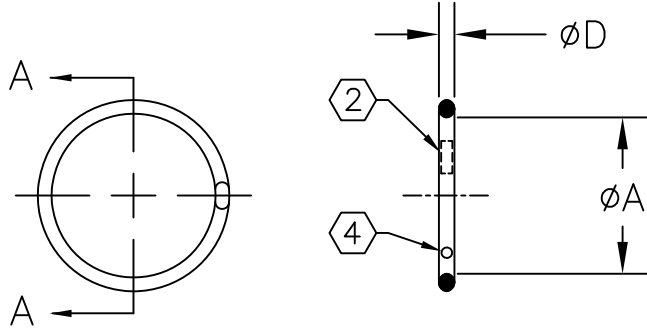


THIS DRAWING AND THE INFORMATION SET FORTH HERE-ON ARE THE PROPERTY OF TYCO ELECTRONICS, AND ARE TO BE HELD IN TRUST AND CONFIDENCE. PUBLICATION, DUPLICATION, DISCLOSURE, OR USE FOR ANY PURPOSE NOT EXPRESSLY AUTHORIZED IN WRITING BY TYCO ELECTRONICS IS PROHIBITED.

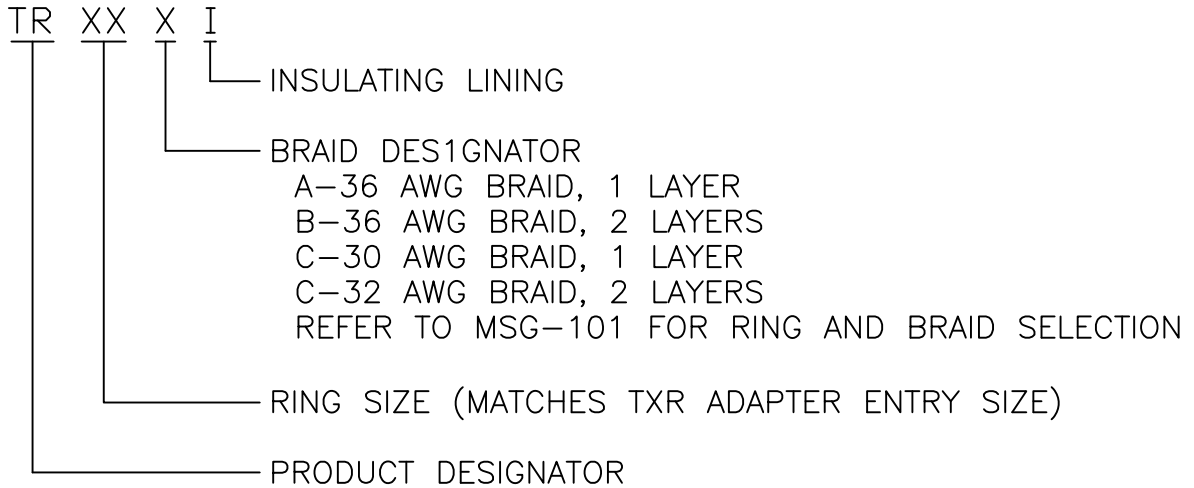
| REVISIONS |                                     |             |          |
|-----------|-------------------------------------|-------------|----------|
| LTR       | DESCRIPTION                         | DATE        | APPROVED |
| C1        | REVISED PER ECO-11-005139           | 20APR11     | HMR      |
| C2        | ADMINISTRATIVE CHANGE ECO-11-012135 | Jun/13/2011 | M.HIGGY  |

SCOPE:

THIS SPECIFICATION PROVIDES A DESCRIPTION OF HEAT SHRINKABLE METAL RINGS FOR TERMINATING BRAIDED SHIELD ONTO ADAPTORS DESIGNED FOR THAT PURPOSE.



PART DESCRIPTION:



NOTES:

1. MATERIAL: TINEL ALLOY X.
- ② THE OUTSIDE SURFACE OF THE RING IS MARKED WITH TWO STRIPES OF THERMOCHROMIC PAINT WHICH CHANGE COLOR WHEN THE APPROPRIATE INSTALLATION TEMPERATURE IS REACHED.
3. "AI" RINGS ARE IDENTIFIED BY THE ABSENCE OF A RED OR BLUE DOT. REFER TO NOTE 4.
- ④ "BI" RINGS ARE MARKED WITH A RED DOT.  
"CI" RINGS ARE MARKED WITH A BLUE DOT.
5. REFER TO MIP-101 FOR INSTALLATION PROCEDURE.

Raychem MTC  
CUSTOMER DRAWING

© 2008-2011 Tyco Electronics. All Rights Reserved.

UNLESS OTHERWISE SPECIFIED DIMENSIONS ARE INCHES. METRIC DIMENSIONS ARE IN BRACKETS.

DECIMAL TOLERANCES

|           |        |
|-----------|--------|
| .XXX ± -- | [ mm ] |
| .XX ± --  | [ mm ] |
| .X ± --   | [ mm ] |

ANGLE TOLERANCE

.X ± --

|                        |                  |
|------------------------|------------------|
| DRAWN<br>E. Goldy      | DATE<br>05-17-93 |
| CHECKED                | DATE             |
| APPROVED<br>W.C. Gay   | DATE<br>5-26-93  |
| CAD FILE:<br>TR-CD     |                  |
| THIRD ANGLE PROJECTION |                  |



|                          |                     |                |              |
|--------------------------|---------------------|----------------|--------------|
| TITLE<br>TINEL-LOCK RING |                     |                |              |
| SIZE<br>A                | CAGE CODE:<br>06090 | DWG. NO.<br>TR | REV:<br>C2   |
| SCALE: NONE              |                     |                | SHEET 1 OF 2 |

| PART DESCRIPTION | $\phi A$        |                    | $\phi D$             |
|------------------|-----------------|--------------------|----------------------|
|                  | MIN AS SUPPLIED | MAX FREE RECOVERED |                      |
| TR04AI           | .397 [10.08]    | .379 [9.63]        | .073±.005 [1.85±.13] |
| TR04BI           | .416 [10.57]    | .398 [10.11]       | .073±.005 [1.85±.13] |
| TR05AI           | .460 [11.68]    | .440 [11.18]       | .073±.005 [1.85±.13] |
| TR05BI           | .479 [12.17]    | .458 [11.63]       | .073±.005 [1.85±.13] |
| TR06AI           | .523 [13.28]    | .499 [12.68]       | .073±.005 [1.85±.13] |
| TR06BI           | .548 [13.92]    | .523 [13.28]       | .073±.005 [1.85±.13] |
| TR07AI           | .586 [14.88]    | .559 [14.20]       | .073±.005 [1.85±.13] |
| TR07BI           | .606 [15.39]    | .578 [14.68]       | .073±.005 [1.85±.13] |
| TR08AI           | .650 [16.51]    | .620 [15.75]       | .073±.005 [1.85±.13] |
| TR08BI           | .670 [17.02]    | .639 [16.23]       | .073±.005 [1.85±.13] |
| TR10AI           | .782 [19.86]    | .744 [18.90]       | .073±.005 [1.85±.13] |
| TR10BI           | .802 [20.37]    | .763 [19.38]       | .073±.005 [1.85±.13] |
| TR10CI           | .830 [21.08]    | .791 [20.09]       | .073±.005 [1.85±.13] |
| TR12AI           | .912 [23.17]    | .867 [22.02]       | .073±.005 [1.85±.13] |
| TR12BI           | .931 [23.65]    | .886 [22.50]       | .073±.005 [1.85±.13] |
| TR12CI           | .960 [24.38]    | .912 [23.17]       | .073±.005 [1.85±.13] |
| TR14AI           | 1.040 [26.42]   | .988 [25.10]       | .073±.005 [1.85±.13] |
| TR14BI           | 1.060 [26.92]   | 1.007 [25.58]      | .073±.005 [1.85±.13] |
| TR14CI           | 1.089 [27.66]   | 1.033 [26.24]      | .073±.005 [1.85±.13] |
| TR16AI           | 1.171 [29.74]   | 1.111 [28.22]      | .073±.005 [1.85±.13] |
| TR16BI           | 1.191 [30.25]   | 1.129 [28.68]      | .073±.005 [1.85±.13] |
| TR16CI           | 1.216 [30.89]   | 1.154 [29.31]      | .073±.005 [1.85±.13] |
| TR18AI           | 1.301 [33.05]   | 1.234 [31.34]      | .073±.005 [1.85±.13] |
| TR18BI           | 1.320 [33.53]   | 1.252 [31.80]      | .073±.005 [1.85±.13] |
| TR20AI           | 1.430 [36.32]   | 1.357 [34.47]      | .073±.005 [1.85±.13] |
| TR20BI           | 1.450 [36.83]   | 1.376 [34.95]      | .073±.005 [1.85±.13] |
| TR22AI           | 1.543 [39.19]   | 1.463 [37.16]      | .088±.007 [2.24±.18] |
| TR22BI           | 1.561 [39.65]   | 1.481 [37.62]      | .088±.007 [2.24±.18] |
| TR24AI           | 1.673 [42.49]   | 1.587 [40.31]      | .088±.007 [2.24±.18] |
| TR24BI           | 1.691 [42.95]   | 1.605 [40.77]      | .088±.007 [2.24±.18] |
| TR28AI           | 1.932 [49.07]   | 1.838 [46.68]      | .088±.007 [2.24±.18] |
| TR28BI           | 1.950 [49.53]   | 1.858 [47.19]      | .088±.007 [2.24±.18] |

If this document is printed it becomes uncontrolled. Check for the latest revision

Raychem MTC  
CUSTOMER DRAWING

© 2008–2011 Tyco Electronics. All Rights Reserved.



TE Connectivity

|                    |                    |             |                     |                |            |
|--------------------|--------------------|-------------|---------------------|----------------|------------|
| DRAWN<br>E. Goldy  | DATE<br>05-17-1993 | SIZE<br>A   | CAGE CODE:<br>06090 | DWG. NO.<br>TR | REV:<br>C2 |
| CAD FILE:<br>TR-CD |                    | SCALE: NONE |                     | SHEET 2 OF 2   |            |



Компания «ЭлектроПласт» предлагает заключение долгосрочных отношений при поставках импортных электронных компонентов на взаимовыгодных условиях!

Наши преимущества:

- Оперативные поставки широкого спектра электронных компонентов отечественного и импортного производства напрямую от производителей и с крупнейших мировых складов;
- Поставка более 17-ти миллионов наименований электронных компонентов;
- Поставка сложных, дефицитных, либо снятых с производства позиций;
- Оперативные сроки поставки под заказ (от 5 рабочих дней);
- Экспресс доставка в любую точку России;
- Техническая поддержка проекта, помощь в подборе аналогов, поставка прототипов;
- Система менеджмента качества сертифицирована по Международному стандарту ISO 9001;
- Лицензия ФСБ на осуществление работ с использованием сведений, составляющих государственную тайну;
- Поставка специализированных компонентов (Xilinx, Altera, Analog Devices, Intersil, Interpoint, Microsemi, Aeroflex, Peregrine, Syfer, Eurofarad, Texas Instrument, Miteq, Cobham, E2V, MA-COM, Hittite, Mini-Circuits, General Dynamics и др.);

Помимо этого, одним из направлений компании «ЭлектроПласт» является направление «Источники питания». Мы предлагаем Вам помощь Конструкторского отдела:

- Подбор оптимального решения, техническое обоснование при выборе компонента;
- Подбор аналогов;
- Консультации по применению компонента;
- Поставка образцов и прототипов;
- Техническая поддержка проекта;
- Защита от снятия компонента с производства.



#### Как с нами связаться

**Телефон:** 8 (812) 309 58 32 (многоканальный)

**Факс:** 8 (812) 320-02-42

**Электронная почта:** [org@eplast1.ru](mailto:org@eplast1.ru)

**Адрес:** 198099, г. Санкт-Петербург, ул. Калинина, дом 2, корпус 4, литера А.