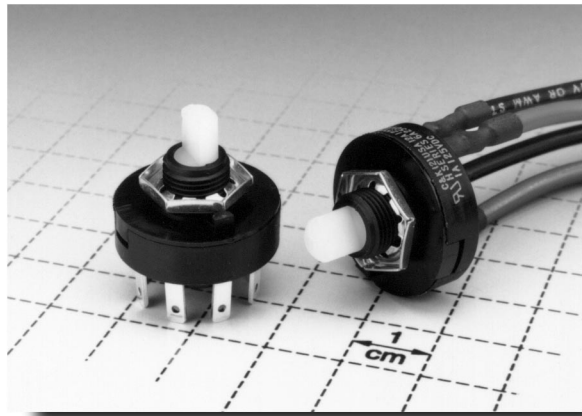


C&K H Series Power ROTA-SLIDE® Rotary Switches



Features/Benefits

- Multi-pole and multi-position
- Positive detent
- Power switching up to 12 AMPS
- Value added capability

Typical Applications

- Small appliances
- Industrial equipment
- Elevators

Build-A-Switch

Our easy Build-A-Switch concept allows you to mix and match options to create the switch you need. Below is a complete listing of options shown in catalog. To order, simply select desired option from each category and place in the appropriate box. A switch with standard options is shown on page I-23. Available options are shown and described on pages I-23 and I-24. For additional options not shown in catalog, consult Customer Service Center.

Typical Example: H 1 0 0 — 0 7 — R R — 0 5 — Q —

Switch Function

- H100** (STD.) SP, 45° Index, 8 pos. no stops
- H101** SPST, 45° Index
- H102** SPDT, 45° Index
- H103** SP, 45° Index, 3 pos.
- H104** SP, 45° Index, 4 pos.
- H105** SP, 45° Index, 5 pos.
- H106** SP, 45° Index, 6 pos.
- H107** SP, 45° Index, 7 pos.
- H108** SP, 45° Index, 8 pos.
- H200** DP, 45° Index, 4 pos. no stops
- H201** DPST, 45° Index
- H202** DPDT, 45° Index
- H203** DP, 45° Index, 3 pos.
- H204** DP, 45° Index, 4 pos.
- HA01** SPDT, 90° Index
- HA05** SP, 90° Index, 3 pos.
- HA55** SP, 90° Index, 4 pos. no stops
- HB11** DPDT, 90° Index

Actuator

07 (STD.) .275" high with .156" flat

Mounting Style

RR (STD.) 3/8-40 threaded bushing

Terminations

- 05** (STD.) .110" quick connect
- 01** Solder lug with notch
- WC** Wire lead

Contact Material

Q (STD.) Silver

Seal

- NONE** (STD.) No seal
- E** Epoxy seal

Specifications

CONTACT RATING: 12 Amps @ 125 V AC; 6 AMPS @ 250 V AC;
1 AMP @ 125 V DC (UL/CSA).

ELECTRICAL LIFE: 10,000 make-and-break cycles at full load.

INSULATION RESISTANCE: 10⁹ ohms min.

DIELECTRIC STRENGTH: 1,000 V RMS min. @ sea level.

INDEXING: 45°-one contact models, 8 positions max.; two contact models, 4 positions max. 90°-one contact models, 4 positions max.; two contact models, 2 positions max.

Materials

HOUSING & BUSHING: 6/6 nylon (UL 94V-2).

ACTUATOR: 6/6 nylon (UL 94V-2).

CONTACTS & TERMINALS: Copper, silver plated.

CONTACT SPRING: Music wire or stainless steel.

MOUNTING NUT: Steel, zinc plated.

TERMINAL SEAL: Epoxy.

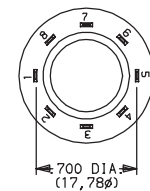
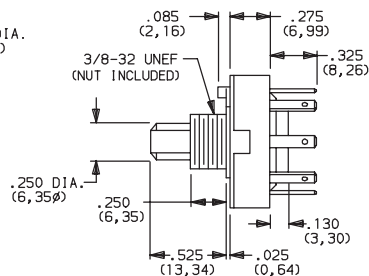
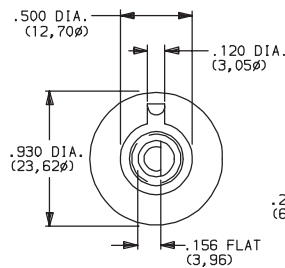
NOTE: Specifications and materials listed above are for switches with standard options. For information on specific and custom switches, consult Customer Service Center.

C&K H Series Power ROTA-SLIDE® Rotary Switches

SWITCHES WITH STANDARD OPTIONS

PART NUMBER	FUNCTION	INDEXING
H10007RR05Q	SP	45°

NOTE: For panel mounting information, see page I-24.



TERM. NOS.
MOLDED ON HOUSING



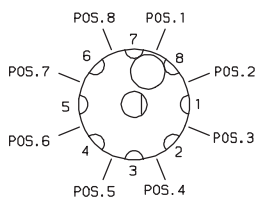
H10007RR05Q
SP

SWITCH FUNCTION



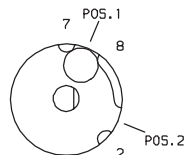
SP MODELS 45° INDEXING			
NO. POLES	MODEL NO.	SWITCH FUNCTION	TERMINALS
SP	H100	8 Position No Stops	All Terminals
	H101	SPST	8-1
	H102	SPDT	7-8-1
	H103	3 Position	7-8-1-2
	H104	4 Position	7-8-1-2-3
	H105	5 Position	7-8-1-2-3-4
	H106	6 Position	7-8-1-2-3-4-5
	H107	7 Position	All Terminals
H108	8 Position	All Terminals	

SP MODELS 45° INDEXING
SCHEMATIC

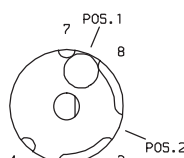


SP MODELS 90° INDEXING			
NO. POLES	MODEL NO.	SWITCH FUNCTION	TERMINALS
SP	HA01	SPDT	7-8-2
	HA05	3 Position	7-8-2-4
	HA55	4 Position No Stops	8-2-4-6

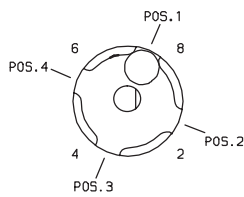
SP MODELS 90° INDEXING
SCHEMATICS



HA01



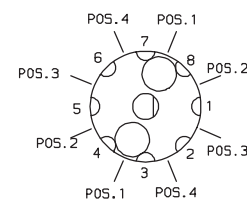
HA05



HA55

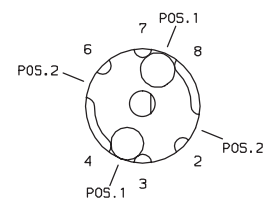
DP MODELS 45° INDEXING			
NO. POLES	MODEL NO.	SWITCH FUNCTION	TERMINALS
DP	H200	4 Position No Stops	All Terminals
	H201	DPST	8-1, 4-5
	H202	DPDT	7-8-1, 3-4-5
	H203	3 Position	All Terminals
	H204	4 Position	All Terminals

DP MODELS 45° INDEXING
SCHEMATIC



DP MODELS 90° INDEXING			
NO. POLES	MODEL NO.	SWITCH FUNCTION	TERMINALS
DP	HB11	DPDT	7-8-2-3-4-6

DP MODELS 90° INDEXING
SCHEMATIC



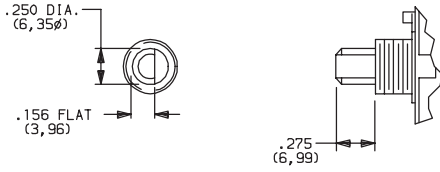
NOTE: Break-before-make contacts. Terminal numbers are molded on bottom of housing. Actuators and contacts are shown in position 1. No common terminal is present. Switching function is provided by movable contacts shorting adjacent pairs of stationary contacts.

All models with all options.

C&K H Series Power ROTA-SLIDE® Rotary Switches

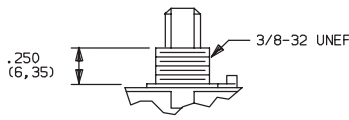
ACTUATOR

07 (STD.) .275" HIGH WITH .156" FLAT



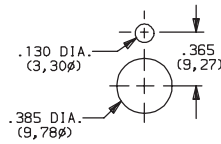
MOUNTING STYLE

RR (STD.) 3/8-32 THREADED BUSHING



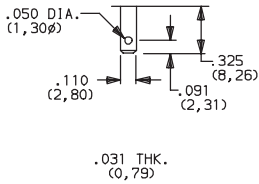
Mounting nut included (part number 175000100).

PANEL MOUNTING

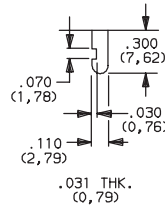


TERMINATIONS

05 (STD.) SOLDER LUG WITH HOLE

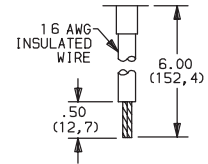


01 SOLDER LUG WITH NOTCH



Not available on models with 90° indexing.

WC WIRE LEAD



Black wire standard, other colors and lengths available, consult Customer Service Center. UL style 1015.

CONTACT MATERIAL

OPTION CODE	CONTACT AND TERMINAL MATERIAL	RATINGS	
Q (STD.)	SILVER ¹	POWER	12 AMPS @ 125 V AC; 6 AMPS @ 250 V AC; 1 AMP @ 125 V DC.

CONTACT MATERIAL/APPLICATION RECOMMENDATIONS — SEE CHART, PAGE L-31.

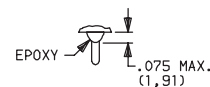
¹ CONTACTS & TERMINALS: Copper, silver plated.

All models  with all options.

SEAL

NONE (STD.) NO SEAL

E EPOXY SEAL





Компания «ЭлектроПласт» предлагает заключение долгосрочных отношений при поставках импортных электронных компонентов на взаимовыгодных условиях!

Наши преимущества:

- Оперативные поставки широкого спектра электронных компонентов отечественного и импортного производства напрямую от производителей и с крупнейших мировых складов;
- Поставка более 17-ти миллионов наименований электронных компонентов;
- Поставка сложных, дефицитных, либо снятых с производства позиций;
- Оперативные сроки поставки под заказ (от 5 рабочих дней);
- Экспресс доставка в любую точку России;
- Техническая поддержка проекта, помощь в подборе аналогов, поставка прототипов;
- Система менеджмента качества сертифицирована по Международному стандарту ISO 9001;
- Лицензия ФСБ на осуществление работ с использованием сведений, составляющих государственную тайну;
- Поставка специализированных компонентов (Xilinx, Altera, Analog Devices, Intersil, Interpoint, Microsemi, Aeroflex, Peregrine, Syfer, Eurofarad, Texas Instrument, Miteq, Cobham, E2V, MA-COM, Hittite, Mini-Circuits, General Dynamics и др.);

Помимо этого, одним из направлений компании «ЭлектроПласт» является направление «Источники питания». Мы предлагаем Вам помощь Конструкторского отдела:

- Подбор оптимального решения, техническое обоснование при выборе компонента;
- Подбор аналогов;
- Консультации по применению компонента;
- Поставка образцов и прототипов;
- Техническая поддержка проекта;
- Защита от снятия компонента с производства.



Как с нами связаться

Телефон: 8 (812) 309 58 32 (многоканальный)

Факс: 8 (812) 320-02-42

Электронная почта: org@eplast1.ru

Адрес: 198099, г. Санкт-Петербург, ул. Калинина, дом 2, корпус 4, литера А.