

THIS DRAWING IS UNPUBLISHED. RELEASED FOR PUBLICATION 20  
 © COPYRIGHT 20 BY - ALL RIGHTS RESERVED.

| LOC |     | DIST                      |  | REVISIONS |     |      |  |
|-----|-----|---------------------------|--|-----------|-----|------|--|
| P   | LTR | DESCRIPTION               |  | DATE      | DWN | APVD |  |
|     | A4  | REVISED PER ECR-13-007047 |  | 16MAY2013 | RS  | DD   |  |
|     | A5  | REVISED PER ECR-15-003564 |  | 13MAR2015 | RS  | DD   |  |
|     | B   | REVISED PER ECR-15-004054 |  | 28JUL2015 | RS  | DD   |  |
|     | C   | REVISED PER ECR-15-017995 |  | 18DEC2015 | RS  | DD   |  |

1 MATERIALS AND FINISH:  
 - HOUSING: LCP, COLOR: NATURAL  
 - CONTACTS: COPPER ALLOY, FINISH: Sn OVER Ni

2. COMPLY WITH DIRECTIVE 2002/95/EC (ROHS).

3. 18-24AWG SOLID OR STRANDED WIRE.  
 PLEASE REFER TO APPLICATION SPEC 114-13266  
 FOR RECOMMENDED STRAND COUNT.  
 18AWG MAX INSULATION OD: 2.20  
 20AWG MAX INSULATION OD: 1.90  
 22AWG MAX INSULATION OD: 1.70  
 24AWG MAX INSULATION OD: 1.45

4. PACKAGE IN TAPE AND REEL. PER EIA-481 SPECIFICATION;  
 (EXCEPT 1 POSITION CONNECTOR).

5 WIRE SIZE MARKING IN APPROXIMATE LOCATION SHOWN.

6 DATUMS AND BASIC DIMENSIONS ESTABLISHED BY CUSTOMER.

7 COLOR CODE MARKING, STRAIGHT LINE.

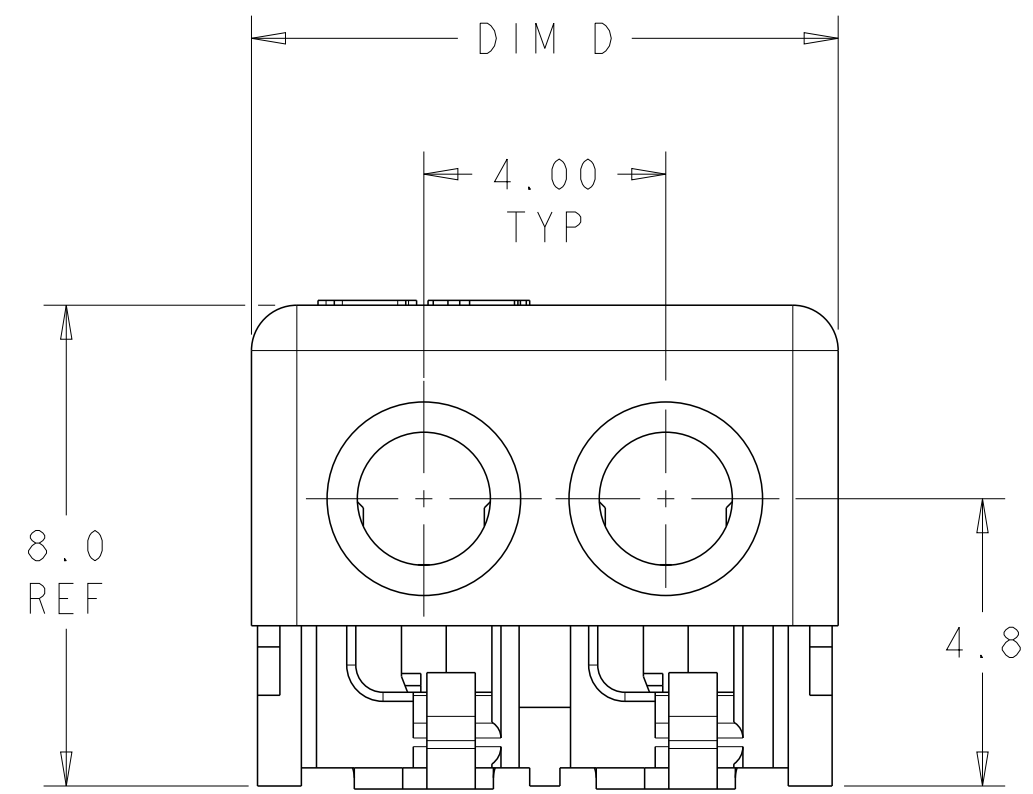
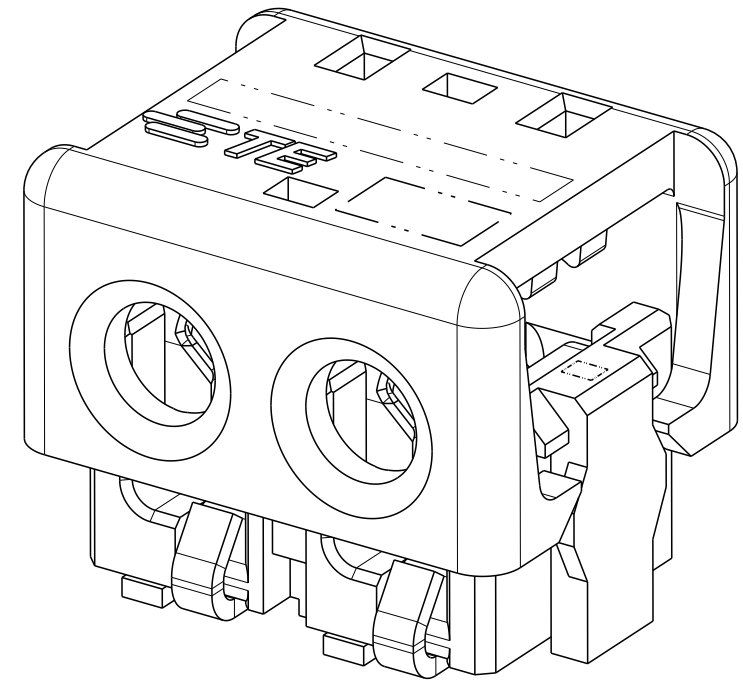
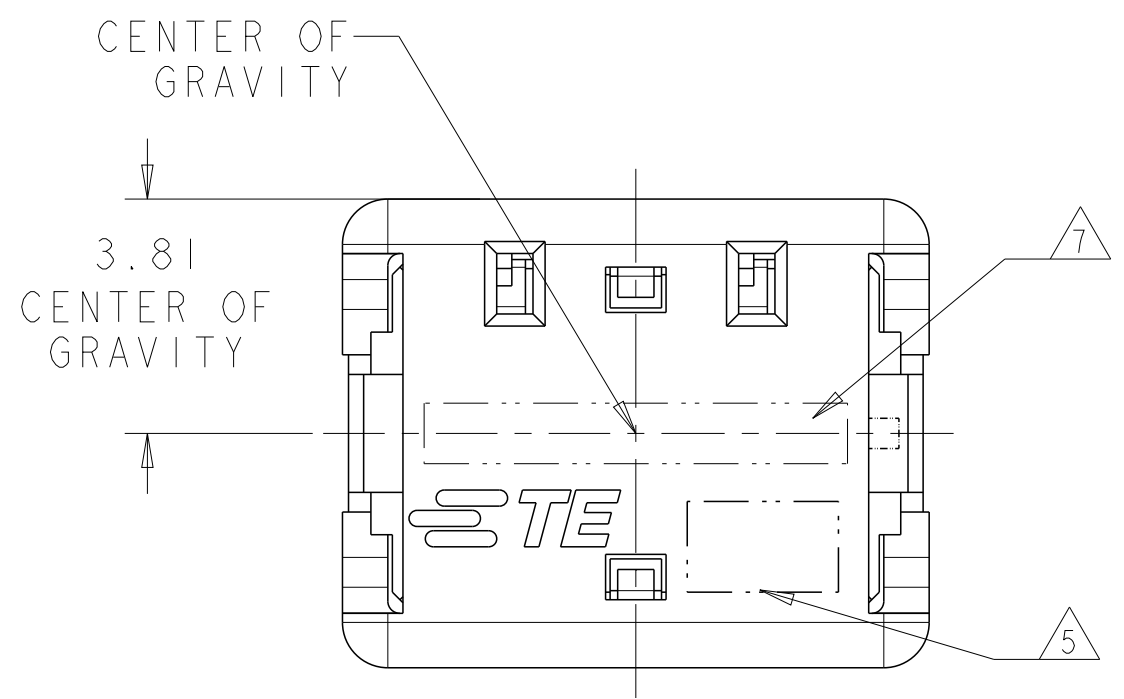
8 1 POSITION ASSEMBLY DOES NOT COMPLY WITH EIA 481 SPECIFICATION.

| COLOR CODE | DIM D | WIRE SIZE | POSN | COLOR   | PART NUMBER |
|------------|-------|-----------|------|---------|-------------|
| RED        | 17.70 | 24 AWG    | 4    | BLACK   | 7-2106003-4 |
|            | 13.70 | 24 AWG    | 3    | BLACK   | 7-2106003-3 |
|            | 9.70  | 24 AWG    | 2    | BLACK   | 7-2106003-2 |
|            | 5.70  | 24 AWG    | 1    | BLACK   | 7-2106003-1 |
| GREEN      | 17.70 | 22 AWG    | 4    | BLACK   | 6-2106003-4 |
|            | 13.70 | 22 AWG    | 3    | BLACK   | 6-2106003-3 |
|            | 9.70  | 22 AWG    | 2    | BLACK   | 6-2106003-2 |
|            | 5.70  | 22 AWG    | 1    | BLACK   | 6-2106003-1 |
| BLUE       | 17.70 | 20 AWG    | 4    | BLACK   | 5-2106003-4 |
|            | 13.70 | 20 AWG    | 3    | BLACK   | 5-2106003-3 |
|            | 9.70  | 20 AWG    | 2    | BLACK   | 5-2106003-2 |
|            | 5.70  | 20 AWG    | 1    | BLACK   | 5-2106003-1 |
| YELLOW     | 17.70 | 18 AWG    | 4    | BLACK   | 4-2106003-4 |
|            | 13.70 | 18 AWG    | 3    | BLACK   | 4-2106003-3 |
|            | 9.70  | 18 AWG    | 2    | BLACK   | 4-2106003-2 |
|            | 5.70  | 18 AWG    | 1    | BLACK   | 4-2106003-1 |
| RED        | 17.70 | 24 AWG    | 4    | NATURAL | 3-2106003-4 |
|            | 13.70 | 24 AWG    | 3    | NATURAL | 3-2106003-3 |
|            | 9.70  | 24 AWG    | 2    | NATURAL | 3-2106003-2 |
|            | 5.70  | 24 AWG    | 1    | NATURAL | 3-2106003-1 |
| GREEN      | 17.70 | 22 AWG    | 4    | NATURAL | 2-2106003-4 |
|            | 13.70 | 22 AWG    | 3    | NATURAL | 2-2106003-3 |
|            | 9.70  | 22 AWG    | 2    | NATURAL | 2-2106003-2 |
|            | 5.70  | 22 AWG    | 1    | NATURAL | 2-2106003-1 |
| BLUE       | 17.70 | 20 AWG    | 4    | NATURAL | 1-2106003-4 |
|            | 13.70 | 20 AWG    | 3    | NATURAL | 1-2106003-3 |
|            | 9.70  | 20 AWG    | 2    | NATURAL | 1-2106003-2 |
|            | 5.70  | 20 AWG    | 1    | NATURAL | 1-2106003-1 |
| YELLOW     | 17.70 | 18 AWG    | 4    | NATURAL | 2106003-4   |
|            | 13.70 | 18 AWG    | 3    | NATURAL | 2106003-3   |
|            | 9.70  | 18 AWG    | 2    | NATURAL | 2106003-2   |
|            | 5.70  | 18 AWG    | 1    | NATURAL | 2106003-1   |

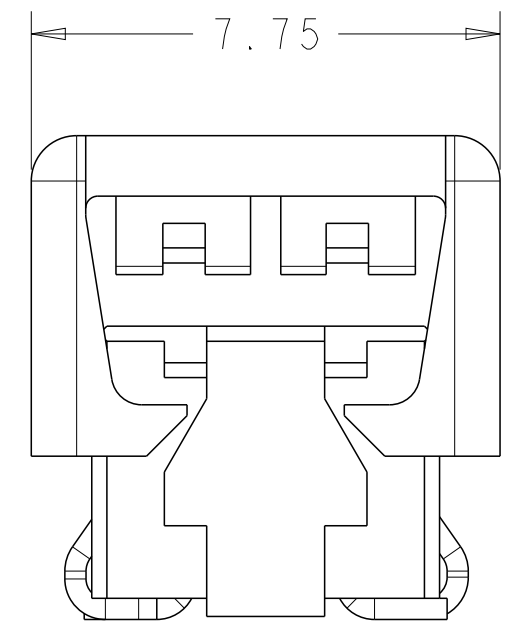
|  |  |                               |  |                         |
|--|--|-------------------------------|--|-------------------------|
| THIS DRAWING IS A CONTROLLED DOCUMENT. |  | DWN<br>C DAILY 09DEC2008      | TE Connectivity  |                         |
|  |  | CHK<br>J DYER 09DEC2008       |  |                         |
| DIMENSIONS:<br>mm                      | TOLERANCES UNLESS OTHERWISE SPECIFIED:                     | APVD<br>-                     | NAME<br>ASSEMBLY,<br>IDC SSL CONNECTOR,<br>SMT, CLOSED END |                         |
|  | 0 PLC ±<br>1 PLC ±0.5<br>2 PLC ±0.13<br>3 PLC ±<br>4 PLC ± | PRODUCT SPEC<br>108-2404      | SIZE<br>A2   |                         |
| MATERIAL                               | ANGLES ±<br>FINISH   | APPLICATION SPEC<br>114-13266 | CAGE CODE<br>00779   | DRAWING NO<br>C-2106003 |
|  |  | WEIGHT<br>-                   | RESTRICTED TO<br>-   | SCALE<br>2:1            |
| Customer Drawing                       |  |                               | SHEET 1 OF 4   | REV C                   |

THIS DRAWING IS UNPUBLISHED. RELEASED FOR PUBLICATION 20  
 © COPYRIGHT 20 BY - ALL RIGHTS RESERVED.

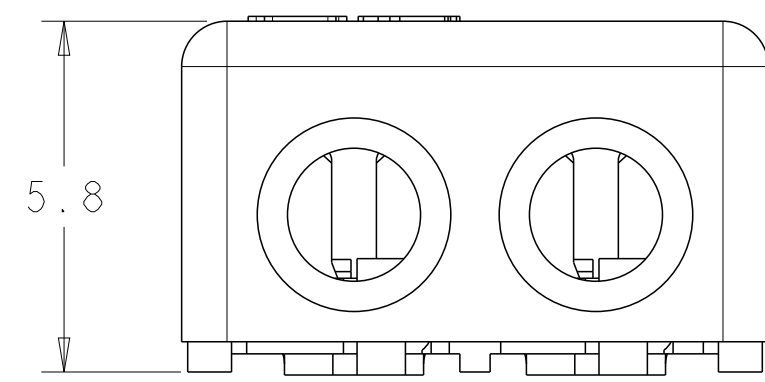
| LOC |     | DIST        |  | REVISIONS |     |      |  |
|-----|-----|-------------|--|-----------|-----|------|--|
| P   | LTR | DESCRIPTION |  | DATE      | DWN | APVD |  |
| -   | -   | SEE SHEET 1 |  | -         | -   | -    |  |
|     |     |             |  |           |     |      |  |
|     |     |             |  |           |     |      |  |



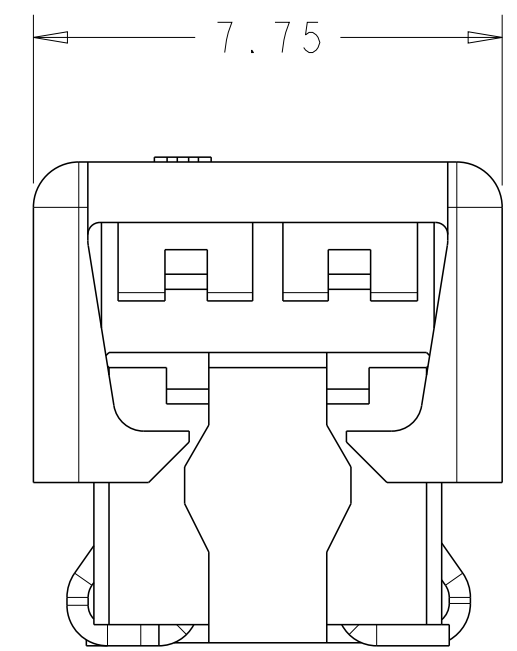
2 POSITION SHOWN AS SHIPPED



FOR 1 POSITION ONLY



2 POSITION SHOWN CLOSED SCALE 8:1

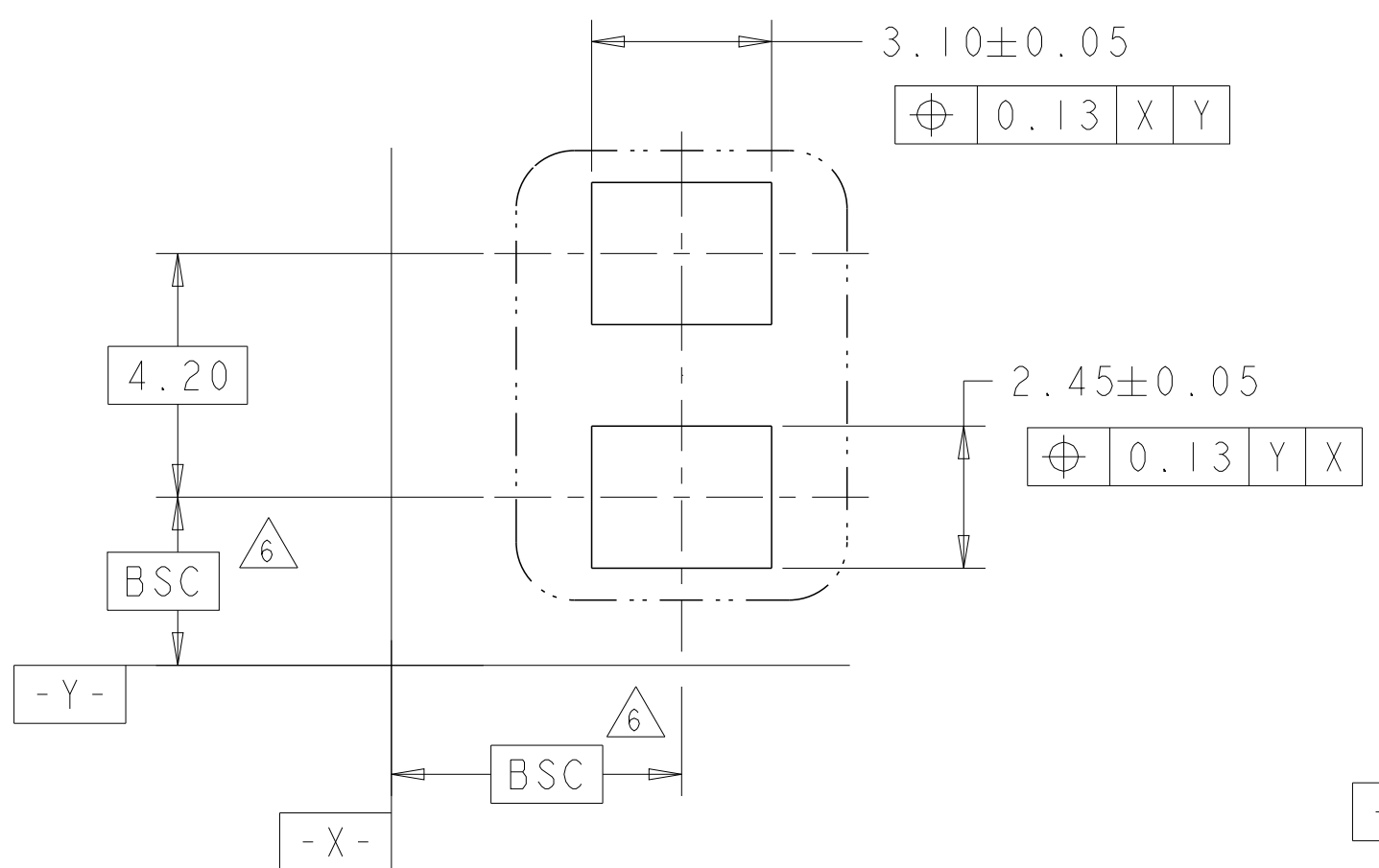


FOR 2, 3 AND 4 POSITIONS

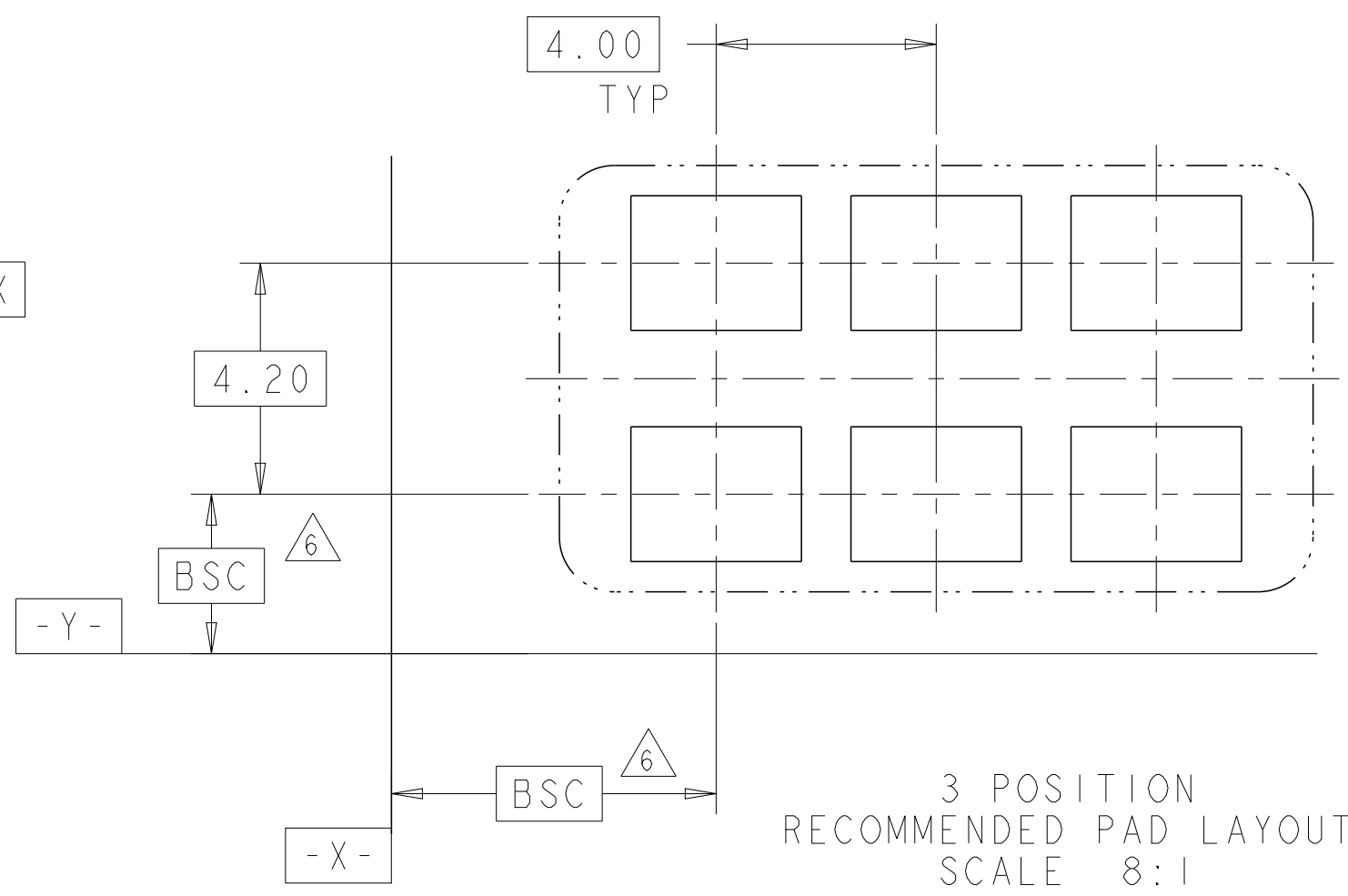
|  |  |                                 |                        |  |           |
|--|--|---------------------------------|------------------------|--|-----------|
| THIS DRAWING IS A CONTROLLED DOCUMENT. |  | DWN<br>C DAILY<br>CHK<br>J DYER | 09DEC2008<br>09DEC2008 | TE Connectivity                              |           |
| DIMENSIONS:                            |  | APVD                            |                        |  |           |
| mm                                     | TOLERANCES UNLESS OTHERWISE SPECIFIED: | PRODUCT SPEC                    |                        | ASSEMBLY, IDC SSL CONNECTOR, SMT, CLOSED END |           |
| 0 PLC ±                                | 1 PLC ±0.5                             | APPLICATION SPEC                |                        | SIZE   | CAGE CODE |
| 2 PLC ±0.13                            | 3 PLC ±                                | 114-13266                       |                        | DRAWING NO                                   |           |
| 4 PLC ±                                | ANGLES ±                               | WEIGHT                          |                        | RESTRICTED TO                                |           |
| MATERIAL                               | FINISH                                 | Customer Drawing                |                        | A200779C-2106003                             |           |
| material_2                             | finish_spec_2                          | SCALE 2:1                       |                        | SHEET 1 OF 4                                 | REV C     |

THIS DRAWING IS UNPUBLISHED. RELEASED FOR PUBLICATION 20  
 © COPYRIGHT 20 BY - ALL RIGHTS RESERVED.

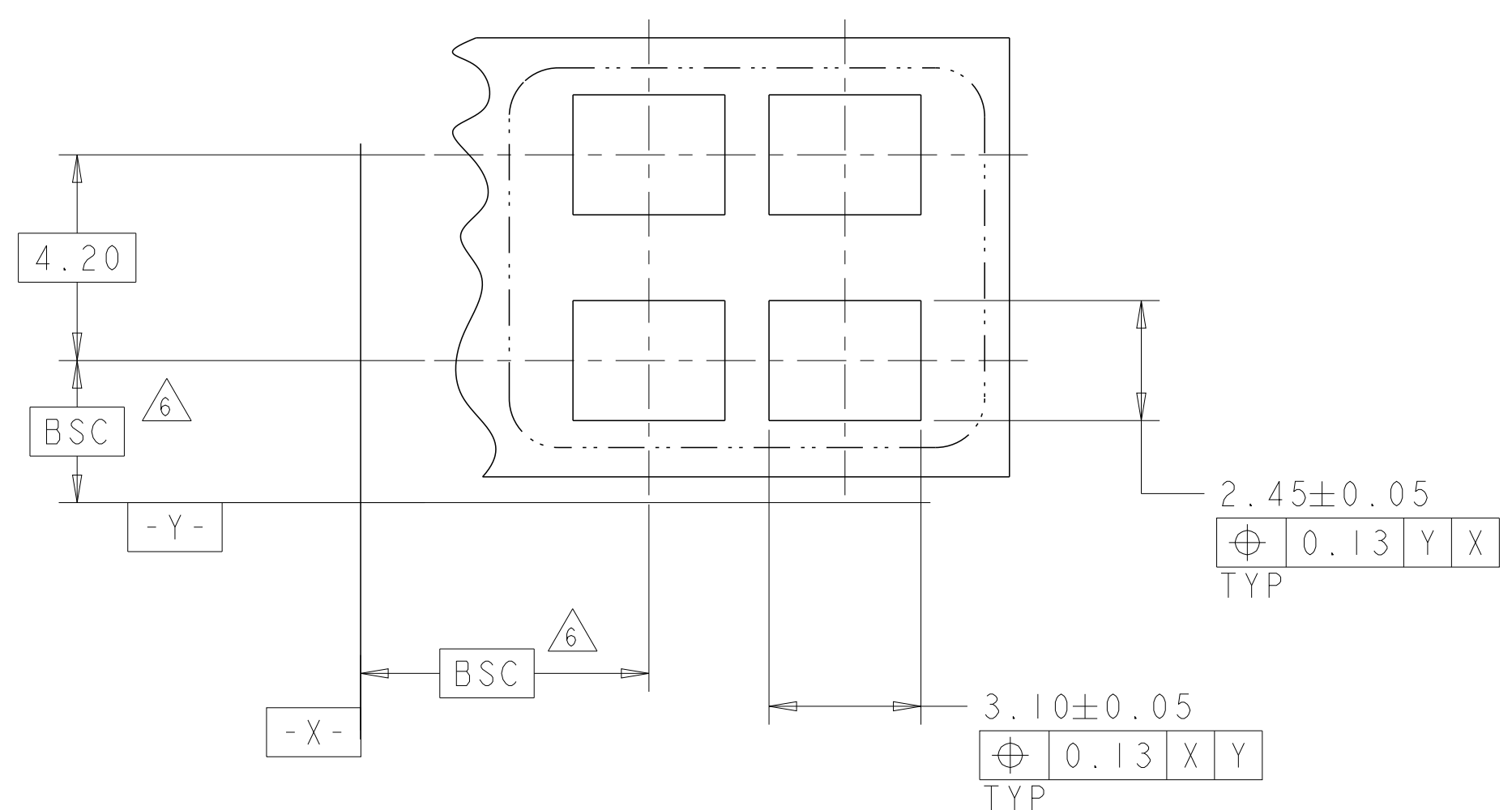
| LOC |     | DIST        |  | REVISIONS |      |     |      |  |
|-----|-----|-------------|--|-----------|------|-----|------|--|
| P   | LTR | DESCRIPTION |  |           | DATE | DWN | APVD |  |
| -   | -   | SEE SHEET 1 |  |           | -    | -   | -    |  |
|     |     |             |  |           |      |     |      |  |
|     |     |             |  |           |      |     |      |  |



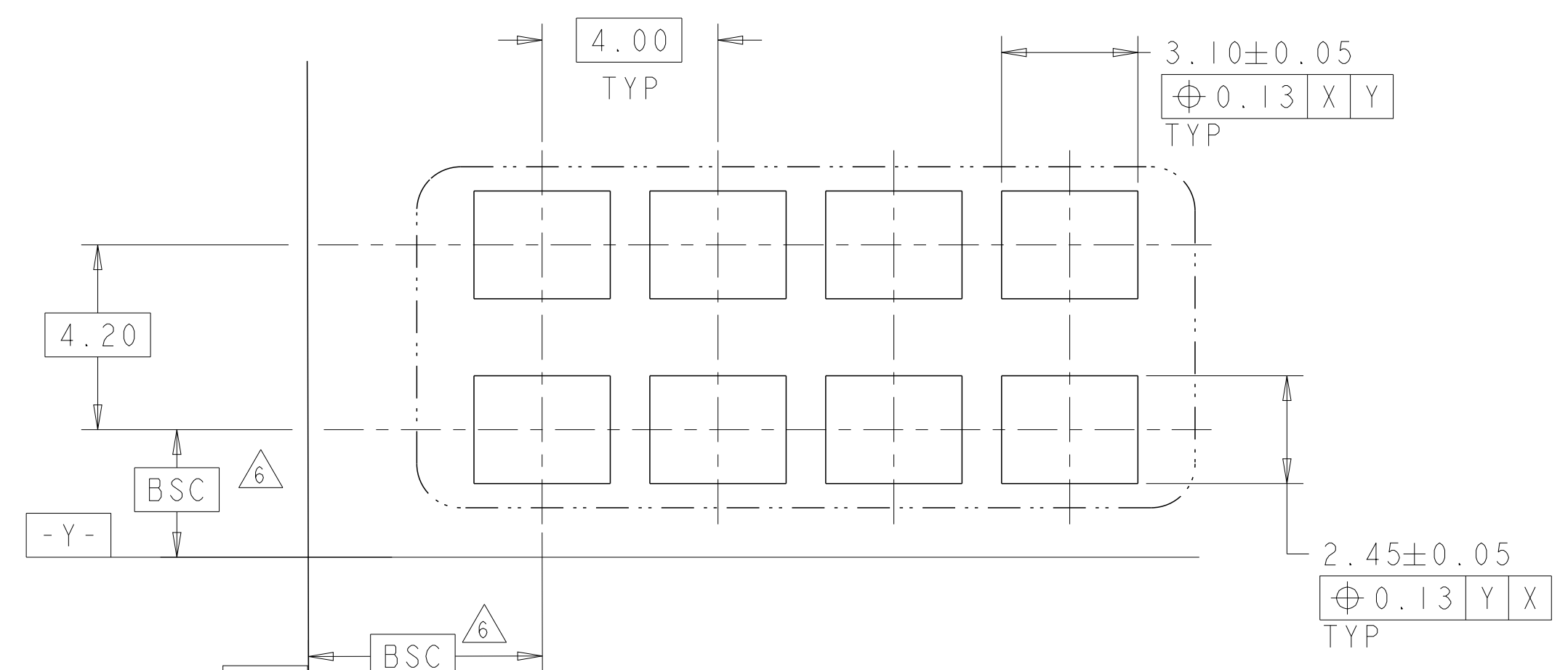
1 POSITION  
RECOMMENDED PAD LAYOUT  
SCALE 8:1



3 POSITION  
RECOMMENDED PAD LAYOUT  
SCALE 8:1



2 POSITION  
RECOMMENDED PAD LAYOUT  
SCALE 8:1

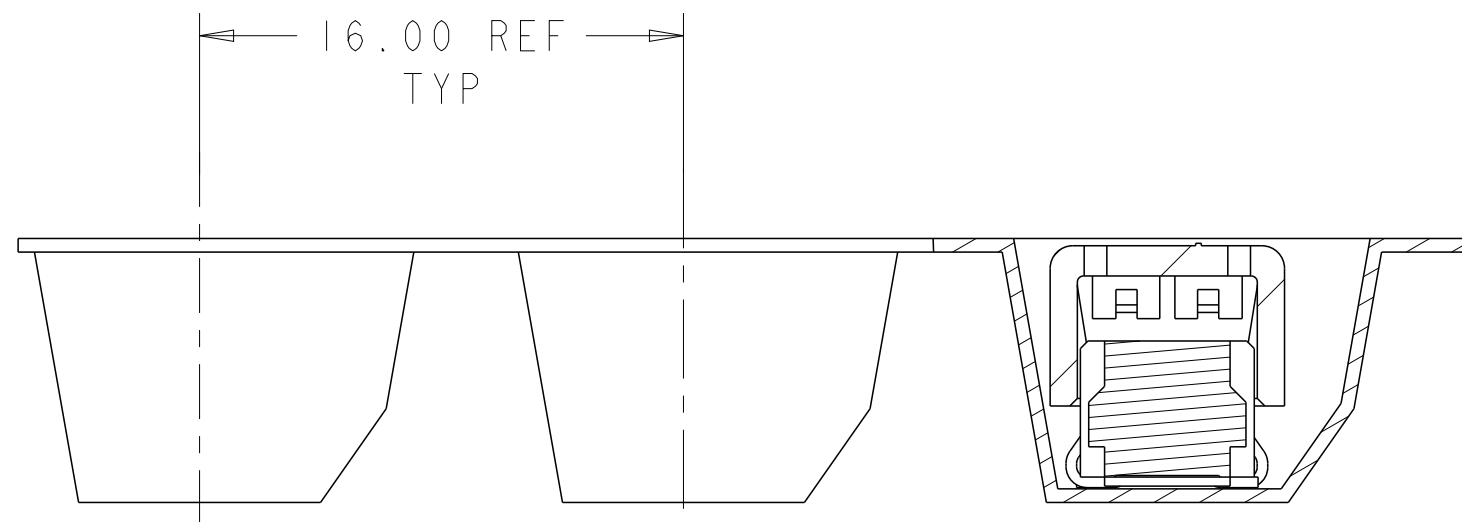
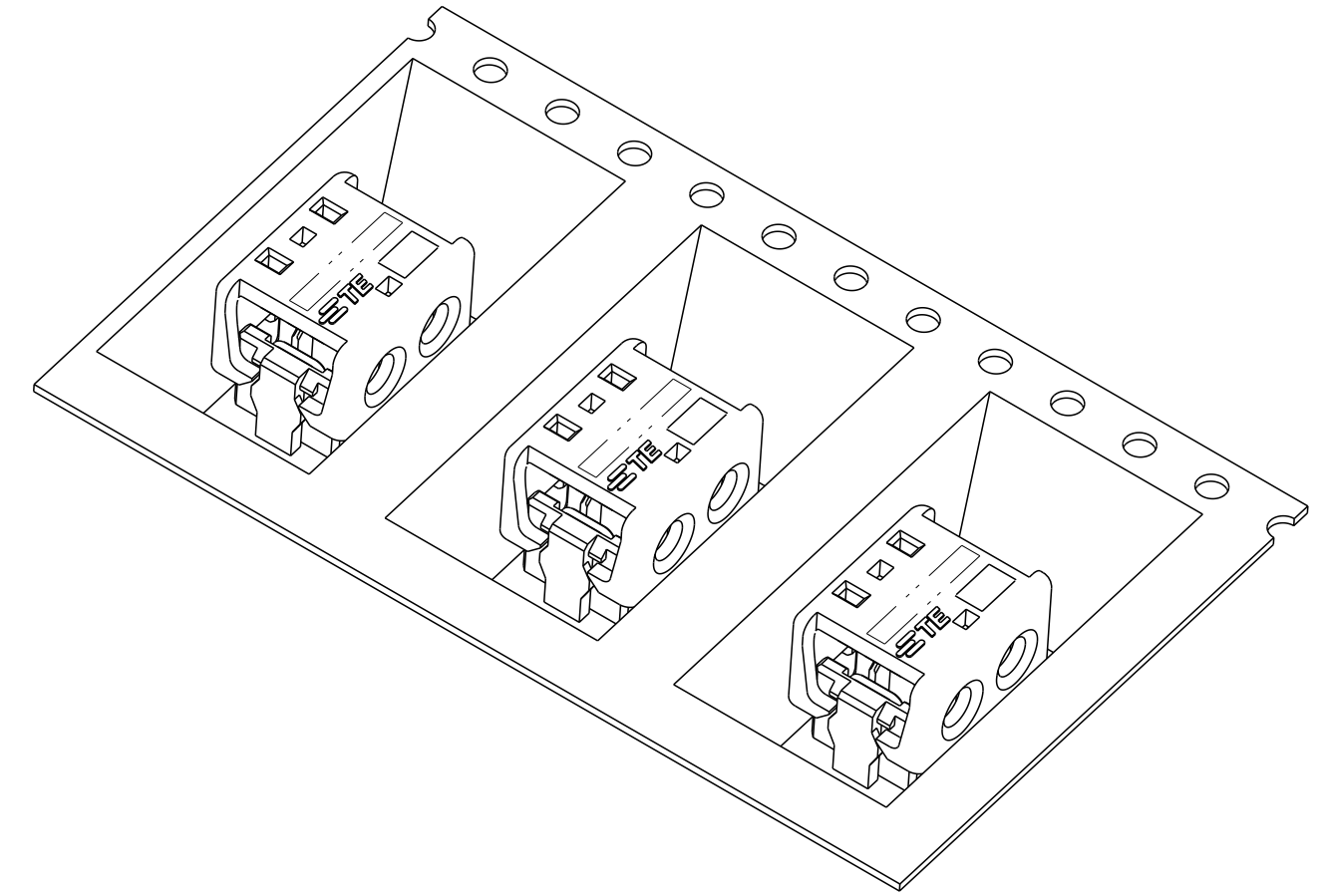
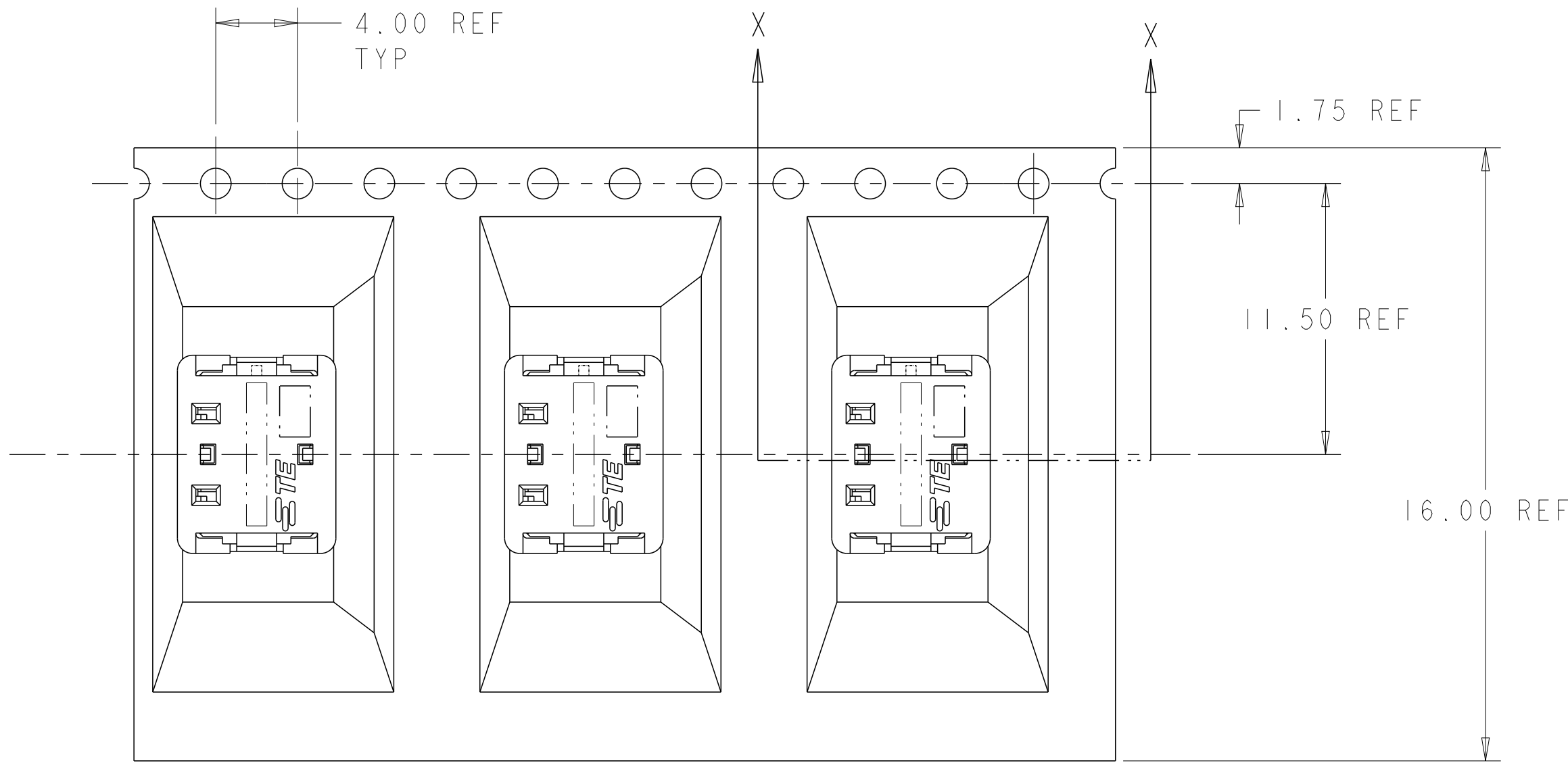


4 POSITION  
RECOMMENDED PAD LAYOUT  
SCALE 8:1

|  |  |                             |                 |  |
|--|--|-----------------------------|-----------------|--|
| THIS DRAWING IS A CONTROLLED DOCUMENT. |  | DWN<br>C DAILY<br>09DEC2008 | TE Connectivity |  |
|  |  | CHK<br>J DYER<br>09DEC2008  |                 |  |
| DIMENSIONS:<br>mm                      |  | APVD<br>-                   |                 | NAME<br>ASSEMBLY,<br>IDC SSL CONNECTOR,<br>SMT, CLOSED END |
| TOLERANCES UNLESS OTHERWISE SPECIFIED: |  | PRODUCT SPEC<br>108-2404    |                 | SIZE<br>114-13266  |
| 0 PLC ±                                |  | APPLICATION SPEC            |                 | CAGE CODE<br>A200779                                       |
| 1 PLC ±0.5                             |  | WEIGHT<br>-                 |                 | DRAWING NO<br>C-2106003                                    |
| 2 PLC ±0.13                            |  | MATERIAL<br>material_2      |                 | RESTRICTED TO<br>-   |
| 3 PLC ±                                |  | FINISH<br>finish_spec_2     |                 | SCALE<br>2:1   |
| 4 PLC ±                                |  | Customer Drawing            |                 | SHEET<br>1 OF 4  |
| ANGLES ±                               |  |                             |                 | REV<br>C   |
| FINISH                                 |  |                             |                 |  |


THIS DRAWING IS UNPUBLISHED. RELEASED FOR PUBLICATION 20  
 © COPYRIGHT 20 BY - ALL RIGHTS RESERVED.

| LOC |     | DIST        |  | REVISIONS |      |     |      |  |
|-----|-----|-------------|--|-----------|------|-----|------|--|
| P   | LTR | DESCRIPTION |  |           | DATE | DWN | APVD |  |
| -   | -   | SEE SHEET 1 |  |           | -    | -   | -    |  |
|     |     |             |  |           |      |     |      |  |
|     |     |             |  |           |      |     |      |  |



SECTION X-X

2106003-2 SHOWN IN POCKET TAPE

|  |  |                               |   |                              |
|--|--|-------------------------------|---|------------------------------|
| THIS DRAWING IS A CONTROLLED DOCUMENT. |  | DWN<br>C DAILY<br>09DEC2008   |  TE Connectivity |                              |
|  |  | CHK<br>J DYER<br>09DEC2008    |   |                              |
| DIMENSIONS:                            | TOLERANCES UNLESS OTHERWISE SPECIFIED:                                 | APVD<br>-                     | NAME<br>ASSEMBLY,<br>IDC SSL CONNECTOR,<br>SMT, CLOSED END  |                              |
| mm                                     | 0 PLC ±<br>1 PLC ±0.5<br>2 PLC ±0.13<br>3 PLC ±<br>4 PLC ±<br>ANGLES ± | PRODUCT SPEC<br>108-2404      | SIZE<br>A200779   |                              |
| MATERIAL                               | FINISH   | APPLICATION SPEC<br>114-13266 | DRAWING NO<br>C-2106003   | RESTRICTED TO<br>-           |
| material_2                             | finish_spec_2  | WEIGHT<br>-                   | Customer Drawing  | SCALE 2:1 SHEET 1 OF 4 REV C |



Компания «ЭлектроПласт» предлагает заключение долгосрочных отношений при поставках импортных электронных компонентов на взаимовыгодных условиях!

Наши преимущества:

- Оперативные поставки широкого спектра электронных компонентов отечественного и импортного производства напрямую от производителей и с крупнейших мировых складов;
- Поставка более 17-ти миллионов наименований электронных компонентов;
- Поставка сложных, дефицитных, либо снятых с производства позиций;
- Оперативные сроки поставки под заказ (от 5 рабочих дней);
- Экспресс доставка в любую точку России;
- Техническая поддержка проекта, помощь в подборе аналогов, поставка прототипов;
- Система менеджмента качества сертифицирована по Международному стандарту ISO 9001;
- Лицензия ФСБ на осуществление работ с использованием сведений, составляющих государственную тайну;
- Поставка специализированных компонентов (Xilinx, Altera, Analog Devices, Intersil, Interpoint, Microsemi, Aeroflex, Peregrine, Syfer, Eurofarad, Texas Instrument, Miteq, Cobham, E2V, MA-COM, Hittite, Mini-Circuits, General Dynamics и др.);

Помимо этого, одним из направлений компании «ЭлектроПласт» является направление «Источники питания». Мы предлагаем Вам помощь Конструкторского отдела:

- Подбор оптимального решения, техническое обоснование при выборе компонента;
- Подбор аналогов;
- Консультации по применению компонента;
- Поставка образцов и прототипов;
- Техническая поддержка проекта;
- Защита от снятия компонента с производства.



#### Как с нами связаться

**Телефон:** 8 (812) 309 58 32 (многоканальный)

**Факс:** 8 (812) 320-02-42

**Электронная почта:** [org@eplast1.ru](mailto:org@eplast1.ru)

**Адрес:** 198099, г. Санкт-Петербург, ул. Калинина, дом 2, корпус 4, литера А.