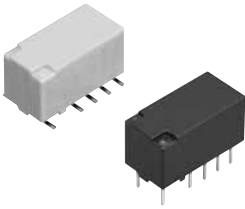


Small size, controlled 7.5A inrush current possible

TX RELAYS TH types



RoHS compliant

FEATURES

- 1. Small size, controlled 7.5A inrush current possible**
- 2. 2,000 V breakdown voltage between contact and coil**
The body block construction of the coil that is sealed at formation offers a high breakdown voltage of 2,000 V between contact and coil, and 1,000 V between open contacts.

- 3. Outstanding surge resistance.**
Surge breakdown voltage between open contacts:
1,500 V 10×160μ sec. (FCC part 68)
Surge breakdown voltage between contact and coil:
2,500 V 2×10μ sec. (Bellcore)
- 4. Nominal operating power: High sensitivity of 140mW**
By using the highly efficient polar magnetic circuit "seesaw balance mechanism", a nominal operating power of 140 mW (minimum operating power of 79 mW) has been achieved.
- 5. High contact capacity: 2 A 30 V DC**
- 6. Compact size**
15.0(L) × 7.4(W) × 8.2(H) .591(L) × .291(W) × .323(H)
- 7. Outstanding vibration and shock resistance.**
Functional shock resistance: 750 m/s²
Destructive shock resistance:
1,000 m/s²
Functional vibration resistance:
10 to 55 Hz (at double amplitude of 3.3 mm .130 inch)
Destructive vibration resistance:
10 to 55 Hz (at double amplitude of 5 mm .197 inch)

- 8. Sealed construction allows automatic washing.**
- 9. A range of surface-mount types is also available**
SA: Low-profile surface-mount terminal type
SS: Space saving surface-mount terminal type

TYPICAL APPLICATIONS

- 1. Air-conditioning control (solenoid load)**
- 2. Others, High-capacity control etc.**

ORDERING INFORMATION

TX **2** - - - - TH -

Contact arrangement
2: 2 Form C

Surface-mount availability
Nil: Standard PC board terminal type
SA: SA type
SS: SS type

Operating function
Nil: Single side stable
L: 1 coil latching
L2: 2 coil latching
LT: 2 coil latching

Terminal shape
Nil: Standard PC board terminal or surface-mount terminal

Nominal coil voltage (DC)*
1.5, 3, 4.5, 5, 6, 9, 12, 24, 48V

Contact material
TH: Power type (Ag+Au clad/stationary, movable)

Packing style
Nil: Tube packing
X: Tape and reel (picked from 1/3/4/5-pin side)
Z: Tape and reel packing (picked from the 8/9/10/12-pin side)

Notes: 1. *48 V coil type: Single side stable only
2. In case of 5 V transistor drive circuit, it is recommended to use 4.5 V type relay.

TYPES

1. Standard PC board terminal

| Contact arrangement | Nominal coil voltage | Single side stable | 1 coil latching | 2 coil latching (L2) | 2 coil latching (LT) |
|---------------------|----------------------|--------------------|-----------------|----------------------|----------------------|
| | | Part No. | Part No. | Part No. | Part No. |
| 2 Form C | 1.5V DC | TX2-1.5V-TH | TX2-L-1.5V-TH | TX2-L2-1.5V-TH | TX2-LT-1.5V-TH |
| | 3V DC | TX2-3V-TH | TX2-L-3V-TH | TX2-L2-3V-TH | TX2-LT-3V-TH |
| | 4.5V DC | TX2-4.5V-TH | TX2-L-4.5V-TH | TX2-L2-4.5V-TH | TX2-LT-4.5V-TH |
| | 5V DC | TX2-5V-TH | TX2-L-5V-TH | TX2-L2-5V-TH | TX2-LT-5V-TH |
| | 6V DC | TX2-6V-TH | TX2-L-6V-TH | TX2-L2-6V-TH | TX2-LT-6V-TH |
| | 9V DC | TX2-9V-TH | TX2-L-9V-TH | TX2-L2-9V-TH | TX2-LT-9V-TH |
| | 12V DC | TX2-12V-TH | TX2-L-12V-TH | TX2-L2-12V-TH | TX2-LT-12V-TH |
| | 24V DC | TX2-24V-TH | TX2-L-24V-TH | TX2-L2-24V-TH | TX2-LT-24V-TH |
| | 48V DC | TX2-48V-TH | — | — | — |

Standard packing: Tube: 40 pcs.; Case: 1,000 pcs.

2. Surface-mount terminal

1) Tube packing

| Contact arrangement | Nominal coil voltage | Single side stable | 1 coil latching | 2 coil latching (L2) | 2 coil latching (LT) |
|---------------------|----------------------|--------------------|-----------------|----------------------|----------------------|
| | | Part No. | Part No. | Part No. | Part No. |
| 2c | 1.5V DC | TX2S□-1.5V-TH | TX2S□-L-1.5V-TH | TX2S□-L2-1.5V-TH | TX2S□-LT-1.5V-TH |
| | 3V DC | TX2S□-3V-TH | TX2S□-L-3V-TH | TX2S□-L2-3V-TH | TX2S□-LT-3V-TH |
| | 4.5V DC | TX2S□-4.5V-TH | TX2S□-L-4.5V-TH | TX2S□-L2-4.5V-TH | TX2S□-LT-4.5V-TH |
| | 5V DC | TX2S□-5V-TH | TX2S□-L-5V-TH | TX2S□-L2-5V-TH | TX2S□-LT-5V-TH |
| | 6V DC | TX2S□-6V-TH | TX2S□-L-6V-TH | TX2S□-L2-6V-TH | TX2S□-LT-6V-TH |
| | 9V DC | TX2S□-9V-TH | TX2S□-L-9V-TH | TX2S□-L2-9V-TH | TX2S□-LT-9V-TH |
| | 12V DC | TX2S□-12V-TH | TX2S□-L-12V-TH | TX2S□-L2-12V-TH | TX2S□-LT-12V-TH |
| | 24V DC | TX2S□-24V-TH | TX2S□-L-24V-TH | TX2S□-L2-24V-TH | TX2S□-LT-24V-TH |
| | 48V DC | TX2S□-48V-TH | — | — | — |

□: For each surface-mounted terminal identification, input the following letter. SA type: A, SS type: S

Standard packing: Tube: 40 pcs.; Case: 1,000 pcs.

2) Tape and reel packing

| Contact arrangement | Nominal coil voltage | Single side stable | 1 coil latching | 2 coil latching (L2) | 2 coil latching (LT) |
|---------------------|----------------------|--------------------|-------------------|----------------------|----------------------|
| | | Part No. | Part No. | Part No. | Part No. |
| 2 Form C | 1.5V DC | TX2S□-1.5V-TH-Z | TX2S□-L-1.5V-TH-Z | TX2S□-L2-1.5V-TH-Z | TX2S□-LT-1.5V-TH-Z |
| | 3V DC | TX2S□-3V-TH-Z | TX2S□-L-3V-TH-Z | TX2S□-L2-3V-TH-Z | TX2S□-LT-3V-TH-Z |
| | 4.5V DC | TX2S□-4.5V-TH-Z | TX2S□-L-4.5V-TH-Z | TX2S□-L2-4.5V-TH-Z | TX2S□-LT-4.5V-TH-Z |
| | 5V DC | TX2S□-5V-TH-Z | TX2S□-L-5V-TH-Z | TX2S□-L2-5V-TH-Z | TX2S□-LT-5V-TH-Z |
| | 6V DC | TX2S□-6V-TH-Z | TX2S□-L-6V-TH-Z | TX2S□-L2-6V-TH-Z | TX2S□-LT-6V-TH-Z |
| | 9V DC | TX2S□-9V-TH-Z | TX2S□-L-9V-TH-Z | TX2S□-L2-9V-TH-Z | TX2S□-LT-9V-TH-Z |
| | 12V DC | TX2S□-12V-TH-Z | TX2S□-L-12V-TH-Z | TX2S□-L2-12V-TH-Z | TX2S□-LT-12V-TH-Z |
| | 24V DC | TX2S□-24V-TH-Z | TX2S□-L-24V-TH-Z | TX2S□-L2-24V-TH-Z | TX2S□-LT-24V-TH-Z |
| | 48V DC | TX2S□-48V-TH-Z | — | — | — |

□: For each surface-mounted terminal identification, input the following letter. SA type: A, SS type: S

Standard packing: Tape and reel: 500 pcs.; Case: 1,000 pcs.

Note: Tape and reel packing symbol "Z" is not marked on the relay. "X" type tape and reel packing (picked from 1/2/3/4-pin side) is also available.

RATING

1. Coil data

1) Single side stable

| Nominal coil voltage | Pick-up voltage (at 20°C 68°F) | Drop-out voltage (at 20°C 68°F) | Nominal operating current [±10%] (at 20°C 68°F) | Coil resistance [±10%] (at 20°C 68°F) | Nominal operating power | Max. applied voltage (at 20°C 68°F) |
|----------------------|--|--|---|---------------------------------------|-------------------------|-------------------------------------|
| 1.5V DC | 75%V or less of nominal voltage* (Initial) | 10%V or more of nominal voltage* (Initial) | 93.8mA | 16Ω | 140mW | 150%V of nominal voltage |
| 3V DC | | | 46.7mA | 64.3Ω | | |
| 4.5V DC | | | 31mA | 145Ω | | |
| 5V DC | | | 28.1mA | 178Ω | | |
| 6V DC | | | 23.3mA | 257Ω | | |
| 9V DC | | | 15.5mA | 579Ω | | |
| 12V DC | | | 11.7mA | 1,028Ω | | |
| 24V DC | | | 5.8mA | 4,114Ω | | |
| 48V DC | | | 5.6mA | 8,533Ω | 270mW | 120%V of nominal voltage |

TX-TH

2) 1 coil latching

| Nominal coil voltage | Set voltage (at 20°C 68°F) | Reset voltage (at 20°C 68°F) | Nominal operating current [$\pm 10\%$] (at 20°C 68°F) | Coil resistance [$\pm 10\%$] (at 20°C 68°F) | Nominal operating power | Max. applied voltage (at 20°C 68°F) |
|----------------------|--|--|---|---|-------------------------|-------------------------------------|
| 1.5V DC | 75%V or less of nominal voltage* (Initial) | 75%V or less of nominal voltage* (Initial) | 66.7mA | 22.5 Ω | 100mW | 150%V of nominal voltage |
| 3V DC | | | 33.3mA | 90 Ω | | |
| 4.5V DC | | | 22.2mA | 202.5 Ω | | |
| 5V DC | | | 20mA | 250 Ω | | |
| 6V DC | | | 16.7mA | 360 Ω | | |
| 9V DC | | | 11.1mA | 810 Ω | | |
| 12V DC | | | 8.3mA | 1,440 Ω | | |
| 24V DC | | | 4.2mA | 5,760 Ω | | |

3) 2 coil latching (L2, LT)

| Nominal coil voltage | Set voltage (at 20°C 68°F) | Reset voltage (at 20°C 68°F) | Nominal operating current [$\pm 10\%$] (at 20°C 68°F) | | Coil resistance [$\pm 10\%$] (at 20°C 68°F) | | Nominal operating power | | Max. applied voltage (at 20°C 68°F) |
|----------------------|--|--|---|------------|---|----------------|-------------------------|------------|-------------------------------------|
| | | | Set coil | Reset coil | Set coil | Reset coil | Set coil | Reset coil | |
| 1.5V DC | 75%V or less of nominal voltage* (Initial) | 75%V or less of nominal voltage* (Initial) | 93.8mA | 93.8mA | 16 Ω | 16 Ω | 140mW | 140mW | 150%V of nominal voltage |
| 3V DC | | | 46.7mA | 46.7mA | 64.3 Ω | 64.3 Ω | | | |
| 4.5V DC | | | 31mA | 31mA | 145 Ω | 145 Ω | | | |
| 5V DC | | | 28.1mA | 28.1mA | 178 Ω | 178 Ω | | | |
| 6V DC | | | 23.3mA | 23.3mA | 257 Ω | 257 Ω | | | |
| 9V DC | | | 15.5mA | 15.5mA | 579 Ω | 579 Ω | | | |
| 12V DC | | | 11.7mA | 11.7mA | 1,028 Ω | 1,028 Ω | | | |
| 24V DC | | | 5.8mA | 5.8mA | 4,114 Ω | 4,114 Ω | | | |

*Pulse drive (JIS C 5442-1986)

2. Specifications

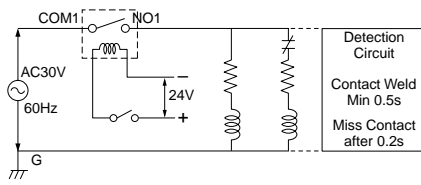
| Characteristics | Item | Specifications | |
|--|--|--|---|
| Contact | Arrangement | 2 Form C | |
| | Initial contact resistance, max. | Max. 100 m Ω (By voltage drop 6 V DC 1A) | |
| | Contact material | Ag+Au plating | |
| Rating | Nominal switching capacity | 2 A 30 V DC, 0.5 A 125 V AC (resistive load) | |
| | Max. switching power | 60 W, 60 VA (resistive load) | |
| | Max. switching voltage | 220V DC, 250V AC | |
| | Max. switching current | 7.5 A (When used at 7.5 A. Regarding connection method, you must follow the precaution, below*.) | |
| | Min. switching capacity (Reference value)* ¹ | 10 μ A 10mV DC | |
| | Nominal operating power | Single side stable | 140 mW (1.5 to 24 V DC), 270 mW (48 V DC) |
| 1 coil latching | | 100 mW (1.5 to 24 V DC) | |
| 2 coil latching | | 140 mW (1.5 to 24 V DC) | |
| Electrical characteristics | Insulation resistance (Initial) | Min. 1,000M Ω (at 500V DC) Measurement at same location as "Initial breakdown voltage" section. | |
| | Breakdown voltage (Initial) | Between open contacts | 1,000 Vrms for 1min. (Detection current: 10mA) |
| | | Between contact and coil | 2,000 Vrms for 1min. (Detection current: 10mA) |
| | | Between contact sets | 1,000 Vrms for 1min. (Detection current: 10mA) |
| | Temperature rise (at 20°C 68°F) | Max. 50°C (By resistive method, nominal coil voltage applied to the coil; contact carrying current: 2A.) | |
| | Surge breakdown voltage (Initial) | Between open contacts | 1,500 V (10 \times 160 μ s) (FCC Part 68) |
| | | Between contacts and coil | 2,500 V (2 \times 10 μ s) (Telcordia) |
| Operate time [Set time] (at 20°C 68°F) | Max. 4 ms [Max. 4 ms] (Nominal coil voltage applied to the coil, excluding contact bounce time.) | | |
| Release time [Reset time] (at 20°C 68°F) | Max. 4 ms [Max. 4 ms] (Nominal coil voltage applied to the coil, excluding contact bounce time.) (without diode) | | |
| Mechanical characteristics | Shock resistance | Functional | Min. 750 m/s ² (Half-wave pulse of sine wave: 6 ms; detection time: 10 μ s.) |
| | | Destructive | Min. 1,000 m/s ² (Half-wave pulse of sine wave: 6 ms.) |
| | Vibration resistance | Functional | 10 to 55 Hz at double amplitude of 3.3 mm (Detection time: 10 μ s.) |
| | | Destructive | 10 to 55 Hz at double amplitude of 5 mm |
| Expected life | Mechanical | Min. 10 ⁸ (at 180 cpm) | |
| | Electrical | Min. 10 ⁵ (2 A 30 V DC resistive), 5 \times 10 ⁵ (1 A 30 V DC resistive), Min. 10 ⁵ (0.5 A 125 V AC resistive) (at 20 cpm) Min. 2 \times 10 ⁵ (7.5 A inrush (250 ms)/1.5 A normal 30 V AC (cos ϕ = 0.4)) (ON/OFF = 1s/9s) | |
| Conditions | Conditions for operation, transport and storage* ² | Ambient temperature: -40°C to +85°C (up to 24 V coil) -40°F to +185°F [-40°C to +70°C (48 V coil) -40°F to +158°F]; Humidity: 5 to 85% R.H. (Not freezing and condensing at low temperature) | |
| | Max. operating speed (at rated load) | 20 cpm | |
| Unit weight | | Approx. 2 g .071 oz | |

Notes: *1 This value can change due to the switching frequency, environmental conditions, and desired reliability level, therefore it is recommended to check this with the actual load.

*2 Refer to 6. Conditions for operation, transport and storage mentioned in AMBIENT ENVIRONMENT (Page 24).

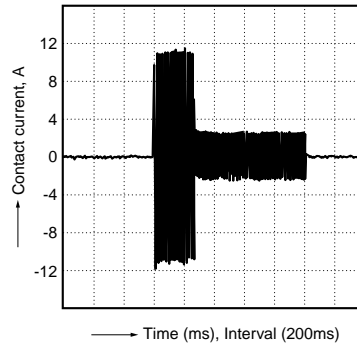
REFERENCE DATA

1. Electrical life (2×10^5 operation is possible)
 Tested sample: TX2SA-24V-TH, 6 pcs.
 Switching frequency: ON:OFF = 1s:9s
 Ambient temperature: 25°C 77°F
 Circuit



Condition: 30 V AC
 Inrush current 7.5 A (execution value),
 inrush time 250 ms
 Normal current 1.5 A (execution value),
 (inductive load $\cos\phi = 0.4$)

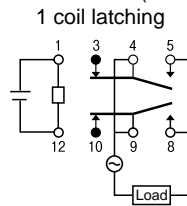
Inrush current wave form vs time



***Precaution**

When using at 7.5 A, connection of NO (pin #5 and #8) and COM (pin #4 and #9) in the circuit is required.

Pin layout and schematic (BOTTOM VIEW)



For general REFERENCE DATA, DIMENSIONS and NOTES, please refer to the “TX Relay”.

Mouser Electronics

Authorized Distributor

Click to View Pricing, Inventory, Delivery & Lifecycle Information:

Panasonic:

[TX2SA-L2-6V-X](#) [TX2SA-LT-5V-TH](#) [TX2-LT-12V-TH](#) [TX2-LT-24V-TH](#) [TX2-LT-3V-TH](#) [TX2-LT-4.5V-TH](#) [TX2-LT-5V](#)
[TX2SA-LT-4.5V-TH](#) [TX2SS-LT-12V-TH](#) [TX2SS-LT-24V-TH](#) [TX2SS-LT-3V-TH](#) [TX2SS-LT-4.5V-TH](#) [TX2SA-LT-1.5V-](#)
[TH](#) [TX2SA-LT-24V-TH](#) [TX2SA-LT-3V-TH](#) [TX2SA-LT-12V-TH](#) [TX2-LT-6V-TH](#) [TX2SA-LT-6V-TH-Z](#) [TX2-9V-TH](#) [TX2-](#)
[12V-TH](#) [TX2-LT-1.5V-TH](#) [TX2-5V-TH](#) [TX2SA-LT-5V-TH-Z](#) [TX2SA-4.5V-TH](#) [TX2-LT-5V-TH](#) [TX2SA-LT-6V-TH](#) [TX2-](#)
[1.5V-TH](#) [TX2-LT-9V-TH](#) [TX2SS-LT-4.5V-TH-Z](#) [TX2SA-LT-3V-TH-Z](#) [TX2SS-L-24V-TH-Z](#) [TX2SS-L-4.5V-TH-Z](#)



Компания «ЭлектроПласт» предлагает заключение долгосрочных отношений при поставках импортных электронных компонентов на взаимовыгодных условиях!

Наши преимущества:

- Оперативные поставки широкого спектра электронных компонентов отечественного и импортного производства напрямую от производителей и с крупнейших мировых складов;
- Поставка более 17-ти миллионов наименований электронных компонентов;
- Поставка сложных, дефицитных, либо снятых с производства позиций;
- Оперативные сроки поставки под заказ (от 5 рабочих дней);
- Экспресс доставка в любую точку России;
- Техническая поддержка проекта, помощь в подборе аналогов, поставка прототипов;
- Система менеджмента качества сертифицирована по Международному стандарту ISO 9001;
- Лицензия ФСБ на осуществление работ с использованием сведений, составляющих государственную тайну;
- Поставка специализированных компонентов (Xilinx, Altera, Analog Devices, Intersil, Interpoint, Microsemi, Aeroflex, Peregrine, Syfer, Eurofarad, Texas Instrument, Miteq, Cobham, E2V, MA-COM, Hittite, Mini-Circuits, General Dynamics и др.);

Помимо этого, одним из направлений компании «ЭлектроПласт» является направление «Источники питания». Мы предлагаем Вам помощь Конструкторского отдела:

- Подбор оптимального решения, техническое обоснование при выборе компонента;
- Подбор аналогов;
- Консультации по применению компонента;
- Поставка образцов и прототипов;
- Техническая поддержка проекта;
- Защита от снятия компонента с производства.



Как с нами связаться

Телефон: 8 (812) 309 58 32 (многоканальный)

Факс: 8 (812) 320-02-42

Электронная почта: org@eplast1.ru

Адрес: 198099, г. Санкт-Петербург, ул. Калинина, дом 2, корпус 4, литера А.