

### TYPICAL SWITCH ORDERING EXAMPLE

**MB24**

**11**

**A2**

**G**

**40**

**F**

**A**

#### Poles & Circuits

11	SPDT	ON	(ON)
61	DPDT	ON	(ON)

( ) = Momentary

#### Contact Materials & Ratings

W	Silver Rated 3A @ 125V AC
G	Gold Rated 0.4VA max @ 28V AC/DC max
A	Gold over Silver Rated 3A @ 125V AC & 0.4VA max @ 28V AC/DC max

#### Caps

F	.201" (5.1mm) Dia.
H	.295" (7.5mm) Dia.

#### Cap Colors

A	Black
B	White
C	Red

#### Bushings

A2	.280" (7.1mm) Smooth with Keyway
A1	.280" (7.1mm) Threaded with Keyway
E2	.285" (7.24mm) Smooth with D Flat
E1	.285" (7.24mm) Threaded with D Flat
S2	.350" (8.9mm) Smooth with Keyway
S1	.350" (8.9mm) Threaded with Keyway

#### Terminals

##### With Bracket

13	.250" (6.35mm) Straight PC with .465" (11.8mm) Bracket
15	.425" (10.8mm) Straight PC with .630" (16.0mm) Bracket
17	.964" (24.5mm) Straight PC with 1.150" (29.2mm) Bracket

##### With Reinforced Bracket

23	.250" (6.35mm) Straight PC with .465" (11.8mm) Bracket
25	.425" (10.8mm) Straight PC with .630" (16.0mm) Bracket
26	.750" (19.05mm) Straight PC with .953" (24.2mm) Bracket

##### With Terminal Support

30	Right Angle PC
40	Vertical PC

#### IMPORTANT:



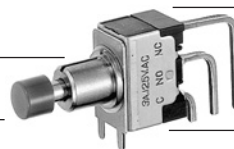
Switches are supplied without UL, cULus & CSA marking unless specified. **UL, cULus & CSA recognized only when ordered with marking on the switch.**

Specific models, ratings, & ordering instructions are noted on General Specifications page.

#### DESCRIPTION FOR TYPICAL ORDERING EXAMPLE

**MB2411A2G40-FA**

.280" (7.1mm) Smooth Bushing with Keyway  
Black .201" (5.1mm) Diameter Cap



SPDT  
ON-(ON) Circuit  
Vertical PC Terminals  
Gold Contacts with 0.4VA Rating

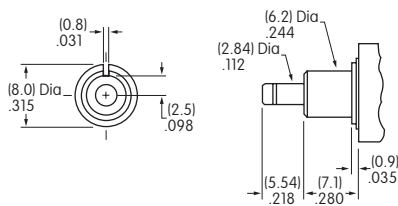
## POLES & CIRCUITS

Pole	Model	Plunger Position ( ) = Momentary		Connected Terminals		Throw & Switch Schematics
		Normal	Down	Normal	Down	
						Note: Terminal numbers are not actually on the switch. * When using terminal code 32, connected terminals and schematic are reversed.
SP	*MB2411	ON	(ON)	1-3	1-2	
DP	MB2461	ON	(ON)	1-3 4-6	1-2 4-5	

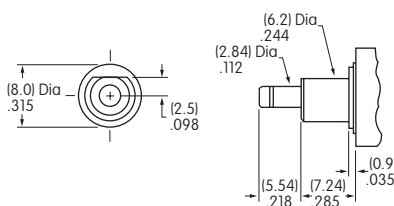
## BUSHINGS

Note: Plunger selection is not required for MB2400 pushbuttons.  
The plunger can be used with or without a cap.

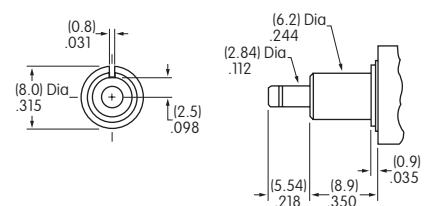
**A2** .280" (7.1mm)  
Smooth with Keyway



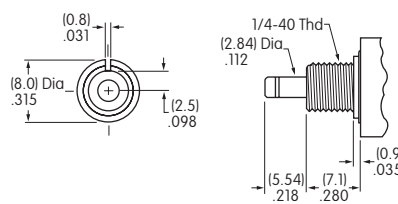
**E2** .285" (7.24mm)  
Smooth with D Flat



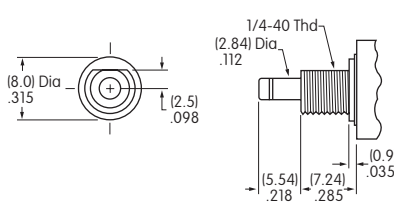
**S2** .350" (8.9mm)  
Smooth with Keyway



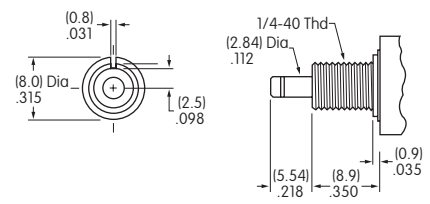
**A1** .280" (7.1mm)  
Threaded with Keyway



**E1** .285" (7.24mm)  
Threaded with D Flat



**S1** .350" (8.9mm)  
Threaded with Keyway



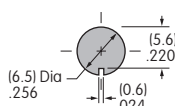
Maximum Panel Thickness with Standard Hardware: .068" (1.74mm)

Maximum Panel Thickness with Standard Hardware: .068" (1.74mm)

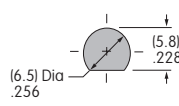
Maximum Panel Thickness with Standard Hardware: .134" (3.40mm)

### Panel Cutouts

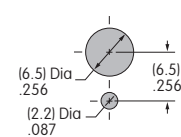
For A1, A2, S1, or S2 Bushing with Keyway



For E1 or E2 Bushing with D Flat



With Optional Locking Ring



Standard hardware includes 2 hex nuts & 1 lockwasher.  
Hardware is illustrated following the Typical Switch Dimension drawings.

Toggles  
 Rockers  
 Pushbuttons  
 Illuminated PB  
 Programmable  
 Keylocks  
 Rotaries  
 Slides  
 Tactiles  
 Tilt  
 Touch  
 Indicators  
 Accessories  
 Supplement

### CONTACT MATERIALS & RATINGS

**W**

Silver over Silver

Power Level

3A @ 125V AC

**G**

Gold over Brass or Copper

Logic Level

0.4VA maximum @ 28V AC/DC maximum

Note: Complete explanation of operating range in Supplement section.

**A**

Gold over Silver

Power Level  
or Logic Level

3A @ 125V AC  
or 0.4VA maximum @ 28V AC/DC maximum

Note: This dual rated option is suitable when two or more identical switches are used in logic and in power circuits within the same application. See Supplement section for complete explanation of dual rating and operating range.

### TERMINALS

#### Straight PC Mount with Bracket

**13**

.250" (6.35mm)  
Terminal with  
.465" (11.8mm)  
Bracket

**15**

.425" (10.8mm)  
Terminal with  
.630" (16.0mm)  
Bracket

**17**

.964" (24.5mm)  
Terminal with  
1.150" (29.2mm)  
Bracket

**23**

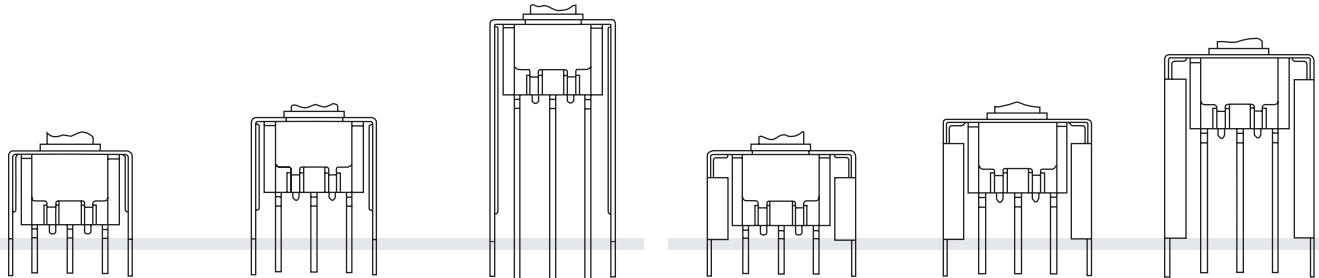
.250" (6.35mm)  
Terminal with  
.465" (11.8mm)  
Bracket

**25**

.425" (10.8mm)  
Terminal with  
.630" (16.0mm)  
Bracket

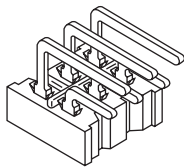
**26**

.750" (19.05mm)  
Terminal with  
.953" (24.2mm)  
Bracket



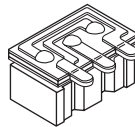
**30**

Right Angle PC



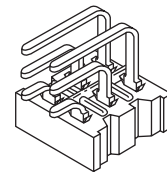
**32**

Right Angle PCB with Reverse Circuit  
Available only in single pole with  
0.4VA rating (code G)



**40**

Vertical PC



PCB footprints are on the following Typical Switch Dimension pages.

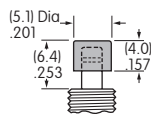
### CAPS & CAP COLORS

**F**

AT475  
.201" (5.1mm)  
Diameter Cap

Material: Polyamide

Finish: Glossy

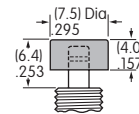


**H**

AT496  
.295" (7.5mm)  
Diameter Cap

Material: Polyamide

Finish: Glossy



Cap Colors  
Available:

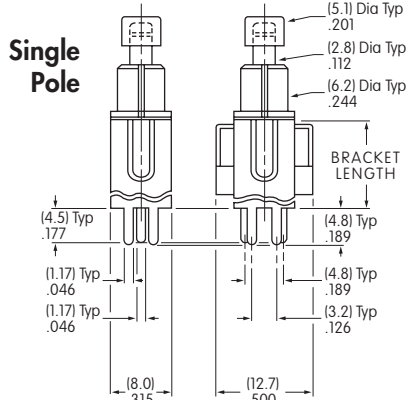
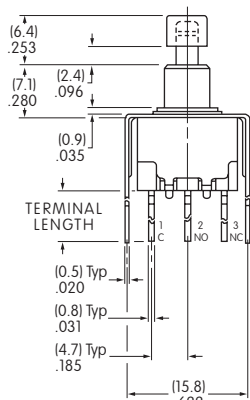
**A** Black

**B** White

**C** Red

## TYPICAL SWITCH DIMENSIONS

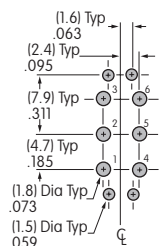
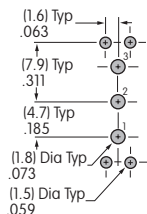
### Straight PC • Bracket



Double Pole

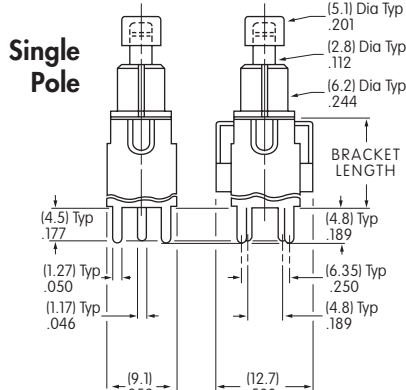
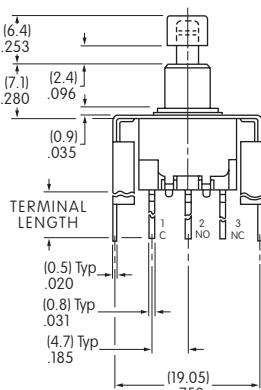


**MB2411A2G13-FA**



Terminal Code:	Terminal Length:	Bracket Length:
<b>13</b>	.250 (6.35mm)	.465 (11.8mm)
<b>15</b>	.425 (10.8mm)	.630 (16.0mm)
<b>17</b>	.964 (24.5mm)	1.150 (29.2mm)

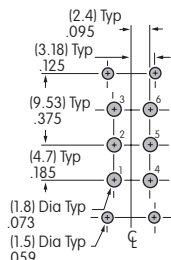
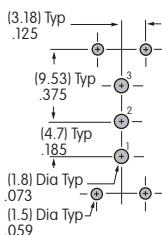
### Straight PC • Reinforced Bracket



Double Pole



**MB2411A2G23-FA**



Terminal Code:	Terminal Length:	Bracket Length:
<b>23</b>	.250 (6.35mm)	.465 (11.8mm)
<b>25</b>	.425 (10.8mm)	.630 (16.0mm)
<b>26</b>	.750 (19.05mm)	.953 (24.2mm)

Toggles

Rockers

Pushbuttons

Illuminated PB

Programmable

Keylocks

Rotaries

Slides

Tactiles

Tilt

Touch

Indicators

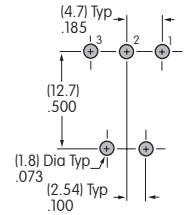
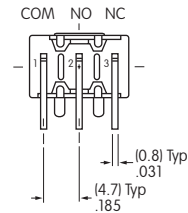
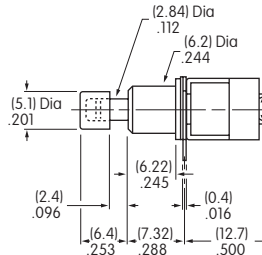
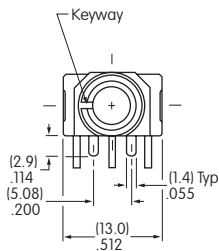
Accessories

Supplement

## TYPICAL SWITCH DIMENSIONS

### Right Angle PC

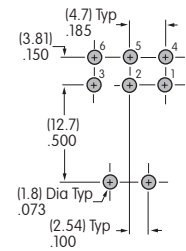
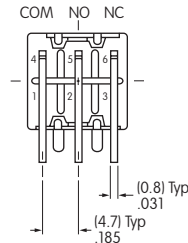
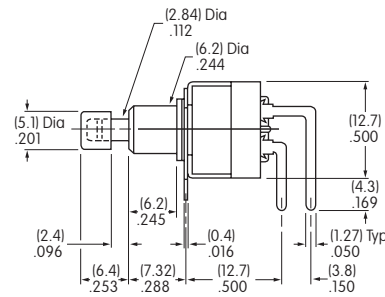
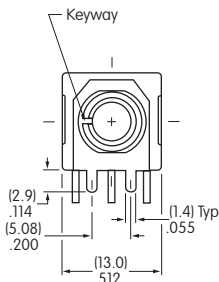
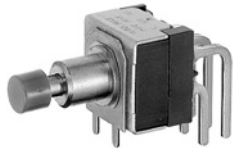
### Single Pole



MB2411A2G30-FA

### Right Angle PC

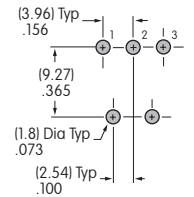
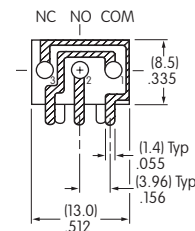
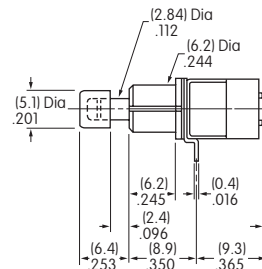
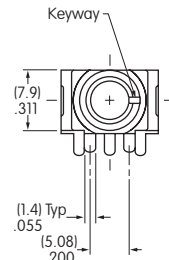
### Double Pole



MB2461A2G30-FA

### Right Angle PCB

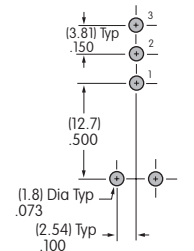
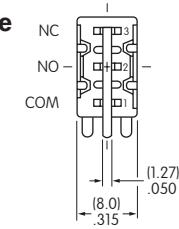
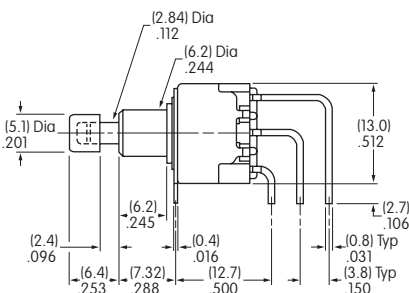
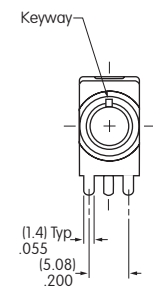
### Single Pole • Reverse Circuit



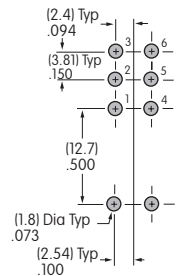
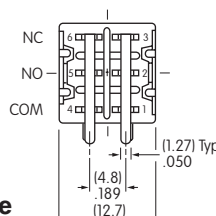
MB2411A2G32-FA

### Vertical PC

### Single Pole



### Double Pole



MB2411A2G40-FA

Toggles

Rockers

Pushbuttons

Illuminated PB

Programmable

Keylocks

Rotaries

Slides

Tactiles

Tilt

Touch

Indicators

Accessories

Supplement

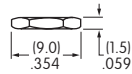
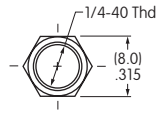
## HARDWARE

### Standard Hardware

#### AT513H Inch Threaded Hexagon Nut

2 included with each switch

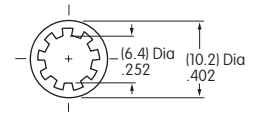
Material:  
Brass with Nickel Plating



#### AT509 Lockwasher

1 included with each switch

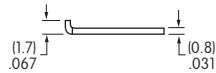
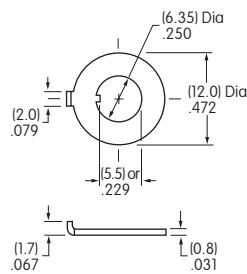
Material:  
Steel with Zinc/Chromate



### Optional Hardware

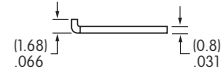
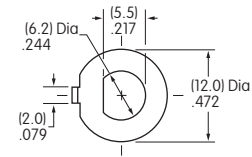
#### AT507H Locking Ring for A1 or S1 Bushing

Material:  
Steel with Zinc/Chromate



#### AT515 Locking Ring for E1 Bushing

Material:  
Steel with Zinc/Chromate



Toggles

Rockers

Pushbuttons

Illuminated PB

Programmable

Keylocks

Rotaries

Slides

Tactiles

Tilt

Touch

Indicators

Accessories

Supplement



Компания «ЭлектроПласт» предлагает заключение долгосрочных отношений при поставках импортных электронных компонентов на взаимовыгодных условиях!

Наши преимущества:

- Оперативные поставки широкого спектра электронных компонентов отечественного и импортного производства напрямую от производителей и с крупнейших мировых складов;
- Поставка более 17-ти миллионов наименований электронных компонентов;
- Поставка сложных, дефицитных, либо снятых с производства позиций;
- Оперативные сроки поставки под заказ (от 5 рабочих дней);
- Экспресс доставка в любую точку России;
- Техническая поддержка проекта, помощь в подборе аналогов, поставка прототипов;
- Система менеджмента качества сертифицирована по Международному стандарту ISO 9001;
- Лицензия ФСБ на осуществление работ с использованием сведений, составляющих государственную тайну;
- Поставка специализированных компонентов (Xilinx, Altera, Analog Devices, Intersil, Interpoint, Microsemi, Aeroflex, Peregrine, Syfer, Eurofarad, Texas Instrument, Miteq, Cobham, E2V, MA-COM, Hittite, Mini-Circuits, General Dynamics и др.);

Помимо этого, одним из направлений компании «ЭлектроПласт» является направление «Источники питания». Мы предлагаем Вам помощь Конструкторского отдела:

- Подбор оптимального решения, техническое обоснование при выборе компонента;
- Подбор аналогов;
- Консультации по применению компонента;
- Поставка образцов и прототипов;
- Техническая поддержка проекта;
- Защита от снятия компонента с производства.



#### Как с нами связаться

**Телефон:** 8 (812) 309 58 32 (многоканальный)

**Факс:** 8 (812) 320-02-42

**Электронная почта:** [org@eplast1.ru](mailto:org@eplast1.ru)

**Адрес:** 198099, г. Санкт-Петербург, ул. Калинина, дом 2, корпус 4, литера А.