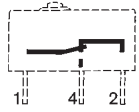


General specifications

Layout



Components

Material

- Case : polyester UL 94 VO
- Button : glass-filled polyamide
- Contacts : AgNi, gold-plated AgNi (dual-current)
- Terminals : copper-nickel

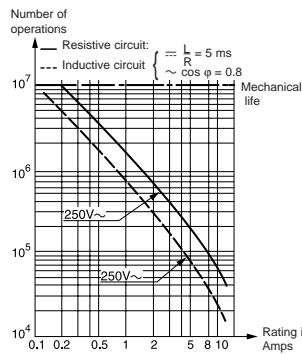
Actuators

- flat : stainless steel
- roller : stainless steel with polyamide roller

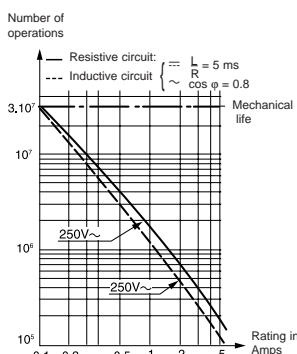
Approvals: NF - UL - cUL

Operating curve

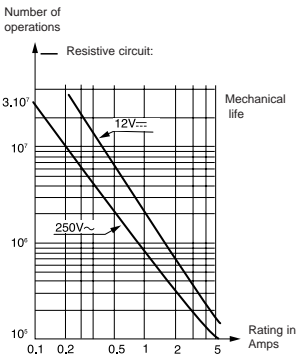
For type 83 170 0



For type 83 170 4



For type 83 170 9



Model 83 170 9 is designed to operate equally well on dual-current (1 mA 4 V minimum) or medium-current (5 A maximum) circuits. However, a given product should only be used to switch one type of circuit during its working life.

Types

| Part numbers for standard products (no lever) terminal type | |
|---|---|
| | 1 |
| | 2 |
| | 3 |

Features

Electrical characteristics

| | Nominal | A |
|-------------------------|---------|---|
| Current rating at 250 V | | |
| | Thermal | A |

Mechanical characteristics

| | |
|-----------------------------------|------------|
| Operating force - max. | N (oz.) |
| Release force - min. | N (oz.) |
| Total travel force - max. | N (oz.) |
| Permitted overtravel force - max. | N (oz.) |
| Maximum rest position | mm (in.) |
| Tripping point | mm (in.) |
| Differential travel | mm (in.) |
| Overtravel - min. | mm (in.) |
| Ambient operating temperature | °C |
| Mechanical endurance | Operations |
| Contact gap | mm (in.) |
| Weight | g (oz.) |

Contact type

- C** (Form C) SPDT
- B** (Form B) SPNC not available in PC terminals
- A** (Form A) SPNO not available in PC terminals

Connections

Actuators and mounting positions

Part numbers for standard actuators

| | |
|--------------------|----------|
| Actuators – Length | mm (in.) |
|--------------------|----------|

Mounting positions

| | |
|----------------|----------|
| Coefficient | |
| Tripping point | mm (in.) |

Mounting positions

Except where otherwise indicated, actuators are supplied unmounted. For factory mounting, specify mounting position L or R.

- **To calculate force** : take the force quoted for the switch and divide by the coefficient given in the table.
- **To calculate travel** : take the travel quoted for the switch and multiply by the same coefficient.

Mounting accessories for PCB mounting: 5 / 6 / 7 / 8

See page 3/9.

Other information

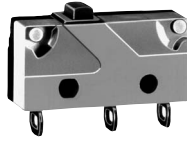
For other forces, actuators, connections and temperatures, please consult us.

Normally stocked items

Catalog products produced to order

Products and specifications subject to change without notice.

Order/Technical Support – Tel: (800) 677-5311 / FAX: (800) 677-3865 / www.crouzet-usa.com



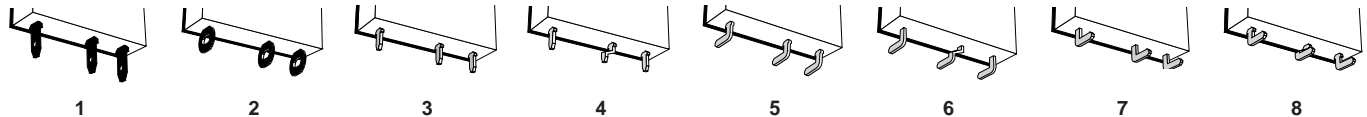
1

| 83170.0 | 83170.4 | 83170.9 | 83170.4 SP 4967 | 83170.4 | 83170.9 |
|---|---|---|---|---|---|
| 831700C1.0 | 831704C1.0 | 831709C1.0 | 831704C2.MBSP | 831704C1.MB | 831709C1.MB |
| 831700C2.0 | 831704C2.0 | 831709C2.0 | 831704C3.MBSP | 831704C2.MB | 831709C2.MB |
| 831700C3.0 | 831704C3.0 | 831709C3.0 | 831704C1.MBSP | 831704C3.MB | 831709C3.MB |
| High current | Standard | Low current | High force | Standard | Low current |
| 10 | 5 | 0.1 | 5 | 5 | 0.1 |
| 12.5 | 6 | | 6 | 6 | |
| 1.5 (5.3) | 0.6 (2.2) | 0.6 (2.2) | 1.5 (5.3) | 0.6 (2.2) | 0.6 (2.2) |
| 0.3 (1) | 0.1 (.04) | 0.1 (.04) | 0.3 (1) | 0.1 (.04) | 0.1 (.04) |
| 1.8 (6.3) | 1 (3.5) | 1 (3.5) | 1.8 (6.3) | 1 (3.5) | 1 (3.5) |
| 10 (35.3) | 10 (35.3) | 10 (35.3) | 10 (35.3) | 10 (35.3) | 10 (35.3) |
| 9.2 (.36) | 9.2 (.36) | 9.2 (.36) | 10.8 (.425) | 10.8 (.425) | 10.8 (.425) |
| 8.4 ^{+0.3} (.33 ^{+0.01}) | 8.4 ^{+0.3} (.33 ^{+0.01}) | 8.4 ^{+0.3} (.33 ^{+0.01}) | 9.9 ^{+0.3} (.39 ^{+0.01}) | 9.9 ^{+0.3} (.39 ^{+0.01}) | 9.9 ^{+0.3} (.39 ^{+0.01}) |
| 0.15 (.006) | 0.15 (.006) | 0.15 (.006) | 0.15 (.006) | 0.15 (.006) | 0.15 (.006) |
| 0.5 (.02) | 0.5 (.02) | 0.5 (.02) | 0.5 (.02) | 0.5 (.02) | 0.5 (.02) |
| -20 to130 (-4 to 266) | -20 to130 (-4 to 266) | -20 to130 (-4 to 266) | -20 to130 (-4 to 266) | -20 to130 (-4 to 266) | -20 to130 (-4 to 266) |
| 10 ⁷ | 3.10 ⁷ | 3.10 ⁷ | 10 ⁶ | 10 ⁶ | 10 ⁶ |
| 0.4 (.016) | 0.4 (.016) | 0.4 (.016) | 0.4 (.016) | 0.4 (.016) | 0.4 (.016) |
| 1.7 (.06) | 1.7 (.06) | 1.7 (.06) | 1.7 (.06) | 1.7 (.06) | 1.7 (.06) |

2

| C | C | C | C | C | C |
|---|---|---|---|---|---|
| B | B | B | B | B | B |
| A | A | A | A | A | A |

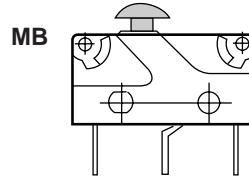
3



4

| A 79 253 327 | B 79 253 326 | C 79 253 328 | E 79 218 454 | F 79 253 329 |
|--|---|---|---|---|
| Flat 170A R18.3 (.72) | Flat 170A R24 (.94) | Flat 170A R41 (1.61) | Roller 170E R20 (.79) | Dummy roller 170F R19.5 (.77) |
| | | | | |
| L 3 10.4 ^{+1.2} (.41 ^{+0.05}) | L 4 11.1 ^{+1.2} (.44 ^{+0.05}) | L 7 13.2 ^{+2.5} (.52 ⁺¹) | L 3 15.4 ^{+1.2} (.61 ^{+0.05}) | L 3 13 ^{+1.2} (.51 ^{+0.05}) |
| R 1.5 9.2 ^{+0.6} (.36 ^{+0.24}) | R 2 9.6 ^{+0.6} (.38 ^{+0.24}) | R 3.5 10.7 ^{+1.2} (.42 ^{+0.05}) | R 1.5 14.5 ^{+0.6} (.57 ^{+0.24}) | R 1.5 12 ^{+0.6} (.47 ^{+0.24}) |

| D 79 218 491 | L 79 218 493 |
|---|----------------------------------|
| Screw 170D R20 (.79) | Transverse roller 170L R20 (.79) |
| | |
| Characteristics available upon request. | |



Ø No Actuator

5

To order please specify :

Example : 831700 C 2 . C L

| | | | | |
|--|-----------------------|--------------------------|---|----------------------------------|
| 1 Switch Type | 2 Contact Type | 3 Connection | 4 Actuators | 5 Actuator Position |
| 831700 831704 831709 | A B C | 1 5 2 6 3 7 4 8 | A B C D Ø E F L MB MB SP4967 | L - Left (Standard) R - Right |
| To order actuators separately, use the 8 digit P/N | | | Example P/N is 831700 SPDT solder terminals "C" actuator mounted on the left. | |

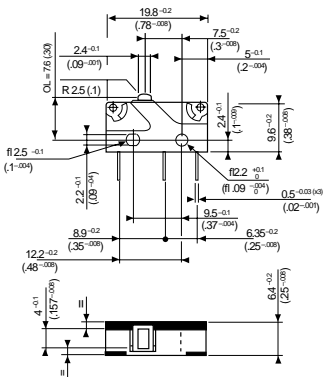
Products and specifications subject to change without notice.

Order/Technical Support – Tel: (800) 677-5311 / FAX: (800) 677-3865 / www.crouzet-usa.com

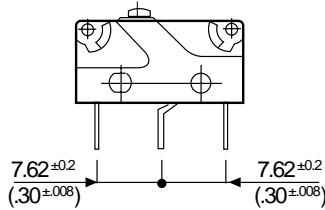
Subminiature Switches DIN 41635 B

Dimensions

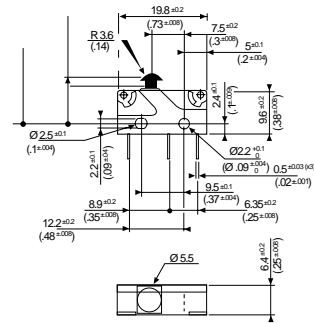
83 170 Asymmetric



83 170 Symmetric



83 170 with MB Button

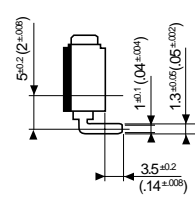
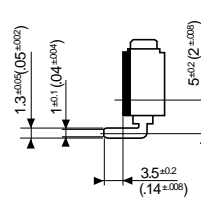
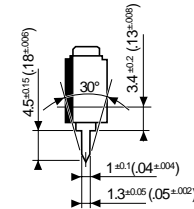
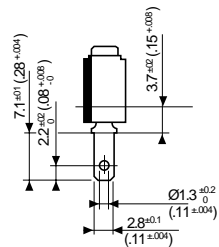
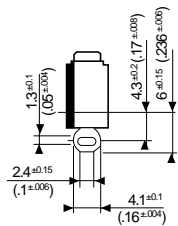


Mounting by M2 screws
Torque : 2 cm daN

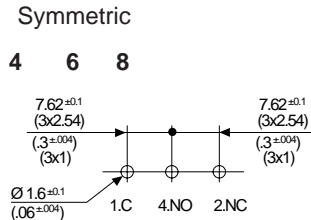
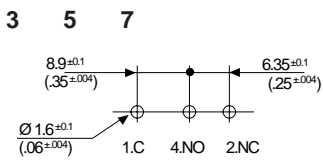
mm (in)

Connections

- 2
Solder
- 1
.11x.02 Quick Connects
- 3-4
Straight PCB
- 5-6
Side Output PCB Rear
- 7-8
Side Output PCB Front



Printed circuit board mounting



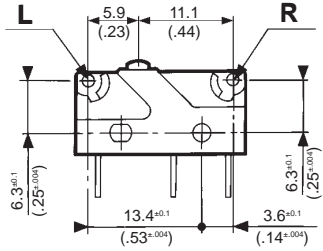
mm (in)

Products and specifications subject to change without notice.

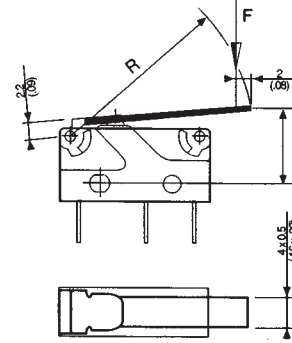
Order/Technical Support – Tel: (800) 677-5311 / FAX: (800) 677-3865 / www.crouzet-usa.com

Actuators

Actuator mounting positions

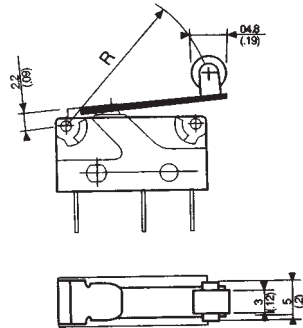


A B C

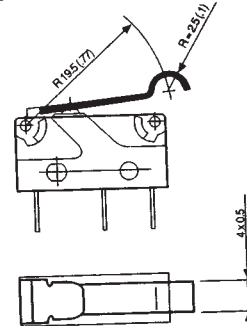


TP (Tripping Point)
Refer to pages 3/6 & 3/7.

E



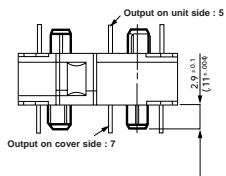
F



mm (in.)

Mounting accessories

Mounting pins



mm (in.)

Products and specifications subject to change without notice.

Order/Technical Support – Tel: (800) 677-5311 / FAX: (800) 677-3865 / www.crouzet-usa.com



Компания «ЭлектроПласт» предлагает заключение долгосрочных отношений при поставках импортных электронных компонентов на взаимовыгодных условиях!

Наши преимущества:

- Оперативные поставки широкого спектра электронных компонентов отечественного и импортного производства напрямую от производителей и с крупнейших мировых складов;
- Поставка более 17-ти миллионов наименований электронных компонентов;
- Поставка сложных, дефицитных, либо снятых с производства позиций;
- Оперативные сроки поставки под заказ (от 5 рабочих дней);
- Экспресс доставка в любую точку России;
- Техническая поддержка проекта, помощь в подборе аналогов, поставка прототипов;
- Система менеджмента качества сертифицирована по Международному стандарту ISO 9001;
- Лицензия ФСБ на осуществление работ с использованием сведений, составляющих государственную тайну;
- Поставка специализированных компонентов (Xilinx, Altera, Analog Devices, Intersil, Interpoint, Microsemi, Aeroflex, Peregrine, Syfer, Eurofarad, Texas Instrument, Miteq, Cobham, E2V, MA-COM, Hittite, Mini-Circuits, General Dynamics и др.);

Помимо этого, одним из направлений компании «ЭлектроПласт» является направление «Источники питания». Мы предлагаем Вам помощь Конструкторского отдела:

- Подбор оптимального решения, техническое обоснование при выборе компонента;
- Подбор аналогов;
- Консультации по применению компонента;
- Поставка образцов и прототипов;
- Техническая поддержка проекта;
- Защита от снятия компонента с производства.



Как с нами связаться

Телефон: 8 (812) 309 58 32 (многоканальный)

Факс: 8 (812) 320-02-42

Электронная почта: org@eplast1.ru

Адрес: 198099, г. Санкт-Петербург, ул. Калинина, дом 2, корпус 4, литера А.