

# Amphenol Connex

## Cable Assemblies



**Cable Assemblies**

**Amphenol Connex** offers a full line of pre-assembled, fixed-length cable assemblies. Fixed length assemblies are for use in a variety of commercial and industrial applications that require standard configurations or lengths. Cables are available with AMC, BNC, MMCX, MCX, SMA, SMB and other commercially available RF connector series. Connector styles include straight and right angle plugs, straight jacks, and bulkhead jacks in a variety of configurations. Cable types include miniature and standard flexible cables, and semi-rigid conformable (hand formable) cable. Additional options, not shown in this catalog, may be available. See the Amphenol Connex website for our latest offering.

### ***Benefits of using fixed length assemblies:***

- Lower cost than a custom solution
- Faster than a custom solution; many cables are available from distributor stock
- Guaranteed performance

*Don't see a configuration that works for you? Amphenol Connex also offers custom cable assemblies using standard RF cable and Amphenol Connex connectors. Common uses for custom cable assemblies include; non-standard lengths, special labeling, testing, or packaging requirements. Please contact us for additional information.*

## **Amphenol Connex**

5069 Maureen Lane, Unit B  
Moorpark, CA 93021 USA  
805.378.6464  
800.942.6639  
[www.amphenolconnex.com](http://www.amphenolconnex.com)



Copyright 2011 Amphenol Connex Corporation. All Rights Reserved.

The content of this brochure must not be used in any form or manner without prior approval in writing. The names, logos and text within this document are protected by intellectual property law, fair trading and other laws. We reserve the right to modify designs and/or specifications in order to improve quality, keep pace with technological advances, or to meet particular requirements in production. We periodically review content and check for inaccuracies. Nevertheless, the contents are solely for information and are not to be construed as an offer, a warranty, an implied warranty or a contractual commitment of any kind.

# HOW TO CREATE A PART NUMBER

## FIXED LENGTH CABLE ASSEMBLIES: Build your Cable Assembly in 4 easy steps.

**1** Select **series** from the list below:

Series	Code
BNC	115
TNC	125
SMA	135
SMB	145
N	175
MCX	255
MMCX	265
AMC	335

**2** Select **connector configuration**

Style	Code
Straight Plug to Straight Plug	101
Straight Plug to Right Angle Plug	103
Right Angle Plug to Right Angle Plug	104
Straight Plug to Straight Jack	106
Right Angle Plug to Straight Jack	107
Straight Jack to Straight Jack	108
Straight Plug to Bulkhead Jack	110
Right Angle Plug to Bulkhead Jack	111
Straight Jack to Bulkhead Jack	112

**3** Select **cable type**

Cable Type	Code
RG 316	01
RG 174	02
RG 316 Double Braid	03
RG 179	05
B8218	06
RG 142	07
RG 178	08
B1855A	09
LMR 400	10
RG 223	11
1.13mm	12
1.32mm	13
1.37mm	14
LMR 200	17
RG 179 DB	18
RG 58	19
RG 59	20
LMR 195	21
LMR 240	22
RG 400	25
B1694A	26
.085 Conformable	R1
.141 Conformable	R2
.250 Conformable	R3

**4** Define **Cable Length** (Replace XX.XX with length), for example 06.00 = 6 inches. Standard Lengths are 6, 24, 36, and 48 inches, with some exceptions.

### Part Number Example:



## AMC BETWEEN SERIES CABLE ASSEMBLIES

**Amphenol Connex AMC Between Series Cable Assemblies** utilize Amphenol Microcoaxial style connectors on miniature cable types. Due to their small size, AMC assemblies are perfect for applications where space is limited. AMC cable assemblies have a 50 ohm impedance; with a frequency range of DC up to 6 GHz. These assemblies feature a snap on interface and assembly length is dimensioned in millimeters. Standard lengths are 50, 100, 150, 200, 250, and 300 millimeters, custom lengths may also be available. Heat shrink representation may vary.

### AMC RIGHT ANGLE PLUG TO TNC BULKHEAD JACK CABLE ASSEMBLIES

Part Number	Cable Type	Connector 1	Connector 2	Impedance
336203-08-XXXX	RG-178/U	AMC	122547	50 Ohm
336203-12-XXXX	1.13 mm	AMC	122526	50 Ohm
336203-13-XXXX	1.32 mm	AMC	122529	50 Ohm
336203-14-XXXX	1.37 mm	AMC	122532	50 Ohm



### AMC RIGHT ANGLE PLUG TO TNC BULKHEAD JACK IP 67 CABLE ASSEMBLIES

Part Number	Cable Type	Connector 1	Connector 2	Impedance
336209-08-XXXX	RG-178/U	AMC	122370-11	50 Ohm
336209-12-XXXX	1.13 mm	AMC	122542	50 Ohm
336209-13-XXXX	1.32 mm	AMC	122529-10	50 Ohm
336209-14-XXXX	1.37 mm	AMC	122532-10	50 Ohm



# AMC BETWEEN SERIES CABLE ASSEMBLIES

## AMC RIGHT ANGLE PLUG TO TNC BULKHEAD JACK REVERSE POLARITY CABLE ASSEMBLIES

Part Number	Cable Type	Connector 1	Connector 2	Impedance
336206-08-XXXX	RG-178/U	AMC	122370RP	50 Ohm
336206-12-XXXX	1.13 mm	AMC	122526RP	50 Ohm
336206-13-XXXX	1.32 mm	AMC	122529RP	50 Ohm
336206-14-XXXX	1.37 mm	AMC	122532RP	50 Ohm



## AMC RIGHT ANGLE PLUG TO TNC BULKHEAD JACK REVERSE POLARITY IP 67 CABLE ASSEMBLIES

Part Number	Cable Type	Connector 1	Connector 2	Impedance
336212-08-XXXX	RG-178/U	AMC	122370RP-11	50 Ohm
336212-12-XXXX	1.13 mm	AMC	122542RP	50 Ohm
336212-13-XXXX	1.32 mm	AMC	122529RP-10	50 Ohm
336212-14-XXXX	1.37 mm	AMC	122532RP-10	50 Ohm



## AMC RIGHT ANGLE PLUG TO SMA BULKHEAD JACK CABLE ASSEMBLIES

Part Number	Cable Type	Connector 1	Connector 2	Impedance
336303-08-XXXX	RG-178/U	AMC	132220	50 Ohm
336303-12-XXXX	1.13 mm	AMC	132377	50 Ohm
336303-13-XXXX	1.32 mm	AMC	132389	50 Ohm
336303-14-XXXX	1.37 mm	AMC	132392	50 Ohm



Additional options are available. See the Amphenol Connex website for our latest offering.

# AMC BETWEEN SERIES CABLE ASSEMBLIES

## AMC RIGHT ANGLE PLUG TO SMA BULKHEAD JACK IP 67 CABLE ASSEMBLIES

Part Number	Cable Type	Connector 1	Connector 2	Impedance
336309-08-XXXX	RG-178/U	AMC	132286-12	50 Ohm
336309-12-XXXX	1.13 mm	AMC	132422	50 Ohm
336309-13-XXXX	1.32 mm	AMC	132389-10	50 Ohm
336309-14-XXXX	1.37 mm	AMC	132392-10	50 Ohm



## AMC RIGHT ANGLE PLUG TO SMA BULKHEAD JACK REVERSE POLARITY CABLE ASSEMBLIES

Part Number	Cable Type	Connector 1	Connector 2	Impedance
336306-08-XXXX	RG-178/U	AMC	132220RP	50 Ohm
336306-12-XXXX	1.13 mm	AMC	132377RP	50 Ohm
336306-13-XXXX	1.32 mm	AMC	132389RP	50 Ohm
336306-14-XXXX	1.37 mm	AMC	132392RP	50 Ohm



## AMC RIGHT ANGLE PLUG TO SMA BULKHEAD JACK REVERSE POLARITY IP 67 CABLE ASSEMBLIES

Part Number	Cable Type	Connector 1	Connector 2	Impedance
336312-08-XXXX	RG-178/U	AMC	132286RP-10	50 Ohm
336312-12-XXXX	1.13 mm	AMC	132397RP	50 Ohm
336312-13-XXXX	1.32 mm	AMC	132389-10RP	50 Ohm
336312-14-XXXX	1.37 mm	AMC	132392RP-10	50 Ohm





# AMC BETWEEN SERIES CABLE ASSEMBLIES

## AMC RIGHT ANGLE PLUG TO SMB BULKHEAD JACK CABLE ASSEMBLIES

Part Number	Cable Type	Connector 1	Connector 2	Impedance
336403-08-XXXX	RG-178/U	AMC	142231	50 Ohm
336403-12-XXXX	1.13 mm	AMC	142346	50 Ohm
336403-13-XXXX	1.32 mm	AMC	142349	50 Ohm
336403-14-XXXX	1.37 mm	AMC	142352	50 Ohm



## AMC RIGHT ANGLE PLUG TO SMB BULKHEAD JACK WITH O-RING CABLE ASSEMBLIES

Part Number	Cable Type	Connector 1	Connector 2	Impedance
336409-08-XXXX	RG-178/U	AMC	142231-10	50 Ohm
336409-12-XXXX	1.13 mm	AMC	142346-10	50 Ohm
336409-13-XXXX	1.32 mm	AMC	142349-10	50 Ohm
336409-14-XXXX	1.37 mm	AMC	142352-10	50 Ohm



## AMC RIGHT ANGLE PLUG TO SMB BULKHEAD JACK REVERSE POLARITY CABLE ASSEMBLIES

Part Number	Cable Type	Connector 1	Connector 2	Impedance
336406-08-XXXX	RG-178/U	AMC	142231RP	50 Ohm
336406-12-XXXX	1.13 mm	AMC	142346RP	50 Ohm
336406-13-XXXX	1.32 mm	AMC	142349RP	50 Ohm
336406-14-XXXX	1.37 mm	AMC	142352RP	50 Ohm



Additional options are available. See the Amphenol Connex website for our latest offering.

# AMC BETWEEN SERIES CABLE ASSEMBLIES

## AMC RIGHT ANGLE PLUG TO SMB BULKHEAD JACK REVERSE POLARITY WITH O-RING CABLE ASSEMBLIES

Part Number	Cable Type	Connector 1	Connector 2	Impedance
336412-08-XXXX	RG-178/U	AMC	142231RP-10	50 Ohm
336412-12-XXXX	1.13 mm	AMC	142346RP-10	50 Ohm
336412-13-XXXX	1.32 mm	AMC	142349RP-10	50 Ohm
336412-14-XXXX	1.37 mm	AMC	142352RP-10	50 Ohm



## AMC RIGHT ANGLE PLUG TO MCX BULKHEAD JACK CABLE ASSEMBLIES

Part Number	Cable Type	Connector 1	Connector 2	Impedance
336503-08-XXXX	RG-178/U	AMC	252167	50 Ohm
336503-12-XXXX	1.13 mm	AMC	252197	50 Ohm
336503-13-XXXX	1.32 mm	AMC	252200	50 Ohm
336503-14-XXXX	1.37 mm	AMC	252203	50 Ohm



## AMC RIGHT ANGLE PLUG TO MCX BULKHEAD JACK WITH O-RING CABLE ASSEMBLIES

Part Number	Cable Type	Connector 1	Connector 2	Impedance
336509-08-XXXX	RG-178/U	AMC	252167-10	50 Ohm
336509-12-XXXX	1.13 mm	AMC	252197-10	50 Ohm
336509-13-XXXX	1.32 mm	AMC	252200-10	50 Ohm
336509-14-XXXX	1.37 mm	AMC	252203-10	50 Ohm





# AMC BETWEEN SERIES CABLE ASSEMBLIES

## AMC RIGHT ANGLE PLUG TO MCX BULKHEAD JACK REVERSE POLARITY CABLE ASSEMBLIES

Part Number	Cable Type	Connector 1	Connector 2	Impedance
336506-08-XXXX	RG-178/U	AMC	252167RP	50 Ohm
336506-12-XXXX	1.13 mm	AMC	252197RP	50 Ohm
336506-13-XXXX	1.32 mm	AMC	252200RP	50 Ohm
336506-14-XXXX	1.37 mm	AMC	252203RP	50 Ohm



## AMC RIGHT ANGLE PLUG TO MCX BULKHEAD JACK REVERSE POLARITY WITH O-RING CABLE ASSEMBLIES

Part Number	Cable Type	Connector 1	Connector 2	Impedance
336512-08-XXXX	RG-178/U	AMC	252167RP-10	50 Ohm
336512-12-XXXX	1.13 mm	AMC	252197RP-10	50 Ohm
336512-13-XXXX	1.32 mm	AMC	252200RP-10	50 Ohm
336512-14-XXXX	1.37 mm	AMC	252203RP-10	50 Ohm



## AMC RIGHT ANGLE PLUG TO MMCX BULKHEAD JACK CABLE ASSEMBLIES

Part Number	Cable Type	Connector 1	Connector 2	Impedance
336603-08-XXXX	RG-178/U	AMC	262120	50 Ohm
336603-12-XXXX	1.13 mm	AMC	262141	50 Ohm
336603-13-XXXX	1.32 mm	AMC	262145	50 Ohm
336603-14-XXXX	1.37 mm	AMC	262148	50 Ohm



# AMC BETWEEN SERIES CABLE ASSEMBLIES

## AMC RIGHT ANGLE PLUG TO MMCX BULKHEAD JACK WITH O-RING CABLE ASSEMBLIES

Part Number	Cable Type	Connector 1	Connector 2	Impedance
336609-08-XXXX	RG-178/U	AMC	262120-10	50 Ohm
336609-12-XXXX	1.13 mm	AMC	262141-10	50 Ohm
336609-13-XXXX	1.32 mm	AMC	262145-10	50 Ohm
336609-14-XXXX	1.37 mm	AMC	262148-10	50 Ohm



## AMC RIGHT ANGLE PLUG TO MMCX BULKHEAD JACK REVERSE POLARITY CABLE ASSEMBLIES

Part Number	Cable Type	Connector 1	Connector 2	Impedance
336606-08-XXXX	RG-178/U	AMC	262120RP	50 Ohm
336606-12-XXXX	1.13 mm	AMC	262141RP	50 Ohm
336606-13-XXXX	1.32 mm	AMC	262145RP	50 Ohm
336606-14-XXXX	1.37 mm	AMC	262148RP	50 Ohm



## AMC RIGHT ANGLE PLUG TO MMCX BULKHEAD JACK REVERSE POLARITY WITH O-RING CABLE ASSEMBLIES

Part Number	Cable Type	Connector 1	Connector 2	Impedance
336612-08-XXXX	RG-178/U	AMC	262120RP-10	50 Ohm
336612-12-XXXX	1.13 mm	AMC	262141RP-10	50 Ohm
336612-13-XXXX	1.32 mm	AMC	262145RP-10	50 Ohm
336612-14-XXXX	1.37 mm	AMC	262148RP-10	50 Ohm



## MMCX SERIES CABLE ASSEMBLIES

**Amphenol Connex MMCX Cable Assemblies** are made with MMCX connectors on both ends. These MMCX assemblies offer a reliable broadband performance from DC to 6 GHz. These 50 Ohm assemblies incorporate the industry approved MMCX interface with a snap-on/quick disconnect interface. These assemblies are often used in high volume cellular, GPS, and wireless base station applications. The MMCX cable assemblies are dimensioned in inches with standard lengths of 6, 12, 18, 24, 36, and 48 inches, and custom lengths may also be available. Heat shrink representation may vary.

### MMCX STRAIGHT PLUG TO MMCX STRAIGHT PLUG CABLE ASSEMBLIES

Part Number	Cable Type	Connector 1	Connector 2	Impedance
265101-01-XX.XX	RG-316/U	262101	262101	50 Ohm
265101-02-XX.XX	RG-174/U	262101	262101	50 Ohm
265101-03-XX.XX	RG-316/U DB	262110	262110	50 Ohm



### MMCX STRAIGHT PLUG TO MMCX RIGHT ANGLE PLUG CABLE ASSEMBLIES

Part Number	Cable Type	Connector 1	Connector 2	Impedance
265103-01-XX.XX	RG-316/U	262103	262101	50 Ohm
265103-02-XX.XX	RG-174/U	262103	262101	50 Ohm
265103-03-XX.XX	RG-316/U DB	262111	262110	50 Ohm



# MMCX CABLE ASSEMBLIES

## MMCX RIGHT ANGLE PLUG TO MMCX RIGHT ANGLE PLUG CABLE ASSEMBLIES

Part Number	Cable Type	Connector 1	Connector 2	Impedance
265104-01-XX.XX	RG-316/U	262103	262103	50 Ohm
265104-02-XX.XX	RG-174/U	262103	262103	50 Ohm
265104-03-XX.XX	RG-316/U DB	262111	262111	50 Ohm



## MMCX STRAIGHT PLUG TO MMCX BULKHEAD JACK CABLE ASSEMBLIES

Part Number	Cable Type	Connector 1	Connector 2	Impedance
265110-01-XX.XX	RG-316/U	262101	262121	50 Ohm
265110-02-XX.XX	RG-174/U	262101	262121	50 Ohm
265110-03-XX.XX	RG-316/U DB	262110	262122	50 Ohm



## MMCX RIGHT ANGLE PLUG TO MMCX BULKHEAD JACK CABLE ASSEMBLIES

Part Number	Cable Type	Connector 1	Connector 2	Impedance
265111-01-XX.XX	RG-316/U	262103	262121	50 Ohm
265111-02-XX.XX	RG-174/U	262103	262121	50 Ohm
265111-03-XX.XX	RG-316/U DB	262111	262122	50 Ohm



## MCX CABLE ASSEMBLIES

**Amphenol Connex MCX Cable Assemblies** are made with MCX connectors on both ends. These MCX assemblies are ideal for applications in the cellular telephone, information systems and communications markets. These assemblies operate in a frequency range of up to 6 GHz and offer a push-on/pull-off mating interface. MCX assemblies are available in both 50 Ohm and 75 Ohm impedance. These cable assemblies are dimensioned in inches with standard lengths of 6, 12, 18, 24, 36, and 48 inches, and custom lengths may also be available. Heat shrink representation may vary.

### MCX STRAIGHT PLUG TO MCX STRAIGHT PLUG CABLE ASSEMBLIES

Part Number	Cable Type	Connector 1	Connector 2	Impedance
255101-01-XX.XX	RG-316/U	252103	252103	50 Ohm
255101-02-XX.XX	RG-174/U	252103	252103	50 Ohm
255101-03-XX.XX	RG-316/U DB	252121	252121	50 Ohm



### MCX STRAIGHT PLUG TO MCX RIGHT ANGLE PLUG CABLE ASSEMBLIES

Part Number	Cable Type	Connector 1	Connector 2	Impedance
255103-01-XX.XX	RG-316/U	252102	252103	50 Ohm
255103-02-XX.XX	RG-174/U	252102	252103	50 Ohm
255103-03-XX.XX	RG-316/U DB	252121	252119	50 Ohm



# MCX CABLE ASSEMBLIES

## MCX RIGHT ANGLE PLUG TO MCX RIGHT ANGLE PLUG CABLE ASSEMBLIES

Part Number	Cable Type	Connector 1	Connector 2	Impedance
255104-01-XX.XX	RG-316/U	252102	252102	50 Ohm
255104-02-XX.XX	RG-174/U	252102	252102	50 Ohm
255104-03-XX.XX	RG-316/U DB	252119	252119	50 Ohm



## MCX STRAIGHT PLUG TO MCX BULKHEAD JACK CABLE ASSEMBLIES

Part Number	Cable Type	Connector 1	Connector 2	Impedance
255110-01-XX.XX	RG-316/U	252145	252103	50 Ohm
255110-02-XX.XX	RG-174/U	252145	252103	50 Ohm
255110-03-XX.XX	RG-316/U DB	252147	252121	50 Ohm



## MCX RIGHT ANGLE PLUG TO MCX BULKHEAD JACK CABLE ASSEMBLIES

Part Number	Cable Type	Connector 1	Connector 2	Impedance
255111-01-XX.XX	RG-316/U	252145	252102	50 Ohm
255111-02-XX.XX	RG-174/U	252145	252102	50 Ohm
255111-03-XX.XX	RG-316/U DB	252147	252121	50 Ohm



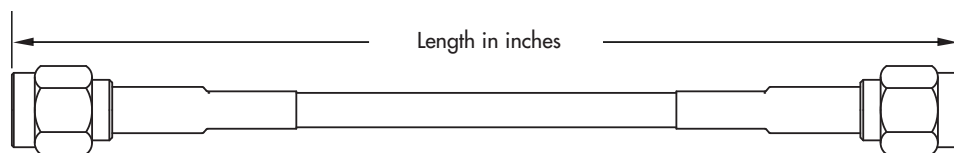
## SMA CABLE ASSEMBLIES

**Amphenol Connex SMA Cable Assemblies** are made with SMA connectors on both ends. SMA connectors are semi-precision, sub-miniature, high-frequency connectors that offer reliable broadband performance. Amphenol Connex offers SMA assemblies using both flexible and semi-rigid (hand conformable) cable types. SMA assemblies on Semi-Rigid cable are DC to 18 GHz and assemblies using flexible cable perform up to 12.4 GHz, (this varies by cable type), with both cable types offering low reflection and constant 50 Ohm impedance. SMA connectors feature a thread-on interface that offers high mechanical strength, high durability and low VSWR. These cable assemblies are dimensioned in inches with standard lengths of 6, 12, 18, 24, 36, and 48 inches, and custom lengths may also be available. Heat shrink representation may vary. Conformable/semi rigid assemblies have no heat shrink tubing.

### Amphenol Connex SMA Cable Assemblies on Flexible Cable

#### SMA STRAIGHT PLUG TO SMA STRAIGHT PLUG CABLE ASSEMBLIES

Part Number	Cable Type	Connector 1	Connector 2	Impedance
135101-01-XX.XX	RG-316/U	132114	132114	50 Ohm
135101-02-XX.XX	RG-174/U	132114	132114	50 Ohm
135101-03-XX.XX	RG-316/U DB	132178	132178	50 Ohm
135101-04-XX.XX	RG-58/U	132113	132113	50 Ohm
135101-07-XX.XX	RG-142/U	132195	132195	50 Ohm



#### SMA STRAIGHT PLUG TO SMA RIGHT ANGLE PLUG CABLE ASSEMBLIES

Part Number	Cable Type	Connector 1	Connector 2	Impedance
135103-01-XX.XX	RG-316/U	132123	132114	50 Ohm
135103-02-XX.XX	RG-174/U	132123	132114	50 Ohm
135103-03-XX.XX	RG-316/U DB	132182	132178	50 Ohm
135103-04-XX.XX	RG-58/U	132122	132113	50 Ohm
135103-07-XX.XX	RG-142/U	132194	132195	50 Ohm





# SMA CABLE ASSEMBLIES

## SMA RIGHT ANGLE PLUG TO SMA RIGHT ANGLE PLUG CABLE ASSEMBLIES

Part Number	Cable Type	Connector 1	Connector 2	Impedance
135104-01-XX.XX	RG-316/U	132123	132123	50 Ohm
135104-02-XX.XX	RG-174/U	132123	132123	50 Ohm
135104-03-XX.XX	RG-316/U DB	132182	132182	50 Ohm
135104-04-XX.XX	RG-58/U	132122	132122	50 Ohm
135104-07-XX.XX	RG-142/U	132194	132194	50 Ohm



## SMA STRAIGHT PLUG TO SMA BULKHEAD JACK CABLE ASSEMBLIES

Part Number	Cable Type	Connector 1	Connector 2	Impedance
135110-01-XX.XX	RG-316/U	132119	132114	50 Ohm
135110-02-XX.XX	RG-174/U	132119	132114	50 Ohm
135110-03-XX.XX	RG-316/U DB	132176	132178	50 Ohm
135110-04-XX.XX	RG-58/U	132118	132113	50 Ohm
135110-07-XX.XX	RG-142/U	132191	132195	50 Ohm



## SMA RIGHT ANGLE PLUG TO SMA BULKHEAD JACK CABLE ASSEMBLIES

Part Number	Cable Type	Connector 1	Connector 2	Impedance
135111-01-XX.XX	RG-316/U	132119	132123	50 Ohm
135111-02-XX.XX	RG-174/U	132119	132123	50 Ohm
135111-03-XX.XX	RG-316/U DB	132176	132182	50 Ohm
135111-04-XX.XX	RG-58/U	132118	132122	50 Ohm
135111-07-XX.XX	RG-142/U	132191	132194	50 Ohm



# SMA CABLE ASSEMBLIES ON CONFORMABLE SEMI-RIGID CABLE

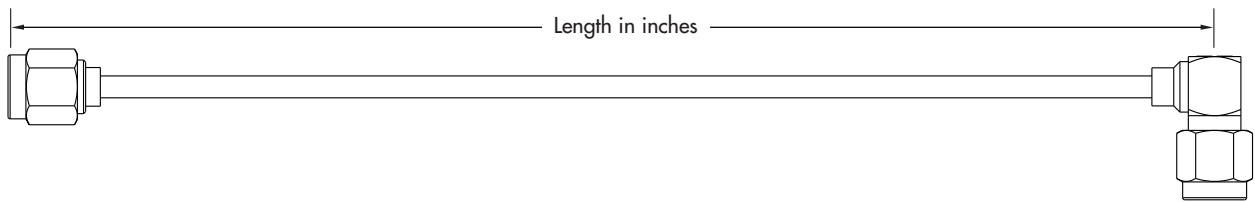
## SMA STRAIGHT PLUG TO SMA STRAIGHT PLUG CABLE ASSEMBLIES

Part Number	Cable Type	Connector 1	Connector 2	Impedance
135101-R1-XX.XX	.085 Conformable	132101	132101	50 Ohm
135101-R2-XX.XX	.141 Conformable	132102	132102	50 Ohm



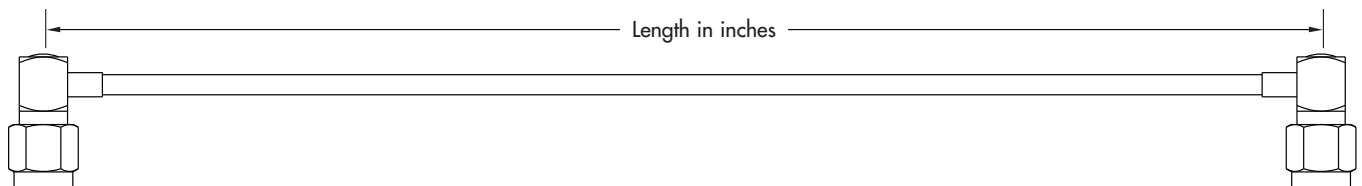
## SMA STRAIGHT PLUG TO SMA RIGHT ANGLE PLUG CABLE ASSEMBLIES

Part Number	Cable Type	Connector 1	Connector 2	Impedance
135103-R1-XX.XX	.085 Conformable	132101	132111	50 Ohm
135103-R2-XX.XX	.141 Conformable	132102	132112	50 Ohm



## SMA RIGHT ANGLE PLUG TO SMA RIGHT ANGLE PLUG CABLE ASSEMBLIES

Part Number	Cable Type	Connector 1	Connector 2	Impedance
135104-R1-XX.XX	.085 Conformable	132111	132111	50 Ohm
135104-R2-XX.XX	.141 Conformable	132112	132112	50 Ohm



# SMA CABLE ASSEMBLIES ON CONFORMABLE SEMI-RIGID CABLE

## SMA STRAIGHT PLUG TO SMA BULKHEAD JACK CABLE ASSEMBLIES

Part Number	Cable Type	Connector 1	Connector 2	Impedance
135110-R1-XX.XX	.085 Conformable	132105-10	132101	50 Ohm
135110-R2-XX.XX	.141 Conformable	132106	132102	50 Ohm



## SMA RIGHT ANGLE PLUG TO SMA BULKHEAD JACK CABLE ASSEMBLIES

Part Number	Cable Type	Connector 1	Connector 2	Impedance
135111-R1-XX.XX	.085 Conformable	132103	132111	50 Ohm
135111-R2-XX.XX	.141 Conformable	132106	132112	50 Ohm

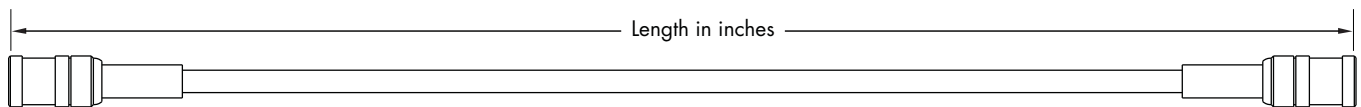


## SMB CABLE ASSEMBLIES

**Amphenol Connex SMB Cable Assemblies** offer SMB connectors on both ends. SMB assemblies perform from DC to 4 GHz and are available in both 50 Ohm and 75 Ohm impedance. SMB connectors offer a push-on interface for ease of use. All 75 Ohm SMB connectors used on these cable assemblies are the Mini 75 Ohm SMB type. SMB assemblies are offered in a variety of configurations and are dimensioned in inches with standard lengths of 6, 12, 18, 24, 36, and 48 inches. Custom lengths may also be available. Heat shrink representation may vary.

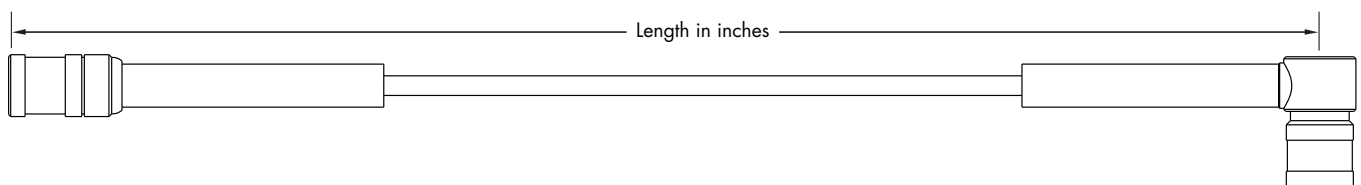
### SMB STRAIGHT PLUG TO SMB STRAIGHT PLUG CABLE ASSEMBLIES

Part Number	Cable Type	Connector 1	Connector 2	Impedance
145101-01-XX.XX	RG-316/U	142186	142186	50 Ohm
145101-05-XX.XX	RG-179/U	142186-75	142186-75	75 Ohm



### SMB STRAIGHT PLUG TO SMB RIGHT ANGLE PLUG CABLE ASSEMBLIES

Part Number	Cable Type	Connector 1	Connector 2	Impedance
145103-01-XX.XX	RG-316/U	142194	142186	50 Ohm
145103-08-XX.XX	RG-178/U	142195	142229	50 Ohm



# SMB CABLE ASSEMBLIES

## SMB RIGHT ANGLE PLUG TO SMB RIGHT ANGLE PLUG CABLE ASSEMBLIES

Part Number	Cable Type	Connector 1	Connector 2	Impedance
145104-01-XX.XX	RG-316/U	142194	142194	50 Ohm
145104-05-XX.XX	RG-179/U	142194-75	142194-75	75 Ohm
145104-08-XX.XX	RG-178/U	142195	142195	50 Ohm



## SMB STRAIGHT PLUG TO SMB BULKHEAD JACK CABLE ASSEMBLIES

Part Number	Cable Type	Connector 1	Connector 2	Impedance
145110-01-XX.XX	RG-316/U	142191	142186	50 Ohm
145110-05-XX.XX	RG-179/U	142191-75	142186-75	75 Ohm
145110-08-XX.XX	RG-178/U	142231	142229	50 Ohm



## SMB RIGHT ANGLE PLUG TO SMB BULKHEAD JACK CABLE ASSEMBLIES

Part Number	Cable Type	Connector 1	Connector 2	Impedance
145111-01-XX.XX	RG-316/U	142191	142194	50 Ohm
145111-05-XX.XX	RG-179/U	142191-75	142194-75	75 Ohm
145111-08-XX.XX	RG-178/U	142231	142195	50 Ohm

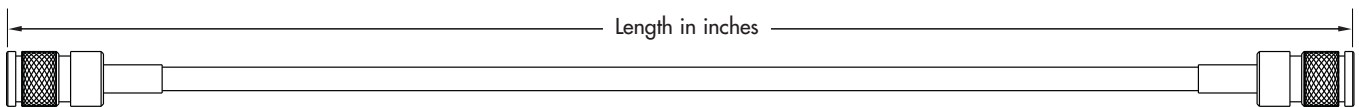


## 1.0/2.3 CABLE ASSEMBLIES

**Amphenol Connex 1.0/2.3 Cable Assemblies** were designed for use in instrumentation and 75 Ohm video applications. The 1.0/2.3 connectors feature an innovative push-pull locking mechanism. The slim coupling nut is ideal for high density applications. These cable assemblies are for applications up to 3 GHz+ and standard lengths are 6, 12, 18, 24, 36, and 48 inches; custom lengths may also be available. Heat shrink representation may vary.

### 1.0/2.3 STRAIGHT PLUG TO 1.0/2.3 STRAIGHT PLUG CABLE ASSEMBLIES

Part Number	Cable Type	Connector 1	Connector 2	Impedance
285101-06-XX.XX	B8218	282138-75	282138-75	75 Ohm
285101-09-XX.XX	B1855A	282138-75	282138-75	75 Ohm
285101-26-XX.XX	B1694A	282137-75	282137-75	75 Ohm



## BNC CABLE ASSEMBLIES

**Amphenol Connex BNC Cable Assemblies** have BNC connectors on both ends. The bayonet coupling style allows for quick connect and disconnect while still offering high reliability. Assemblies are offered for both 50 and 75 ohm impedance applications. The 50 ohm assemblies will function up to 4 GHz, and the 75 ohm assemblies will function up to 3 GHz. These cable assemblies are often used in broadcast applications with standard lengths from 6 inches all the way up to 100 feet. Heat shrink representation may vary.

### BNC STRAIGHT PLUG TO BNC STRAIGHT PLUG CABLE ASSEMBLIES

Part Number	Cable Type	Connector 1	Connector 2	Impedance
115101-01-XX.XX	RG-316/U	112132	112132	50 Ohm
115101-05-XX.XX	RG-179/U	112133	112133	75 Ohm
115101-06-XX.XX	B8218	112955	112955	75 Ohm
115101-09-XX.XX	B1855A	112955	112955	75 Ohm
115101-19-XX.XX	RG-58/U	112116	112116	50 Ohm
115101-20-XX.XX	RG-59/U	112119	112119	75 Ohm



### BNC STRAIGHT PLUG TO BNC RIGHT ANGLE PLUG CABLE ASSEMBLIES

Part Number	Cable Type	Connector 1	Connector 2	Impedance
115103-04-XX.XX	RG-58/U	112116	112162	50 Ohm
115103-15-XX.XX	RG-59/U	112119	112165	75 Ohm





# BNC CABLE ASSEMBLIES

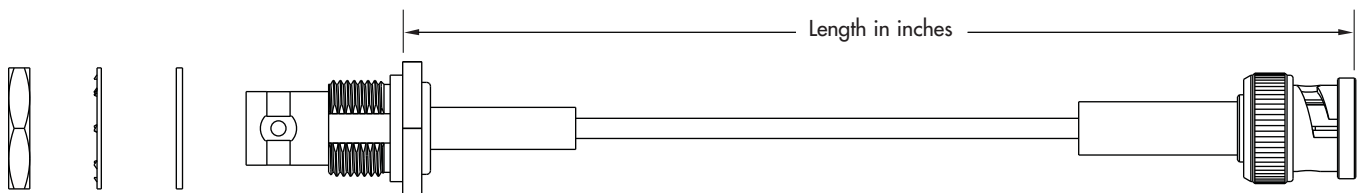
## BNC RIGHT ANGLE PLUG TO BNC RIGHT ANGLE PLUG CABLE ASSEMBLIES

Part Number	Cable Type	Connector 1	Connector 2	Impedance
115104-01-XX.XX	RG-316/U	112178	112178	50 Ohm
115104-04-XX.XX	RG-58/U	112162	112162	50 Ohm



## BNC STRAIGHT PLUG TO BNC BULKHEAD JACK CABLE ASSEMBLIES

Part Number	Cable Type	Connector 1	Connector 2	Impedance
115110-01-XX.XX	RG-316/U	112234	112132	50 Ohm
115110-04-XX.XX	RG-58/U	112202	112116	50 Ohm



## BNC RIGHT ANGLE PLUG TO BNC BULKHEAD JACK CABLE ASSEMBLIES

Part Number	Cable Type	Connector 1	Connector 2	Impedance
115111-01-XX.XX	RG-316/U	112234	112178	50 Ohm
115110-04-XX.XX	RG-58/U	112202	112162	50 Ohm



# TNC CABLE ASSEMBLIES

**Amphenol Connex TNC Cable Assemblies** utilize TNC connectors on both ends. TNC connectors are the same physical size as BNC connectors, but feature a threaded coupling mechanism. The 50 Ohm assemblies function up to 11 GHz while the 75 Ohm assemblies function up to 3 GHz. These assemblies are often used in commercial and military antenna applications. Standard lengths are 6, 12, 18, 24, 36, and 48 inches, and custom lengths may also be available. Heat shrink representation may vary.

## TNC STRAIGHT PLUG TO TNC STRAIGHT PLUG CABLE ASSEMBLIES

Part Number	Cable Type	Connector 1	Connector 2	Impedance
125101-01-XX.XX	RG-316/U	122116	122116	50 Ohm
125101-04-XX.XX	RG-58/U	122108	122108	50 Ohm



## TNC STRAIGHT PLUG TO TNC RIGHT ANGLE PLUG CABLE ASSEMBLIES

Part Number	Cable Type	Connector 1	Connector 2	Impedance
125103-01-XX.XX	RG-316/U	122116	122148	50 Ohm
125103-04-XX.XX	RG-58/U	122108	122140	50 Ohm



# TNC CABLE ASSEMBLIES

## TNC RIGHT ANGLE PLUG TO TNC RIGHT ANGLE PLUG CABLE ASSEMBLIES

Part Number	Cable Type	Connector 1	Connector 2	Impedance
125104-01-XX.XX	RG-316/U	122148	122148	50 Ohm
125104-04-XX.XX	RG-58/U	122140	122140	50 Ohm



## TNC STRAIGHT PLUG TO TNC BULKHEAD JACK CABLE ASSEMBLIES

Part Number	Cable Type	Connector 1	Connector 2	Impedance
125110-01-XX.XX	RG-316/U	122192	122116	50 Ohm
125110-04-XX.XX	RG-58/U	122160	122108	50 Ohm



## TNC RIGHT ANGLE PLUG TO TNC BULKHEAD JACK CABLE ASSEMBLIES

Part Number	Cable Type	Connector 1	Connector 2	Impedance
125111-01-XX.XX	RG-316/U	122192	122148	50 Ohm
125111-04-XX.XX	RG-58/U	122160	122140	50 Ohm

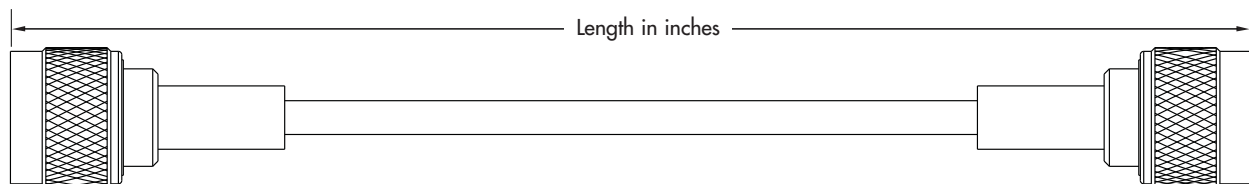


## N CABLE ASSEMBLIES

**Amphenol Connex N Cable Assemblies** feature N connectors on both ends. Amphenol Connex N connectors feature Nexcote® (White Bronze) plating to reduce unwanted passive intermodulation distortion. N connectors are medium sized connectors with a rugged threaded coupling mechanism, ideal for high performance telecommunications applications. Assemblies typically perform well up to 11 GHz (varies by cable) and offer 50 Ohm impedance. Standard lengths are 6, 12, 18, 24, 36, and 48 inches, and custom lengths may also be available. Heat shrink representation may vary.

### N STRAIGHT PLUG TO N STRAIGHT PLUG CABLE ASSEMBLIES

Part Number	Cable Type	Connector 1	Connector 2	Impedance
175101-07-XX.XX	RG-142/U	172142	172142	50 Ohm
175101-10-XX.XX	LMR 400	172102H243	172102H243	50 Ohm
175101-17-XX.XX	LMR 200	172214	172214	50 Ohm



### N STRAIGHT PLUG TO N RIGHT ANGLE PLUG CABLE ASSEMBLIES

Part Number	Cable Type	Connector 1	Connector 2	Impedance
175103-07-XX.XX	RG-142/U	172142	172178	50 Ohm
175103-10-XX.XX	LMR 400	172102H243	172176	50 Ohm



# N CABLE ASSEMBLIES

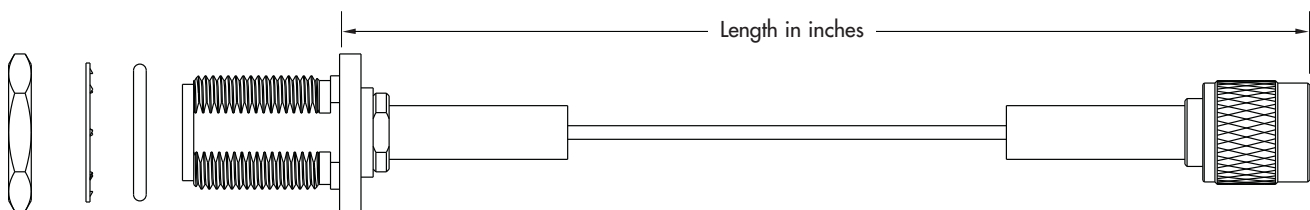
## N RIGHT ANGLE PLUG TO N RIGHT ANGLE PLUG CABLE ASSEMBLIES

Part Number	Cable Type	Connector 1	Connector 2	Impedance
175104-07-XX.XX	RG-142/U	172178	172178	50 Ohm
175104-10-XX.XX	LMR 400	172176	172176	50 Ohm



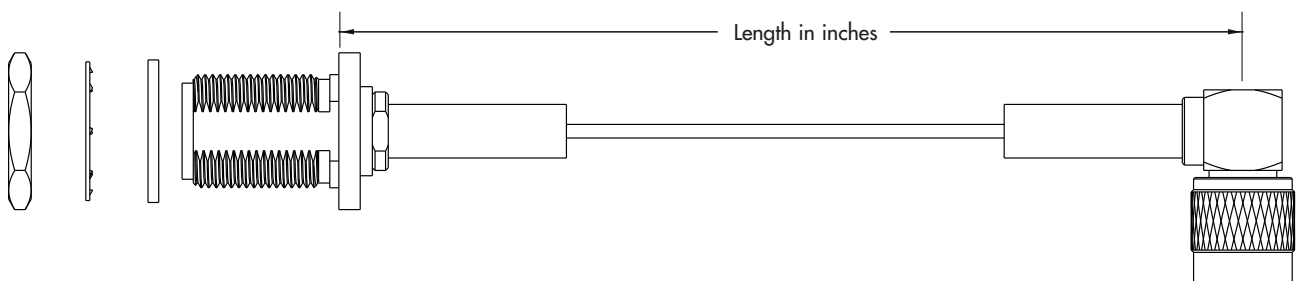
## N STRAIGHT PLUG TO N BULKHEAD JACK CABLE ASSEMBLIES

Part Number	Cable Type	Connector 1	Connector 2	Impedance
175110-07-XX.XX	RG-142/U	172132	172142	50 Ohm
175110-10-XX.XX	LMR 400	172220	172102H243	50 Ohm



## N RIGHT ANGLE PLUG TO N BULKHEAD JACK CABLE ASSEMBLIES

Part Number	Cable Type	Connector 1	Connector 2	Impedance
175111-07-XX.XX	RG-142/U	172132	172178	50 Ohm
175111-10-XX.XX	LMR 400	172220	172176	50 Ohm



## BETWEEN SERIES CABLE ASSEMBLIES

**Amphenol Connex Between Series Cable Assemblies** have different series connectors on each end. Combinations of different series along with different connector styles are offered in a variety of impedances that function at a variety of different frequencies. Each assembly is limited by the lower performing end. Standard lengths are 6, 12, 18, 24, 36, and 48 inches, and custom lengths may also be available. Heat shrink representation may vary.

### BNC STRAIGHT PLUG TO SMA STRAIGHT PLUG CABLE ASSEMBLIES

Part Number	Cable Type	Connector 1	Connector 2	Impedance
245101-01-XX.XX	RG-316/U	132114	112132	50 Ohm
245101-04-XX.XX	RG-58/U	132113	112116	50 Ohm
245101-07-XX.XX	RG-142/U	132195	112514	50 Ohm



### BNC STRAIGHT PLUG TO SMB RIGHT ANGLE PLUG CABLE ASSEMBLIES

Part Number	Cable Type	Connector 1	Connector 2	Impedance
245103-02-XX.XX	RG-174/U	112132	142194	50 Ohm
245103-05-XX.XX	RG-179/U	112133	142194-75	75 Ohm



### MMCX RIGHT ANGLE PLUG TO SMA BULKHEAD JACK CABLE ASSEMBLIES

Part Number	Cable Type	Connector 1	Connector 2	Impedance
245106-02-XX.XX	RG-174/U	132119	262103	50 Ohm



## BETWEEN SERIES CABLE ASSEMBLIES

### MMCX RIGHT ANGLE PLUG TO SMA BULKHEAD JACK REVERSE POLARITY CABLE ASSEMBLIES

Part Number	Cable Type	Connector 1	Connector 2	Impedance
245102-08-XX.XX	RG-178/U	132220RP	262102	50 Ohm



### MMCX RIGHT ANGLE PLUG TO SMA RIGHT ANGLE BULKHEAD JACK CABLE ASSEMBLIES

Part Number	Cable Type	Connector 1	Connector 2	Impedance
245108-01-XX.XX	RG-316/U	132245	262103	50 Ohm
245108-02-XX.XX	RG-174/U	132245	262103	50 Ohm



### MMCX STRAIGHT PLUG TO SMA BULKHEAD JACK CABLE ASSEMBLIES

Part Number	Cable Type	Connector 1	Connector 2	Impedance
245107-02-XX.XX	RG-174/U	132119	262101	50 Ohm



### MMCX STRAIGHT PLUG TO SMA RIGHT ANGLE BULKHEAD JACK CABLE ASSEMBLIES

Part Number	Cable Type	Connector 1	Connector 2	Impedance
245105-02-XX.XX	RG-174/U	132245	262101	50 Ohm





## BETWEEN SERIES CABLE ASSEMBLIES

**Amphenol Connex True 75-OHM Between Series Cable Assemblies** have different series connectors on each end. Combinations of different series along with different connector styles all offer true 75-Ohm impedance. Standard lengths are 6, 12, 18, 24, 36, and 48 inches, and custom lengths may also be available. Heat shrink representation may vary.

### 1.0/2.3 STRAIGHT PLUG TO BNC STRAIGHT PLUG TRUE 75 OHM CABLE ASSEMBLIES

Part Number	Cable Type	Connector 1	Connector 2	Impedance
245903-09-XX.XX	B1855A	282138-75	112955	75 Ohm



### 1.0/2.3 STRAIGHT PLUG TO BNC STRAIGHT JACK ON BELDEN 1855A TRUE 75 OHM CABLE ASSEMBLIES

Part Number	Cable Type	Connector 1	Connector 2	Impedance
245904-09-XX.XX	B1855A	282138-75	112989	75 Ohm



*Don't see a configuration that works for you? Amphenol Connex also offers custom cable assemblies using standard RF cable and Amphenol Connex connectors. Common uses for custom cable assemblies include; non-standard lengths, special labeling, testing, or packaging requirements. Please contact us for additional information.*

805.378.6464 800.942.6639  
[www.amphenolconnex.com](http://www.amphenolconnex.com)

---

NOTES:



**Amphenol Connex**  
5069 Maureen Lane, Unit B  
Moorpark, CA 93021 USA

**805.378.6464**  
**800.942.6639**  
**[www.amphenolconnex.com](http://www.amphenolconnex.com)**



Компания «ЭлектроПласт» предлагает заключение долгосрочных отношений при поставках импортных электронных компонентов на взаимовыгодных условиях!

Наши преимущества:

- Оперативные поставки широкого спектра электронных компонентов отечественного и импортного производства напрямую от производителей и с крупнейших мировых складов;
- Поставка более 17-ти миллионов наименований электронных компонентов;
- Поставка сложных, дефицитных, либо снятых с производства позиций;
- Оперативные сроки поставки под заказ (от 5 рабочих дней);
- Экспресс доставка в любую точку России;
- Техническая поддержка проекта, помощь в подборе аналогов, поставка прототипов;
- Система менеджмента качества сертифицирована по Международному стандарту ISO 9001;
- Лицензия ФСБ на осуществление работ с использованием сведений, составляющих государственную тайну;
- Поставка специализированных компонентов (Xilinx, Altera, Analog Devices, Intersil, Interpoint, Microsemi, Aeroflex, Peregrine, Syfer, Eurofarad, Texas Instrument, Miteq, Cobham, E2V, MA-COM, Hittite, Mini-Circuits, General Dynamics и др.);

Помимо этого, одним из направлений компании «ЭлектроПласт» является направление «Источники питания». Мы предлагаем Вам помощь Конструкторского отдела:

- Подбор оптимального решения, техническое обоснование при выборе компонента;
- Подбор аналогов;
- Консультации по применению компонента;
- Поставка образцов и прототипов;
- Техническая поддержка проекта;
- Защита от снятия компонента с производства.



#### Как с нами связаться

**Телефон:** 8 (812) 309 58 32 (многоканальный)

**Факс:** 8 (812) 320-02-42

**Электронная почта:** [org@eplast1.ru](mailto:org@eplast1.ru)

**Адрес:** 198099, г. Санкт-Петербург, ул. Калинина, дом 2, корпус 4, литера А.