



---

# ***bq26500 Single Cell Battery Fuel Gauge Evaluation Module***

## *User's Guide*

## EVM IMPORTANT NOTICE (CATEGORY B)

IMPORTANT: TI is providing the enclosed **HPA033** evaluation module under the following conditions:

This evaluation module (EVM) being provided by Texas Instruments (TI) is intended for use for **ENGINEERING DEVELOPMENT OR EVALUATION PURPOSES ONLY** and is not considered by Texas Instruments to be fit for commercial use. As such, this EVM may not be complete in terms of design and/or manufacturing related protective considerations including product safety measures typically found in the end-product incorporating the module. As a prototype, this product does not fall within the scope of the European Union Directive on electromagnetic compatibility and on low voltage and therefore may not meet the technical requirements of the directive. This EVM is not subject to the EU marking requirements.

- Should this EVM not meet the specifications indicated in the User's Guide the EVM may be returned within 30 days from the date of delivery for a full refund. **THE FOREGOING WARRANTY IS THE EXCLUSIVE WARRANTY MADE BY TI AND IS IN LIEU OF ALL OTHER WARRANTIES, EXPRESSED, IMPLIED, OR STATUTORY, INCLUDING ANY WARRANTY OF MERCHANTABILITY OR FITNESS FOR ANY PARTICULAR PURPOSE.**
- The user assumes all responsibility and liability for proper and safe handling of the EVM. The user acknowledge that the use of the EVM could present serious hazards and that it is the user's responsibility to take all precautions for the handling and use of the EVMs in accordance with good laboratory practices. Please be aware that the products received may not be regulatory compliant or agency certified (FCC, UL, etc.). Due to the open construction of the product, it is the user's responsibility to take any and all appropriate precautions with regard to electrostatic discharge.
- **NEITHER PARTY WILL BE LIABLE TO THE OTHER FOR ANY INDIRECT, SPECIAL, INCIDENTAL, OR CONSEQUENTIAL DAMAGES.**
- TI is currently dealing with various customers for products, and therefore our arrangement with the user **will not be exclusive.**
- TI assumes **no liability for applications assistance, customer product design, software performance, or infringement of patents or services described herein.**
- Please read the User's Guide and specifically the section in the User's Guide pertaining to warnings and restrictions prior to handling the product. This section contains important information regarding high temperature and voltages which TI recommends to be read before handling the EVMs. In case of any doubt regarding safety, please contact the TI application engineer.
- Persons handling the product should have electronics training and observe good laboratory practice standards.
- No license is granted under any patent right or other intellectual property right of TI covering or relating to any combination, machine, or process in which such TI products or services might be or are used.
- This Agreement is subject to the laws of the State of Texas, excluding the body of conflicts of laws and the United Nations Convention on the International Sale of Goods, and will be subject to the exclusive jurisdiction of the courts of the State of Texas.

### **DYNAMIC WARNINGS AND RESTRICTIONS**

It is important to operate this EVM within the maximum input voltage ranges specified in Table 4.

Exceeding the specified input range may cause unexpected operation and/or irreversible damage to the EVM. If there are questions concerning the input range, please contact a TI field representative prior to connecting the input power.

Applying loads outside of the specified output range may result in unintended operation and/or possible permanent damage to the EVM. Please consult the EVM User's Guide prior to connecting any load to the EVM output. If there is uncertainty as to the load specification, please contact a TI field representative.

During normal operation, some circuit components may have case temperatures greater than 50°C. The EVM is designed to operate properly with certain components above 50°C as long as the input and output ranges are maintained. These components include but are not limited to linear regulators, switching transistors, pass transistors, and current sense resistors. These types of devices can be identified using the EVM schematic located in the EVM User's Guide. When placing measurement probes near these devices during operation, please be aware that these devices may be very warm to the touch.

Mailing Address:

Texas Instruments  
Post Office Box 655303  
Dallas, Texas 75265

Copyright © 2003, Texas Instruments Incorporated

# ***bq26500 Single Cell Battery Fuel Gauge Evaluation Module***

*Portable Power Products*

## **ABSTRACT**

The bq26500EVM is a complete evaluation system for the bq26500 single cell Li-Ion and Li-Polymer battery gas gauge device. The EVM includes one bq26500 circuit module, an EV2300 PC interface board for gas gauge evaluation, a USB cable, CD ROM including windows-based PC software and support documentation.

## **Contents**

<b>1</b>	<b>Introduction</b>	<b>6</b>
1.1	Features	6
1.2	Kit Contents	6
1.3	Ordering Information	6
<b>2</b>	<b>bq26500EVM Based Circuit Module</b>	<b>7</b>
2.1	Test Points	7
<b>3</b>	<b>bq26500EVM Circuit Module Schematic</b>	<b>7</b>
3.1	Schematic	7
<b>4</b>	<b>Circuit Module Physical Layouts</b>	<b>9</b>
4.1	Board Layout	9
<b>5</b>	<b>bq26500EVM Circuit Module List of Materials</b>	<b>9</b>
<b>6</b>	<b>bq26500EVM Circuit Module Performance Specification Summary</b>	<b>10</b>
<b>7</b>	<b>EVM Hardware and Software Setup</b>	<b>11</b>
7.1	Software Installation	11
7.2	Hardware Connection	12
7.2.1	Connecting the bq26500EVM circuit module to a battery pack	12
7.2.2	PC interface connection	12
<b>8</b>	<b>Operation</b>	<b>13</b>
8.1	Starting the Program	13
8.2	Initialization	14
8.2.1	Loading the sense resistor value	14
8.2.2	Programming the bq26500 EEPROM	13
8.2.3	Resetting the bq26500	15
8.3	Configuring the Register Screen	14
8.4	The Pro Screen	15
8.5	Data Logging	16

## List of Figures

<b>Figure 1. bq26500EVM Schematic .....</b>	<b>8</b>
<b>Figure 2. bq26500EVM Circuit Module Layout .....</b>	<b>9</b>
<b>Figure 3. bq26500EVM Circuit Module Connection to Cells and System Load/Charger .....</b>	<b>12</b>
<b>Figure 4. Initial Register Screen .....</b>	<b>13</b>
<b>Figure 5. EEPROM Screen .....</b>	<b>14</b>
<b>Figure 6. Pro Screen .....</b>	<b>15</b>

## List of Tables

<b>Table 1. Ordering Information .....</b>	<b>6</b>
<b>Table 2. Test Points .....</b>	<b>7</b>
<b>Table 3. List of Materials .....</b>	<b>11</b>
<b>Table 4. Performance Specification Summary .....</b>	<b>11</b>
<b>Table 5. Circuit Module-to-PC Interface Board Connection .....</b>	<b>12</b>
<b>Table 6. Example Data Logging .....</b>	<b>16</b>

# 1 Introduction

The bq26500EVM is a complete evaluation system for the bq26500 single cell Li-Ion and Li-Polymer battery gas gauge device. The EVM includes one bq26500 circuit module, an EV2300 PC interface board for gas gauge evaluation, a USB cable, CD ROM including windows-based PC software and support documentation. The circuit module includes one bq26500, a current sense resistor and all other components on-board necessary to calculate remaining battery capacity and predict at rate time to empty. The circuit module connects directly across the cell in a battery. With the PC interface board and software, the user can read the bq26500 data registers, program the on-chip configuration EEPROM, and evaluate the functions of the bq26500 under different charge and discharge conditions.

## 1.1 Features

- Complete evaluation system for the bq26500 battery gas gauge
- Populated circuit module for quick setup
- PC software and interface board for easy evaluation
- Software allows EEPROM programming and data logging for system analysis

## 1.2 Kit Contents

1. bq26500 circuit module with sense resistor
2. PC interface board (EV2300 for USB interface)
3. CD ROM including windows-based PC software and support documentation
4. USB cable
5. Set of support documentation

## 1.3 Ordering Information

**Table 1. Ordering Information**

EVM PART NUMBER	PC INTERFACE BOARD	CHEMISTRY	PACK VOLTAGE	CAPACITY
bq26500EVM-001	USB	Li-Ion	2.6 V to 4.5 V	100 to 2000 mah

## 2 bq26500EVM Based Circuit Module

The bq26500EVM based circuit module is an example circuit for battery fuel gauging of a single cell Li-Ion/Li-Polymer battery pack. There are two separate circuits on the EVM module. One is the active bq26500 fuel gauging circuitry; the other is the logic and power control to program the on-chip configuration EEPROM of the bq26500. In a typical application, only the active fuel gauging circuitry is required. The EEPROM programming circuitry would be required in a test setup to configure the bq26500 for the application by programming the EEPROM.

Contacts on the circuit module provide direct connection to the cell (J1–1, J2–2), the serial communications port (J1–3). The system load and charger connect across J1–1 and J2–1.

### 2.1 Test Points

**Table 2. Test Points**

TEST POINT	SIGNAL NAME	DESCRIPTION
J1–1	PACK+	Cell positive/pack positive
J1–2	GPIO	GPIO pin of the bq26500
J1–3	HDQ	Serial communications port
J2–1	PACK–	Pack negative
J2–2	BAT–	Cell negative
J3–1	21V	High voltage for EEPROM programming
J3–2	PROG	Input for timing of EEPROM programming pulse
J3–3	VSS	Programming ground
J4	1–2 jumper position for programming EEPROM 2–3 jumper position for normal bq26500 operation (fuel gauging)	

## 3 bq26500EVM Circuit Module Schematic

The schematic shows the circuit for the bq26500EVM implementation.

### 3.1 Schematic

Figure 1 shows the bq26500EVM circuit module schematic diagram.

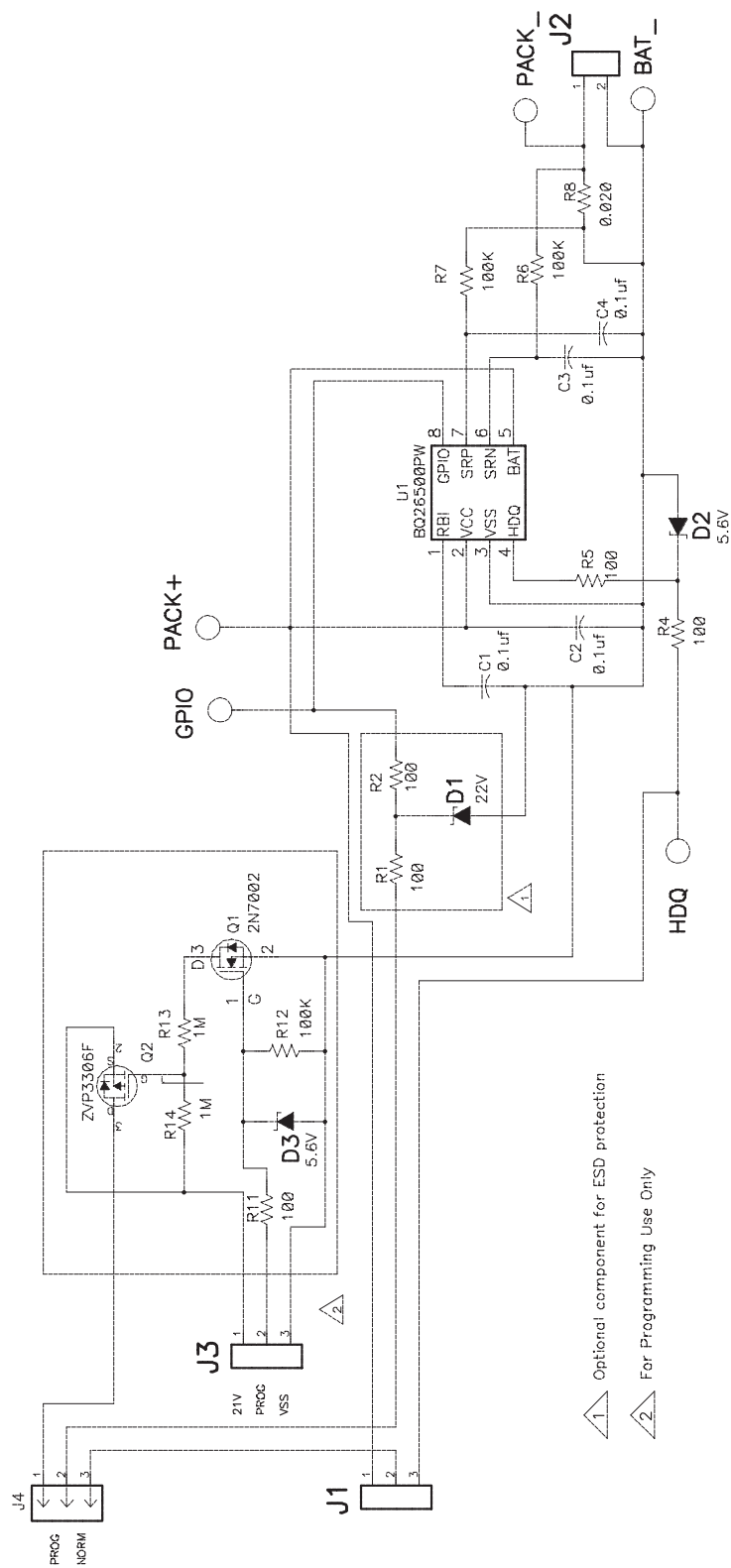


Figure 1. bq26500EVM Schematic



## 4 Circuit Module Physical Layouts

This chapter contains the board layout and assembly drawings for the bq26500EVM circuit module.

### 4.1 Board Layout

Figure 2, 3, 4 and 5 shows the PCB layers and assembly drawing for the bq26500EVM circuit module.

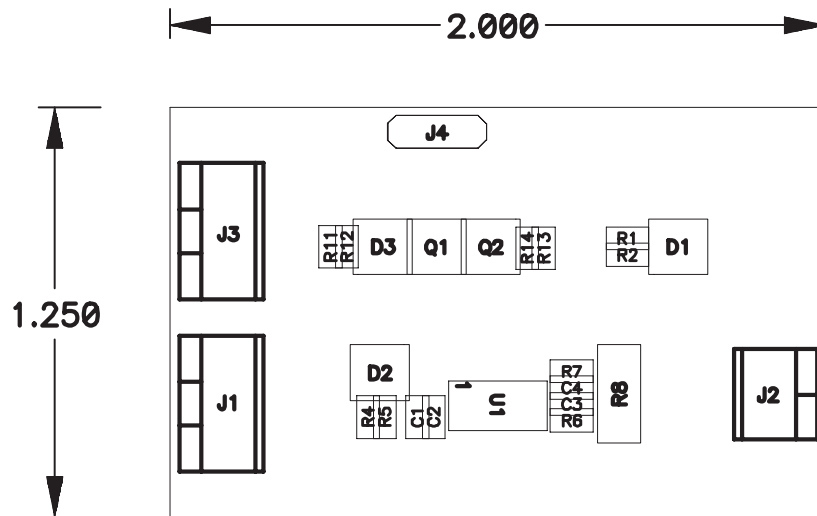


Figure 2. bq26500EVM Topside Assembly

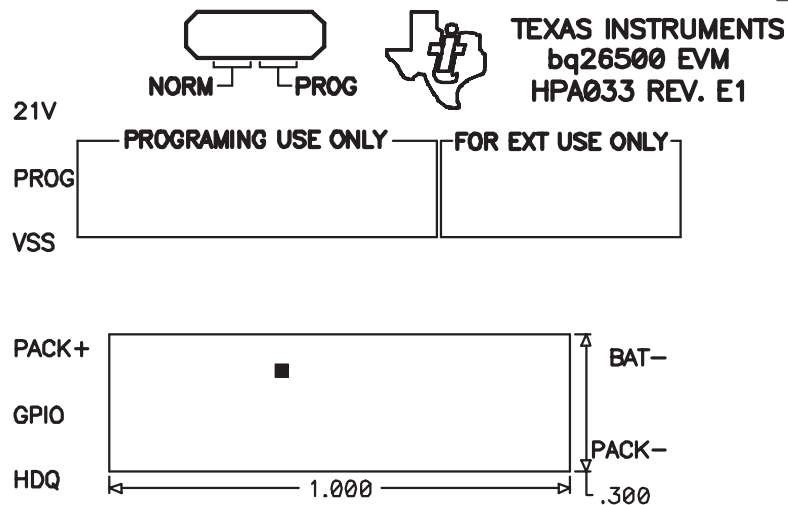


Figure 3. bq26500EVM Silkscreen

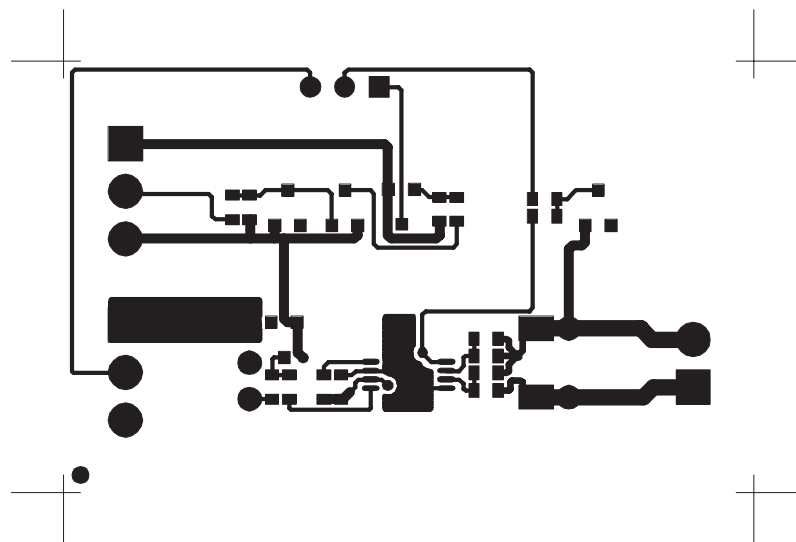


Figure 4. bq26500EVM Layer 1 Layout

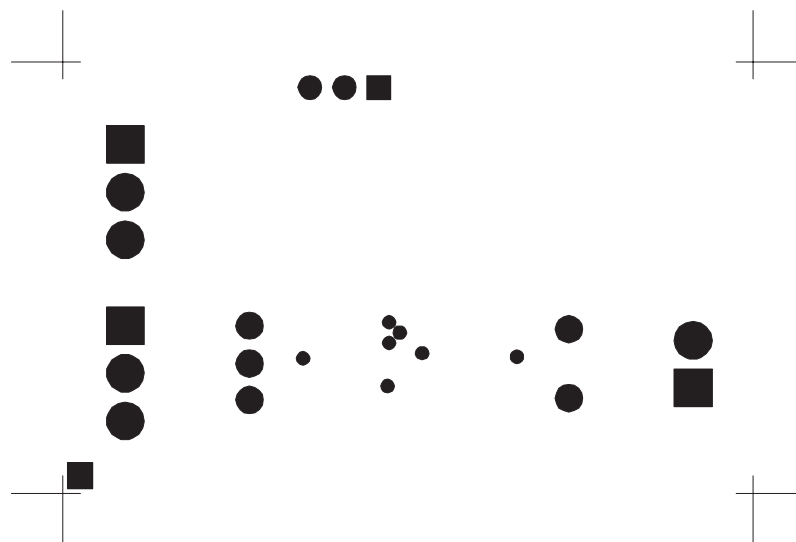


Figure 5. bq26500EVM Layer 2 Layout

## 5 bq26500EVM Circuit Module List of Materials

List of materials required for the bq26500EVM circuit module.

**Table 3. List of Materials**

REFDES	QTY	DESCRIPTION	MFR	PART NUMBER
C1, C2, C3, C4	4	Capacitor, ceramic, 0.1 $\mu$ F, 16 V, X7R, 603	muRata	GRM39X7R104K16
D1	1	Diode, Zener, 22 V, 350 mW, SOT23	Diodes, Inc.	BZX84C22
D2, D3	2	Diode, Zener, 5.6 V, 350 mW, SOT23	Diodes, Inc.	BZX84C5V6T
Q1	1	MOSFET, N-channel, 2N7002, 60 V, 115 mA, 1.2 $\Omega$ , SOT23	Vishay–Liteon	2N7002DICT
Q2	1	MOSFET, P-channel, ZVP3306F, –60 V, 0.09 A, 14 $\Omega$ , SOT23	Zetex	ZVP3306F
R1, R2, R4, R5, R11	5	Resistor, chip, 100 $\Omega$ , 1/16 W, 5%, 603	Std	Std
R13, R14	2	Resistor, Chip, 1 M, 1/16 W, 5%, 603	Std	Std
R6, R7, R12	3	Resistor, Chip, 100 k $\Omega$ , 1/16 W, 5%, 603	Std	Std
R8	1	Resistor, Chip, 0.020 $\Omega$ , 1/2 W, 2%, 2010	Dale	WSL2010–R020
U1	1	Single cell Li-Ion/Polymer gas gauge device, TSSOP–08	Texas Instruments	bq26500PW
J1, J3	2	Terminal blocks, 3 position	OST	ED1515
J2	1	Terminal blocks, 2 position	OST	ED1514
J4	1	Header, 3-pin, 100-mil spacing, (36-pin strip)	Sullins	PTC36SAAN
N/A	1	Shunt	Any	HPA033
N/A	1	PCB	Any	HPA033

## 6 bq26500EVM Circuit Module Performance Specification Summary

This section summarizes the performance specifications of the bq26500EVM circuit module. Table 4 gives the performance specifications of the circuit.

**Table 4. Performance Specification Summary**

SPECIFICATION	MIN	TYP	MAX	UNITS
Input Voltage PACK+/BAT–	2.6		4.5	V
Charge and Discharge Current			3	A

NOTES: 1. Charge and discharge max. is limited by the PCB design and power dissipation of the 20-m $\Omega$  1/2-W sense resistor included in the kit.

## 7 EVM Hardware and Software Setup

This section describes how to install the bq26500EVM PC software and how to connect the different components of the EVM.

### 7.1 Software Installation

The following steps install the bq26500 evaluation software:

1. Insert CD ROM into a CD ROM drive.
2. Select the CD ROM drive using **My Computer** or **File Manager**.
3. Select the ReadMeFirst.txt file.
4. Follow the instructions to install USB drivers for EV2300.
5. After installing the USB drivers for EV2300, double-click on the Setup.exe icon.
6. The setup program installs a windows application group.

## 7.2 Hardware Connection

There are three hardware components to the bq26500EVM:

- The bq26500EVM circuit module,
- The PC interface board,
- And the PC.

### 7.2.1 Connecting the bq26500EVM circuit module to a battery pack

Figure 6. shows how to connect the bq26500EVM circuit module to a Li-Ion cell and the system load/charger.

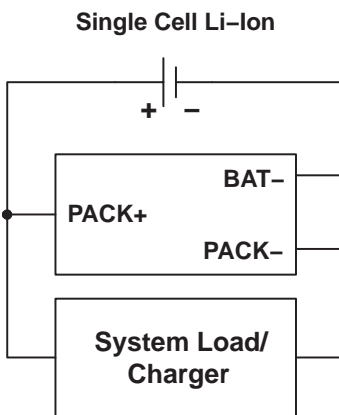


Figure 6. bq26500EVM Circuit Module Connection to Cells and System Load/Charger

### 7.2.2 PC Interface Connection

The following steps configure the hardware for interface to the PC:

1. Connect colored wires that are included with EV2300 to BQ26500EVM using Table 5 as a guide.
2. Connect the connector with colored wires to the HDQ connector that is on EV2300. HDQ connection is located on the top right of EV2300.
3. Connect the PC USB cable to the EV2300 and the PC USB port.

The bq26500EVM is now set up for operation.

Table 5. Circuit Module-to-EV2300 Connection

BQ26500EVM	COLOR
HDQ	BROWN
PACK-	BLACK
PROG	WHITE
PACK+(1)	RED

NOTES: (1) This connection is not useful when using a system load, charger or a power source (battery or external power supply).

## 8 Operation

This section details the operation of the bq26500EVM software.

### 8.1 Starting the Program

Run the program from the **Start|Programs|Texas Instruments|bq26500 Battery Monitor** menu sequence. The software defaults to PC USB port for communication. If the EV2300 is connected to USB port, the program should load and display the initial data screen.

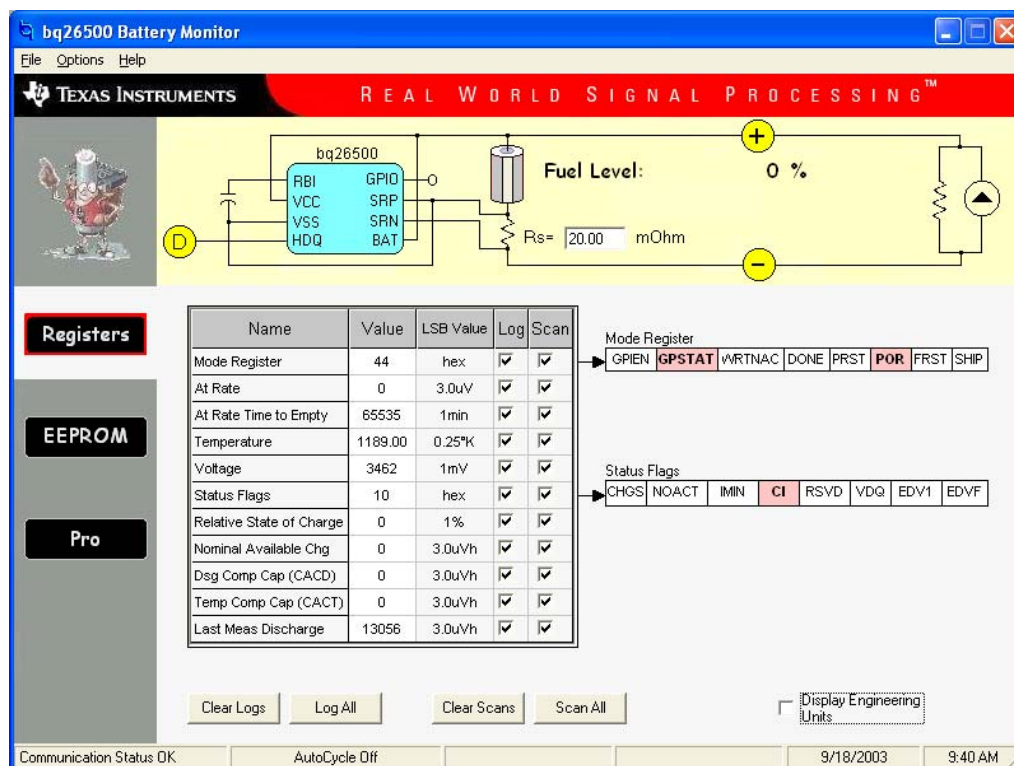


Figure 7. Initial Register Screen

If the EV2300 is not connected to a USB port, the program will display a USB error message and then display the initial data screen with no data in the register locations.

The com port can be changed by selecting the port under the options menu.

## 8.2 Initialization

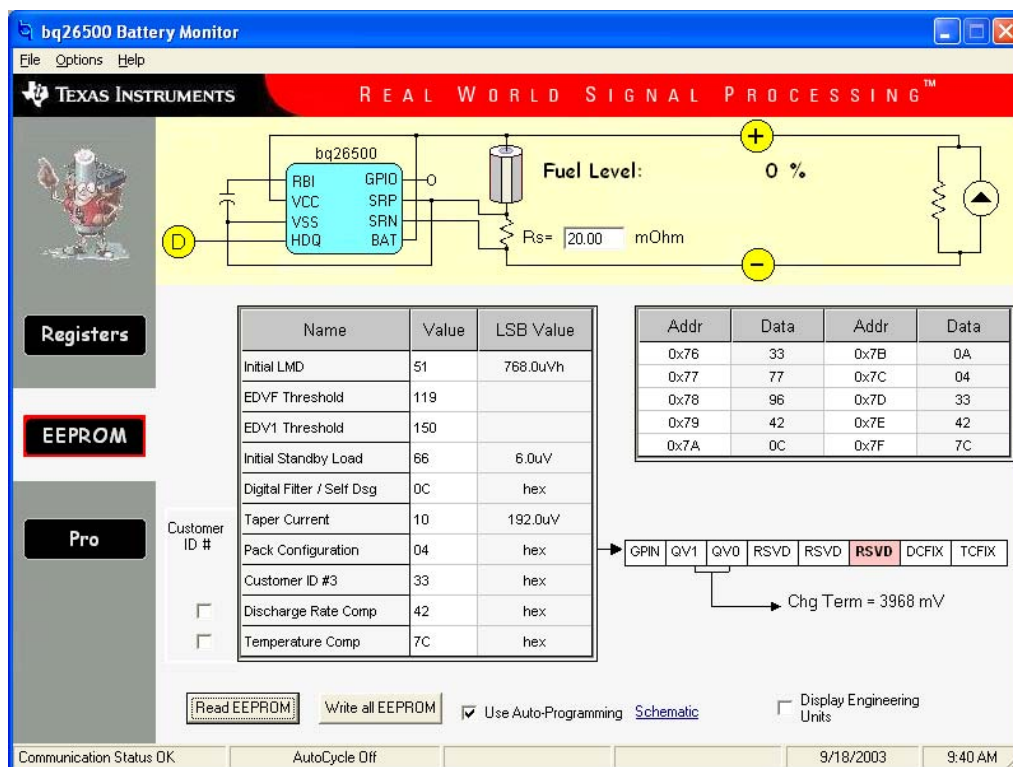
This section describes the settings that must be made before the bq26500 is evaluated.

### 8.2.1 Loading the sense resistor value

The bq26500EVM comes with a 20-m $\Omega$  sense resistor on the circuit board. Make sure the sense resistor value is entered in the  $R_S$  box at the top of the initial register screen. This value is used by the PC program to convert the bq26500 data set to engineering units. Checking the display engineering units box displays the data set in engineering units. No check mark displays the data set just as the bq26500 calculates them, ie, in units of 3.0-uVh counts.

### 8.2.2 Programming the bq26500 EEPROM

Each bq26500 is programmed at the factory with default values in the EEPROM. The values in EEPROM should be changed to match specific applications. The EEPROM values can be read by using the EEPROM screen.



**Figure 8. EEPROM Screen**

The values in the EEPROM can be easily changed using the EVM's auto programming feature. To use the auto program feature:

1. Make sure VOUT of the EV2300 is connected to PROG of the EVM
2. Connect a 21-V supply across 21 V (J3-1) and VSS (J3-3)
3. Click on the **use auto-programming** box to enable auto EEPROM programming

To change the EEPROM values simply click on the value to be changed, enter the new value, and press enter.

The EEPROM values can be stored in a file on the PC by using the File|Save Gas Gauge Flash Constants command from the pull down menu. Similarly, a saved file can be load by using the File|Open Gas Gauge Flash Constants command. Once the file is called up, the Write all EEPROM button can be used to write all the EEPROM values at once.

**NOTE:** Changing EEPROM data affects critical aspects of the bq26500 operation. Please review the bq26500 data sheet to determine how to develop new data for the EEPROM based on your application. It is recommend to first save the default EEPROM data as a file first before changing the data. In this way, the default data programming can easily be restored.

The bq26500 automatically uses the new EEPROM in its calculations once programmed.

### 8.2.3 Resetting the bq26500

The bq26500 can be reset at anytime by using the Options|Special Options|Reset bq26500 from the pulldown menu. When reset, the bq26500 loads the configuration values from EEPROM and set the remaining capacity registers to zero.

## 8.3 Configuring the Register Screen

The register screen has options for setting which data set values are to be scanned by the program. Scanning can be turned on or off using the Options|Scan pull down command. The items to be scanned are set by clicking on the corresponding Scan box in each row of data. A check mark in the box indicates that that data item will be scanned and updated on the PC display.

## 8.4 The Pro Screen

The pro screens allows the data location in the bq26500 to be addressed individually by entering the address to be read or the address and data to be written.

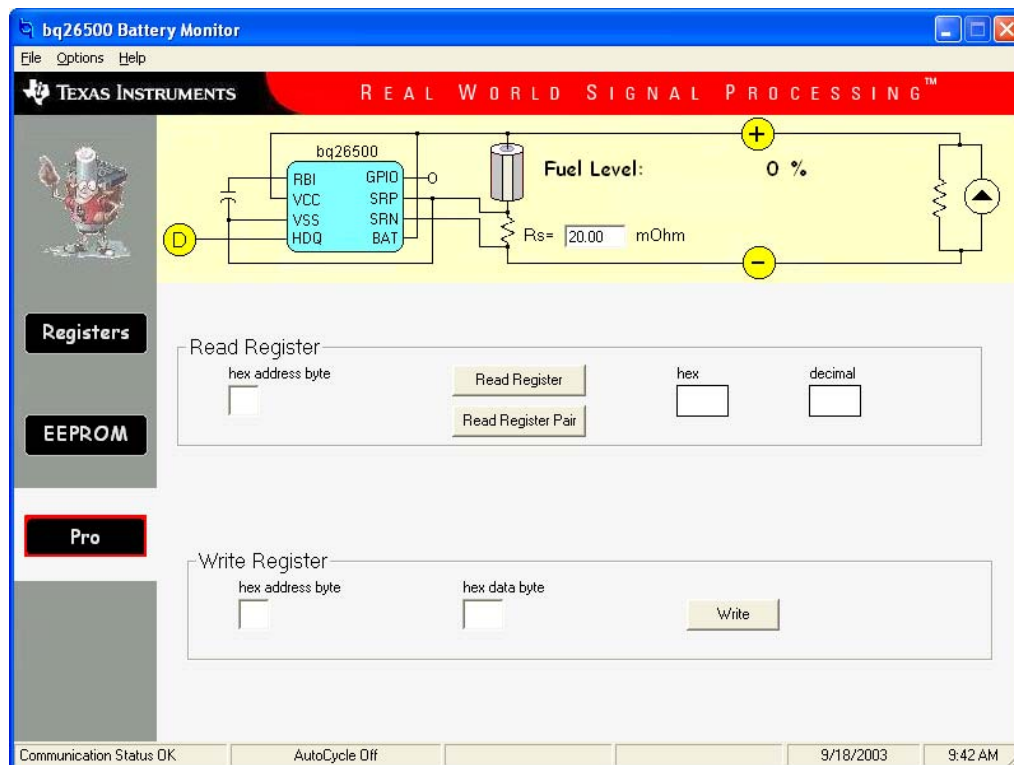


Figure 9. Pro Screen

## 8.5 Data Logging

The bq26500 registers can be logged by using the data log function. To log the data and create a log file:

1. Select the registers to log by clicking on the corresponding **Log** box in each row of data.
2. **File|Start Data Log** from the pull-down menu.
3. Enter the name of the data log file in the **Name Datalog File** box
4. Click on the **Open** button
5. To stop the data logging select **File|Close Data Log** from the pull-down menu

The file can be imported into a text editor, spreadsheet, or word processor program.

**Table 6. Example Data Log**

SAMPLE	STAMP	ELAPSED (s)	VOLTAGE	NAC	TEMP COMP
1	3:31:30	10	3829	1084.58	1084.58
2	3:31:40	20	3829	1086.26	1086.26
3	3:31:50	30	3832	1087.48	1087.48
4	3:32:00	40	3800	1087.48	1087.48
5	3:32:10	50	3786	1087.48	1087.48
6	3:32:20	60	3786	1087.48	1087.48
7	3:32:30	70	3630	1087.78	1087.78
8	3:32:40	80	3622	1084.12	1064.91
9	3:32:50	90	3614	1081.68	1062.47
10	3:33:00	100	3609	1078.02	1060.03
11	3:33:10	110	3603	1075.74	1033.34
12	3:33:20	120	3754	1075.74	1033.34
13	3:33:30	130	3762	1075.74	1033.34
14	3:33:40	140	3765	1075.74	1033.34
15	3:33:50	150	3767	1075.74	1033.34
16	3:34:00	160	3622	1073.91	1032.73
17	3:34:10	170	3609	1072.69	1032.73
18	3:34:20	180	3598	1070.25	1032.73
19	3:34:30	190	3593	1065.52	1032.73
20	3:34:40	200	3695	1065.52	1032.73
21	3:34:50	210	3810	1065.52	1032.73
22	3:35:00	220	3810	1065.52	1032.73
23	3:35:10	230	3813	1065.52	1032.73
24	3:35:20	240	3767	1065.52	1032.73



## IMPORTANT NOTICE

Texas Instruments Incorporated and its subsidiaries (TI) reserve the right to make corrections, modifications, enhancements, improvements, and other changes to its products and services at any time and to discontinue any product or service without notice. Customers should obtain the latest relevant information before placing orders and should verify that such information is current and complete. All products are sold subject to TI's terms and conditions of sale supplied at the time of order acknowledgment.

TI warrants performance of its hardware products to the specifications applicable at the time of sale in accordance with TI's standard warranty. Testing and other quality control techniques are used to the extent TI deems necessary to support this warranty. Except where mandated by government requirements, testing of all parameters of each product is not necessarily performed.

TI assumes no liability for applications assistance or customer product design. Customers are responsible for their products and applications using TI components. To minimize the risks associated with customer products and applications, customers should provide adequate design and operating safeguards.

TI does not warrant or represent that any license, either express or implied, is granted under any TI patent right, copyright, mask work right, or other TI intellectual property right relating to any combination, machine, or process in which TI products or services are used. Information published by TI regarding third-party products or services does not constitute a license from TI to use such products or services or a warranty or endorsement thereof. Use of such information may require a license from a third party under the patents or other intellectual property of the third party, or a license from TI under the patents or other intellectual property of TI.

Reproduction of information in TI data books or data sheets is permissible only if reproduction is without alteration and is accompanied by all associated warranties, conditions, limitations, and notices. Reproduction of this information with alteration is an unfair and deceptive business practice. TI is not responsible or liable for such altered documentation.

Resale of TI products or services with statements different from or beyond the parameters stated by TI for that product or service voids all express and any implied warranties for the associated TI product or service and is an unfair and deceptive business practice. TI is not responsible or liable for any such statements.

Following are URLs where you can obtain information on other Texas Instruments products and application solutions:

<b>Products</b>		<b>Applications</b>	
Amplifiers	<a href="http://amplifier.ti.com">amplifier.ti.com</a>	Audio	<a href="http://www.ti.com/audio">www.ti.com/audio</a>
Data Converters	<a href="http://dataconverter.ti.com">dataconverter.ti.com</a>	Automotive	<a href="http://www.ti.com/automotive">www.ti.com/automotive</a>
DSP	<a href="http://dsp.ti.com">dsp.ti.com</a>	Broadband	<a href="http://www.ti.com/broadband">www.ti.com/broadband</a>
Interface	<a href="http://interface.ti.com">interface.ti.com</a>	Digital Control	<a href="http://www.ti.com/digitalcontrol">www.ti.com/digitalcontrol</a>
Logic	<a href="http://logic.ti.com">logic.ti.com</a>	Military	<a href="http://www.ti.com/military">www.ti.com/military</a>
Power Mgmt	<a href="http://power.ti.com">power.ti.com</a>	Optical Networking	<a href="http://www.ti.com/opticalnetwork">www.ti.com/opticalnetwork</a>
Microcontrollers	<a href="http://microcontroller.ti.com">microcontroller.ti.com</a>	Security	<a href="http://www.ti.com/security">www.ti.com/security</a>
		Telephony	<a href="http://www.ti.com/telephony">www.ti.com/telephony</a>
		Video & Imaging	<a href="http://www.ti.com/video">www.ti.com/video</a>
		Wireless	<a href="http://www.ti.com/wireless">www.ti.com/wireless</a>

Mailing Address: Texas Instruments  
Post Office Box 655303 Dallas, Texas 75265

Copyright © 2003, Texas Instruments Incorporated



Компания «ЭлектроПласт» предлагает заключение долгосрочных отношений при поставках импортных электронных компонентов на взаимовыгодных условиях!

Наши преимущества:

- Оперативные поставки широкого спектра электронных компонентов отечественного и импортного производства напрямую от производителей и с крупнейших мировых складов;
- Поставка более 17-ти миллионов наименований электронных компонентов;
- Поставка сложных, дефицитных, либо снятых с производства позиций;
- Оперативные сроки поставки под заказ (от 5 рабочих дней);
- Экспресс доставка в любую точку России;
- Техническая поддержка проекта, помощь в подборе аналогов, поставка прототипов;
- Система менеджмента качества сертифицирована по Международному стандарту ISO 9001;
- Лицензия ФСБ на осуществление работ с использованием сведений, составляющих государственную тайну;
- Поставка специализированных компонентов (Xilinx, Altera, Analog Devices, Intersil, Interpoint, Microsemi, Aeroflex, Peregrine, Syfer, Eurofarad, Texas Instrument, Miteq, Cobham, E2V, MA-COM, Hittite, Mini-Circuits, General Dynamics и др.);

Помимо этого, одним из направлений компании «ЭлектроПласт» является направление «Источники питания». Мы предлагаем Вам помощь Конструкторского отдела:

- Подбор оптимального решения, техническое обоснование при выборе компонента;
- Подбор аналогов;
- Консультации по применению компонента;
- Поставка образцов и прототипов;
- Техническая поддержка проекта;
- Защита от снятия компонента с производства.



#### Как с нами связаться

**Телефон:** 8 (812) 309 58 32 (многоканальный)

**Факс:** 8 (812) 320-02-42

**Электронная почта:** [org@eplast1.ru](mailto:org@eplast1.ru)

**Адрес:** 198099, г. Санкт-Петербург, ул. Калинина, дом 2, корпус 4, литера А.