



IGPS-1080-24V-I

Industrial 8-port unmanaged Gigabit PoE Ethernet switch with 8x10/100/1000Base-T(X) P.S.E., 24VDC power inputs, Isolation version

Features

- IGPS-1080-24V-I provide 8x10/100/1000Base-T(X) PoE (P.S.E.) ports
- Supports IEEE 802.3at compliant PoE and total power budget is 120Watts with maximum 30Watts per port
- Supports Isolation protection
- Supports jumbo frame up to 9.6KBytes
- Supports dual 24VDC power inputs for power redundancy
- Supports auto-negotiation and auto-MDI/MDI-X
- Supports store and forward transmission
- Supports flow control
- Rigid IP-30 housing design
- DIN-Rail and wall mounting enabled

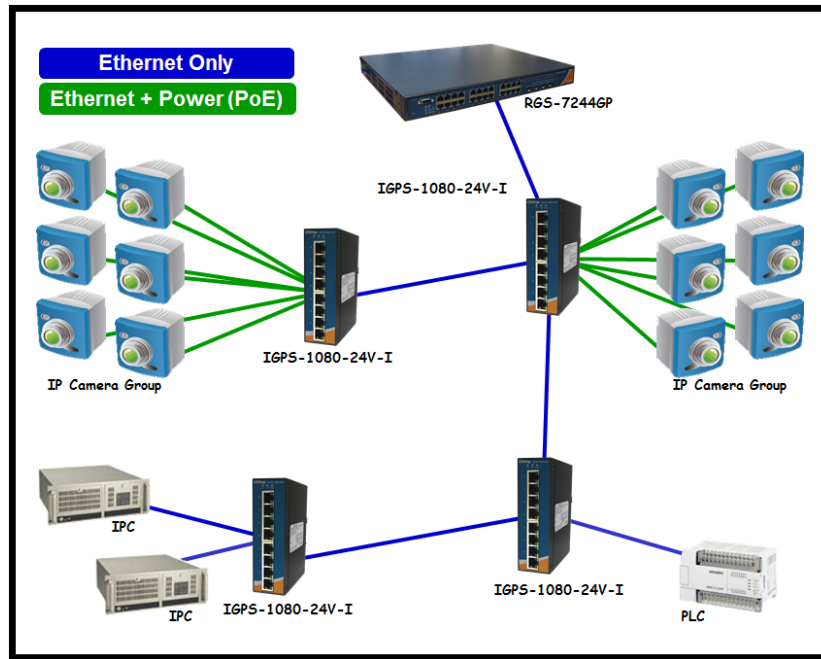


Introduction

IGPS-1080-24V-I is an unmanaged Gigabit PoE Ethernet switch with P.S.E. function. IGPS-1080-24V-I supports Power over Ethernet, a system to transmit electrical power, along with data, to remote devices over standard twisted-pair cable in an Ethernet network. IGPS-1080-24V-I support dual 24VDC power inputs and generates 50VDC P.S.E. power output per port. IGPS-1080-24V-I PoE switch has 8X10/100/1000Base-T(X) P.S.E. (Power Sourcing Equipment) ports. P.S.E. is a device (switch or hub for instance) that will provide power in a PoE setup. The wide operating temperature range from -40°C to 70°C can satisfy most of operating environment. Therefore, the switch is one of the most reliable choices for PoE Ethernet application.

Practical Operation

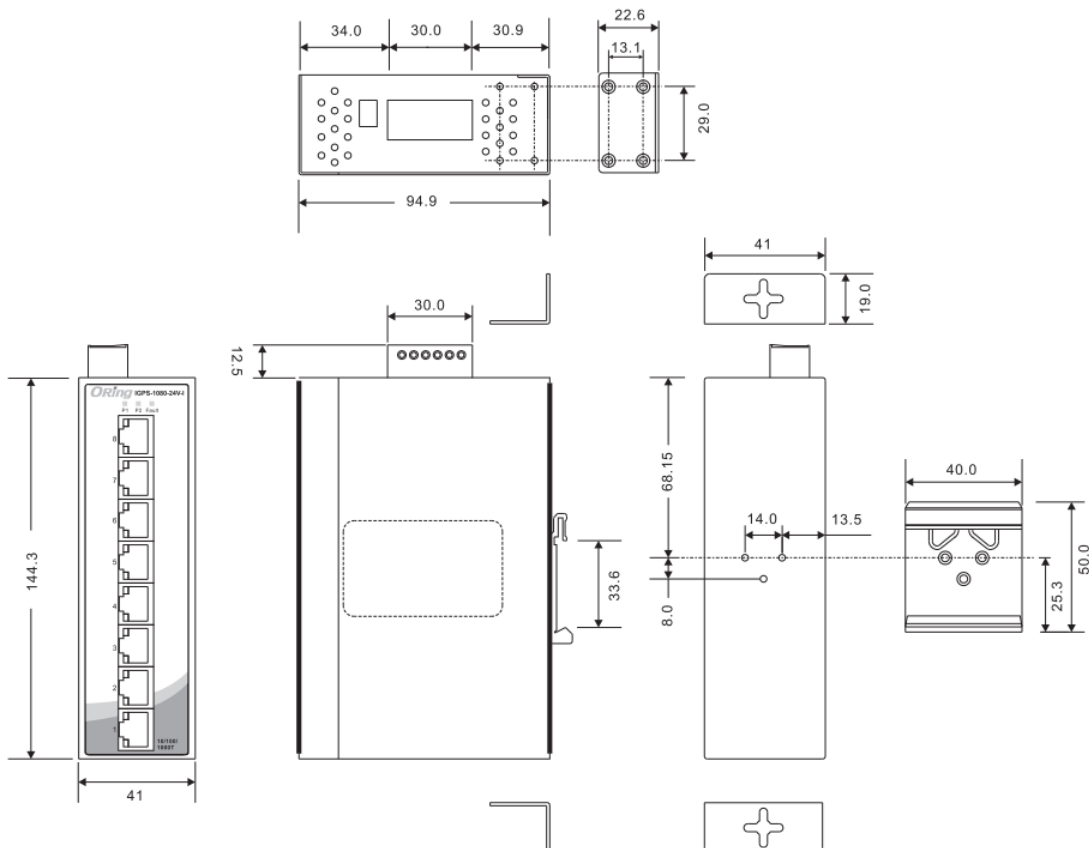
IGPS-1080-24V-I can be used in connecting several PoE P.D. Ethernet devices like IP-Camera or other Ethernet devices. In addition, there are two different power inputs at terminal block to avoid interruption caused by power down. When the primary DC power input fails, the backup power input will take over immediately to guarantee a non-stop operation.



Connections of Ethernet devices

Dimension

(Unit = mm)



PoE Pin Definition

- 10/100Base-T(X) P.S.E. RJ-45 port

| RJ-45 Pin Definition | |
|----------------------|----------------------------|
| Pin No. | Description |
| #1 | TD+ with PoE Power input + |
| #2 | TD- with PoE Power input + |
| #3 | RD+ with PoE Power input - |
| #6 | RD- with PoE Power input - |

- 1000Base-T P.S.E. RJ-45 port

| RJ-45 Pin Definition | |
|----------------------|-------------------------------|
| Pin No. | Description |
| #1 | BI_DA+ with PoE Power input + |
| #2 | BI_DA- with PoE Power input + |
| #3 | BI_DB+ with PoE Power input - |
| #4 | BI_DC+ |
| #5 | BI_DC- |
| #6 | BI_DB- with PoE Power input - |
| #7 | BI_DD+ |
| #8 | BI_DD- |

Specifications

| | |
|--|---|
| ORing Switch Model | IGPS-1080-24V-I |
| Physical Ports | |
| 10/100/1000Base-T(X) Ports in RJ45 With P.S.E. | 8 |
| Technology | |
| Ethernet Standards | IEEE 802.3 for 10Base-T IEEE 802.3u for 100Base-TX IEEE 802.3ab for 1000Base-T IEEE 802.3x for Flow control IEEE 802.3at compliant PoE specification (up to 30 Watts per port for P.S.E.) |
| MAC Table | 4K MAC addresses |
| Processing | Store-and-Forward |
| Jumbo Frame | Up to 9.6KBytes |
| LED indicators | |
| Power indicator | Green : Power LED x 2 |
| Fault indicator | Amber : Indicate PWR1 or PWR2 failure |
| 10/100/1000Base-T(X) RJ45 port indicator and PoE indicator | Dual color LED for port Speed/Link/Act : Green for 1Gbps link/act, Amber for 10/100Mbps link/act Green for PoE power injected. |

| DIP-Switch | |
|-----------------------------|--|
| DIP-Switch 1 | Power-1 failed warning : (ON) enable, (OFF) disable |
| DIP-Switch 2 | Power-2 failed warning : (ON) enable, (OFF) disable |
| Fault contact | |
| Relay | Relay output to carry capacity of 1A at 24VDC |
| Power | |
| Redundant Input power | Dual DC inputs. 24~36VDC on 6-pin terminal block. |
| PoE output power | 52 ~ 57VDC |
| Power consumption (Typ.) | 7.8 Watts |
| Overload current protection | Present |
| Reverse polarity protection | NOT Present |
| Physical Characteristic | |
| Enclosure | IP-30 |
| Dimension (W x D x H) | 41 (W) x 94.9 (D) x 144.3(H) mm |
| Weight (g) | 452 g |
| Environmental | |
| Storage Temperature | -40 to 85°C (-40 to 185°F) |
| Operating Temperature | -40 to 70°C (-40 to 158°F) |
| Operating Humidity | 5% to 95% Non-condensing |
| Regulatory approvals | |
| EMI | FCC Part 15, CISPR (EN55022) class A, E-MARK |
| EMS | EN61000-4-2 (ESD), EN61000-4-3 (RS), EN61000-4-4 (EFT), EN61000-4-5 (Surge), EN61000-4-6 (CS), EN61000-4-8, EN61000-4-11 |
| Shock | IEC60068-2-27 |
| Free Fall | IEC60068-2-32 |
| Vibration | IEC60068-2-6 |
| Warranty | 5 years |

Ordering Information

IGPS-1AAB-24V-I

| Code Definition | 10/100/1000Base-T(X) P.S.E. | Port Number | Additional Port Number |
|-----------------|-----------------------------|---|------------------------|
| Option | - 08: 8 ports | - 0: 0 port | |
| Available Model | Model Name | Description | |
| | IGPS-1080-24V-I | Industrial 8-port unmanaged Gigabit PoE Ethernet switch with 8x10/100/1000Base-T(X) P.S.E., 24VDC power inputs, Isolation version | |

Packing List

- IGPS-1080-24V-I x 1
- Din-Rail Kit x 1
- Wall-Mount Kit x 1
- Quick Installation Guide x 1

Optional Accessories

- DR-45-12/24 : 45 Watts@12/24VDC DIN-Rail power supply
- DR-75-12/24 : 75 Watts@12/24VDC DIN-Rail power supply
- DR-120-12/24 : 120 Watts@12/24VDC DIN-Rail power supply



Компания «ЭлектроПласт» предлагает заключение долгосрочных отношений при поставках импортных электронных компонентов на взаимовыгодных условиях!

Наши преимущества:

- Оперативные поставки широкого спектра электронных компонентов отечественного и импортного производства напрямую от производителей и с крупнейших мировых складов;
- Поставка более 17-ти миллионов наименований электронных компонентов;
- Поставка сложных, дефицитных, либо снятых с производства позиций;
- Оперативные сроки поставки под заказ (от 5 рабочих дней);
- Экспресс доставка в любую точку России;
- Техническая поддержка проекта, помощь в подборе аналогов, поставка прототипов;
- Система менеджмента качества сертифицирована по Международному стандарту ISO 9001;
- Лицензия ФСБ на осуществление работ с использованием сведений, составляющих государственную тайну;
- Поставка специализированных компонентов (Xilinx, Altera, Analog Devices, Intersil, Interpoint, Microsemi, Aeroflex, Peregrine, Syfer, Eurofarad, Texas Instrument, Miteq, Cobham, E2V, MA-COM, Hittite, Mini-Circuits, General Dynamics и др.);

Помимо этого, одним из направлений компании «ЭлектроПласт» является направление «Источники питания». Мы предлагаем Вам помощь Конструкторского отдела:

- Подбор оптимального решения, техническое обоснование при выборе компонента;
- Подбор аналогов;
- Консультации по применению компонента;
- Поставка образцов и прототипов;
- Техническая поддержка проекта;
- Защита от снятия компонента с производства.



Как с нами связаться

Телефон: 8 (812) 309 58 32 (многоканальный)

Факс: 8 (812) 320-02-42

Электронная почта: org@eplast1.ru

Адрес: 198099, г. Санкт-Петербург, ул. Калинина, дом 2, корпус 4, литера А.