

# T-3-1/4 & T5 Miniature Wedge Base

## 23 SERIES

- MINIATURE WEDGE BASE NON-GROUNDED OR GROUNDED LAMPHOLDERS
- BLACK NYLON HOUSING (UNLESS OTHERWISE NOTED)
- 6" WIRE LEADS, PRINTED CIRCUIT BOARD OR SOLDER LUG TERMINALS
- MAXIMUM RATINGS: 20 WATTS, 28 VOLTS
- UL RECOGNIZED • UL FILE E20356

### Overview

The 23 Series lampholders are designed for automotive and appliance applications. Most lampholders can be supplied as either non-grounded or grounded units with printed circuit board or solder lug terminals or 6" wire leads. Many bracket and mounting options are available including plug buttons for 5/8" mounting holes and a 5/8" twist and lock socket. Lampholders are designed for use in low voltage applications with T-5 & T-3 1/4 wedge base lamps.

### Specifications

**Housing:** black nylon, unless otherwise specified. white housing also available.

**Contacts:** brass.

#### Terminals:

**Solder lug:** electro tinned brass, 0.110" length x 0.010" thick, with one wire hole 3/32"x1/16" in diameter. Non-grounded units are supplied with two terminals. Grounded units are supplied with one terminal.

**Printed circuit board terminals:** brass.

**Wire Leads: 6" Leads:** #22 AWG, black, stranded tinned copper, PVC insulated, UL/CSA rated 105°C, stripped 1/2". Non-grounded units are supplied with two 6" wire leads. Grounded units are supplied with one 6" wire lead. Custom wire lengths, stripping, termination and wire types are also available.

#### Mounting:

**Brackets:** 0.025" to 0.032" zinc plated steel.

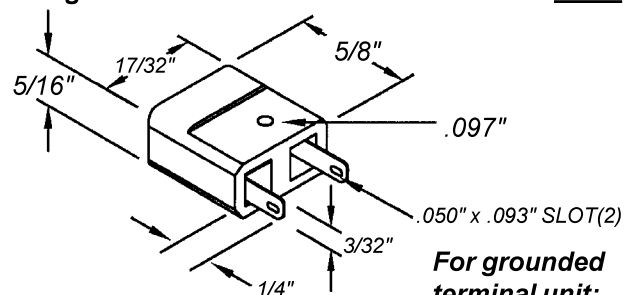
**Plug buttons:** for 5/8" mounting hole, nylon or zinc plated steel.

**Twist & Lock:** for 5/8" mounting hole.

**Maximum rating:** 20 Watts, 28 Volts.

#### Non-grounded unit

23-07



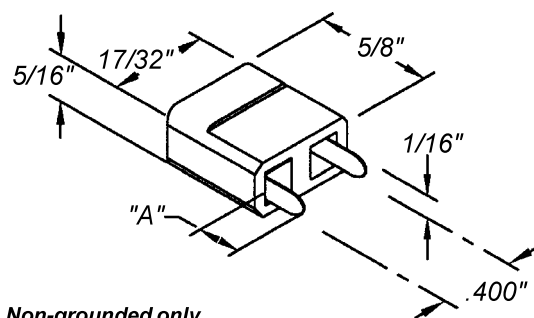
**For grounded terminal unit:**  
**23-07-1.**

#### For wire leads:

Non-grounded unit: **23-207.** Grounded unit: **23-207-1.**

#### For printed circuit board applications.

23-35



Non-grounded only.

Part Number	Dimension "A"	Brass Terminals
23-35	0.250"	Electro-tinned
23-35XP17	0.150"	Plain Brass
23-35XP18	0.090"	Plain Brass
23-35XP19	0.150"	Electro-tinned
23-35XP20	0.100"	Electro-tinned

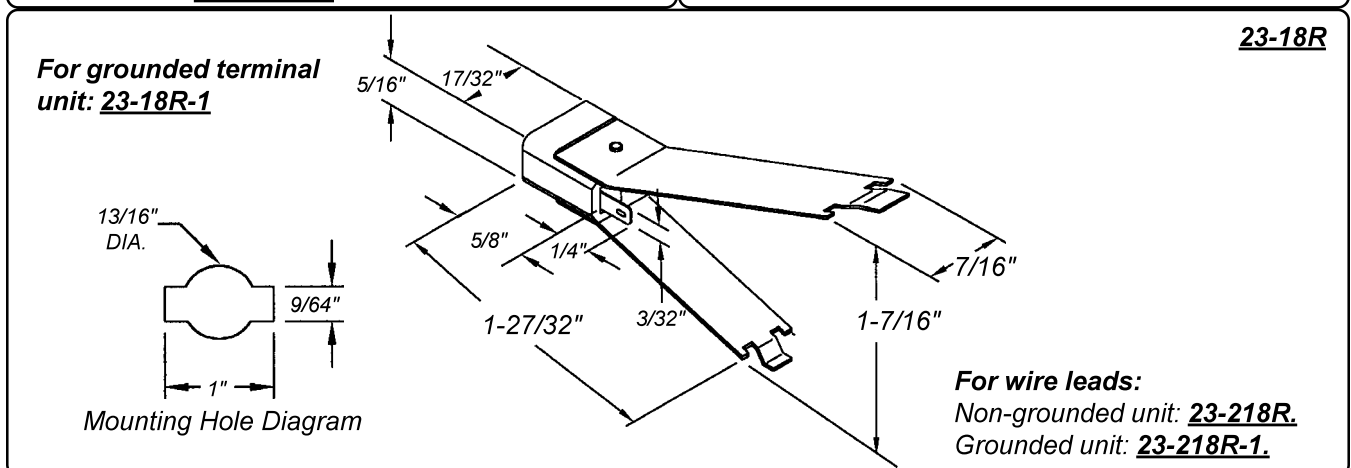
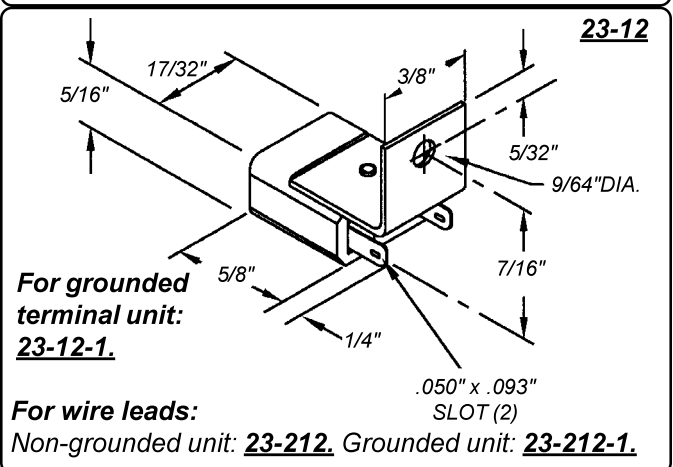
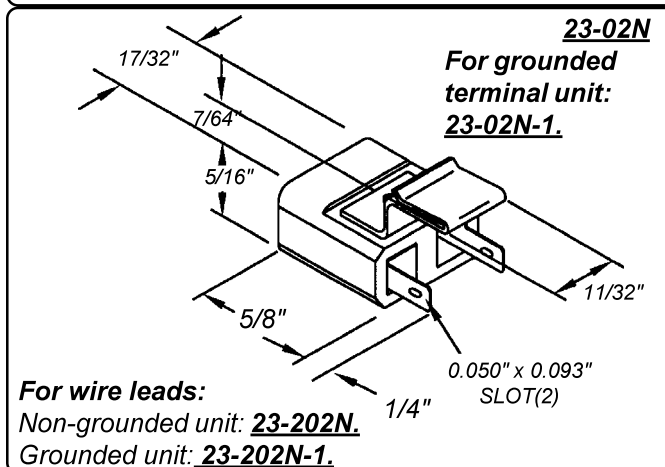
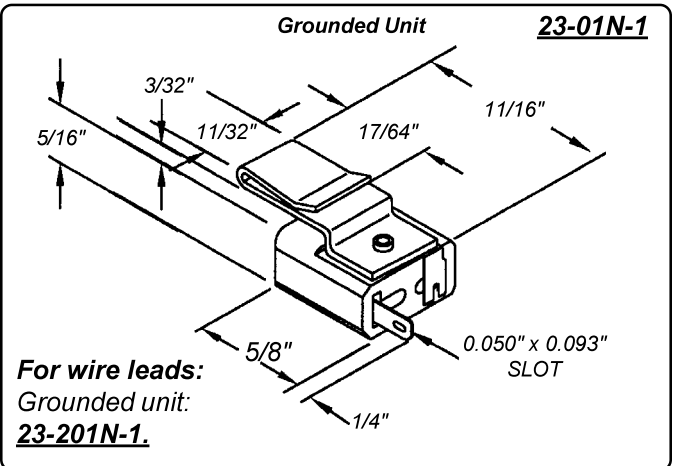
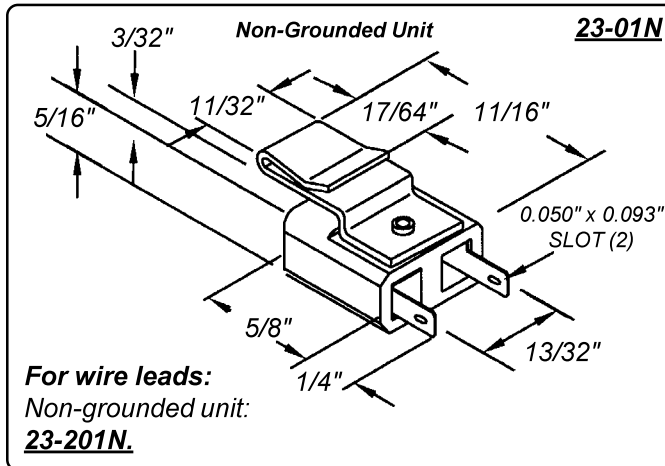
Standard version will be supplied without a mounting hole. 0.097" diameter hole in housing is an option.

# T-3-1/4 & T5 Miniature Wedge Base

**23 SERIES** • UL Recognized  
 Maximum Rating: 20 Watts, 28 Volts  
 Non-Grounded or Grounded

**Black Nylon\* Housing**  
**Solder Lug Terminals, 6" Wire Leads**  
**or Printed Circuit Board Terminals**

\* Nylon Housing unless otherwise noted.



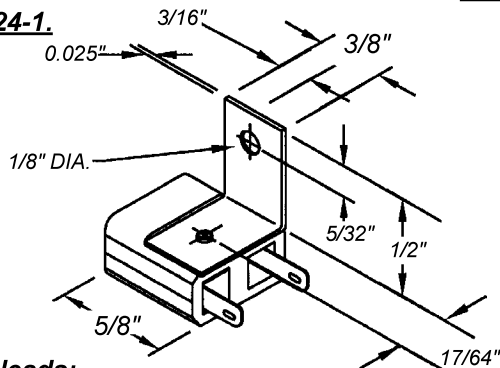
# T-3-1/4 & T5 Miniature Wedge Base

**23 SERIES** • UL Recognized  
Maximum Rating: 20 Watts, 28 Volts  
Non-Grounded or Grounded

**Black Nylon\* Housing**  
**Solder Lug Terminals, 6" Wire Leads**  
**or Printed Circuit Board Terminals**

\* Nylon Housing unless otherwise noted.

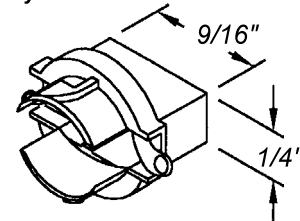
**For grounded terminal unit: 23-24-1.** **23-24**



**For wire leads:**  
Non-grounded unit: 23-224. Grounded unit: 23-224-1.

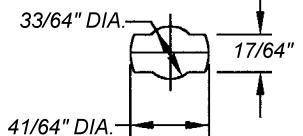
**Non-grounded only.**

**23-33TLPC**



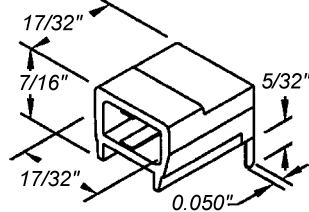
Designed for  
rear mounting  
on a printed  
circuit board.

Mounting Hole Diagram



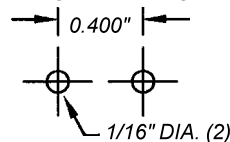
**Non-grounded only.**

**23-35H**



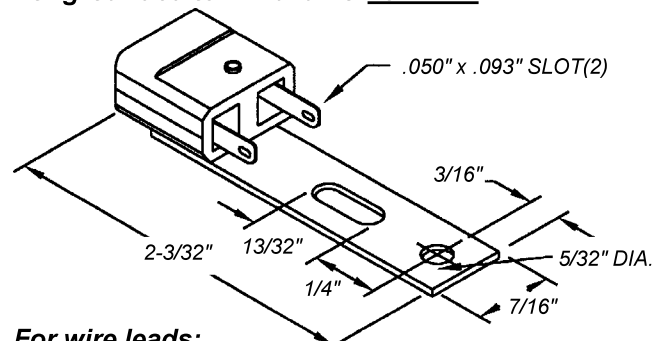
Designed for  
mounting on  
a printed  
circuit board.

Mounting Hole Diagram



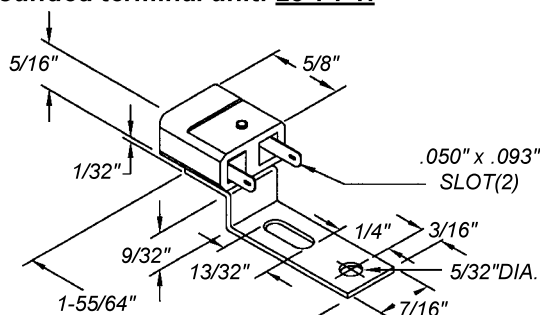
**For grounded terminal unit: 23-72N-1**

**23-72N**



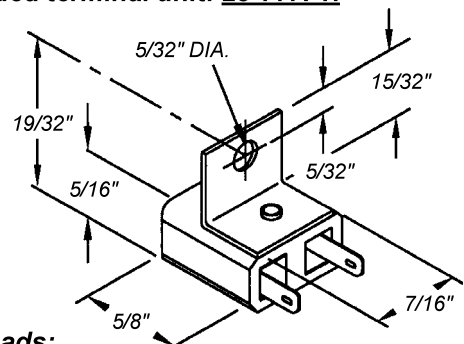
**For wire leads:**  
Non-grounded unit: 23-272N.  
Grounded unit: 23-272N-1.

**For grounded terminal unit: 23-74-1.** **23-74**



**For wire leads:**  
Non-grounded unit: 23-274. Grounded unit: 23-274-1.

**For grounded terminal unit: 23-77R-1.** **23-77R**



**For wire leads:**  
Non-grounded unit: 23-277R.  
Grounded unit: 23-277R-1.

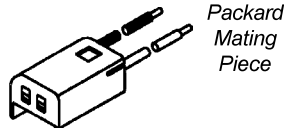
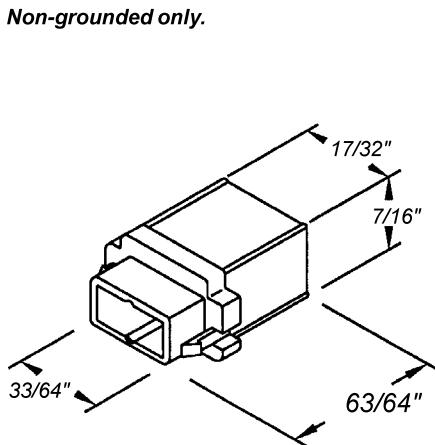
# T-3-1/4 & T5 Miniature Wedge Base

**23 SERIES** • UL Recognized  
Maximum Rating: 20 Watts, 28 Volts  
Non-Grounded or Grounded

**Black Nylon\* Housing**  
**Solder Lug Terminals, 6" Wire Leads**  
**or Printed Circuit Board Terminals**

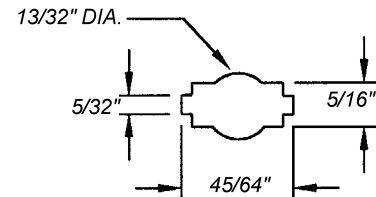
\* Nylon Housing unless otherwise noted.

Non-grounded only.



Note:  
Packard  
Mating Piece  
Not Supplied  
Packard Mating  
Part Numbers:  
Housing 1205-9253  
Terminals 1204-7883

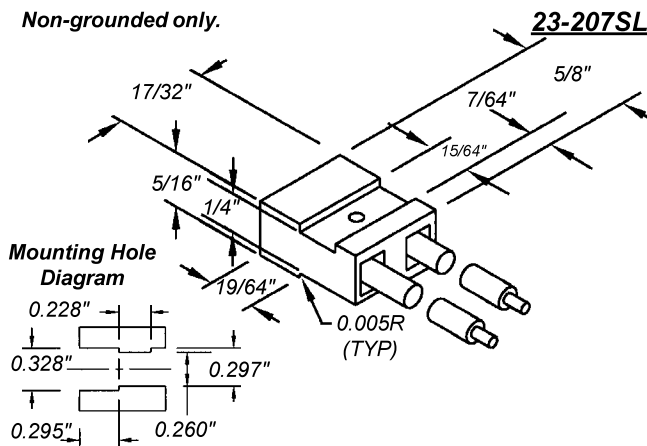
**23-METRI-PACK**



**23-METRI-PACK  
MOUNTING HOLE**

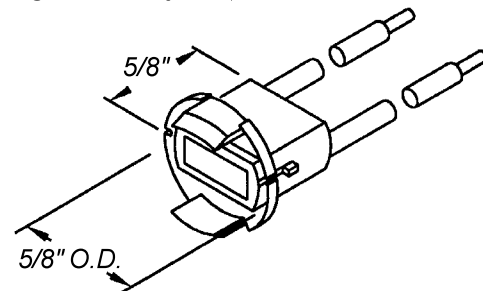
Recommended panel thickness  
range: 0.068" to 0.075".

Non-grounded only.



**23-207SL**

Non-grounded only.



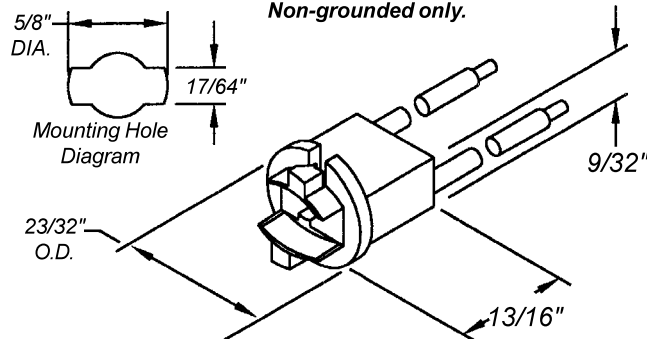
**23-140PL**

Plug button for 5/8" mounting hole  
Panel thickness: 1/32" to 3/32".

For solder lug terminals: **23-140PL-T.**

**TWIST & LOCK MOUNTING 23-233TL**

Non-grounded only.



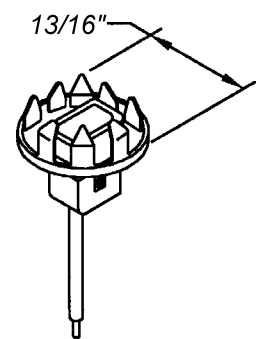
For solder lug terminals:  
**23-233TL.**

Panel thickness  
range: 1/32" to 3/64"

For non-grounded  
wire lead unit: **23-240.**

For solder lug terminals:  
Non-grounded unit: **23-40.**  
Grounded unit: **23-40-1.**

**23-240-1**



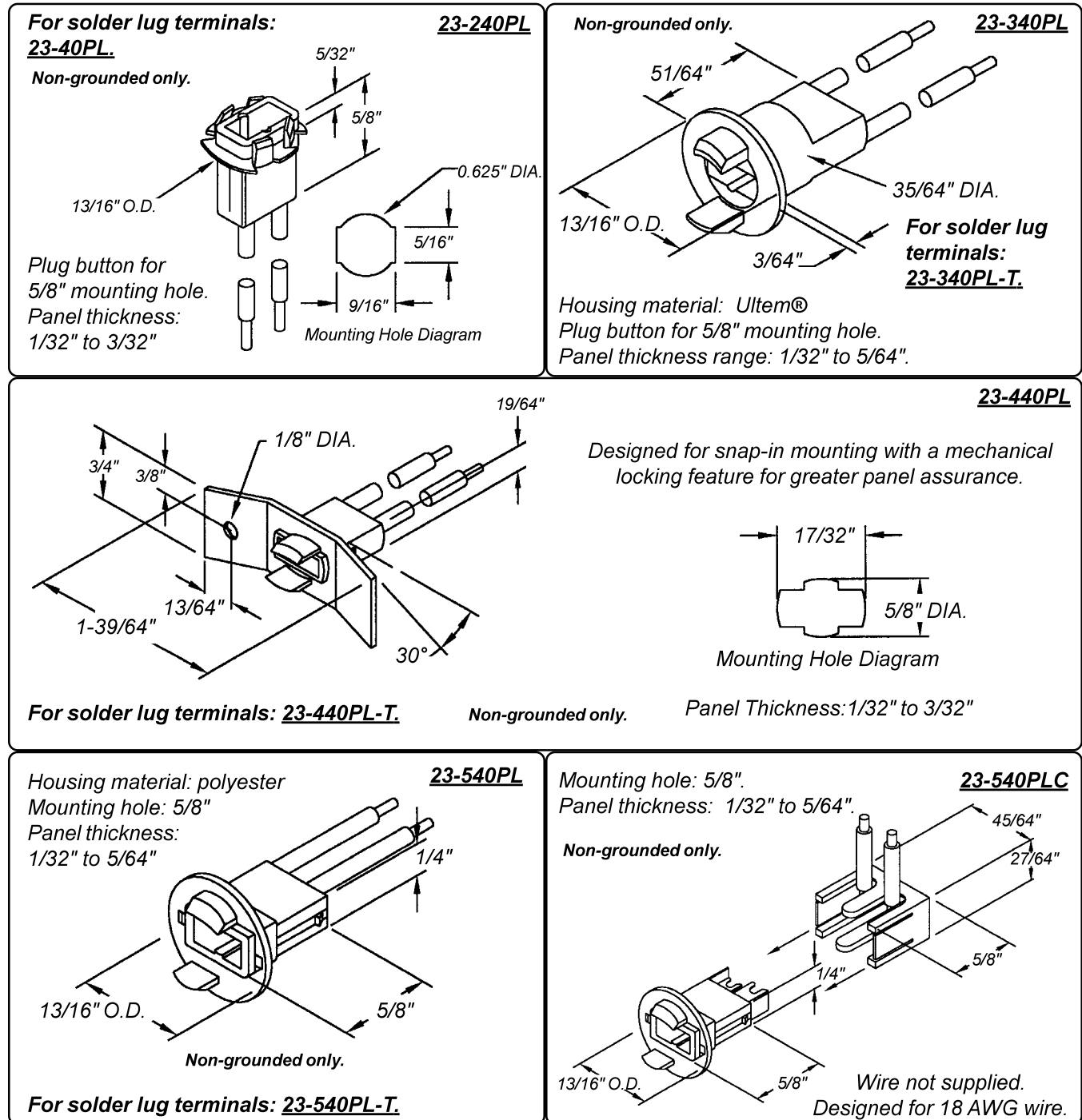
Plug button: zinc plated steel  
Mounting hole: 5/8" Panel thickness: 1/16" to 3/32"

# T-3-1/4 & T5 Miniature Wedge Base

**23 SERIES** • UL Recognized  
Maximum Rating: 20 Watts, 28 Volts  
Non-Grounded or Grounded

**Black Nylon\* Housing**  
**Solder Lug Terminals, 6" Wire Leads**  
**or Printed Circuit Board Terminals**

\* Nylon Housing unless otherwise noted.



# T-3-1/4 & T5 Miniature Wedge Base

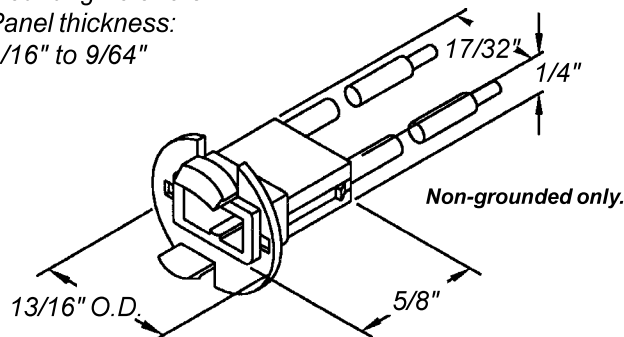
**23 SERIES** • UL Recognized  
**Maximum Rating: 20 Watts, 28 Volts**  
**Non-Grounded or Grounded**

**Black Nylon\* Housing**  
**Solder Lug Terminals, 6" Wire Leads**  
**or Printed Circuit Board Terminals**

\* Nylon Housing unless otherwise noted.

Housing material: polyester  
 Mounting hole: 5/8"  
 Panel thickness:  
 1/16" to 9/64"

**23-640PL**

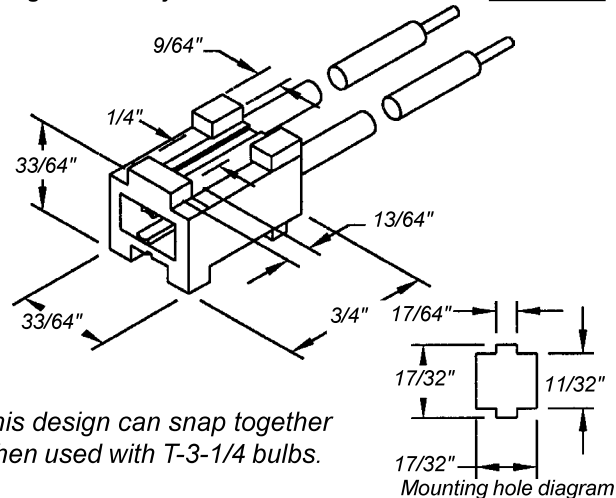


Designed for  
 firm, snap fit into  
 thicker panels.

**For solder lug terminals:**  
**23-640PL-T.**

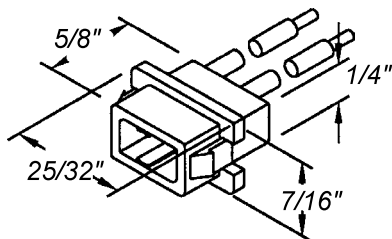
**Non-grounded only.**

**23-740SL**

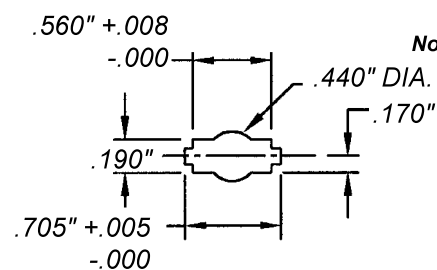


This design can snap together  
 when used with T-3-1/4 bulbs.

Mounting hole diagram



**For solder lug terminals: 23-740RPL-T.**

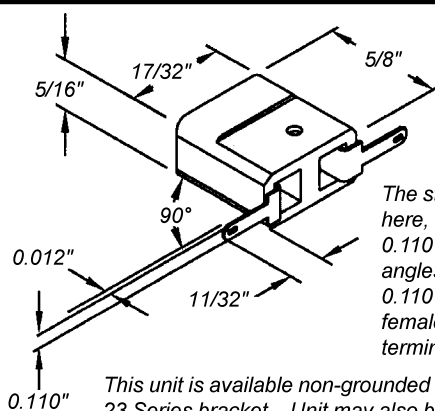


Mounting hole diagram

Recommended panel thickness range: .080"

**23-740RPL**

**Non-grounded only.**



The standard unit, featured  
 here, is supplied with two  
 0.110" tab terminals at 90°  
 angles which mate with  
 0.110" width x .020" thick  
 female quick connect  
 terminals.

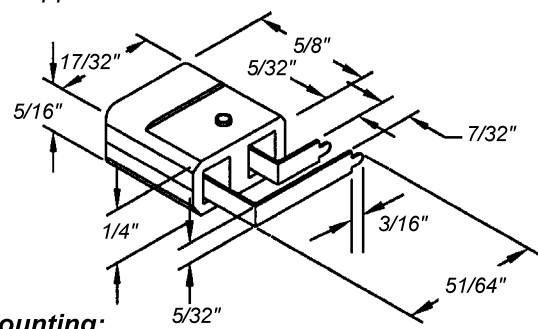
This unit is available non-grounded or grounded with any  
 23 Series bracket. Unit may also be supplied grounded  
 with one solder terminal.

**23-07RT**

Designed for right angle circuit  
 board applications:

**23-35RA**

**Non-grounded only.**



**Mounting:**

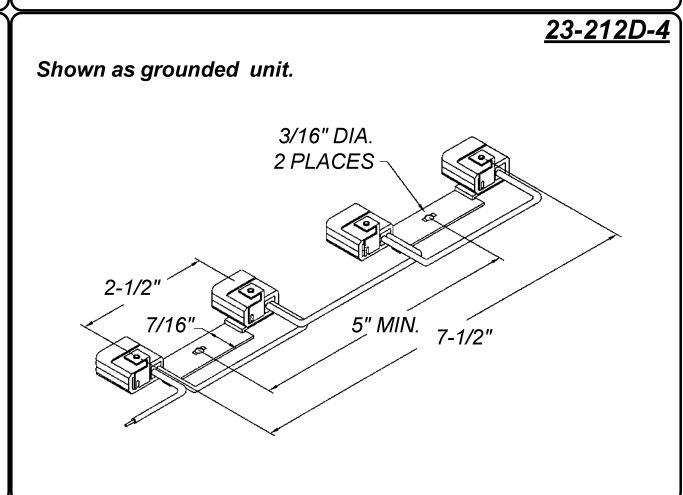
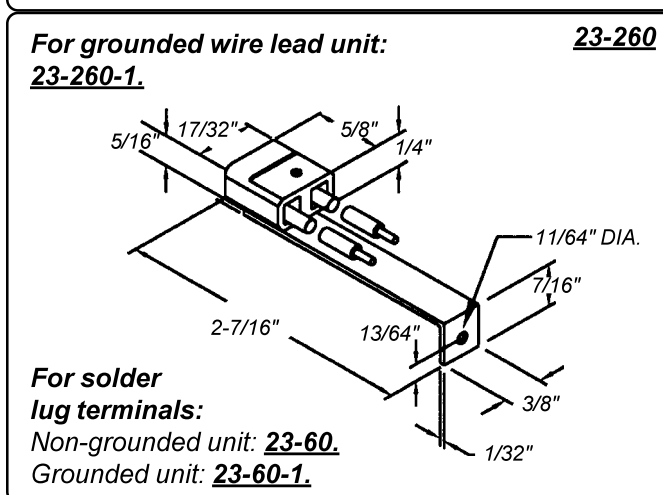
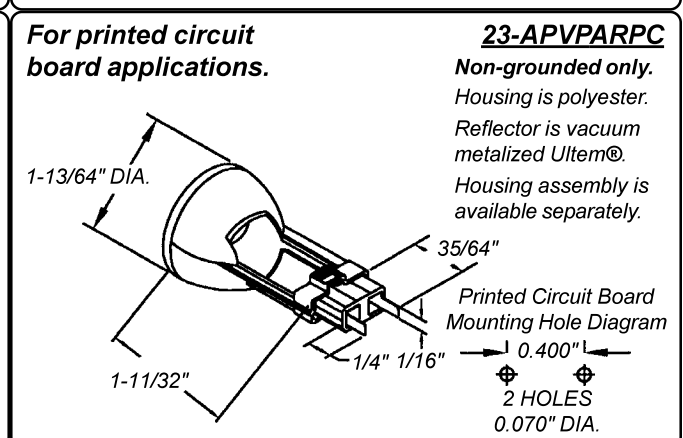
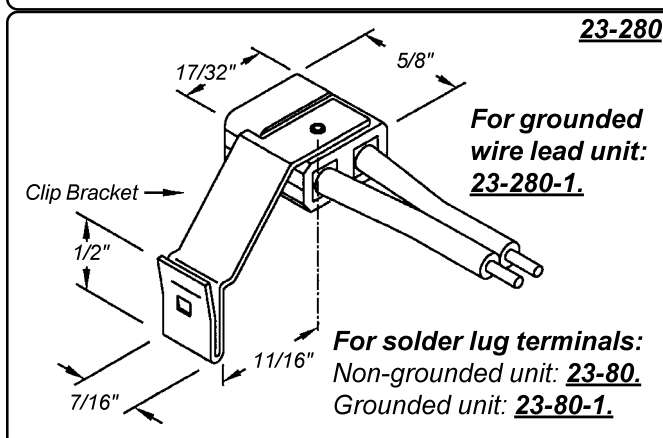
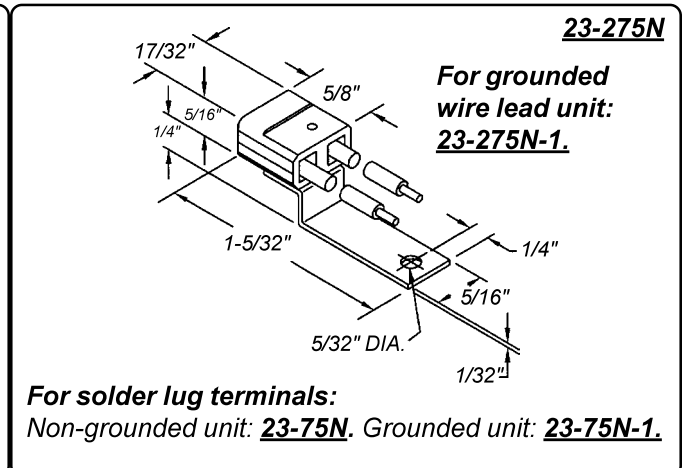
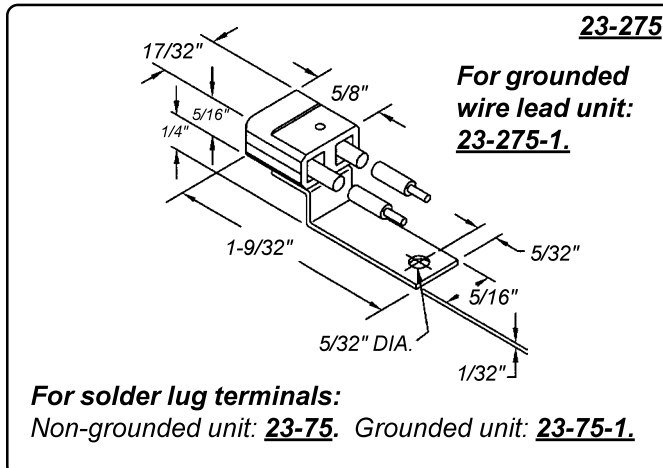
3/32" diameter mounting holes with 7/32" spacing.

# T-3-1/4 & T5 Miniature Wedge Base

**23 SERIES** • UL Recognized  
Maximum Rating: 20 Watts, 28 Volts  
Non-Grounded or Grounded

**Black Nylon\* Housing**  
**Solder Lug Terminals, 6" Wire Leads**  
**or Printed Circuit Board Terminals**

\* Nylon Housing unless otherwise noted.





# T-3-1/4 & T5 Miniature Wedge Base

**23 SERIES** • UL Recognized  
 Maximum Rating: 20 Watts, 28 Volts  
 Non-Grounded or Grounded

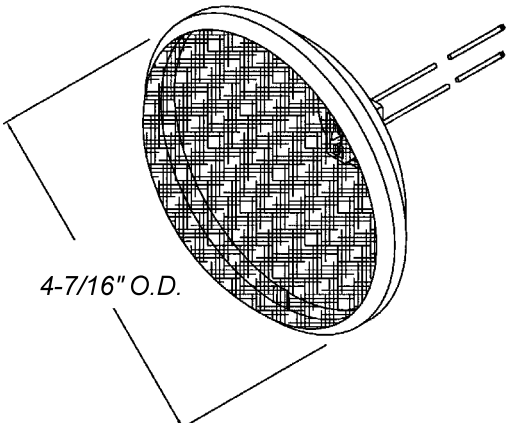
**Black Nylon\* Housing**  
**Solder Lug Terminals, 6" Wire Leads**  
**or Printed Circuit Board Terminals**

\* Nylon Housing unless otherwise noted.

Plastic lens & reflector can be supplied with a T-5 lamp already inside or without lamp.

**PLR36-1700W** is supplied without a lamp.

Contact customer service with your lamp requirements.

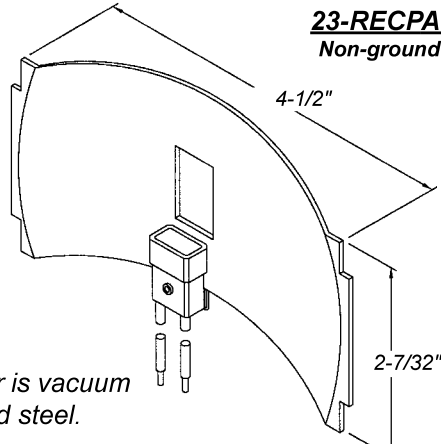


4-7/16" O.D.

**PLR36-1700W**  
Non-grounded only.

Snap-Action Lens and Snap-In Socket design facilitate lamp installation.

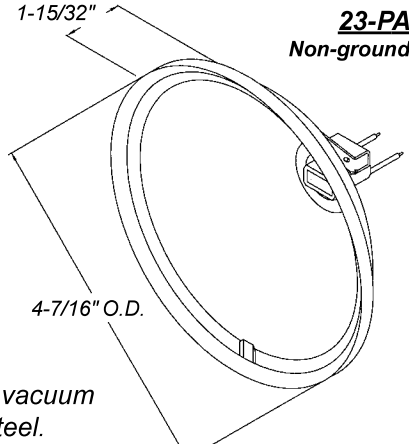
Reflector is vacuum metalized high impact Styrene®.



4-1/2"

2-7/32"

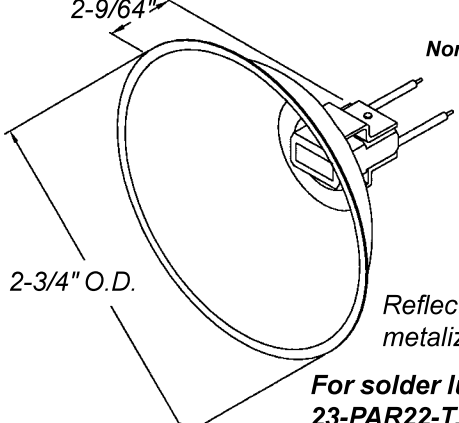
Reflector is vacuum metalized steel.



1-15/32"

4-7/16" O.D.

Reflector is vacuum metalized steel.

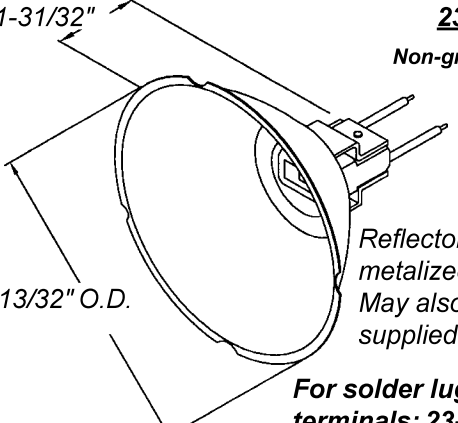


2-9/64"

2-3/4" O.D.

Reflector is vacuum metalized aluminum.

**For solder lug terminals: 23-PAR22-T.**



1-31/32"

2-13/32" O.D.

Reflector is vacuum metalized steel. May also be supplied without lip.

**For solder lug terminals: 23-PAR18-T.**





Компания «ЭлектроПласт» предлагает заключение долгосрочных отношений при поставках импортных электронных компонентов на взаимовыгодных условиях!

Наши преимущества:

- Оперативные поставки широкого спектра электронных компонентов отечественного и импортного производства напрямую от производителей и с крупнейших мировых складов;
- Поставка более 17-ти миллионов наименований электронных компонентов;
- Поставка сложных, дефицитных, либо снятых с производства позиций;
- Оперативные сроки поставки под заказ (от 5 рабочих дней);
- Экспресс доставка в любую точку России;
- Техническая поддержка проекта, помощь в подборе аналогов, поставка прототипов;
- Система менеджмента качества сертифицирована по Международному стандарту ISO 9001;
- Лицензия ФСБ на осуществление работ с использованием сведений, составляющих государственную тайну;
- Поставка специализированных компонентов (Xilinx, Altera, Analog Devices, Intersil, Interpoint, Microsemi, Aeroflex, Peregrine, Syfer, Eurofarad, Texas Instrument, Miteq, Cobham, E2V, MA-COM, Hittite, Mini-Circuits, General Dynamics и др.);

Помимо этого, одним из направлений компании «ЭлектроПласт» является направление «Источники питания». Мы предлагаем Вам помощь Конструкторского отдела:

- Подбор оптимального решения, техническое обоснование при выборе компонента;
- Подбор аналогов;
- Консультации по применению компонента;
- Поставка образцов и прототипов;
- Техническая поддержка проекта;
- Защита от снятия компонента с производства.



#### Как с нами связаться

**Телефон:** 8 (812) 309 58 32 (многоканальный)

**Факс:** 8 (812) 320-02-42

**Электронная почта:** [org@eplast1.ru](mailto:org@eplast1.ru)

**Адрес:** 198099, г. Санкт-Петербург, ул. Калинина, дом 2, корпус 4, литера А.