

# LTC4231 Micropower Hot Swap Controller

## DESCRIPTION

Demonstration circuit 2161A showcases the LTC<sup>®</sup>4231 Micropower Hot Swap™ Controller in a 12V, 3A application. Included on the board are input overvoltage and reverse voltage protection, input voltage dividers for UV and OV detection, an output voltage LED, jumpers to disable UV/OV, manual and remote enable control, and quiescent current measurement. There are turrets provided to monitor input voltage, output voltage, output status, quiescent current, several ground connections, timer pin, and control the ON pin. Input, output and return voltages

are provided on banana jacks. The DC2161A-A version is used to demonstrate the LTC4231-1 which remains off after a current fault, while the DC2161A-B demonstrates the LTC4231-2 which automatically reapplies power after a cool-down period.

**Design files for this circuit board are available at**  
<http://www.linear.com/demo/DC2161A>

LT, LT, LTC, LTM, Linear Technology and the Linear logo are registered trademarks and Hot Swap is a trademark of Linear Technology Corporation. All other trademarks are the property of their respective owners.

## PERFORMANCE SUMMARY

Specifications are at  $T_A = 25^\circ\text{C}$

Table 1

PARAMETER	CONDITIONS	VALUE
Input Supply Voltage Range	Limited by Transient Surge Protector	-24V to +24V
Nominal Operating Voltage		12V
Overvoltage Lockout	Nominal	14.4V
Undervoltage Lockout (Voltage Falling)	Nominal	9.6V
Undervoltage Lockout (Voltage Rising)	Nominal	10.8V
Output Current Limit		3A
Maximum Load Capacitance		600 $\mu$ F
Timer Expiration Period		2ms

Table 2. Power Input and Output Connections

NOMENCLATURE	CONNECTOR	DESCRIPTION
VIN 12V	J1	12V Input
GND	J2	12V Input Return
VOUT 12V, 3A	J3	12V Output
GND	J4	12V Output Return

Table 3. Test Points

NOMENCLATURE	TURRET	DESCRIPTION
VIN 12V	E1	12V Input Monitor
GND	E2, E4, E6, E8	Ground
VOUT 12V, 3A	E3	12V Output Monitor
STATUS	E5	Status, Open Drain when Output Enabled
GND	E6	Ground
IQ	E7	Quiescent Current Monitor. Use Microammeter at This Point When JP2 Selects MEASURE IQ.
ON	E9	Enable LTC4231 Output. Enables Output or Selects External Control of Output
TIMER	E10	TIMER Pin

## JUMPERS

DC2161A contains 3 jumpers. A description of each jumper follows.

**JP1, UV/OV.** This jumper selects whether or not undervoltage or overvoltage lockout is enabled. When the jumper is in the disable position, a UV or OV condition will not block operation of the Hot Swap Controller. The default is ENABLE.

**JP2, IQ.** The LTC4231 is a low power device, meaning it draws very little current to perform its function. Any board leakage on the GATE pin caused by board contamination or a defective MOSFET will cause this current to increase. JP2, when in the MEASURE IQ position, facilitates measurement of the quiescent current of the LTC4231 exclusive of the current of other components on the board, such as LED

D2, output coupling capacitor C3, TVS diode D1, capacitor C1, voltage divider R6, R7, R8 and R9, or any leakage on the board. This current is measured via a microammeter connected between turret E7 and GND. If the MEASURE IQ position is selected, verify a microammeter is connected to prevent damage to the board via leakage between  $V_{IN}$  and the gate of the MOSFETs. The default position for JP2 is NORMAL.

**JP3, ENABLE.** This jumper either enables or disables the output or provides external control of the output. This is provided by the ON pin of the LTC4231. When in the ON position, the 12V  $V_{OUT}$  is enabled. When in the OFF position, the 12V  $V_{OUT}$  is disabled. When in the EXT position, the ON pin is connected via a 100k $\Omega$  resistor from turret E9 to the ON pin of the LTC4231. A logic 1 on this pin will enable the 12V  $V_{OUT}$ . The default position for JP3 is ON.

---

## OPERATING PRINCIPLES

The LTC4231 is a Micropower Hot Swap Controller that has a 2.7V to 36V operating range and a -40V to 40V absolute maximum voltage for the IN pin. This demo circuit is populated for +12V operation, but it can easily be re-adjusted for any voltage between 2.7V and 36V by replacing R6, R7, R8, and R9 in the UVL, UVH, and OV divider string. These values should be selected using guidelines suggested in the LTC4231 data sheet to minimize current

drawn. The DC2161A is populated with a Si7960DP dual MOSFET with one section used as a pass MOSFET and the other section used for reverse voltage protection. It also has a 15m $\Omega$  sense resistor. This combination provides an output current of 3A. Pads are provided on the PCB for external MOSFET and sense resistor connections for other voltages and currents.

The active load should be set to provide a resistive load since the LTC4231 may not start into a constant current load. With the resistive load set at  $5.4\Omega$ , vary the input voltage from 9V to 17V and from 17V to 9V to check the UV and OV thresholds.

Remove the resistive load from the output and replace it with a 500 $\mu$ F capacitor. Observe the polarity when connecting the capacitor. Upon application of input voltage, LED D2 should illuminate to indicate  $V_{OUT}$  is present. This indicates the Hot Swap Controller is capable of starting into a 500 $\mu$ F capacitor.



# DEMO MANUAL DC2161A

## PARTS LIST

ITEM	QTY	REFERENCE	PART DESCRIPTION	MANUFACTURER/PART NUMBER
1	1	C1	CAP., X7R, 0.1 $\mu$ F 25V, 10%, 0603	MURATA, GRM188R71E104KA01D
2	0	C2	CAP., 0402	OPT
3	1	C3	CAP., TANT, 100 $\mu$ F 25V, 20%, 7343	AVX, TAJE107M025RNJ
4	1	C4	CAP., X7R, 0.082 $\mu$ F 16V, 10%, 0402	MURATA, GRM155R71C823KA88D
5	1	D1	DIODE, SUPPRESSORS, 600W, SMB-DIODE	FAIRCHILD SEMI., SMBJ24CA
6	1	D2	LED, GREEN, LED-ROHM-SML-010	ROHM, SML-010FT86
7	10	E1-E10	TURRET, TESTPOINT 0.064"	MILL-MAX, 2308-2-00-80-00-00-07-0
8	2	JP1, JP2	HEADER, 2mm SINGLE 3POS	SULLINS, NRPN031PAEN-RC
9	1	JP3	HEADER, 2mm DOUBLE 3POS	SAMTEC, TMM-103-02-L-D
10	4	J1, J2, J3, J4	JACK, BANANA	KEYSTONE, 575-4
11	1	Q1	MOSFET, DUAL-CH, 60V, S08-POWERPAK	VISHAY SILICONIX, Si7960DP-T1-GE3
12	1	R1	RES., CHIP, 10, 1/16W, 1%, 0603	VISHAY, CRCW060310R0FKEA
13	1	R2	RES., SENSE, 0.015, 1/4W, 1%, 1206	VISHAY, WSL1206R0150FEA
14	1	R3	RES., CHIP, 10, 1/16W, 1%, 0402	VISHAY, CRCW040210R0FKED
15	0	R4	RES., 0402	OPT
16	1	R5	RES., CHIP, 3.32k $\Omega$ , 1/16W, 1%, 0603	VISHAY, CRCW06033K32FKEA
17	1	R6	RES., CHIP, 1.24M $\Omega$ , 1/8W, 1%, 0805	VISHAY, CRCW08051M24FKEA
18	1	R7	RES., CHIP, 12.4k $\Omega$ , 1/16W, 1%, 0402	VISHAY, CRCW040212K4FKED
19	1	R8	RES., CHIP, 24.9k $\Omega$ , 1/16W, 1%, 0402	VISHAY, CRCW040224K9FKED
20	1	R9	RES., CHIP, 75k $\Omega$ , 1/16W, 1%, 0402	VISHAY, CRCW040275K0FKED
21	2	R10, R11	RES., CHIP, 100k $\Omega$ , 1/16W, 5%, 0402	VISHAY, CRCW0402100KJNED
22	3	SHUNTS AS SHOWN ON ASSY DWG	SHUNT, 2mm CTRS.	SAMTEC, 2SN-BK-G
23	4	MH1-MH4	STAND-OFF, NYLON 0.25"	KEYSTONE, 8831 (SNAP ON)

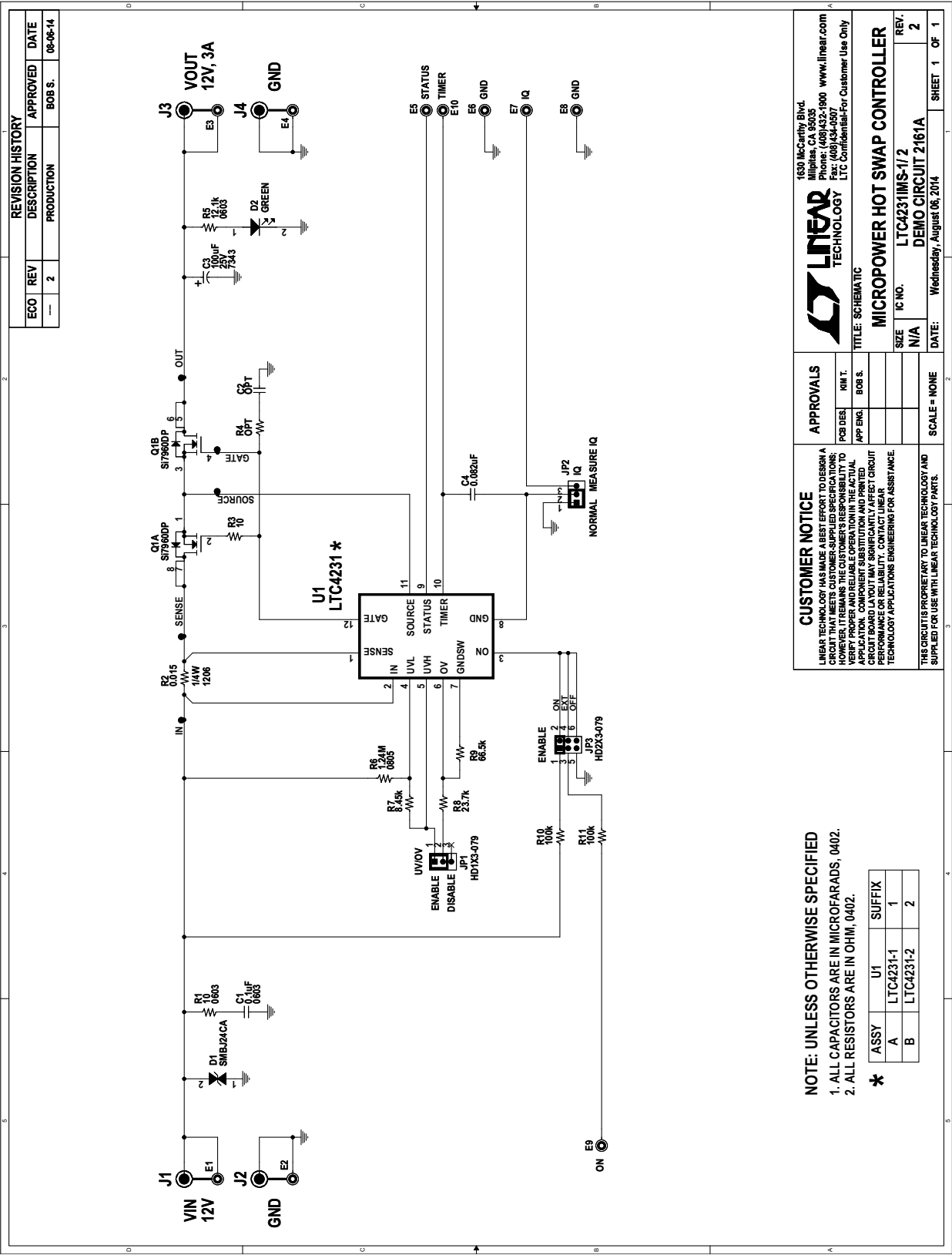
### DC2161A-A Additional Demo Board Circuit Components

1	1		DC2161A-GENERAL BOM	
2	1	U1	I.C., MICROPOWER HOT SWAP CONTROLLER, MS12	LINEAR TECH., LTC4231IMS-1

### DC2161A-B Additional Demo Board Circuit Components

1	1		DC2161A-GENERAL BOM	
2	1	U1	I.C., MICROPOWER HOT SWAP CONTROLLER, MS12	LINEAR TECH., LTC4231IMS-2

SCHEMATIC DIAGRAM



# DEMO MANUAL DC2161A

---

## DEMONSTRATION BOARD IMPORTANT NOTICE

Linear Technology Corporation (LTC) provides the enclosed product(s) under the following **AS IS** conditions:

This demonstration board (DEMO BOARD) kit being sold or provided by Linear Technology is intended for use for **ENGINEERING DEVELOPMENT OR EVALUATION PURPOSES ONLY** and is not provided by LTC for commercial use. As such, the DEMO BOARD herein may not be complete in terms of required design-, marketing-, and/or manufacturing-related protective considerations, including but not limited to product safety measures typically found in finished commercial goods. As a prototype, this product does not fall within the scope of the European Union directive on electromagnetic compatibility and therefore may or may not meet the technical requirements of the directive, or other regulations.

If this evaluation kit does not meet the specifications recited in the DEMO BOARD manual the kit may be returned within 30 days from the date of delivery for a full refund. THE FOREGOING WARRANTY IS THE EXCLUSIVE WARRANTY MADE BY THE SELLER TO BUYER AND IS IN LIEU OF ALL OTHER WARRANTIES, EXPRESSED, IMPLIED, OR STATUTORY, INCLUDING ANY WARRANTY OF MERCHANTABILITY OR FITNESS FOR ANY PARTICULAR PURPOSE. EXCEPT TO THE EXTENT OF THIS INDEMNITY, NEITHER PARTY SHALL BE LIABLE TO THE OTHER FOR ANY INDIRECT, SPECIAL, INCIDENTAL, OR CONSEQUENTIAL DAMAGES.

The user assumes all responsibility and liability for proper and safe handling of the goods. Further, the user releases LTC from all claims arising from the handling or use of the goods. Due to the open construction of the product, it is the user's responsibility to take any and all appropriate precautions with regard to electrostatic discharge. Also be aware that the products herein may not be regulatory compliant or agency certified (FCC, UL, CE, etc.).

No License is granted under any patent right or other intellectual property whatsoever. **LTC assumes no liability for applications assistance, customer product design, software performance, or infringement of patents or any other intellectual property rights of any kind.**

LTC currently services a variety of customers for products around the world, and therefore this transaction **is not exclusive**.

**Please read the DEMO BOARD manual prior to handling the product.** Persons handling this product must have electronics training and observe good laboratory practice standards. **Common sense is encouraged.**

This notice contains important safety information about temperatures and voltages. For further safety concerns, please contact a LTC application engineer.

Mailing Address:

Linear Technology  
1630 McCarthy Blvd.  
Milpitas, CA 95035

Copyright © 2004, Linear Technology Corporation

dc2161af



Компания «ЭлектроПласт» предлагает заключение долгосрочных отношений при поставках импортных электронных компонентов на взаимовыгодных условиях!

Наши преимущества:

- Оперативные поставки широкого спектра электронных компонентов отечественного и импортного производства напрямую от производителей и с крупнейших мировых складов;
- Поставка более 17-ти миллионов наименований электронных компонентов;
- Поставка сложных, дефицитных, либо снятых с производства позиций;
- Оперативные сроки поставки под заказ (от 5 рабочих дней);
- Экспресс доставка в любую точку России;
- Техническая поддержка проекта, помощь в подборе аналогов, поставка прототипов;
- Система менеджмента качества сертифицирована по Международному стандарту ISO 9001;
- Лицензия ФСБ на осуществление работ с использованием сведений, составляющих государственную тайну;
- Поставка специализированных компонентов (Xilinx, Altera, Analog Devices, Intersil, Interpoint, Microsemi, Aeroflex, Peregrine, Syfer, Eurofarad, Texas Instrument, Miteq, Cobham, E2V, MA-COM, Hittite, Mini-Circuits, General Dynamics и др.);

Помимо этого, одним из направлений компании «ЭлектроПласт» является направление «Источники питания». Мы предлагаем Вам помощь Конструкторского отдела:

- Подбор оптимального решения, техническое обоснование при выборе компонента;
- Подбор аналогов;
- Консультации по применению компонента;
- Поставка образцов и прототипов;
- Техническая поддержка проекта;
- Защита от снятия компонента с производства.



#### Как с нами связаться

**Телефон:** 8 (812) 309 58 32 (многоканальный)

**Факс:** 8 (812) 320-02-42

**Электронная почта:** [org@eplast1.ru](mailto:org@eplast1.ru)

**Адрес:** 198099, г. Санкт-Петербург, ул. Калинина, дом 2, корпус 4, литера А.