

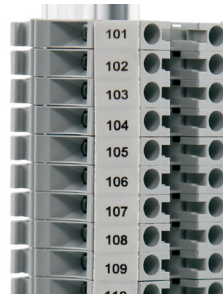
# Terminal Block Markers

# PANDUIT®

SPECIFICATION SHEET

## specifications

Terminal Block Markers are to be continuously molded, flexible polymer material. The elastomeric material shall readily accept continuous thermal transfer print, using the Panduit TDP43ME printer. Product shall be resistant to scratching, smearing, and rubbing. Product shall be able to be installed and removed without the use of hand tools.



## technical information

<b>Material:</b>	Thermoplastic Elastomer (TPE)
<b>Operating temperature:</b>	-40°F to 180°F (-40°C to 82°C)
<b>Flammability:</b>	UL 94-V0
<b>Recommended usage:</b>	Indoor use only
<b>Standards compliance:</b>	Halogen free and RoHS Meets EN 61010-1 (VDE 0411-1) for abrasion and wipe resistance Meets EN ISO 175 for oil and chemical resistance Meets EN 60464-2:2001 for resistance to solvents Meets IEC 60947-7-1/2 for resistance to aging Meets IEC 60068-2-6 for vibration resistance

## key features and benefits

<b>Thermal transfer printable</b>	Faster printing speeds Use single printer for all control panel labels; terminal block markers, heat shrink, self-laminating, raised panel, arc flash labels, voltage markers, and safety labels Print-on-demand using Panduit labeling software Allows use of standard resin ribbon – no need for difficult, messy, or expensive ink cartridges
<b>Provided on a convenient continuous reel</b>	Faster marker installation; install many markers in a single step Less marker waste – print only as many as you need Easy loading in Panduit TDP43ME printer and roll stand
<b>Durability</b>	Flexible markers have superior holding strength in terminal blocks, eliminating markers that fall out Chemical and abrasion resistant Shock and vibration resistant Markers have an easy pull-apart design, and can be easily replaced for any panel changes

## applications

Panduit computer printable terminal block markers are ideally suited for printing markers for terminal block labeling applications within industrial control panels. Panduit terminal block makers are designed from a unique material and with an innovative design that allows them to be printed

on-demand with the TDP43ME, and with a standard resin ribbon. The markers are provided on a continuous reel to allow printing of the precise quantity needed for a job. The continuous design makes printing and installing markers faster as well.

### Terminal Block Markers

<b>5mm x 12mm:</b>	TB05X12EWT-AB1
<b>6mm x 12mm:</b>	TB06X12EWT-AB1
<b>8mm x 12mm:</b>	TB08X12EWT-AB1
<b>5mm x 8mm:</b>	TB05X08EWT-AB2
<b>6mm x 8mm:</b>	TB06X08EWT-AB2

### Easy Mark™ PLUS Labeling Software

<b>CD-ROM:</b>	EMPLUS-CD
<b>Online download:</b>	EMPLUS-DL
<b>USB flash drive:</b>	EMPLUS-2GO
<b>Server based version:</b>	EMPLUS-SERVER

### CAD-Connect Labeling Software

<b>CD-ROM:</b>	PROG-CCCD
----------------	-----------

### Thermal Transfer Desktop Printer

<b>300 dpi:</b>	TDP43ME
<b>External roll stand(required):</b>	TDP43ME-RS

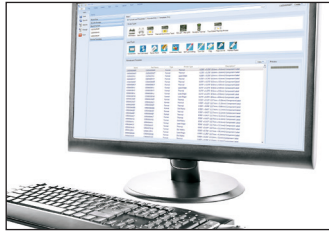
### Recommended Ribbon

<b>TDP43ME black resin 1" wide:</b>	RMER1BL
-------------------------------------	---------

### Other Compatible Ribbons

<b>TDP43ME black resin 2" wide:</b>	RMER2BL
<b>TDP43ME black resin 4" wide:</b>	RMER4BL

# Terminal Block Markers



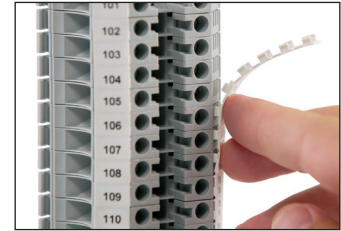
Create and print terminal block markers quickly using Easy-Mark™ Plus Labeling Software.



Continuous reel of markers enables fast printing and aligns easily in printer using snap-in width guides.



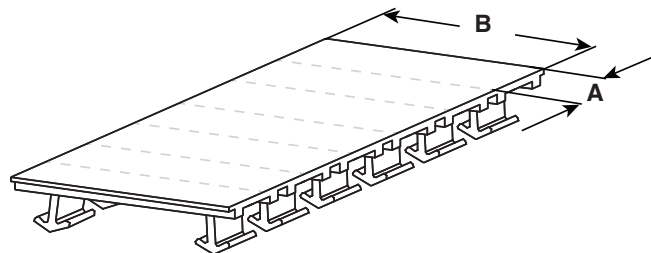
Print terminal block markers using TDP43ME Thermal Transfer Desktop Printer and accessory roll stand.



Durable marker design allows quick and easy installation.

## part information

Part Number	Description	Color	A Width mm	B Height mm	Markers Per Roll	Allen-Bradley Terminal Block Compatibility	Weidmuller Terminal Block Compatibility
TB05X12EWT-AB1	Flexible terminal block markers on continuous rolls	White	5.0	12.0	1000	1492-J3, 1492-W3	WDU 2.5
TB06X12EWT-AB1	Flexible terminal block markers on continuous rolls	White	6.0	12.0	1000	1492-J4, 1492-W4	WDU 4
TB08X12EWT-AB1	Flexible terminal block markers on continuous rolls	White	8.0	12.0	750	1492-J6	WDU 6
TB05X08EWT-AB2	Flexible terminal block markers on continuous rolls	White	5.0	8.0	1000	1492-JD3, 1492-L3	WDR 2.5
TB06X08EWT-AB2	Flexible terminal block markers on continuous rolls	White	6.0	8.0	1000	1492-JD4, 1492-L4	WDR 4



## TDP43ME printer and accessories

Part Number	Description
TDP43ME	300 dpi printer; includes printer, Panduit® Easy-Mark™ Plus Labeling Software, RMEH4BL black hybrid ribbon, AC power adapter with US power cord, USB cable, user manual, quick start card, driver disk, and TDP43ME-TB-KIT terminal block marker adapter kit; for use in North America.
TDP43ME-RS	External label roll stand for TDP43ME printer; used to rear feed labels that are supplied on 3" cores.
TDP43ME-TB-KIT	Terminal block marker adapter kit for TDP43ME printer (included with new TDP43ME printers and available as an optional accessory for older TDP43ME printers).
RMER1BL	Ribbon, resin, 1.1" wide, 300' long, for use with TDP43ME, Black.
EMPLUS-CD	Easy-Mark™ Plus Labeling Software – CD-ROM version.

## Related Products



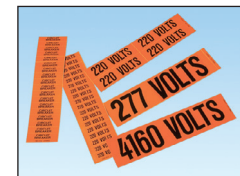
Raised Panel Labels



Wire/Cable Labeling



Safety Signs



Voltage Markers

**DISCLAIMER:** The information contained herein is intended as a guide for use by persons having technical skill at their own discretion and risk. Before using, buyer shall determine the suitability of the Panduit product for his intended use and buyer assumes all risk and liability whatsoever in connection therewith.

### WORLDWIDE SUBSIDIARIES AND SALES OFFICES

PANDUIT US/CANADA  
Phone: 800.777.3300

PANDUIT EUROPE LTD.  
London, UK  
cs-emea@panduit.com  
Phone: 44.20.8601.7200

PANDUIT SINGAPORE PTE. LTD.  
Republic of Singapore  
cs-ap@panduit.com  
Phone: 65.6305.7575

PANDUIT JAPAN  
Tokyo, Japan  
cs-japan@panduit.com  
Phone: 81.3.6863.6000

PANDUIT LATIN AMERICA  
Guadalajara, Mexico  
cs-la@panduit.com  
Phone: 52.33.3777.6000

PANDUIT AUSTRALIA PTY. LTD.  
Victoria, Australia  
cs-usa@panduit.com  
Phone: 61.3.9794.9020

For a copy of Panduit product warranties, log on to [www.panduit.com/warranty](http://www.panduit.com/warranty)

For more information

Visit us at [www.panduit.com](http://www.panduit.com)

Contact Customer Service by email: [cs@panduit.com](mailto:cs@panduit.com)  
or by phone: 800.777.3300

©2017 Panduit Corp.  
ALL RIGHTS RESERVED.  
IDSP27--WW-ENG  
6/2017



Компания «ЭлектроПласт» предлагает заключение долгосрочных отношений при поставках импортных электронных компонентов на взаимовыгодных условиях!

Наши преимущества:

- Оперативные поставки широкого спектра электронных компонентов отечественного и импортного производства напрямую от производителей и с крупнейших мировых складов;
- Поставка более 17-ти миллионов наименований электронных компонентов;
- Поставка сложных, дефицитных, либо снятых с производства позиций;
- Оперативные сроки поставки под заказ (от 5 рабочих дней);
- Экспресс доставка в любую точку России;
- Техническая поддержка проекта, помощь в подборе аналогов, поставка прототипов;
- Система менеджмента качества сертифицирована по Международному стандарту ISO 9001;
- Лицензия ФСБ на осуществление работ с использованием сведений, составляющих государственную тайну;
- Поставка специализированных компонентов (Xilinx, Altera, Analog Devices, Intersil, Interpoint, Microsemi, Aeroflex, Peregrine, Syfer, Eurofarad, Texas Instrument, Miteq, Cobham, E2V, MA-COM, Hittite, Mini-Circuits, General Dynamics и др.);

Помимо этого, одним из направлений компании «ЭлектроПласт» является направление «Источники питания». Мы предлагаем Вам помощь Конструкторского отдела:

- Подбор оптимального решения, техническое обоснование при выборе компонента;
- Подбор аналогов;
- Консультации по применению компонента;
- Поставка образцов и прототипов;
- Техническая поддержка проекта;
- Защита от снятия компонента с производства.



#### Как с нами связаться

**Телефон:** 8 (812) 309 58 32 (многоканальный)

**Факс:** 8 (812) 320-02-42

**Электронная почта:** [org@eplast1.ru](mailto:org@eplast1.ru)

**Адрес:** 198099, г. Санкт-Петербург, ул. Калинина, дом 2, корпус 4, литера А.