

CSCA-A Series

Hall-Effect Based Open-Loop Current Sensors



DESCRIPTION

The CSCA-A Series of open-loop current sensors are based on the principles of the Hall-effect wherein a Hall-effect device (HED) produces an output voltage linearly related to the amplitude and phase of a magnetic field applied to it.

Current flowing through a primary conductor generates a rotating magnetic field around the conductor. This field is collected by a core of magnetically sensitive material and

concentrated in the gap in this core. The HED is located in this core gap. Therefore, the HED output is directly proportional to the amplitude and phase of the primary current.

The HED output is trimmed for gain and offset calibration such that the CSCA-A Series sensor provides a predefined output sensitivity versus primary current.

FEATURES

- Measures ac, dc and impulse currents
- Competitive cost/performance ratio
- Low power consumption
- Compact size
- High level of electrical isolation between primary and secondary circuits
- Large primary aperture
- RoHS compliant
- CE, UL approvals (pending)

POTENTIAL APPLICATIONS

- Variable speed drives
- Ground fault detectors
- Current feedback control systems
- Robotics
- UPS and telecommunication power supplies
- Welding power supplies
- Automotive - Battery management systems
- Watt meters

CSCA-A Series

SPECIFICATIONS (all specifications are at ± 15 Vdc supply and $25\text{ }^{\circ}\text{C}$ [$77\text{ }^{\circ}\text{F}$] ambient temperature unless otherwise specified)

Characteristic	Symbol	Parameter
Nominal current	I_{PN}	See product selection guide
Peak measuring range (ac peak)	I_{PK}	See product selection guide
Nominal output voltage at I_{PN}	V_{SN}	$4\text{ V} \pm 1\%$
Supply voltage	V_{CC}	$\pm 15\text{ Vdc} \pm 5\%$
Supply current	I_{CC}	17 mA typ.
Accuracy at I_{PN} ¹	X	$\leq \pm 2\%$ of I_{PN}
Linearity ²	E_I	$< \pm 1\%$
Zero current offset	V_O	$\leq \pm 20\text{ mV}$
Residual offset after I_{PN}	V_{OR}	$\leq \pm 20\text{ mV}$
Thermal drift of offset	V_{OT}	$\leq \pm 3\text{ mV}/^{\circ}\text{C}$ @ $I_{PN} = 50\text{ A}$ $\leq \pm 1.5\text{ mV}/^{\circ}\text{C}$ @ $I_{PN} = 100\text{ A to } 600\text{ A}$
Thermal drift of gain	V_{ST}	$\leq \pm 4\text{ mV}/^{\circ}\text{C}$
Response time ³	t_R	$3\text{ }\mu\text{s to } 7\text{ }\mu\text{s}$
di/dt accuracy followed	di/dt	$\geq 50\text{ A}/\mu\text{s}$
Bandwidth	f	dc to 50 kHz
Isolation voltage	V_D	3 kV, 50 Hz, 60 sec
Rated insulation voltage	V_I	849 V reinforced
Output resistance	R_S	$\geq 10\text{ k}\Omega$
Ambient operating temperature	T_A	$-10\text{ }^{\circ}\text{C to } 80\text{ }^{\circ}\text{C}$ [$14\text{ }^{\circ}\text{F to } 176\text{ }^{\circ}\text{F}$]
Ambient storage temperature	T_S	$-25\text{ }^{\circ}\text{C to } 85\text{ }^{\circ}\text{C}$ [$-13\text{ }^{\circ}\text{F to } 185\text{ }^{\circ}\text{F}$]

NOTES:

¹ For $I_P > I_{PN}$ then X is the same percentage value but of I_P

² Independent linearity per the Instrument Society of America

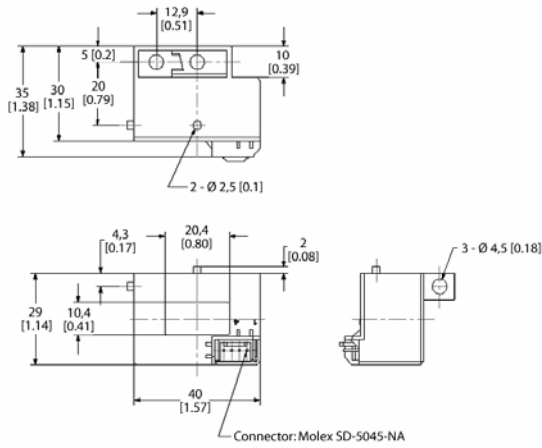
³ At 90% of I_P

⁴ Appropriate specification items defined using the guidance of EN50178

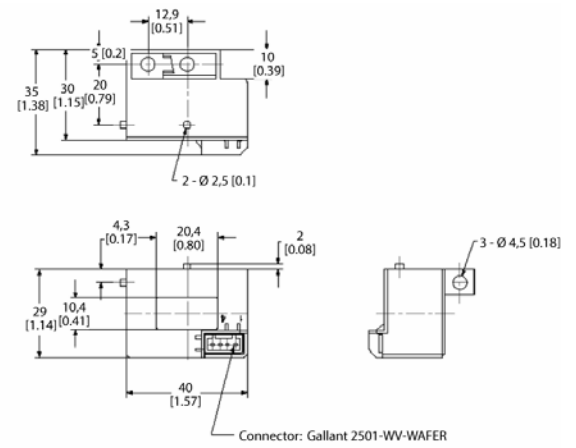
Hall-Effect Based Open Loop Current Sensors

MOUNTING DIMENSIONS (For reference only. mm)

CSCA-A-001



CSCA-A-002



Pins arrangement

1. + 15 V
2. - 15 V
3. Output
4. Ground

Pins arrangement

1. + 15 V
2. - 15 V
3. Output
4. Ground

ORDER GUIDE

Catalog listing	Description
CSCA0050A000B15B01	Hall-effect based, open-loop current sensor, Molex-type connector, 50 A rms nominal, ± 150 A range
CSCA0100A000B15B01	Hall-effect based, open-loop current sensor, Molex-type connector, 100 A rms nominal, ± 300 A range
CSCA0200A000B15B01	Hall-effect based, open-loop current sensor, Molex-type connector, 200 A rms nominal, ± 600 A range
CSCA0300A000B15B01	Hall-effect based, open-loop current sensor, Molex-type connector, 300 A rms nominal, ± 900 A range
CSCA0400A000B15B01	Hall-effect based, open-loop current sensor, Molex-type connector, 400 A rms nominal, ± 900 A range
CSCA0500A000B15B01	Hall-effect based, open-loop current sensor, Molex-type connector, 500 A rms nominal, ± 900 A range
CSCA0600A000B15B01	Hall-effect based, open-loop current sensor, Molex-type connector, 600 A rms nominal, ± 900 A range
CSCA0050A000B15B02	Hall-effect based, open-loop current sensor, Gallant connector, 50 A rms nominal, ± 150 A range
CSCA0100A000B15B02	Hall-effect based, open-loop current sensor, Gallant connector, 100 A rms nominal, ± 300 A range
CSCA0200A000B15B02	Hall-effect based, open-loop current sensor, Gallant connector, 200 A rms nominal, ± 600 A range
CSCA0300A000B15B02	Hall-effect based, open-loop current sensor, Gallant connector, 300 A rms nominal, ± 900 A range
CSCA0400A000B15B02	Hall-effect based, open-loop current sensor, Gallant connector, 400 A rms nominal, ± 900 A range
CSCA0500A000B15B02	Hall-effect based, open-loop current sensor, Gallant connector, 500 A rms nominal, ± 900 A range
CSCA0600A000B15B02	Hall-effect based, open-loop current sensor, Gallant connector, 600 A rms nominal, ± 900 A range

WARNING

PERSONAL INJURY

DO NOT USE these products as safety or emergency stop devices or in any other application where failure of the product could result in personal injury.

Failure to comply with these instructions could result in death or serious injury.

WARNING

MISUSE OF DOCUMENTATION

- The information presented in this product sheet is for reference only. Do not use this document as a product installation guide.
- Complete installation, operation, and maintenance information is provided in the instructions supplied with each product.

Failure to comply with these instructions could result in death or serious injury.

WARRANTY/REMEDY

Honeywell warrants goods of its manufacture as being free of defective materials and faulty workmanship. Honeywell's standard product warranty applies unless agreed to otherwise by Honeywell in writing; please refer to your order acknowledgement or consult your local sales office for specific warranty details. If warranted goods are returned to Honeywell during the period of coverage, Honeywell will repair or replace, at its option, without charge those items it finds defective. **The foregoing is buyer's sole remedy and is in lieu of all other warranties, expressed or implied, including those of merchantability and fitness for a particular purpose. In no event shall Honeywell be liable for consequential, special, or indirect damages.**

While we provide application assistance personally, through our literature and the Honeywell web site, it is up to the customer to determine the suitability of the product in the application.

Specifications may change without notice. The information we supply is believed to be accurate and reliable as of this printing. However, we assume no responsibility for its use.

SALES AND SERVICE

Honeywell serves its customers through a worldwide network of sales offices, representatives and distributors. For application assistance, current specifications, pricing or name of the nearest Authorized Distributor, contact your local sales office or:

E-mail: info.sc@honeywell.com

Internet: www.honeywell.com/sensing

Phone and Fax:

Asia Pacific +65 6355-2828
+65 6445-3033 Fax
Europe +44 (0) 1698 481481
+44 (0) 1698 481676 Fax
Latin America +1-305-805-8188
+1-305-883-8257 Fax
USA/Canada +1-800-537-6945
+1-815-235-6847
+1-815-235-6545 Fax

Sensing and Control

Honeywell

1985 Douglas Drive North

Golden Valley, Minnesota 55422

www.honeywell.com/sensing

005872-1-EN IL50 GLO Printed in USA
February 2007

Copyright © 2007 Honeywell International Inc. All rights reserved.

Honeywell



Компания «ЭлектроПласт» предлагает заключение долгосрочных отношений при поставках импортных электронных компонентов на взаимовыгодных условиях!

Наши преимущества:

- Оперативные поставки широкого спектра электронных компонентов отечественного и импортного производства напрямую от производителей и с крупнейших мировых складов;
- Поставка более 17-ти миллионов наименований электронных компонентов;
- Поставка сложных, дефицитных, либо снятых с производства позиций;
- Оперативные сроки поставки под заказ (от 5 рабочих дней);
- Экспресс доставка в любую точку России;
- Техническая поддержка проекта, помощь в подборе аналогов, поставка прототипов;
- Система менеджмента качества сертифицирована по Международному стандарту ISO 9001;
- Лицензия ФСБ на осуществление работ с использованием сведений, составляющих государственную тайну;
- Поставка специализированных компонентов (Xilinx, Altera, Analog Devices, Intersil, Interpoint, Microsemi, Aeroflex, Peregrine, Syfer, Eurofarad, Texas Instrument, Miteq, Cobham, E2V, MA-COM, Hittite, Mini-Circuits, General Dynamics и др.);

Помимо этого, одним из направлений компании «ЭлектроПласт» является направление «Источники питания». Мы предлагаем Вам помощь Конструкторского отдела:

- Подбор оптимального решения, техническое обоснование при выборе компонента;
- Подбор аналогов;
- Консультации по применению компонента;
- Поставка образцов и прототипов;
- Техническая поддержка проекта;
- Защита от снятия компонента с производства.



Как с нами связаться

Телефон: 8 (812) 309 58 32 (многоканальный)

Факс: 8 (812) 320-02-42

Электронная почта: org@eplast1.ru

Адрес: 198099, г. Санкт-Петербург, ул. Калинина, дом 2, корпус 4, литера А.