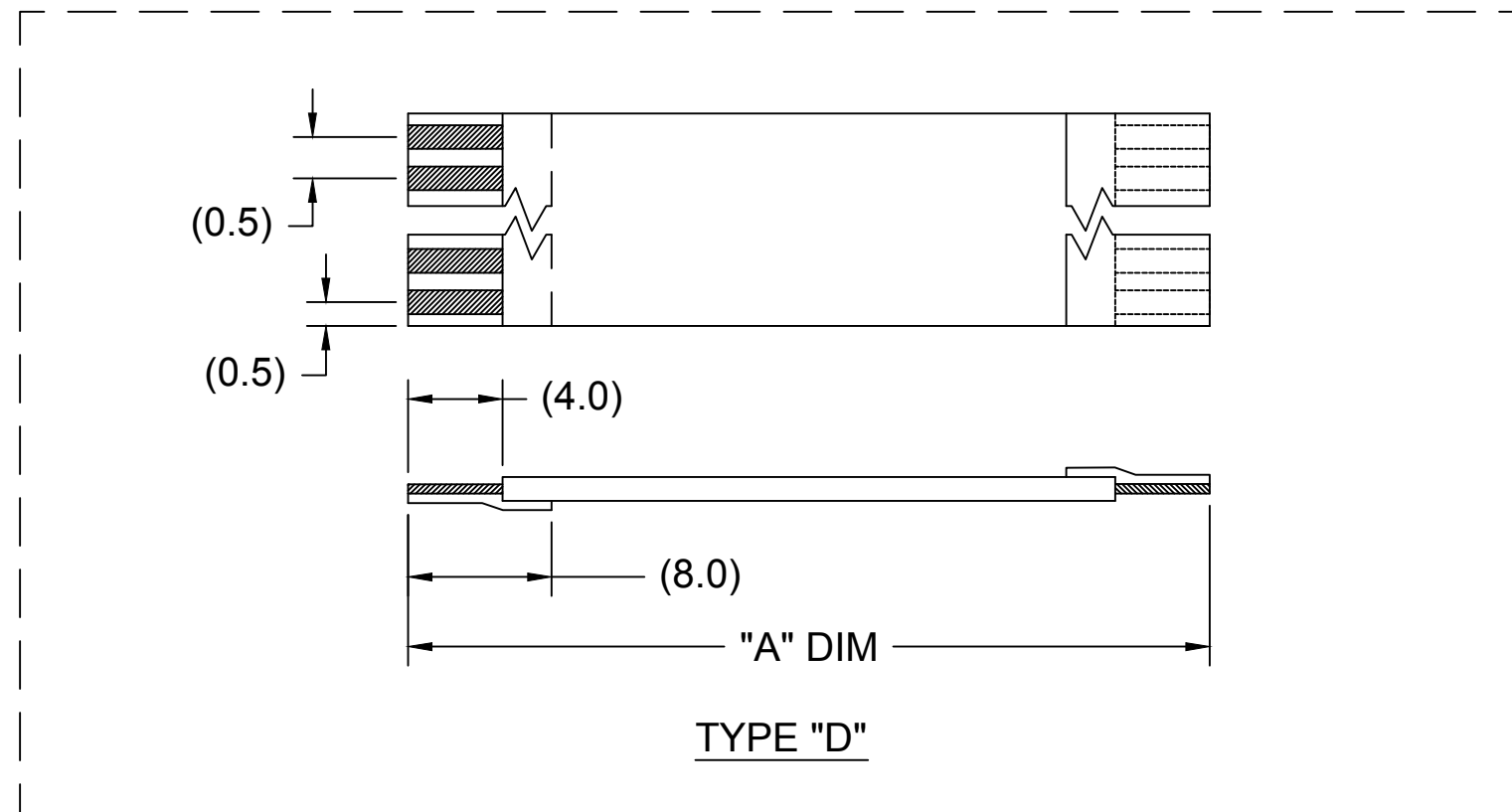
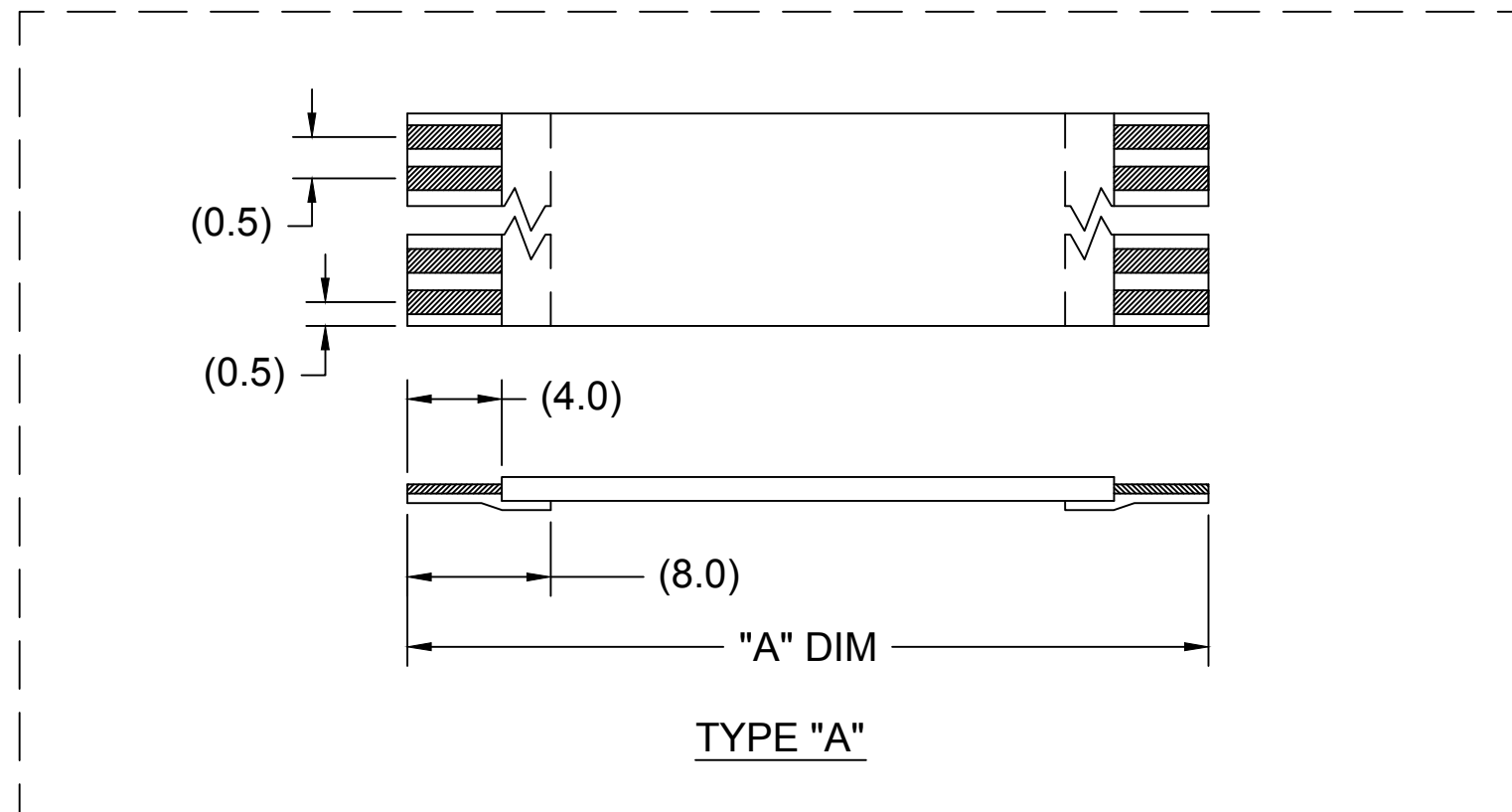


0.50MM CENTER FFC JUMPER CABLE (HIGH TEMPERATURE) CHART

| "A" DIM. | 1.18 ± .079 INCHES 30 ± 2.00 | | 2 ± .079 INCHES 51 ± 2.00 MM | | 3 ± .118 INCHES 76 ± 3.00 MM | | 4 ± .118 INCHES 102 ± 3.00 MM | | 5 ± .157 INCHES 127 ± 4.00 MM | | 6 ± .157 INCHES 152 ± 4.00 MM | | 7 ± .157 INCHES 178 ± 4.00 MM | | 8 ± .157 INCHES 203 ± 4.00 MM | | 9 ± .197 INCHES 229 ± 5.00 MM | | 10 ± .197 INCHES 254 ± 5.00 MM | | 12 ± .197 INCHES 305 ± 5.00 MM | |
|----------|---------------------------------|-----------|---------------------------------|-----------|---------------------------------|-----------|----------------------------------|-----------|----------------------------------|-----------|----------------------------------|-----------|----------------------------------|-----------|----------------------------------|-----------|----------------------------------|-----------|-----------------------------------|-----------|-----------------------------------|-----------|
| | STIFFENER | TYPE "A" | TYPE "D" | TYPE "A" | TYPE "D" | TYPE "A" | TYPE "D" | TYPE "A" | TYPE "D" | TYPE "A" | TYPE "D" | TYPE "A" | TYPE "D" | TYPE "A" | TYPE "D" | TYPE "A" | TYPE "D" | TYPE "A" | TYPE "D" | TYPE "A" | TYPE "D" | TYPE "A" |
| CKTS: 6 | 152660051 | 152660052 | 152660053 | 152660054 | 152660055 | 152660056 | 152660057 | 152660058 | 152660059 | 152660060 | 152660061 | 152660062 | 152660063 | 152660064 | 152660065 | 152660066 | 152660067 | 152660068 | 152660069 | 152660070 | 152660071 | 152660072 |
| CKTS: 8 | 152660073 | 152660074 | 152660075 | 152660076 | 152660077 | 152660078 | 152660079 | 152660080 | 152660081 | 152660082 | 152660083 | 152660084 | 152660085 | 152660086 | 152660087 | 152660088 | 152660089 | 152660090 | 152660091 | 152660092 | 152660093 | 152660094 |
| CKTS: 10 | 152660095 | 152660096 | 152660097 | 152660098 | 152660099 | 152660100 | 152660101 | 152660102 | 152660103 | 152660104 | 152660105 | 152660106 | 152660107 | 152660108 | 152660109 | 152660110 | 152660111 | 152660112 | 152660113 | 152660114 | 152660115 | 152660116 |
| CKTS: 12 | 152660117 | 152660118 | 152660119 | 152660120 | 152660121 | 152660122 | 152660123 | 152660124 | 152660125 | 152660126 | 152660127 | 152660128 | 152660129 | 152660130 | 152660131 | 152660132 | 152660133 | 152660134 | 152660135 | 152660136 | 152660137 | 152660138 |
| CKTS: 14 | 152660139 | 152660140 | 152660141 | 152660142 | 152660143 | 152660144 | 152660145 | 152660146 | 152660147 | 152660148 | 152660149 | 152660150 | 152660151 | 152660152 | 152660153 | 152660154 | 152660155 | 152660156 | 152660157 | 152660158 | 152660159 | 152660160 |
| CKTS: 16 | 152660161 | 152660162 | 152660163 | 152660164 | 152660165 | 152660166 | 152660167 | 152660168 | 152660169 | 152660170 | 152660171 | 152660172 | 152660173 | 152660174 | 152660175 | 152660176 | 152660177 | 152660178 | 152660179 | 152660180 | 152660181 | 152660182 |
| CKTS: 18 | 152660183 | 152660184 | 152660185 | 152660186 | 152660187 | 152660188 | 152660189 | 152660190 | 152660191 | 152660192 | 152660193 | 152660194 | 152660195 | 152660196 | 152660197 | 152660198 | 152660199 | 152660200 | 152660201 | 152660202 | 152660203 | 152660204 |
| CKTS: 20 | 152660205 | 152660206 | 152660207 | 152660208 | 152660209 | 152660210 | 152660211 | 152660212 | 152660213 | 152660214 | 152660215 | 152660216 | 152660217 | 152660218 | 152660219 | 152660220 | 152660221 | 152660222 | 152660223 | 152660224 | 152660225 | 152660226 |
| CKTS: 22 | 152660227 | 152660228 | 152660229 | 152660230 | 152660231 | 152660232 | 152660233 | 152660234 | 152660235 | 152660236 | 152660237 | 152660238 | 152660239 | 152660240 | 152660241 | 152660242 | 152660243 | 152660244 | 152660245 | 152660246 | 152660247 | 152660248 |
| CKTS: 24 | 152660249 | 152660250 | 152660251 | 152660252 | 152660253 | 152660254 | 152660255 | 152660256 | 152660257 | 152660258 | 152660259 | 152660260 | 152660261 | 152660262 | 152660263 | 152660264 | 152660265 | 152660266 | 152660267 | 152660268 | 152660269 | 152660270 |
| CKTS: 26 | 152660271 | 152660272 | 152660273 | 152660274 | 152660275 | 152660276 | 152660277 | 152660278 | 152660279 | 152660280 | 152660281 | 152660282 | 152660283 | 152660284 | 152660285 | 152660286 | 152660287 | 152660288 | 152660289 | 152660290 | 152660291 | 152660292 |
| CKTS: 28 | 152660293 | 152660294 | 152660295 | 152660296 | 152660297 | 152660298 | 152660299 | 152660300 | 152660301 | 152660302 | 152660303 | 152660304 | 152660305 | 152660306 | 152660307 | 152660308 | 152660309 | 152660310 | 152660311 | 152660312 | 152660313 | 152660314 |
| CKTS: 30 | 152660315 | 152660316 | 152660317 | 152660318 | 152660319 | 152660320 | 152660321 | 152660322 | 152660323 | 152660324 | 152660325 | 152660326 | 152660327 | 152660328 | 152660329 | 152660330 | 152660331 | 152660332 | 152660333 | 152660334 | 152660335 | 152660336 |
| CKTS: 32 | 152660337 | 152660338 | 152660339 | 152660340 | 152660341 | 152660342 | 152660343 | 152660344 | 152660345 | 152660346 | 152660347 | 152660348 | 152660349 | 152660350 | 152660351 | 152660352 | 152660353 | 152660354 | 152660355 | 152660356 | 152660357 | 152660358 |
| CKTS: 34 | 152660359 | 152660360 | 152660361 | 152660362 | 152660363 | 152660364 | 152660365 | 152660366 | 152660367 | 152660368 | 152660369 | 152660370 | 152660371 | 152660372 | 152660373 | 152660374 | 152660375 | 152660376 | 152660377 | 152660378 | 152660379 | 152660380 |
| CKTS: 36 | 152660381 | 152660382 | 152660383 | 152660384 | 152660385 | 152660386 | 152660387 | 152660388 | 152660389 | 152660390 | 152660391 | 152660392 | 152660393 | 152660394 | 152660395 | 152660396 | 152660397 | 152660398 | 152660399 | 152660400 | 152660401 | 152660402 |
| CKTS: 38 | 152660403 | 152660404 | 152660405 | 152660406 | 152660407 | 152660408 | 152660409 | 152660410 | 152660411 | 152660412 | 152660413 | 152660414 | 152660415 | 152660416 | 152660417 | 152660418 | 152660419 | 152660420 | 152660421 | 152660422 | 152660423 | 152660424 |
| CKTS: 40 | 152660425 | 152660426 | 152660427 | 152660428 | 152660429 | 152660430 | 152660431 | 152660432 | 152660433 | 152660434 | 152660435 | 152660436 | 152660437 | 152660438 | 152660439 | 152660440 | 152660441 | 152660442 | 152660443 | 152660444 | 152660445 | 152660446 |
| CKTS: 42 | 152660447 | 152660448 | 152660449 | 152660450 | 152660451 | 152660452 | 152660453 | 152660454 | 152660455 | 152660456 | 152660457 | 152660458 | 152660459 | 152660460 | 152660461 | 152660462 | 152660463 | 152660464 | 152660465 | 152660466 | 152660467 | 152660468 |
| CKTS: 44 | 152660469 | 152660470 | 152660471 | 152660472 | 152660473 | 152660474 | 152660475 | 152660476 | 152660477 | 152660478 | 152660479 | 152660480 | 152660481 | 152660482 | 152660483 | 152660484 | 152660485 | 152660486 | 152660487 | 152660488 | 152660489 | 152660490 |
| CKTS: 46 | 152660491 | 152660492 | 152660493 | 152660494 | 152660495 | 152660496 | 152660497 | 152660498 | 152660499 | 152660500 | 152660501 | 152660502 | 152660503 | 152660504 | 152660505 | 152660506 | 152660507 | 152660508 | 152660509 | 152660510 | 152660511 | 152660512 |
| CKTS: 48 | 152660513 | 152660514 | 152660515 | 152660516 | 152660517 | 152660518 | 152660519 | 152660520 | 152660521 | 152660522 | 152660523 | 152660524 | 152660525 | 152660526 | 152660527 | 152660528 | 152660529 | 152660530 | 152660531 | 152660532 | 152660533 | 152660534 |
| CKTS: 50 | 152660535 | 152660536 | 152660537 | 152660538 | 152660539 | 152660540 | 152660541 | 152660542 | 152660543 | 152660544 | 152660545 | 152660546 | 152660547 | 152660548 | 152660549 | 152660550 | 152660551 | 152660552 | 152660553 | 152660554 | 152660555 | 152660556 |

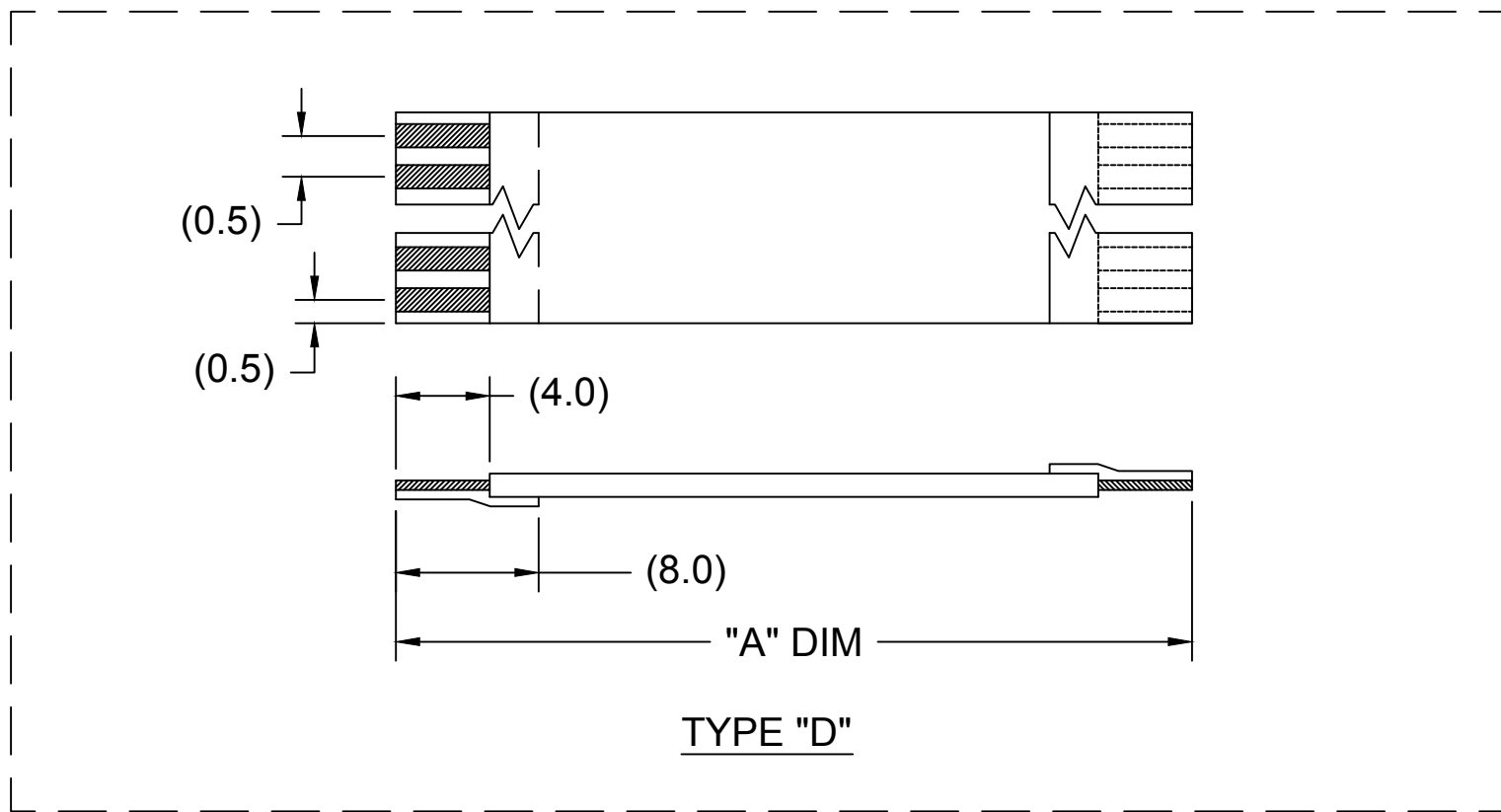
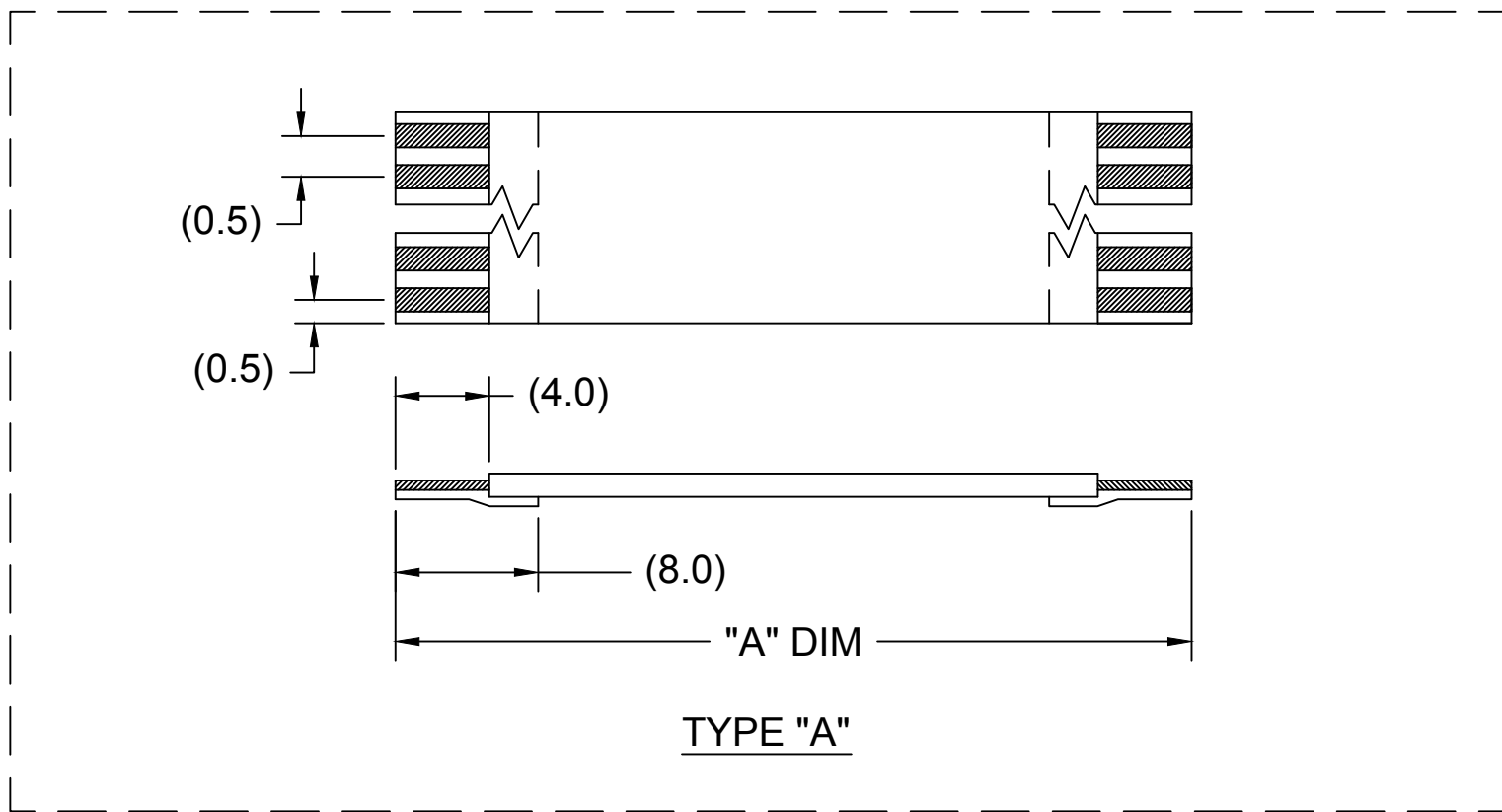


NOTES:
1. NO PRINTING ON JUMPER CABLE UNLESS OTHERWISE SPECIFIED. IF PRINTING IS REQUIRED, THEN IT WOULD BE CONSIDERED A SPECIAL JUMPER CABLE.

| | | | | | | | | | | | | | |
|----------|---|---------------------------|----------------|-----------|--|---|-----------------|--------------------|--------------|--------------|------------------------|------|--|
| RELEASED | EC NO.: USW2011-0065 DRWN: JLW REV: 1 | DESCRIPTION 2010/09/30 | QUALITY SYMBOL | | GENERAL TOLERANCES (UNLESS SPECIFIED) | | DIMENSION STYLE | | SCALE | DESIGN UNITS | THIRD ANGLE PROJECTION | | |
| | | | ▼=0 | ∇=0 | mm | INCH | MM | METRIC | | | | | |
| | | | 4 PLACES ±--- | | 3 PLACES ±--- | | 2 PLACES ±--- | | 1 PLACE ±--- | | DRAWN BY | DATE | TITLE 0.50MM CENTER FFC JUMPER CABLE |
| | | | ANGULAR ±1/2° | | DRAFT WHERE APPLICABLE MUST REMAIN WITHIN DIMENSIONS | | APPROVED BY | | DATE | | MATERIAL NO. | | |
| | | | | SEE CHART | | DRASSMUSS 2010/11/17 | | MOLEX INCORPORATED | | SHEET NO. | | | |
| | | | | C | | THIS DRAWING CONTAINS INFORMATION THAT IS PROPRIETARY TO MOLEX INCORPORATED AND SHOULD NOT BE USED WITHOUT WRITTEN PERMISSION | | DOCUMENT NO. | | 1 OF 2 | | | |

0.50MM CENTER FFC JUMPER CABLE (HIGH TEMPERATURE) CHART

| "A" DIM. | 1.18 ± .079 INCHES 30 ± 2.00 | | 2 ± .079 INCHES 51 ± 2.00 MM | | 3 ± .118 INCHES 76 ± 3.00 MM | | 4 ± .118 INCHES 102 ± 3.00 MM | | 5 ± .157 INCHES 127 ± 4.00 MM | | 6 ± .157 INCHES 152 ± 4.00 MM | | 7 ± .157 INCHES 178 ± 4.00 MM | | 8 ± .157 INCHES 203 ± 4.00 MM | | 9 ± .197 INCHES 229 ± 5.00 MM | | 10 ± .197 INCHES 254 ± 5.00 MM | | 12 ± .197 INCHES 305 ± 5.00 MM | |
|-----------|---------------------------------|-----------|---------------------------------|-----------|---------------------------------|-----------|----------------------------------|-----------|----------------------------------|-----------|----------------------------------|-----------|----------------------------------|-----------|----------------------------------|-----------|----------------------------------|-----------|-----------------------------------|-----------|-----------------------------------|-----------|
| STIFFENER | TYPE "A" | TYPE "D" | TYPE "A" | TYPE "D" | TYPE "A" | TYPE "D" | TYPE "A" | TYPE "D" | TYPE "A" | TYPE "D" | TYPE "A" | TYPE "D" | TYPE "A" | TYPE "D" | TYPE "A" | TYPE "D" | TYPE "A" | TYPE "D" | TYPE "A" | TYPE "D" | TYPE "A" | TYPE "D" |
| CKTS: 7 | 152660745 | 152660744 | 152660747 | 152660746 | 152660749 | 152660748 | 152660751 | 152660750 | 152660753 | 152660752 | 152660755 | 152660754 | 152660757 | 152660756 | 152660759 | 152660758 | 152660761 | 152660760 | 152660763 | 152660762 | 152660765 | 152660764 |
| CKTS: 9 | 152660767 | 152660766 | 152660769 | 152660768 | 152660771 | 152660770 | 152660773 | 152660772 | 152660775 | 152660774 | 152660777 | 152660776 | 152660779 | 152660778 | 152660781 | 152660780 | 152660783 | 152660782 | 152660785 | 152660784 | 152660787 | 152660786 |
| CKTS: 11 | 152660789 | 152660788 | 152660791 | 152660790 | 152660793 | 152660792 | 152660795 | 152660794 | 152660797 | 152660796 | 152660799 | 152660798 | 152660801 | 152660800 | 152660803 | 152660802 | 152660805 | 152660804 | 152660807 | 152660806 | 152660809 | 152660808 |
| CKTS: 13 | 152660811 | 152660810 | 152660813 | 152660812 | 152660815 | 152660814 | 152660817 | 152660816 | 152660819 | 152660818 | 152660821 | 152660820 | 152660823 | 152660822 | 152660825 | 152660824 | 152660827 | 152660826 | 152660829 | 152660828 | 152660831 | 152660830 |
| CKTS: 15 | 152660833 | 152660832 | 152660835 | 152660834 | 152660837 | 152660836 | 152660839 | 152660838 | 152660841 | 152660840 | 152660843 | 152660842 | 152660845 | 152660844 | 152660847 | 152660846 | 152660849 | 152660848 | 152660851 | 152660850 | 152660853 | 152660852 |
| CKTS: 17 | 152660855 | 152660854 | 152660857 | 152660856 | 152660859 | 152660858 | 152660861 | 152660860 | 152660863 | 152660862 | 152660865 | 152660864 | 152660867 | 152660866 | 152660869 | 152660868 | 152660871 | 152660870 | 152660873 | 152660872 | 152660875 | 152660874 |
| CKTS: 19 | 152660877 | 152660876 | 152660879 | 152660878 | 152660881 | 152660880 | 152660883 | 152660882 | 152660885 | 152660884 | 152660887 | 152660886 | 152660889 | 152660888 | 152660891 | 152660890 | 152660893 | 152660892 | 152660895 | 152660894 | 152660897 | 152660896 |
| CKTS: 21 | 152660899 | 152660898 | 152660901 | 152660900 | 152660903 | 152660902 | 152660905 | 152660904 | 152660907 | 152660906 | 152660909 | 152660908 | 152660911 | 152660910 | 152660913 | 152660912 | 152660915 | 152660914 | 152660917 | 152660916 | 152660919 | 152660918 |
| CKTS: 23 | 152660921 | 152660920 | 152660923 | 152660922 | 152660925 | 152660924 | 152660927 | 152660926 | 152660929 | 152660928 | 152660931 | 152660930 | 152660933 | 152660932 | 152660935 | 152660934 | 152660937 | 152660936 | 152660939 | 152660938 | 152660941 | 152660940 |
| CKTS: 25 | 152660943 | 152660942 | 152660945 | 152660944 | 152660947 | 152660946 | 152660949 | 152660948 | 152660951 | 152660950 | 152660953 | 152660952 | 152660955 | 152660954 | 152660957 | 152660956 | 152660959 | 152660958 | 152660961 | 152660960 | 152660963 | 152660962 |
| CKTS: 27 | 152660965 | 152660964 | 152660967 | 152660966 | 152660969 | 152660968 | 152660971 | 152660970 | 152660973 | 152660972 | 152660975 | 152660974 | 152660977 | 152660976 | 152660979 | 152660978 | 152660981 | 152660980 | 152660983 | 152660982 | 152660985 | 152660984 |
| CKTS: 29 | 152660987 | 152660986 | 152660989 | 152660988 | 152660991 | 152660990 | 152660993 | 152660992 | 152660995 | 152660994 | 152660997 | 152660996 | 152660999 | 152660998 | 152661001 | 152661000 | 152661003 | 152661002 | 152661005 | 152661004 | 152661007 | 152661006 |
| CKTS: 31 | 152661009 | 152661008 | 152661011 | 152661010 | 152661013 | 152661012 | 152661015 | 152661014 | 152661017 | 152661016 | 152661019 | 152661018 | 152661021 | 152661020 | 152661023 | 152661022 | 152661025 | 152661024 | 152661027 | 152661026 | 152661029 | 152661028 |
| CKTS: 33 | 152661031 | 152661030 | 152661033 | 152661032 | 152661035 | 152661034 | 152661037 | 152661036 | 152661039 | 152661038 | 152661041 | 152661040 | 152661043 | 152661042 | 152661045 | 152661044 | 152661047 | 152661046 | 152661049 | 152661048 | 152661051 | 152661050 |
| CKTS: 35 | 152661053 | 152661052 | 152661055 | 152661054 | 152661057 | 152661056 | 152661059 | 152661058 | 152661061 | 152661060 | 152661063 | 152661062 | 152661065 | 152661064 | 152661067 | 152661066 | 152661069 | 152661068 | 152661071 | 152661070 | 152661073 | 152661072 |
| CKTS: 37 | 152661075 | 152661074 | 152661077 | 152661076 | 152661079 | 152661078 | 152661081 | 152661080 | 982331083 | 152661082 | 152661085 | 152661084 | 152661087 | 152661086 | 152661089 | 152661088 | 152661091 | 152661090 | 152661093 | 152661092 | 152661095 | 152661094 |
| CKTS: 39 | 152661097 | 152661096 | 152661099 | 152661098 | 152661101 | 152661100 | 152661103 | 152661102 | 152661105 | 152661104 | 152661107 | 152661106 | 152661109 | 152661108 | 152661111 | 152661110 | 152661113 | 152661112 | 152661115 | 152661114 | 152661117 | 152661116 |
| CKTS: 41 | 152661119 | 152661118 | 152661121 | 152661120 | 152661123 | 152661122 | 152661125 | 152661124 | 152661127 | 152661126 | 152661129 | 152661128 | 152661131 | 152661130 | 152661133 | 152661132 | 152661135 | 152661134 | 152661137 | 152661136 | 152661139 | 152661138 |
| CKTS: 43 | 152661141 | 152661140 | 152661143 | 152661142 | 152661145 | 152661144 | 152661147 | 152661146 | 152661149 | 152661148 | 152661151 | 152661150 | 152661153 | 152661152 | 152661155 | 152661154 | 152661157 | 152661156 | 152661159 | 152661158 | 152661161 | 152661160 |
| CKTS: 45 | 152661163 | 152661162 | 152661165 | 152661164 | 152661167 | 152661166 | 152661169 | 152661168 | 152661171 | 152661170 | 152661173 | 152661172 | 152661175 | 152661174 | 152661177 | 152661176 | 152661179 | 152661178 | 152661181 | 152661180 | 152661183 | 152661182 |
| CKTS: 47 | 152661185 | 152661184 | 152661187 | 152661186 | 152661189 | 152661188 | 152661191 | 152661190 | 152661193 | 152661192 | 152661195 | 152661194 | 152661197 | 152661196 | 152661199 | 152661198 | 152661201 | 152661200 | 152661203 | 152661202 | 152661205 | 152661204 |
| CKTS: 49 | 152661207 | 152661206 | 152661209 | 152661208 | 152661211 | 152661210 | 152661213 | 152661212 | 152661215 | 152661214 | 152661217 | 152661216 | 152661219 | 152661218 | 152661221 | 152661220 | 152661223 | 152661222 | 152661225 | 152661224 | 152661227 | 152661226 |



NOTES:

1. NO PRINTING ON JUMPER CABLE UNLESS OTHERWISE SPECIFIED. IF PRINTING IS REQUIRED, THEN IT WOULD BE CONSIDERED A SPECIAL JUMPER CABLE.

| | | | | | | | | | | |
|----------------------|-------------|--|---|--------------|-----------------|--------------|--------------------------------|--------------|------------------------|--|
| SEE SHEET 1 | DESCRIPTION | QUALITY SYMBOL ▽=0 C=0 | GENERAL TOLERANCES (UNLESS SPECIFIED) | | DIMENSION STYLE | | SCALE | DESIGN UNITS | THIRD ANGLE PROJECTION | |
| | | | mm | INCH | MM | --- | METRIC | | | |
| EC NO: DRWN: 1 | REV | 4 PLACES | ±--- | ±--- | DRAWN BY | DATE | TITLE | | | |
| | | 3 PLACES | ±--- | ±--- | CHECKED BY | DATE | 0.50MM CENTER FFC JUMPER CABLE | | | |
| | | 2 PLACES | ±--- | ±--- | APPROVED BY | DATE | MOLEX INCORPORATED | | | |
| | | 1 PLACE | ±--- | ±--- | DRASMUSS | 2010/11/17 | MOLEX INCORPORATED | | | |
| | | ANGULAR ±1/2° | | MATERIAL NO. | | DOCUMENT NO. | | SHEET NO. | | |
| | | DRAFT WHERE APPLICABLE MUST REMAIN WITHIN DIMENSIONS | | SEE CHART | | SD-15266-001 | | 2 OF 2 | | |
| | | SIZE C | THIS DRAWING CONTAINS INFORMATION THAT IS PROPRIETARY TO MOLEX INCORPORATED AND SHOULD NOT BE USED WITHOUT WRITTEN PERMISSION | | | | | | | |



Компания «ЭлектроПласт» предлагает заключение долгосрочных отношений при поставках импортных электронных компонентов на взаимовыгодных условиях!

Наши преимущества:

- Оперативные поставки широкого спектра электронных компонентов отечественного и импортного производства напрямую от производителей и с крупнейших мировых складов;
- Поставка более 17-ти миллионов наименований электронных компонентов;
- Поставка сложных, дефицитных, либо снятых с производства позиций;
- Оперативные сроки поставки под заказ (от 5 рабочих дней);
- Экспресс доставка в любую точку России;
- Техническая поддержка проекта, помощь в подборе аналогов, поставка прототипов;
- Система менеджмента качества сертифицирована по Международному стандарту ISO 9001;
- Лицензия ФСБ на осуществление работ с использованием сведений, составляющих государственную тайну;
- Поставка специализированных компонентов (Xilinx, Altera, Analog Devices, Intersil, Interpoint, Microsemi, Aeroflex, Peregrine, Syfer, Eurofarad, Texas Instrument, Miteq, Cobham, E2V, MA-COM, Hittite, Mini-Circuits, General Dynamics и др.);

Помимо этого, одним из направлений компании «ЭлектроПласт» является направление «Источники питания». Мы предлагаем Вам помощь Конструкторского отдела:

- Подбор оптимального решения, техническое обоснование при выборе компонента;
- Подбор аналогов;
- Консультации по применению компонента;
- Поставка образцов и прототипов;
- Техническая поддержка проекта;
- Защита от снятия компонента с производства.



Как с нами связаться

Телефон: 8 (812) 309 58 32 (многоканальный)

Факс: 8 (812) 320-02-42

Электронная почта: org@eplast1.ru

Адрес: 198099, г. Санкт-Петербург, ул. Калинина, дом 2, корпус 4, литера А.