

Accessories Multimode Relay MT

- Snap-on mounting on DIN-rail
- Screw mounting
- Pozidrive screws with rising clamp terminals
- Logical layout of input-/output connections
- White marking area
- Din-rail sockets and accessories: RoHS compliant (Directive 2002/95/EC)



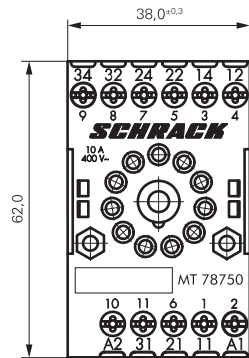
F0235-B

MT DIN-rail sockets with screw-type terminals

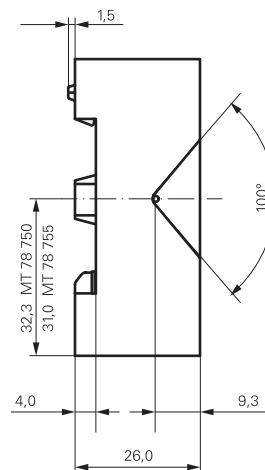
MT 78 750 MT3 DIN-rail socket with screw-type terminals, 11-pin
MT 78 755 MT2 DIN rail socket with screw type terminals, 8-pin



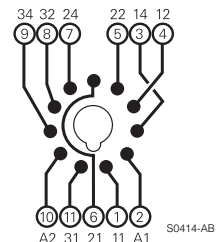
F0103-B



S0311-BA

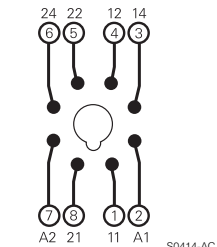


MT 78 750



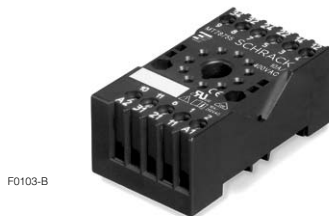
S0414-AB

MT 78 755

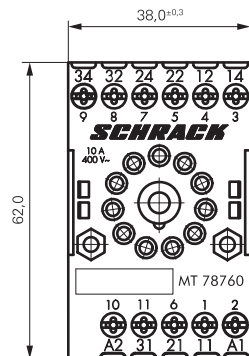


S0414-AC

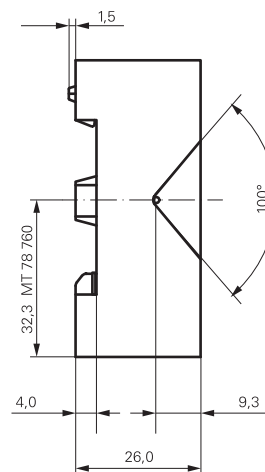
MT 78 760 MT3 DIN-rail socket with screw-type terminals, 11-pin



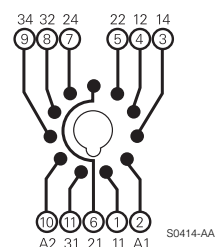
F0103-B



S0311-BB



MT 78 760



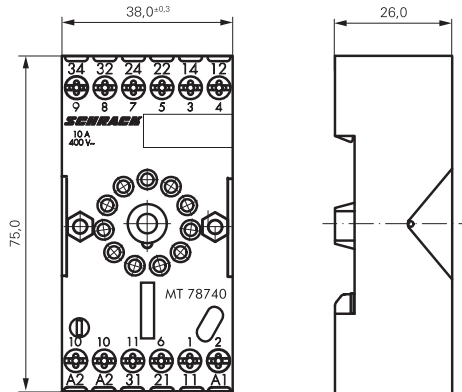
S0414-AA

Accessories Multimode Relay MT (Continued)

MT 78 740 MT3 DIN-rail socket with screw-type terminals, 11-pin
MT 78 745 MT2 DIN rail socket with screw type terminals, 8-pin



F0200-B



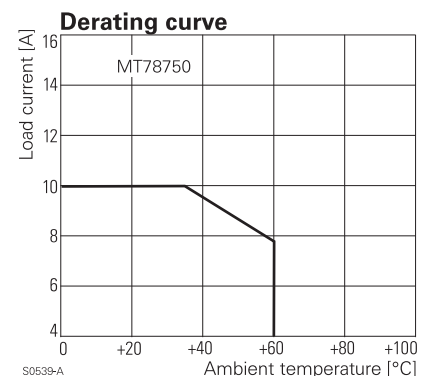
Socket system MT 78 740 and MT 78 745
 ■ 8/11 pin socket for MT2 / MT3
 ■ Double A2 screw for simple further connection of coil supply

S0366-A

Approvals

VDE REG.-Nr. 6182, cULus E135149

Technical data		MT 78 750/755/760/740/745
Rated voltage / max. switching voltage AC		240 / 400 VAC
Rated current		10 A
Dielectric strength coil-contact circuit	open contact circuit	2500 V _{rms}
	adjacent contact circuits	1500 V _{rms}
		2500 V _{rms}
Clearance / creepage coil-contact circuit		≥ 2.8/4 mm
Material group of insulation parts		IIIa
Insulation to IEC 60664-1		
Type of insulation coil-contact circuit		basic
open contact circuit		functional
adjacent contact circuits		basic
Rated insulation voltage		250 V
Pollution degree		2
Rated voltage system		230 / 400 V
Overvoltage category		III
RoHS - Directive 2002/95/EC		
DIN-rail sockets and retainers:		compliant
Ambient temperature range		-20...+80°C
Terminals		screw
Terminal screw torque acc. IEC 61984		0.5 Nm
max.		0.7 Nm
Wire cross section		
single wire		2 x 2.5 mm ²
fine wire		2 x 2.5 mm ²
with bootlace crimp (DIN 46228/1)		2 x 1.5 mm ²
Insertion cycles		A (10)
Max. Insertion Force total		100 N
Mounting distance		≥ 0, dense packing
Weight		
MT 78 750/760		54 g
MT 78 755		47 g
MT 78 740		62 g
MT 78 745		56 g
Packaging unit		25 pcs



S0539-A

DIN-rail sockets with screw-type terminals

Type		Part Number
MT 78 750	DIN-rail socket with screw-type terminals 11-pin	1415035-1
MT 78 755	DIN-rail socket with screw-type terminals 8-pin	3-1415035-1
MT 78 760	DIN-rail socket with screw-type terminals 11-pin	8-1415034-1
MT78 740	DIN-rail socket with screw-type terminals, 11-pin	8-1393163-3
MT78 745	DIN-rail socket with screw-type terminals, 8-pin	8-1393163-4

Accessories Multimode Relay MT (Continued)

Accessories for MT 78 750, MT 78 755, MT 78 760, MT 78 740, MT 78 745

Type	Part Number
MT 28 800 Metal retaining clip MT	8-1393163-0

LED and Protection modules for MT 78 740, MT 78 745

Type	Part Number
MTM TO 0A0 Protection diode 1N4007 (A1+, A2-)	7-1393163-6
MTM U0 730 RC-network 110...230 VAC	7-1393163-8

LED	
MTM L0 024 red LED 24 VAC / VDC	7-1393163-4

Function modules for MT 78 740, MT 78 745

Type	Part Number
MTM Z0 W00 Delay ON	7-1393163-9
MTM F0 W00 Multifunction	7-1393163-3

Technical data - Function modules

Nominal voltage	24...240 VDC / VAC
Mains frequency	48...63 Hz
Precision of time setting	+ 0,5 %
Readiness for repetition	≤ 0,5 % or 5 ms
Influence of temperature	≤ 0,1 %/°C
Time range switchable	0,05s...240h in 8 ranges
RoHS - Directive 2002/95/EC	compliant as per product date code 0515
Ambient temperature	-25...+55 °C

Function modules for MT 78 740, MT 78 745

Function	U/t	R
Delay ON		
Delay OFF		
single shot leading edge		
single shot trailing edge		
Delay ON triggered by signal contact		
single shot		
flasher starting with pause		
flasher starting with pulse		



F0201-B



F0203-B

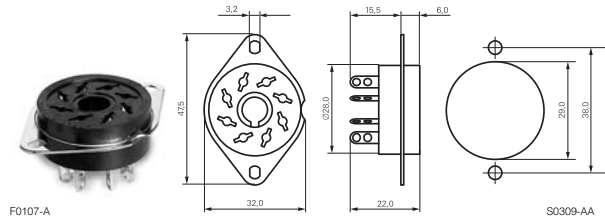


F0204-B

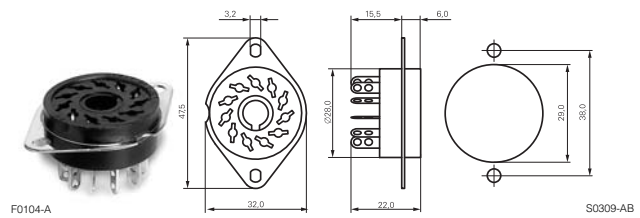
Accessories Multimode Relay MT (Continued)

MT sockets for PCB and with solder terminals MT 78 602/603/612/613

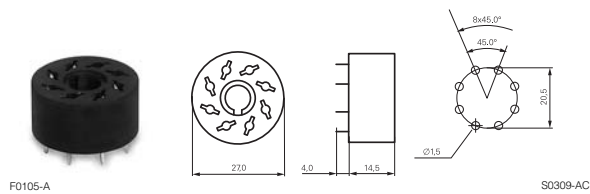
MT 78 612 Socket 8-pin with solder terminals



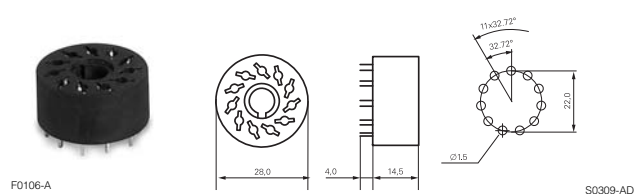
MT 78 613 Socket 11-pin with solder terminals



MT 78 602 Socket 8-pin with PCB terminals



MT 78 603 Socket 11-pin with PCB terminals



Technical data		MT 78 602/603/612/613
Rated voltage / max. switching voltage AC		240 / 400 VAC
Rated current		10 A
Dielectric strength coil-contact circuit		2500 V _{rms}
open contact circuit		1500 V _{rms}
adjacent contact circuits		2500 V _{rms}
Clearance / creepage coil-contact circuit		≥ 2.8/4 mm
Material group of insulation parts		IIIa
Insulation to IEC 60664-1		
Type of insulation coil-contact circuit		basic
open contact circuit		functional
adjacent contact circuits		basic
Rated insulation voltage		250
Pollution degree		2
Rated voltage system		230 / 400
Overvoltage category		III
RoHS - Directive 2002/95/EC		
MT 78 602, MT 78 603		compliant as per product date code 0517
MT 78 612, MT 78 613		compliant as per product date code 0543
Ambient temperature range		-40...+70°C
Terminals		pcb, solder terminals
Insertion cycles		A (10)
Max. Insertion Force total		100 N
Mounting distance		≥ 0, dense packing
Resistance to soldering heat		270°C / 10 s
Weight		7 g
Packaging unit		25 pcs

Sockets with solder and PCB terminals

Type	Part Number
MT 78 612 Socket 8-pin with solder terminals	7-1415043-1
MT 78 613 Socket 11-pin with solder terminals	8-1415043-1
MT 78 602 Socket 8-pin with PCB terminals	9-1415043-1
MT 78 603 Socket 11-pin with PCB terminals	1415044-1



Компания «ЭлектроПласт» предлагает заключение долгосрочных отношений при поставках импортных электронных компонентов на взаимовыгодных условиях!

Наши преимущества:

- Оперативные поставки широкого спектра электронных компонентов отечественного и импортного производства напрямую от производителей и с крупнейших мировых складов;
- Поставка более 17-ти миллионов наименований электронных компонентов;
- Поставка сложных, дефицитных, либо снятых с производства позиций;
- Оперативные сроки поставки под заказ (от 5 рабочих дней);
- Экспресс доставка в любую точку России;
- Техническая поддержка проекта, помощь в подборе аналогов, поставка прототипов;
- Система менеджмента качества сертифицирована по Международному стандарту ISO 9001;
- Лицензия ФСБ на осуществление работ с использованием сведений, составляющих государственную тайну;
- Поставка специализированных компонентов (Xilinx, Altera, Analog Devices, Intersil, Interpoint, Microsemi, Aeroflex, Peregrine, Syfer, Eurofarad, Texas Instrument, Miteq, Cobham, E2V, MA-COM, Hittite, Mini-Circuits, General Dynamics и др.);

Помимо этого, одним из направлений компании «ЭлектроПласт» является направление «Источники питания». Мы предлагаем Вам помощь Конструкторского отдела:

- Подбор оптимального решения, техническое обоснование при выборе компонента;
- Подбор аналогов;
- Консультации по применению компонента;
- Поставка образцов и прототипов;
- Техническая поддержка проекта;
- Защита от снятия компонента с производства.



Как с нами связаться

Телефон: 8 (812) 309 58 32 (многоканальный)

Факс: 8 (812) 320-02-42

Электронная почта: org@eplast1.ru

Адрес: 198099, г. Санкт-Петербург, ул. Калинина, дом 2, корпус 4, литера А.