

DATA SHEET

SKY65723-81: Low-Noise Amplifier Front-End Module with GPS/GNSS/BDS Pre-Filter

Applications

- GPS/GNSS/BDS radio receivers
- Global Navigation Satellite Systems (GLONASS)
- Fitness/activity trackers
- Smartphones
- Laptop PCs and tablets

Features

- Small signal gain: 16.5 dB typical
- Low noise figure: 1.5 dB typical
- Excellent out-of-band rejection
- Low current consumption
- Input/output impedance internally matched to 50 Ω
- Single DC supply: 1.62 to 3.6 V
- Minimal number of external components required
- Small MCM (6-pin, 1.7 x 2.3 mm) package (MSL3, 260 °C per JEDEC J-STD-020)



Skyworks Green™ products are compliant with all applicable legislation and are halogen-free. For additional information, refer to *Skyworks Definition of Green™*, document number SQ04-0074.

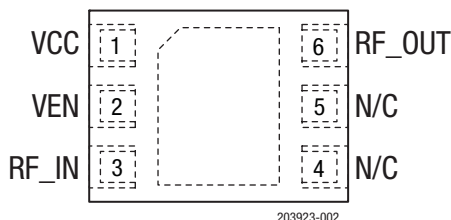


Figure 2. SKY65723-81 Pinout (Top View)

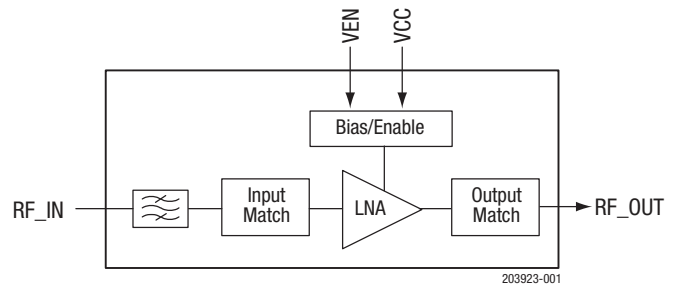


Figure 1. SKY65723-81 Block Diagram

Description

The SKY65723-81 is a front-end module (FEM) with an integrated low-noise amplifier (LNA) and pre-filter designed for Global Positioning System/Global Navigation Satellite System/Beidou Navigation Satellite System (GPS/GNSS/BDS) receiver applications. The device provides high linearity, excellent gain, a high 1 dB input compression point (IP1dB), and a superior noise figure (NF).

The pre-filter provides the low in-band insertion loss and integrated notch filtering for excellent rejections of the cellular, PCS, and WLAN frequency bands. The SKY65723-81 uses surface-mount technology (SMT) in the form of a 1.7 x 2.3 mm Multi-Chip Module (MCM) package, which allows for a highly manufacturable and low-cost solution.

A functional block diagram is shown in Figure 1. The pin configuration and package are shown in Figure 2. Signal pin assignments and functional pin descriptions are provided in Table 1.

Table 1. SKY65723-81 Signal Descriptions

Pin	Name	Description	Pin	Name	Description
1	VCC	Source voltage	4	N/C	Not connected or grounded with no impact to performance
2	VEN	LNA enable	5	N/C	Not connected or grounded with no impact to performance
3	RF_IN	RF input	6	RF_OUT	RF output

Technical Description

LNA Enable

The VEN signal (pin 2) enables or disables the LNA. A logic high signal powers on the LNA and a logic low signal powers off the device.

Electrical and Mechanical Specifications

The absolute maximum ratings of the SKY65723-81 are provided in Table 2. The recommended operating conditions are specified in Table 3, and electrical specifications are provided in Tables 4 and 5.

Table 2. SKY65723-81 Absolute Maximum Ratings¹

Parameter	Symbol	Minimum	Maximum	Units
RF input power	P _{IN}		+10	dBm
Supply voltage	V _{CC}	0	4.5	V
Storage temperature	T _{STG}	-55	+150	°C
Junction temperature	T _J		+150	°C
Electrostatic discharge: Human Body Model (HBM), Class 1A (at RF_IN pin)	ESD		250	V

¹ Exposure to maximum rating conditions for extended periods may reduce device reliability. There is no damage to device with only one parameter set at the limit and all other parameters set at or below their nominal value. Exceeding any of the limits listed here may result in permanent damage to the device.

ESD HANDLING: Although this device is designed to be as robust as possible, electrostatic discharge (ESD) can damage this device. This device must be protected at all times from ESD when handling or transporting. Static charges may easily produce potentials of several kilovolts on the human body or equipment, which can discharge without detection. Industry-standard ESD handling precautions should be used at all times.

Table 3. SKY65723-81 Recommended Operating Conditions

Parameter	Symbol	Min	Typ	Max	Units
Frequency range	f	1559	1575	1606	MHz
Supply voltage (measured at terminals of Evaluation Board)	V _{CC}	1.62	1.80	3.6	V
LNA enable:					
Enable (high)	LNA _{ENABLE}	V _{CC} - 0.3		V _{CC}	V
Disable (low)	LNA _{DISABLE}		0	0.3	V
Case operating temperature	T _C	-40		+85	°C

Table 4. SKY65723-81 Electrical Specifications¹**(f = 1575 MHz, V_{CC} = 1.8 V, V_{EN} = 1.8 V, T_C = +25 °C, Unless Otherwise Noted)**

Parameter	Symbol	Test Condition	Min	Typ	Max	Units
Small signal gain	S ₂₁	P _{IN} = -30 dBm	14	16.3		dB
Noise figure	NF		1	1.6 ²	3	dB
In-band third order input intercept point	IIP3	f ₁ = 1575 MHz, f ₂ = 1576 MHz, P _{IN} = -30 dBm		-9		dBm
1 dB input compression point	IP1dB			-15.5		dBm
Reverse isolation	S ₁₂	P _{IN} = -30 dBm		31		dB
Input return loss	S ₁₁	P _{IN} = -30 dBm		10		dB
Output return loss	S ₂₂	P _{IN} = -30 dBm		10		dB
Supply current	I _{CC}	No RF		4	5	mA
Shutdown current	I _{LEAK}	No RF, V _{EN} = 0 V		0.1	1	μA
Out-of-band rejection	OOB	P _{IN} = 0 dBm (in-band referred): @ 777 to 798 MHz @ 806 to 928 MHz @ 1710 to 1980 MHz @ 2400 to 2500 MHz @ 5160 to 5560 MHz		60 60 45 45 50		dBc dBc dBc dBc dBc
Band 13 2 nd harmonic	B13 _{2to}	P _{IN} = +15 dBm @ 787.76 MHz measured @ 1575.52 MHz output referred		-50		dBm
LNA turn-on time	T _{ON}	P _{IN} = -30 dBm, V _{CC} = 1.8 V, 50% of V _{ENABLE} to 90% final RF power		1		μs
LNA turn-off time	T _{OFF}	P _{IN} = -30 dBm, V _{CC} = 1.8 V, 50% of V _{ENABLE} to 10% final RF power		0.2		μs

¹ Performance is guaranteed only under the conditions listed in this table.² 0.1 dB has been de-embedded for input connector and trace loss.

Table 5. SKY65723-81 Electrical Specifications¹**(f = 1575 MHz, V_{CC} = 2.8 V, V_{EN} = 2.8 V, T_C = +25 °C, Unless Otherwise Noted)**

Parameter	Symbol	Test Condition	Min	Typ	Max	Units
Small signal gain	S21	P _{IN} = -30 dBm	14	16.8		dB
Noise figure	NF		1	1.5 ²	3	dB
In-band third order input intercept point	IIP3	f1 = 1575 MHz, f2 = 1576 MHz, P _{IN} = -30 dBm		-8		dBm
1 dB input compression point	IP1dB			-14.5		dBm
Reverse isolation	S12	P _{IN} = -30 dBm		31		dB
Input return loss	S11	P _{IN} = -30 dBm		10		dB
Output return loss	S22	P _{IN} = -30 dBm		10		dB
Supply current	I _{CC}	No RF		4.2	6	mA
Shutdown current	I _{LEAK}	No RF, V _{EN} = 0 V		0.1	1	μA
Out-of-band rejection	OOB	P _{IN} = 0 dBm (in-band referred): @ 777 to 798 MHz @ 806 to 928 MHz @ 1710 to 1980 MHz @ 2400 to 2500 MHz @ 5160 to 5560 MHz		60 60 45 45 50		dBc dBc dBc dBc dBc
Band 13 2 nd harmonic	B13 _{2to}	P _{IN} = +15 dBm @ 787.76 MHz measured @ 1575.52 MHz output referred		-50		dBm
LNA turn-on time	T _{ON}	P _{IN} = -30 dBm, V _{CC} = 2.8 V, 50% of V _{ENABLE} to 90% final RF power		1		μs
LNA turn-off time	T _{OFF}	P _{IN} = -30 dBm, V _{CC} = 2.8 V, 50% of V _{ENABLE} to 10% final RF power		0.2		μs

¹ Performance is guaranteed only under the conditions listed in this table.² 0.1 dB has been de-embedded for input connector and trace loss.

Evaluation Board Description

The SKY65723-81 Evaluation Board is used to test the performance of the SKY65723-81 LNA. The Evaluation Board schematic diagram is shown in Figure 3. An assembly drawing for the Evaluation Board is shown in Figure 4. Table 6 provides the Bill of Materials (BOM) list for Evaluation Board components.

Package Dimensions

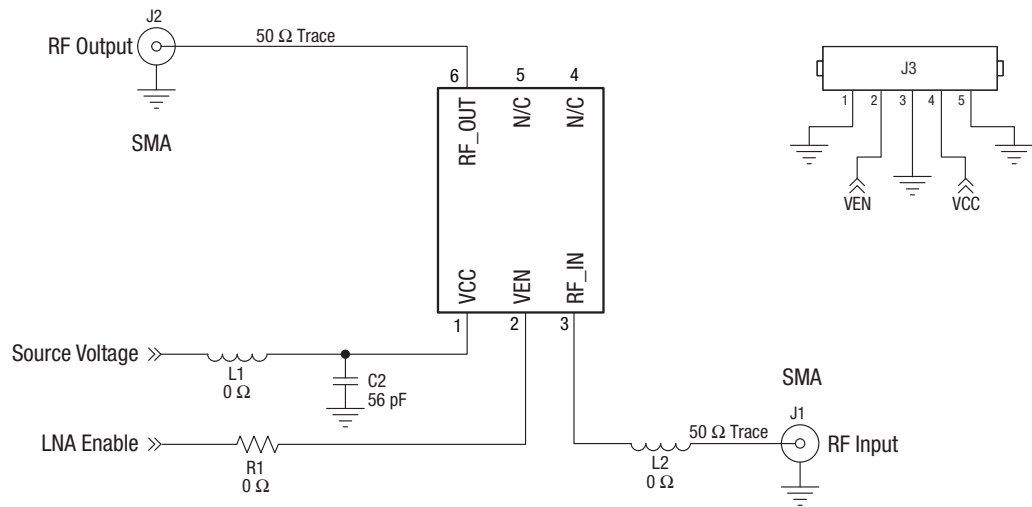
The Evaluation Board layer details for the SKY65723-81 are shown in Figure 5. Layer detail physical characteristics are shown in Figure 6. The PCB layout footprint is provided in Figure 7. Figure 8 shows the typical part marking. Package dimensions are shown in Figure 9, and tape and reel dimensions are provided in Figure 10.

Package and Handling Information

Since the device package is sensitive to moisture absorption, it is baked and vacuum packed before shipping. Instructions on the shipping container label regarding exposure to moisture after the container seal is broken must be followed. Otherwise, problems related to moisture absorption may occur when the part is subjected to high temperature during solder assembly.

The SKY65723-81 is rated to Moisture Sensitivity Level 3 (MSL3) at 260 °C. It can be used for lead or lead-free soldering. For additional information, refer to the Skyworks Application Note, *PCB Design & SMT Assembly/Rework Guidelines for MCM-L Packages*, document number 101752.

Care must be taken when attaching this product, whether it is done manually or in a production solder reflow environment. Production quantities of this product are shipped in a standard tape and reel format.



Note: DNI components are not shown.

203923-003

Figure 3. SKY65723-81 Evaluation Board Schematic

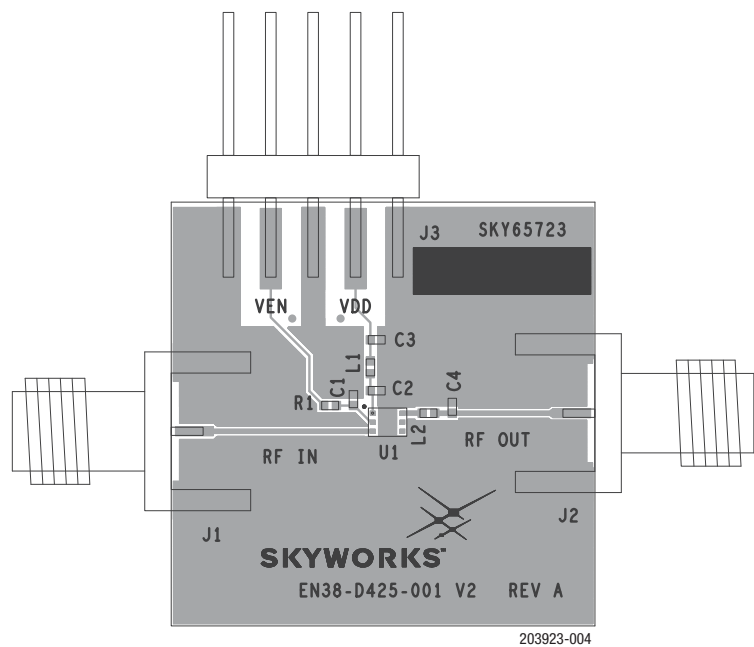


Figure 4. SKY65723-81 Evaluation Board Assembly Diagram

Table 6. SKY65723-81 Evaluation Board Bill of Materials

Component	Size	Value	Manufacturer	Mfr Part Number
C1, C3, C4	0402	DNI		
C2	0402	56 pF	Murata	GRM0335C1E560JA01D
L1, L2, R1	0402	0 Ω	Panasonic	ERJ-2GE0R00X

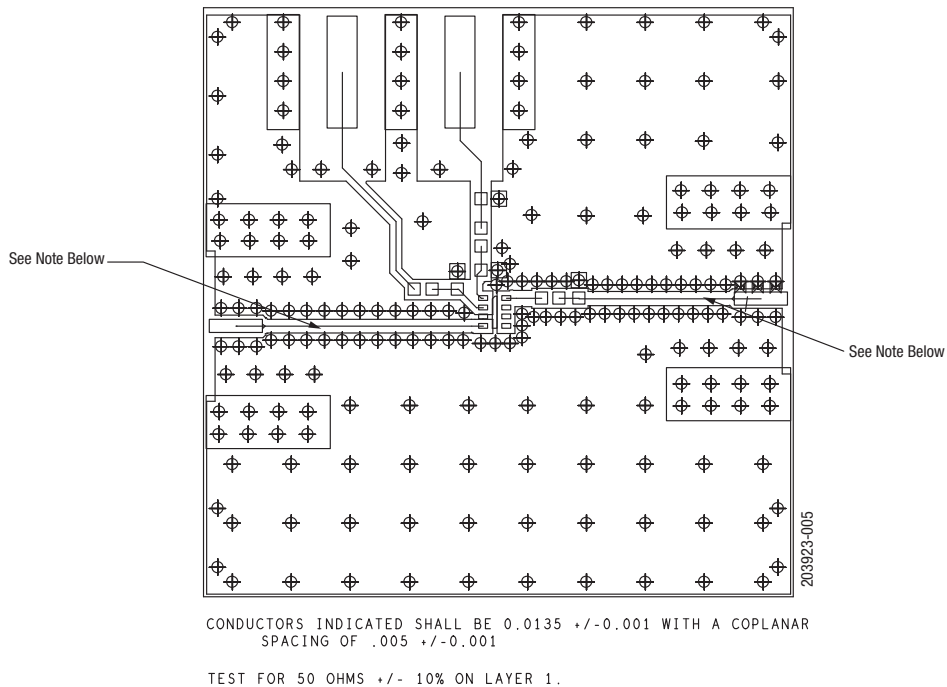
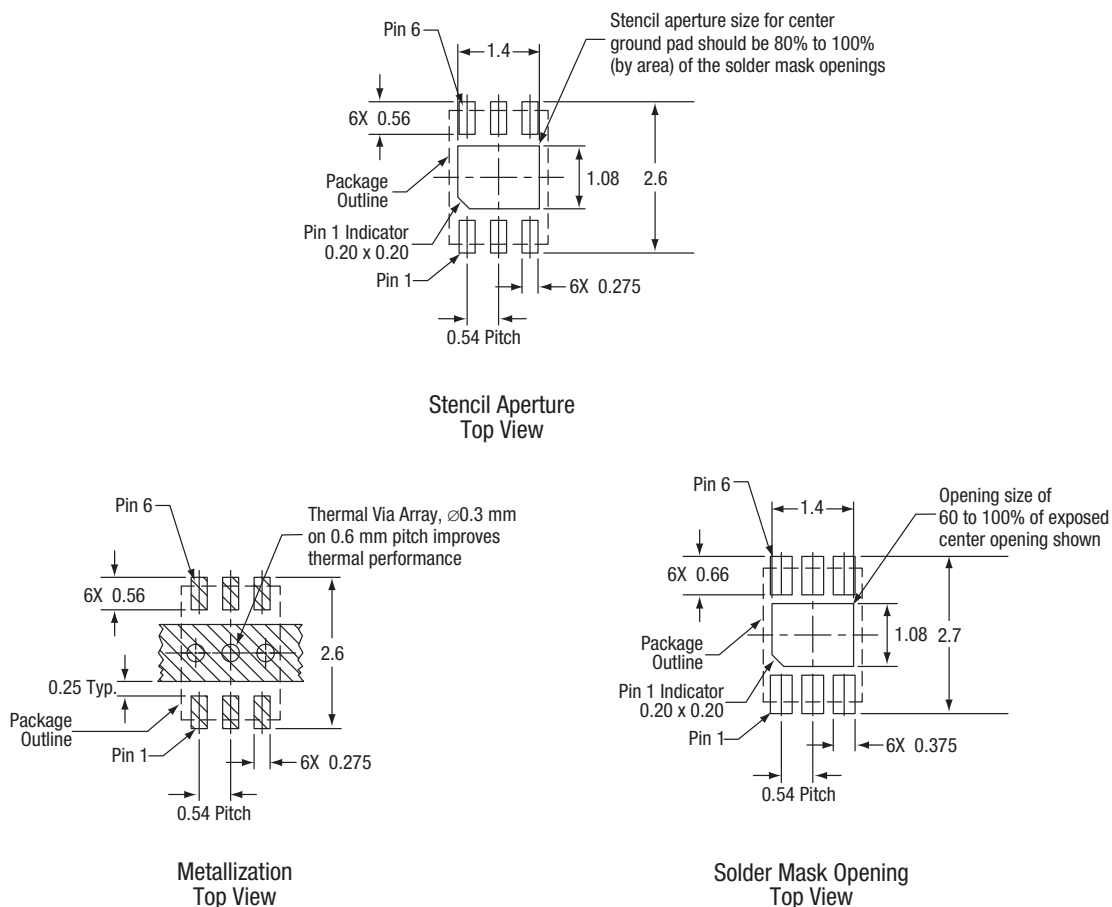


Figure 5. SKY65723-81 Evaluation Board Layer Details

Cross Section	Name	Thickness	Materials
 0.062 +/- 0.006	TOP SOLDERMASK		
	L1	(0.0007)	1/2 OZ. COPPER
	DIELECTRIC	0.008	ROGERS 4003
	L2	(0.0014)	1 OZ. COPPER
	DIELECTRIC	ADJUST TO MEET REQUIRED THICKNESS FR4	
	L3	(0.0007)	1/2 OZ. COPPER
	BOTTOM SOLDERMASK		

203923-006

Figure 6. SKY65723-81 Layer Detail Physical Characteristics



All dimensions are in millimeters

203923-007

Figure 7. SKY65723-81 PCB Layout Footprint

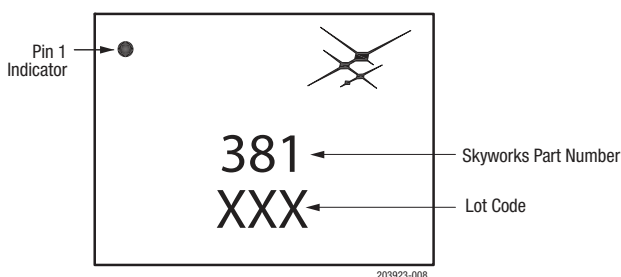


Figure 8. Typical Part Marking

1. DIMENSIONING AND TOLERANCING IN ACCORDANCE WITH ASME Y14.5M-1994.
2. SEE APPLICABLE BONDING DIAGRAM AND DEVICE ASSEMBLY DRAWING FOR DIE AND COMPONENT PLACEMENT.
3. PAD DEFINITIONS PER DETAILS ON DRAWING.
4. PCB TYPE 4L NS SSV-EO MCM (40)

DETAIL A
PAD
SCALE: 2X
3X THIS ROTATION
3X ROTATED 180°

3

AD

25

1.4

1.08

5X R0.05 MAX

0.20 x 45°

SOLDER MASK EDGES

DETAIL B

PAD

SCALE: 2X

1X THIS ROTATION

203923-001

203923-009

- Carrier tape: black conductive polycarbonate.
- Cover tape material: transparent adhesive material.
- ESD-surface resistivity is $\geq 1 \times 10^5 \sim \leq 1 \times 10^8$ Ohms/square per EIA JEDEC TNR Specification.
- 10-sprocket hole pitch cumulative tolerance: ± 0.20 mm.
- Ao and Bo measured on plane 0.30 mm above the bottom of pocket.
- Camber not to exceed 1 mm in 250 mm.
- All measurements are in millimeters.

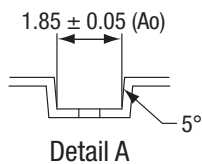


Figure 10. SKY65723-81 Tape and Reel Dimensions

Ordering Information

Product Description	Product Part Number	Evaluation Board Part Number
SKY65723-81: Low-Noise Amplifier FEM with GPS/GNSS/BDS Filter	SKY65723-81	65723-81-EVB

Copyright © 2016-2017 Skyworks Solutions, Inc. All Rights Reserved.

Information in this document is provided in connection with Skyworks Solutions, Inc. ("Skyworks") products or services. These materials, including the information contained herein, are provided by Skyworks as a service to its customers and may be used for informational purposes only by the customer. Skyworks assumes no responsibility for errors or omissions in these materials or the information contained herein. Skyworks may change its documentation, products, services, specifications or product descriptions at any time, without notice. Skyworks makes no commitment to update the materials or information and shall have no responsibility whatsoever for conflicts, incompatibilities, or other difficulties arising from any future changes.

No license, whether express, implied, by estoppel or otherwise, is granted to any intellectual property rights by this document. Skyworks assumes no liability for any materials, products or information provided hereunder, including the sale, distribution, reproduction or use of Skyworks products, information or materials, except as may be provided in Skyworks Terms and Conditions of Sale.

THE MATERIALS, PRODUCTS AND INFORMATION ARE PROVIDED "AS IS" WITHOUT WARRANTY OF ANY KIND, WHETHER EXPRESS, IMPLIED, STATUTORY, OR OTHERWISE, INCLUDING FITNESS FOR A PARTICULAR PURPOSE OR USE, MERCHANTABILITY, PERFORMANCE, QUALITY OR NON-INFRINGEMENT OF ANY INTELLECTUAL PROPERTY RIGHT; ALL SUCH WARRANTIES ARE HEREBY EXPRESSLY DISCLAIMED. SKYWORKS DOES NOT WARRANT THE ACCURACY OR COMPLETENESS OF THE INFORMATION, TEXT, GRAPHICS OR OTHER ITEMS CONTAINED WITHIN THESE MATERIALS. SKYWORKS SHALL NOT BE LIABLE FOR ANY DAMAGES, INCLUDING BUT NOT LIMITED TO ANY SPECIAL, INDIRECT, INCIDENTAL, STATUTORY, OR CONSEQUENTIAL DAMAGES, INCLUDING WITHOUT LIMITATION, LOST REVENUES OR LOST PROFITS THAT MAY RESULT FROM THE USE OF THE MATERIALS OR INFORMATION, WHETHER OR NOT THE RECIPIENT OF MATERIALS HAS BEEN ADVISED OF THE POSSIBILITY OF SUCH DAMAGE.

Skyworks products are not intended for use in medical, lifesaving or life-sustaining applications, or other equipment in which the failure of the Skyworks products could lead to personal injury, death, physical or environmental damage. Skyworks customers using or selling Skyworks products for use in such applications do so at their own risk and agree to fully indemnify Skyworks for any damages resulting from such improper use or sale.

Customers are responsible for their products and applications using Skyworks products, which may deviate from published specifications as a result of design defects, errors, or operation of products outside of published parameters or design specifications. Customers should include design and operating safeguards to minimize these and other risks. Skyworks assumes no liability for applications assistance, customer product design, or damage to any equipment resulting from the use of Skyworks products outside of stated published specifications or parameters.

Skyworks and the Skyworks symbol are trademarks or registered trademarks of Skyworks Solutions, Inc. or its subsidiaries in the United States and other countries. Third-party brands and names are for identification purposes only, and are the property of their respective owners. Additional information, including relevant terms and conditions, posted at www.skyworksinc.com, are incorporated by reference.



Компания «ЭлектроПласт» предлагает заключение долгосрочных отношений при поставках импортных электронных компонентов на взаимовыгодных условиях!

Наши преимущества:

- Оперативные поставки широкого спектра электронных компонентов отечественного и импортного производства напрямую от производителей и с крупнейших мировых складов;
- Поставка более 17-ти миллионов наименований электронных компонентов;
- Поставка сложных, дефицитных, либо снятых с производства позиций;
- Оперативные сроки поставки под заказ (от 5 рабочих дней);
- Экспресс доставка в любую точку России;
- Техническая поддержка проекта, помощь в подборе аналогов, поставка прототипов;
- Система менеджмента качества сертифицирована по Международному стандарту ISO 9001;
- Лицензия ФСБ на осуществление работ с использованием сведений, составляющих государственную тайну;
- Поставка специализированных компонентов (Xilinx, Altera, Analog Devices, Intersil, Interpoint, Microsemi, Aeroflex, Peregrine, Syfer, Eurofarad, Texas Instrument, Miteq, Cobham, E2V, MA-COM, Hittite, Mini-Circuits, General Dynamics и др.);

Помимо этого, одним из направлений компании «ЭлектроПласт» является направление «Источники питания». Мы предлагаем Вам помощь Конструкторского отдела:

- Подбор оптимального решения, техническое обоснование при выборе компонента;
- Подбор аналогов;
- Консультации по применению компонента;
- Поставка образцов и прототипов;
- Техническая поддержка проекта;
- Защита от снятия компонента с производства.



Как с нами связаться

Телефон: 8 (812) 309 58 32 (многоканальный)

Факс: 8 (812) 320-02-42

Электронная почта: org@eplast1.ru

Адрес: 198099, г. Санкт-Петербург, ул. Калинина, дом 2, корпус 4, литера А.