

MAXM17532 Evaluation Kit

Evaluates: MAXM17532 5V Output-Voltage Application

General Description

The MAXM17532 evaluation kit (EV kit) is a demonstration circuit of the MAXM17532 42V,100mA ultra-small, high efficiency, current mode, synchronous step-down DC-DC switching power module. The EV kit operates over a wide input-voltage of 10V to 42V and provides up to 100mA load current with a 5V output voltage. The EV kit is programmed to switch at a frequency of 600kHz. The module is simple to use and easily configurable with minimal external components. It features cycle-by-cycle peak current-limit protection, undervoltage lockout (EN/UVLO), and thermal shutdown.

The EV kit comes with the compact 10-pin 2.6mm x 3mm x 1.5mm uSLIC™ package MAXM17532 module installed, and is rated to operate over the full industrial/automotive -40°C to +125°C temperature range.

Features

- Wide 10V to 42V Input
- ±1.75% Feedback Voltage Accuracy
- Output: 5V,100mA
- Internally Compensated
- All Ceramic Capacitors and Ultra-Compact Solution
- PFM or Forced-PWM Mode of Operation
- Shutdown Current as Low as 1.2µA (typ)
- Programmable Soft-Start and Prebias Startup
- Open-Drain Power Good Output ($\overline{\text{RESET}}$ pin)
- Programmable EN/UVLO Threshold
- Hiccup Overcurrent Protection (OCP)
- Overtemperature Protection (OTP)
- Complies with CISPR22 (EN55022) Class B Conducted and Radiated Emissions
- Passes Drop, Shock, and Vibration Standards—JESD22-B103, B104, B111
- -40°C to +125°C Industrial/Automotive Temperature Range

Quick Start

Recommended Equipment

- MAXM17532EVKIT#, MAXM17532 evaluation kit
- 42V DC power supply
- Dummy load capable of sinking 100mA
- Digital voltmeter (DVM)
- 100MHz dual-trace oscilloscope

Procedure

The MAXM17532 EV kit is fully assembled and tested. Please follow the steps below to verify the board operation. **Caution: Do not turn on the power supply until all connections are completed.**

- 1) Set the power supply at a voltage between 10V and 42V. Disable the power supply.
- 2) Connect the positive and negative terminals of the power supply to VIN and GND PCB pads, respectively.
- 3) Connect the positive and negative terminals of the 100mA load to VOUT and GND PCB pads respectively, and set the load to 0A.
- 4) Connect the DVM across the VOUT PCB pad and the GND PCB pad closest to VOUT PCB pad.
- 5) Enable the input power supply.
- 6) Verify the DVM across output display 5V.
- 7) Increase the load up to 100mA to verify the output voltage is 5V using DVM.

Ordering Information appears at end of data sheet.

uSLIC is a trademark of Maxim Integrated Products, Inc.

Detailed Description of Hardware

The MAXM17532 EV kit is a proven circuit to demonstrate the high-voltage, high-efficiency, and compact solution size of the MAXM17532 synchronous step-down DC-DC power module. The output voltage is preset to 5V to operate from 10V to 42V input and provides up to 100mA load current. The optimal frequency is set at 600kHz to maximize efficiency and minimize component size. The EV kit includes two test points, TP1 for monitoring the LX and TP2 for measuring the $\overline{\text{RESET}}$ voltage.

Soft-Start Input (SS)

The module offers a fixed 5.1ms internal soft-start when the SS pin is left unconnected. When adjustable soft-start time is required, connect a capacitor from SS to GND to program the soft-start time. The minimum soft-start time is related to the output capacitance (C_{OUT}) and the output voltage (V_{OUT}) by the following equation:

$$t_{\text{SS}} > 0.05 \times C_{\text{OUT}} \times V_{\text{OUT}}$$

where t_{SS} is in milliseconds and C_{OUT} is in μF .

Soft-start time (t_{SS}) is related to the capacitor connected at SS (C_3) by the following equation:

$$C_3 = 6.25 \times t_{\text{SS}}$$

where t_{SS} is in ms and C_3 is in nF.

Mode Selection (MODE)

The device features a MODE pin for selecting either forced-PWM or PFM mode of operation. If the MODE pin is left unconnected, the device operates in PFM mode at light loads. If the MODE pin is grounded, the device

operates in a constant-frequency forced-PWM mode at all loads. The mode of operation cannot be changed on-the-fly during normal operation of the device. Refer to the MAXM17532 module data sheet for more information on the PWM and PFM modes of operation. [Table 1](#) shows the EV kit jumper settings that can be used to configure the desired mode of operation.

External Synchronization (RT/SYNC)

The RT/SYNC pin can be used to synchronize module's internal oscillator to an external system clock. Refer to the *External Synchronization* section in the **MAXM17532 data sheet** for additional information on configuring the external clock synchronization.

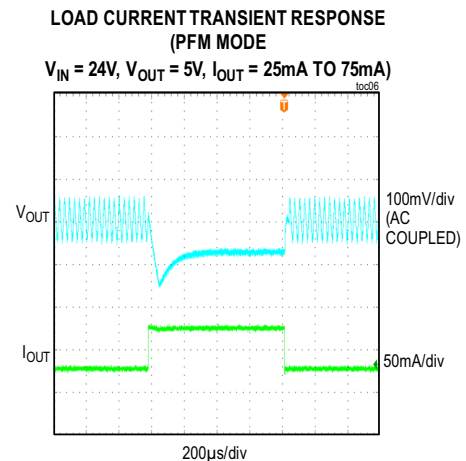
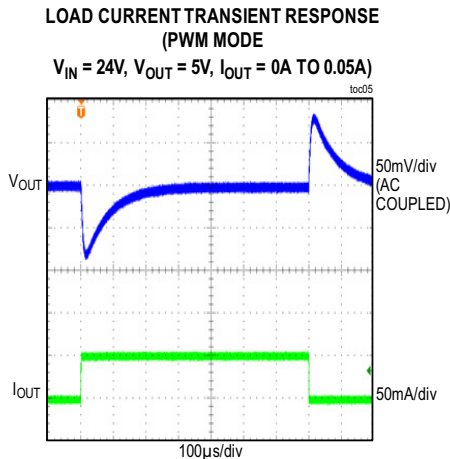
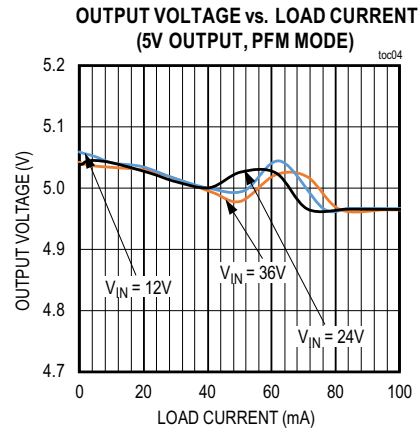
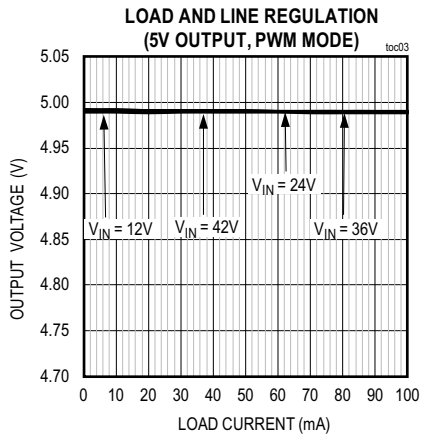
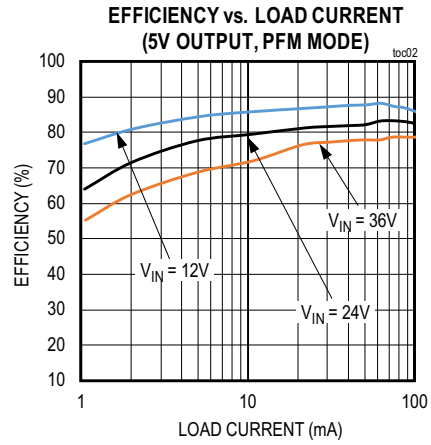
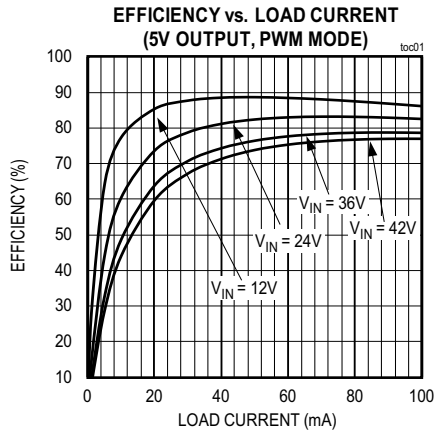
Reset Output ($\overline{\text{RESET}}$)

The module includes an open-drain $\overline{\text{RESET}}$ output to monitor output voltage. $\overline{\text{RESET}}$ should be pulled up with an external resistor to the desired external power supply less than or equal to 5.5V. $\overline{\text{RESET}}$ goes high-impedance 2ms after the output rises above 95% of its nominal set value and pulls low when the output voltage falls below 92% of the set nominal output voltage. $\overline{\text{RESET}}$ asserts low during the hiccup timeout period. In this EV kit, R7 resistor can be used to pull up the $\overline{\text{RESET}}$ to the output voltage.

Table 1. MODE Configuration (J1)

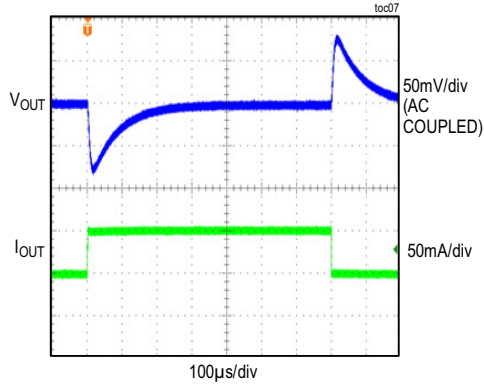
POSITION	MODE PIN	MAXM17532 OPERATION
1-2	Connected to GND	PWM mode
Not Installed	Open	PFM mode

EV Kit Performance Report

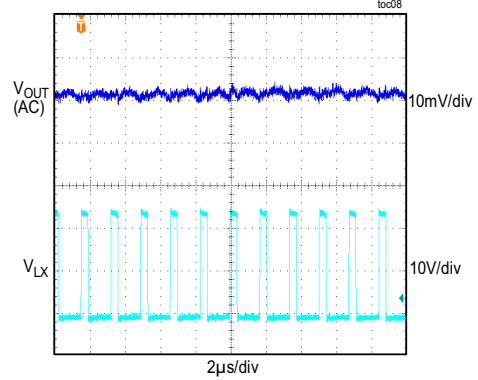


EV Kit Performance Report (continued)

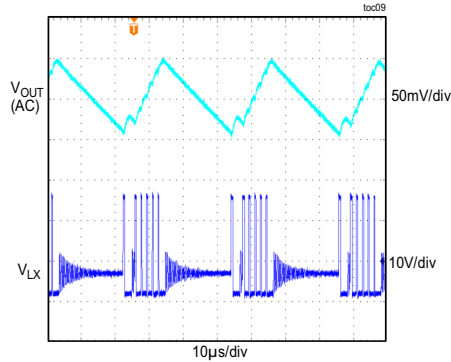
LOAD CURRENT TRANSIENT RESPONSE
($V_{IN} = 24V$, $V_{OUT} = 5V$, $I_{OUT} = 0.05A$ TO $0.1A$)



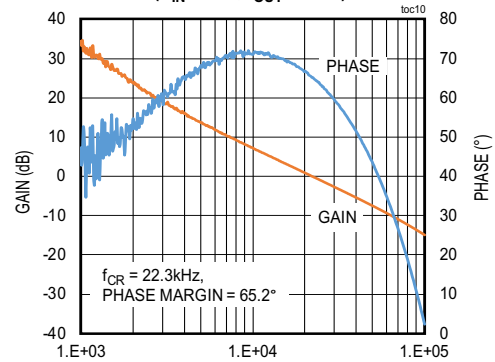
STEADY-STATE SWITCHING WAVEFORMS
(5V OUTPUT, 0.1A LOAD CURRENT, PWM MODE)



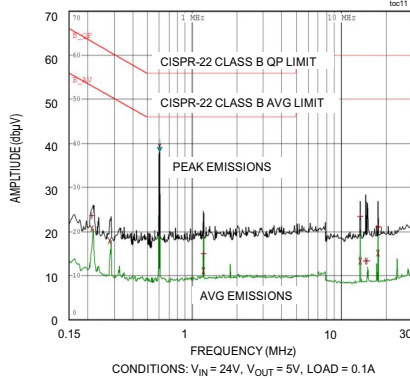
STEADY-STATE SWITCHING WAVEFORMS,
(5V OUTPUT, 0.02A LOAD CURRENT, PFM MODE)



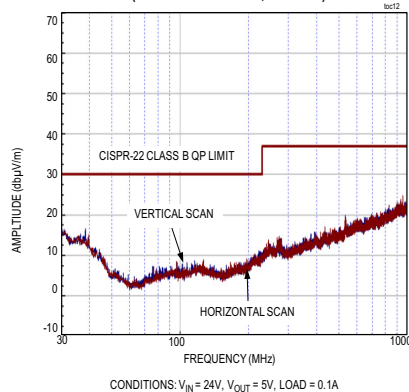
BODE PLOT
($V_{IN} = 24V$, $I_{OUT} = 0.1A$)



CONDUCTED EMISSION PLOT
(WITH FILTER L = 10µH, C = 1µF)



RADIATED EMISSION PLOT
(NO FILTER L = SHORT, C = OPEN)



MAXM17532 Evaluation Kit

Evaluates: MAXM17532
5V Output-Voltage Application

MAXM17532 EV Kit Bill of Materials

S NO	DESIGNATION	QTY	DESCRIPTION	MANUFACTURER PARTNUMBER - 1	MANUFACTURER PARTNUMBER - 1
1	C1	1	CAPACITOR; SMT (0805); CERAMIC CHIP; 2.2UF; 50V; TOL=10%; MODEL=; TG=-55 DEGC TO +125 DEGC; TC=X7R	TDK C2012X7R1H225K	
2	C2	1	CAPACITOR; SMT (0805); CERAMIC CHIP; 10UF; 16V; TOL=10%; TG=-55 DEGC TO +105 DEGC; TC=X6S	MURATA GRM21BC81C106KA73	
3	C5	1	CAPACITOR; SMT (CASE_D); ALUMINUM-ELECTROLYTIC; 22UF; 50V; TOL=20%; TG=-40 DEGC TO +85 DEGC; AUTO	PANASONIC EEE-1HA220WAP	
4	C7, C11	2	CAPACITOR; SMT (0402); CERAMIC CHIP; 0.1UF; 50V; TOL=10%; TG=-55 DEGC TO +125 DEGC; TC=X7R	TDK CGA2B3X7R1H104K;C1005X7R1H104K050BB	MURATA GRM155R71H104KE14;GCM155R71H104KE02
5	R1	1	RESISTOR; 0402; 261K OHM; 1%; 100PPM; 0.063W; METAL FILM	VISHAY DALE CRCW0402261KFK	VISHAY DALE
6	R2	1	RESISTOR; 0402; 49.9K; 1%; 100PPM; 0.0625W; THICK FILM	VISHAY DALE CRCW040249K9FK	YAGEO 9C04021A4992FLHF3
7	R3	1	RESISTOR; 0402; 69.8K OHM; 1%; 100PPM; 0.10W; THICK FILM	PANASONIC ERJ-2RKF6982X	
8	R4	1	RESISTOR; 0402; 3.01M OHM; 1%; 100PPM; 0.063W; METAL FILM	VISHAY DALE CRCW04023M01FK	
9	R5	1	RESISTOR; 0402; 422K OHM; 1%; 100PPM; 0.063W; METAL FILM	VISHAY DALE CRCW0402422KFK	
10	R7	1	RESISTOR; 0402; 100K OHM; 1%; 100PPM; 0.10W; THICK FILM	PANASONIC ERJ-2RKF1003X	
13	U1	1	EVKIT PART-IC; COMPACT HIGH VOLTAGE; HIGH-EFFICIENCY STEP-DOWN POWER MODULE; PKG. CODE: M102A3+1	MAXM17532AMB+	MAXIM
14	C4	0	PACKAGE OUTLINE 0805 NON-POLAR CAPACITOR	N/A	N/A
15	C3	0	PACKAGE OUTLINE 0402 NON-POLAR CAPACITOR	N/A	N/A

Ordering Information

PART	TYPE
MAXM17532EVKIT#	EV KIT

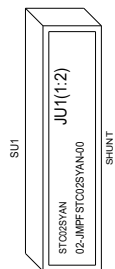
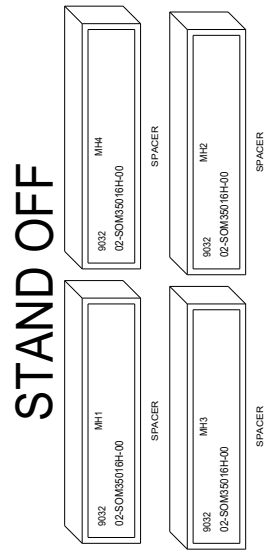
#Denotes RoHS compliant.

Component Suppliers

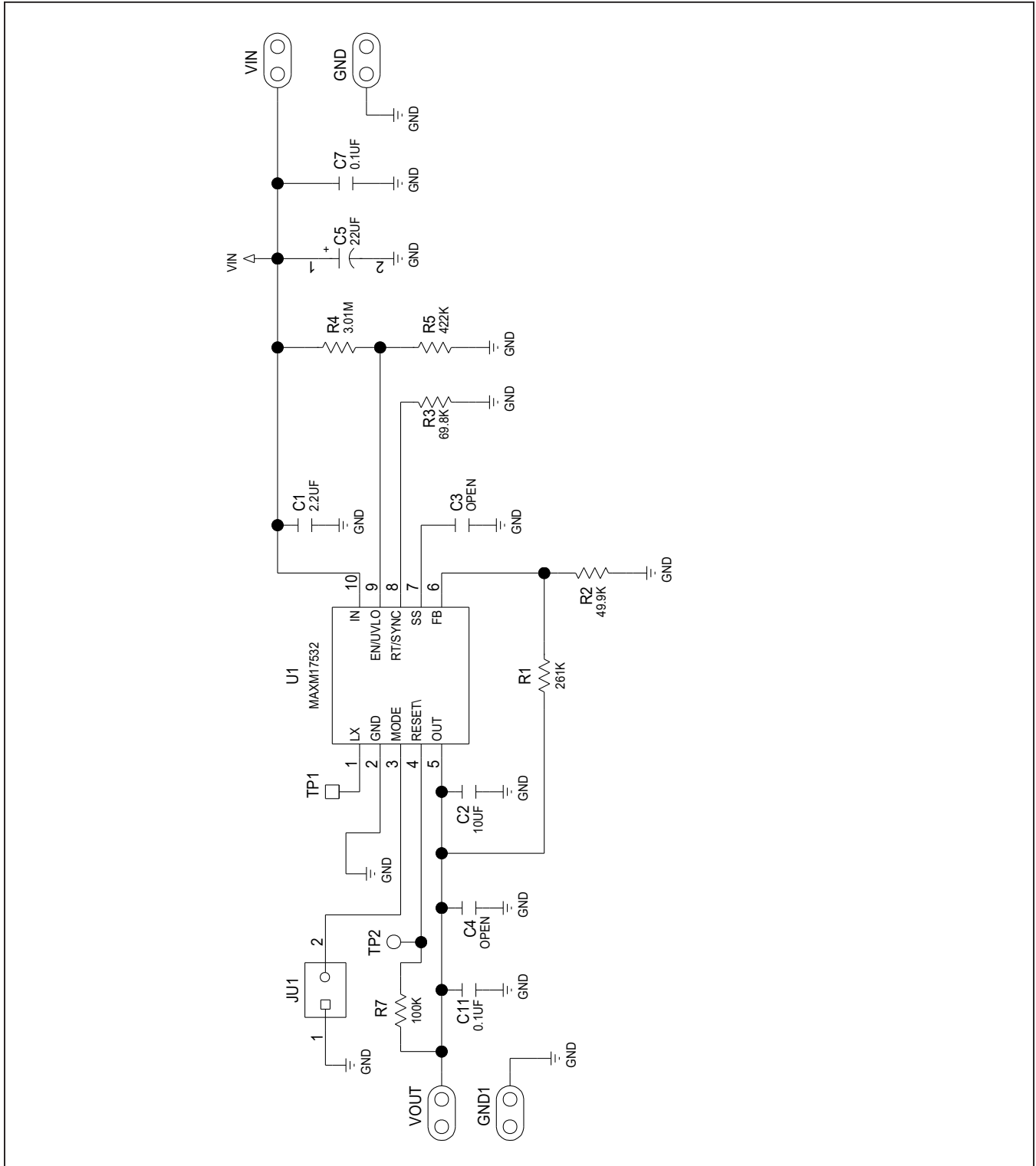
SUPPLIER	WEBSITE
Murata Americas	www.murata.com
Panasonic Corp.	www.panasonic.com

MAXM17532 EV Kit Schematic

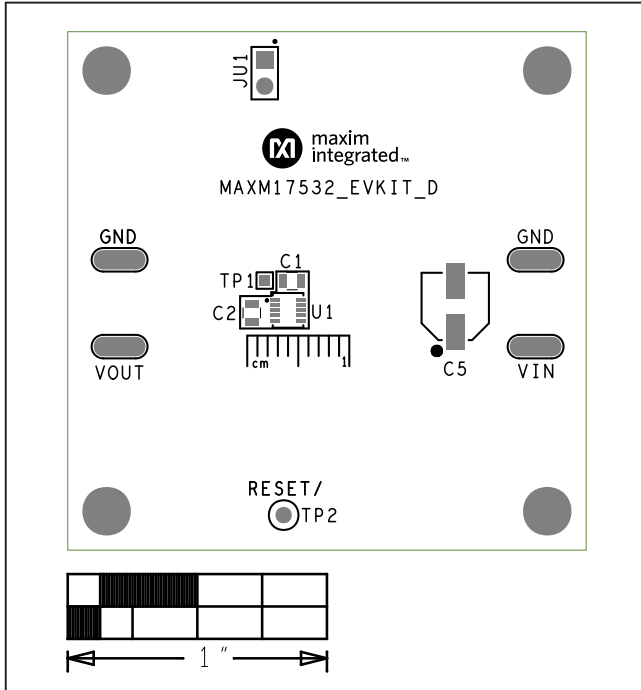
MECHANICAL



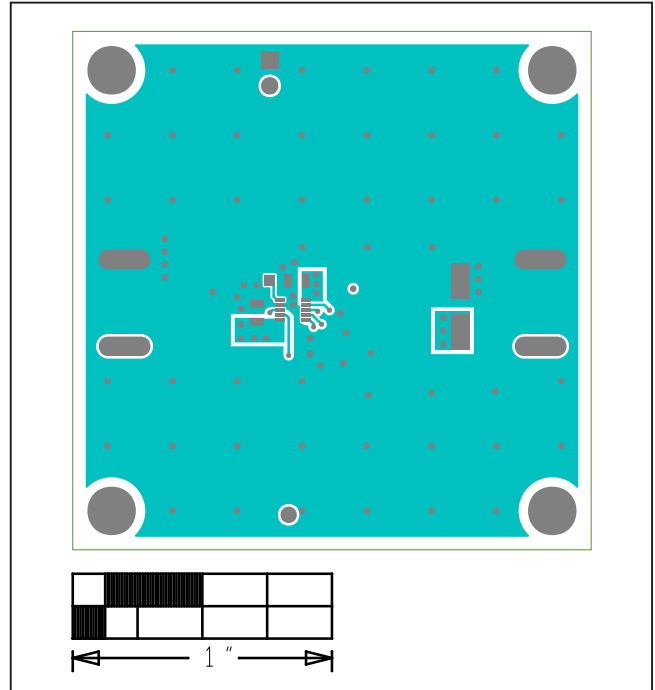
MAXM17532 EV Kit Schematic (continued)



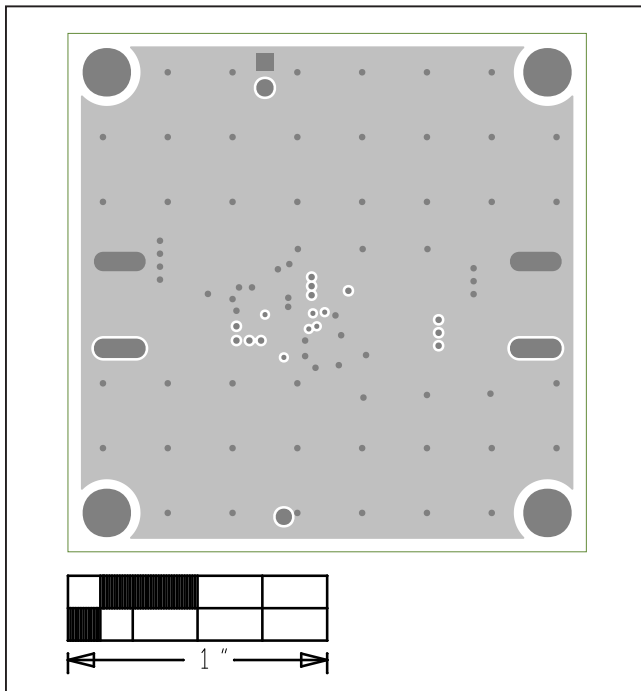
MAXM17532 EV Kit PCB Layouts



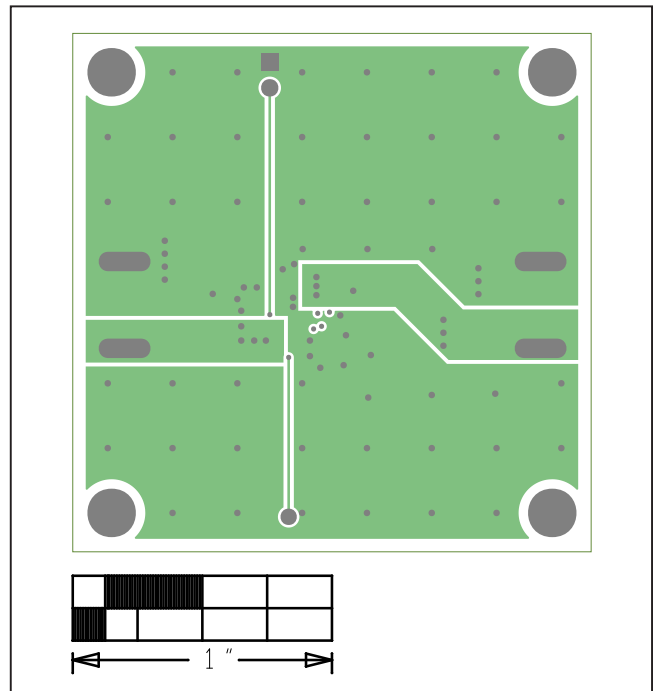
MAXM17532 EV Kit Silk Top



MAXM17532 EV Kit Top

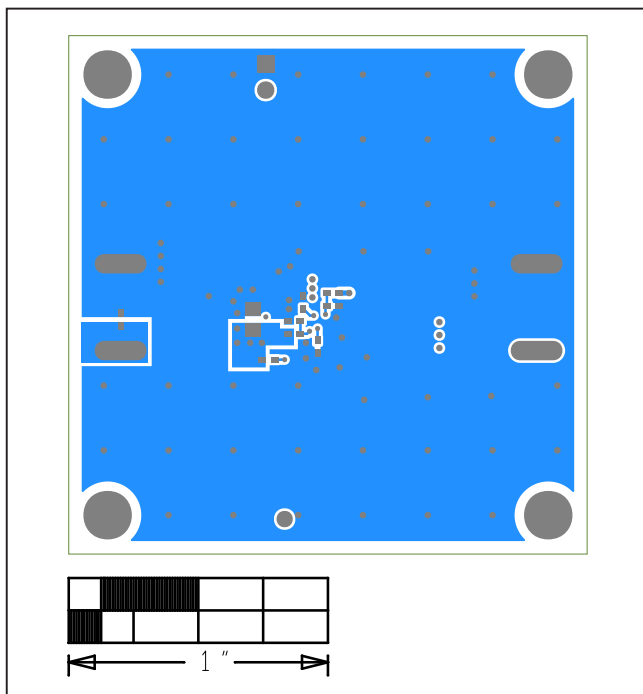


MAXM17532 EV Kit Ground

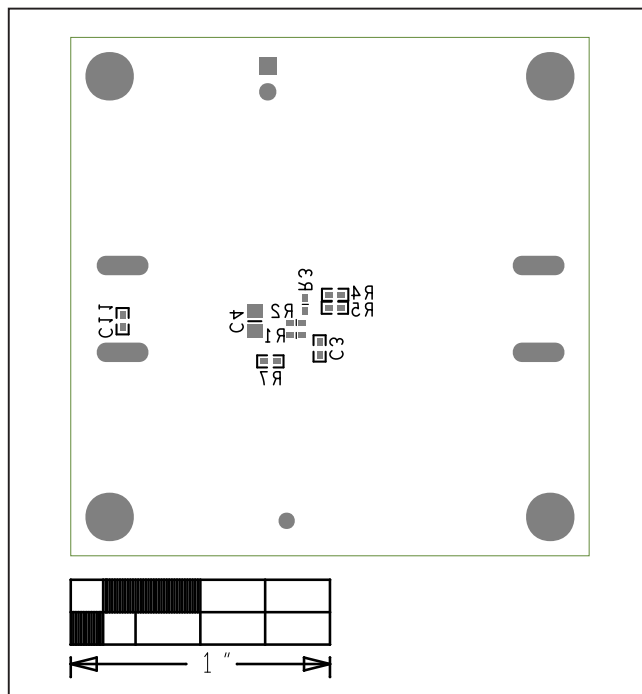


MAXM17532 EV Kit Power

MAXM17532 EV Kit PCB Layouts (continued)



MAXM17532 EV Kit Bottom



MAXM17532 EV Kit Silk Bottom

Revision History

REVISION NUMBER	REVISION DATE	DESCRIPTION	PAGES CHANGED
0	8/17	Initial release	—
1	8/18	Updated the <i>General Description</i> , <i>Features</i> , <i>Quick Start</i> , and <i>Detailed Description of Hardware</i> sections; added Table 1 and <i>Mode Selection (MODE)</i> section; replaced <i>EV Kit Performance Report</i> , <i>Bill of Materials</i> , <i>Schematic</i> , and <i>PCB Layout</i> .	1–6

For pricing, delivery, and ordering information, please visit Maxim Integrated's online storefront at <https://www.maximintegrated.com/en/storefront/storefront.html>.

Maxim Integrated cannot assume responsibility for use of any circuitry other than circuitry entirely embodied in a Maxim Integrated product. No circuit patent licenses are implied. Maxim Integrated reserves the right to change the circuitry and specifications without notice at any time.



Компания «ЭлектроПласт» предлагает заключение долгосрочных отношений при поставках импортных электронных компонентов на взаимовыгодных условиях!

Наши преимущества:

- Оперативные поставки широкого спектра электронных компонентов отечественного и импортного производства напрямую от производителей и с крупнейших мировых складов;
- Поставка более 17-ти миллионов наименований электронных компонентов;
- Поставка сложных, дефицитных, либо снятых с производства позиций;
- Оперативные сроки поставки под заказ (от 5 рабочих дней);
- Экспресс доставка в любую точку России;
- Техническая поддержка проекта, помощь в подборе аналогов, поставка прототипов;
- Система менеджмента качества сертифицирована по Международному стандарту ISO 9001;
- Лицензия ФСБ на осуществление работ с использованием сведений, составляющих государственную тайну;
- Поставка специализированных компонентов (Xilinx, Altera, Analog Devices, Intersil, Interpoint, Microsemi, Aeroflex, Peregrine, Syfer, Eurofarad, Texas Instrument, Miteq, Cobham, E2V, MA-COM, Hittite, Mini-Circuits, General Dynamics и др.);

Помимо этого, одним из направлений компании «ЭлектроПласт» является направление «Источники питания». Мы предлагаем Вам помощь Конструкторского отдела:

- Подбор оптимального решения, техническое обоснование при выборе компонента;
- Подбор аналогов;
- Консультации по применению компонента;
- Поставка образцов и прототипов;
- Техническая поддержка проекта;
- Защита от снятия компонента с производства.



Как с нами связаться

Телефон: 8 (812) 309 58 32 (многоканальный)

Факс: 8 (812) 320-02-42

Электронная почта: org@eplast1.ru

Адрес: 198099, г. Санкт-Петербург, ул. Калинина, дом 2, корпус 4, литера А.