

KUHP series

30 Amp Power Relays

File E22575

File LR15734-123

Users should thoroughly review the technical data before selecting a product part number. It is recommended that users also seek out the pertinent approvals files of the agencies/laboratories and review them to ensure the product meets the requirements for a given application.

Features

- AC coils 6-277VAC 50/60 Hz., DC 6-110VDC.
- Contact arrangement up to DPDT.
- .250" combination push-on/solder terminals or PC terminals.
- Side flange and top flange mounting.
- Designed to meet VDE space requirements.
- Class B coil insulation.

Contact Data @ 25°C

Arrangements: 1 Form C (SPDT) and 2 Form C (DPDT).

Material: Silver or silver-cadmium oxide.

Expected Mechanical Life: 10 million operations.

Contact Ratings

| Contact Arrangement | UL/CSA Ratings | Expected Life |
|------------------------------------------|----------------------------------------------------------------------------------------------------|---------------|
| 1 Form C Single Pole Double Throw | 30A 120/240VAC 1 HP @ 120VAC, 1 1/2 HP @ 240VAC 25A @ 28VDC | 100,000 ops. |
| 2 Form C Double Pole Double Throw | 20A @ 120/240VAC 3/4 HP @ 120VAC 1 1/2 HP @ 240VAC 20A @ 28VDC 7A @ 120VAC (Tungsten)* | 100,000 ops. |

*NO contacts only.

Initial Dielectric Strength

- Between Open Contacts:** 1,200V rms.
- Between Adjacent Contacts:** 3,750V rms.
- Between Contacts and Coil:** 3,750V rms.
- Between Coil and Frame:** 2,000V rms.

Coil Data @ 25°C

Voltage: 6-110VDC and 6-277VAC.

Nominal Power:

DC Coils: 1.2 Watts.

AC Coils: 2.7VA.

Duty Cycle: Continuous.

Initial Insulation Resistance: 100 megohms, min.

Insulation: Class B, 130°C.

Coil Data

| | Nominal Voltage | DC Resistance in Ohms ± 10%* | Must Operate Voltage | Nominal Coil Current (mA) |
|-----------------|-----------------|------------------------------|----------------------|---------------------------|
| DC Coils | 6 | 32.1 | 4.5 | 187 |
| | 12 | 120 | 9.0 | 100 |
| | 24 | 472 | 18.0 | 51 |
| | 48 | 1,800 | 36.0 | 26.7 |
| | 110 | 10,000 | 82.5 | 11 |
| AC Coils | 6 | 4.2 | 5.1 | 460 |
| | 12 | 18 | 10.2 | 230 |
| | 24 | 72 | 20.4 | 115 |
| | 120 | 1,700 | 102.0 | 24 |
| | 240 | 7,200 | 204.0 | 12 |
| | 277 | 10,250 | 235.5 | 9 |

*±15% for AC coils.

Operate Data @ 25°C

Must Operate Voltage:

DC Coils: 75% of nominal.

AC Coils: 85% of nominal.

Operate Time (Excluding Bounce): 20 milliseconds, typical, at nominal voltage.

Release Time (Excluding Bounce): 20 milliseconds, typical, at nominal voltage.

Environmental Data

Temperature Range: (Operating)

DC Coils: -45°C to +70°C.

AC Coils: -45°C to +45°C.

Shock: 15g's, 11 ms (non-operating).

Vibration: .065" double amplitude, 10-55 Hz.

Mechanical Data

Termination: .250" quick connect/solder; and PC board.

Enclosure: Polycarbonate dust cover.

Weight: 3.2 oz. (92g) approximately.

Ordering Information

| Typical Part No. ▶ | KUHP- | 11 | A | 5 | 1 | -120 |
|-----------------------------------------------------------------------------------------------------------------------------------------------------------------------------|-------|----|---|---|---|------|
| 1. Basic Series and Type: KUHP = Enclosed 20/30 amp relay. | | | | | | |
| 2. Contact Arrangement and Rating: 5 = 1C (SPDT); 30 amps. 11 = 2C (DPDT); 20 amps. | | | | | | |
| 3. Coil Input: A = AC, 50/60 Hz. D = DC | | | | | | |
| 4. Mountings: 1 = PLAIN CASE 5 = BRACKET MOUNT CASE T = TOP FLANGE CASE | | | | | | |
| 5. Terminals and Contact Materials: 1 = .250" (6.35mm) quick connect/solder; silver-cadmium oxide. 7 = .047" (1.19mm) printed circuit; silver-cadmium oxide. | | | | | | |
| 6. Coil Voltage: AC coils to 277VAC, 50/60 Hz. DC coils to 110VDC. | | | | | | |

NOTE: No sockets are available for this relay.

Our authorized distributors are more likely to maintain the following items in stock for immediate delivery.

| | | | | | | |
|---------------|---------------|--------------|---------------|----------------|---------------|---------------|
| KUHP-5A51-24 | KUHP-5AT1-120 | KUHP-5D51-24 | KUHP-5DT1-24 | KUHP-11A51-120 | KUHP-11D51-12 | KUHP-11DT1-12 |
| KUHP-5A51-120 | KUHP-5D51-12 | KUHP-5DT1-12 | KUHP-11A51-24 | KUHP-11AT1-120 | KUHP-11D51-24 | KUHP-11DT1-24 |

Dimensions are shown for reference purposes only.

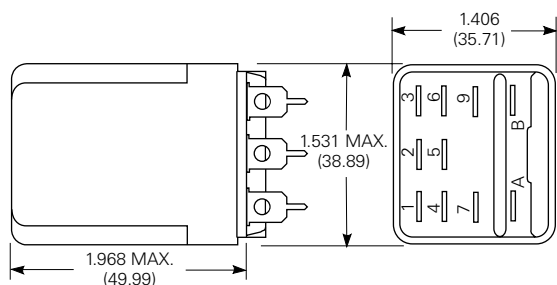
Dimensions are in inches over (millimeters) unless otherwise specified.

Specifications and availability subject to change.

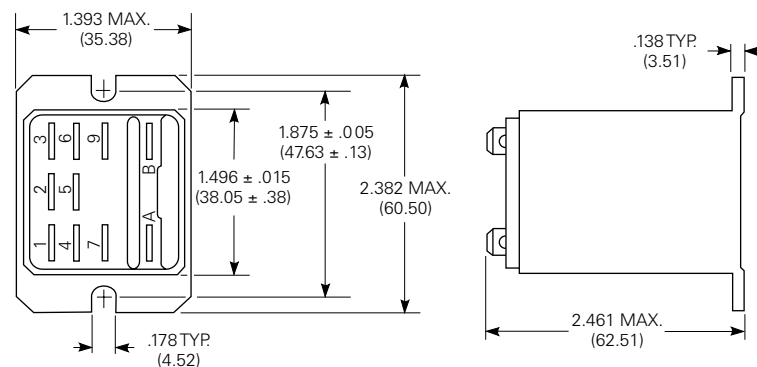
www.tycoelectronics.com
Technical support:
Refer to inside back cover.

Outline Dimensions

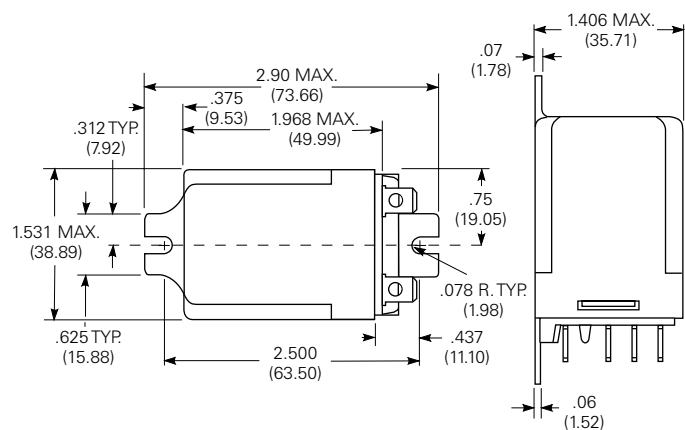
Plain Case



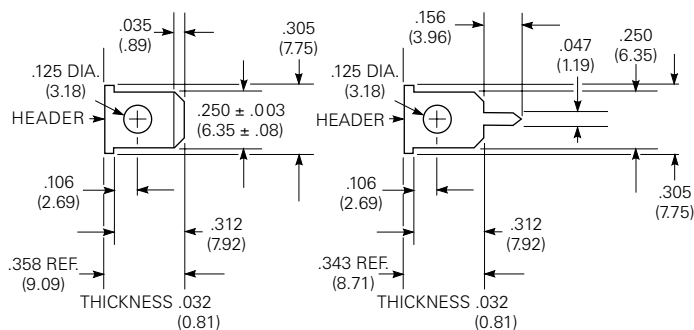
Top Flange Enclosure



Bracket Mount Case



**Terminal Dimensions
.250" (6.35mm) Quick
Connect/Solder**

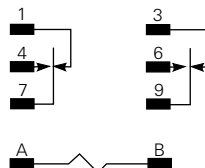
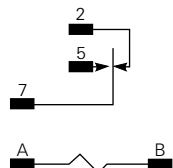


Printed Circuit

Wiring Diagrams

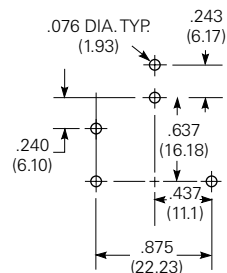
- 1 Form C
- 1 Form A (Delete 2)
- 1 Form B (Delete 5)

- 2 Form C
- 2 Form A (Delete 1 & 3)
- 2 Form B (Delete 4 & 6)

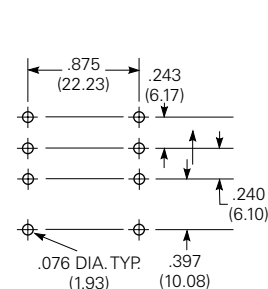


PC Board Layouts (Bottom Views)

1 Pole Model



2 Pole Model





Компания «ЭлектроПласт» предлагает заключение долгосрочных отношений при поставках импортных электронных компонентов на взаимовыгодных условиях!

Наши преимущества:

- Оперативные поставки широкого спектра электронных компонентов отечественного и импортного производства напрямую от производителей и с крупнейших мировых складов;
- Поставка более 17-ти миллионов наименований электронных компонентов;
- Поставка сложных, дефицитных, либо снятых с производства позиций;
- Оперативные сроки поставки под заказ (от 5 рабочих дней);
- Экспресс доставка в любую точку России;
- Техническая поддержка проекта, помощь в подборе аналогов, поставка прототипов;
- Система менеджмента качества сертифицирована по Международному стандарту ISO 9001;
- Лицензия ФСБ на осуществление работ с использованием сведений, составляющих государственную тайну;
- Поставка специализированных компонентов (Xilinx, Altera, Analog Devices, Intersil, Interpoint, Microsemi, Aeroflex, Peregrine, Syfer, Eurofarad, Texas Instrument, Miteq, Cobham, E2V, MA-COM, Hittite, Mini-Circuits, General Dynamics и др.);

Помимо этого, одним из направлений компании «ЭлектроПласт» является направление «Источники питания». Мы предлагаем Вам помощь Конструкторского отдела:

- Подбор оптимального решения, техническое обоснование при выборе компонента;
- Подбор аналогов;
- Консультации по применению компонента;
- Поставка образцов и прототипов;
- Техническая поддержка проекта;
- Защита от снятия компонента с производства.



Как с нами связаться

Телефон: 8 (812) 309 58 32 (многоканальный)

Факс: 8 (812) 320-02-42

Электронная почта: org@eplast1.ru

Адрес: 198099, г. Санкт-Петербург, ул. Калинина, дом 2, корпус 4, литера А.