

# 12000X778 series

High performance toggle switches • threaded bushing Ø 11.9 mm



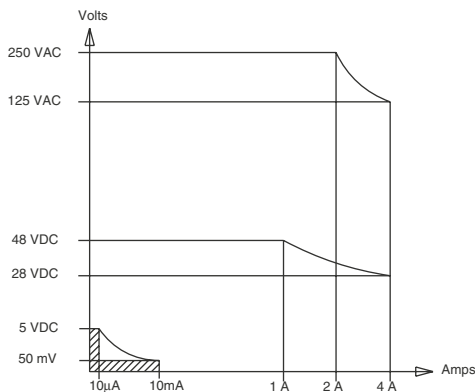
## DISTINCTIVE FEATURES

- CECC approved - conforms to MIL specifications
- Highly reliable contacts
- Pinned lever
- Double shell case for high mechanical strength and high electrical insulation
- Compact size



## ELECTRICAL SPECIFICATIONS

- Max. current/voltage rating with resistive load: 4 A 28 VDC
- Minimum load: 10 mA 50 mV, 10 µA 5 VDC  
When used above 300 mA 28 VDC, the gold plating is removed on contact areas and is considered only as a protection against oxidation during storage.
- Initial contact resistance: 10 mΩ max.
- Insulation resistance: 1,000 MΩ min. at 500 VDC
- Dielectric strength:  
1,000 Vrms 50 Hz min. between terminals  
2,000 Vrms 50 Hz min. between poles  
2,000 Vrms 50 Hz min. between terminals and frame
- Contact bounce: 2 ms max.
- Electrical life:  
- At 4 A 28 VDC : 20,000 cycles (10,000 for functions 5, 4-1R, 4-2R)  
- At low level (50 mV 10 mA):  
150,000 cycles (switches with 2 maintained positions)  
100,000 cycles (switches with 3 maintained positions)  
50,000 cycles (momentary functions 7, 8, 4-1R, 4-2R, 5)



The company reserves the right to change specifications without notice.



# 12000X778 series

High performance toggle switches • threaded bushing Ø 11.9 mm



## ENVIRONMENTAL SPECIFICATIONS

- Shock test: 50 g - 11 ms (IEC 68-2-27)
- Vibrations: 10-500 Hz - 10g (IEC68-2-6)
- Humidity test: 56 days, 93 % R.H., 40 °C (IEC 68-2-3)
- Salt spray test: 96 hours (IEC 68-2-11)
- Operating temperature: -40 °C to +85 °C (-40 °F to +185 °F)



## GENERAL SPECIFICATIONS

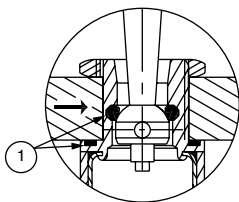
- Torque: 1.50 Nm (1.10 Ft.lb) max. applied to nut
- Panel thickness: 8 mm (.314) max. - 3 mm (.118) min.



## SEALING

- Front panel sealing by two O-rings  
Flatted bush for precise orientation
- Panel seal withstands 1 bar pressure and remains sealed even when the switch is operated.
- Epoxy sealed terminals
- Splash-proof case

→ FLAT



① - O-rings

## AGENCY APPROVALS



CECC 96201-005  
CECC 96201-008

Designed to MIL specifications

**Availability** : consult factory for details of approved models.  
**Marking** : to order switches marked CECC, complete appropriate box of ordering format.



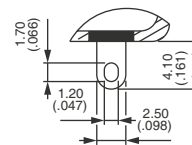
## MATERIALS

- Case: diallyphthalate (DAP) with plastic external shell (epoxy sealed)
- Actuator: brass, black chrome plated
- Bushing: brass, black chrome plated
- Contacts: solid rivet - gold plated silver/nickel alloy

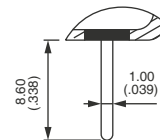
APEM products may be recycled at end-of-life for the re-claiming of valuable metal components.



## TERMINALS



Solder lugs

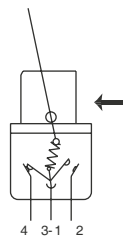


Straight PC

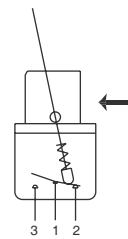


## ELECTRICAL FUNCTIONS

→ FLAT



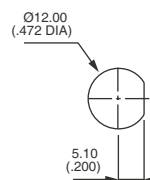
Function 6



Other functions



## PANEL CUT-OUT



# 12000X778 series

High performance toggle switches • threaded bushing Ø 11.9 mm



## BUILD YOUR PART NUMBER

**BASIC PART NUMBER**

12	—	—	—	—
SERIES	TERMINALS AND BUSHINGS	NUMBER OF POLES	ELECTRICAL FUNCTIONS	MOMENTARY FOR FUNCTION 4
	<p><b>1</b> Solder lug terminals</p> <p><b>2</b> Straight PC terminals</p> <p>All models with threaded bushing Ø 11.9 (15/32)</p>	<p><b>4</b> Double pole</p> <p><b>5</b> Three pole</p> <p><b>6</b> Four pole</p>	<p><b>6</b> ON - ON</p> <p><b>9</b> ON OFF ON</p> <p><b>7</b> MOM OFF MOM</p> <p><b>8</b> ON OFF MOM</p> <p><b>4</b> ON ON ON ON ON MOM Δ MOM ON MOM Δ</p> <p><b>5</b> - ON MOM</p> <p><b>Function 4</b> For 2 and 4 poles only. Δ Must not have blank in «momentary» box.</p>	<p><b>1R</b> ON ON MOM</p> <p><b>2R</b> MOM ON MOM</p> <p>For function 4 only. Leave blank for other functions.</p>

**OPTIONS**

—	—	—	—
FLUORESCENT TIP	LEVERS	X778	APPROVAL
<p><b>Blank</b> None</p> <p><b>-038</b> White fluorescent tip to lever</p>	<p><b>Blank</b> Standard lever</p> <p><b>-12</b> Short lever</p> <p>LOCKING LEVERS</p> <p><b>-1V</b> 1 locked position</p> <p><b>-2V</b> 2 locked positions</p> <p><b>-3V</b> 3 locked positions</p> <p>Other : see following pages.</p>	<p>High performance fully sealed black switches.</p>	<p><b>CECC</b> Availability: Consult factory for details of approved models.</p>



## ABOUT THIS SERIES

- ⚠ **Notice:** please note that not all combinations of above numbers are available. Refer to the following pages for further information.
- 💧 **Sealing boots** can be used to further protect the switches against dust and water. See "Sealing Boots" section of website.
- 🔩 **Mounting accessories:** standard hardware supplied with all models : 1 hex nut 14 mm (.551) across flats, part number U41.
- 🛡️ **Switch guards** are available to prevent inadvertent lever operation. See "Switch Guards" section of website.

# 12000X778 series

High performance toggle switches • threaded bushing Ø 11.9 mm

## SOLDER LUG TERMINALS - DOUBLE POLE



BASIC P/N	Angle of throw (A)	I	II	III
12146 X778	26°	ON	-	ON
12149 X778	20°	ON	OFF	ON
12147 X778	20°	MOM	OFF	MOM
12148 X778	20°	ON	OFF	MOM
12144 X778	20°	ON	ON	ON
12144-1R X778	20°	MOM	ON	ON
12144-2R X778	20°	MOM	ON	MOM
12145 X778	12°	-	ON	MOM

## SOLDER LUG TERMINALS - THREE POLE



BASIC P/N	Angle of throw (A)	I	II	III
12156 X778	26°	ON	-	ON
12159 X778	20°	ON	OFF	ON
12157 X778	20°	MOM	OFF	MOM
12158 X778	20°	ON	OFF	MOM

## SOLDER LUG TERMINALS - FOUR POLE



BASIC P/N	Angle of throw (A)	I	II	III
12166 X778	26°	ON	-	ON
12169 X778	20°	ON	OFF	ON
12167 X778	20°	MOM	OFF	MOM
12168 X778	20°	ON	OFF	MOM
12164 X778	20°	ON	ON	ON
12164-1R X778	20°	ON	ON	MOM
12164-2R X778	20°	MOM	ON	MOM

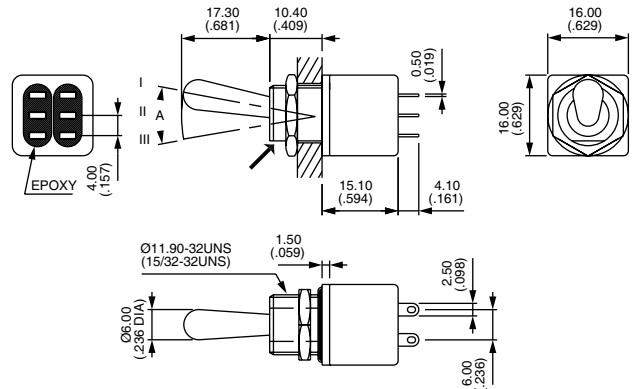
## STRAIGHT PC TERMINALS - DOUBLE POLE ▲



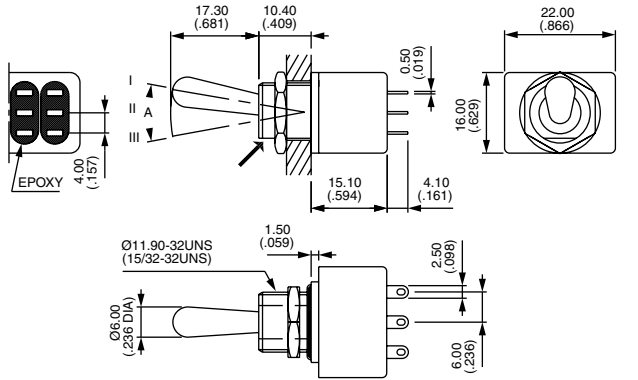
BASIC P/N	Angle of throw (A)	I	II	III
12246 X778	26°	ON	-	ON

→ FLAT

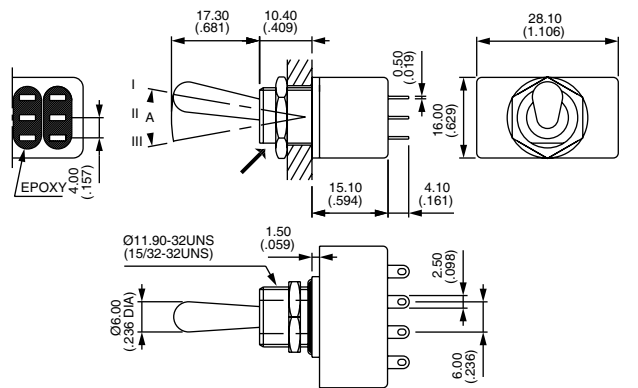
Shown with standard lever



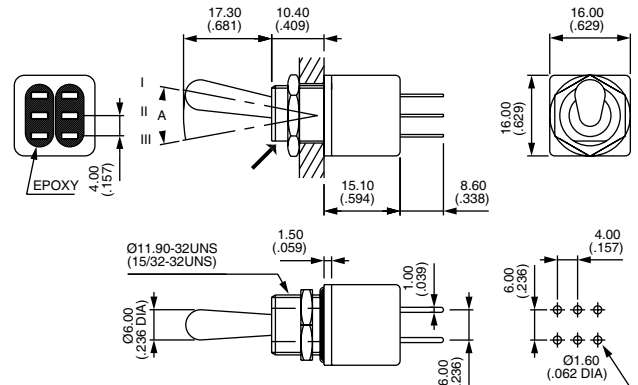
→ FLAT



→ FLAT



→ FLAT



# 12000X778 series

High performance toggle switches • threaded bushing Ø 11.9 mm

## STRAIGHT PC TERMINALS - THREE POLE ▲



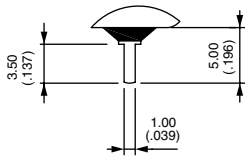
<b>BASIC P/N</b>	Angle of throw (A)	I	II	III
<b>12256 X778</b>	26°	ON	-	ON

## STRAIGHT PC TERMINALS - FOUR POLE ▲

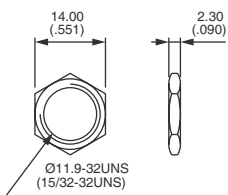


<b>BASIC P/N</b>	Angle of throw (A)	I	II	III
<b>12266 X778</b>	26°	ON	-	ON

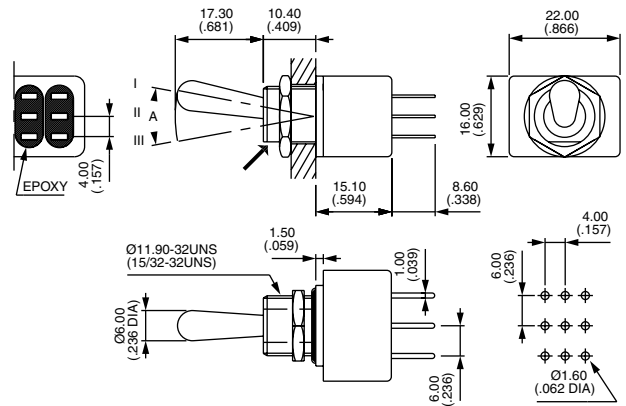
▲ 3.5 mm (.138) short terminals available on request for function 6. Standard for functions 9, 7, 8, 4 and 5.



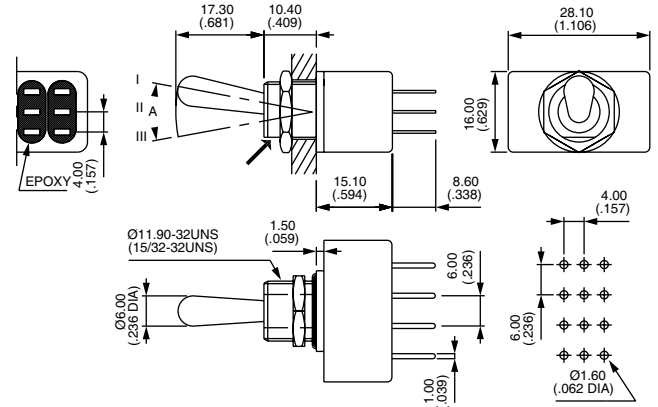
## STANDARD HARDWARE - HEX NUT - U41 - BLACK



→ FLAT



→ FLAT



# 12000X778 series

High performance toggle switches • threaded bushing Ø 11.9 mm

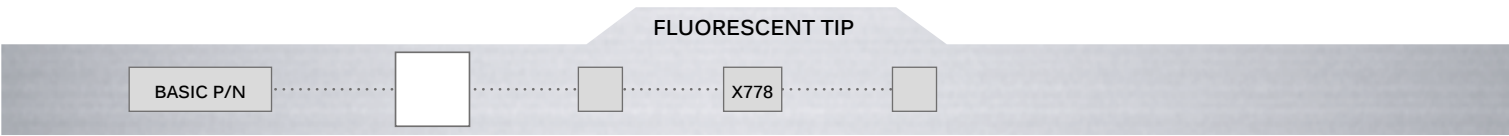


## POSITIONS AND CONNECTIONS

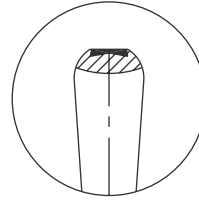
FUNCTION	LEVER POSITION AND CONNECTIONS			TERMINAL IDENTIFICATION	WIRING FOR 3-WAY SWITCHES (FUNCTION 4)
	I	II	III (FLAT)		
12146	ON  (1-3)-4 (5-7)-8	-	ON  (1-3)-2 (5-7)-6		<p>→EXTERNAL JUMPER (ADDED BY CUSTOMER)</p> <p>12144</p> <p>12144-1R</p> <p>12144-2R</p>
12147 12148 12149 12148CT	MOM ON ON MOM	OFF OFF OFF OFF	MOM MOM ON ON	<p>→ FLAT</p>	
12145	-	ON	MOM		
12144 12144-1R 12144-2R	ON MOM MOM	ON ON ON	ON ON MOM		
12156	ON  (1-3)-4 (5-7)-8 (9-11)-12	-	ON  (1-3)-2 (5-7)-6 (9-11)-10		
12166	ON  1A - 3A 1C - 3C 1E - 3E 1G - 3G	-	ON  1A - 2A 1C - 2C 1E - 2E 1G - 2G		<p>12164</p>
12164 12164-2R CT	ON MOM	ON ON	ON MOM		
	1A - 2A 1C - 2C 1E - 2E 1G - 2G	1A - 2A 1C - 3C 1E - 2E 1G - 3G	1A - 3A 1C - 3C 1E - 3E 1G - 3G		

# 12000X778 series

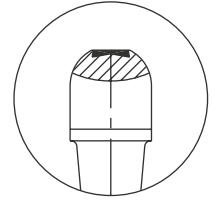
High performance toggle switches • threaded bushing Ø 11.9 mm



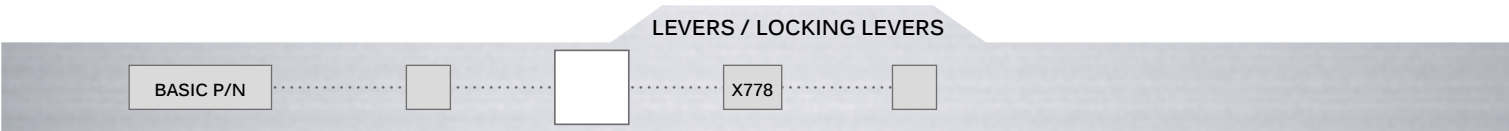
**Blank** None  
**038** White fluorescent tip. Becomes luminous when submitted to ultra-violet rays.



Standard lever

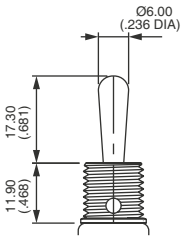


Locking lever

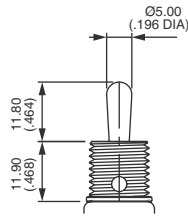


Dash compulsory before lever code.  
 Switch guards and sealing boot: see "Switch Guards" and "Sealing boots" sections of website.

## LEVERS

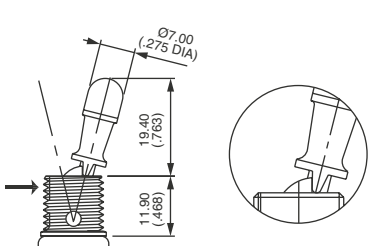


Blank Standard

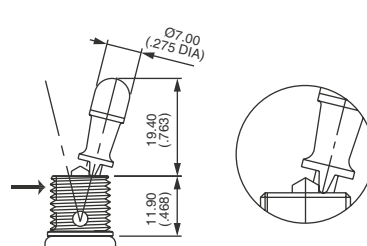


-12 Short lever

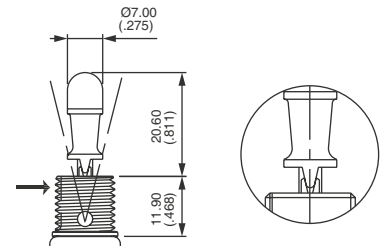
## LOCKING LEVERS



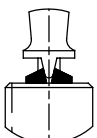
-1V  
 1 locked position (function 6)  
 Typical angle of throw : 26°



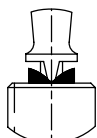
-2V  
 2 locked positions (function 6)  
 Typical angle of throw : 26°



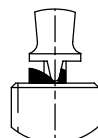
-3V  
 3 locked positions (functions 9 and 4)  
 Typical angle of throw : 20°



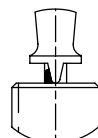
-4V  
 Functions 9 & 4



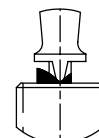
-5V  
 Functions 7 & 442R



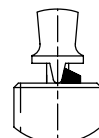
-7V  
 Function 8



-8V  
 Functions 9, 44 & 441R



-9V  
 Function 8

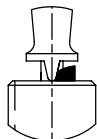
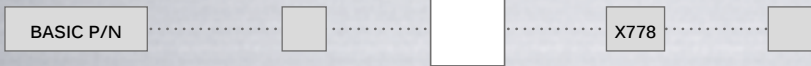


-11V  
 Functions 8, 9 & 44

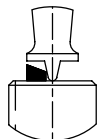
# 12000X778 series

High performance toggle switches • threaded bushing Ø 11.9 mm

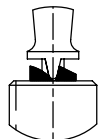
## LOCKING LEVERS (CONTINUED)



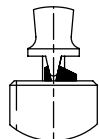
**-12V**  
Functions 7, 8 & 441R



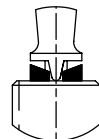
**-13V**  
Funct 5, 7 & 442R



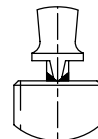
**-15V**  
Function 8



**-16V**  
Functions 4 & 9



**-17V**  
Functions 7 & 442R



**-20V**  
Functions 9 & 44

**Note:** -5V and -12V are not true locking levers: no pulling is required before actuation.

## AGENCY APPROVAL



- CECC** CECC 96201-005 and CECC 96201-008  
Availability: consult factory for details of approved models.  
Marking: to order switches marked CECC, complete above box with "CECC".
- Blank** No agency approval required.





Компания «ЭлектроПласт» предлагает заключение долгосрочных отношений при поставках импортных электронных компонентов на взаимовыгодных условиях!

Наши преимущества:

- Оперативные поставки широкого спектра электронных компонентов отечественного и импортного производства напрямую от производителей и с крупнейших мировых складов;
- Поставка более 17-ти миллионов наименований электронных компонентов;
- Поставка сложных, дефицитных, либо снятых с производства позиций;
- Оперативные сроки поставки под заказ (от 5 рабочих дней);
- Экспресс доставка в любую точку России;
- Техническая поддержка проекта, помощь в подборе аналогов, поставка прототипов;
- Система менеджмента качества сертифицирована по Международному стандарту ISO 9001;
- Лицензия ФСБ на осуществление работ с использованием сведений, составляющих государственную тайну;
- Поставка специализированных компонентов (Xilinx, Altera, Analog Devices, Intersil, Interpoint, Microsemi, Aeroflex, Peregrine, Syfer, Eurofarad, Texas Instrument, Miteq, Cobham, E2V, MA-COM, Hittite, Mini-Circuits, General Dynamics и др.);

Помимо этого, одним из направлений компании «ЭлектроПласт» является направление «Источники питания». Мы предлагаем Вам помощь Конструкторского отдела:

- Подбор оптимального решения, техническое обоснование при выборе компонента;
- Подбор аналогов;
- Консультации по применению компонента;
- Поставка образцов и прототипов;
- Техническая поддержка проекта;
- Защита от снятия компонента с производства.



#### Как с нами связаться

**Телефон:** 8 (812) 309 58 32 (многоканальный)

**Факс:** 8 (812) 320-02-42

**Электронная почта:** [org@eplast1.ru](mailto:org@eplast1.ru)

**Адрес:** 198099, г. Санкт-Петербург, ул. Калинина, дом 2, корпус 4, литера А.