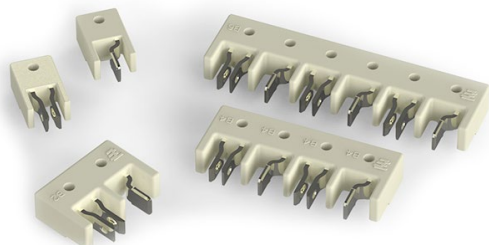


MINIATURE HERMAPHRODITIC CONNECTOR SYSTEM

Low profile board to board
and NEW wire to board connectors

Miniature Hermaphroditic Connector

The low profile SMT miniature hermaphroditic board-to-board connectors are designed to provide power between adjacent linear printed circuit boards. Ideal for use in compact spaces with features designed for vacuum pick and place that make it suitable for high volume automated manufacturing.



Electrical

- **Current Rating:** 3 A max.
- **Voltage Rating:** 300 VAC / DC (UL)
50 VAC / DC (TUV)
- **Dielectric Withstanding Voltage:** 1600 VAC

Mechanical

- **Operating Temperature:** -40°C to +105°C (UL)
-35°C to 65°C (TUV)

Materials

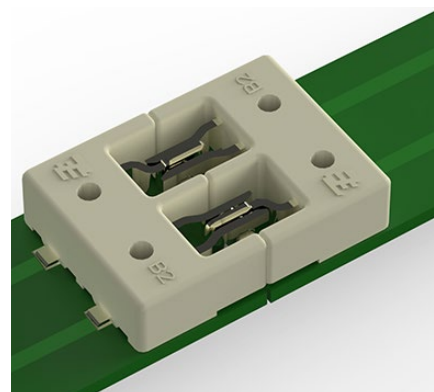
- **Housing:** High temperature thermoplastic UL 94V-0
- **Contacts:** Copper alloy, tin over nickel plated

Standards and Specifications

- **Product Specification:** 108-106050
- **Application Specification:** 114-106050
- **UL and cUL Recognized:** File No. E321453
- **EN 60838-1 & EN 60838-2-2:** Certificate No. 50280860

Product Offering

Part Number	Description	
1971567-1	2 position hermaphroditic board to board connector	
1971567-2	4 position hermaphroditic board to board connector	
1971567-3	6 position hermaphroditic board to board connector	
2213203-1	2 position mini hermaphroditic insert molded wire to board lead assembly (<i>mates with 1971567-1</i>)	
1971742-1	1 position blade board to board connector	Mating Pair
1971743-1	1 position receptacle board to board connector	
2213610-1	2 position mini hermaphroditic assy with posts	
2213610-2	4 position mini hermaphroditic assy with posts	
2213610-3	6 position mini hermaphroditic assy with posts	



Key Benefits

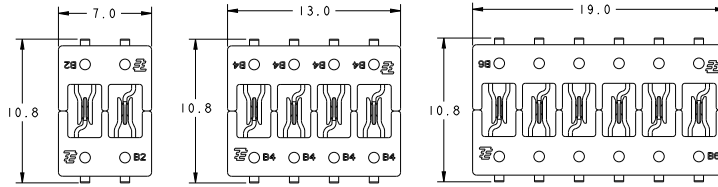
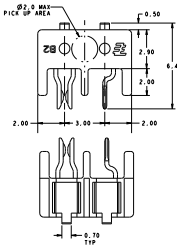
- Reduce assembly time, minimize inventory and lower production costs with connectors that mate and un-mate to themselves horizontally and vertically
- Connect data and control signals with 2, 4 and 6 position hermaphroditic versions
- Automate production with flat top surface for vacuum pick and place assembly
- Support re-flow processing with high temperature material

Applications

- Architectural and sign lighting
- Retail and display lighting
- Fluorescent LED retrofit lighting
- Cabinet or furniture lighting
- Commercial / residential cove lighting
- Access control equipment
- Thermostats
- Vending Machines

Dimensions

2, 4 and 6 position Mini Hermaphroditic Connectors¹

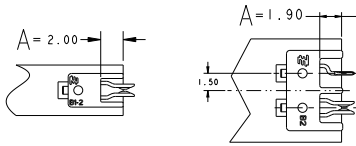


2, 4 and 6 position showing 2 mated parts

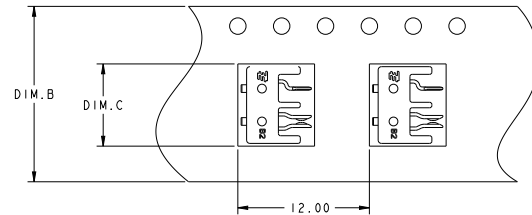
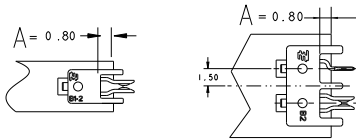
¹ All features and dimensions of 2, 4 and 6 position versions are the same except as shown

PCB Layout and Packaging Details

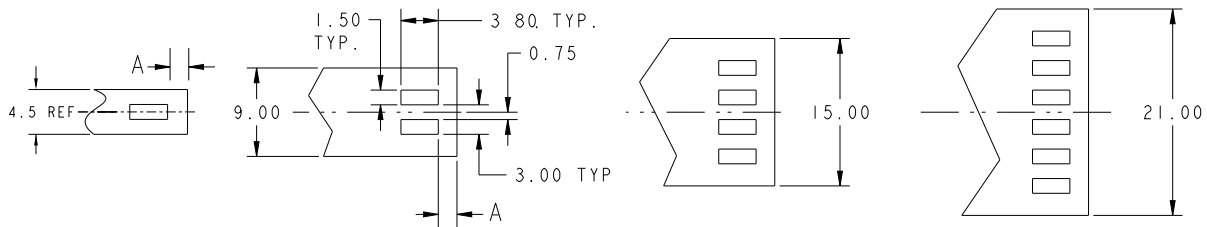
Horizontal mating and unmating only with 0.2 mm gap between PCBs



Horizontal and vertical mating and unmating with 2.4 mm gap between PCBs



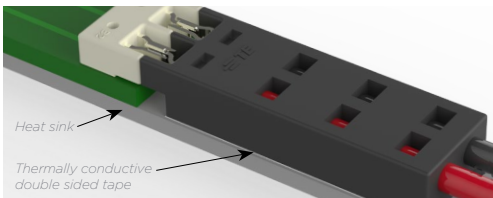
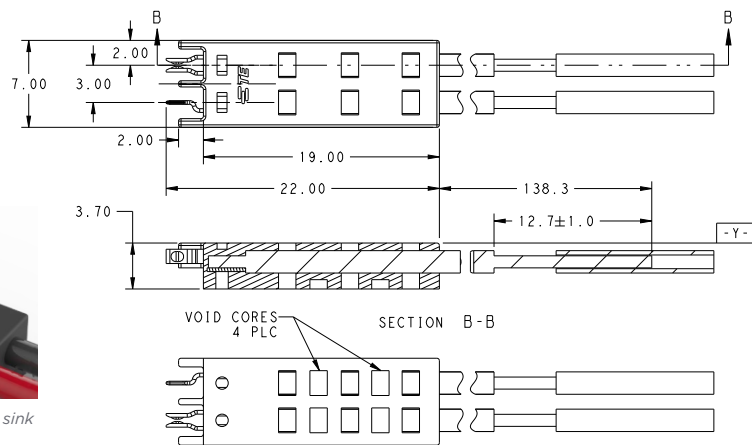
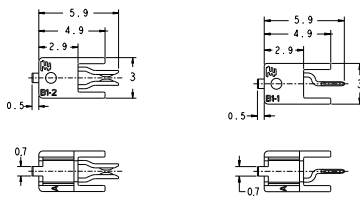
6P	19.30	32.00	1971567-3
4P	13.30	24.00	1971567-2
2P	7.30	16.00	1971567-1
POSITION	DIM.C	DIM.B	FOR P/N



1 position receptacle

1 position blade

2 position mini hermaphroditic wire to board lead assembly



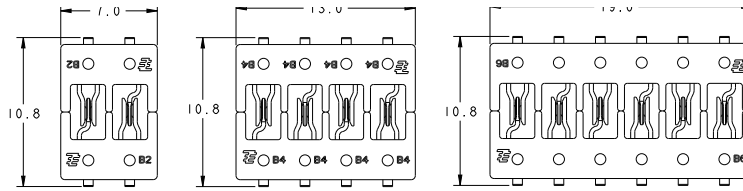
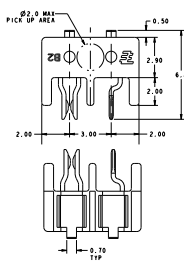
2 position wire to board lead assembly is secured to heat sink with thermally conductive double sided tape

Dimensions are shown in millimeters for reference purposes only. Specifications subject to change. Customer drawing should be used for all design activity.

Miniature Hermaphroditic Connector

Dimensions

2, 4 and 6 position Mini Hermaphroditic Connectors¹

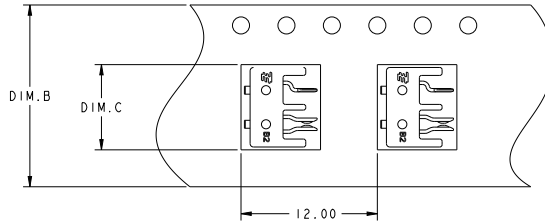
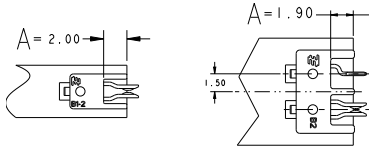


2, 4 and 6 position showing 2 mated parts

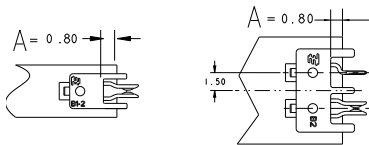
¹ All features and dimensions of 2, 4 and 6 position versions are the same except as shown

PCB Layout and Packaging Details

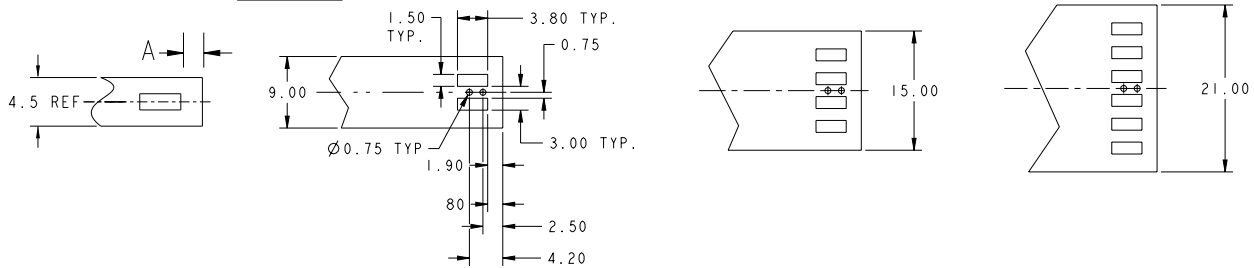
Horizontal mating and unmating only with 0.2 mm gap between PCBs



Horizontal and vertical mating and unmating with 2.4 mm gap between PCBs



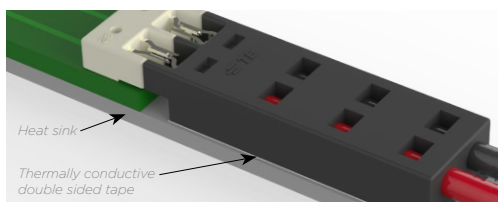
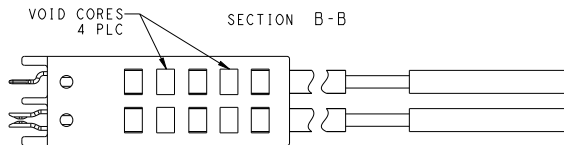
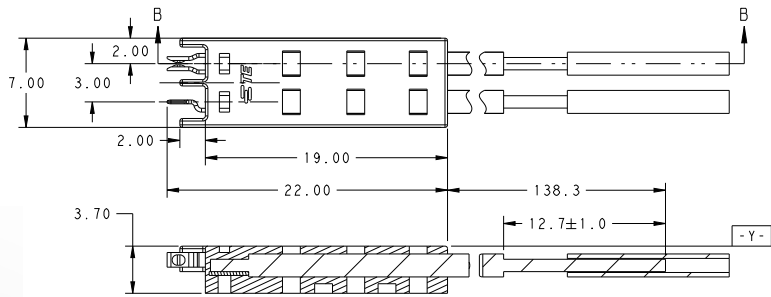
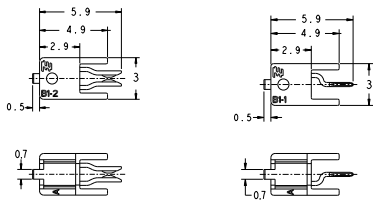
6P	19.30	32.00	2213610-3
4P	13.30	24.00	2213610-2
2P	7.30	16.00	2213610-1
POSITION	DIM.C	DIM.B	FOR P/N



1 position receptacle

1 position blade

2 position mini hermaphroditic wire to board lead assembly



2 position wire to board lead assembly is secured to heat sink with thermally conductive double sided tape

Dimensions are shown in millimeters for reference purposes only. Specifications subject to change. Customer drawing should be used for all design activity.

te.com

© 2017 TE Connectivity Ltd. Family of Companies. All Rights Reserved. TE, TE Connectivity, and the TE connectivity (logo) are trademarks of the TE Connectivity Ltd. family of companies. Other logos, product and Company names mentioned herein may be trademarks of their respective owners.
7-1773456-9 JN 2/2017

USA: +1 (800) 522-6752
Canada: +1 (905) 475-6222
Mexico: +52 (0) 55-1106-0800
Latin/S. America: +54 (0) 11-4733-2200
Germany: +49 (0) 6251-133-1999

UK: +44 (0) 800-267666
France: +33 (0) 1-3420-8686
The Netherlands: +31 (0) 73-6246-999
China: +86 (0) 400-820-6015



Компания «ЭлектроПласт» предлагает заключение долгосрочных отношений при поставках импортных электронных компонентов на взаимовыгодных условиях!

Наши преимущества:

- Оперативные поставки широкого спектра электронных компонентов отечественного и импортного производства напрямую от производителей и с крупнейших мировых складов;
- Поставка более 17-ти миллионов наименований электронных компонентов;
- Поставка сложных, дефицитных, либо снятых с производства позиций;
- Оперативные сроки поставки под заказ (от 5 рабочих дней);
- Экспресс доставка в любую точку России;
- Техническая поддержка проекта, помощь в подборе аналогов, поставка прототипов;
- Система менеджмента качества сертифицирована по Международному стандарту ISO 9001;
- Лицензия ФСБ на осуществление работ с использованием сведений, составляющих государственную тайну;
- Поставка специализированных компонентов (Xilinx, Altera, Analog Devices, Intersil, Interpoint, Microsemi, Aeroflex, Peregrine, Syfer, Eurofarad, Texas Instrument, Miteq, Cobham, E2V, MA-COM, Hittite, Mini-Circuits, General Dynamics и др.);

Помимо этого, одним из направлений компании «ЭлектроПласт» является направление «Источники питания». Мы предлагаем Вам помощь Конструкторского отдела:

- Подбор оптимального решения, техническое обоснование при выборе компонента;
- Подбор аналогов;
- Консультации по применению компонента;
- Поставка образцов и прототипов;
- Техническая поддержка проекта;
- Защита от снятия компонента с производства.



Как с нами связаться

Телефон: 8 (812) 309 58 32 (многоканальный)

Факс: 8 (812) 320-02-42

Электронная почта: org@eplast1.ru

Адрес: 198099, г. Санкт-Петербург, ул. Калинина, дом 2, корпус 4, литера А.