

Make terminal assemblies look professional while increasing wiring efficiency and facilitating troubleshooting. Marking systems can be used to mark terminal block tags, wire markers, shrink tubing, labels and signs. These universal plotters can be used to print many different manufactures products such as ABB, Allen Bradley, ContaClip, Entelec, Phoenix, Wago, Weidmuller, Wieland and more. PC software is used in conjunction with special fixtures to make production quality imprints on the VP100/500 plotter. The VS210 scriber is a self contained portable unit to print the same items on the go.

MARKING SYSTEMS

Marking Tags

The cost effective MT marking system provides quick and accurate identification. MT Push-On Marking Tags fit all Altech DIN Rail mount and panel mount terminal blocks. They can be inserted individually or as strips of 10 tags on terminal block assemblies for quick and easy marking.

MT Marking Tags are supplied blank or they can be ordered with a horizontal or vertical imprint. The standard tag color is white with black imprint. Tags can be ordered with up to 3 characters each. Imprints can be either consecutive or identical characters. MT tags, catalog numbers MT2-MT8 are supplied in packs of identical strips, 10 tags per strip. Catalog numbers MT10-MT15 are supplied in packs of identical strips, 5 tags per strip.

Group marker MTG1 is used for group identification and can be fixed on the end stop CA702.

When ordering specify strip marking as a suffix; i.e. MT2/H-1-10.

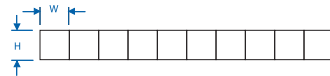
Warning Labels

These 5 position warning labels can be mounted on top of 8 mm Terminal Blocks. Besides giving visual identification, it also makes an entire DIN Rail Terminal Block assembly completely shock proof. SWL6 warning labels are suitable for CTS6U, CMDB6 and CDB6 series Terminal Blocks.

BLANK MARKING TAGS



Cat. No.	Std. Pk.		Dims	
	Strips	Tags	H	W
MT2	10	100	4.9	5.8
MT3	20	100	5.0	10.0
MT4	10	100	5.0	4.8
MT5	10	100	9.4	4.5
MT6	10	100	9.4	5.5
MT8	10	100	10.4	7.3
MT9	10	100	10.3	8.7
MT9F	10	10	10.3	90.0
MT10	20	100	10.4	9.4
MT12	20	100	10.4	11.3
MT15	20	100	10.4	14.3
MT20	20	100	4.9	20
MT25	20	100	4.9	25
MT2G	10	100	5.0	5.0



HORIZONTAL MARKING TAGS



Cat. No.	Std. Pk.		Dims	
	Strips	Tags	H	W
MT2/H	10	100	4.9	5.8
MT3/H	20	100	5.0	10.0
MT4/H	10	100	5.0	4.8
MT5/H	10	100	9.4	4.5
MT6/H	10	100	9.4	5.5
MT8/H	10	100	10.4	7.3
MT9/H	10	100	10.3	8.7
MT9F/H	10	10	10.3	90.0
MT10/H	20	100	10.4	9.4
MT12/H	20	100	10.4	11.3
MT15/H	20	100	10.4	14.3
MT20/H	20	100	4.9	20
MT25/H	20	100	4.9	25
MT2G/H	10	100	5.0	5.0



Consecutive Digits
(Specify decade)
Nos. 1-10, 11-20, etc. up to 100 *
Nos. 101-110, etc. up to 999 *



Identical Characters
(Specify digits, characters)
Nos. 1, 2, 3 etc. up to 999 *
Characters A, B, up to Z,
Symbols +, -, ⊕ *

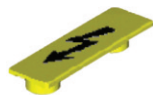
VERTICAL MARKING TAGS



Cat. No.	Std. Pk.		Dims	
	Strips	Tags	H	W
MT2/V	10	100	4.9	5.8
MT3/V	20	100	5.0	10.0
MT4/V	10	100	5.0	4.8
MT5/V	10	100	9.4	4.5
MT6/V	10	100	9.4	5.5
MT8/V	10	100	10.4	7.3
MT9/V	10	100	10.3	8.7
MT9F/V	10	10	10.3	90.0
MT10/V	20	100	10.4	9.4
MT12/V	20	100	10.4	11.3
MT15/V	20	100	10.4	14.3
MT20/V	20	100	4.9	20
MT25/V	20	100	4.9	25
MT2G/V	10	100	5.0	5.0

Consecutive Digits
(Specify decade)
Nos. 1-10, 11-20, etc. up to 100
Nos. 101-110, etc. up to 999

SWL6



Material:
Polyamide 6.6

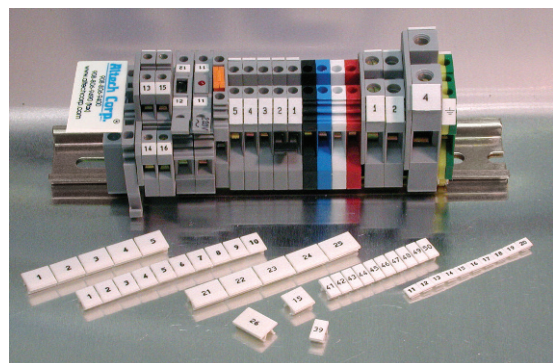
Dimensions
H x L x W:
4 x 39.5 x 27 mm

Cat. No.	Std. Pk.
SWL6	50

Suitable for: All DIN Rails



Group Marker, shown imprinted and attached to CA 702. Blank and custom printing available. Cat. No. MTG1



An Affordable Plotter Package

The New Basic CMPS Plotter Package

Altech part # 34130020

Comes with everything needed to begin printing MT5,6,8,10,12 and 15 tags.

- CMPS plotter
- Size: 17"x18"x4.9"
- CMPS software with cable
- 1 triple fixture for MT5, 6, 8, 10, 12 & 15
- 2 disposable pens



Call today!

For use with Altech & Connectwell Marking Tags Only



No Setup Fee
Stock to 2 weeks

HORIZONTAL



VERTICAL



STANDARD
Standard Pack 100 pcs.

Altech offers and stocks the following Horizontal and Vertical preprinted tags.

- Consecutive numbers 1-10, 11-20 etc. up to 191-200
- Consecutive numbers 1-100 and 101-200
- Common symbols +, -, $\frac{1}{2}$

CUSTOM

Custom tag printing is available with a TWO WEEK delivery to meet all specialized application needs. 500 tag min order please.

- To avoid mistakes, please send us your exact requirements in an excel spread sheet in the exact order that your tags need to be printed. Please configure your custom numbers all in column A in such that the first tag to be printed is in row 1. Any wanted blank tags should be left blank.
- Please label the spreadsheet in a way that shows label size and orientation. For example: MT2/H for a horizontally printed MT2 tag.
- Please supply a separate spreadsheet for each tag size or orientation.

Please contact us for special custom pricing for large quantity orders or a repeat blanket order.

Scriber VS210

The VS210 base unit is a stand-alone plotting system with an integral keyboard and display screen. The marker fixture, plotter pen, and the memory cassette have to be inserted in the base unit to make it operational. The base unit comes in an aluminum carrying case and includes the memory cassette and the power supply. A manual is available in English and Spanish.

The VS 210 can be used to produce labels of all types, with its fixture changeable in a matter of seconds.

The Vario VS 210 makes labeling easy. The menu-driven program guides you quickly and easily through all the steps.

It can be used at any time and in any place. Easily transported in its special case, the battery-operated (battery pack sold separately) VS 210 can be operated precisely where you need it. The spacious case provides enough room for the extensive accessories.

Plotter VP 500

The VP 500 base unit is an auxiliary plotter and has to be connected to a PC via a parallel port or USB connection. It is a high speed plotting device and enables plotting of different markers in one setting. The marker fixture and the plotter pen have to be inserted before commencing the plotting operation. The base unit is primarily controlled through a PC with the help of Vario Sign software (sold separately). Manual available in English and Spanish.

The special design of the VP 500 enables it to hold different markers from various manufacturers at the same time. It is also possible to write on relatively large markers with a maximum height 14 mm.

Fixtures

Fixtures are required for alignment of markers with respect to the plotter pen. Different marker fixtures can be mounted on the plotter bed of the VP 500 at the same time thereby reducing set up times. Fixtures for different markers from various manufacturers like Altech, Allen Bradley, Connectwell, ContaClip, Entelec, Weidmuller, Phoenix Contact, PTR, Wieland, Wago, Murrplastik, Partex, SES Sterling, etc. are available. For more information on ordering fixtures please contact Altech.

SCRIBER VS 210



- Identifiers for connectors, wires, cables and equipment
- Cable ties, shrink tubing, labels and signs of different sizes and materials, as well as customer-specific items.
- Size: 14.9"x7.5"x1.77"
- Weight: 6.6 lbs.

Ordering Information

BASE UNIT (includes power supply, memory cassette and carrying case)	3400003
STARTER KIT (includes cleaning unit, pen cleaners, felt pen, 0.25 mm plotter pen) and ink cartridges	3400001
FIXTURES (see page 115 or contact Altech for available manufactures)	3490xxxx
MEMORY CASSETTE	3550001
BATTERY PACK	3550000



Fixtures & Memory Cassette



Battery Pack



Plotter Pen, Ink Cartridge

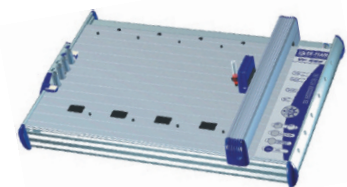
CMPS BASIC PLOTTER PACKAGE



Comes with everything needed to begin printing MT5,6,8,10,12 and 15 tags.

- CMPS plotter
- Size: 17"x18"x4.9"
- CMPS software with cable
- 1 triple fixture for MT5, 6, 8, 10, 12 & 15
- 2 disposable pens

PLOTTER VP 500

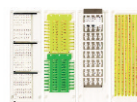


For marking:

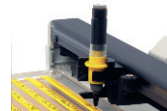
- Identifiers for connectors, wires, cables and equipment
- Cable ties, shrink tubing, labels and signs of different sizes and materials, as well as customer-specific items.
- Size: 26"x18"x4.9"

Ordering Information

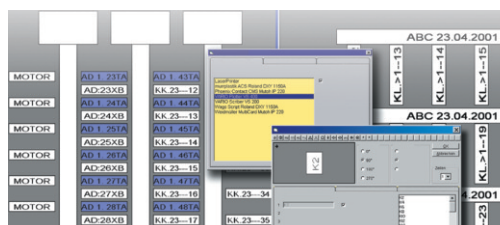
CMPS BASIC PLOTTER PACKAGE	34130020
VP 500 BASE UNIT (includes cable)	34000030
VARIO SIGN SOFTWARE (discounted price with plotter purchase)	34000022
STARTER KIT (includes cleaning unit, pen cleaners, felt pen, 0.25 mm plotter pen) and ink cartridges	3400001
VARIO SIGN SOFTWARE (sold independent of a plotter purchase)	34000020
SERVICE KIT (includes 4 seal bonnets and 10 priming print cards)	34000026
FIXTURES (see page 115 or contact Altech for available manufactures)	3490xxxx



Fixtures



Plotter Pen, Ink Cartridge

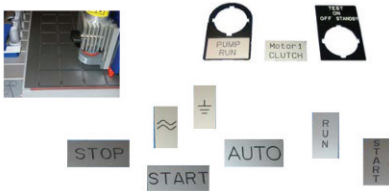


Vario Sign Software

Marking Systems

Engraver VE500

The engraving unit was specifically designed to be used with the VP500 and CMPS 500 plotters. Changing back and forth between the pen-plotter and the engraver is easy. The engraver is meant to engrave plastic signs on double sided material, pre-cut or blank sheets, for legend plates, push button inlays, etc. The engraver is programmed by the VarioSign software for ease of use and design flexibility.



ENGRAVER VE500



Ordering Information

VE500 ENGRAVER UNIT (VP500 REQUIRED)34000040

Engraving Needles

These engraving needles are to be used with the VE500 engraver. They have a 15° angle and are available in 6 tip widths or as a complete set.

Vacuum Cleaner Bag

Replacement bags for the VE500 engraver's vacuum cleaner

ENGRAVING NEEDLE



Ordering Information

Product	Width	Order No.
Engraving Needle	0.20mm	35010003
Engraving Needle	0.30mm	35010002
Engraving Needle	0.40mm	35010001
Engraving Needle	0.50mm	35010000
Engraving Needle	0.70mm	35010004
Engraving Needle	1.00mm	35010005
Engraving Set(0.20, 0.30, 0.40, 0.50, 0.70, 1.00mm)		35010006
Engraving Needle(0.20 mm cutter stainless steel)		35012033

VACUUM CLEANER BAG



Ordering Information

VACUUM CLEANER BAG, SET OF 535020000

Plotter Pens

These “tubular-nib” pens are suitable for Vario Scriber VS 200, Vario Plotter VP 500 and all current labeling and identification systems with HP penholders. They are available in six tip widths identified by body color - 0.18 mm, 0.25 mm, 0.35 mm, 0.50 mm, 0.70 mm, and 1.00 mm; *ink cartridge not supplied with pen*. Special variants for other systems are available on request. Specially designed pre-filled felt-tip pens are available in a set of 4 colors (black, blue, red and green) and 2 sizes - 0.3 and 0.7 mm.



“tubular-nib” pens,
6 sizes for black ink

Ink Cartridges

These are easy to insert “tubular-nib” pen cartridges containing special black ink suitable for marking, identifying and labeling various plastics. It is fast drying, smudge-proof, fade resistant, and resistant to chemicals when used on suitable plastic materials.



Disposable Pens

The disposable pens use the same special ink as used in the ink cartridges. They deliver the same outstanding durability and print quality as the standard plotter pens with the convenience of a disposable pen. These pre-filled pens allow for fast, efficient and cost effective printing without refilling ink or cleaning. They are available in three tip widths, 0.18 mm, 0.25 mm and 0.35 mm. ED type disposable pens use non-etching ink for easier handling. The ED pens should not be used on polycarbonate material.



Hand Pens

The hand pens use the same special ink, as used in cartridges, and delivers the same outstanding durability and print quality. They are used for additional identification and special labeling tasks and are available in four tip widths of 0.25mm, 0.35mm, 0.50 mm, and 0.70 mm. No ink included. Must order part 35100006.



Cleaning Unit

It is an easy-to-use cleaning unit developed specially for refillable EK Pens. The cleaning unit enables the refillable pens to be rinsed thoroughly while preventing skin contact with cleaning fluid or ink. The cleaning unit can be used for up to ten cleaning cycles. The necessary precautions must be taken when disposing of cleaning fluid, the cleaning unit can be reused.



Pen Cleaner

This cleaning solution comes in easy to handle cartridges and is used in conjunction with the cleaning unit. A standard pack consists of two pen cleaner cartridges. Cleaning can be performed on standard refillable pens only.



Adapter

This adapter allows the user of Sharpie™ Ultra Fine felt tip pens instead of standard plotter pens.



EK Plotter Pen

Ink Color	Body Color	Tip Width	Order No.
black	red	0.18 mm	35001018
black	white	0.25 mm	35001025
black	yellow	0.35 mm	35001035
black	brown	0.50 mm	35001050
black	blue	0.70 mm	35001070
black	orange	1.00 mm	35001100

EK Ink Cartridge

Description	Order No.
5 pieces, Black, 1 ml. each	35100006

EK Disposable Plotter Pen

Ink Color	Body Color	Tip Width	Order No.
black	red	0.18 mm	35003018
black	white	0.25 mm	35003025
black	yellow	0.35 mm	35003035
black / ED*	red	0.18 mm	35003118
black / ED*	white	0.25 mm	35003125
black / ED*	yellow	0.35 mm	35003135

*Not for printing on polycarbonate material.

EK Hand Pen

Ink Color	Body Color	Tip Width	Order No.
black	white	0.25 mm	35002025
black	yellow	0.35 mm	35002035
black	brown	0.50 mm	35002050
black	blue	0.70 mm	35002070

EK Cleaning Unit (empty)	35100009
---------------------------------	----------

EK Pen Cleaner (2 pieces, 2x10 ml.)	35100008
--	----------

EK Cleaning Set	35100010
------------------------	----------

(includes cleaning unit and pen cleaner)

Adapter for an Ultra Fine Sharpie™	35000501
---	----------

Plotter Pen Handling and Care

Handling and care of the EK-Team plotter pens for the universal EK-Team marking system.

For the state of the art universal marking system by EK-team, the manufacture is supplying a fast drying and etching ink that is required for marking plastic material within the control and automation industry. Due to these special properties of the ink, these plotter pens require much more care than a regular marking pen. Therefore EK-Team designed some helpful tools to keep your EK-team plotter pen in tip top shape.

1 Recovery and Storage Stand

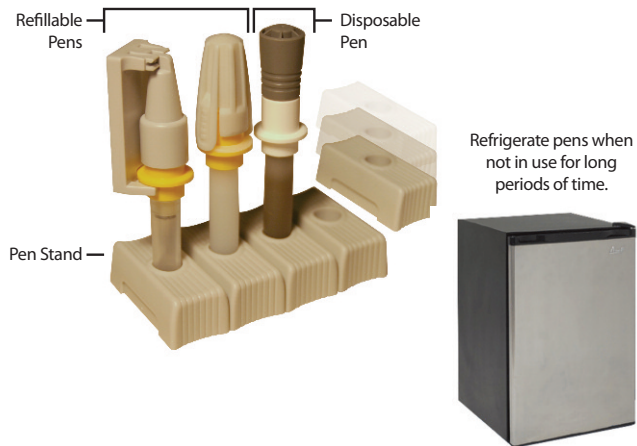
This stand is designed to keep the plotter pen in an upright position, when not used with the marking system.

The upright position allows the plotter pen to recover and to be properly stored. It is recommended to store plotter pens that will be idle for a few hours in a dry and cool location, preferably in the refrigerator.

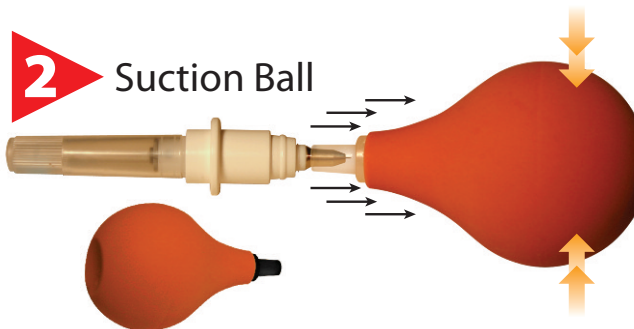
The recovery and storage stand accommodates easy storage and handling.

Call Altech for your free recovery and storage stand.

Cat. No. 35000100



2 Suction Ball



The "suction ball" is a helpful tool to bring a slightly clogged disposable or refillable plotter pen back to life.

The suction can unclog a slightly clogged plotter pen from the vacuum created within the "ball".

This additional tool can be very helpful in addition to the already available cleaning kit (Cat. No. 35100010) for the refillable plotter pens.

5 replacement tips are included with each suction ball.

Cat. No. 35100013

3 Pen Cleaning

CLEANING UNIT

It is an easy-to-use cleaning unit developed specially for refillable pens. The cleaning unit enables the pens to be rinsed thoroughly while preventing skin contact with cleaning fluid or ink. The cleaning unit can be used for up to ten cleaning cycles. The necessary precautions must be taken when disposing of cleaning fluid, the cleaning unit can be reused.

PEN CLEANER

This cleaning solution comes in easy to handle cartridges and is used in conjunction with the cleaning unit. A standard pack consists of two pen cleaner cartridges. Cleaning can be performed on standard refillable pens only.

Cleaning Set Cat. No. 35100010



Description	Part No.
Altech	
Altech MT2G	34130010
Altech MT 2n - MT 4n, MT 7.5, MT 20, MT 25	34902081
Altech MT 5 - MT 15	34902001
Altech Group marker G1, G2, G4	34902080
Altech MT9	34902057
ABB / Entrelec	
ABB Entrelec universal - RC/RCT quarter size	34902063
ABB Entrelec RC 510A, 610A, 810A	34902114
ABB Entrelec RC 510B, 610B, 810B"	34902102
ABB Entrelec RB-RBP 5-12	34902086
ABB Entrelec BA 5-50	34902100
ABB Entrelec PIB	34902101
ABB Entrelec RCCV	34902038
ABB Entrelec BS / ILS / ILS-H	34902106
Set of sticky pads (8 pcs) for RC/RCT	34910000
Allen Bradley / Woertz	
Allen Bradley Universal W4 SERIES OLD AB WORTZ & S.S.	34902046
Weidmüller / Rockwell (Allen Bradley)	
Weidmüller MultiCard Universal (M5X8)	34902045
Weidmüller MultiCard SF4-6	34902044
Set of sticky pads (6 pcs) for Multicard Universal	34910001
Conta Clip	
SB5, SB6 BSTR10.12	34902002
SB8/10	34902003
Phoenix	
Phoenix Contact ZBM	34902039
Phoenix Contact ZB	34902047
Phoenix Contact ZBFM	34902049
Phoenix Contact ZBF, ZBN	34900050
Phoenix Contact BNZ	34902051
Phoenix Contact BN-ZB	34902052
Phoenix Contact SS-ZB	34902053
Phoenix Contact LBHZ	34902054
Phoenix Contact PAB	34902055
Phoenix Contact GPE	34902071
Phoenix Contact GPE	34902106
Wago	
WAGO WMB 4/4,2/5	34902041
WAGO WSB 4	34902074
WAGO WSB 5/5,2	34902075
WAGO WSB mini	34902076
WAGO Group marker carrier	34902078
WAGO Marking Strip	34902087
WAGO Marker tags	34902094
WAGO WTB	34902096
WAGO WCB	34902097
WAGO WMB inline	34902098
WAGO 210-345	34902106
Set of sticky pads (12 pcs) for Top Job (Marking Strip)	34910002
Weidmüller / Rockwell (Allen Bradley)	
Weidmüller MultiCard Universal	34902045
Weidmüller MultiCard SF4-6	34902044
Set of sticky pads (6 pcs) for Multicard Universal	34910001
Wieland	
Wieland Universal	34902043
Wieland BZ/WKF 1,5 04.243.2053.0	34902047
Wieland BZ/WKF 1,5/10 Z4.243.2053.0	34902049
Wieland Steierform 6 x 15, 10 x 20	34902106

VE500 and CMPS 500 Engraving Fixtures

EK-TEAM	
Universal engraving and plot support plate half size (A4)	34902106
Universal engraving and plot support plate full size (A3)	34902107
Universal engraving and plot support plate 30x100 ninefold	34902115
Universal engraving and plot support plate 60x100 fourfold	34902116
Universal engraving and plot support plate 90x100 threefold	34902117

CUSTOM FIXTURES AND OTHER MANUFACTURERES ARE AVAILABLE
Contact Altech for Pricing (not in Price Book)

*CMPS 500 only works with Altech fixtures and EK Team engraving fixtures.



Компания «ЭлектроПласт» предлагает заключение долгосрочных отношений при поставках импортных электронных компонентов на взаимовыгодных условиях!

Наши преимущества:

- Оперативные поставки широкого спектра электронных компонентов отечественного и импортного производства напрямую от производителей и с крупнейших мировых складов;
- Поставка более 17-ти миллионов наименований электронных компонентов;
- Поставка сложных, дефицитных, либо снятых с производства позиций;
- Оперативные сроки поставки под заказ (от 5 рабочих дней);
- Экспресс доставка в любую точку России;
- Техническая поддержка проекта, помощь в подборе аналогов, поставка прототипов;
- Система менеджмента качества сертифицирована по Международному стандарту ISO 9001;
- Лицензия ФСБ на осуществление работ с использованием сведений, составляющих государственную тайну;
- Поставка специализированных компонентов (Xilinx, Altera, Analog Devices, Intersil, Interpoint, Microsemi, Aeroflex, Peregrine, Syfer, Eurofarad, Texas Instrument, Miteq, Cobham, E2V, MA-COM, Hittite, Mini-Circuits, General Dynamics и др.);

Помимо этого, одним из направлений компании «ЭлектроПласт» является направление «Источники питания». Мы предлагаем Вам помощь Конструкторского отдела:

- Подбор оптимального решения, техническое обоснование при выборе компонента;
- Подбор аналогов;
- Консультации по применению компонента;
- Поставка образцов и прототипов;
- Техническая поддержка проекта;
- Защита от снятия компонента с производства.



Как с нами связаться

Телефон: 8 (812) 309 58 32 (многоканальный)

Факс: 8 (812) 320-02-42

Электронная почта: org@eplast1.ru

Адрес: 198099, г. Санкт-Петербург, ул. Калинина, дом 2, корпус 4, литера А.