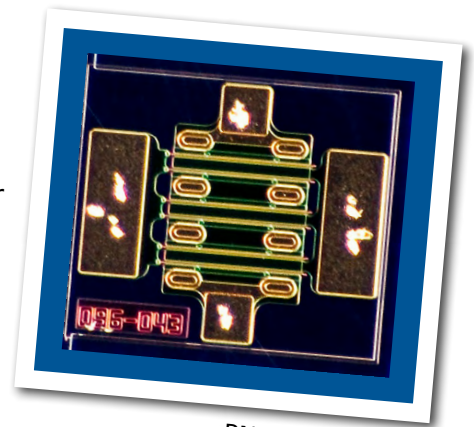


# CGH60008D

**8 W, 6.0 GHz, GaN HEMT Die**

Cree's CGH60008D is a gallium nitride (GaN) High Electron Mobility Transistor (HEMT). GaN has superior properties compared to silicon or gallium arsenide, including higher breakdown voltage, higher saturated electron drift velocity, and higher thermal conductivity. GaN HEMTs offer greater power density and wider bandwidths compared to Si and GaAs transistors.



PN: CGH60008D

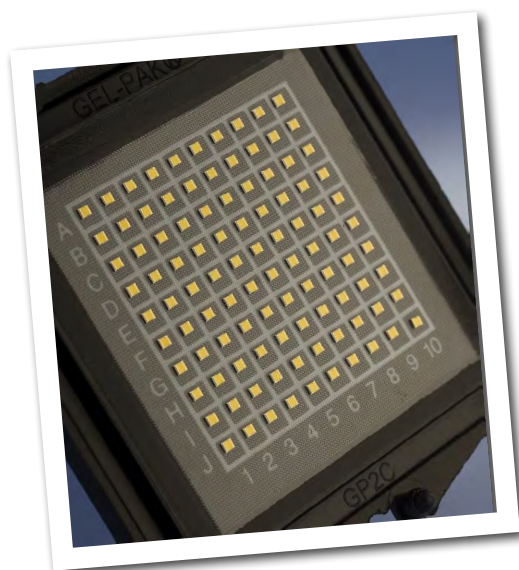
## FEATURES

- 15 dB Typical Small Signal Gain at 4 GHz
- 12 dB Typical Small Signal Gain at 6 GHz
- 8 W Typical  $P_{SAT}$  @ 28 V Operation
- 5 W Typical  $P_{SAT}$  @ 20 V Operation
- High Breakdown Voltage
- High Temperature Operation
- Up to 6 GHz Operation
- High Efficiency

## APPLICATIONS

- 2-Way Private Radio
- Broadband Amplifiers
- Cellular Infrastructure
- Test Instrumentation
- Class A, AB, Linear amplifiers suitable for OFDM, W-CDMA, EDGE, CDMA waveforms

## Packaging Information



- Bare die are shipped in Gel-Pak® containers.
- Non-adhesive tacky membrane immobilizes die during shipment.

Large Signal Models Available for SiC & GaN



## Absolute Maximum Ratings (not simultaneous) at 25 °C

Parameter	Symbol	Rating	Units	Conditions
Drain-source Voltage	$V_{DS}$	84	VDC	25 °C
Gate-source Voltage	$V_{GS}$	-10, +2	VDC	25 °C
Storage Temperature	$T_{STG}$	-65, +150	°C	
Operating Junction Temperature	$T_J$	225	°C	
Maximum Forward Gate Current	$I_{GMAX}$	2.1	mA	25 °C
Maximum Drain Current <sup>1</sup>	$I_{DMAX}$	0.75	A	25 °C
Thermal Resistance, Junction to Case (packaged) <sup>2</sup>	$R_{\theta JC}$	8.9	°C/W	
Thermal Resistance, Junction to Case (die only)	$R_{\theta JC}$	5.7	°C/W	85 °C
Mounting Temperature (30 seconds)	$T_S$	320	°C	30 seconds

Note<sup>1</sup> Current limit for long term, reliable operation

Note<sup>2</sup> Eutectic die attach using 80/20 AuSn mounted to a 20 mil thick Cu carrier.

## Electrical Characteristics (Frequency = 4 GHz unless otherwise stated; $T_C = 25 °C$ )

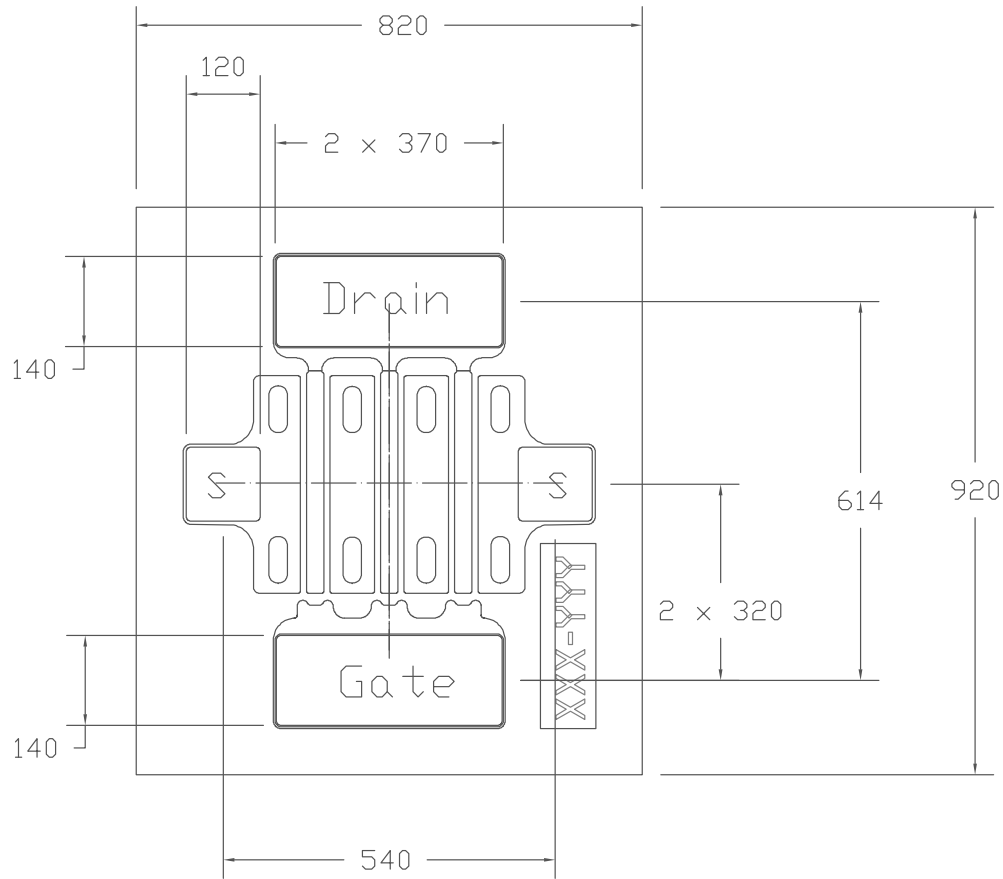
Characteristics	Symbol	Min.	Typ.	Max.	Units	Conditions
<b>DC Characteristics</b>						
Gate Threshold Voltage	$V_{GS(TH)}$	-3.8	-3.0	-2.3	V	$V_{DS} = 10 V, I_D = 2.1 mA$
Gate Quiescent Voltage	$V_{GS(Q)}$	-	-2.7	-	V <sub>DC</sub>	$V_{DD} = 28 V, I_{DQ} = 60 mA$
Drain Current	$I_{DS}$	1.75	2.1	-	A	$V_{DS} = 6.0 V, V_{GS} = 2.0 V$
Drain-Source Breakdown Voltage	$V_{BD}$	120	-	-	V	$V_{GS} = -8 V, I_D = 2.1 mA$
On Resistance	$R_{ON}$	-	1.6	-	Ω	$V_{DS} = 0.1 V$
Gate Forward Voltage	$V_{G-ON}$	-	1.9	-	V	$I_{GS} = 2.1 mA$
<b>RF Characteristics</b>						
Small Signal Gain	$G_{SS}$	-	15	-	dB	$V_{DD} = 28 V, I_{DQ} = 60 mA$
Saturated Power Output <sup>1</sup>	$P_{SAT}$	-	8	-	W	$V_{DD} = 28 V, I_{DQ} = 60 mA$
Drain Efficiency <sup>2</sup>	$\eta$	-	65	-	%	$V_{DD} = 28 V, I_{DQ} = 60 mA, P_{SAT}$
Intermodulation Distortion	IM3	-	-30	-	dBc	$V_{DD} = 28 V, I_{DQ} = 60 mA,$ $P_{OUT} = 8 W PEP$
Output Mismatch Stress	VSWR	-	-	10 : 1	Ψ	No damage at all phase angles, $V_{DD} = 28 V, I_{DQ} = 60 mA,$ $P_{OUT} = 8 W CW$
<b>Dynamic Characteristics</b>						
Input Capacitance	$C_{GS}$	-	2.5	-	pF	$V_{DS} = 28 V, V_{GS} = -8 V, f = 1 MHz$
Output Capacitance	$C_{DS}$	-	0.5	-	pF	$V_{DS} = 28 V, V_{GS} = -8 V, f = 1 MHz$
Feedback Capacitance	$C_{GD}$	-	0.1	-	pF	$V_{DS} = 28 V, V_{GS} = -8 V, f = 1 MHz$

### Notes:

<sup>1</sup>  $P_{SAT}$  is defined as  $I_G = 0.2 mA$ .

<sup>2</sup> Drain Efficiency =  $P_{OUT} / P_{DC}$

## DIE Dimensions (units in microns)



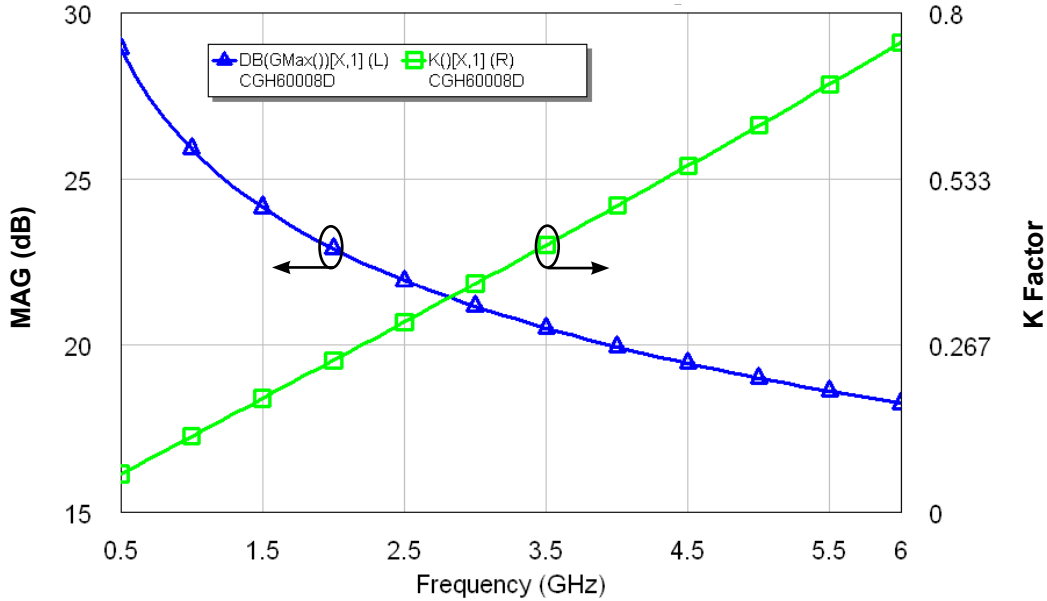
Overall die size 820 x 920 (+0/- 50) microns, die thickness 100 (+/- 10) microns.  
All Gate and Drain pads must be wire bonded for electrical connection.

### Assembly Notes:

- Recommended solder is AuSn (80/20) solder. Refer to Cree's website for the Eutectic Die Bond Procedure application note at [http://www.cree.com/products/wireless\\_documents.asp](http://www.cree.com/products/wireless_documents.asp)
- Vacuum collet is the preferred method of pick-up.
- The backside of the die is the Source (ground) contact.
- Die back side gold plating is 5 microns thick minimum.
- Thermosonic ball or wedge bonding are the preferred connection methods.
- Gold wire must be used for connections.
- Use the die label (XXX-YYY) for correct orientation.

## Typical Performance

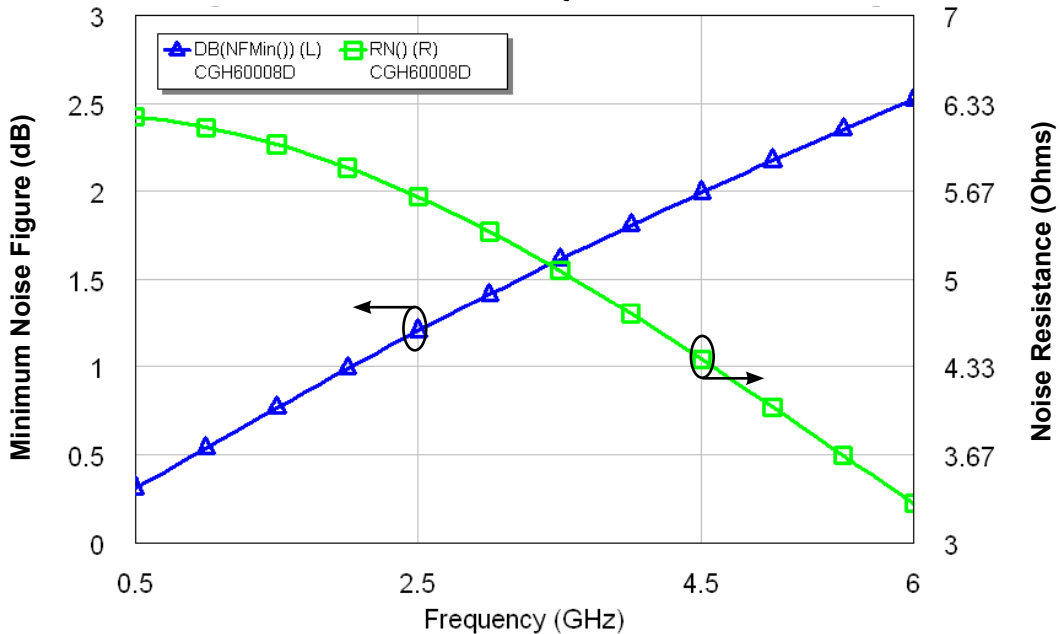
**Simulated Maximum Available Gain and K Factor of the CGH60008D**  
 $V_{DD} = 28\text{ V}$ ,  $I_{DQ} = 100\text{ mA}$



Intrinsic die parameters - reference planes at centers of gate and drain bonding pads. No wire bonds assumed.

## Typical Noise Performance

**Simulated Minimum Noise Figure and Noise Resistance vs Frequency of the CGH60008D**  
 $V_{DD} = 28\text{ V}$ ,  $I_{DQ} = 100\text{ mA}$





**Typical Die S-Parameters (Small Signal,  $V_{DS} = 28\text{ V}$ ,  $I_{DQ} = 60\text{ mA}$ , magnitude / angle)**

Frequency	Mag S11	Ang S11	Mag S21	Ang S21	Mag S12	Ang S12	Mag S22	Ang S22
500 MHz	0.949	-88.97	19.19	130.14	0.025	40.93	0.457	-46.50
600 MHz	0.940	-99.46	17.32	124.14	0.027	35.09	0.426	-51.93
700 MHz	0.933	-108.14	15.69	119.09	0.028	30.19	0.400	-56.47
800 MHz	0.928	-115.36	14.27	114.78	0.029	26.04	0.379	-60.31
900 MHz	0.923	-121.43	13.05	111.05	0.030	22.47	0.363	-63.61
1.0 GHz	0.920	-126.58	12.00	107.79	0.031	19.36	0.350	-66.51
1.1 GHz	0.917	-130.99	11.08	104.89	0.031	16.62	0.340	-69.08
1.2 GHz	0.914	-134.80	10.28	102.28	0.032	14.18	0.332	-71.39
1.3 GHz	0.913	-138.12	9.58	99.92	0.032	11.97	0.327	-73.50
1.4 GHz	0.911	-141.05	8.96	97.76	0.032	9.97	0.323	-75.45
1.5 GHz	0.910	-143.64	8.41	95.76	0.032	8.12	0.320	-77.26
1.6 GHz	0.909	-145.94	7.92	93.89	0.032	6.42	0.319	-78.96
1.7 GHz	0.908	-148.02	7.48	92.15	0.032	4.83	0.319	-80.57
1.8 GHz	0.908	-149.89	7.08	90.50	0.033	3.34	0.319	-82.10
1.9 GHz	0.907	-151.59	6.72	88.93	0.033	1.93	0.321	-83.55
2.0 GHz	0.907	-153.14	6.39	87.44	0.033	0.60	0.323	-84.95
2.1 GHz	0.907	-154.56	6.09	86.02	0.033	-0.67	0.325	-86.29
2.2 GHz	0.906	-155.86	5.82	84.65	0.033	-1.88	0.329	-87.59
2.3 GHz	0.906	-157.07	5.56	83.33	0.033	-3.04	0.332	-88.84
2.4 GHz	0.906	-158.19	5.33	82.06	0.033	-4.16	0.336	-90.06
2.5 GHz	0.906	-159.24	5.11	80.82	0.033	-5.23	0.340	-91.24
2.6 GHz	0.906	-160.21	4.91	79.62	0.033	-6.28	0.344	-92.39
2.7 GHz	0.906	-161.12	4.72	78.45	0.032	-7.29	0.349	-93.51
2.8 GHz	0.906	-161.98	4.55	77.31	0.032	-8.27	0.354	-94.60
2.9 GHz	0.906	-162.79	4.38	76.20	0.032	-9.22	0.359	-95.66
3.0 GHz	0.906	-163.55	4.23	75.11	0.032	-10.15	0.364	-96.70
3.2 GHz	0.906	-164.95	3.95	73.01	0.032	-11.94	0.375	-98.72
3.4 GHz	0.907	-166.23	3.70	70.97	0.032	-13.66	0.386	-100.66
3.6 GHz	0.907	-167.38	3.48	69.01	0.032	-15.31	0.397	-102.54
3.8 GHz	0.908	-168.44	3.28	67.10	0.032	-16.90	0.408	-104.34
4.0 GHz	0.908	-169.43	3.10	65.24	0.031	-18.44	0.420	-106.09
4.2 GHz	0.909	-170.34	2.93	63.43	0.031	-19.93	0.432	-107.79
4.4 GHz	0.909	-171.19	2.78	61.67	0.031	-21.38	0.443	-109.44
4.6 GHz	0.910	-171.99	2.64	59.94	0.031	-22.79	0.455	-111.05
4.8 GHz	0.910	-172.74	2.51	58.25	0.030	-24.17	0.467	-112.61
5.0 GHz	0.911	-173.46	2.39	56.59	0.030	-25.51	0.478	-114.14
5.2 GHz	0.912	-174.14	2.28	54.97	0.030	-26.82	0.489	-115.63
5.4 GHz	0.912	-174.79	2.18	53.37	0.030	-28.09	0.500	-117.08
5.6 GHz	0.913	-175.41	2.09	51.81	0.029	-29.34	0.511	-118.50
5.8 GHz	0.914	-176.01	2.00	50.27	0.029	-30.57	0.522	-119.89
6.0 GHz	0.914	-176.58	1.92	48.75	0.029	-31.76	0.533	-121.25

Contact Cree to receive this s-parameter file in ".s2p" format at [Wireless\\_Sales@cree.com](mailto:Wireless_Sales@cree.com)



**Typical Die S-Parameters (Small Signal,  $V_{DS} = 28\text{ V}$ ,  $I_{DQ} = 120\text{ mA}$ , magnitude / angle)**

Frequency	Mag S11	Ang S11	Mag S21	Ang S21	Mag S12	Ang S12	Mag S22	Ang S22
500 MHz	0.938	-100.12	21.07	124.88	0.030	35.53	0.466	-62.41
600 MHz	0.929	-110.15	18.68	119.23	0.032	30.01	0.428	-69.18
700 MHz	0.923	-118.17	16.69	114.61	0.034	25.53	0.399	-74.78
800 MHz	0.918	-124.66	15.03	110.76	0.035	21.80	0.376	-79.46
900 MHz	0.914	-129.99	13.63	107.48	0.035	18.66	0.358	-83.42
1.0 GHz	0.911	-134.43	12.45	104.64	0.036	15.95	0.344	-86.81
1.1 GHz	0.909	-138.17	11.44	102.15	0.036	13.59	0.334	-89.73
1.2 GHz	0.908	-141.36	10.58	99.92	0.037	11.50	0.326	-92.27
1.3 GHz	0.906	-144.11	9.82	97.91	0.037	9.62	0.320	-94.48
1.4 GHz	0.905	-146.49	9.16	96.08	0.037	7.91	0.316	-96.43
1.5 GHz	0.905	-148.59	8.58	94.39	0.037	6.35	0.314	-98.16
1.6 GHz	0.904	-150.43	8.07	92.82	0.037	4.91	0.313	-99.70
1.7 GHz	0.904	-152.08	7.61	91.34	0.037	3.57	0.312	-101.09
1.8 GHz	0.903	-153.55	7.19	89.96	0.037	2.32	0.313	-102.34
1.9 GHz	0.903	-154.87	6.82	88.64	0.037	1.14	0.314	-103.47
2.0 GHz	0.903	-156.06	6.48	87.39	0.037	0.02	0.316	-104.51
2.1 GHz	0.903	-157.14	6.17	86.20	0.037	-1.05	0.319	-105.46
2.2 GHz	0.903	-158.13	5.89	85.05	0.037	-2.07	0.321	-106.35
2.3 GHz	0.903	-159.04	5.63	83.94	0.037	-3.04	0.325	-107.17
2.4 GHz	0.903	-159.87	5.39	82.87	0.037	-3.98	0.328	-107.95
2.5 GHz	0.903	-160.64	5.17	81.83	0.037	-4.89	0.332	-108.67
2.6 GHz	0.903	-161.35	4.97	80.82	0.037	-5.76	0.336	-109.36
2.7 GHz	0.903	-162.00	4.78	79.84	0.037	-6.61	0.341	-110.02
2.8 GHz	0.903	-162.62	4.60	78.89	0.037	-7.44	0.345	-110.64
2.9 GHz	0.903	-163.19	4.43	77.95	0.037	-8.24	0.350	-111.25
3.0 GHz	0.903	-163.72	4.28	77.04	0.037	-9.02	0.355	-111.83
3.2 GHz	0.904	-164.69	3.99	75.27	0.037	-10.53	0.365	-112.93
3.4 GHz	0.904	-165.55	3.74	73.56	0.037	-11.98	0.376	-113.98
3.6 GHz	0.905	-166.31	3.52	71.91	0.036	-13.37	0.387	-114.98
3.8 GHz	0.906	-167.00	3.32	70.31	0.036	-14.71	0.398	-115.94
4.0 GHz	0.906	-167.62	3.13	68.75	0.036	-16.00	0.409	-116.88
4.2 GHz	0.907	-168.18	2.97	67.23	0.036	-17.26	0.420	-117.79
4.4 GHz	0.908	-168.70	2.81	65.75	0.036	-18.48	0.431	-118.68
4.6 GHz	0.909	-169.17	2.67	64.30	0.035	-19.67	0.442	-119.55
4.8 GHz	0.909	-169.61	2.55	62.89	0.035	-20.82	0.453	-120.40
5.0 GHz	0.910	-170.02	2.43	61.50	0.035	-21.95	0.464	-121.25
5.2 GHz	0.911	-170.40	2.32	60.14	0.035	-23.05	0.475	-122.08
5.4 GHz	0.912	-170.75	2.22	58.80	0.034	-24.12	0.486	-122.89
5.6 GHz	0.913	-171.08	2.12	57.49	0.034	-25.17	0.497	-123.70
5.8 GHz	0.914	-171.39	2.03	56.20	0.034	-26.20	0.507	-124.50
6.0 GHz	0.914	-171.69	1.95	54.94	0.033	-27.20	0.517	-125.28

Contact Cree to receive this s-parameter file in ".s2p" format at [Wireless\\_Sales@cree.com](mailto:Wireless_Sales@cree.com)



**Typical Die S-Parameters (Small Signal,  $V_{DS} = 28\text{ V}$ ,  $I_{DQ} = 300\text{ mA}$ , magnitude / angle)**

Frequency	Mag S11	Ang S11	Mag S21	Ang S21	Mag S12	Ang S12	Mag S22	Ang S22
500 MHz	0.937	-108.13	22.00	121.21	0.028	31.85	0.404	-72.20
600 MHz	0.930	-117.71	19.30	115.84	0.029	26.61	0.372	-79.50
700 MHz	0.925	-125.21	17.11	111.51	0.030	22.42	0.348	-85.45
800 MHz	0.921	-131.20	15.31	107.94	0.031	18.98	0.330	-90.35
900 MHz	0.918	-136.06	13.83	104.92	0.031	16.09	0.317	-94.43
1.0 GHz	0.916	-140.08	12.59	102.31	0.032	13.61	0.307	-97.85
1.1 GHz	0.915	-143.44	11.54	100.03	0.032	11.46	0.300	-100.74
1.2 GHz	0.913	-146.29	10.65	97.99	0.032	9.55	0.295	-103.19
1.3 GHz	0.913	-148.74	9.88	96.15	0.032	7.85	0.292	-105.28
1.4 GHz	0.912	-150.86	9.20	94.47	0.033	6.30	0.290	-107.07
1.5 GHz	0.911	-152.71	8.61	92.92	0.033	4.88	0.289	-108.62
1.6 GHz	0.911	-154.34	8.09	91.48	0.033	3.56	0.289	-109.96
1.7 GHz	0.911	-155.79	7.62	90.12	0.033	2.34	0.290	-111.13
1.8 GHz	0.910	-157.09	7.20	88.84	0.033	1.19	0.292	-112.16
1.9 GHz	0.910	-158.25	6.83	87.63	0.033	0.11	0.294	-113.08
2.0 GHz	0.910	-159.30	6.49	86.47	0.033	-0.92	0.297	-113.89
2.1 GHz	0.910	-160.25	6.17	85.36	0.033	-1.90	0.300	-114.62
2.2 GHz	0.910	-161.12	5.89	84.29	0.033	-2.84	0.303	-115.28
2.3 GHz	0.910	-161.92	5.63	83.26	0.033	-3.74	0.307	-115.88
2.4 GHz	0.910	-162.65	5.39	82.26	0.033	-4.61	0.311	-116.43
2.5 GHz	0.910	-163.32	5.17	81.29	0.033	-5.44	0.315	-116.94
2.6 GHz	0.910	-163.95	4.97	80.35	0.033	-6.26	0.320	-117.42
2.7 GHz	0.910	-164.52	4.77	79.43	0.033	-7.05	0.324	-117.87
2.8 GHz	0.911	-165.06	4.60	78.54	0.032	-7.81	0.329	-118.30
2.9 GHz	0.911	-165.56	4.43	77.66	0.032	-8.56	0.334	-118.70
3.0 GHz	0.911	-166.03	4.28	76.80	0.032	-9.29	0.339	-119.09
3.2 GHz	0.911	-166.88	3.99	75.13	0.032	-10.70	0.349	-119.83
3.4 GHz	0.912	-167.63	3.74	73.51	0.032	-12.05	0.360	-120.53
3.6 GHz	0.912	-168.31	3.52	71.94	0.032	-13.36	0.371	-121.21
3.8 GHz	0.913	-168.91	3.32	70.42	0.032	-14.62	0.382	-121.87
4.0 GHz	0.913	-169.46	3.13	68.94	0.032	-15.85	0.393	-122.52
4.2 GHz	0.914	-169.95	2.97	67.49	0.031	-17.03	0.404	-123.16
4.4 GHz	0.914	-170.41	2.82	66.07	0.031	-18.19	0.415	-123.79
4.6 GHz	0.915	-170.83	2.68	64.68	0.031	-19.32	0.426	-124.43
4.8 GHz	0.916	-171.21	2.55	63.32	0.031	-20.42	0.437	-125.06
5.0 GHz	0.916	-171.57	2.43	61.99	0.031	-21.49	0.448	-125.69
5.2 GHz	0.917	-171.91	2.33	60.68	0.030	-22.54	0.458	-126.32
5.4 GHz	0.918	-172.22	2.22	59.39	0.030	-23.57	0.469	-126.95
5.6 GHz	0.919	-172.51	2.13	58.12	0.030	-24.58	0.480	-127.57
5.8 GHz	0.919	-172.79	2.04	56.88	0.030	-25.56	0.490	-128.20
6.0 GHz	0.920	-173.05	1.96	55.66	0.029	-26.53	0.500	-128.82

Contact Cree to receive this s-parameter file in ".s2p" format at [Wireless\\_Sales@cree.com](mailto:Wireless_Sales@cree.com)



## Disclaimer

Specifications are subject to change without notice. Cree, Inc. believes the information contained within this data sheet to be accurate and reliable. However, no responsibility is assumed by Cree for its use or for any infringement of patents or other rights of third parties which may result from its use. No license is granted by implication or otherwise under any patent or patent rights of Cree. Cree makes no warranty, representation or guarantee regarding the suitability of its products for any particular purpose. "Typical" parameters are the average values expected by Cree in large quantities and are provided for information purposes only. These values can and do vary in different applications, and actual performance can vary over time. All operating parameters should be validated by customer's technical experts for each application. Cree products are not designed, intended, or authorized for use as components in applications intended for surgical implant into the body or to support or sustain life, in applications in which the failure of the Cree product could result in personal injury or death, or in applications for the planning, construction, maintenance or direct operation of a nuclear facility. CREE and the CREE logo are registered trademarks of Cree, Inc.

For more information, please contact:

Cree, Inc.  
4600 Silicon Drive  
Durham, North Carolina, USA 27703  
[www.cree.com/wireless](http://www.cree.com/wireless)

Sarah Miller  
Marketing & Export  
Cree, RF Components  
1.919.407.5302

Ryan Baker  
Marketing  
Cree, RF Components  
1.919.407.7816

Tom Dekker  
Sales Director  
Cree, RF Components  
1.919.407.5639





Компания «ЭлектроПласт» предлагает заключение долгосрочных отношений при поставках импортных электронных компонентов на взаимовыгодных условиях!

Наши преимущества:

- Оперативные поставки широкого спектра электронных компонентов отечественного и импортного производства напрямую от производителей и с крупнейших мировых складов;
- Поставка более 17-ти миллионов наименований электронных компонентов;
- Поставка сложных, дефицитных, либо снятых с производства позиций;
- Оперативные сроки поставки под заказ (от 5 рабочих дней);
- Экспресс доставка в любую точку России;
- Техническая поддержка проекта, помощь в подборе аналогов, поставка прототипов;
- Система менеджмента качества сертифицирована по Международному стандарту ISO 9001;
- Лицензия ФСБ на осуществление работ с использованием сведений, составляющих государственную тайну;
- Поставка специализированных компонентов (Xilinx, Altera, Analog Devices, Intersil, Interpoint, Microsemi, Aeroflex, Peregrine, Syfer, Eurofarad, Texas Instrument, Miteq, Cobham, E2V, MA-COM, Hittite, Mini-Circuits, General Dynamics и др.);

Помимо этого, одним из направлений компании «ЭлектроПласт» является направление «Источники питания». Мы предлагаем Вам помощь Конструкторского отдела:

- Подбор оптимального решения, техническое обоснование при выборе компонента;
- Подбор аналогов;
- Консультации по применению компонента;
- Поставка образцов и прототипов;
- Техническая поддержка проекта;
- Защита от снятия компонента с производства.



#### Как с нами связаться

**Телефон:** 8 (812) 309 58 32 (многоканальный)

**Факс:** 8 (812) 320-02-42

**Электронная почта:** [org@eplast1.ru](mailto:org@eplast1.ru)

**Адрес:** 198099, г. Санкт-Петербург, ул. Калинина, дом 2, корпус 4, литера А.